

SIDE 2

**EAL TABLE 4
DOSE PROJECTION MONITORS**

1. CNMT HI RANGE ACCIDENT MONITORS
2. PLANT VENT STACK #1 W/WM EFFLUENT CHANNEL
3. MAIN STEAM LINE MONITORS
4. STACK #5A MONITOR W/WM EFFLUENT CHANNEL
5. STACK #5B MONITOR W/WM EFFLUENT CHANNEL
6. SECONDARY WASTE SAMPLE TANK DISCHARGE MONITOR
7. WASTE MONITOR TANK DISCHARGE MONITOR
8. TURBINE BLDG. DRAIN MONITOR

**EAL TABLE 5
EFFLUENT MONITORS**

1. PLANT VENT STACK #1 W/WM EFFLUENT CHANNEL
2. TURBINE BUILDING STACK #3A W/WM EFFLUENT CHANNEL
3. STACK #5 W/WM EFFLUENT CHANNEL
4. STACK #5A W/WM EFFLUENT CHANNEL
5. TREATED LAUNDRY AND HOT SHOWER DISCHARGE MONITOR
6. SECONDARY WASTE SAMPLE TANK DISCHARGE MONITOR
7. WASTE MONITOR TANK DISCHARGE MONITOR
8. TURBINE BLDG. DRAIN MONITOR

**EAL TABLE 6
SEISMIC EVENT SYMPTOMS**

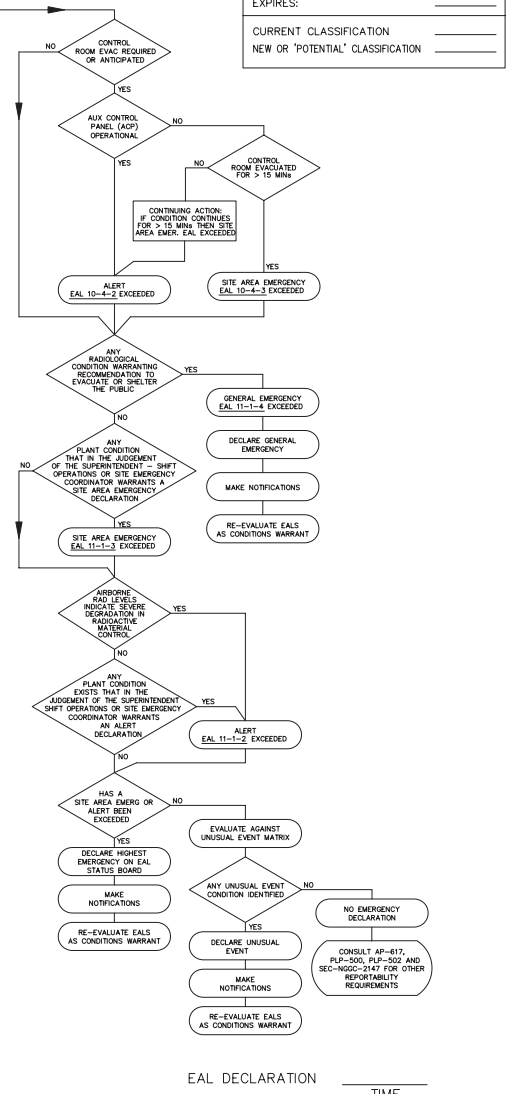
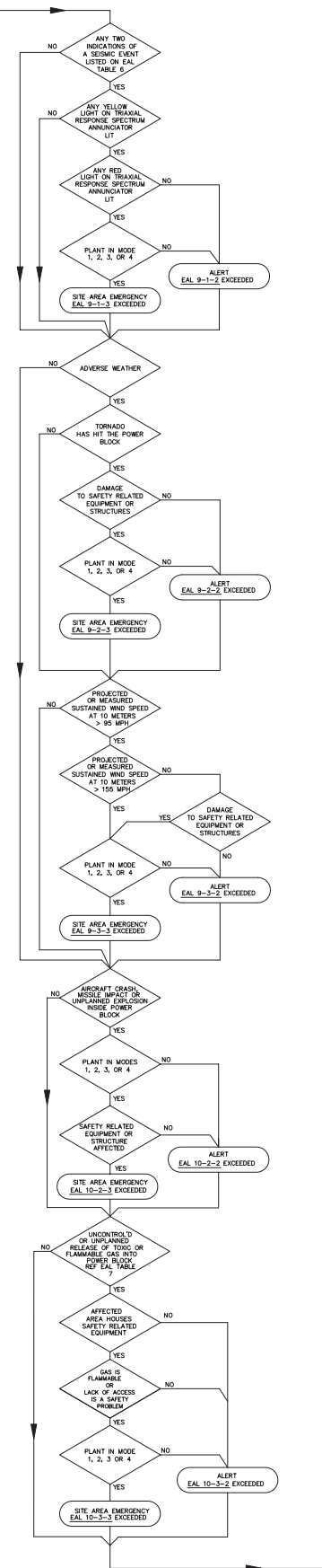
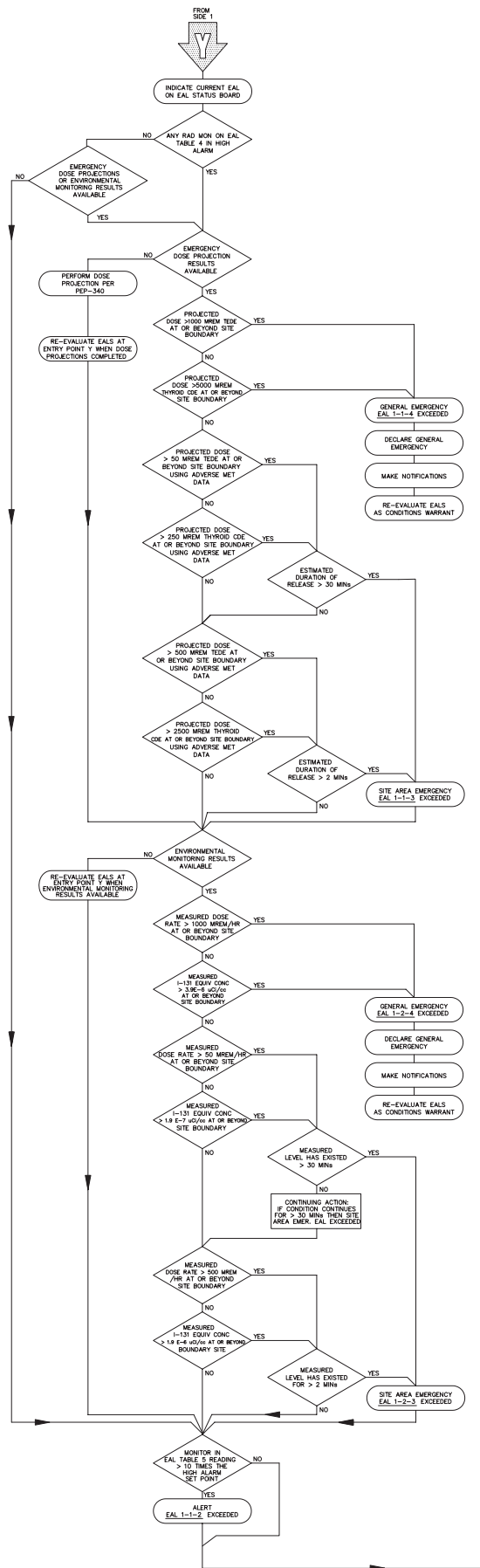
1. "SEISMIC MON SYS OSE EXCEEDED" ALARM (ALS 10-4-4) AND/OR "ALARM" LIGHT ON THE SEISMIC SWITCH PANEL.
2. WHITE EVENT INDICATOR ON SMA CONTROL PANEL.
3. ALARM AT TRIAXIAL RESPONSE SPECTRUM ANNUNCIATOR.
4. NOTICEABLE TREMORS OR VIBRATION.

EAL STATUS BOARD

GENERAL EMERGENCY _____ EAL REF. NO(S): _____
 SITE AREA EMERGENCY _____
 ALERT _____
 UNUSUAL EVENT _____

CONTINUING ACTION: _____ TIME _____
 BEGAN: _____
 REQUIRED DURATION (MIN) _____
 EXPIRES: _____

CURRENT CLASSIFICATION _____
 NEW OR 'POTENTIAL' CLASSIFICATION _____



**EAL TABLE 1
RADIATION MONITOR TAG NUMBERS**

MONITOR DESCRIPTION	INSTRUMENT TAG NO.	RM-11 CHANNEL ID NO.	ERIS POINT ID NO.
CNMT HI RANGE ACCIDENT MONITORS	RM-10R-3589-SA	205303	RLT5302B
PLANT VENT STACK #1 W/WM EFFLUENT CHANNEL	RM-21AV-3509-1SA	1E0817	RAV3509H
TURBINE BUILDING STACK 3A W/WM EFFLUENT CHANNEL	RM-11TV-3536-1	2E0827	RTV3536D
MAIN STEAM LINE MONITORS	RM-1MS-3591-SB RM-1MS-3592-SB RM-1MS-3593-SB	5A1164 5A1165 5A1166	RM3591A RM3592A RM3593A
FUEL BREACH AREA RAD. MONITORS	RM-1RR-3595 RM-1RR-3596A RM-1RR-3596B RM-1RR-3596C RM-1RR-3596D RM-1RR-3601 RM-1RR-3602	1A0056 1A0060 1A0061 1A0062 1A0063 1A0064 1A0065	RR3595A RR3596A RR3596B RR3596C RR3596D RR3601A RR3602A
STACK #5 MONITOR W/WM EFFLUENT CHANNEL	RM-1RW-3546-1	4E0837	RW3546H
STACK #5A MONITOR W/WM EFFLUENT CHANNEL	RM-1RW-3547-1	4E0847	RW3547H
LIQUID EFFLUENT MONITORS TREATED LAUNDRY & HOT SHOWER DISCHARGE	REM-1LW-3540	4L0866	RLW3540A
SECONDARY WASTE SAMPLE TANK DISCHARGE	REM-21WS-3542	4L0866	RW3542A
WASTE MONITOR TANK DISCHARGE	REM-1W-3541	4L0876	RLW3541A
TURBINE BLDG. DRAIN	REM-1UD-3528	2L2276	RD3528A

**EAL TABLE 7
TOXIC, FLAMMABLE, & ASPHYXIANT GASES**

GAS	TOXIC		FLAMMABLE		ASPHYXIANT		CHEMICAL FACT SHEET NUMBER
	X		X		X		
ACETYLENE		X	X		X		AP-501-00610
HYDROGEN (2)		X	X		X		AP-501-00129
CARBON DIOXIDE	X		X		X		AP-501-00085
AMMONIA	X		X		X		AP-501-00637
P-10 (USED IN PORTAL MONITORS)		X	X		X		AP-501-00599
OXYGEN (2)		X	X		X		AP-501-00568
NITROGEN		X	X		X		AP-501-00130
ARGON		X	X		X		AP-501-00319
HELIUM		X	X		X		AP-501-00573
FREON		X	X		X		AP-501-00987

THIS LIST INCLUDES GASES STORED IN BULK AND IS NOT INTENDED TO BE ALL INCLUSIVE.

(1) VENTING OF H2 FROM THE H2 TANK VENT STACK OR H2 HEADER IN ACCORDANCE WITH DESIGN AND IS A FLAMMABLE EVENT.
 (2) OXYGEN ITSELF IS NOT FLAMMABLE, HOWEVER, ITS PRESENCE INCREASES THE FLAMMABILITY OF MATERIALS AND SHOULD BE CONSIDERED A TOXIC.

ASPHYXIANT GASES IN LARGE ENOUGH QUANTITIES CAN DISPLACE OXYGEN AND POSE A DANGER TO PERSONNEL AND SHOULD BE CONSIDERED A TOXIC.

THE TYPE AND QUANTITY OF GAS RELEASED, VOLUME OF AREA, AND VENTILATION SYSTEMS IN SERVICE SHOULD BE EVALUATED TO DETERMINE WHETHER PERSONNEL OR EQUIPMENT COULD BE IN AN ADVERSE ENVIRONMENT, OR WHETHER ACCESS TO EQUIPMENT REQUIRED TO OPERATE THE PLANT IS IMPEDED.

UNUSUAL EVENT MATRIX

1) GASEOUS OR LIQUID EFFLUENTS EXCEEDING TECHNICAL SPECIFICATIONS	2) FUEL DAMAGE INDICATION	3) LOSS OF SECONDARY COOLANT OR COOLING	4) LOSS OF REACTOR COOLANT	5) LOSS OF POWER	6) LOSS OF MOB ANNUNCIATORS OR COMMUNICATIONS CAPABILITY	7) SECURITY THREAT	8) OTHER PLANT OR EQUIPMENT PROBLEMS	9) NATURAL PHENOMENA	10) OTHER HAZARDS	11) SITE EMERGENCY COORDINATOR JUDGMENT
EAL 1-1-1 VALID HIGH ALARM ON ANY OF THE MONITORS IN EAL TABLE 5 AND THE RELEASE HAS NOT BEEN TERMINATED (UNUSUAL EVENT EXISTS UNTIL EFFLUENT DISCHARGE IS TERMINATED AND WHEN ALL REQUIRED NOTIFICATIONS ARE MADE)	EAL 2-1-1 GROSS FAILED FUEL DETECTOR INDICATES AN INCREASE > 25.4 CPM WITHIN 20 MINUTES EAL 2-2-1 RCS SPECIFIC ACTIVITY EXCEEDS TECHNICAL SPECIFICATION 3.4E-11MPC/CM WITHIN 20 MINUTES FOR DOSE EQUIVALENT > 131 THE EAL IS NOT EXCEEDED UNLESS THE 48 HOUR TIME INTERVAL LIMIT IS EXCEEDED.	EAL 3-1-1 FAILURE OF A SO SAFETY OR PORV TO FULLY RESET AFTER OPERATION EAL 3-2-1 FAILURE OF A SO SAFETY OR PORV TO FULLY RESET AFTER OPERATION (A BREAK IS A LEAK TO SHUTDOWN THE PLANT & A MANNER OR TO NOT EXCEED TECH SPEC COOLDOWN LIMITS) EAL 3-3-1 ANY OTHER RCS LEAKAGE IN EXCESS OF TECHNICAL SPECIFICATION 3.4E-8 WITH THE 4 HOUR CORRECTIVE ACTIONS NOT SATISFIED	EAL 4-1-1 FAILURE OF A PRESSURIZER SAFETY OR PORV TO CLOSE FOLLOWING REDUCTION OF APPLICABLE PRESSURE EAL 4-2-1 ANY RCS PRESSURE BOUNDARY LEAKAGE EAL 4-3-1 ANY OTHER RCS LEAKAGE IN EXCESS OF TECHNICAL SPECIFICATION 3.4E-8 WITH THE 4 HOUR CORRECTIVE ACTIONS NOT SATISFIED	EAL 5-1-1 LOSS OF ALL OFFSITE POWER EAL 5-2-1 LOSS OF BOTH EMERGENCY DIESEL GENERATORS EAL 5-3-1 FAILURE OF BOTH SITE TELEPHONE AND EMERGENCY (HEAEC) TELEPHONE SWITCHES	EAL 6-1-1 UNPLANNED LOSS OF >70% OF MOB ANNUNCIATORS (ALBS) FOR 15 MINUTES AS DEFINED BY: + MODES 1-4 TOTAL # ALBS = 30 + MODES 5-6 TOTAL # ALBS = 20 + (ALS 13, 4-15, 22, 23, OTHER OPERABILITY, 20-26, & 30)	EAL 7-1-1 CONFIRMED SECURITY EVENT WHICH INDICATES A POTENTIAL SEPARATION IN THE LEVEL OF SAFETY OF THE PLANT AS INDICATED BY ANY OF THE FOLLOWING: UNAUTHORIZED ALTERATION OR TAMPERING HAS OR IS OCCURRING AFFECTING PLANT EQUIPMENT UNAUTHORIZED ENTRY INTO THE PROTECTED AREA HOSTAGE/RAVISON SITUATION THAT THREATENS TO INTERRUPT NORMAL PLANT OPERATIONS A CREDIBLE THREAT AGAINST THE HARRIS PLANT A VALIDATED NOTIFICATION FROM HIC PROVING INFORMATION OF AN AIRCRAFT THREAT	EAL 8-1-1 INABILITY TO REACH REQUIRED SHUTDOWN (MODE 3) CONDITION WITHIN TECH. SPEC. TIME LIMITS EAL 8-2-1 TURBINE STARTUP/SHUTDOWN/EXTENSION AND UNPLANNED SUSTAINED POSITIVE STARTUP RATE THIS DOES NOT INCLUDE EARLIER ONTICULTY EXTENSION DURING PLANNED REACTOR STARTUPS EAL 8-3-1 TURBINE STARTUP/SHUTDOWN/EXTENSION AND UNPLANNED SUSTAINED POSITIVE STARTUP RATE THIS DOES NOT INCLUDE EARLIER ONTICULTY EXTENSION DURING PLANNED REACTOR STARTUPS	EAL 9-1-1 INDICATION OF ANY TWO VALID SEISMIC SYMPTOMS LISTED ON EAL TABLE 6 EAL 9-2-1 TORNADO REPORTED WITHIN THE EAB EAL 9-3-1 SUSTAINED WIND SPEED AT 10 METERS OF 74 MPH OR GREATER	EAL 10-1-1 FIRE WITHIN THE PROTECTED AREA NOT EXTINGUISHED WITHIN 10 MINUTES OF CONTROL ROOM NOTIFICATION OR IDENTIFICATION OF A CONTROL ROOM ALARM EAL 10-2-1 TORNADO REPORTED WITHIN THE EAB EAL 10-3-1 SUSTAINED WIND SPEED AT 10 METERS OF 74 MPH OR GREATER EAL 10-4-1 UNPLANNED EXPLOSION WITHIN THE PROTECTED AREA RESULTING IN VISIBLE DAMAGE TO PERMANENT STRUCTURES OR EQUIPMENT EAL 10-5-1 UNPLANNED TOXIC OR FLAMMABLE GAS RELEASE WITHIN THE EAB (REFERENCE EAL TABLE 7) EAL 10-6-1 CIVIL DISTURBANCE ONGOING BETWEEN THE SITE BOUNDARY AND THE PROTECTED AREA	EAL 11-1-1 OTHER PLANT CONDITIONS EXIST THAT WARRANT INCREASED AWARENESS OF THE PLANT OPERATOR STAFF, CHIEFMAN ROOM HARRIS COUNTY, LEE COUNTY, HART COUNTY, OR THE STATE OF NORTH CAROLINA EAL 11-2-1 SITE BOUNDARY (SB) IS APPROXIMATELY A CIRCLE OF 2000 FT. RADIUS (0.47 MILES) EAL 11-3-1 SECURITY FENCE INCLUDING THE INTAKE STRUCTURES. EAL 11-4-1 SITE BOUNDARY (SB) IS APPROXIMATELY A CIRCLE OF 7000 FT. RADIUS (1.3 MILES)

DEFINITIONS OF AREAS REFERRED TO IN THESE EAL'S:

POWER BLOCK INCLUDES THE CONTAINMENT, REACTOR AUXILIARY BLDG., TURBINE BLDG., FUEL HANDLING BLDG. (INCLUDING THE "A" AREA), WASTE PROCESSING BLDG., DIESEL GENERATOR BLDG., DIESEL FUEL OIL STORAGE, FIRE HOUSE, TANK AREA, INTAKE STRUCTURES, AND DUCT BANKS SERVING THESE AREAS.

PROTECTED AREA INCLUDES THE PLANT AREA INSIDE THE SECURITY FENCE INCLUDING THE INTAKE STRUCTURES.

SITE BOUNDARY (SB) IS APPROXIMATELY A CIRCLE OF 2000 FT. RADIUS (0.47 MILES).

EAL REFERENCE NUMBERS (X-Y-Z):

X = CATEGORY (1-11)
 Y = IDENTIFIER WITHIN CATEGORY
 Z = CLASSIFICATION (1-4)
 1 = UNUSUAL EVENT
 2 = ALERT
 3 = SITE AREA EMERGENCY
 4 = GENERAL EMERGENCY