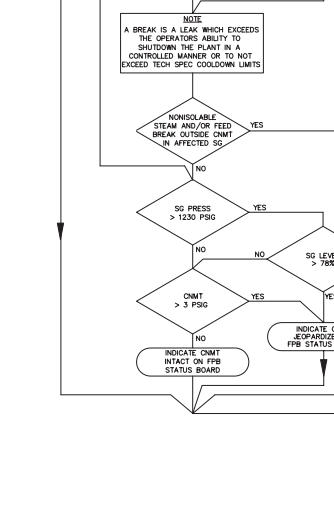
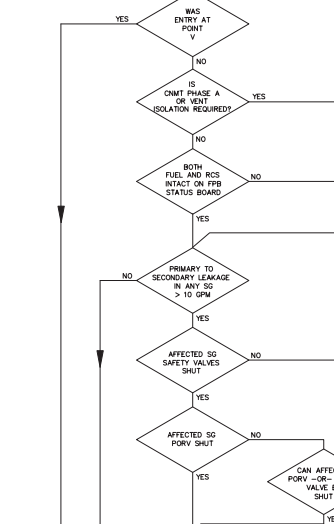
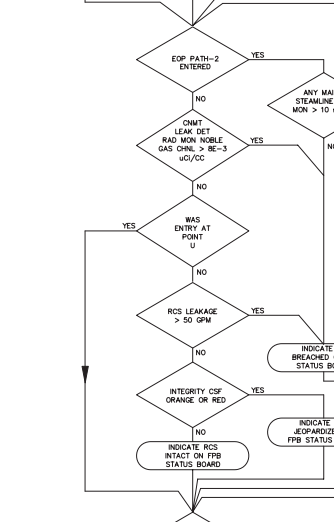
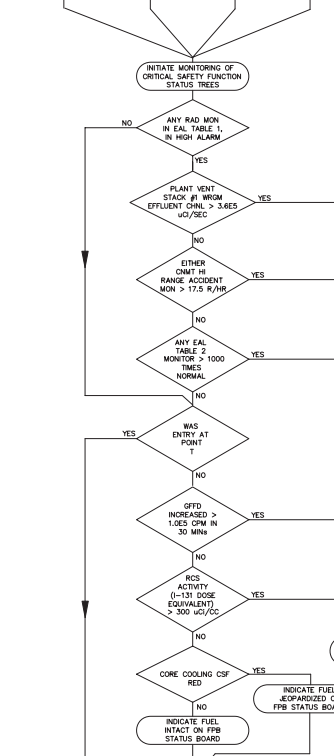
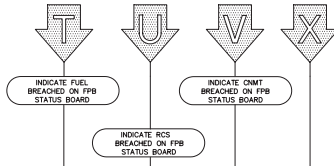


SIDE 1



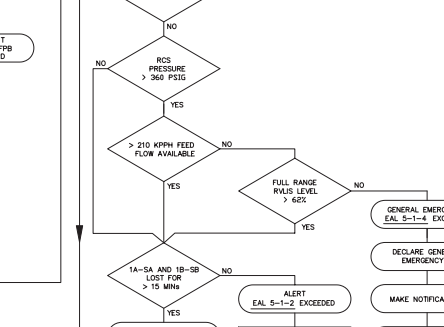
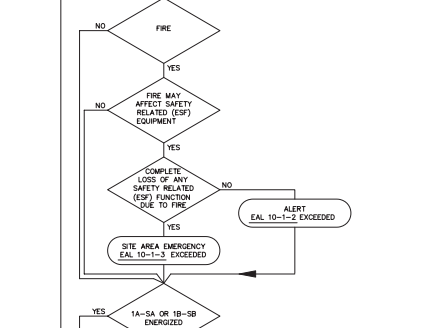
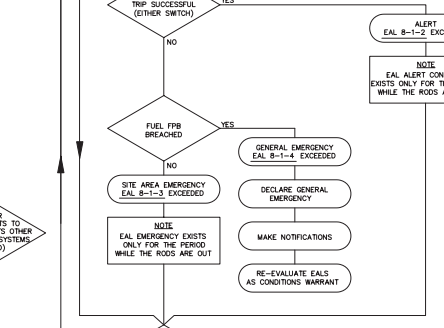
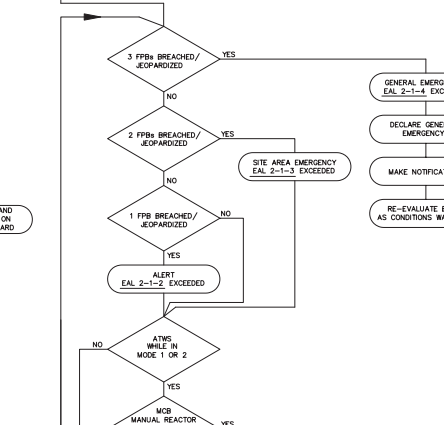
FPB STATUS BOARD		
FUEL FPB	RCS FPB	CONTAINMENT FPB
INTACT _____	INTACT _____	INTACT _____
JEOPARDIZED _____	JEOPARDIZED _____	JEOPARDIZED _____
BREACHED _____	BREACHED _____	BREACHED _____

EAL TABLE 1 RADIATION MONITOR TAG NUMBERS				
MONITOR DESCRIPTION	INSTRUMENT TAG NO.	RM-11 CHANNEL ID NO.	ERIS POINT ID NO.	ERIS POINT NO.
CNMT LEAK DETECTION MONITOR	RM-1T-3502A-SA	20303	RLT3502B	
CNMT HI RANGE ACCIDENT MONITORS	RM-1CR-3589-SA RM-1CR-3590-SB	2AX162 2AX163	RKR3589A RKR3590A	
PLANT VENT STACK #1 WROM EFFLUENT CHANNEL	RM-21AV-3509-15A	1EX817	RAV3509H	
TURBINE BUILDING STACK #3A WROM EFFLUENT CHANNEL	RM-1TV-3536-1	2EX827	RTV3536D	
MAIN STEAM LINE MONITORS	RM-1MS-3591-SB RM-1MS-3592-SB RM-1MS-3593-SB	5AX164 5AX165 5AX166	RMS3591A RMS3592A RMS3593A	
FUEL BREACH AREA RAD MONITORS:				
VOLUME CONTROL TANK RM	RM-1RR-3595	1A0056	RRR3595A	
CHARGING PUMP 1A ROOM	RM-1RR-3596A	1A0060	RRR3596A	
CHARGING PUMP 1B ROOM	RM-1RR-3596B	1A0061	RRR3596B	
CHARGING PUMP 1C ROOM	RM-1RR-3596C	1A0062	RRR3596C	
RECYCLE EVAP. V.V. GAL.	RM-1RR-3600	1A0063	RRR3600A	
LETDOWN HV VALVE GAL.	RM-1RR-3601	1A0064	RRR3601A	
MODERATING HV V.V. GAL.	RM-1RR-3602	1A0065	RRR3602A	
STACK #0 MONITOR WROM EFFLUENT CHANNEL	RM-1RW-3546-1	4EX837	RWV3546H	
STACK #0A MONITOR WROM EFFLUENT CHANNEL	RM-1RW-3547-1	4EX847	RWV3547H	
LIQUID EFFLUENT MONITORS TREATED LAUNDRY & NOT SHOWER DISCHARGE	REM-1WL-3540	4L666	RWL3540A	
SECONDARY WASTE SAMPLE TANK DISCHARGE	REM-21WS-3542	4L686	RWS3542A	
WASTE MONITOR TANK DISCHARGE	REM-1WL-3541	4L676	RWL3541A	
TURBINE BLDG. DRAIN	REM-1MD-3528	2L1276	RMD3528A	

EAL TABLE 2 FUEL BREACH AREA RAD MONITORS
1. VOLUME CONTROL TANK RM
2. CHARGING PUMP 1A ROOM
3. CHARGING PUMP 1B ROOM
4. CHARGING PUMP 1C ROOM
5. RECYCLE EVAP. V.V. GAL.
6. LETDOWN HV VALVE GAL.
7. MODERATING HV V.V. GAL.

EAL TABLE 3 FUNCTIONS NEEDED TO ACHIEVE SHUTDOWN		
	MODE 4-5	MODE 3
CAPABILITY FOR FW FLOW ≥ 210 KPPH	X	X
SECONDARY HEAT SINK CAPABILITY	X	X
RRR CAPABILITY	X	X
CSW CAPABILITY	X	X
ESW CAPABILITY	X	X
CHARGING CAPABILITY	X	X
STEAM GENERATOR SAFETY VALVES	X	X
ISOLATION CAPABILITY	X	X
RCS PRESS. CONTROL CAPABILITY	X	X
ACCUM. ISOL. OR VENTING CAPABILITY	X	X

X = REQUIRED



EAL STATUS BOARD	
EAL REF. NO(S):	
GENERAL EMERGENCY	_____
SITE AREA EMERGENCY	_____
ALERT	_____
UNUSUAL EVENT	_____

