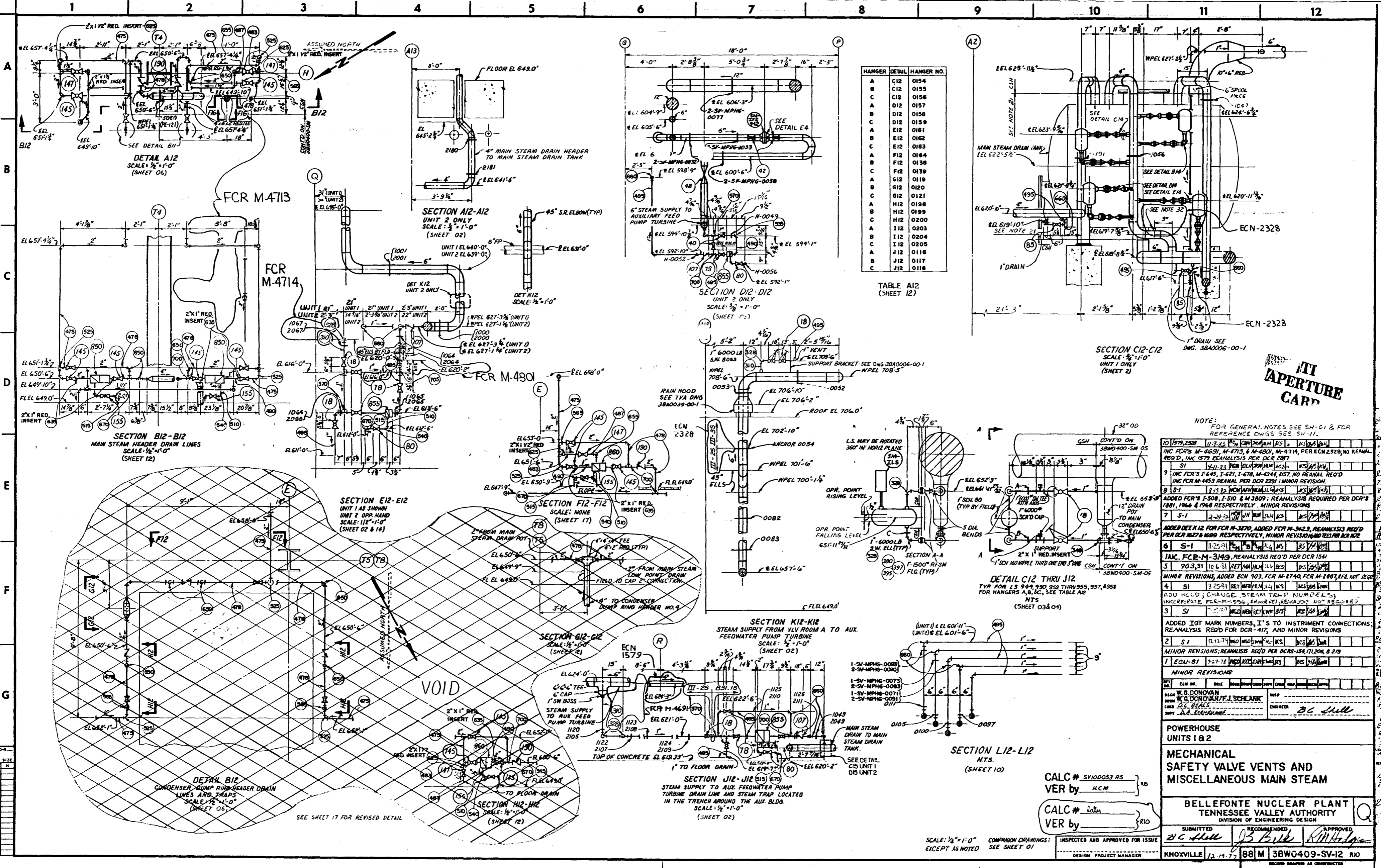


9512-RP
13124-RIO
16832-RIO
20322-RP



HANGER	DETAIL	HANGER NO.
A	C12	0154
B	C12	0155
C	C12	0156
A	D12	0157
B	D12	0158
C	D12	0159
A	E12	0161
B	E12	0162
C	E12	0163
A	F12	0164
B	F12	0138
C	F12	0139
A	G12	0119
B	G12	0120
C	G12	0121
A	H12	0198
B	H12	0199
C	H12	0200
A	I12	0203
B	I12	0204
C	I12	0205
A	J12	0116
B	J12	0117
C	J12	0118

TABLE A12
(SHEET 12)

IT
APERTURE
CARD

NOTE:
FOR GENERAL NOTES SEE SH-01 & FOR
REFERENCE DWGS SEE SH-11.

NO.	DATE	BY	CHKD	DESCRIPTION
10	1/19/79	2328		INC FCR'S M-4691, M-4713, & M-4801, M-4714, PER ECN 2328; NO REANAL. REQ'D. INC 1979 REANALYSIS PER DCR 2807
9	1/11/79	2328		INC FCR'S F-645, F-621, F-678, M-4344, 157. NO REANAL REQ'D. INC FCR M-4453 REANAL PER DCR 2391; MINOR REVISION.
8	5-1	2328		ADDED FCR'S F-508, F-510 & M-3809; REANALYSIS REQUIRED PER DCR'S 1881, 1966 & 1968 RESPECTIVELY. MINOR REVISIONS
7	5-1	2328		ADDED DET K12 FOR FCR M-3870; ADDED FCR M-3423; REANALYSIS REQ'D PER DCR 1827 & 1899 RESPECTIVELY. MINOR REVISIONS PER DCR 1872
6	5-1	11/25/78		INC. FCR-M-3149; REANALYSIS REQ'D PER DCR 1544
5	9/3/78	10/6/78		MINOR REVISIONS; ADDED ECN 903, FCR M-2740, FCR M-2863, REANAL. PER DCR 1544
4	5-1	3/25/78		ADD HOLD; CHANGE STEAM TRAP NUMBERS; INCORPORATE FCR-M-1950; CHANGE REANALYSIS NOT REQUIRED
3	5-1	1/12/78		ADDED IOT MARK NUMBERS, I'S TO INSTRUMENT CONNECTIONS; REANALYSIS REQ'D FOR DCR-417, AND MINOR REVISIONS
2	5-1	1/12/78		MINOR REVISIONS; REANALYSIS REQ'D PER DCR'S 1544, 17206, & 219
1	ECN-51	7/27/78		MINOR REVISIONS

POWERHOUSE
UNITS 1 & 2
MECHANICAL
SAFETY VALVE VENTS AND
MISCELLANEOUS MAIN STEAM

BELLEFONTE NUCLEAR PLANT
TENNESSEE VALLEY AUTHORITY
DIVISION OF ENGINEERING DESIGN

SUBMITTED: *BC Hill* RECOMMENDED: *JS Bink* APPROVED: *RM Hodge*

INSPECTED AND APPROVED FOR ISSUE: *BC Hill*

KNOXVILLE 12/14/77 88 M 3BWO409-SV-12 RIO
SECOND DRAWING AS CONSTRUCTED

CALC # SV10053 AS
VER by H.C.M.

CALC # *later*
VER by *RIO*

SCALE: 1/4" = 1'-0"
EXCEPT AS NOTED

COMPANION DRAWINGS:
SEE SHEET 01

INSPECTED AND APPROVED FOR ISSUE
DESIGN PROJECT MANAGER

8508060328