

1 2 3 4 5 6 7 8 9 10 11 12

A  
B  
C  
D  
E  
F  
G

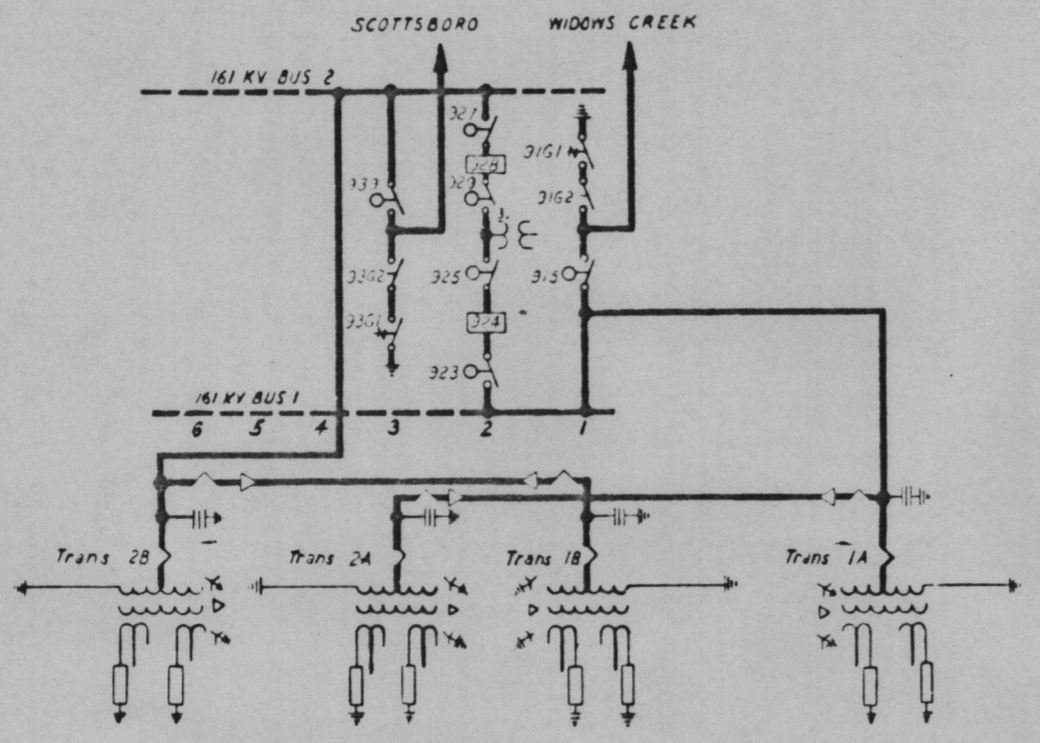
**161KV EQUIPMENT RATINGS**

All switches 1600 amps  
All pcbs 2100 amps  
50x amps interrupting

Grid switches 40,000 amps  
momentary

**LA 144 kv**

Deservt SS Transformer  
161-144 kv, 36  
36,436.6 mm<sup>2</sup> bare winding  
14,121,000 kVA rating  
24/24(1-17-84)



**500KV EQUIPMENT RATINGS**

All switches 3000 amps  
All breakers 3000 amps  
40x amps interrupting

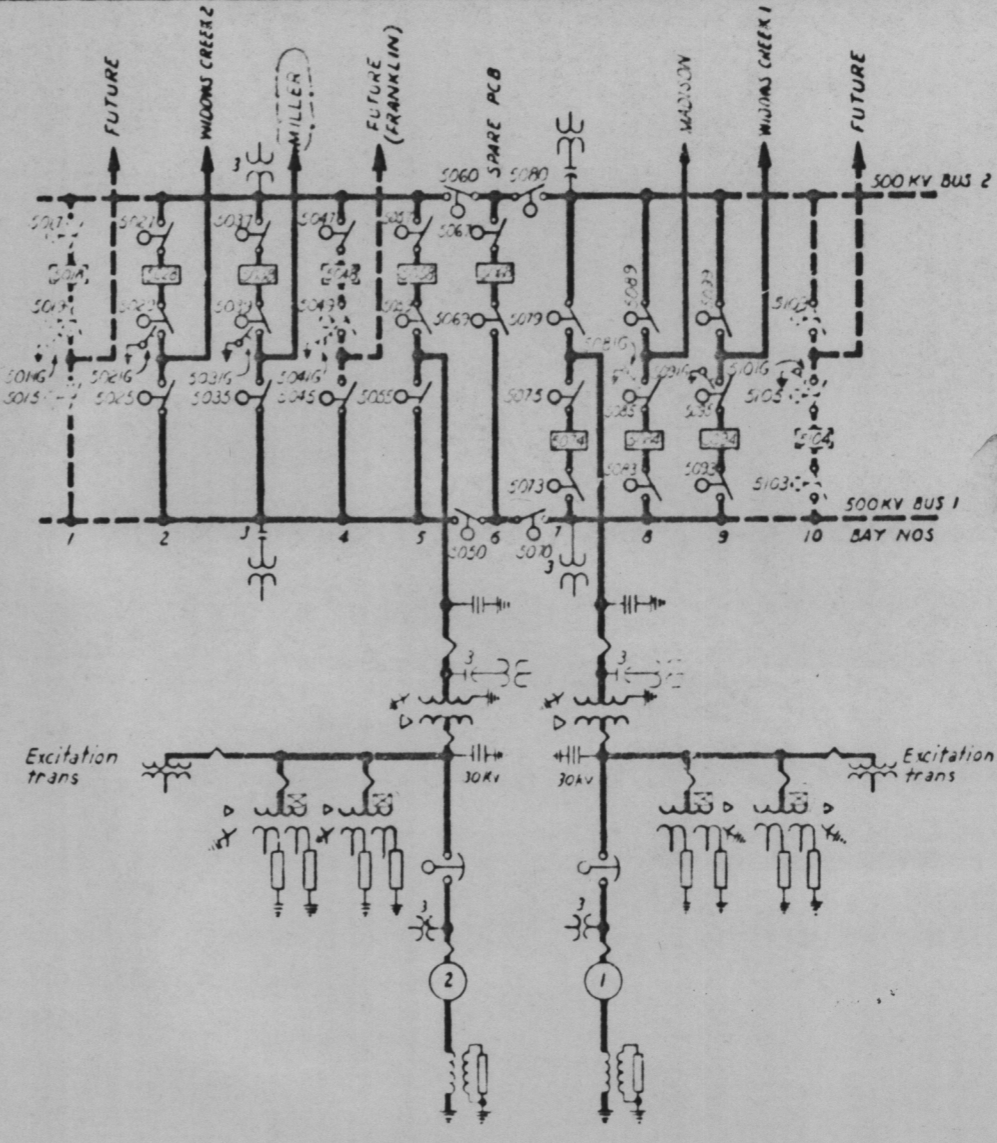
**LA 120 kv**

Main trans 31A, 22.5-500 kv  
455 nva FDA SS 10 line  
(1 spare to serve both banks)

Excitation trans 1, 3A  
10,000 kVA, 344V, 120V  
Unit SS trans 2A (LTC E1076) H35-72 kv  
45750/15-22.5/30/32.5 3440/10 kv  
DA/FA/BUT FOA

Load break switches  
31,000 amps

Generator  
1732 MW  
0.9 pf, 24 kv



**REFERENCE DRAWINGS:**

DRAWING NO.	TITLE
2BW050243 01	Main single line 161kv switchyard
2BW05041E 01	Main single line sh1 500kv switchyard
2BW05041E 02	Main single line sh2 Gen 2 and 500kv switchyard
2BW05041E 03	Main single line sh3 Gen 1 and 500kv switchyard

PRC  
APERTURE  
CARD

REVISIONS

NO.	DATE	DESCRIPTION
1		

DESIGN	J. J. Woodruff	DATE	11-15-72
DRAWN	J. J. Woodruff	CHECKED	J. J. Woodruff
ENGR	J. J. Woodruff	DESIGNED	J. J. Woodruff
SUPV	J. J. Woodruff		

POWERHOUSE

WIRING DIAGRAMS  
DEVELOPMENT SINGLE LINE

BELLEFONTE NUCLEAR PLANT  
TENNESSEE VALLEY AUTHORITY  
DIVISION OF ENGINEERING DESIGN

SUBMITTED	RECOMMENDED	APPROVED
<i>J. J. Woodruff</i>	<i>J. J. Woodruff</i>	<i>J. J. Woodruff</i>
KNOXVILLE	11-15-72 88	2BW0500-00-01

Docket # 50-438  
8304058536  
Control #  
Dr'g # 25-83  
REGULATORY DOCKET FILE

PRINTS REQUIRED

NO.	DESCRIPTION
1	1/1
2	2/1
3	3/1
4	4/1
5	5/1
6	6/1
7	7/1
8	8/1
9	9/1
10	10/1
11	11/1
12	12/1