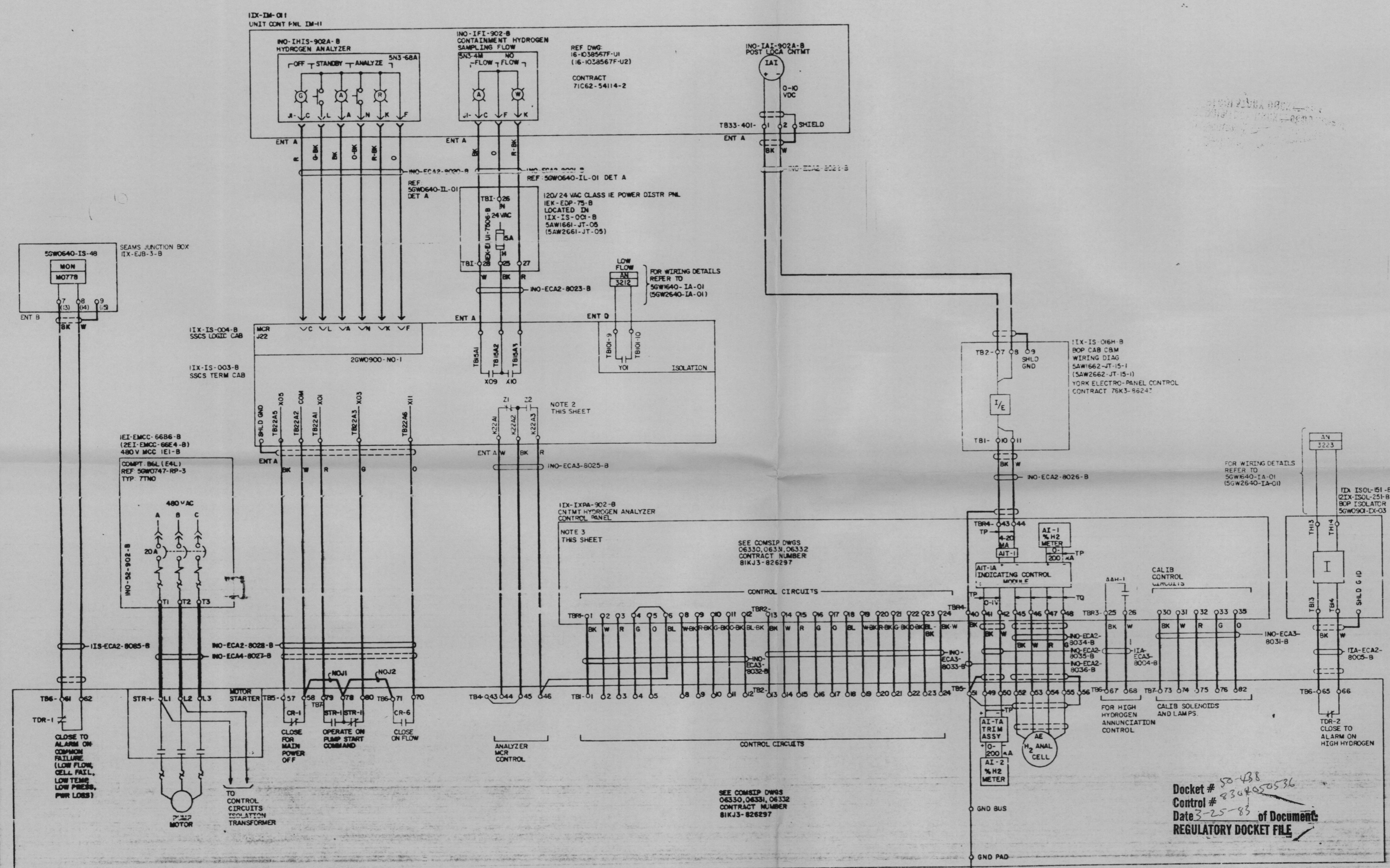


NOTES:
 1. FOR GENERAL NOTES AND REFERENCE DRAWINGS SEE 50W0640-NO-01
 2. SSCS CONTACTS 21 AND 22 ARE DESIGNATED MCR-1 AND MCR-2 RESPECTIVELY ON COMSP DRAWING 06330.
 3. ADMINISTRATIVE CONTROL OF SELECTED CONTROL ACTIONS SHALL BE MAINTAINED AS DOCUMENTED ON 30W0000-10-1.

1 2 3 4 5 6 7 8 9 10 11 12



PRC
 APERTURE
 CARD

Docket # 50-488
 Control # 8304050536
 Date 3-25-85 of Document
 REGULATORY DOCKET FILE

2	1510	11-22-80	ADD	ADD SEAMS JB PER ECN 1510.
1	851	5-15-82	REV	INCORPORATED ECN 851, MINOR CHANGES PER SL

SCALE: NTS
 GENERAL UNITS 1&2
 SCHEMATIC DIAGRAM
 CONTAINMENT COMBUSTIBLE GAS CONTROL SYSTEM

BELLEFONTE NUCLEAR PLANT
 TENNESSEE VALLEY AUTHORITY
 DIVISION OF ENGINEERING DESIGN
 SUBMITTED: 11/22/80
 APPROVED: [Signature]
 KNOXVILLE 7-23-81 88 E 50W0640-NO-07 R2

FURTHER REVIEWED	DATE
CEB	
CEB	
CEB	
INSPECTED AND APPROVED FOR ISSUE	

CONTAINMENT HYDROGEN ANALYZER
 IX-IXPR-902-B

RO OF THIS DRAWING ISSUED FOR ECN 851

SEE COMSP DWGS
 06330, 06331, 06332
 CONTRACT NUMBER
 81KJ3-826297

NOTE 2
 THIS SHEET

NOTE 3
 THIS SHEET

120/24 VAC CLASS IE POWER DISTR PNL
 IEK-EDP-75-B
 LOCATED IN
 IX-IX-003-B
 SAWI661-JT-05
 (SAW2661-JT-05)

FOR WIRING DETAILS
 REFER TO
 50W0640-IA-01
 (50W2640-IA-01)

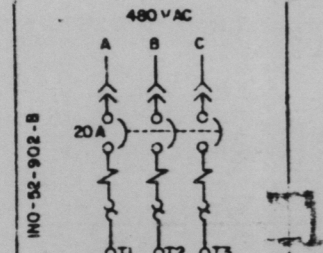
FOR WIRING DETAILS
 REFER TO
 50W0640-IA-01
 (50W2640-IA-01)

50W0640-IS-48
 MON
 MO778
 ENT B

IX-IX-004-B
 SSCS LOGIC CAB
 J22

IX-IX-003-B
 SSCS TERM CAB

IEI-EMCC-6686-B
 (2E1, EMCC-6624-B)
 480V MCC IEI-B
 COMPT. B&L (EAL)
 REF 50W0747-RP-3
 TYP 7TMO



TDR-1
 CLOSE TO ALARM ON COMMON FAILURE (LOW FLOW, CELL FAIL, LOW TEMP, LOW PRESS, PWR LOSS)

CR-1
 CLOSE FOR MAIN POWER OFF

STR-1
 OPERATE ON PUMP START COMMAND

CR-6
 CLOSE ON FLOW

IX-IXPR-902-B
 CNTMT HYDROGEN ANALYZER ANALYZER PANEL

Modak

THIS SCHEMATIC IS UNDER CONFIGURATION CONTROL