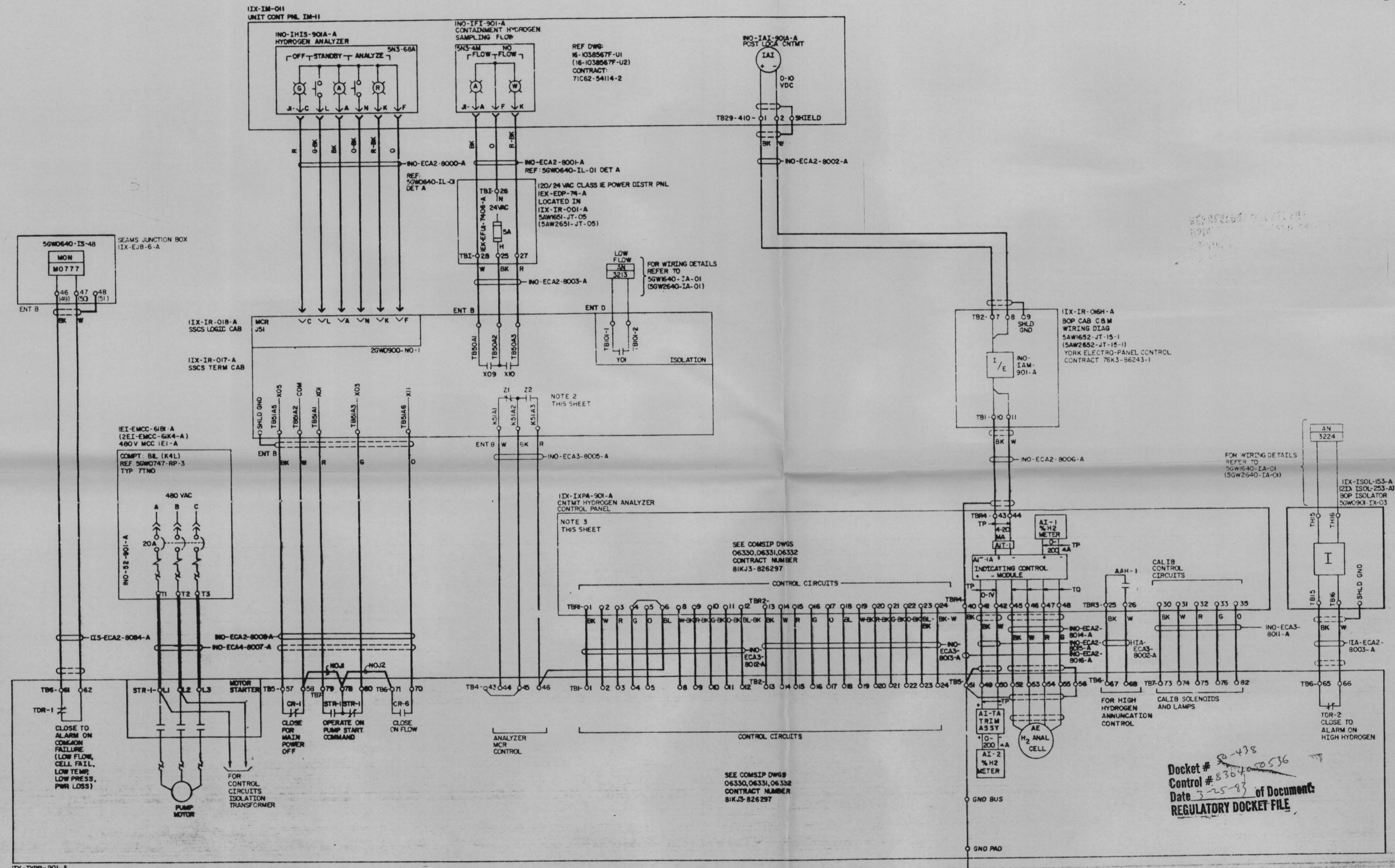


- NOTES:
- FOR GENERAL NOTES AND REFERENCE DRAWINGS SEE SGW0640-NO-01
 - SSCS CONTACTS 21 AND 22 ARE DESIGNATED MCR-1 AND MCR-2 RESPECTIVELY ON COMSIP DRAWING 06332.
 - ADMINISTRATIVE CONTROL OF SELECTED CONTROL ACTIONS SHALL BE MAINTAINED AS DOCUMENTED ON 26W0900-NO-1



CONTAINMENT HYDROGEN ANALYZER
IX-IXPR-901-A

PRC
APERTURE
CARD

Docket # *8364000536*
Control # *8364000536*
Date *3-25-83* of Document
REGULATORY DOCKET FILE

2	150	11-2-83	ADD SEAMS JB PER ECH 1510.
1	851, SI	5-14-82	INCORPORATED ECH 851, MINOR CHANGES PER SI.

SCALE: NTS
GENERAL
UNITS 1&2

SCHEMATIC DIAGRAM
CONTAINMENT COMBUSTIBLE
GAS CONTROL SYSTEM

BELLEFONTAINE NUCLEAR PLANT
TENNESSEE VALLEY AUTHORITY
DIVISION OF ENGINEERING DESIGN

SUBMITTED: *[Signature]* RECOMMENDED: *[Signature]* APPROVED: *[Signature]*
KNOXVILLE 7-23-81 88 E SGW0640-NO-06

IX-IXPR-901-A
CONTMT HYDROGEN ANALYZER
ANALYZER PANEL

FOR WIRING DETAILS REFER TO SGW1640-IA-01 (SGW2640-IA-01)

NO.	DATE	REVISION

INSPECTED AND APPROVED FOR ISSUE

THIS SCHEMATIC IS UNDER CONFIGURATION CONTROL