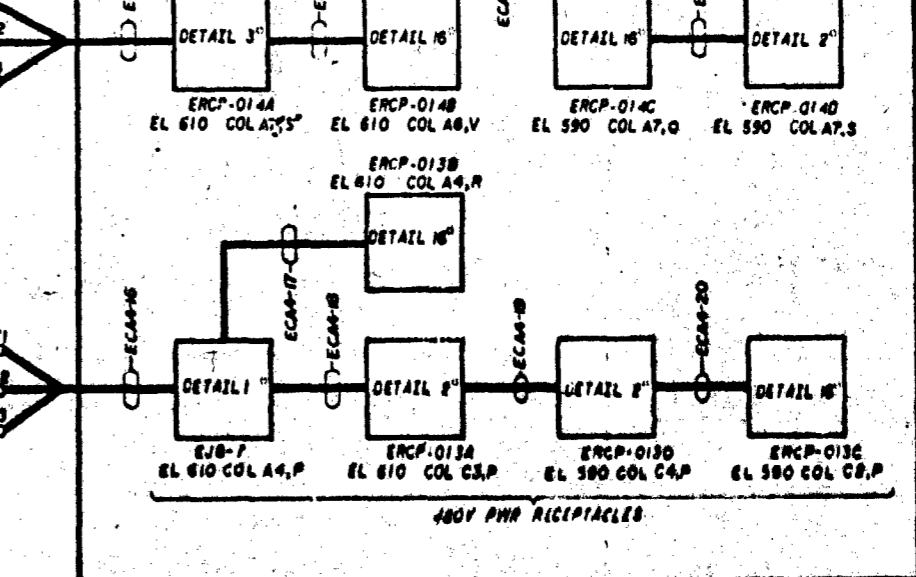
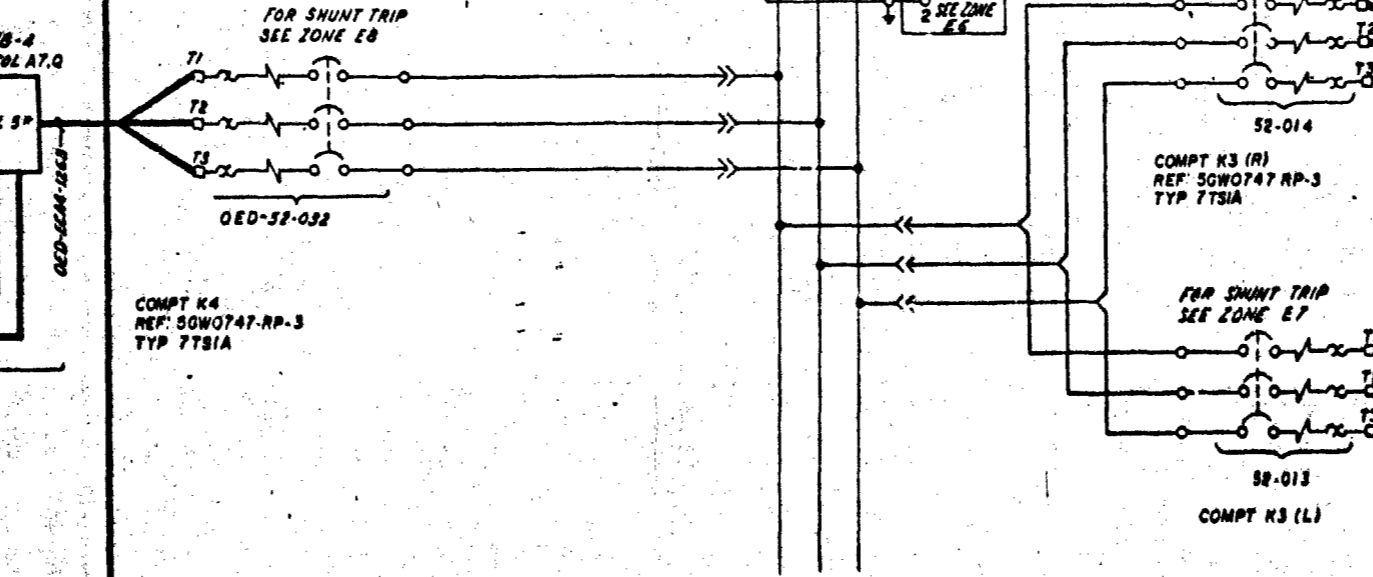
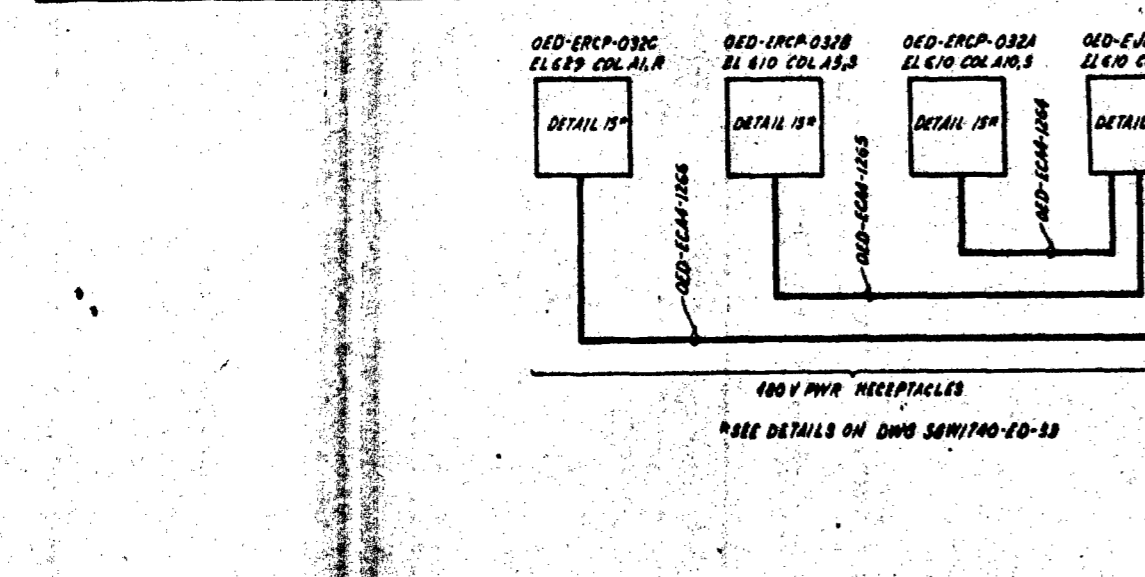
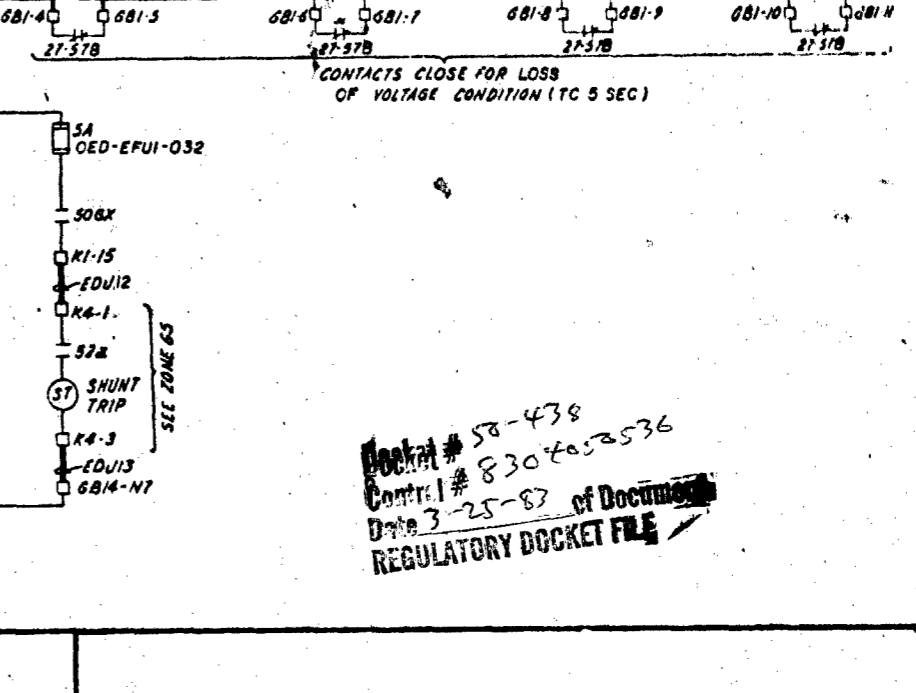
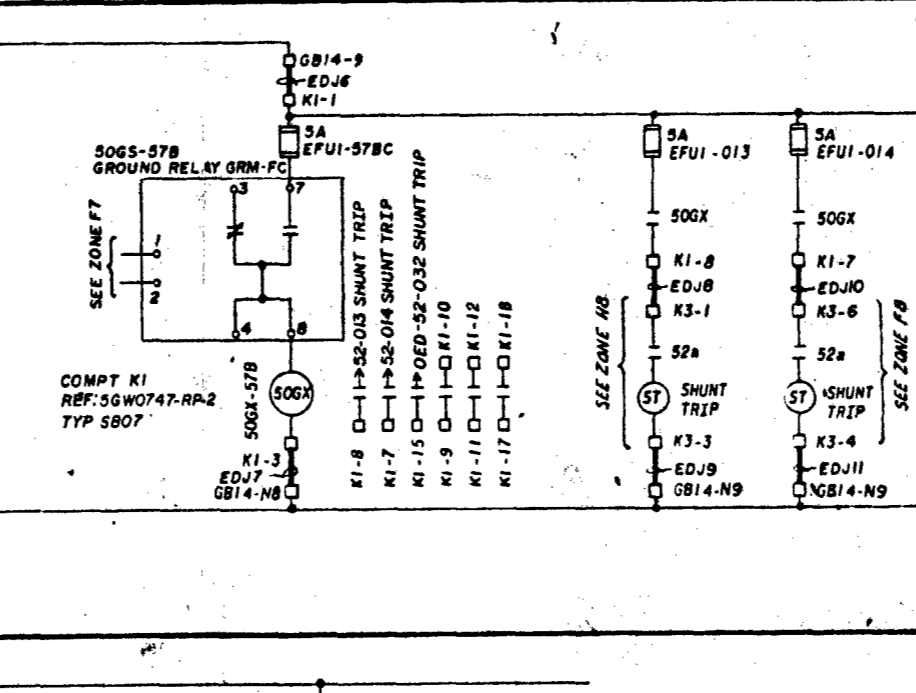
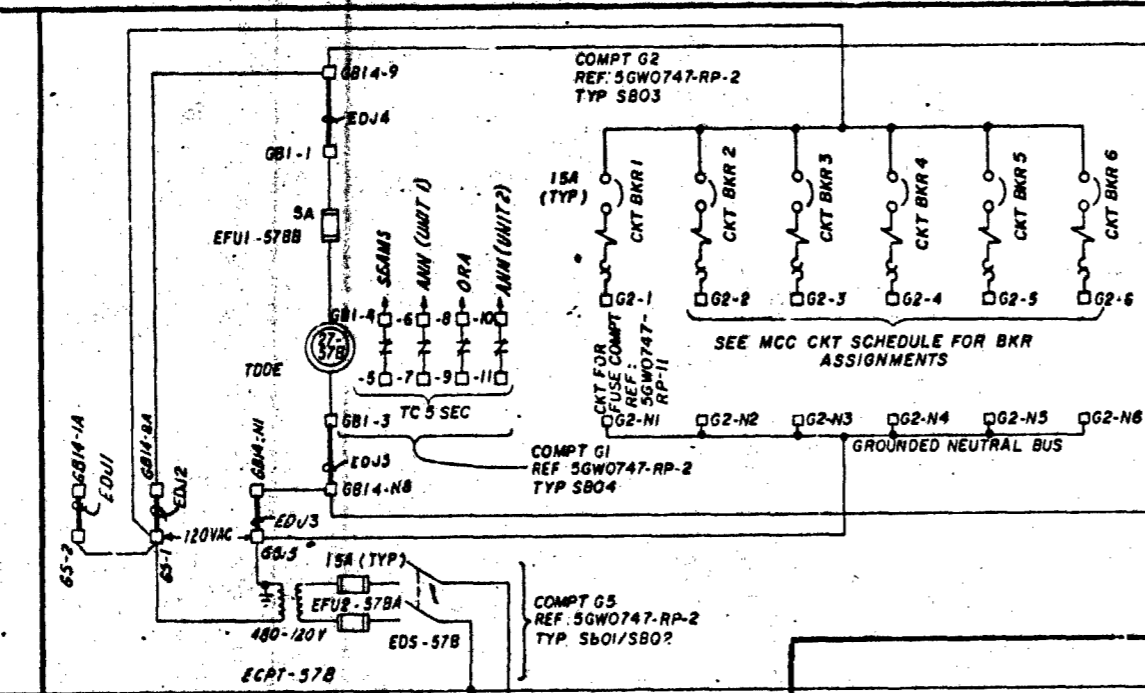
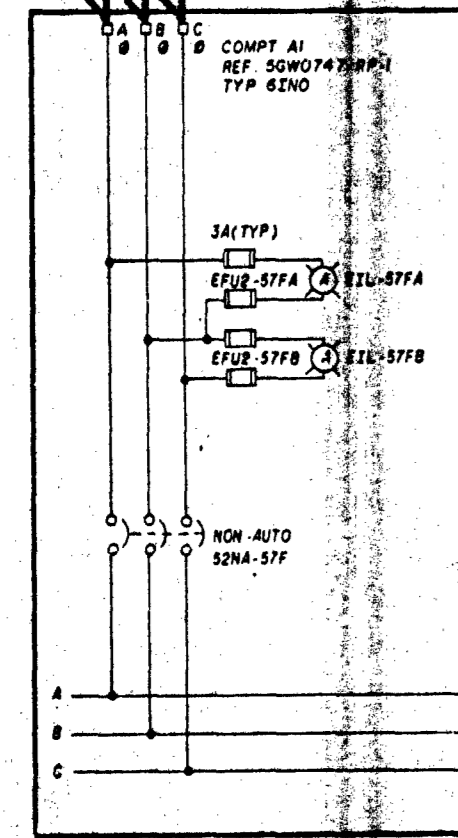
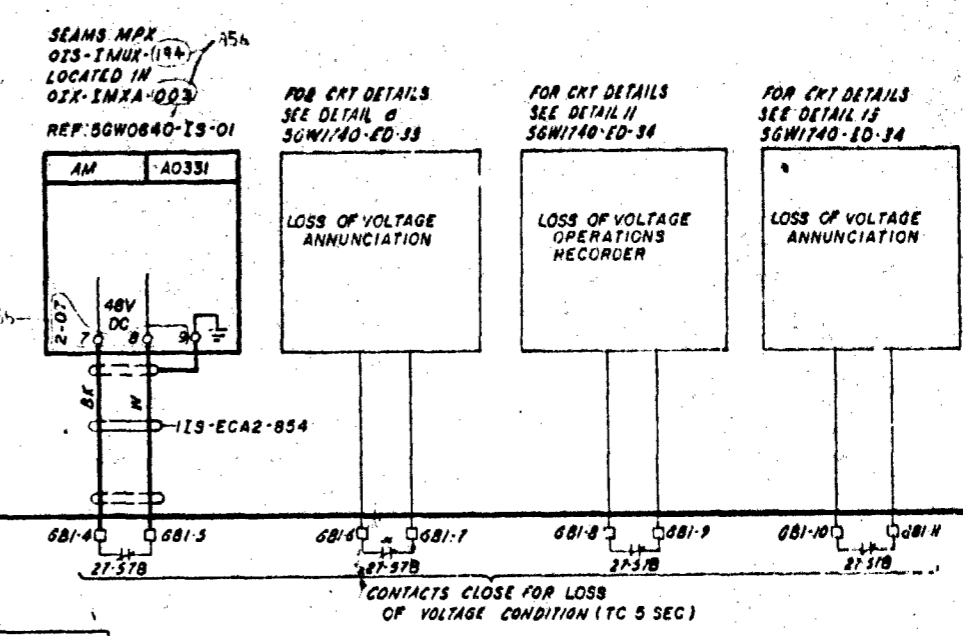
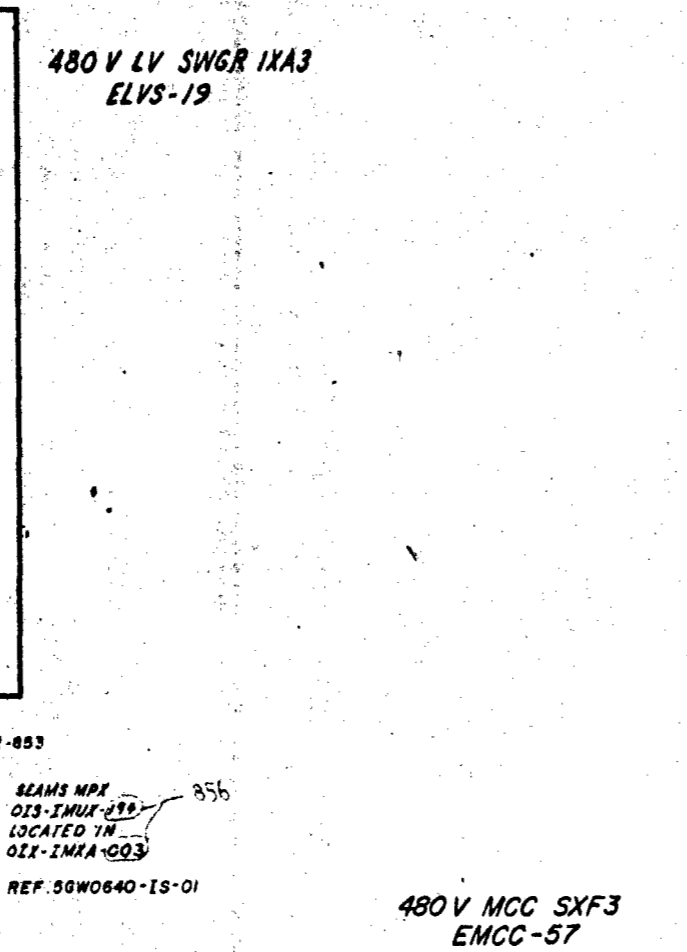
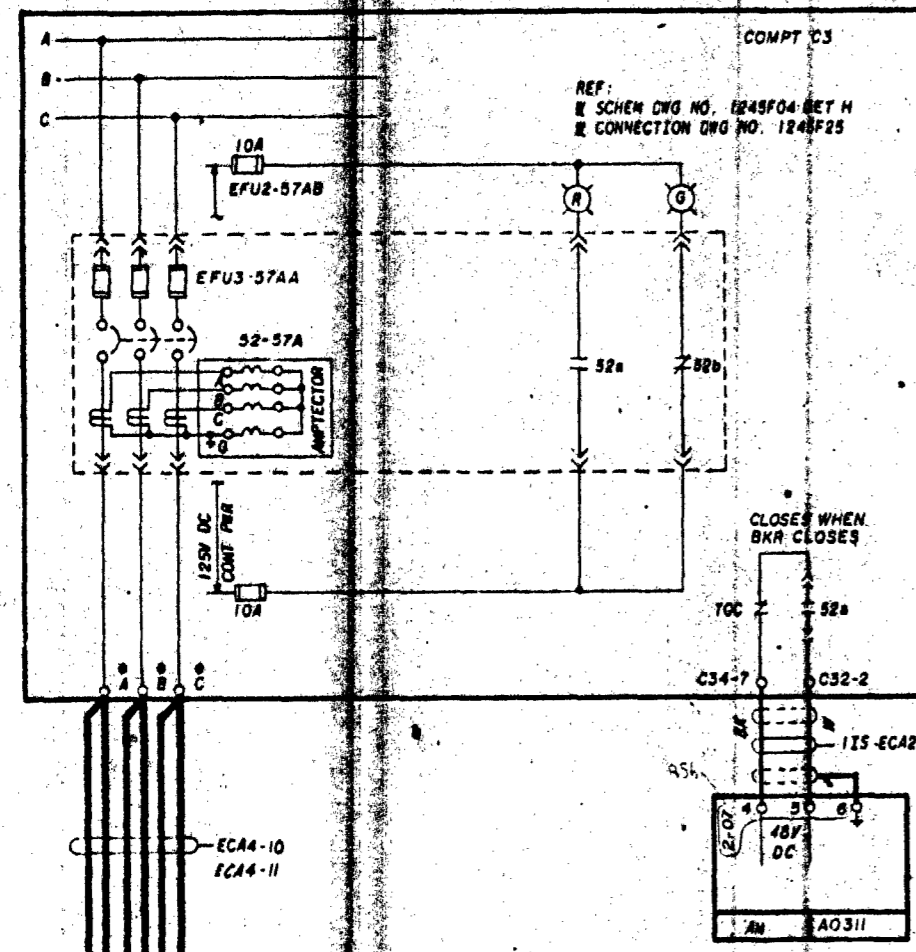


NOTES
1 FOR GENERAL NOTES AND SYMBOLS SEE DWG 56W1740-ED-01



Docket # 58-438
Compt. 1 # 830 to 836
Dwg 3-25-87 of Document
REGULATORY DOCKET FILE

P.R.C
APERTURE
CARD

NO.	DATE	BY	CHKD.	APP'D.	REVISION
1	12-20-80	RELOCATED SEAM POINTS A0311 AND A0331, REMOVED COL. B EL.
2	12-16-79	CHANGED UNDERVOLTAGE TO LOSS OF VOLTAGE, ADDED REF DWG 56W 54 NO. 8, ADDED TIME SETTING TO T.O. 1.1

SCALE: EXCEPT AS NOTED

GENERAL UNIT 1

SYSTEM SCHEMATIC
480V NORMAL AC
AUX POWER DISTRIBUTION SYSTEM

BELLEFONTE NUCLEAR PLANT
TENNESSEE VALLEY AUTHORITY
DIVISION OF ENGINEERING DESIGN

APPROVED: [Signature]
KNOXVILLE 4-16-79

56W1740-ED-17