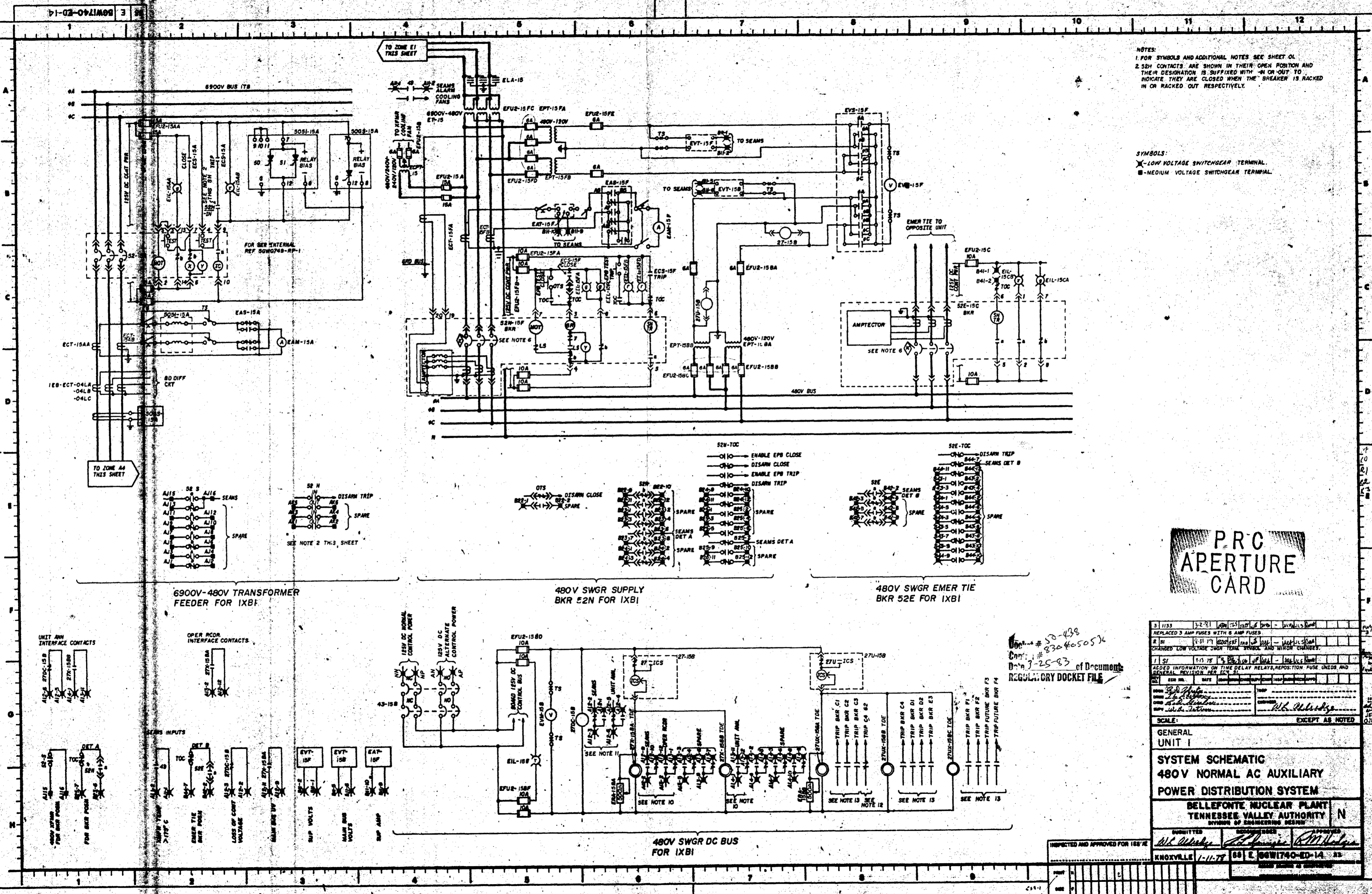


NOTES:
 1. FOR SYMBOLS AND ADDITIONAL NOTES SEE SHEET 01.
 2. 52H CONTACTS ARE SHOWN IN THEIR OPEN POSITION AND THEIR DESIGNATION IS SUFFIXED WITH -IN OR -OUT TO INDICATE THEY ARE CLOSED WHEN THE BREAKER IS RACKED IN OR RACKED OUT RESPECTIVELY.

SYMBOLS:
 X - LOW VOLTAGE SWITCHGEAR TERMINAL.
 ■ - MEDIUM VOLTAGE SWITCHGEAR TERMINAL.



6900V-480V TRANSFORMER FEEDER FOR IXBI

480V SWGR SUPPLY BKR 52N FOR IXBI

480V SWGR EMER TIE BKR 52E FOR IXBI

480V SWGR DC BUS FOR IXBI

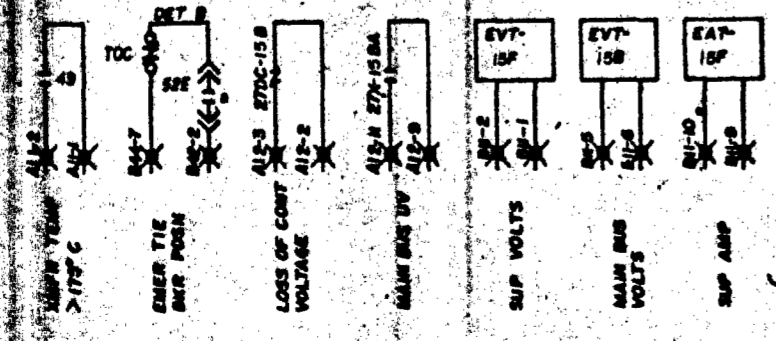
P R C
 APERTURE
 CARD

UNIT ANN INTERFACE CONTACTS

OPER RCOR INTERFACE CONTACTS



SEAMS INPUTS



50-438
 8304050536
 Date 3-25-83 of Document
 REGULATORY DOCKET FILE

3/11/83	3-2-81	REVISED	W. H. HOLMES
REPLACED 3 AMP FUSES WITH 6 AMP FUSES			
CHANGED LOW VOLTAGE SWGR TRIP SYMBOL AND MINOR CHANGES			
ADDED INFORMATION ON TIME DELAY RELAYS, REPOSITION FUSE UNITS AND GENERAL REVISION PER ECU 51			
DATE	BY	APPROVED	REVISION
3/11/83	W. H. HOLMES	W. H. HOLMES	1
SCALE: EXCEPT AS NOTED			
GENERAL UNIT 1			
SYSTEM SCHEMATIC			
480V NORMAL AC AUXILIARY			
POWER DISTRIBUTION SYSTEM			
BELLEFONTE NUCLEAR PLANT			
TENNESSEE VALLEY AUTHORITY			
DIVISION OF ENGINEERING DESIGN			
DATE	BY	APPROVED	REVISION
1-11-77	W. H. HOLMES	W. H. HOLMES	1
KNOXVILLE 1-11-77 88 E 88W1740-ED-1A 23			

INSPECTED AND APPROVED FOR 1887E