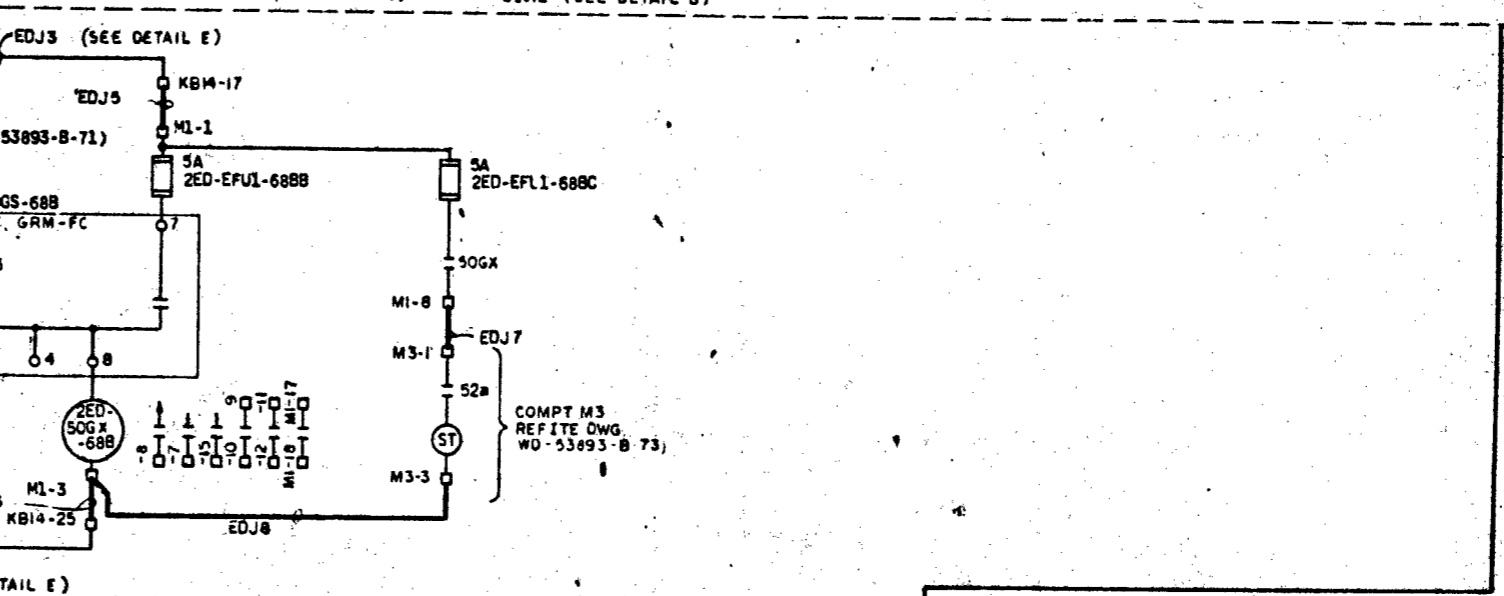
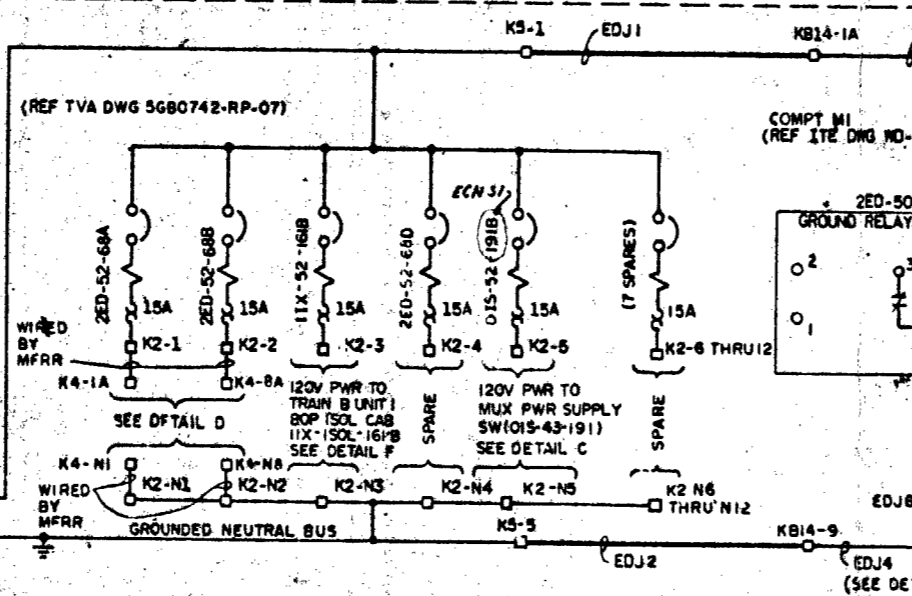
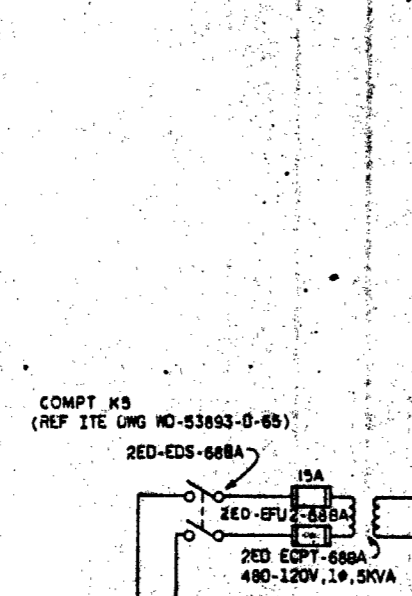
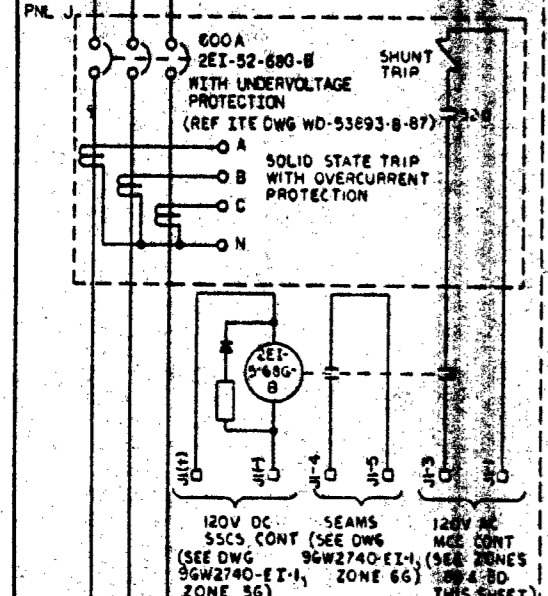
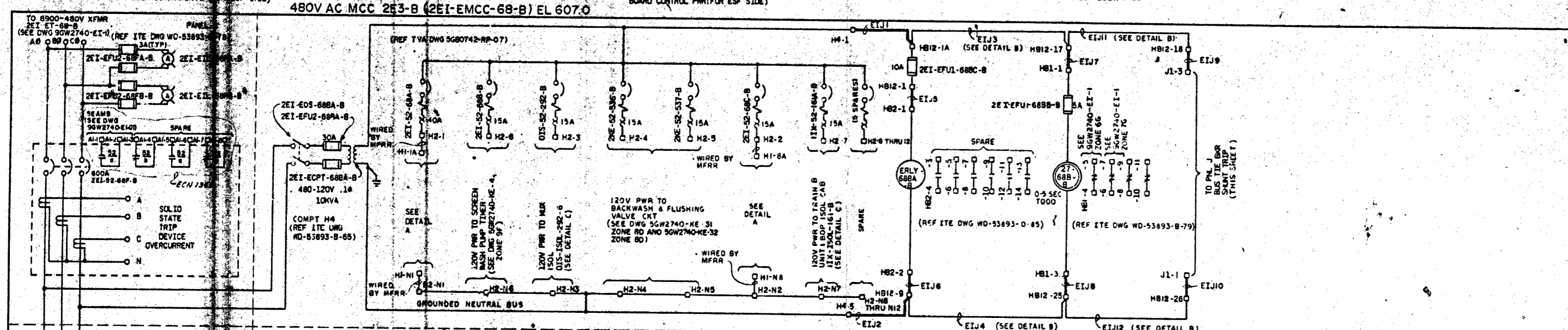


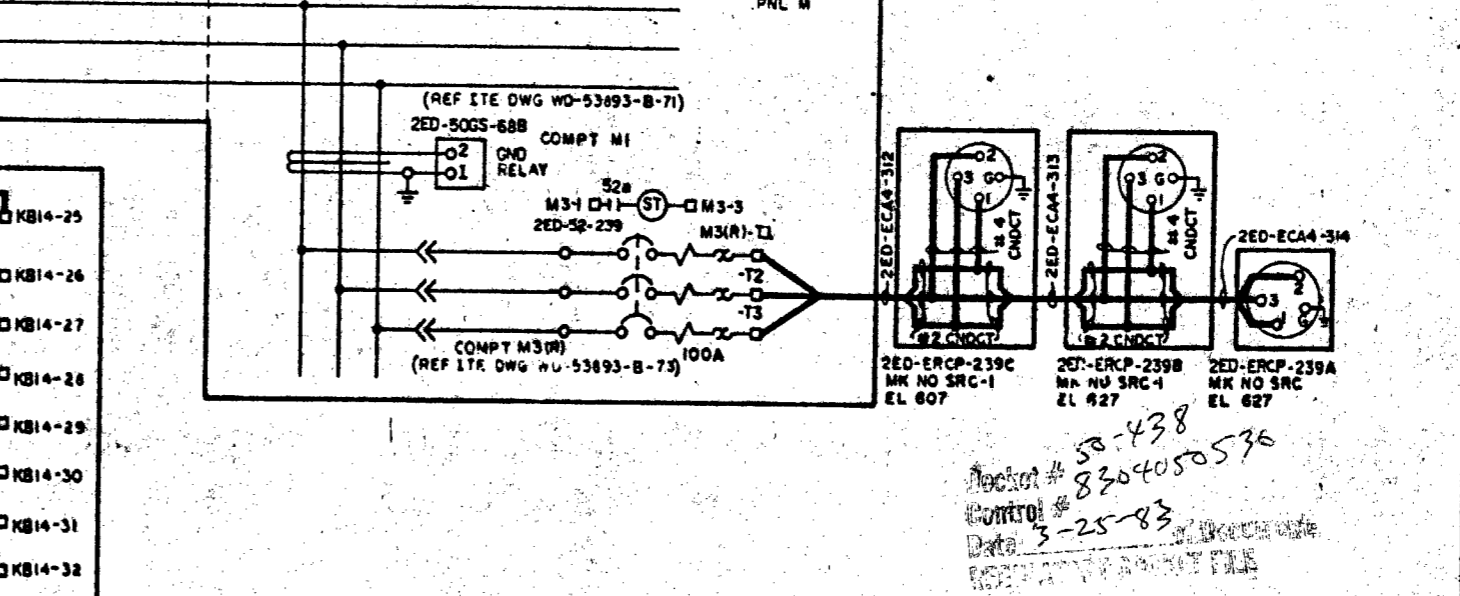
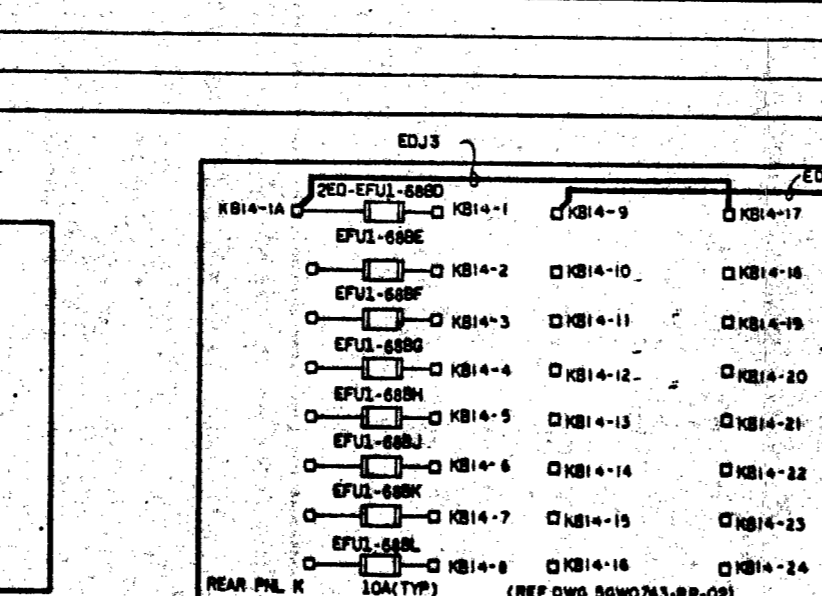
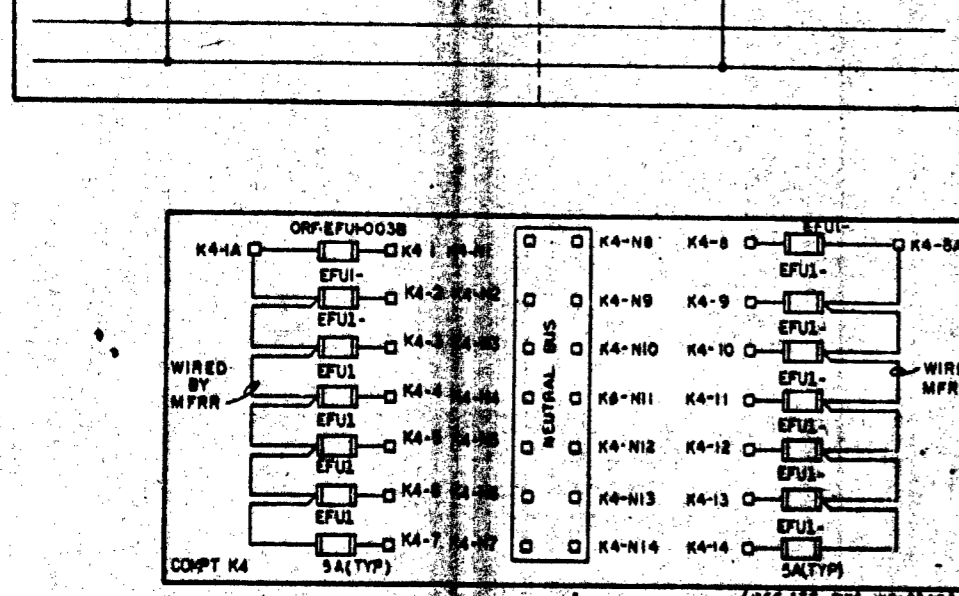
NOTES:  
 1. 480V MCC MFRFR L-T-E IMPERIAL CORP, CONTR NO 78K5-86242.  
 2. MOTOR CONTROL CENTER TERMINAL BLOCK DESIGNATIONS ARE SHOWN AS FOLLOWS:  
 FOR COMPT TERMINAL BLOCKS (MOUNTED INSIDE COMPARTMENTS OF PANELS H & K AND REAR OF COMPARTMENTS LOCATED IN ALL OTHER PANELS)  
 H 2-1 TERMINAL NO COMPARTMENT PANEL  
 FOR COMMON RELAY MOUNTING PANELS (REAR OF PANELS H & K ONLY)  
 H 2-1 TERMINAL NO COMPARTMENT PANEL  
 H 2-1 TERMINAL NO BACK PANEL  
 H 2-1 TERMINAL NO BACK PANEL  
 3. SYSTEM JUMPERS TO BE FIELD WIRED ARE SHOWN PREFIXED WITH SYSTEM DESIGNATIONS EI OR ED AND INDICATED BY A HEAVY LINE. COMPLETE JUMPER DESIGNATION WILL INCLUDE THE UNID OF APPLICABLE ENCLOSURE. EXAMPLE: 2E1-EMCC-68-B-EI1.  
 4. SEE CABLE PROGRAM FOR COMPLETE CABLE INFORMATION.  
 5. BOP ISOLATOR MFRFR ELECTROMAX INSTRUMENTS INC, CONTR NO 79K12-822988.



REFERENCE DRAWINGS:  
 96W2733-EI-1,2,3,4,5,6,7,8,9,10,11,12,13,14,15,16,17,18,19,20,21,22,23,24,25,26,27,28,29,30,31,32,33,34,35,36,37,38,39,40,41,42,43,44,45,46,47,48,49,50,51,52,53,54,55,56,57,58,59,60,61,62,63,64,65,66,67,68,69,70,71,72,73,74,75,76,77,78,79,80,81,82,83,84,85,86,87,88,89,90,91,92,93,94,95,96,97,98,99,100

SYMBOLS:  
 □ MOTOR CONTROL CENTER COMPT TERMINAL  
 ○ DEVICE TERMINAL

**PRC APERTURE CARD**



INTAKE PUMPING STATION UNIT 2

SYSTEM SCHEMATIC  
 480V CLASS IE AC AUX POWER  
 DISTRIBUTION SYSTEM FOR MCC 2E3-B

BELLEFONTE NUCLEAR PLANT  
 TENNESSEE VALLEY AUTHORITY  
 DIVISION OF ENGINEERING DESIGN

SCALE: EXCEPT AS NOTED

DATE: 8-25-83

INSPECTED AND APPROVED FOR ISSUE: [Signature]

8-18-77