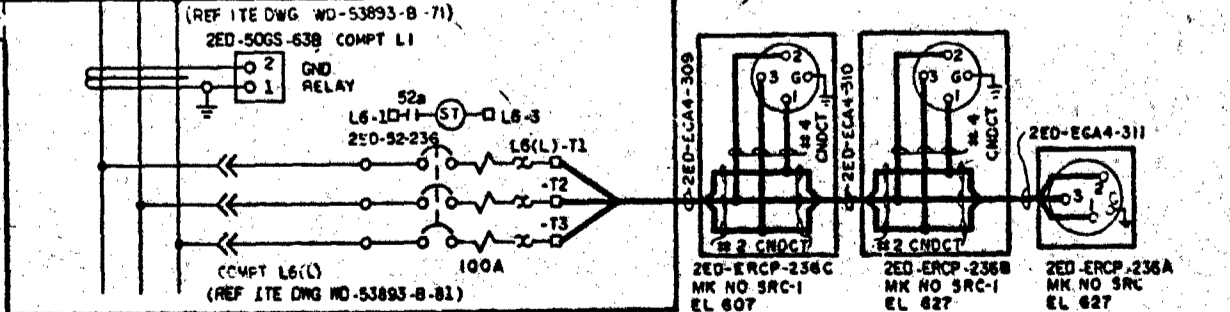
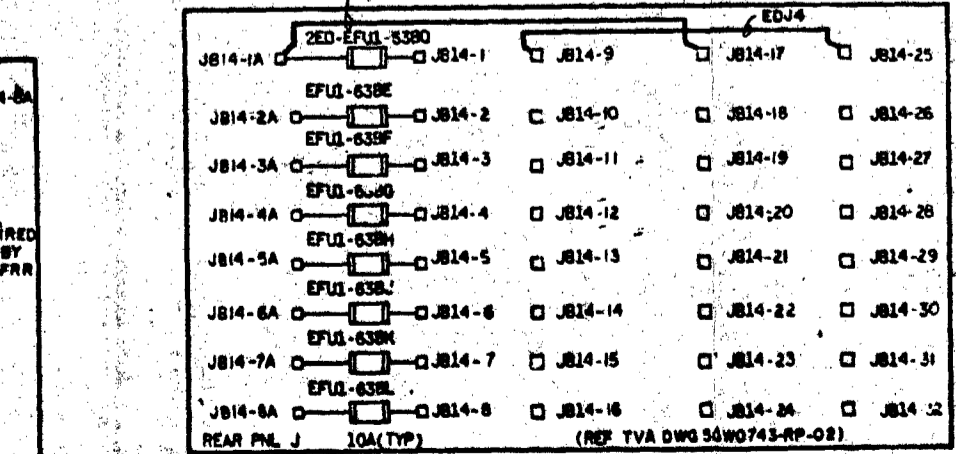
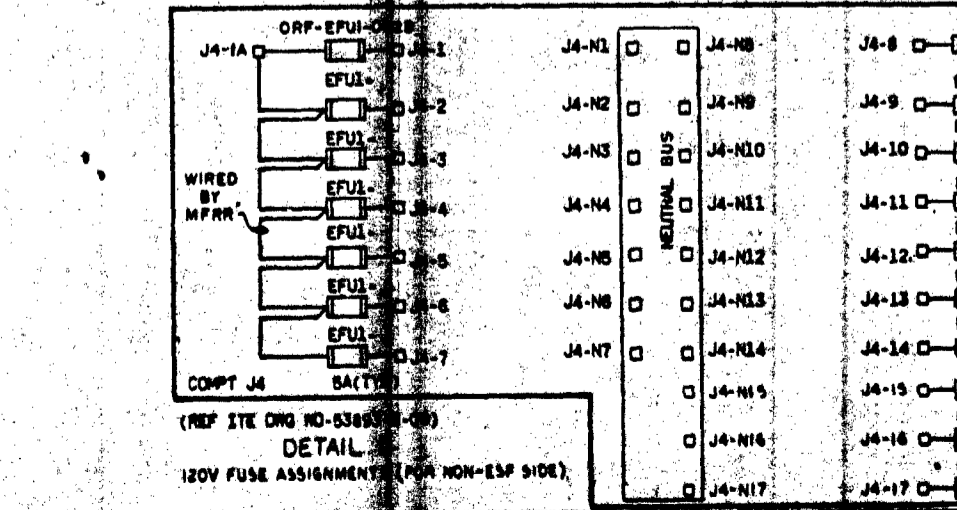
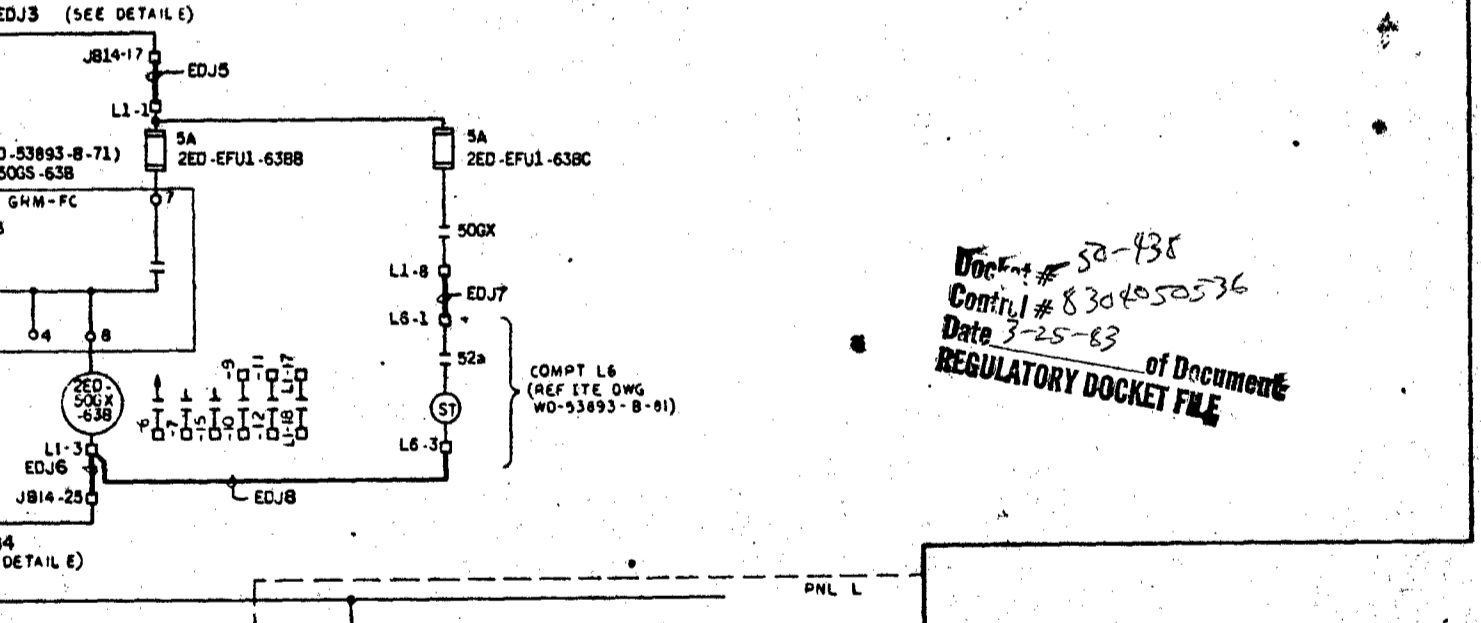
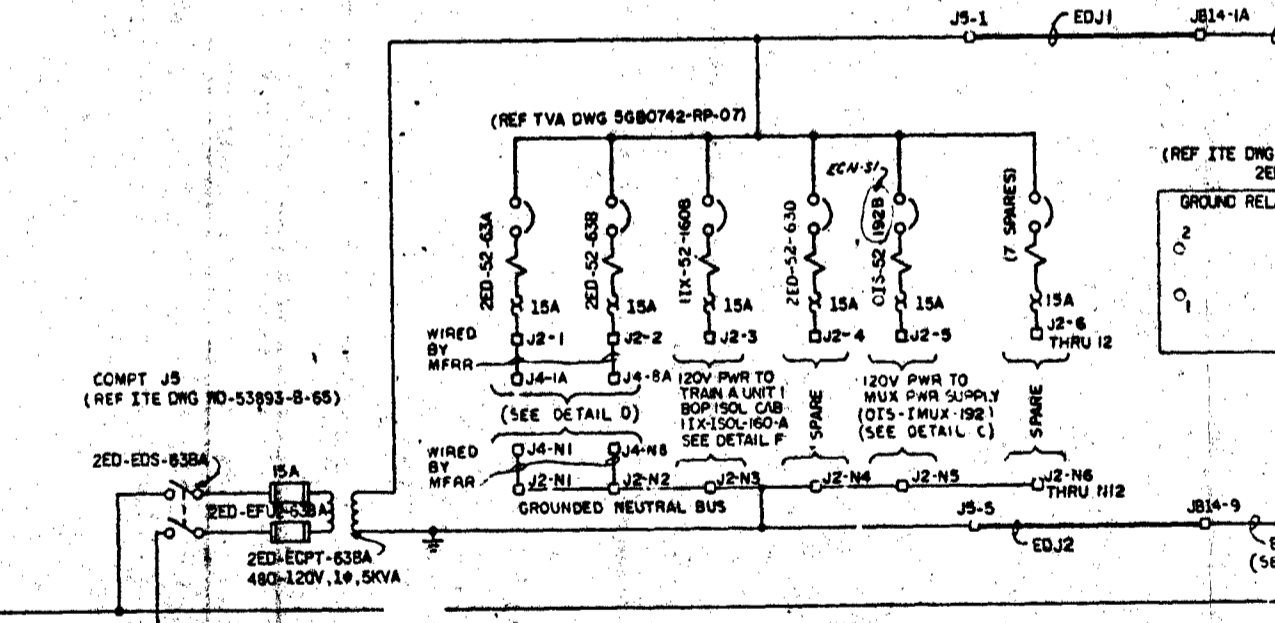
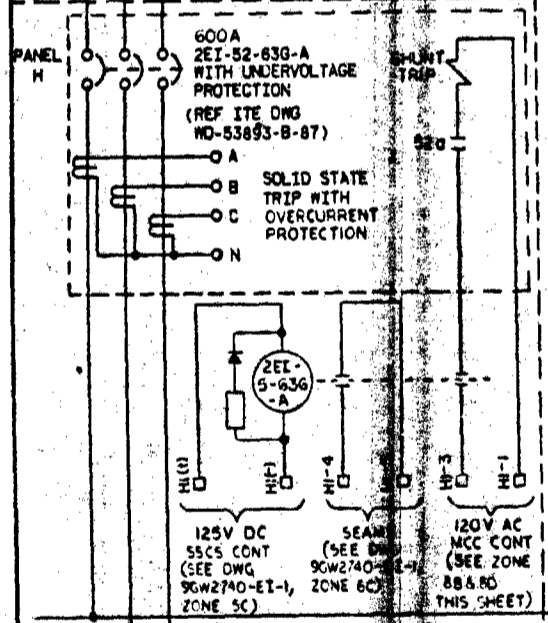
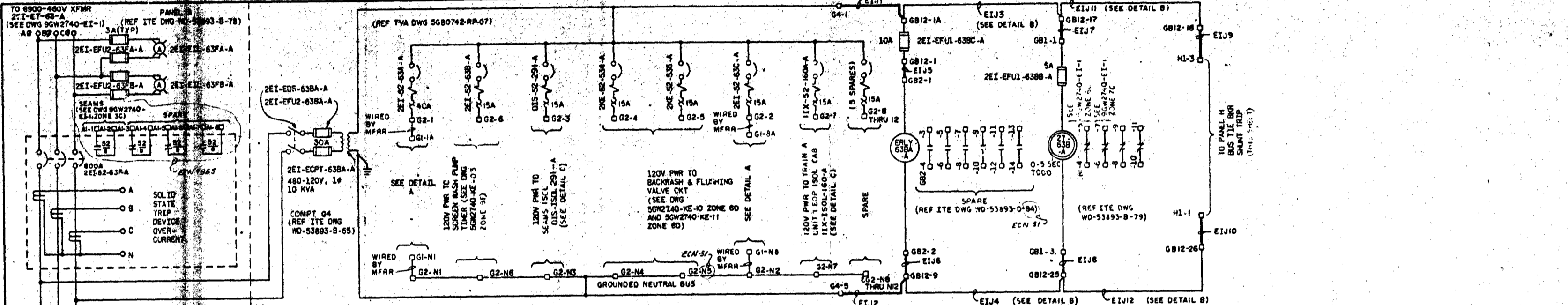


NOTES:
 1. 480V MCC MFR 1-T2 IMPERIAL CORP, CONTR NO 76K5-8242.
 2. MOTOR CONTROL CENTER TERMINAL BLOCK DESIGNATIONS ARE SHOWN AS FOLLOWS:
 FOR COMPT TERMINAL BLOCKS (MOUNTED INSIDE COMPARTMENTS OF PANELS G, B, J AND REAR OF COMPARTMENTS LOCATED IN ALL OTHER PANELS)
 FOR COMMON RELAY MOUNTING PANELS (REAR OF PANELS G, B, J ONLY)
 3. SYSTEM JUMPERS TO BE FIELD WIRED ARE SHOWN PREFIXED WITH SYSTEM DESIGNATIONS ET OR ED AND INDICATED BY A HEAVY LINE. COMPLETE JUMPER DESIGNATION WILL INCLUDE THE UNIT OF THE APPLICABLE ENCLOSURE. EXAMPLE: 2E1-EMCC-63-A-EI11
 4. SEE CABLE PROGRAM FOR COMPLETE CABLE INFORMATION.
 5. BOP ISOLATOR MFR ELECTROMAX INSTRUMENTS INC, CONTR NO 79K12-822988.

480V AC 2E3-A (2E1-EMCC-63-A) EL 607.0



Doc # 52-438
 Control # 830450536
 Date 3-25-83
 of Document
 REGULATORY DOCKET FILE

PRC
 APERTURE
 CARD

REFERENCE DRAWINGS:
 9KW2732-EI-1, 2--- 480V MCC 2E3-A SINGLE LINE

SYMBOLS:
 □ MOTOR CONTROL CENTER COMPT TERMINAL
 ○ DEVICE TERMINAL

REVISIONS:
 ECN 1369-ADDED CONTACT FOR MAIN FOR BOP POSITION INPUT TO SEAMS.
 CHANGED TERMINAL NUMBERS.
 ECN 1370-ADDED CONTACT FOR MAIN FOR BOP POSITION INPUT TO SEAMS.
 ECN 1371-ADDED CONTACT FOR MAIN FOR BOP POSITION INPUT TO SEAMS.
 ECN 572-REV FUSES & USED SPARE RELAYS FOR RE SYSTEM.
 ECN 442-MOVE ASW PUMP MOT HTR FUSE FROM IT TO NON-IT FUSE PNL.
 ECN 334-ADDED 120V, 1 POLE BREAKERS, 31-VARIOUS MINOR CHANGES.

SCALE: NONE EXCEPT AS NOTED

INTAKE PUMPING STATION
 UNIT 2

SYSTEM SCHEMATIC
 480V CLASS 1E AC AUX POWER
 DISTRIBUTION SYSTEM FOR MCC 2E3-A

BELLEFONTE NUCLEAR PLANT
 TENNESSEE VALLEY AUTHORITY
 DIVISION OF ENGINEERING DESIGN

SUBMITTED: [Signature]
 RECOMMENDED: [Signature]
 APPROVED: [Signature]
 INSPECTED AND APPROVED FOR ISSUE: [Signature]
 KNOXVILLE 8-18-77 98 E 9GM2740-EI-2 R3