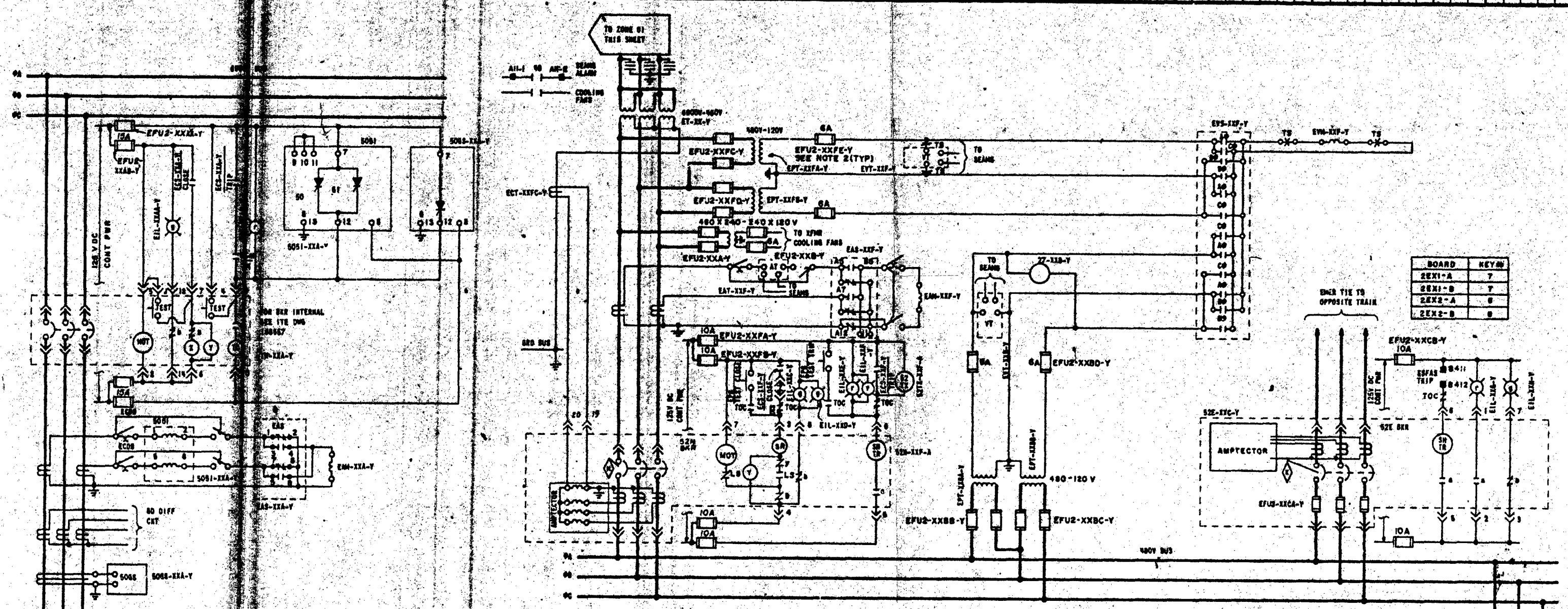
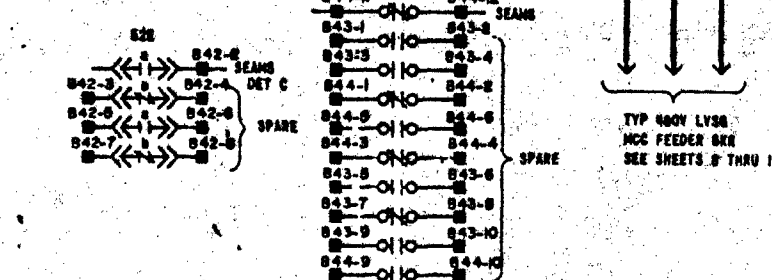
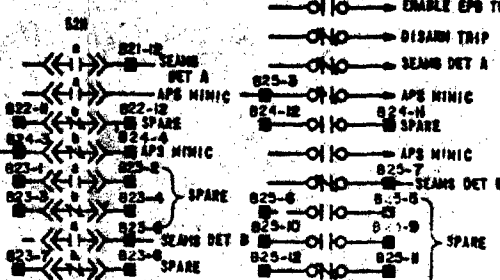
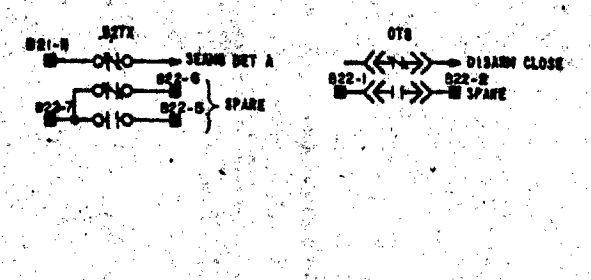
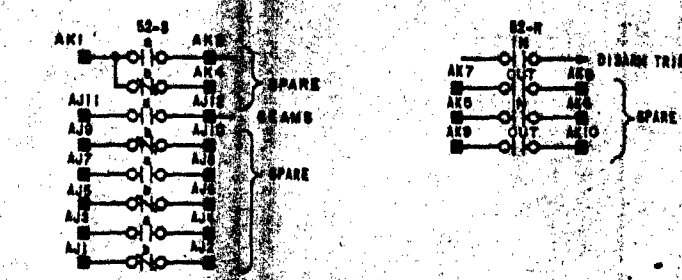


NOTES
1. FOR GENERAL NOTES SEE SHEET 01.
2. FOR DEVICE UNITS REPLACE XX WITH SPUR NUMBER, AND REPLACE Y WITH TRAIN DESIGNATION.
FOR FUSE Q10'S SEE TABULATION ON THIS SHEET.



BOARD KEY

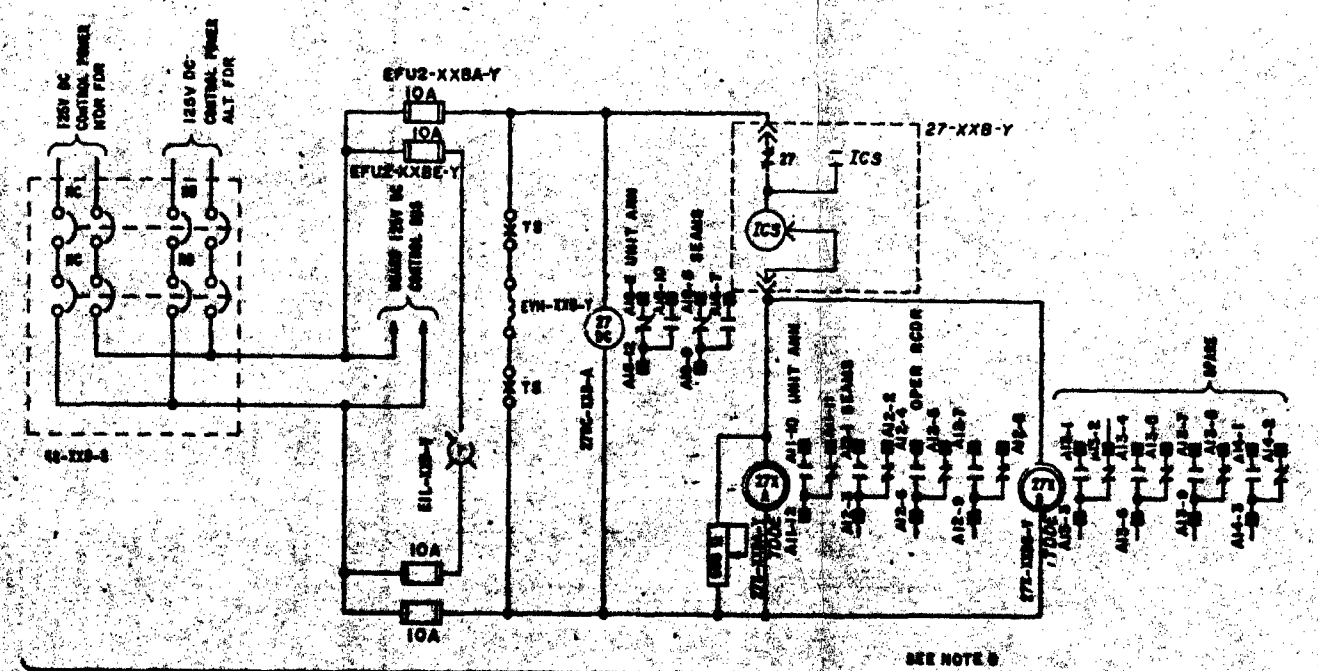
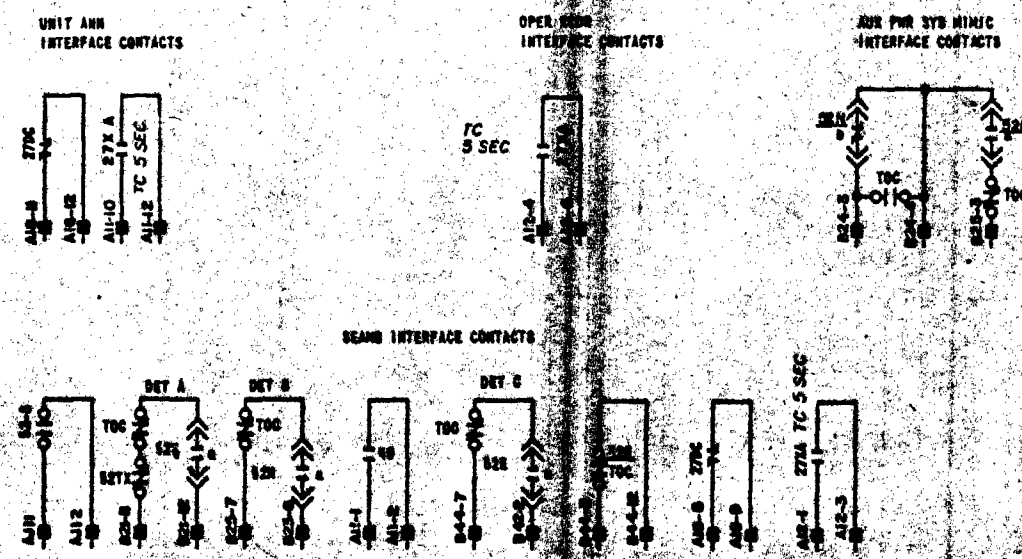
2EX1-A	7
2EX1-B	7
2EX2-A	8
2EX2-B	8



6900V-480V TRANSFORMER FEEDER

480V SWGR SUPPLY BKR 52N

480V SWGR EMER TIE BKR 52E



FUSE TABULATION

FUSE	2EX1-A	2EX1-B	2EX2-A	2EX2-B
EFU2-XXBA-Y	EFU2-24BA-A	EFU2-24BA-B	EFU2-24BA-A	EFU2-24BA-B
EFU2-XXBC-Y	EFU2-24BC-A	EFU2-24BC-B	EFU2-24BC-A	EFU2-24BC-B
EFU2-XXCA-Y	EFU2-24CA-A	EFU2-24CA-B	EFU2-24CA-A	EFU2-24CA-B
EFU2-XXCB-Y	EFU2-24CB-A	EFU2-24CB-B	EFU2-24CB-A	EFU2-24CB-B
EFU2-XXDA-Y	EFU2-24DA-A	EFU2-24DA-B	EFU2-24DA-A	EFU2-24DA-B
EFU2-XXDB-Y	EFU2-24DB-A	EFU2-24DB-B	EFU2-24DB-A	EFU2-24DB-B
EFU2-XXEA-Y	EFU2-24EA-A	EFU2-24EA-B	EFU2-24EA-A	EFU2-24EA-B
EFU2-XXEB-Y	EFU2-24EB-A	EFU2-24EB-B	EFU2-24EB-A	EFU2-24EB-B
EFU2-XXFA-Y	EFU2-24FA-A	EFU2-24FA-B	EFU2-24FA-A	EFU2-24FA-B
EFU2-XXFB-Y	EFU2-24FB-A	EFU2-24FB-B	EFU2-24FB-A	EFU2-24FB-B
EFU2-XXGA-Y	EFU2-24GA-A	EFU2-24GA-B	EFU2-24GA-A	EFU2-24GA-B
EFU2-XXGB-Y	EFU2-24GB-A	EFU2-24GB-B	EFU2-24GB-A	EFU2-24GB-B
EFU2-XXHA-Y	EFU2-24HA-A	EFU2-24HA-B	EFU2-24HA-A	EFU2-24HA-B
EFU2-XXHB-Y	EFU2-24HB-A	EFU2-24HB-B	EFU2-24HB-A	EFU2-24HB-B
EFU2-XXIA-Y	EFU2-24IA-A	EFU2-24IA-B	EFU2-24IA-A	EFU2-24IA-B
EFU2-XXIB-Y	EFU2-24IB-A	EFU2-24IB-B	EFU2-24IB-A	EFU2-24IB-B

Docket # 83-458
Control # 8304050536
Date 3-25-83 of Document
REGULATORY DOCKET FILE

PRO APERTURE CARD

REVIEWED: N/A
RC(CIVIL): N/A
RE(ELEC): [Signature]
RM(MECH): N/A
INSPECTED AND APPROVED FOR ISSUE: [Signature]
KNOXVILLE 1-72-79 88 E 56W2740-EI-08

SCALE: EXCEPT AS NOTED
GENERAL UNIT 2
SYSTEM SCHEMATIC
480V CLASS 1E AC
AUXILIARY POWER SYSTEM

BELLEFONTE NUCLEAR PLANT
TENNESSEE VALLEY AUTHORITY
DIVISION OF ENGINEERING DESIGN