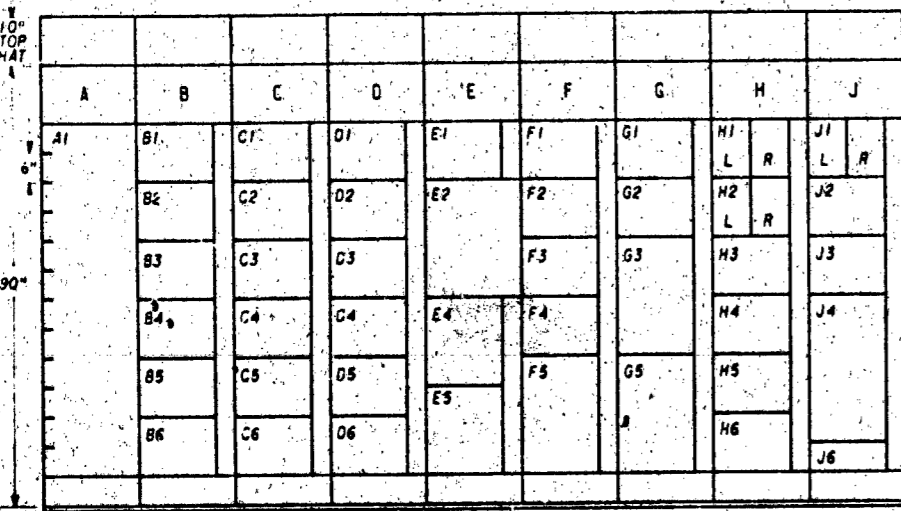
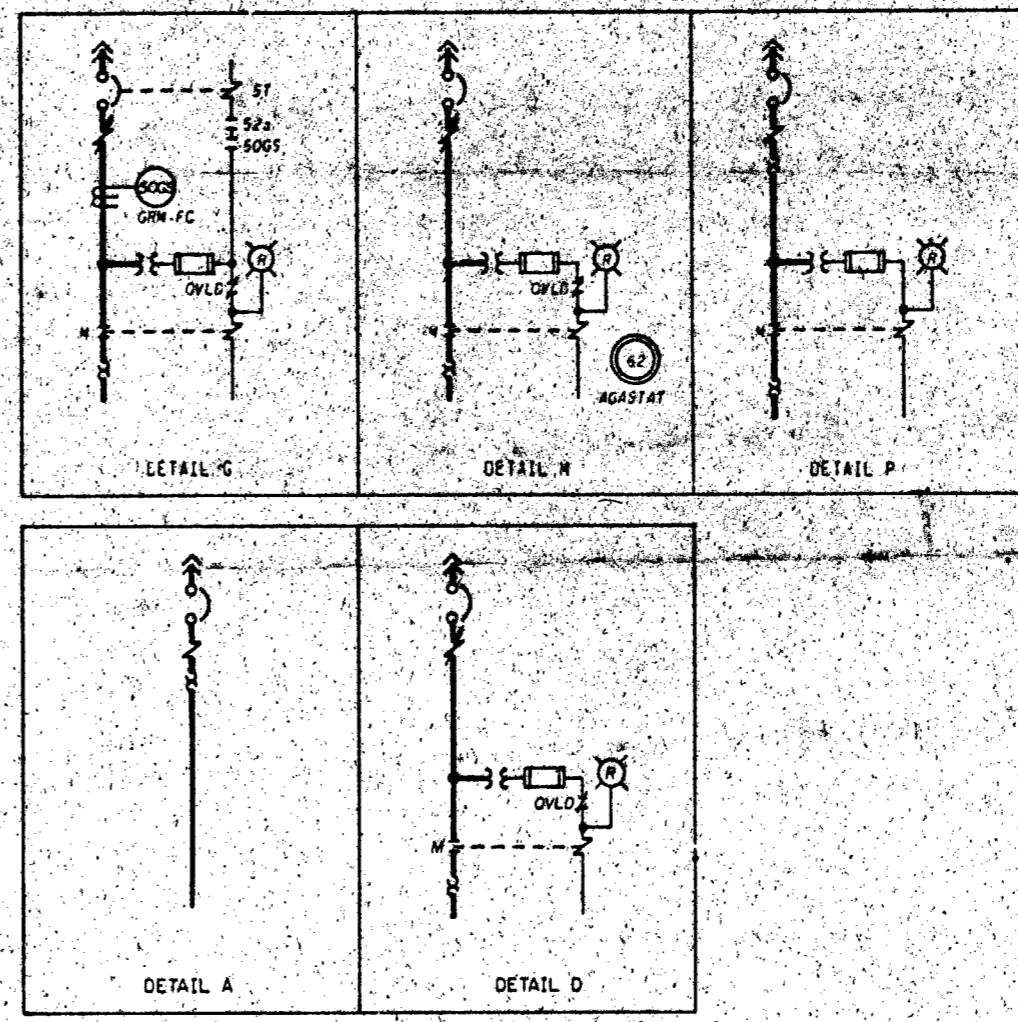


COMP NO.	LOAD	UNID	DETAIL	LOAD SIZE	SCHEMATIC DWG REFERENCE
A1	MAIN BREAKER	1ED-52NA-42F	SEE KEY DTAG		
B1	RECLAIMED CAUSTIC PUMP A	OCN-EMOT-333	D	3HP	5GW0740-CN-11
B2	SPARE	1ED	D		
B3	TURBINE BLDG DEMINERALIZER EXHAUST FAN	OVT-EMOT-018	M	20HP	5GW0740-VT-19
B4	FW CHEMICAL ADD HYDRAZINE PUMP FOR AUX BOILER	OCT-EMOT-010	D	0.25HP	5GW0740-CT-02
B5	FW CHEMICAL ADD AMMONIA PUMP FOR AUX BOILER	OCT-EMOT-019	D	0.25HP	5GW0740-CT-02
B6	RECLAIMED ACID PUMP NO. 1	OCN-EMOT-328	D	75HP	5GW0740-CN-13
C1	SPARE	1ED	D		
C2	SPARE	1ED	D		
C3	WATER TREATMENT WASTE SUMP PUMP A	CWE-EMOT-013	D	0.75HP	5GW0740-WE-04
C4	FW CHEMICAL ADD HYDRAZINE PUMP FOR UNIT 1	ICT-EMOT-011	D	0.25HP	5GW1740-CT-01
C5	FW CHEMICAL ADD AMMONIA PUMP FOR UNIT 1	ICT-EMOT-016	D	0.25HP	5GW1740-CT-01
C6	WASTE NEUTRALIZATION TANK SUMP	OCN-EMOT-307	D	3HP	5GW0740-CN-11
C7	AMMONIA SUPPLY PUMP	OCN-EMOT-412	D	2HP	5GW0740-CN-12
C8	SPARE	1ED	D		
C9	SPARE	1ED	D		
C4	FW CHEMICAL ADD HYDRAZINE M. H. PRESSURE PUMP	OCT-EMOT-009	D	0.25HP	5GW0740-CT-04
C5	FW CHEMICAL ADD AMMONIA SPARE PUMP	CT-EMOT-017	D	0.25HP	5GW0740-CT-02
C6	RECLAIMED AMMONIA PUMP 1	OCN-EMOT-326	D	75HP	5GW0740-CN-12
E1	MCC LOSS OF VOLTAGE RLY		SEE KEY DTAG		
E2	120V-1P-CRT BKH COMPT		SEE KEY DTAG		
E4	FUSE COMPT		SEE KEY DTAG		
E5	MCC CONTROL TRANSFORMER AND DISCONNECT SWITCH		SEE KEY DTAG		
F1	SPARE	1ED	D		
F2	FINAL WASTE COLLECTION TANK PUMP	OCN-EMOT-330	D	1HP	5GW0740-CN-14
F3	FINAL WASTE COLLECTION TANK PUMP NO. 1	OCN-EMOT-331	D	3HP	5GW0740-CN-14
F4	HIGH CRUD FILTER FLOW FEED PUMP A	OCN-EMOT-335	D	1HP	5GW0740-CN-18
F5	HIGH CRUD-LOW CONDUCTIVITY WASTE PUMP NO. 1	OCN-EMOT-335	D	30HP	5GW0740-CN-10
G1	SPARE	1ED	D		
G2	EL 673 TB UNIT MTR FAN	OVT-EMOT-060	D	1HP	5GW0740-VU-13
G3	RECLAIMED CAUSTIC TANK MTR	OCN-EMOT-407A	P	50KW	5GW0740-CN-17
G5	RECLAIMED CAUSTIC TANK MTR	OCN-EMOT-407C	P	50KW	5GW0740-CN-16
H1L	MTR FILTRATION PLY CONT PNL	OIX-EXPT-033	A	50KVA	5GW0740-YM-02
H1R	ALUM SLUDGE DEWATERING PNL	OIX-EXPT-034	A	17KVA	5GW0740-YM-11
H2L	ENDS DMRALZR WASTE FLTR PNL	OIX-EXPT-022	A	1KVA	5GW0740-CN-02
H2R	ENDS DMRALZR CONT PNL XFRM	OCN-43-001A	A	12KVA	5GW0740-CN-02
H3	SPARE	1ED	D		
H4	TANK VENT FAN	OVT-EMOT-611	D	0.5HP	5GW0740-VT-18
H5	DEMINERALIZER WASTE SUMP PUMP A	CWE-EMOT-011	D	3HP	5GW0740-WE-03
H6	DEMINERALIZED SUPPLY PUMP A	OYM-EMOT-034	D	20HP	5GW0740-YM-05
H7L	TURB BLDG SUMP LEO MON	OIR-TLRM-039	A	25KVA	5GW0640-TR-02
H7R	JIB CRANE FOR CRUC FLT RM	OCN-MGRM-018	J	25HP	5GW0740-MM-02

COMP NO.	LOAD	UNID	DETAIL	LOAD SIZE	SCHEMATIC DWG REFERENCE
J2	DEMINERALIZED SUPPLY PUMP B	OYM-EMOT-038	D	20HP	5GW0740-YM-05
J3	TURBINE BLDG STATION SUMP SAMPLING PUMP	OYQ-EMOT-330	D	0.5HP	
J4	LOW CRUD-LOW CONDUCTIVITY WASTE PUMP NO. 1	OCN-EMOT-324	D	75HP	5GW0740-CN-18
J8	FUTURE - 6 INCH	1ED			



EL 649 COL T8D



- NOTES
- 480V MOTOR CONTROL CENTER PROVIDED ON TPA CONTRACT NO. 7643-88R2 BY GOULD/ITE.
 - ALL INCLUDED CASE 480V CIRCUIT BREAKERS ARE 30" 600V WITH AN INTERRUPTING RATING OF NOT LESS THAN 25,000 RMS SYMMETRICAL AMPS AT 480V. CIRCUIT BREAKERS SHOWN WITH SHUNT TRIP COILS HAVE A TRIP COIL CAPABLE OF OPERATING AT 95 PERCENT RATED VOLTAGE. ALL 100A FRAME 480V CIRCUIT BREAKERS ARE ITE "JL" SERIES AND THE 400A FRAME 480V CIRCUIT BREAKERS ARE ITE "JL" SERIES.
 - ALL INCLUDED CASE 120V CIRCUIT BREAKERS ARE 1 1/2" 100A FRAME THERMAL MAGNETIC WITH 15A TRIP. ITE "80" SERIES.
 - ALL 5A AND 10A FUSES ARE GOULD/SHANNUT. 5HP-TRIP, FORM 600. WIDGET TYPE 2.
 - ALL CONTROL TRANSFORMERS ARE 1 1/2" 480-120V WITH GROUNDING SECONDARY. THE SECONDARY OF THE 150 VA TRANSFORMER IS FUSED WITH A 1 1/2" SA DUAL-ELEMENT TIME-DELAY BUSSMANN TYPE FNO FUSE. THE SECONDARY OF THE 300 VA TRANSFORMER IS FUSED WITH A 1 1/2" SA DUAL-ELEMENT TIME-DELAY GOULD/SHANNUT TYPE TRW FUSE.
 - GROUND FAULT PROTECTION (50GS) ITE TYPE GRN-FC PICKS UP AT APPROXIMATELY 10 AMPS PRIMARY CURRENT WITH NO INTENTIONAL TIME DELAY.
 - THE PRIMARY OF THE 300VA CONTROL POWER TRANSFORMER IS FUSED WITH A 1 1/2" SA TIME-DELAY BUSSMANN TYPE JHC-15 FUSE.
 - THE MOTOR CONTROL CENTER ARRANGEMENT IS CONTROLLED BY THE FRONT VIEW LOCATED IN THIS DRAWING. COMPARTMENT CONFIGURATION CONTROL DRAWINGS ARE REFERENCED IN THE MOTOR CONTROL CENTER COMPUTERIZED CIRCUIT SCHEDULE. THE MOTOR CONTROL CENTER COMPUTERIZED CIRCUIT SCHEDULE DOCUMENTS DEVICE RATINGS AND ADJUSTABLE CIRCUIT BREAKER SETTINGS.
 - THIS MCC IS NON-CLASS 1E.
 - ALL AGASTAT RELAYS ARE OF THE 7000 SERIES.
- REFERENCED DRAWINGS AND DOCUMENTS
- PLANT AC AUXILIARY POWER SYSTEM SINGLE LINE 2640720-RP-01
 - SINGLE LINE DIAGRAM 480V SWITCHGEAR MCCI 2741728-ED-1
 - 480V NORMAL AC AUXILIARY POWER DISTRIBUTION SYSTEM SCHEMATIC 5081740-ED-24
 - 480V MCC COMPARTMENT TYPICALS 5046747-RP-
 - 480V MCC SXT1 COMPUTERIZED CIRCUIT SCHEDULE 5100762-ED
- SYMBOLS:
-
- MAGNETIC TRIP ONLY CIRCUIT BREAKER (ADJUSTABLE)

PRC APERTURE CARD

Docket # 58-438
Control # 8309050536
Date 3-25-83
of Documents
REGULATORY DOCKET FILE

1	SI	12-14-82	ADD L.S. TO ORIGINAL 1/2" SCALE
2	SI	12-14-82	ADDED LOAD SIZE AND SCHEMATIC DWG REF COLUMN TO TABLES, REVISED NOTES 7 AND 8 AND MOVED KEY DIAGRAM TO SHEET 3. MINOR CHANGE
3	770	12-21-80	ADDED LOAD
4	SI	12-14-82	RECORD DWG REV FOR THE MCC COMPUTERIZED CRT. SCH HISTORICAL DATA BASE
5	SI	2-2-82	INCORPORATED UNID SYS. GEN REV PER EGN 51. VARIOUS

DESIGN: L.C. GIESLER/R.G. LARSEN
DRAWN: M.B. TATUM
CHECKED: M.L. ADP/PA
SCALE: NTS
EXCEPT AS NOTED

TURBINE BUILDING UNITS 1 & 2

SINGLE LINE 480V MCC SXT1 1ED-EMCC-42

BELLEFONTE NUCLEAR PLANT TENNESSEE VALLEY AUTHORITY DIVISION OF ENGINEERING DESIGN

INSPECTED AND APPROVED FOR ISSUE: [Signature]
APPROVED: [Signature]

KNOXVILLE 12-16-78 88 E STW0732-ED-1 RA

COMPANION DWG: STW0732-ED-03 STW0732-ED-02 HAS BEEN VOIDED

THIS DRAWING IS UNDER CONFIGURATION CONTROL