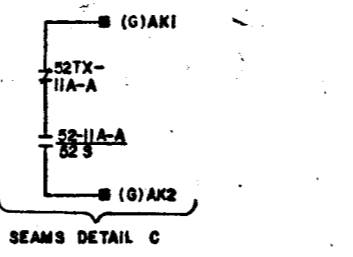
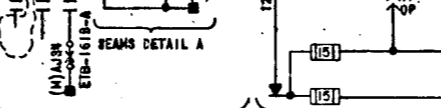
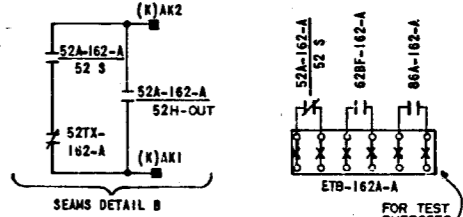
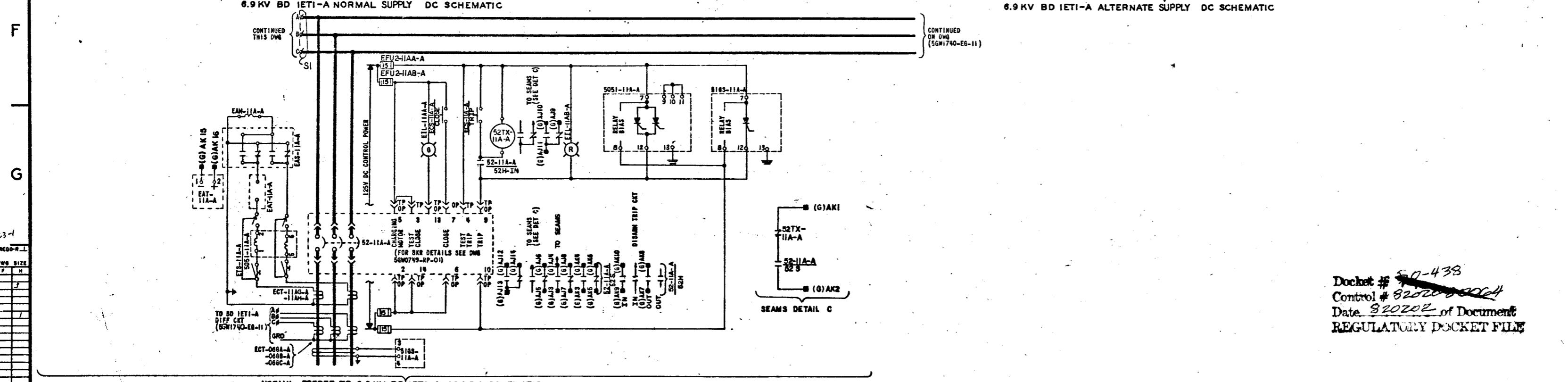
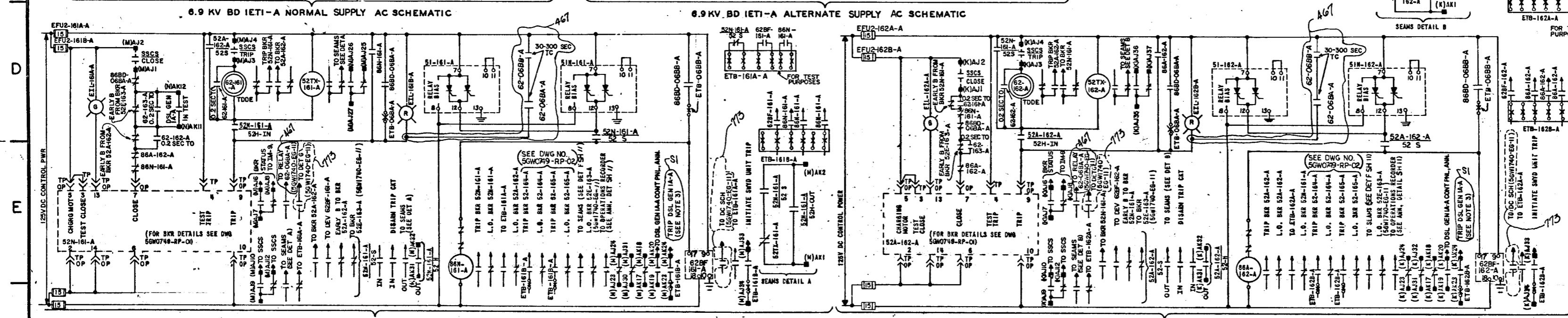


NOTES:
 1. FOR GENERAL NOTES AND REFERENCE DRAWINGS SEE 56W1740-EG-01.
 2. FOR EXTERNAL CABLING DIAGRAM SEE SYSTEM SCHEMATIC 56W1740-EG-02.
 3. A TRIP SIGNAL TO THE DSL GEN IS GENERATED ONLY WHEN THE DSL GEN BRK IS OPEN.

SYMBOLS:
 FOR GENERAL SYMBOLS SEE 56W1740-EG-01.
 ■ - SWGR INTERFACE



APERTURE CARD

R4, ECN 773

4	773	12-11-79	CHANGED 62BF CONTACT NOTATION, & ADDED S2S CONTACT NOTATION.
3	367, SI	5-18-79	INCORPORATED THE NEW & MODIFIED DESIGN REQUIREMENTS FOR BUS TRANSFERS & VOLTAGE ANN POIN 3, AND MINOR CHANGES.
2	SI	1-24-79	MINOR CHANGES.
1	SI, 341	7-19-78	IMPLEMENTED ANTICIPATORY RELAY SCHEME PER ECN 341, MINOR REVISIONS PER SI.
REV	ECN NO.	DATE	DESCRIPTION
DESIGN	D.M. LASHLEY, S.A. MCINTOSH		
APP'D	L.D. GRESLER		
SUPP	A.A. RUSSELL		

GENERAL
 UNIT 1
 SYSTEM SCHEMATIC
 6.9KV CLASS IE AC AUX POWER
 DISTRIBUTION SYSTEM

BELLEFONTE NUCLEAR PLANT
 TENNESSEE VALLEY AUTHORITY
 DIVISION OF ENGINEERING DESIGN

SUBMITTED: [Signature]
 RECOMMENDED: [Signature]
 APPROVED: [Signature]

KNOXVILLE 11-27-77 68 E 56W1740-EG-10 R4
 RECORD DRAWING AS CONSTRUCTED

Docket # 50-438
 Control # 82000-0004
 Date 3/20/02 of Document
 REGULATORY DOCKET FILE

PRINTS REQUIRED

NO.	DESCRIPTION	DATE
1	AS SHOWN	
2	AS SHOWN	
3	AS SHOWN	
4	AS SHOWN	
5	AS SHOWN	
6	AS SHOWN	
7	AS SHOWN	
8	AS SHOWN	
9	AS SHOWN	
10	AS SHOWN	
11	AS SHOWN	
12	AS SHOWN	
13	AS SHOWN	
14	AS SHOWN	
15	AS SHOWN	
16	AS SHOWN	
17	AS SHOWN	
18	AS SHOWN	
19	AS SHOWN	
20	AS SHOWN	