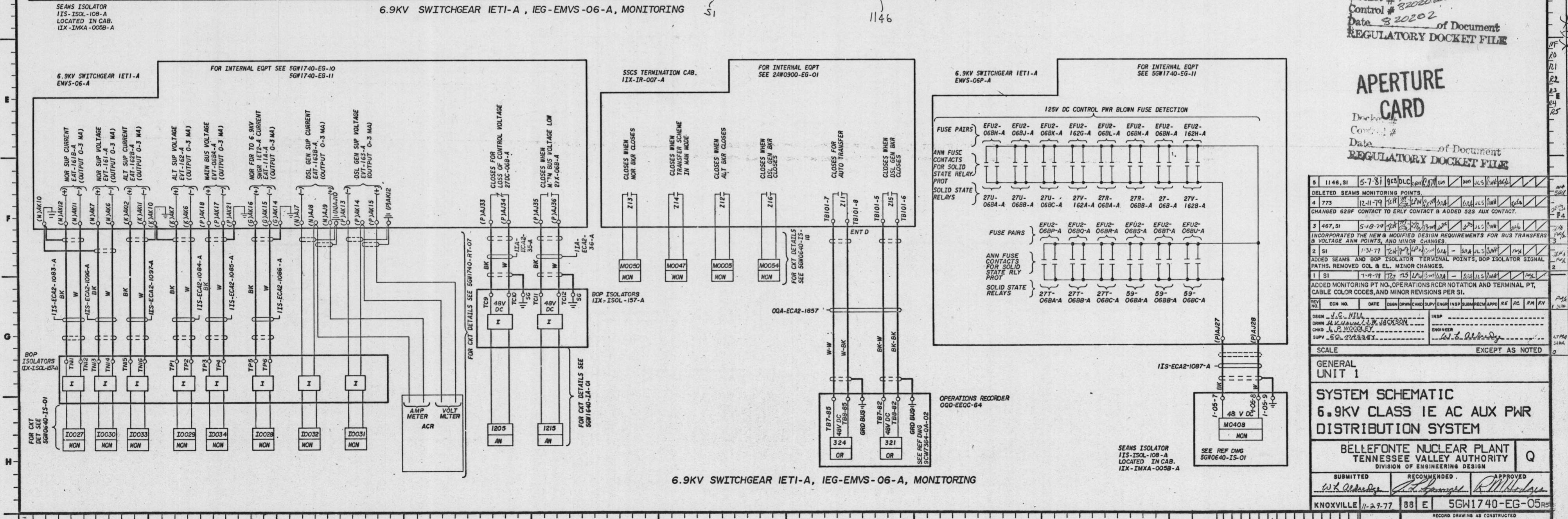


NOTES:
1. FOR GENERAL NOTES AND REFERENCE DRAWINGS SEE 56W1740-EG-01



Docket # 50-438
Control # 8202-20064
Date 3-20-02
of Document
REGULATORY DOCKET FILE

APERTURE CARD
Docket #
Control #
Date
of Document
REGULATORY DOCKET FILE

REV	NO.	DATE	BY	CHKD	APPD	REASON
5	1146, 91	5-7-81	985 DUC
4	775	12-11-79	CHANGED 62P CONTACT TO EARLY CONTACT & ADDED 52S AUX CONTACT.
3	487, 91	5-19-79	INCORPORATED THE NEW & MODIFIED DESIGN REQUIREMENTS FOR BUS TRANSFERS & VOLTAGE ANV POINTS, AND MINOR CHANGES.
2	51	1-31-77	ADDED SEAMS AND BOP ISOLATOR TERMINAL POINTS, BOP ISOLATOR SIGNAL PATHS, REMOVED COL & EL, MINOR CHANGES.
1	51	7-19-76	ADDED MONITORING PT NO. OPERATIONS RCOR NOTATION AND TERMINAL PT, CABLE COLOR CODES, AND MINOR REVISIONS PER SI.

SCALE: EXCEPT AS NOTED

GENERAL UNIT 1

SYSTEM SCHEMATIC
6.9KV CLASS 1E AC AUX PWR DISTRIBUTION SYSTEM

BELLEFONTE NUCLEAR PLANT
TENNESSEE VALLEY AUTHORITY
DIVISION OF ENGINEERING DESIGN

SUBMITTED: [Signature]
RECOMMENDED: [Signature]
APPROVED: [Signature]

KNOXVILLE 11-29-77 88 E 56W1740-EG-05

RECORD DRAWING AS CONSTRUCTED