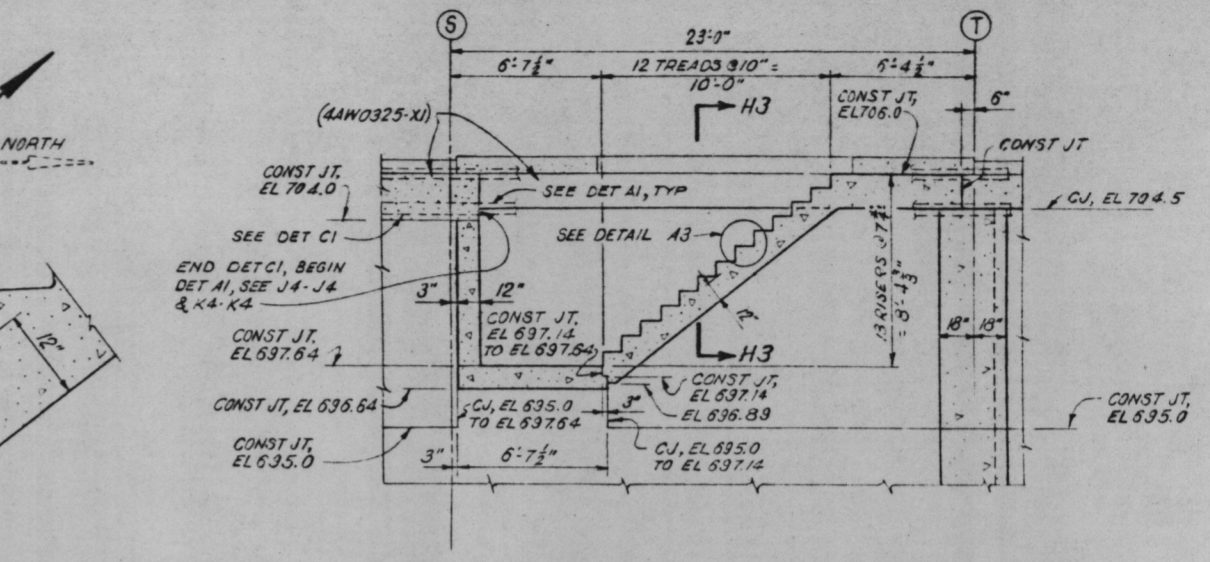
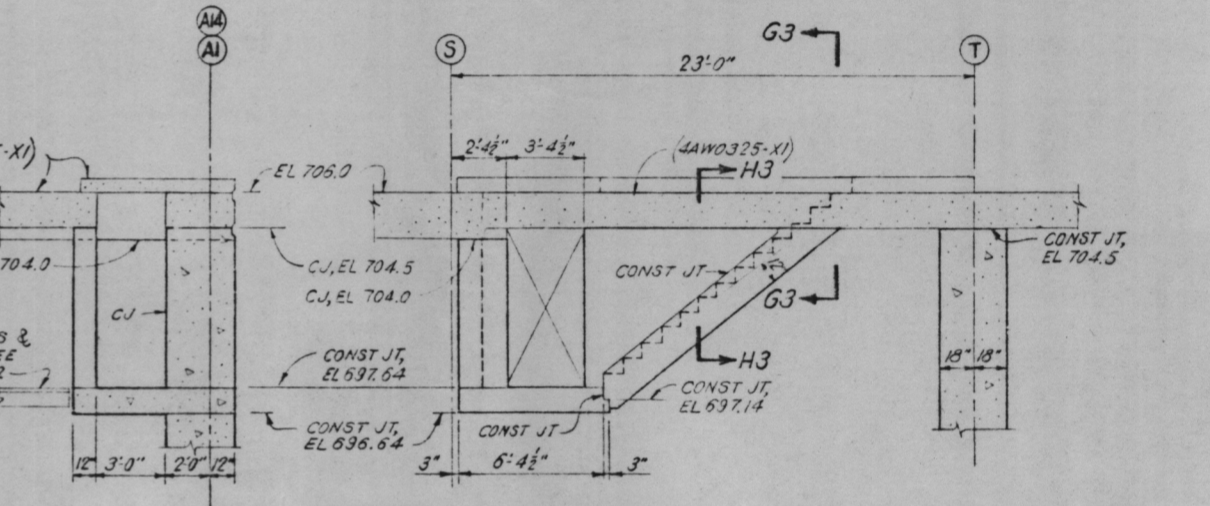


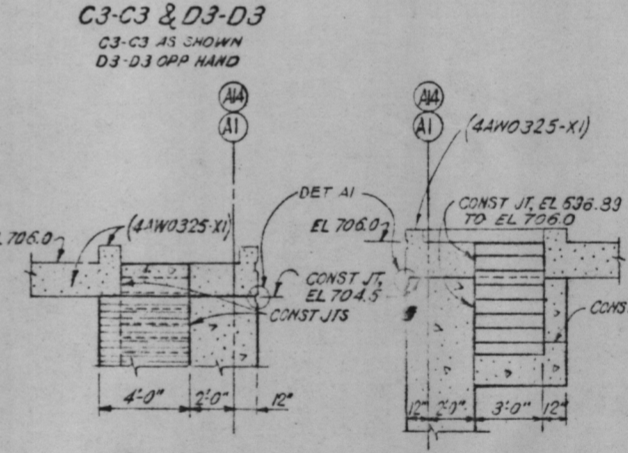
DETAIL A3 SCALE 1/2"



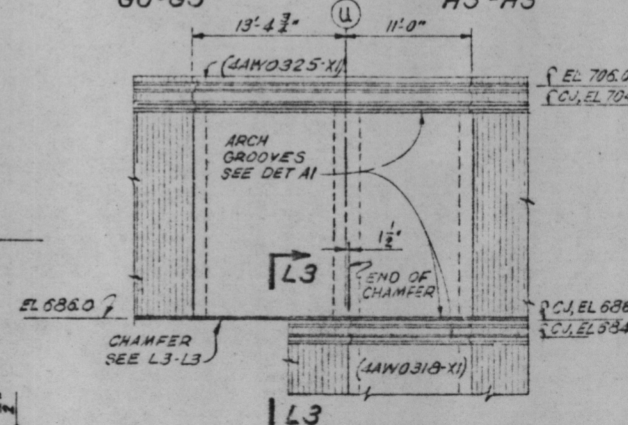
A3-A3 & B3-B3 A3-A3 AS SHOWN B3-B3 OPP HAND



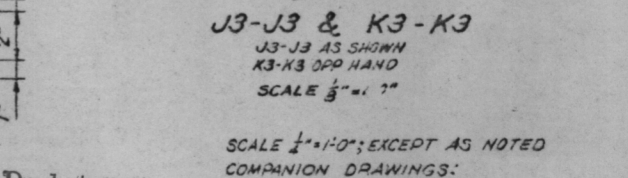
E3-E3 & F3-F3 E3-E3 AS SHOWN F3-F3 OPP HAND



G3-G3 & D3-D3 G3-G3 AS SHOWN D3-D3 OPP HAND



J3-J3 & K3-K3 J3-J3 AS SHOWN K3-K3 OPP HAND SCALE 3/4\"/>



L3-L3 SCALE 3/4\"/>

POOR ORIGINAL

PART PLAN EL 686.0 EXCEPT AS SHOWN SCALE 3/4\"/>

PRC APERTURE CARD

SCALE 1/4\"/>

Docket # 50-438/439  
 Control # 820908002  
 Date 8/23/82 of Document  
 REGULATORY DOCKET FILE

31	SI	REV PER FOR 0-2123, 0-2123, 0-2227, 0-2227, 0-2227, 0-2227
31	SI	REV PER FOR 0-2123, 0-2123, 0-2227, 0-2227, 0-2227, 0-2227
7	SI	REV PER FOR 0-2123, 0-2123, 0-2227, 0-2227, 0-2227, 0-2227
6	SI	REV PER FOR 0-2123, 0-2123, 0-2227, 0-2227, 0-2227, 0-2227
5	SI	REV PER FOR 0-2123, 0-2123, 0-2227, 0-2227, 0-2227, 0-2227
4	SI	REV PER FOR 0-2123, 0-2123, 0-2227, 0-2227, 0-2227, 0-2227
3	SI	REV PER FOR 0-2123, 0-2123, 0-2227, 0-2227, 0-2227, 0-2227
2	SI	REV PER FOR 0-2123, 0-2123, 0-2227, 0-2227, 0-2227, 0-2227
1	SI	REV PER FOR 0-2123, 0-2123, 0-2227, 0-2227, 0-2227, 0-2227
0	SI	REV PER FOR 0-2123, 0-2123, 0-2227, 0-2227, 0-2227, 0-2227

31	SI	REV PER FOR 0-2123, 0-2123, 0-2227, 0-2227, 0-2227, 0-2227
31	SI	REV PER FOR 0-2123, 0-2123, 0-2227, 0-2227, 0-2227, 0-2227
7	SI	REV PER FOR 0-2123, 0-2123, 0-2227, 0-2227, 0-2227, 0-2227
6	SI	REV PER FOR 0-2123, 0-2123, 0-2227, 0-2227, 0-2227, 0-2227
5	SI	REV PER FOR 0-2123, 0-2123, 0-2227, 0-2227, 0-2227, 0-2227
4	SI	REV PER FOR 0-2123, 0-2123, 0-2227, 0-2227, 0-2227, 0-2227
3	SI	REV PER FOR 0-2123, 0-2123, 0-2227, 0-2227, 0-2227, 0-2227
2	SI	REV PER FOR 0-2123, 0-2123, 0-2227, 0-2227, 0-2227, 0-2227
1	SI	REV PER FOR 0-2123, 0-2123, 0-2227, 0-2227, 0-2227, 0-2227
0	SI	REV PER FOR 0-2123, 0-2123, 0-2227, 0-2227, 0-2227, 0-2227

AUXILIARY BUILDING UNITS 1 & 2	
CONCRETE FL SLAB EL 686.0 & WALLS TO EL 704.5 OUTLINE	
BELLEFONTE NUCLEAR PLANT TENNESSEE VALLEY AUTHORITY DIVISION OF ENGINEERING DESIGN	
SUBMITTED	RECOMMENDED
Charles Cole	Richard R. Cole
DATE 8/23/82	APPROVED
KNOXVILLE 1-10-77	33 c 4AW0322-XI-3 R9

8209080012