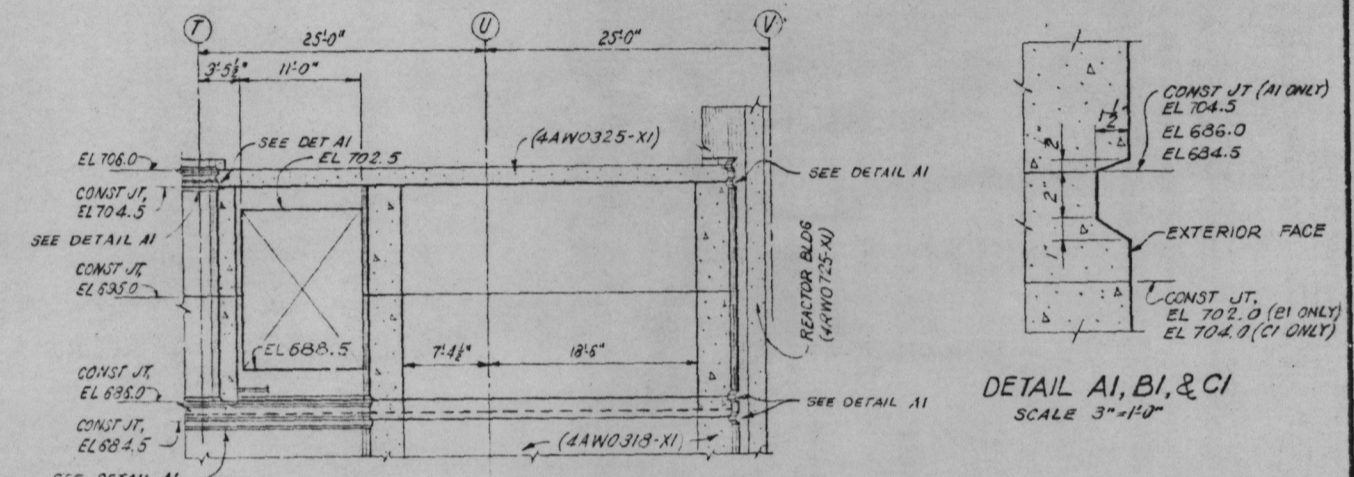
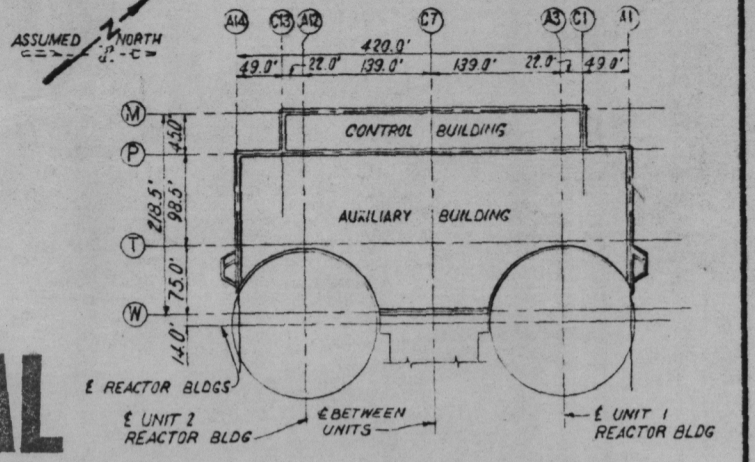
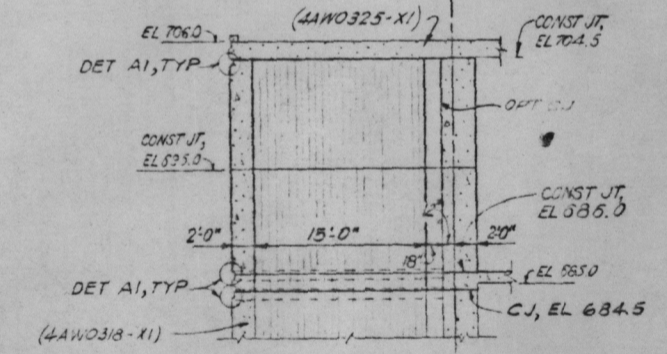


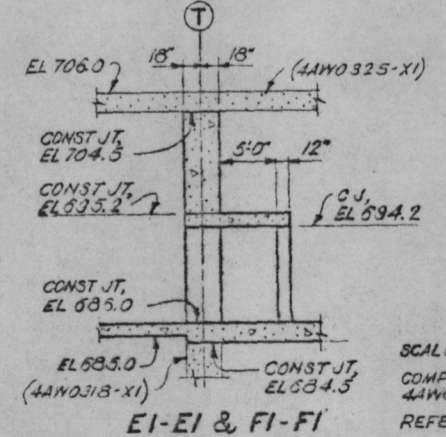
POOR ORIGINAL



AI-AI & BI-BI
AI-AI AS SHOWN
BI-BI OPPOSITE



CI-CI & DI-DI
CI-CI AS SHOWN
DI-DI OPPOSITE



EI-EI & FI-FI
EI-EI AS SHOWN
FI-FI OPPOSITE

- NOTES:
- FOR GENERAL NOTES, SEE 18N0700-XI-1.
 - THE AUXILIARY BUILDING IS A CATEGORY I STRUCTURE AND QUALITY ASSURANCE IS REQUIRED.
 - A MINIMUM OF 3 DAYS IS REQUIRED BETWEEN ADJACENT POURS. FORMS SHALL REMAIN IN PLACE UNDER EACH POUR UNTIL THE CONCRETE IN THAT POUR AND THE ADJOINING POUR HAS ATTAINED A COMPRESSIVE STRENGTH OF 2000 PSI.
 - FLOORS ARE TO HAVE A STEEL TROWELED MCVOLTING FINISH. SEE CONSTRUCTION SPECIFICATION G-22.
 - CONCRETE SHALL BE CLASS 301.5 AFW FOR WALLS, CLASS 301.5 AFW FOR SLABS, AND CLASS 401.5 AFW FOR COLUMNS.
 - FOR EMBEDDED PARTS, PIPES, AND CONDUITS, SEE STRUCTURAL STEEL, MECHANICAL, AND ELECTRICAL DRAWINGS.
 - FOR EQUIPMENT BAYS AND FOUNDATIONS, SEE 4AW0334-XI.
 - FOR SPECIAL TREATMENT OF SLABS AND WALLS REQUIRING PROTECTIVE PAINT FOR DECONTAMINATION, SEE ARCHITECTURAL DRAWINGS.
 - WHEN DRILLING TO ANCHOR SUPPORTS IN THE SLAB, NOT MORE THAN ONE REINFORCING BAR PER SUPPORT SHALL BE CUT FOR 12" THICK SLABS AND NOT MORE THAN TWO REINFORCING BARS PER SUPPORT SHALL BE CUT FOR SLABS GREATER THAN 12" THICK. IN WALLS, DO NOT CUT MORE THAN TWO REINFORCING BARS PER SUPPORT. NO REBAR SHALL BE CUT IN THE MAIN STEEL WALK FROM A WITHOUT EN DES APPROVAL.
 - WHERE CONCRETE IS POURED AGAINST EXPANSION JOINT MATERIAL, THE RATE OF POUR SHALL NOT EXCEED 3 FT. PER HOUR.

51	SI	17-5-77	REV DIM IN BAY 18-180	REV CLASS CONC PER FOR 0-127
41	SI	11-4-77	ADD OPT CJ FOR 0-775	
31	SI	7-11-77	REV TO ADD HANGINGS, ADDED SECTION 05-054-0003 & 0-727	
21	SI	7-11-77	MINOR REVISION, TOWER HANG DEPENDS	
11	SI	31-297-2-77	MOVED DOOR & INCREASED SIZE OF OPENING & MINOR REV.	

AUXILIARY BUILDING
UNITS 1 & 2

CONCRETE
FL SLAB EL 686.0 & WALLS TO EL 704.5
OUTLINE

BELLEVILLE NUCLEAR PLANT
TENNESSEE VALLEY AUTHORITY
DIVISION OF ENGINEERING DESIGN

SUBMITTED: Carl E. Cohen
RECOMMENDED: [Signature]
APPROVED: [Signature]

KNOXVILLE 1-10-77 88 C 4AW0322-XI-1 R9

Docket # 50-438/439
Control # 8209080009
Date 8/23/82 of Document
REGULATORY DOCKET FILE

SCALE 1/4"=1'-0"; EXCEPT AS NOTED
COMPARISON DRAWINGS:
4AW0322-XI-2, 3, 4, 5
REFERENCE DRAWINGS:
4AW0322-XI-1, BILL OF MATERIAL.

PRC
APERTURE
CARD

8209080009

PRINTS REQUIRED

ME	1	1
CE	1	1
CD	1	1
CO	1	1
CS	1	1
CU	1	1
CV	1	1
CA	1	1

REV PER FOR 0-1183, 0-2247 0-2212

ADD NOTE BY PER FOR 0-2238

REV NOTE 9 PER FOR 0-1247; ADD CALL OUT TO PART PLAN EL 686.0

REV PER FOR 0-1480 0-1538 8 1536; REV C.J.'S PART PLAN-EL 686.0

PART PLAN - EL 686.0
EXCEPT AS SHOWN

CONCRETE CLASS 300.75 AFW MAY BE USED FOR THE SLAB IN THIS AREA.