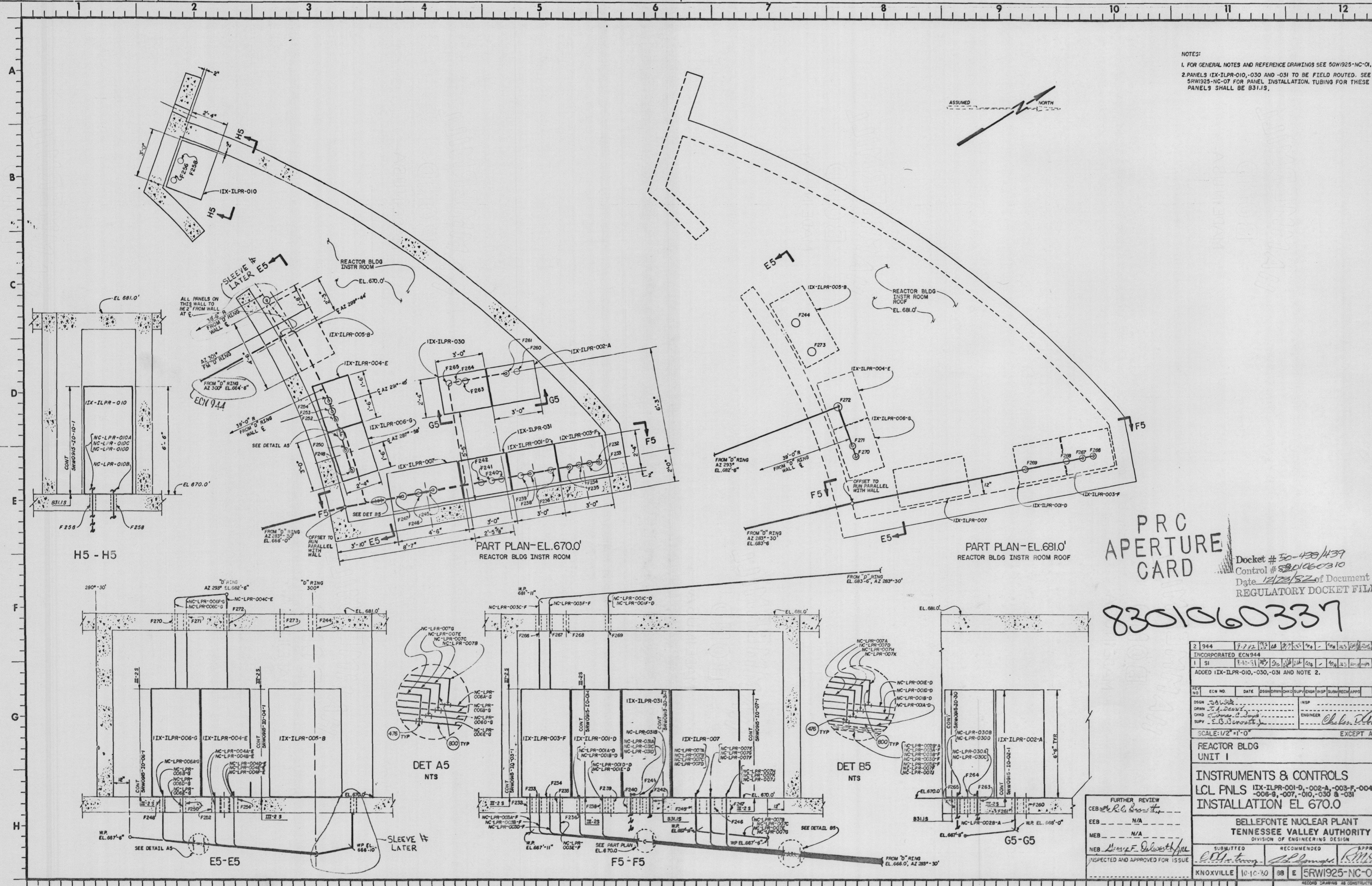


NOTES:  
 1. FOR GENERAL NOTES AND REFERENCE DRAWINGS SEE 5GW1925-NC-01.  
 2. PANELS IIX-ILPR-010, -030 AND -031 TO BE FIELD ROUTED. SEE 5RW1925-NC-07 FOR PANEL INSTALLATION. TUBING FOR THESE PANELS SHALL BE B31.15.



PRC  
 APERTURE  
 CARD

Docket # 50-438/439  
 Control # 8301060310  
 Date 12/28/82 of Document  
 REGULATORY DOCKET FILE

8301060337

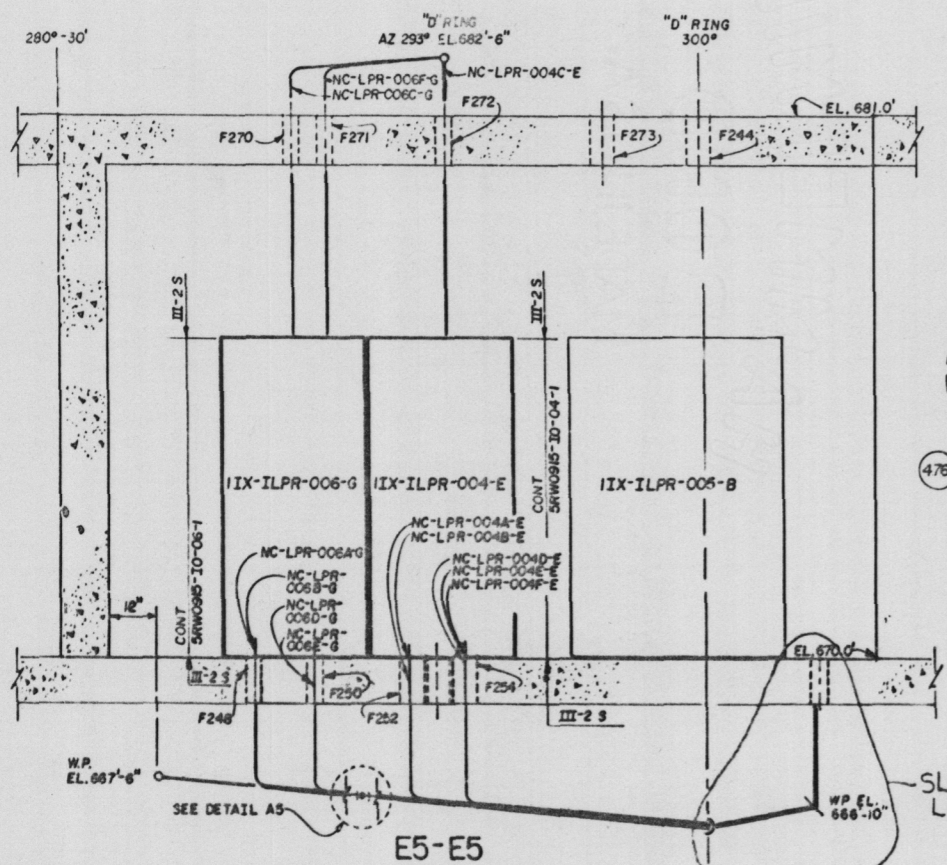
2	944	7-7-82	100	100	100	100	100	100	100	100	100
INCORPORATED ECN 944											
1	SI	7-10-81	100	100	100	100	100	100	100	100	100
ADDED IIX-ILPR-010, -030, -031 AND NOTE 2.											
REV	NO	ECN NO.	DATE	DESIGNED	CHECKED	SUPV	ENGR	INSP	INSTR	APPD	APPRO
DESIGN	SAW										
DRAWN	J. A. Davis										
CHECKED	J. A. Davis										
SUPV	E. B. Swartz										
SCALE: 1/2" = 1'-0"											
EXCEPT AS NOTED											

REACTOR BLDG  
 INSTRUMENTS & CONTROLS  
 UNIT 1  
 LCL PNLS IIX-ILPR-001-D, -002-A, -003-F, -004-E, -006-G, -007, -010, -030 & -031  
 INSTALLATION EL. 670.0

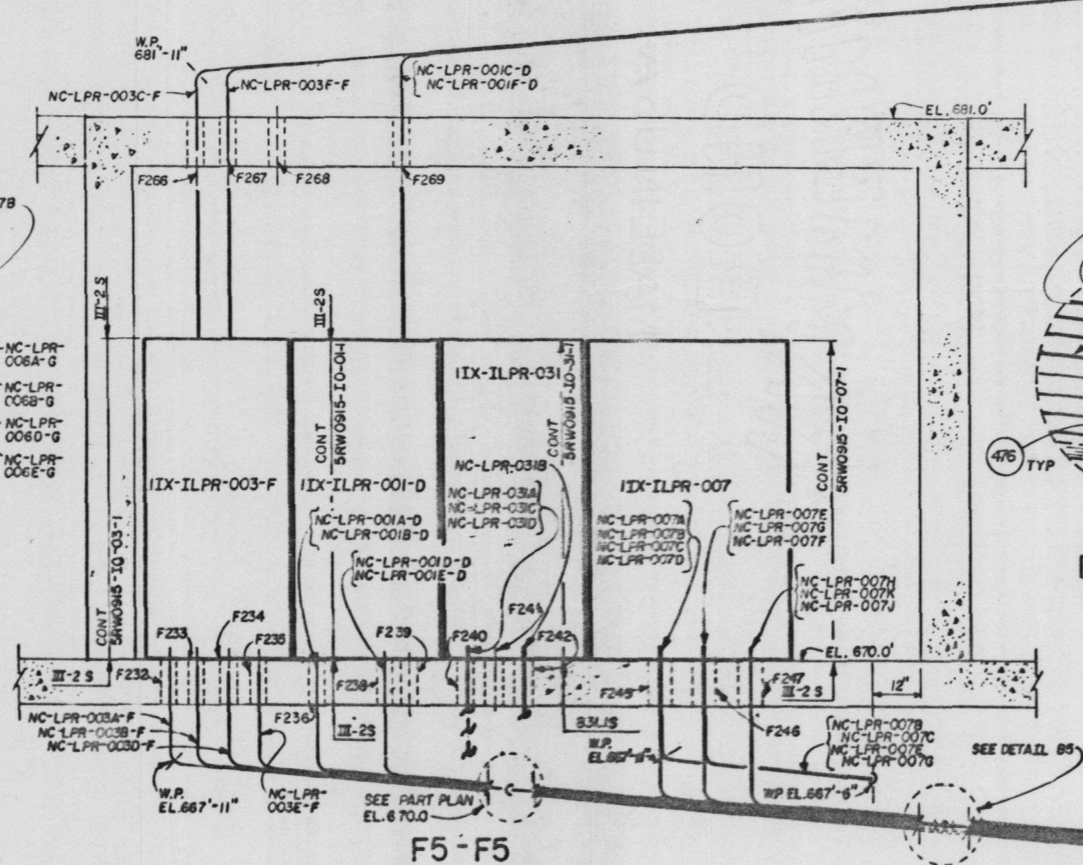
FURTHER REVIEW  
 CEB R. L. ...  
 EEB ...  
 MEB ...  
 NEB ...  
 INSPECTED AND APPROVED FOR ISSUE

BELLEVILLE NUCLEAR PLANT  
 TENNESSEE VALLEY AUTHORITY  
 DIVISION OF ENGINEERING DESIGN  
 SUBMITTED RECOMMENDED APPROVED  
 KNOXVILLE 10-10-80 88 E SRW1925-NC-05 R2

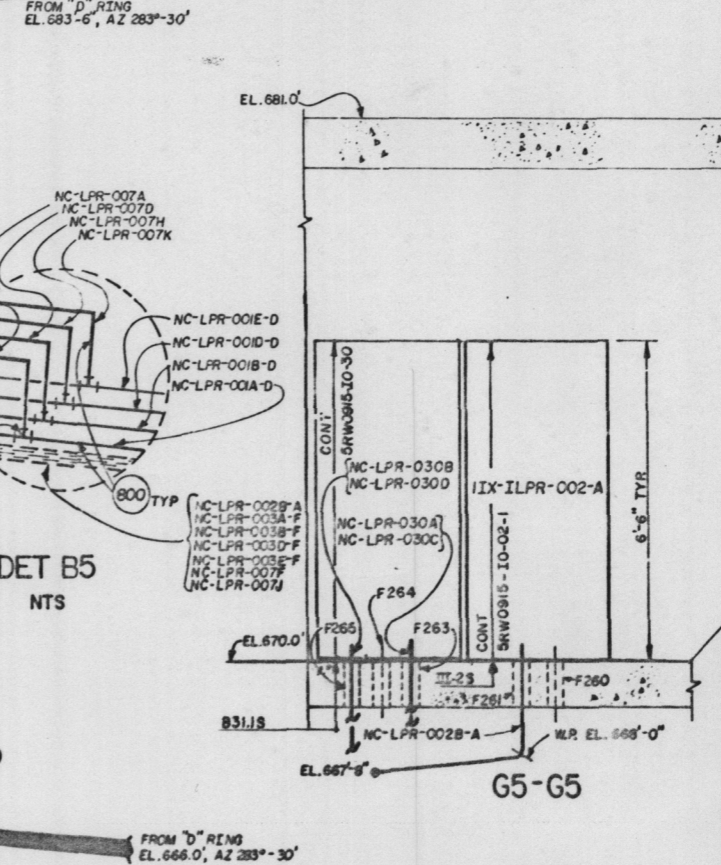
H5 - H5



DET A5  
 NTS



DET B5  
 NTS



G5 - G5