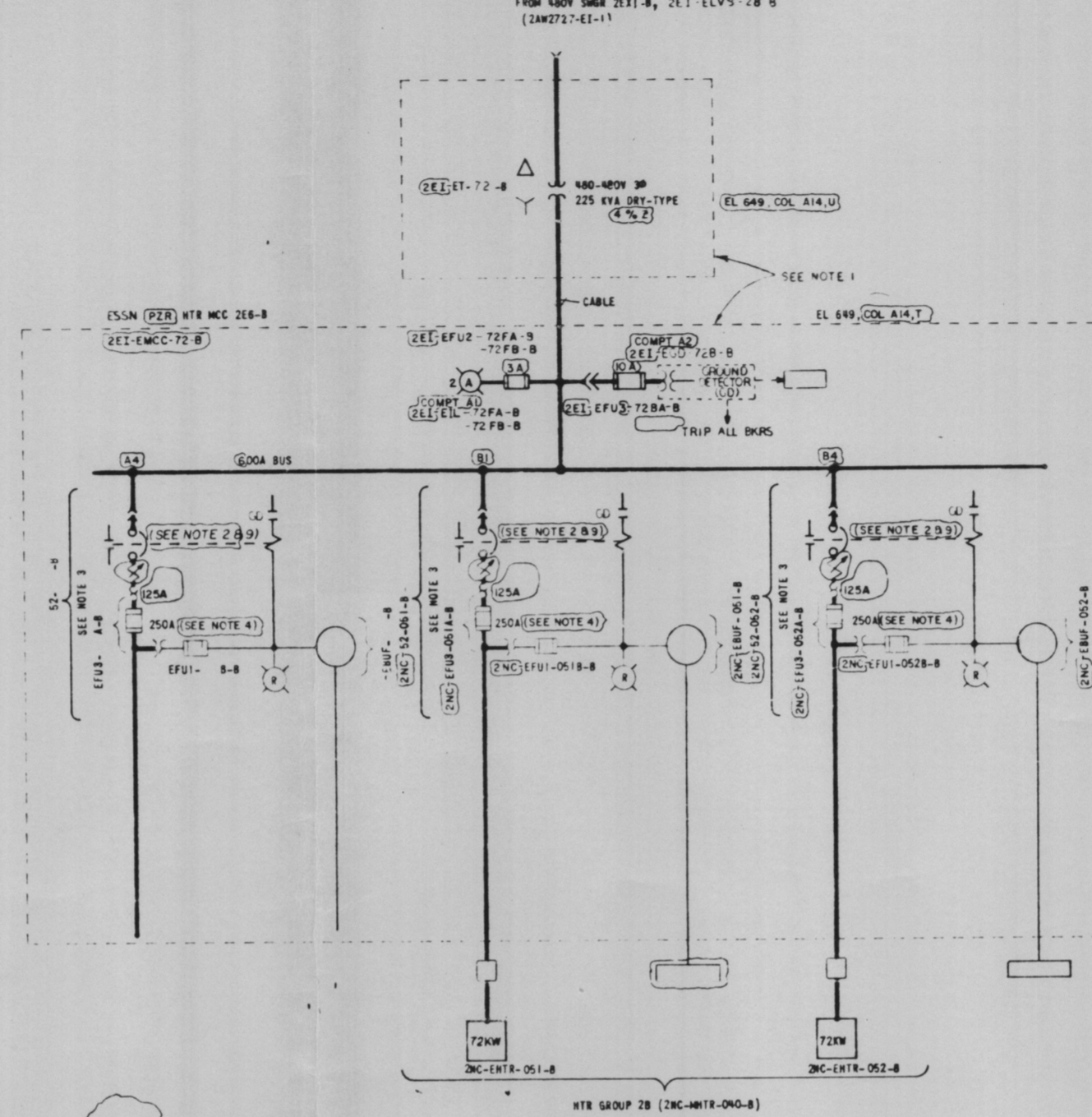
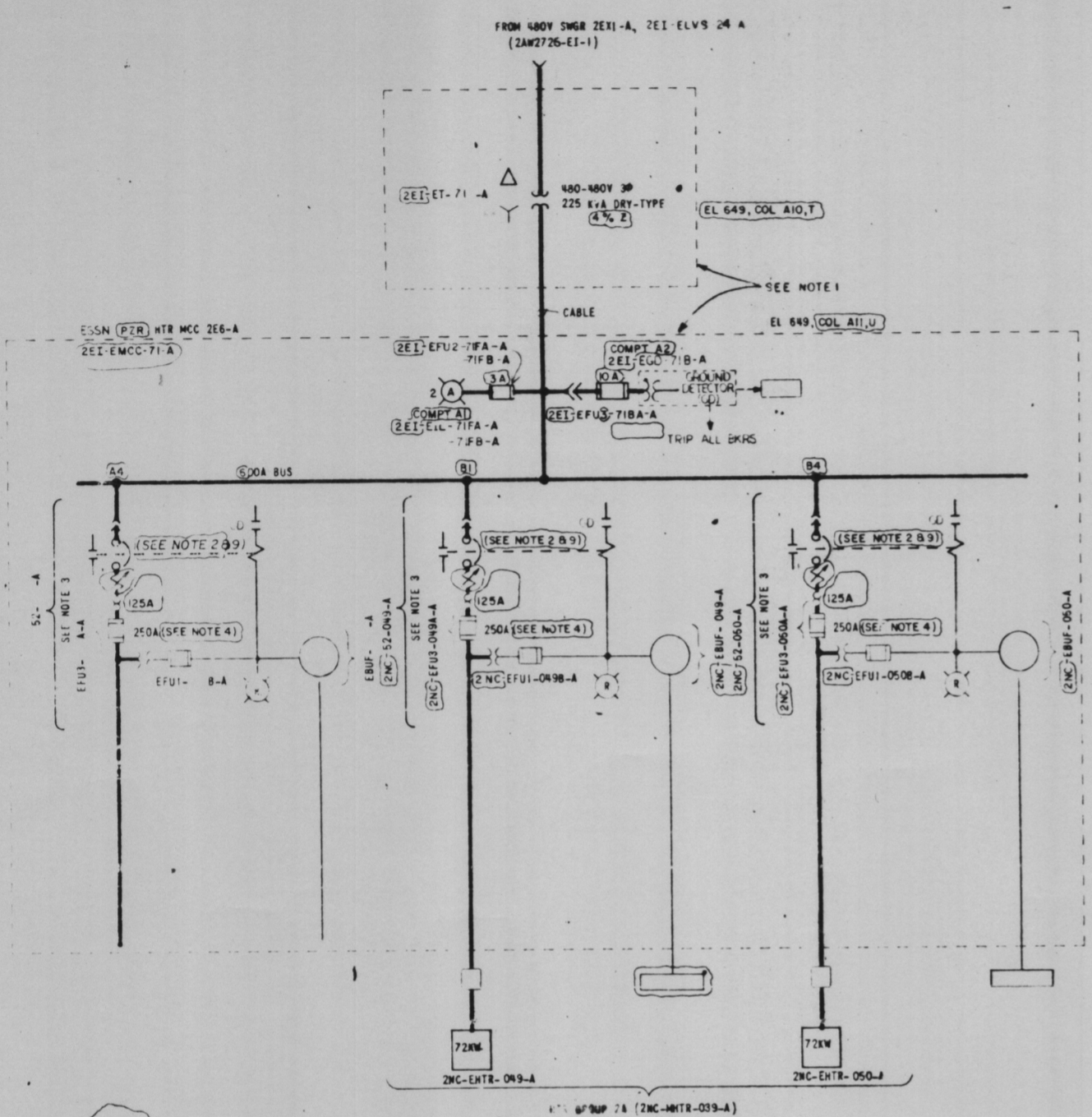
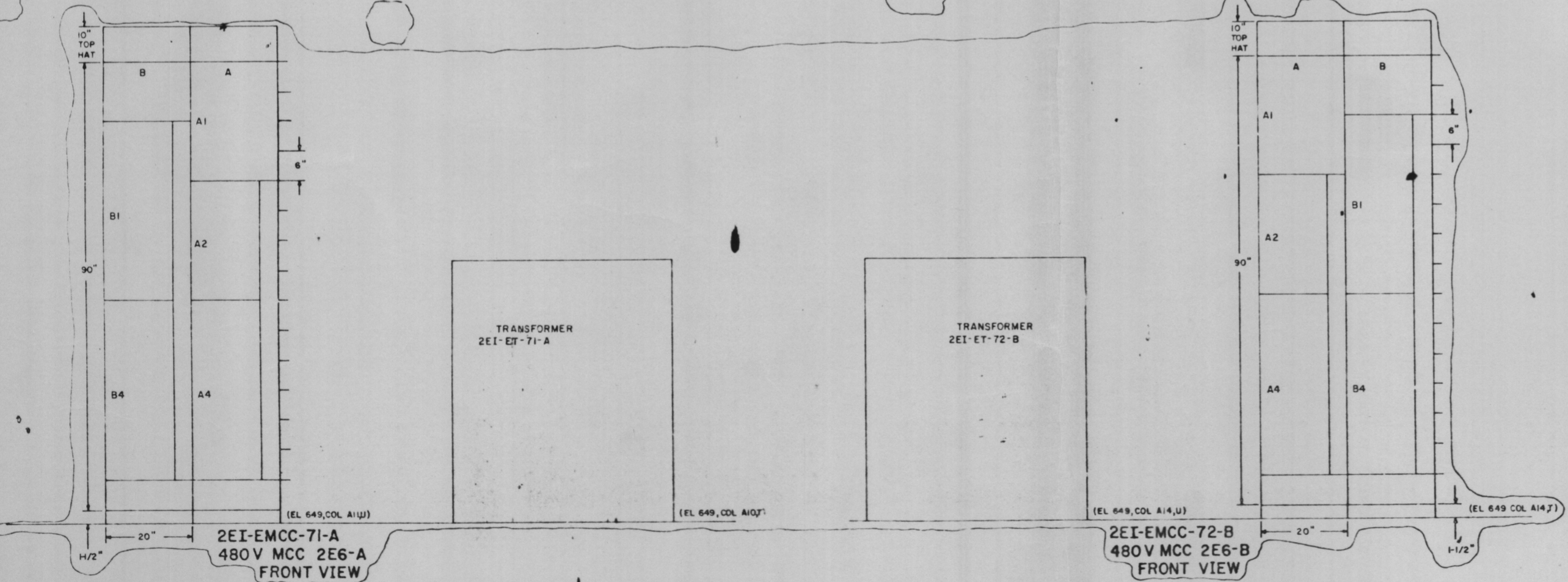


REFERENCE DWGS	
200720-PP-1	PLANT MCC BUS PWS SYS SINGLE LINE
200720-PP-2	ITS SCHEMATICS REACTOR COOLING SYS
200720-PP-3	FUNCTIONAL CONT & LOGIC DIAG, REAC. COOL. SYS.
5007047-PP	MCC COMPARTMENT TYPICAL SCHEMATICS
5007047-PP	1E6-A MCC COMPUTERIZED CIRCUIT SCHEDULE
5007047-PP	1E6-B MCC COMPUTERIZED CIRCUIT SCHEDULE

- NOTES:
1. 480V MCC PROVIDED ON TVA CONTRACT 76K5-06242 BY GOULD-ITE. 480-480V ISOLATION TRANSFORMERS PROVIDED ON TVA CONTRACT 76K3-05681 BY ENGINEERING MAGNETICS.
  2. ALL MOLDED CASE CIRCUIT BREAKERS ARE 3-POLE, 600V, THERMAL-MAGNETIC AND HAVE AN INTERRUPTING RATING OF NOT LESS THAN 25,000 RMS SYMMETRICAL AMPS, AT 480V. ALL MCC T/M BREAKERS ARE 400A FRAME WITH SHUNT TRIP, JL SERIES. THE SHUNT TRIP COIL IS CAPABLE OF OPERATING AT 55% RATED VOLTAGE. A N.O. AUXILIARY CONTACT IS PROVIDED ON THE BREAKER TO DISCONNECT THE SHUNT TRIP COIL VOLTAGE WHEN THE BREAKER IS OPEN.
  3. FUSES IN THE POWER CIRCUITS ARE GOULD/SHAWMUT CLASS J CURRENT LIMITING FUSES ARE REQUIRED TO PROVIDE REDUNDANT PROTECTION FOR PRIMARY CONTAINMENT PENETRATIONS.
  4. ALL CONTROL TRANSFORMERS ARE 1Ø, 480-120V, 350VA, WITH GROUNDED SECONDARY. ALL CONTROL TRANSFORMER SECONDARY FUSES ARE 3.5A GOULD/SHAWMUT TRIM DUAL-ELEMENT, TIME DELAY.
  5. 3A FUSES IN THE INCOMING LINE LAMP CIRCUIT & 10A FUSES IN THE GROUND DETECTOR CIRCUIT ARE GOULD/SHAWMUT, AMPTRAP FORM 600 MIDGET TYPE 2.
  6. ALL AUXILIARY RELAYS ARE ITE J10 UNLESS OTHERWISE NOTED.
  7. MCC ARRANGEMENT IS CONTROLLED BY THE FRONT VIEW LOCATED ON THIS DRAWING.
  8. COMPARTMENT SCHEMATICS & WIRING DIAGRAMS ARE CONTROLLED BY THE APPLICABLE REFERENCE DRAWING IN THE MCC COMPUTERIZED CIRCUIT SCHEDULE.
  9. CIRCUIT BREAKER SETTINGS ARE CONTROLLED BY THE MCC COMPUTERIZED CIRCUIT SCHEDULE.
  10. THESE MOTOR CONTROL CENTERS & ISOLATION TRANSFORMERS ARE CLASS 1E.



- SYMBOLS & ABBREVIATIONS:
- - INTERFACE FOR STATUS, ENVIRONMENTAL, AND ALARM MONITORING SYS (SEAS)
  - - PRIMARY CONTAINMENT PENETRATION
  - ⊗ - INDICATING LIGHT, R = RED, A = AMBER
  - GD - GROUND DETECTOR



**PRC APERTURE CARD**

Docket # 30-438  
Control # 8301280074  
Date 1/19/83 of Document  
REGULATORY DOCKET FILE  
DWC REQUIRED PER TVA ECN 21

8301280083

REV NO.	ECN NO.	DATE	ISSUED BY	CHKD BY	APPV BY	APPV DATE
3	SI	11-2-75	ETM	SM	DA	11/2/75
2	SI	4-2-76	ENR	ENR	ENR	4/2/76
1	SI	1-8-75	ETM	SM	DA	1/8/75

AUXILIARY BUILDING UNIT 2  
SINGLE LINE  
480V ESSN (PZR) HTR MCC 2E6-A & 2E6-B  
2EI-EMCC-71-A & 2EI-EMCC-72-B  
BELLEFONTE NUCLEAR PLANT  
TENNESSEE VALLEY AUTHORITY  
DIVISION OF ENGINEERING DESIGN

INSPECTED AND APPROVED FOR ISSUE  
DESIGN PROJECT MANAGER  
SUBMITTED: C.T. Garner  
RECOMMENDED: J.L. Berger  
APPROVED: R.M. Hodge  
KNOXVILLE 12-2-83 88 E SAW2738-EI-1 23  
RECORD DRAWING AS CONSTRUCTED

PRINTS REC'D

NO.	DATE	BY
ME		
CE		
AD		
CD		
MD		
SD		
LD		
PA		