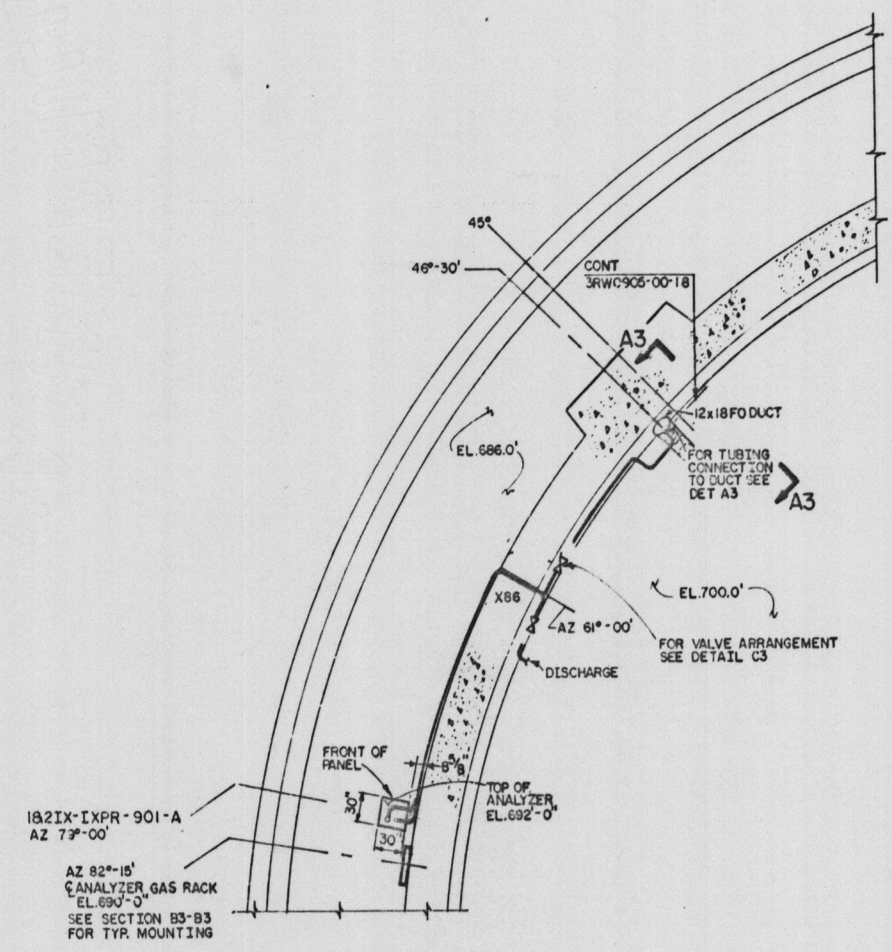
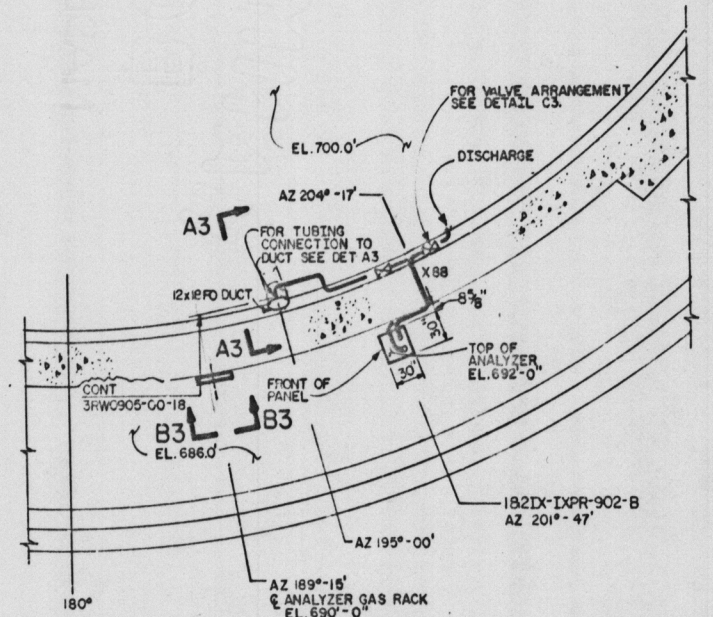


KEY PLAN NOT TO SCALE

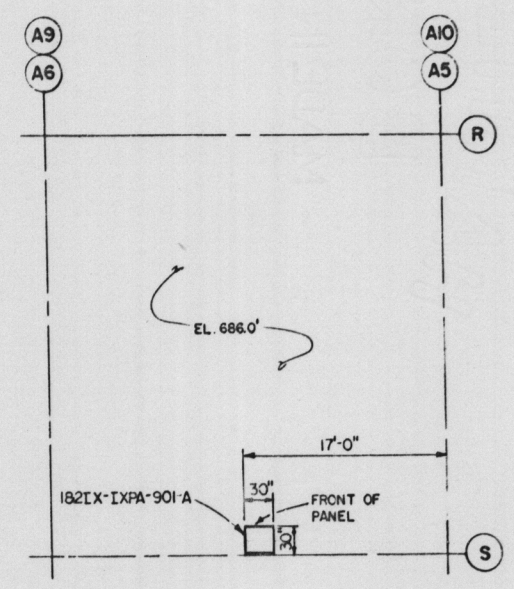
- GENERAL NOTES:
1. 315, 311 INDICATES INSTRUMENT IMPLUSE LINE CLASSIFICATION (SAME AS PIPING CLASSIFICATION AS SHOWN PER TVA DRAWING 38W0021-00-01)
 2. ALL LINES ARE 3/8" O.D. WALL, 304 STAINLESS STEEL TUBING, MARK NO. 900, EXCEPT WHERE NOTED.
 3. ROUTING SHOWN DIAGRAMMATICALLY; FIELD TO DETERMINE EXACT ROUTING. LINES TO BE SLOPED A MINIMUM OF 1/8" PER FOOT AND WHERE LOW POINTS EXIST A DRAIN OR CONDENSATE POT SHALL BE USED.
 4. EXPANSION BOLT ANCHORS USED FOR MOUNTING GAS RACKS SHALL BE IN ACCORDANCE WITH TABLE 1.9 II OF CIVIL DESIGN STANDARD DS-08.1 AND SHALL BE SELF-DRILLING, PHILLIPS RED HEAD OR EQUAL.
 5. EXPANSION SHELL ANCHORS SHALL BE CERTIFIED TO QUALITY LEVEL II, BY TESTING IN CONFORMANCE WITH TVA CONSTRUCTION SPECIFICATION G32.
 6. WHEN MOUNTING GAS RACKS TO EMBEDDED CONCRETE INSERTS, ALL 1/2" O.D. AND LARGER CONNECTION BOLTS SHALL BE TIGHTENED BY A MINIMUM TORQUE LOAD OF 50 FT-LB OR UNTIL A DISTINCT YIELDING OF THE LIP IS DETECTED BY DECREASED RESISTANCE TO THE APPLIED TORQUE.
 7. WHEN MOUNTING ANALYZERS TO STEEL, NELSON ELECTRIC ARC WELDED STUDS OR EQUAL SHALL BE USED.
 8. BOLT OR STUD SIZES TO BE 1/2" UNLESS OTHERWISE NOTED.



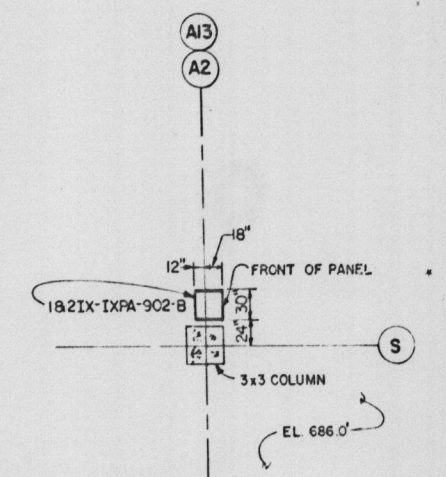
PART PLAN-EL.686.0' UNIT 1 SHOWN-UNIT 2 OPP HAND SCALE: 1/8" = 1'-0"



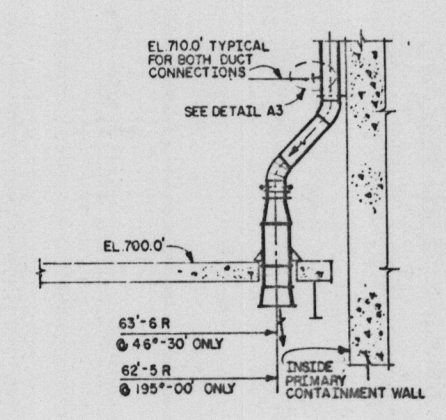
PART PLAN-EL.686.0' UNIT 1 SHOWN-UNIT 2 OPP HAND SCALE: 1/8" = 1'-0"



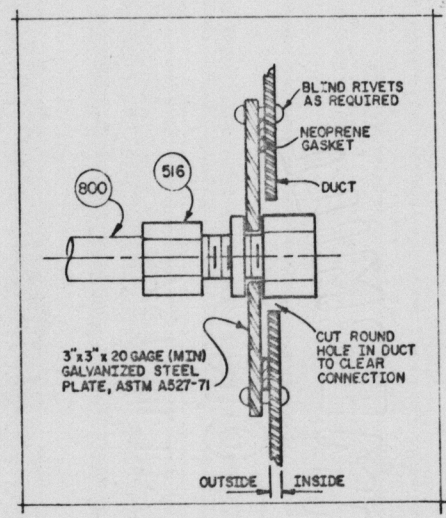
PART PLAN-EL.686.0' UNIT 1 SHOWN-UNIT 2 OPP HAND SCALE: 1/8" = 1'-0"



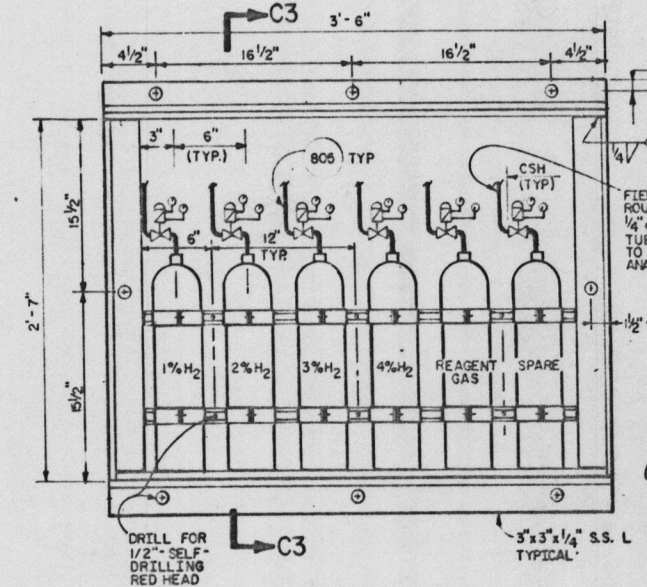
PART PLAN-EL.686.0' UNIT 1 SHOWN-UNIT 2 OPP HAND SCALE: 1/8" = 1'-0"



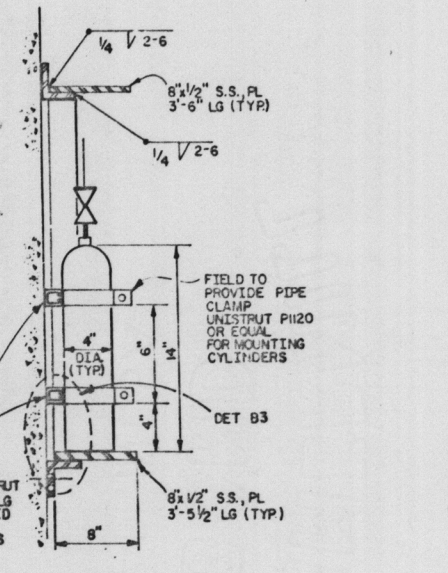
A3-A3 HYDROGEN RECIRCULATOR DUCTWORK UNIT 1 SHOWN-UNIT 2 OPP HAND SCALE: 3/16" = 1'-0"



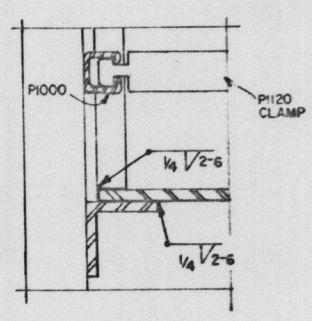
DET A3 MATERIAL FABRICATION AND INSTALLATION BY FIELD CODE CLASS TO THAT OF PROCESS NTS



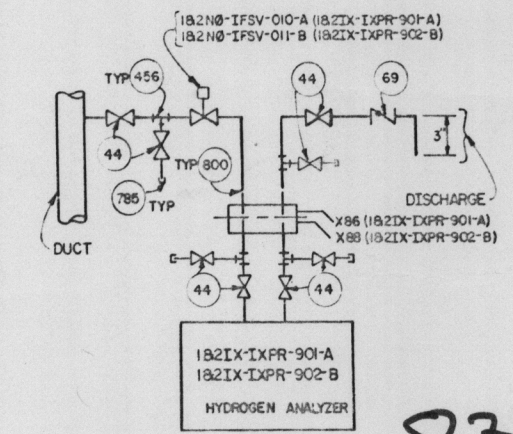
B3-B3 HYDROGEN ANALYZER GAS RACK SCALE: 1/8" = 0'-1"



C3-C3



DET B3 NTS



DET C3 TYPICAL VALVE ARRANGEMENT NTS

PRC APERTURE CARD

8301060402

Docket # 30-1-30/1129 Control # 800-1000-310 Date 12/23/82 of Document REGULATORY DOCKET FILE

FURTHER REVIEW	
EEB	N/A
CEB	<i>[Signature]</i>
MEB	N/A
NEB	N/A
INSPECTED AND APPROVED FOR ISSUE	

REV NO.	ECN NO.	DATE	ISSUED BY	CHKD BY	SUPV ENGR	DESIGNER	APPV
1							
SCALE: AS SHOWN EXCEPT AS NOTED							
POWERHOUSE, UNITS 1 & 2							
I & C HYDROGEN ANALYZER PANELS							
182IX-IXPR-901-A & -902-B							
182IX-IXPA-901-A & -902-B							
INSTALLATION EL. 686.0'							
BELLEFONTE NUCLEAR PLANT							
TENNESSEE VALLEY AUTHORITY							
DIVISION OF ENGINEERING DESIGN							
SUBMITTED		RECOMMENDED		APPROVED			
<i>[Signature]</i>		<i>[Signature]</i>		<i>[Signature]</i>			
KNOXVILLE 1-1-71 88 E 56W0911-10-03							