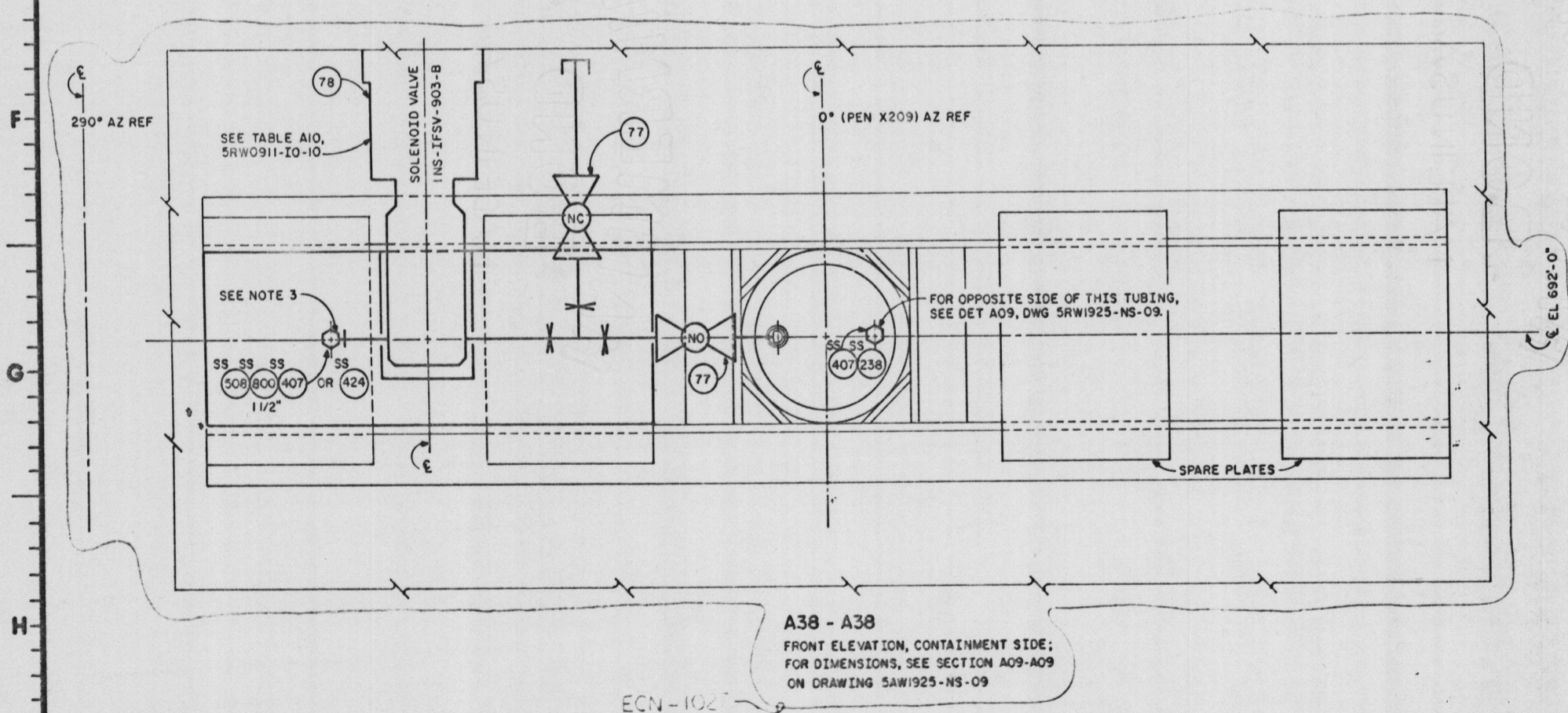


KEY PLAN
EL. 700'-0"
SCALE: 1/8" = 1'-0"

- NOTES:
1. FOR GENERAL NOTES & REFERENCE DRAWINGS, SEE 5AW1925-NC-01 & SRW1925-NS-09
 2. SEE NOTE 2, DRAWING 5RW1925-NS-09
 3. FOR SOLENOID VALVE STATION CONFIGURATION AND FITTINGS, SEE SRW0911-IO-10

- REFERENCE DRAWINGS:
- 5RW0911-IO-01 I & C PLANS
 - 5RW0915-IO-38 I & C LOCAL PANEL DRAWING
 - 5RW1925-NS-09 I & C LOCAL PANELS IIX-ILPR-009-D & 029-A INSTL.
 - 5RW0911-IO-10 I & C ISOL SOL VALVE MTG PLATE DETAILS

PRC APERTURE
Docket # 8301060391
Control # 8301060310
Date 12/23/82 of Document
REGULATORY DOCKET FILE



| 1. | ECN-1027, SI | 6-1-82 | SI | MINOR CHANGES | SI | MINOR CHANGES | SI | MINOR CHANGES | SI | MINOR CHANGES | SI | MINOR CHANGES | SI | MINOR CHANGES |
|--|--------------|--------|------------------|---------------|---------------|---------------|---------------|---------------|---------------|---------------|---------------|---------------|---------------|---------------|
| ECN-1027 INCORPORATED, SI MINOR CHANGES. | | | | | | | | | | | | | | |
| NO. | ECN NO. | DATE | DESCRIPTION | DESIGNED | CHECKED | APP'D | DATE | BY | DATE | BY | DATE | BY | DATE | BY |
| 1 | ECN-1027 | 6-1-82 | SI MINOR CHANGES | SI | MINOR CHANGES | SI | MINOR CHANGES | SI | MINOR CHANGES | SI | MINOR CHANGES | SI | MINOR CHANGES | SI |

| | |
|--|------------------------------|
| SCALE: NONE EXCEPT AS NOTED | |
| REACTOR BUILDING UNIT 1 | |
| INSTRUMENT & CONTROLS LOCAL PANEL IIX-ILPR-038-B INSTALLATION EL. 704'-0" | |
| Bellefonte Nuclear Plant Tennessee Valley Authority DIVISION OF ENGINEERING DESIGN | |
| SUBMITTED INSPECTED AND APPROVED FOR ISSUE KNOXVILLE 6-17-88 88 E 5RW1925-NS-38 RI | RECOMMENDED APPROVED Q |

| | |
|----------------|-----|
| FURTHER REVIEW | |
| CEB | N/A |
| FEB | N/A |
| MEB | N/A |
| NEB | N/A |