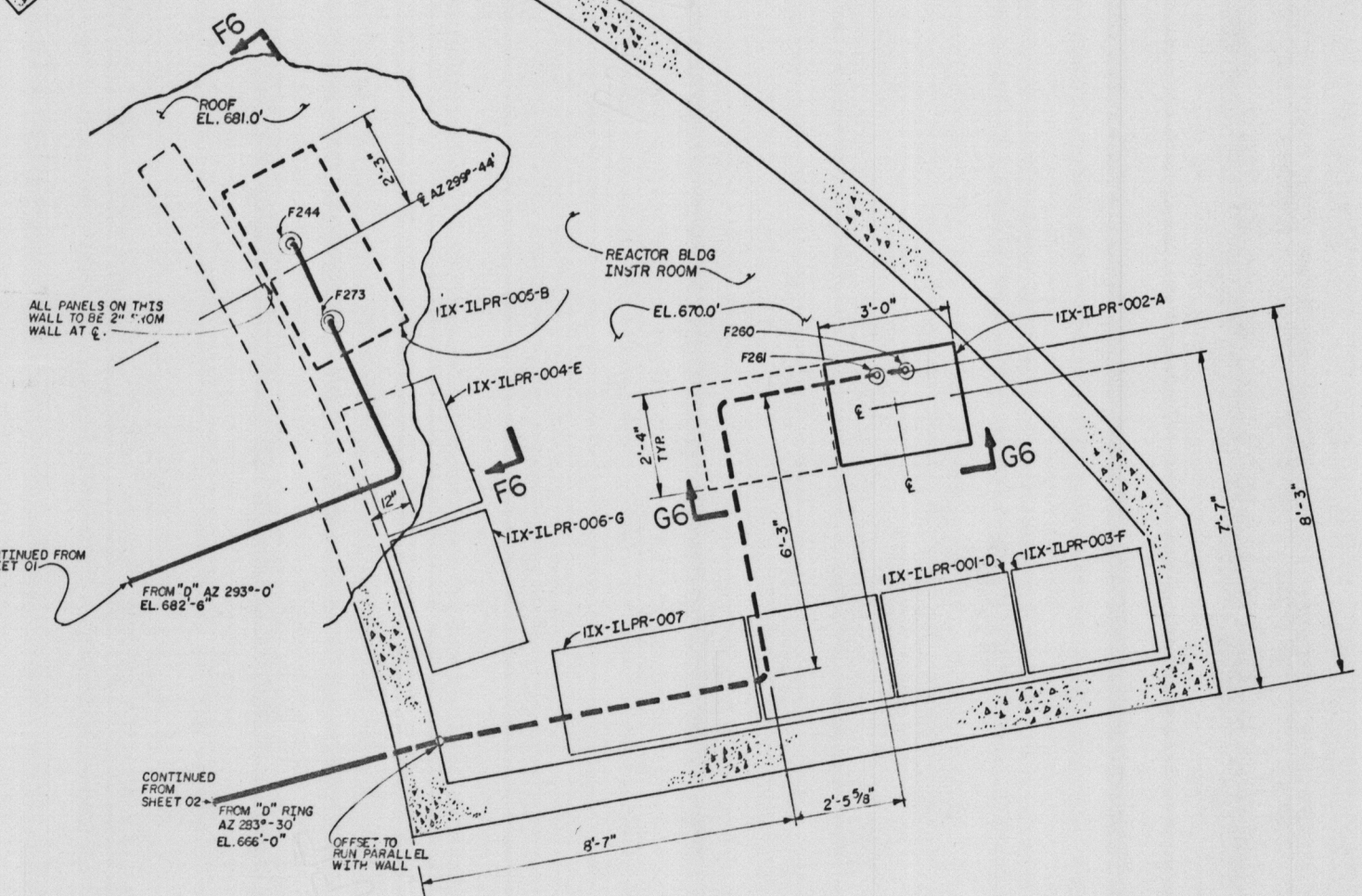


NOTES:
1. FOR GENERAL NOTES AND REFERENCE DRAWINGS SEE 5RW925-NC-01.

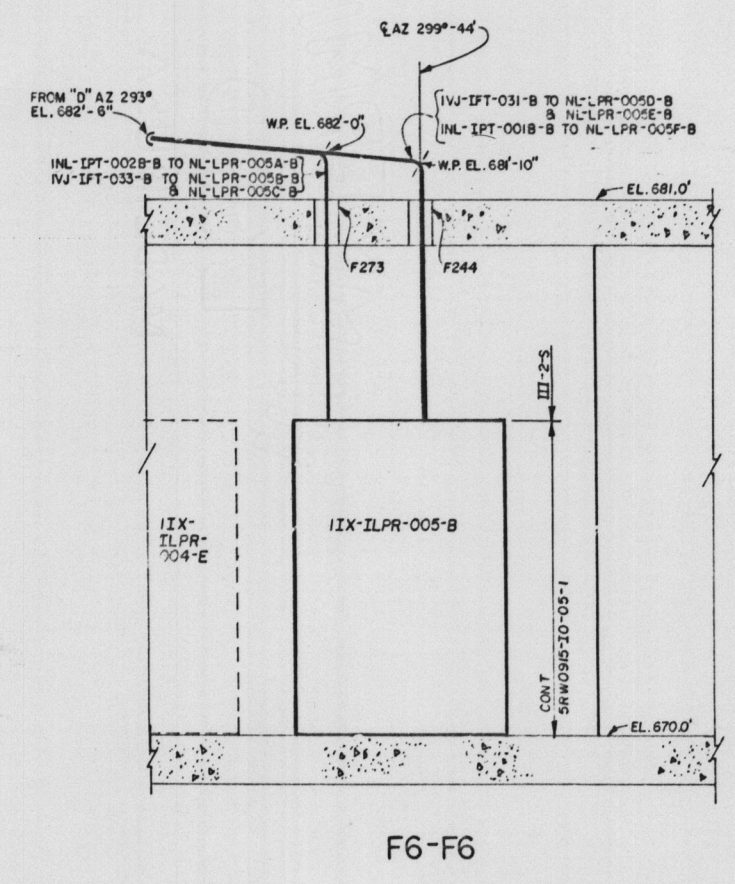


PART PLAN - EL. 670.0'
REACTOR BUILDING INSTRUMENT ROOM

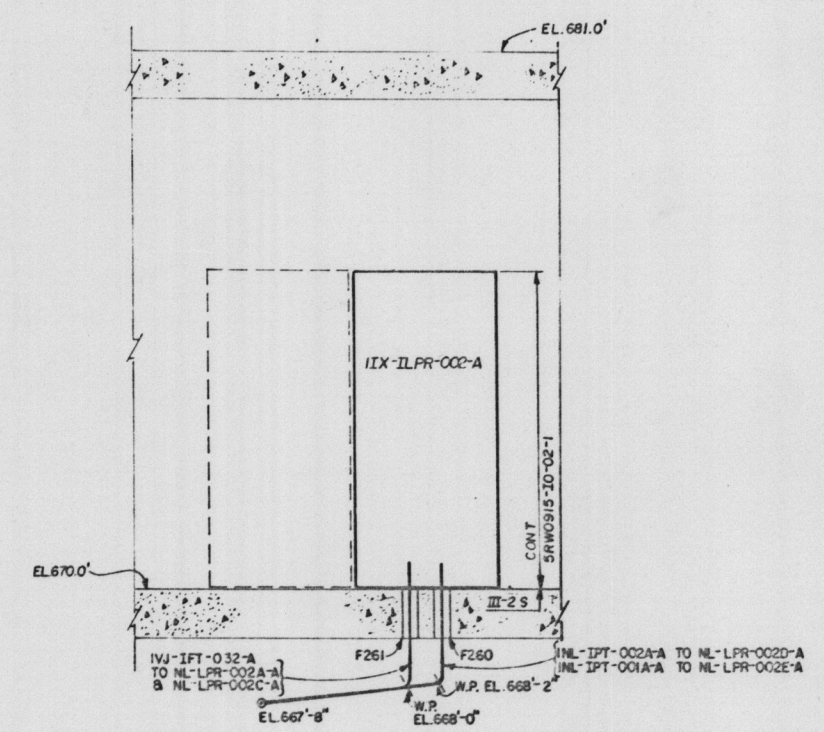
* PANEL UNID	DRAIN LOCATION (AZIMUTH)
IIX-ILPR-002-A	318°-20'
IIX-ILPR-005-B	323°-13'
IIX-ILPR-019-A	99°
IIX-ILPR-020-B	99°
IIX-ILPR-021-A	248°
IIX-ILPR-022-B	240°

TABLE H6

* FOR DRAIN CONNECTION DETAILS, SEE SAWSHII-10-21.



F6-F6



G6-G6

PRC
APERTURE
CARD

Docket # 50-4764139
Control # 8301060310
Date 12/23/59 of Document
REGULATORY DOCKET FILE

8301060386

REV NO	ECN NO	DATE	BY	CHKD	APPD	REASON
0001	50-4764139	12/23/59

REACTOR BLDG
UNIT I
INSTRUMENTS & CONTROLS
LOCAL PNLS IIX-ILPR-002-A & 005-B
INSTALLATION EL. 670.0'

FURTHER REVIEW
CEB ...
EEB N/A
MEB N/A
NEB ...
INSPECTED AND APPROVED FOR ISSUE

BELLEFONTE NUCLEAR PLANT
TENNESSEE VALLEY AUTHORITY
DIVISION OF ENGINEERING DESIGN
SUBMITTED: ...
RECOMMENDED: ...
APPROVED: ...
KNOXVILLE 10-10-60 88 E 5RW925-NL-06

PROJ #
SIZE