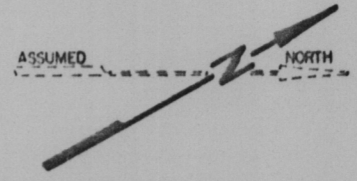
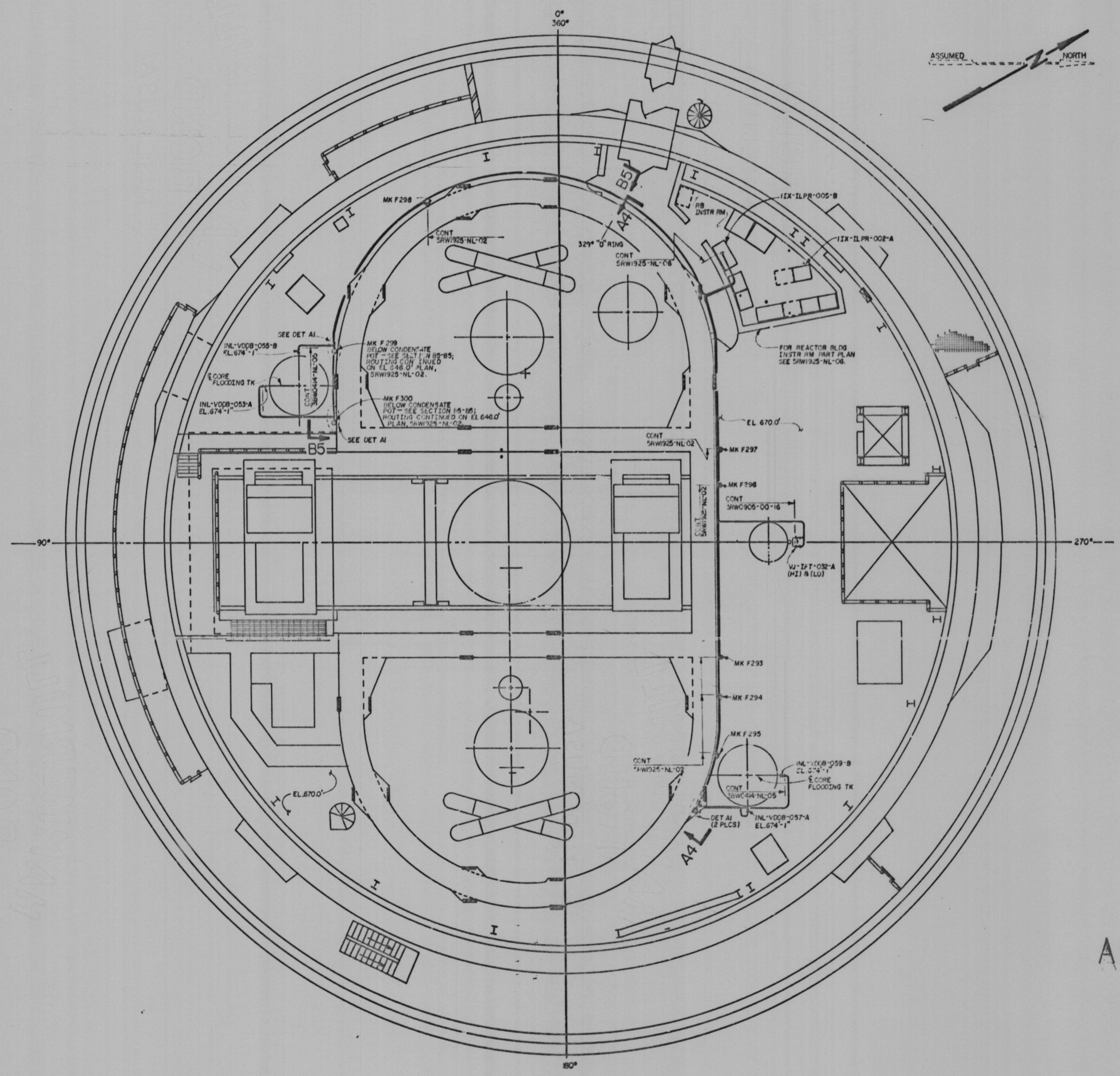
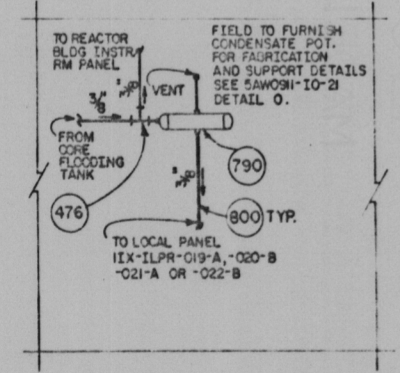


NOTES:
1. FOR GENERAL NOTES AND REFERENCE DRAWINGS SEE 5RW1925-NC-01.
2. WHERE TUBING ROUTING WORKING POINTS MEET, COMMON HANGERS SHALL BE USED IN CONJUNCTION WITH NG, NL & CF SYSTEMS.



- REFERENCE DRAWINGS:
- 5RW1925-NL-SERIES - MECH CORE FLOODING PIPING
 - 5RW1925-NC-SERIES - MECH VENTILATION, PURGE & COOLING SYSTEM
 - 5RW1925-NC-SERIES - I & C LOCAL PANEL INSTALLATION
 - 5RW1925-NC-SERIES - BILL OF MATERIALS
 - 5RW1925-NC-SERIES - I & C PANELS, TYPICAL DETAIL & INSTALLATION
 - 5RW1925-NC-SERIES - INSTRUMENT AND CONTROLS LOCAL PANELS
 - 5RW1925-NC-SERIES - MECH WASTE DISPOSAL SYSTEM



DET A1
CONDENSATE POT
ARRANGEMENT
NTS

PLAN EL. 670.0'

8301060368

Docket # 50-438439
Control # 8301060368
Date 12/23/62 of Document
REGULATORY DOCKET FILE

PRC
APERTURE
CARD

FURTHER REVIEW
CEB *[Signature]*
EEB N/A
MEB N/A
NEB *[Signature]*
INSPECTED AND APPROVED FOR ISSUE

REV NO	ECN NO	DATE	DESIGNED BY	CHECKED BY	APPROVED BY
1					
SCALE: 1/8" = 1'-0" EXCEPT AS NOTED					
REACTOR BUILDING UNIT I					
INSTRUMENTS & CONTROLS LCL PNLs IIX-ILPR-002-A, 005-B, 019-A, 020-B, 021-A & 022-B INSTL EL. 670.0'					
BELLEFONTE NUCLEAR PLANT TENNESSEE VALLEY AUTHORITY					
DIVISION OF ENGINEERING DESIGN					
SUBMITTED			RECOMMENDED		APPROVED
<i>[Signature]</i>			<i>[Signature]</i>		<i>[Signature]</i>
KNOXVILLE 10-10-70			88 E 5RW1925-NL-01		