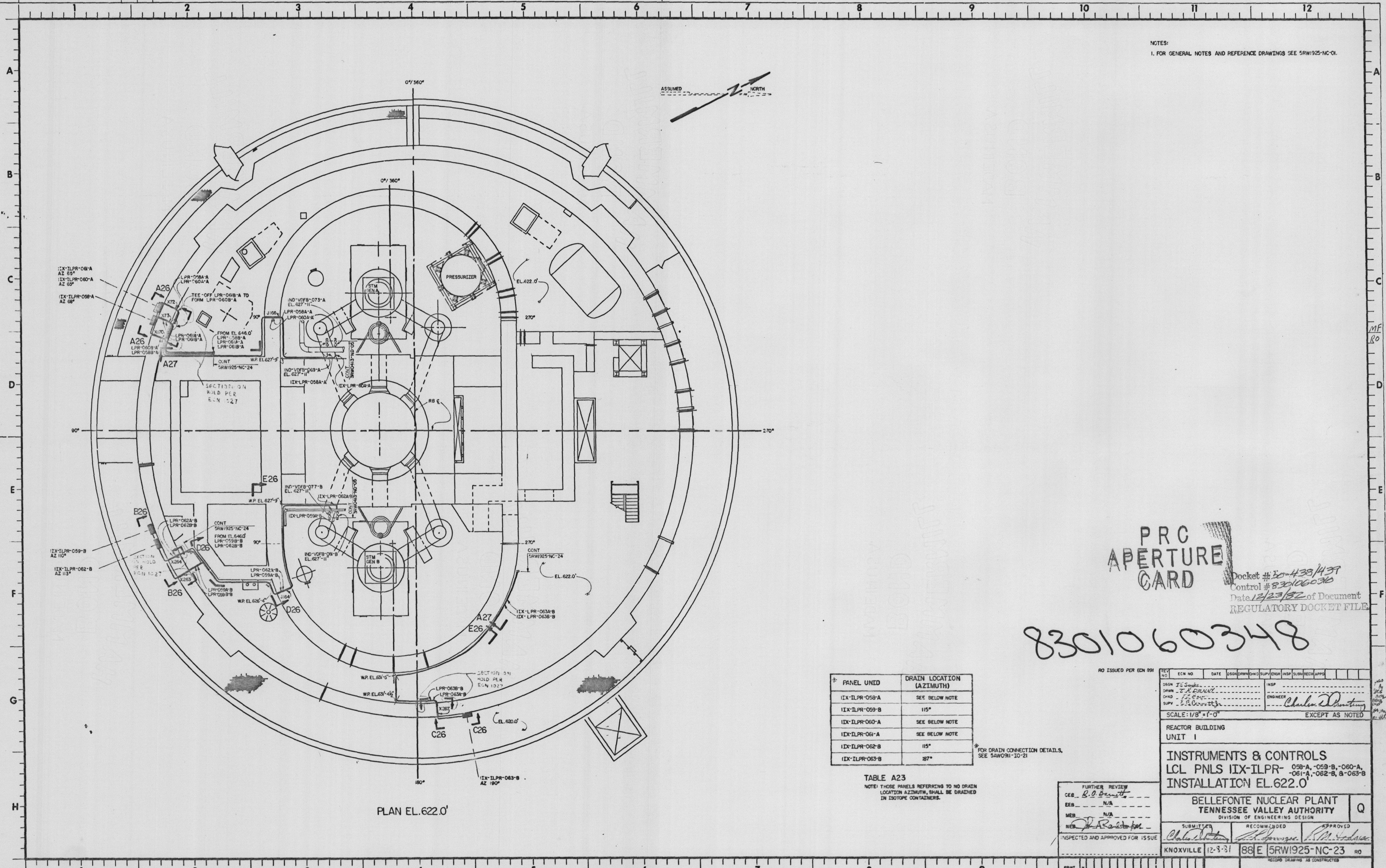
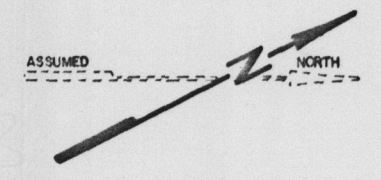


NOTES:  
1. FOR GENERAL NOTES AND REFERENCE DRAWINGS SEE 5RW1925-NC-01.



**PRC APERTURE CARD**

Docket # 50-438/439  
Control # 8301060348  
Date 12/23/82 of Document  
REGULATORY DOCKET FILE

8301060348

PANEL UNIT	DRAIN LOCATION (AZIMUTH)
IX-ILPR-058-A	SEE BELOW NOTE
IX-ILPR-059-B	115°
IX-ILPR-060-A	SEE BELOW NOTE
IX-ILPR-061-A	SEE BELOW NOTE
IX-ILPR-062-B	115°
IX-ILPR-063-B	87°

TABLE A23  
NOTE: THOSE PANELS REFERRING TO NO DRAIN LOCATION AZIMUTH, SHALL BE DRAINED IN ISOTOPE CONTAINERS.

\*FOR DRAIN CONNECTION DETAILS, SEE 5AW031-10-21

NO ISSUED PER ECN 891

REV NO.	ECN NO.	DATE	DESIGN	DRAWING	CHKD	SUPV	ENGR	INSP	SUBMIT	APPR

SCALE: 1/8" = 1'-0" EXCEPT AS NOTED

REACTOR BUILDING UNIT 1

INSTRUMENTS & CONTROLS  
LCL PNLs IIX-ILPR-058-A, -059-B, -060-A, -061-A, -062-B, -063-B  
INSTALLATION EL.622.0'

BELLEFONTE NUCLEAR PLANT  
TENNESSEE VALLEY AUTHORITY  
DIVISION OF ENGINEERING DESIGN

FURTHER REVIEW  
CEB: *R.O. Bennett*  
EEB: N/A  
MEB: N/A  
NEB: *R. R. ...*  
INSPECTED AND APPROVED FOR ISSUE

SUBMITTED: *Charles ...*  
RECOMMENDED: *R.M. ...*  
APPROVED: *R.M. ...*