

#### LEGEND

- Toll Road
- US Road
- State Road
- Railroad
- CB Right-of-Way
- Wood Stork Core Foraging Area
- County Boundary

#### REFERENCE

Substations and Right-of-Way: Progress Energy Florida & Golder Associates Inc., 2009;  
 Roads: Florida Department of Transportation, 2010; Railroads: FDEP, 1992; County Boundary:  
 U.S. Census Bureau, 2000; Wood Stork Colony Data: U.S. Fish & Wildlife Service, 2009;

4 2 0 4  
Miles

PROGRESS ENERGY FLORIDA  
 LEVY NUCLEAR PLANT

#### CITRUS - BROOKRIDGE LISTED SPECIES MAP



MDX File No. 093-89547/006			
DESIGN	DLH	24 Sept 2009	
GIS	DLH	07 Apr 2010	
CHECK	SAR	07 Apr 2010	
REVIEW	KBI	07 Apr 2010	

SCALE AS SHOWN REV. 0

**FIGURE 6  
 INDEX**





#### LEGEND

  CB Right-of-Way ▲ Florida Natural Areas Inventory Occurrence

#### GOLDER OBSERVED SPECIES

- |  |   |
|--|---|
| <span style="color: green;">▲</span> Gopher Tortoise | <span style="color: green;">★</span> Sherman's Fox Squirrel       |
| <span style="color: purple;">■</span> Giant Orchid   | <span style="color: blue;">●</span> Southeastern American Kestrel |

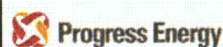
#### REFERENCE

Substations and Right-of-Way: Progress Energy Florida & Golder Associates Inc., 2009; Roads: Florida Department of Transportation, 2010; Railroads: FDEP, 1992; Listed Species Data: FNAI, 2006; Golder Observed Species, 2009; Aerials: FDOT & Progress Energy, 2009

NOTE: Please refer to Index page for the portions of the Citrus - Brookridge line that are within Wood Stork Core Foraging Areas.

PROGRESS ENERGY FLORIDA  
LEVY NUCLEAR PLANT

CITRUS - BROOKRIDGE  
LISTED SPECIES MAP



MXD File No. 093-89547006		SCALE AS SHOWN	REV. 0
DESIGN	DLH	24 Sept 2009	
GIS	DLH	07 Apr 2010	
CHECK	SAR	07 Apr 2010	
REVIEW	KB	07 Apr 2010	

**FIGURE 6**  
**PAGE 1 OF 20**





#### LEGEND

CB Right-of-Way ▲ Florida Natural Areas Inventory Occurrence

#### GOLDER OBSERVED SPECIES

- |  |   |
|--|---|
| <span style="color: green;">▲</span> Gopher Tortoise | <span style="color: green;">★</span> Sherman's Fox Squirrel       |
| <span style="color: purple;">■</span> Giant Orchid   | <span style="color: blue;">●</span> Southeastern American Kestrel |

#### REFERENCE

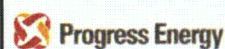
Substations and Right-of-Way: Progress Energy Florida & Golder Associates Inc., 2009; Roads: Florida Department of Transportation, 2010; Railroads: FDEP, 1992; Listed Species Data: FNAI, 2006; Golder Observed Species, 2009; Aerials: FDOT & Progress Energy, 2009

1,000 500 0 1,000  
Feet

NOTE: Please refer to Index page for the portions of the Citrus - Brookridge line that are within Wood Stork Core Foraging Areas.

PROGRESS ENERGY FLORIDA  
LEVY NUCLEAR PLANT

CITRUS - BROOKRIDGE  
LISTED SPECIES MAP



MXD File No. 093-89547006		SCALE AS SHOWN	REV. 0
DESIGN	DLH	24 Sept 2009	
GIS	DLH	07 Apr 2010	
CHECK	SAR	07 Apr 2010	
REVIEW	KB	07 Apr 2010	

FIGURE 6

PAGE 2 OF 20





#### LEGEND

CB Right-of-Way ▲ Florida Natural Areas Inventory Occurrence

#### GOLDER OBSERVED SPECIES

- |  |   |
|--|---|
| <span style="color: green;">▲</span> Gopher Tortoise | <span style="color: green;">★</span> Sherman's Fox Squirrel       |
| <span style="color: purple;">■</span> Giant Orchid   | <span style="color: blue;">●</span> Southeastern American Kestrel |

#### REFERENCE

Substations and Right-of-Way: Progress Energy Florida & Golder Associates Inc., 2009; Roads: Florida Department of Transportation, 2010; Railroads: FDEP, 1992; Listed Species Data: FNAI, 2006; Golder Observed Species, 2009; Aerials: FDOT & Progress Energy, 2009

1,000 500 0 1,000  
Feet

NOTE: Please refer to Index page for the portions of the Citrus - Brookridge line that are within Wood Stork Core Foraging Areas.

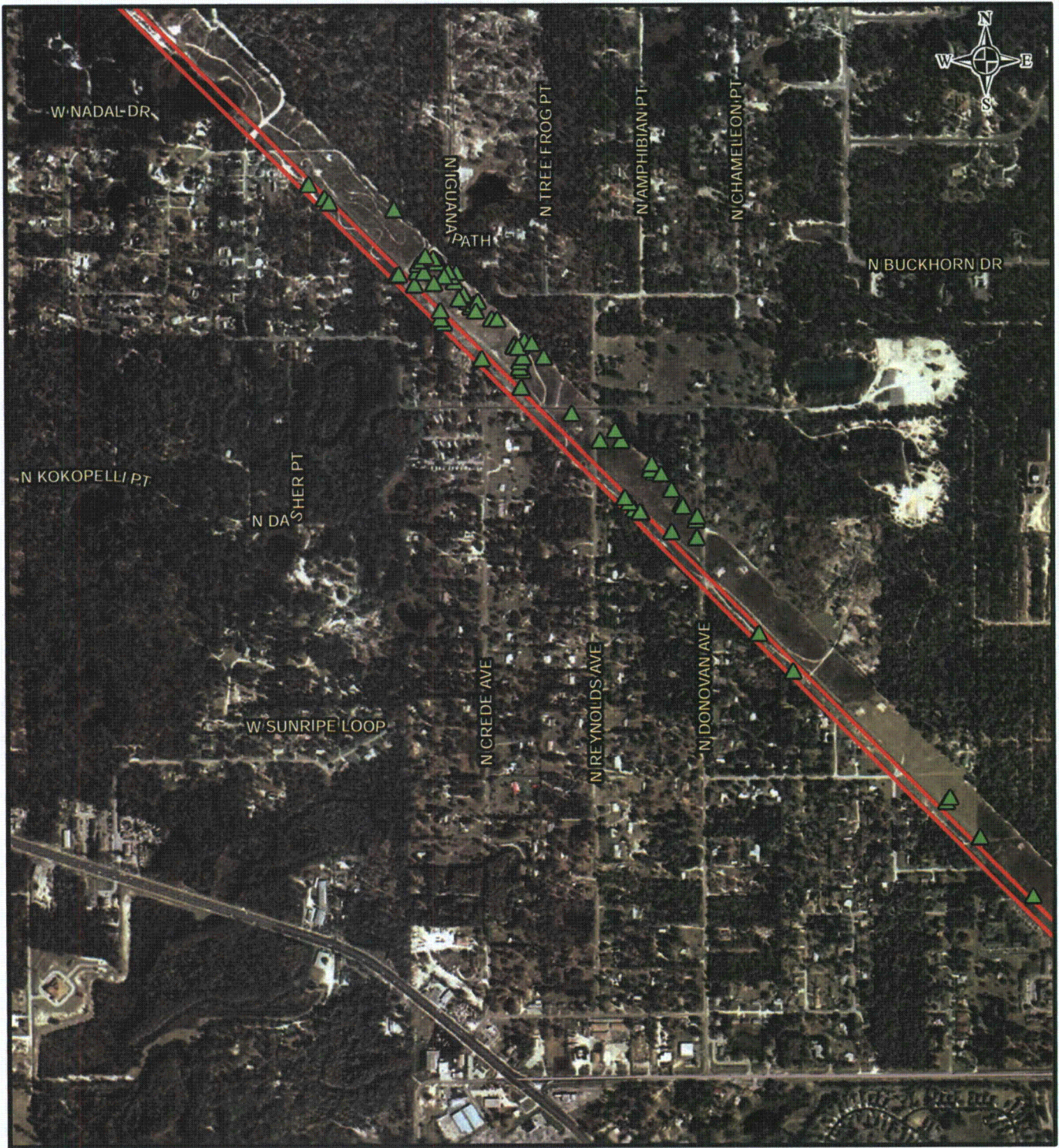
PROGRESS ENERGY FLORIDA  
LEVY NUCLEAR PLANT

CITRUS - BROOKRIDGE  
LISTED SPECIES MAP



MXD File No. 093-895471006			SCALE AS SHOWN	REV. 0
DESIGN	DLH	24 Sept 2009	<b>FIGURE 6</b>	<b>PAGE 3 OF 20</b>
GIS	DLH	07 Apr 2010		
CHECK	SAR	07 Apr 2010		
REVIEW	KB	07 Apr 2010		





#### LEGEND

CB Right-of-Way ▲ Florida Natural Areas Inventory Occurrence

#### GOLDER OBSERVED SPECIES

- |  |   |
|--|---|
| <span style="color: green;">▲</span> Gopher Tortoise | <span style="color: green;">★</span> Sherman's Fox Squirrel       |
| <span style="color: purple;">■</span> Giant Orchid   | <span style="color: blue;">●</span> Southeastern American Kestrel |

#### REFERENCE

Substations and Right-of-Way: Progress Energy Florida & Golder Associates Inc., 2009; Roads: Florida Department of Transportation, 2010; Railroads: FDEP, 1992; Listed Species Data: FNAI, 2006; Golder Observed Species, 2009; Aerials: FDOT & Progress Energy, 2009

1,000 500 0 1,000  
Feet

NOTE: Please refer to Index page for the portions of the Citrus - Brookridge line that are within Wood Stork Core Foraging Areas.

PROGRESS ENERGY FLORIDA  
LEVY NUCLEAR PLANT

#### CITRUS - BROOKRIDGE LISTED SPECIES MAP



MXD File No. 093-89547006	SCALE AS SHOWN	REV. 0
DESIGN DLH 24 Sept 2009	FIGURE 6 PAGE 4 OF 20	
GIS DLH 07 Apr 2010		
CHECK SAR 07 Apr 2010		
REVIEW KB 07 Apr 2010		





#### LEGEND

CB Right-of-Way ▲ Florida Natural Areas Inventory Occurrence

### GOLDER OBSERVED SPECIES

- |   |  |
|---|--|
| <span style="color: green; font-weight: bold;">▲</span> Gopher Tortoise | <span style="color: green; font-weight: bold;">★</span> Sherman's Fox Squirrel       |
| <span style="color: purple; font-weight: bold;">■</span> Giant Orchid   | <span style="color: blue; font-weight: bold;">●</span> Southeastern American Kestrel |

#### REFERENCE

Substations and Right-of-Way: Progress Energy Florida & Golder Associates Inc., 2009; Roads: Florida Department of Transportation, 2010; Railroads: FDEP, 1992; Listed Species Data: FNAI, 2006; Golder Observed Species, 2009; Aerials: FDOT & Progress Energy, 2009

1,000 500 0 1,000  
Feet

NOTE: Please refer to Index page for the portions of the Citrus - Brookridge line that are within Wood Stork Core Foraging Areas.

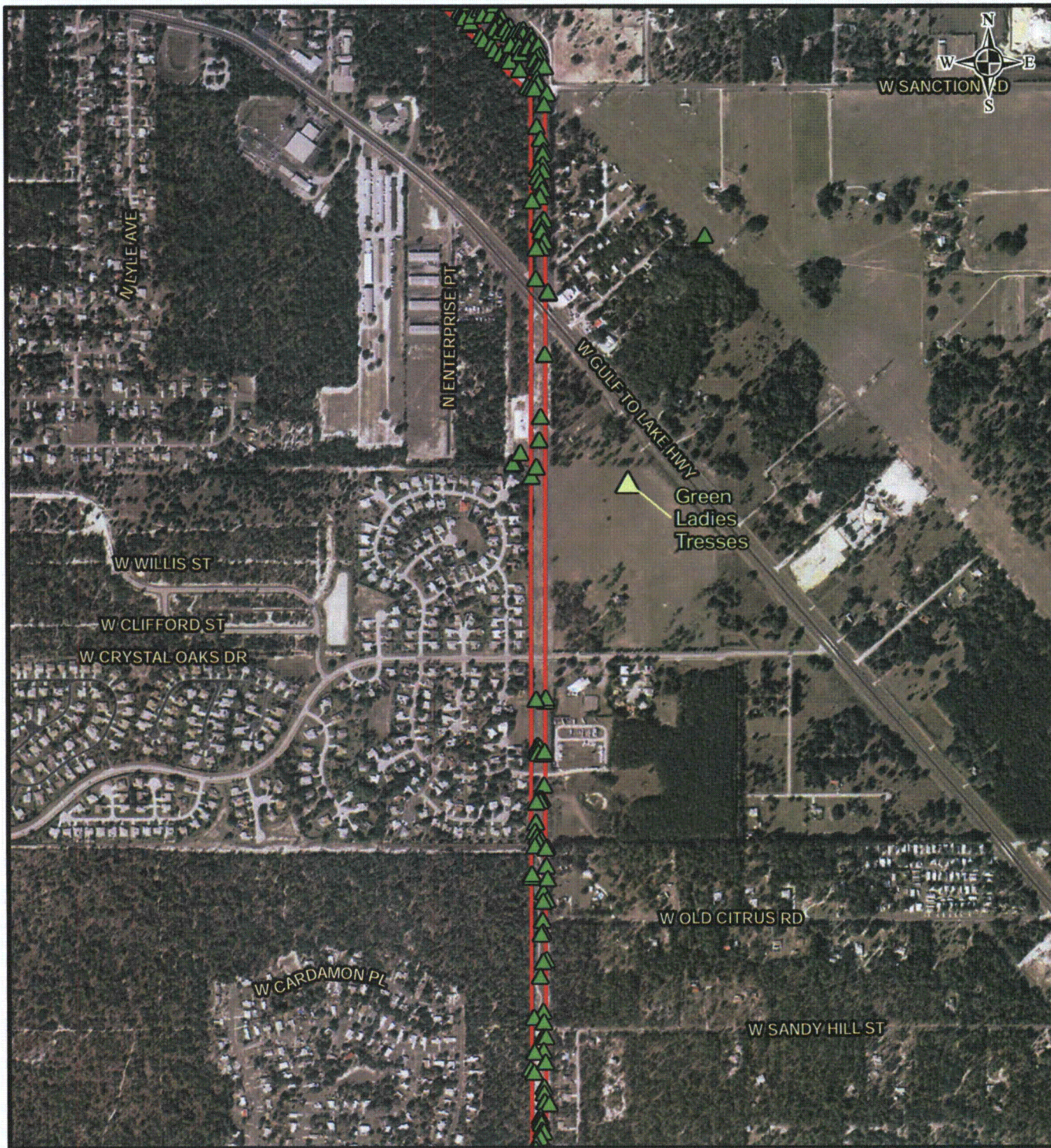
PROGRESS ENERGY FLORIDA  
LEVY NUCLEAR PLANT

### CITRUS - BROOKRIDGE LISTED SPECIES MAP



MXD File No. 093-895471006			SCALE AS SHOWN	REV. 0
DESIGN	DLH	24 Sept 2009	<b>FIGURE 6</b> <b>PAGE 5 OF 20</b>	
CIS	DLH	07 Apr 2010		
CHECK	SAR	07 Apr 2010		
REVIEW	KB	07 Apr 2010		





#### LEGEND

- CB Right-of-Way ▲ Florida Natural Areas Inventory Occurrence

#### GOLDER OBSERVED SPECIES

- ▲ Gopher Tortoise ★ Sherman's Fox Squirrel  
■ Giant Orchid ● Southeastern American Kestrel

#### REFERENCE

Substations and Right-of-Way: Progress Energy Florida & Golder Associates Inc., 2009; Roads: Florida Department of Transportation, 2010; Railroads: FDEP, 1992; Listed Species Data: FNAI, 2006; Golder Observed Species, 2009; Aerials: FDOT & Progress Energy, 2009

1,000 500 0 1,000  
Feet

NOTE: Please refer to Index page for the portions of the Citrus - Brookridge line that are within Wood Stork Core Foraging Areas.

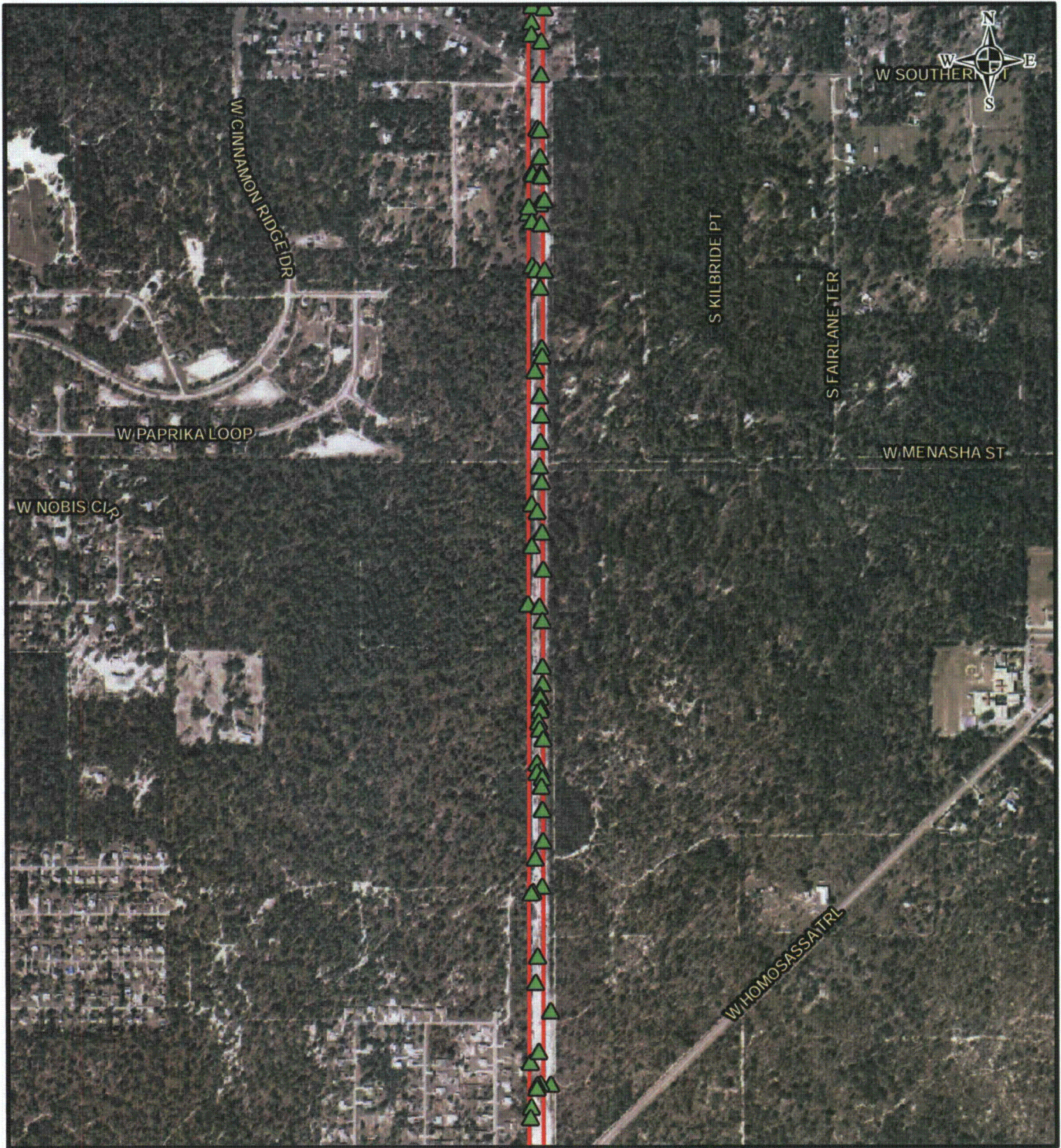
PROGRESS ENERGY FLORIDA  
LEVY NUCLEAR PLANT

CITRUS - BROOKRIDGE  
LISTED SPECIES MAP



MXD File No. 093-895471006			SCALE AS SHOWN	REV. 0
DESIGN	DLH	24 Sept 2009	FIGURE 6 PAGE 6 OF 20	
GIS	DLH	07 Apr 2010		
CHECK	SAR	07 Apr 2010		
REVIEW	KB	07 Apr 2010		





#### LEGEND

CB Right-of-Way ▲ Florida Natural Areas Inventory Occurrence

#### GOLDER OBSERVED SPECIES

- |  |   |
|--|---|
| <span style="color: green;">▲</span> Gopher Tortoise | <span style="color: green;">★</span> Sherman's Fox Squirrel       |
| <span style="color: purple;">■</span> Giant Orchid   | <span style="color: blue;">●</span> Southeastern American Kestrel |

#### REFERENCE

Substations and Right-of-Way: Progress Energy Florida & Golder Associates Inc., 2009; Roads: Florida Department of Transportation, 2010; Railroads: FDEP, 1992; Listed Species Data: FNAI, 2006; Golder Observed Species, 2009; Aerials: FDOT & Progress Energy, 2009

1,000 500 0 1,000  
Feet

NOTE: Please refer to Index page for the portions of the Citrus - Brookridge line that are within Wood Stork Core Foraging Areas.

PROGRESS ENERGY FLORIDA  
LEVY NUCLEAR PLANT

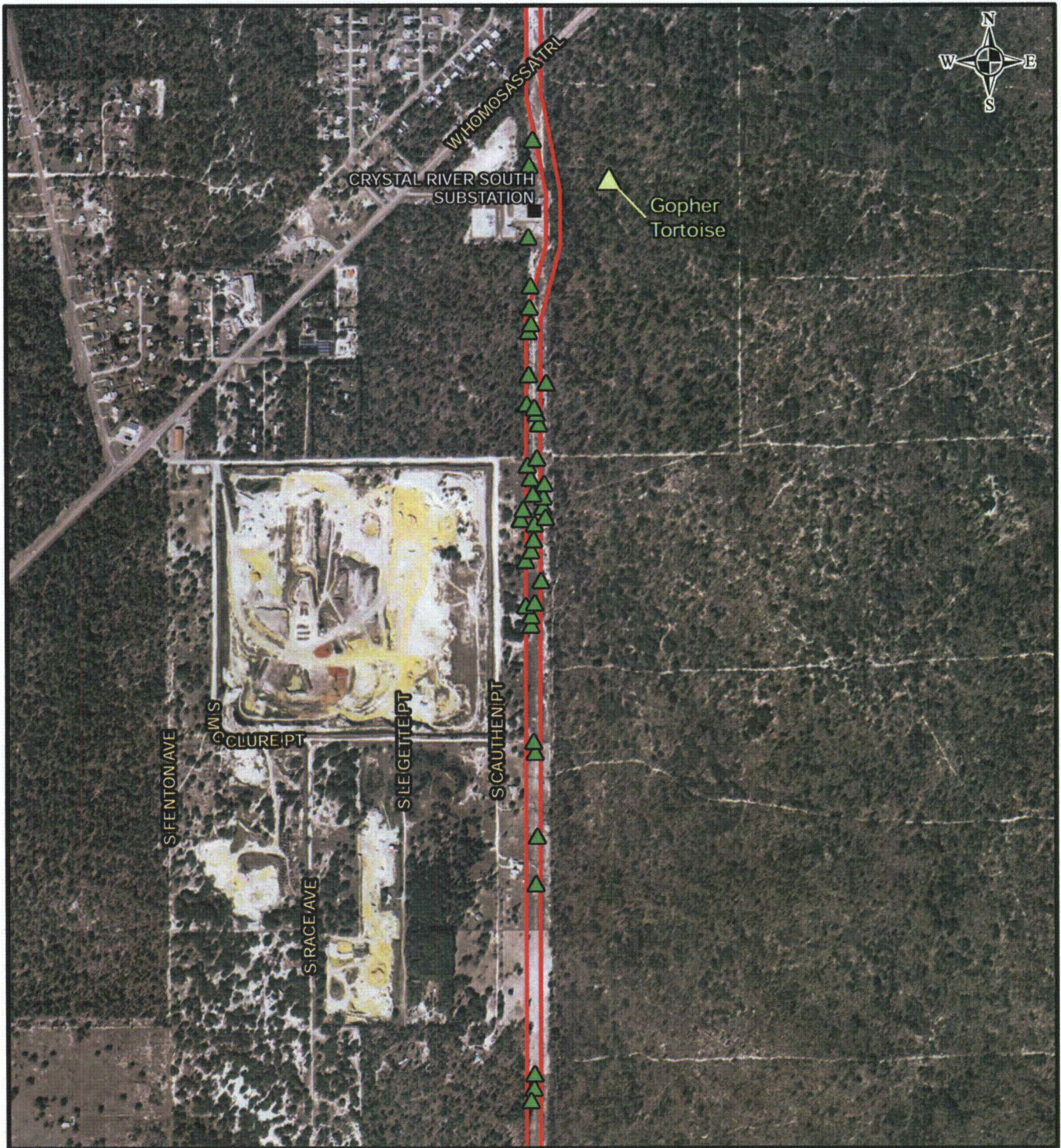
CITRUS - BROOKRIDGE  
LISTED SPECIES MAP



MXD File No. 093-895471006			SCALE AS SHOWN	REV. 0
DESIGN	DLH	24 Sept 2009	<b>FIGURE 6</b>	
GIS	DLH	07 Apr 2010		
CHECK	SAR	07 Apr 2010		
REVIEW	KB	07 Apr 2010		

**PAGE 7 OF 20**





#### LEGEND

CB Right-of-Way ▲ Florida Natural Areas Inventory Occurrence

#### GOLDER OBSERVED SPECIES

- |  |   |
|--|---|
| <span style="color: green;">▲</span> Gopher Tortoise | <span style="color: green;">★</span> Sherman's Fox Squirrel       |
| <span style="color: purple;">■</span> Giant Orchid   | <span style="color: blue;">●</span> Southeastern American Kestrel |

#### REFERENCE

Substations and Right-of-Way: Progress Energy Florida & Golder Associates Inc., 2009; Roads: Florida Department of Transportation, 2010; Railroads: FDEP, 1992; Listed Species Data: FNAI, 2006; Golder Observed Species, 2009; Aerials: FDOT & Progress Energy, 2009

1,000 500 0 1,000  
Feet

NOTE: Please refer to Index page for the portions of the Citrus - Brookridge line that are within Wood Stork Core Foraging Areas.

PROGRESS ENERGY FLORIDA  
LEVY NUCLEAR PLANT

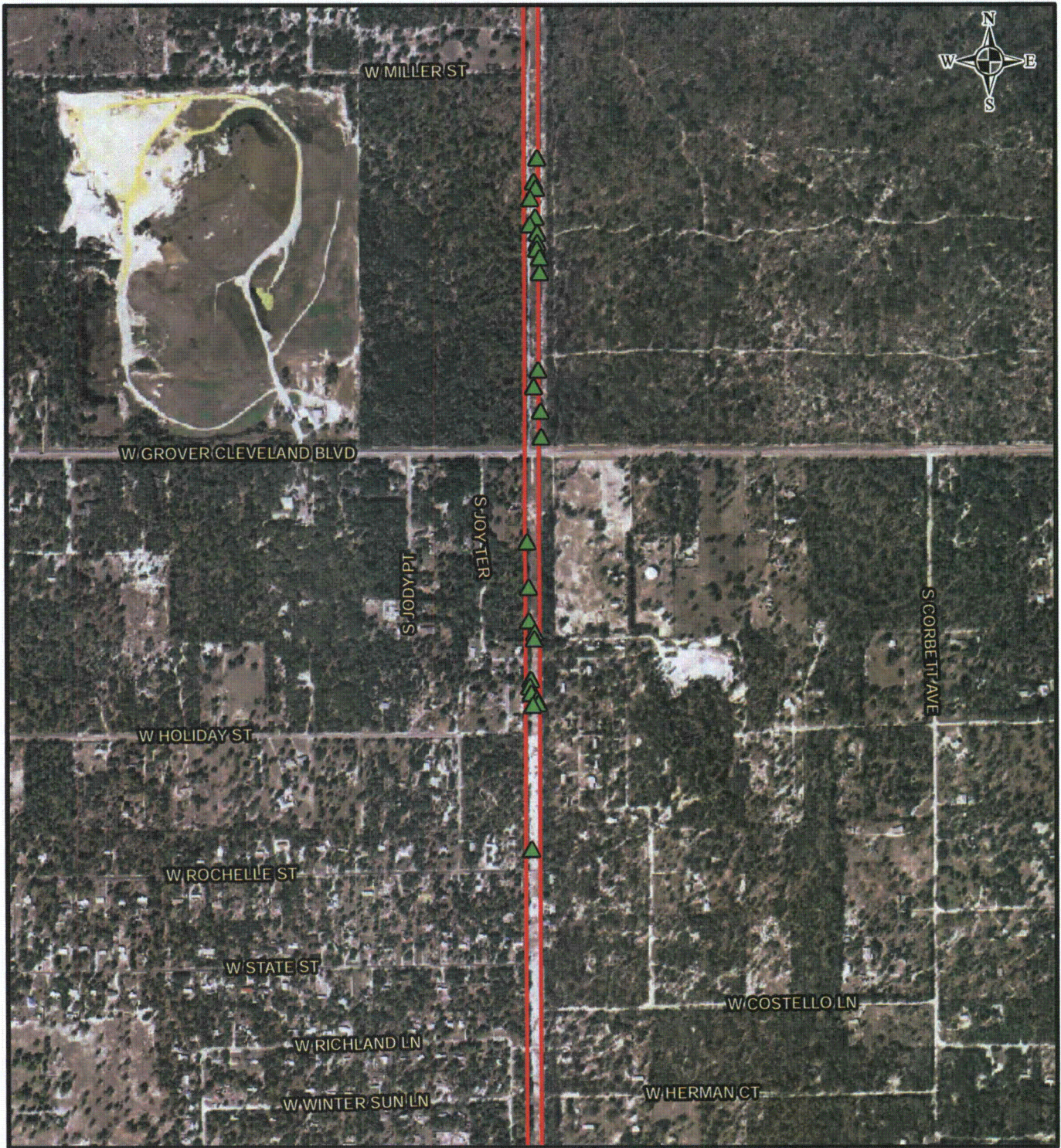
CITRUS - BROOKRIDGE  
LISTED SPECIES MAP



MXD File No. 093-895471006			SCALE AS SHOWN	REV. 0
DESIGN	DLH	24 Sept 2009	FIGURE 6 PAGE 8 OF 20	
GIS	DLH	07 Apr 2010		
CHECK	SAR	07 Apr 2010		
REVIEW	KB	07 Apr 2010		

FIGURE 6  
PAGE 8 OF 20





#### LEGEND

CB Right-of-Way ▲ Florida Natural Areas Inventory Occurrence

#### GOLDER OBSERVED SPECIES

- |  |   |
|--|---|
| <span style="color: green;">▲</span> Gopher Tortoise | <span style="color: green;">★</span> Sherman's Fox Squirrel       |
| <span style="color: purple;">■</span> Giant Orchid   | <span style="color: blue;">●</span> Southeastern American Kestrel |

#### REFERENCE

Substations and Right-of-Way: Progress Energy Florida & Golder Associates Inc., 2009; Roads: Florida Department of Transportation, 2010; Railroads: FDEP, 1992; Listed Species Data: FNAI, 2006; Golder Observed Species, 2009; Aerials: FDOT & Progress Energy, 2009

1,000 500 0 1,000  
Feet

NOTE: Please refer to Index page for the portions of the Citrus - Brookridge line that are within Wood Stork Core Foraging Areas.

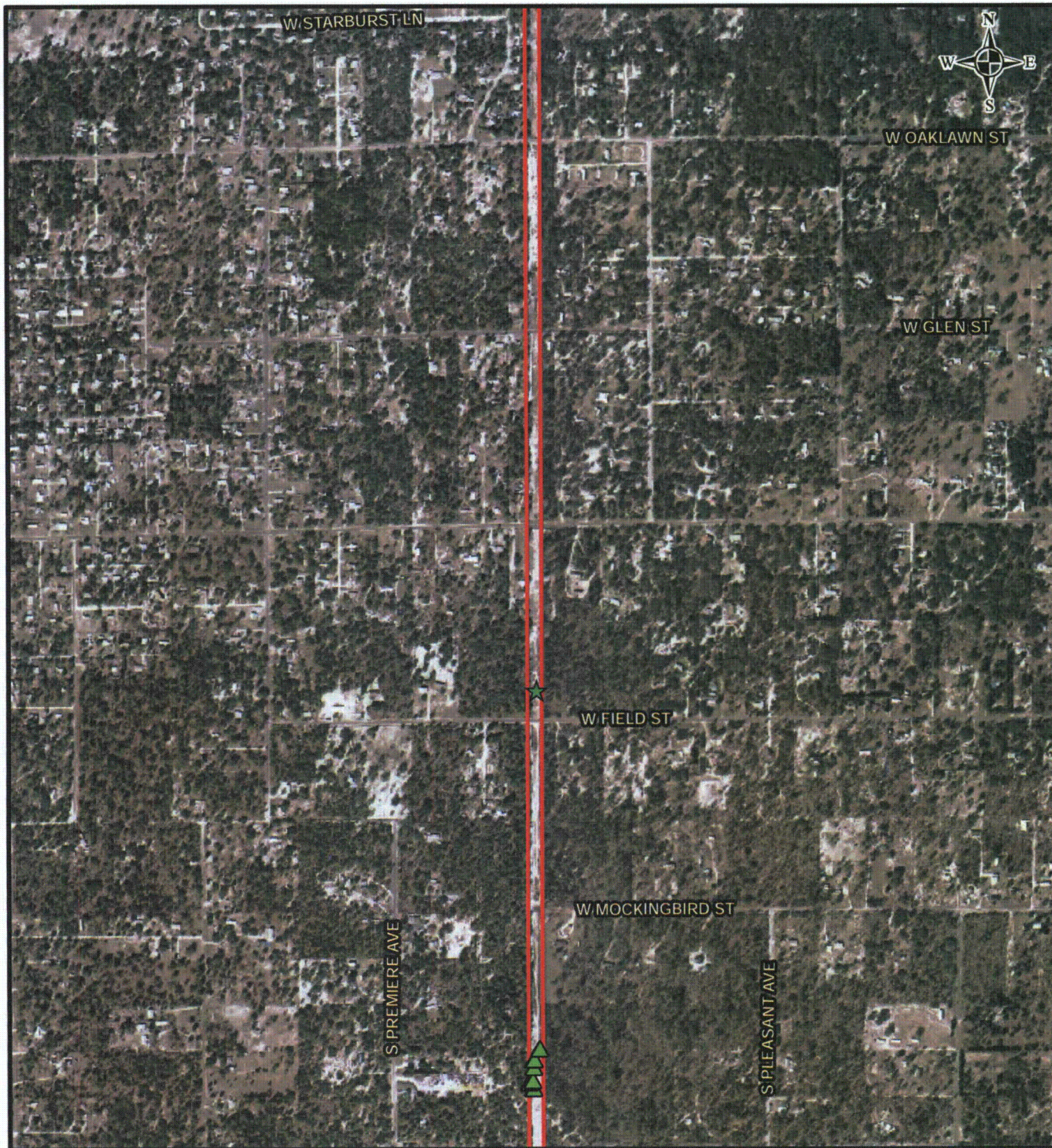
PROGRESS ENERGY FLORIDA  
LEVY NUCLEAR PLANT

CITRUS - BROOKRIDGE  
LISTED SPECIES MAP



MXD File No. 093-89547006			SCALE AS SHOWN	REV. 0
DESIGN	DLH	24 Sept 2009	FIGURE 6 PAGE 9 OF 20	
GIS	DLH	07 Apr 2010		
CHECK	SAR	07 Apr 2010		
REVIEW	KB	07 Apr 2010		





# LEGEND

- CB Right-of-Way
- ▲ Florida Natural Areas Inventory Occurrence

## GOLDER OBSERVED SPECIES

- ▲ Gopher Tortoise
- ★ Sherman's Fox Squirrel
- Giant Orchid
- Southeastern American Kestrel

# REFERENCE

Substations and Right-of-Way: Progress Energy Florida & Golder Associates Inc., 2009; Roads: Florida Department of Transportation, 2010; Railroads: FDEP, 1992; Listed Species Data: FNAI, 2006; Golder Observed Species, 2009; Aerials: FDOT & Progress Energy, 2009

1,000 500 0 1,000 Feet

NOTE: Please refer to Index page for the portions of the Citrus - Brookridge line that are within Wood Stork Core Foraging Areas.

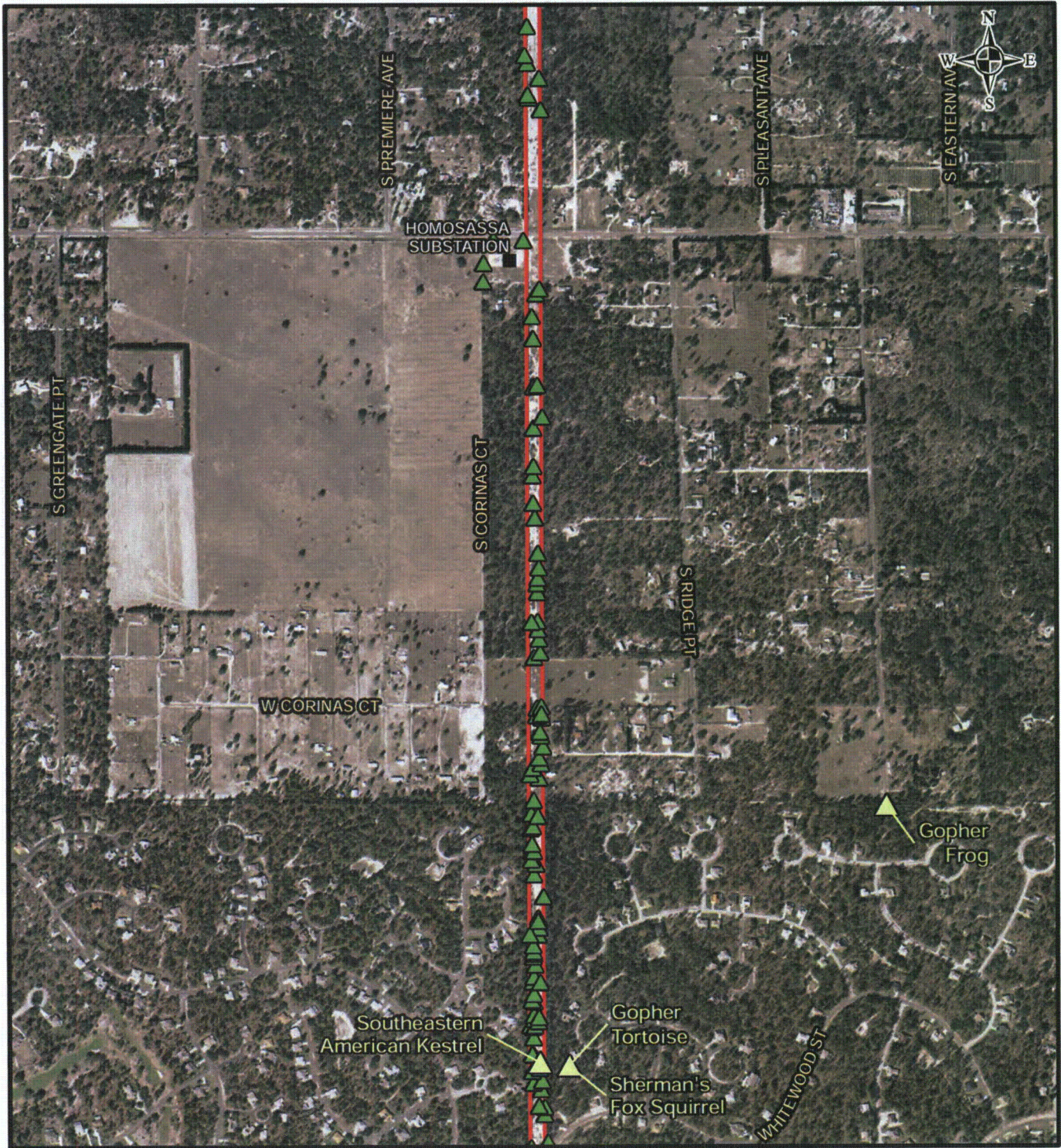
PROGRESS ENERGY FLORIDA  
LEVY NUCLEAR PLANT

CITRUS - BROOKRIDGE  
LISTED SPECIES MAP



MXD File No. 093-89547/006			SCALE AS SHOWN	REV. 0
DESIGN	DLH	24 Sept 2009	FIGURE 6 PAGE 10 OF 20	
GIS	DLH	07 Apr 2010		
CHECK	SAR	07 Apr 2010		
REVIEW	KB	07 Apr 2010		





#### LEGEND

CB Right-of-Way    ▲ Florida Natural Areas Inventory Occurrence

#### GOLDER OBSERVED SPECIES

- |  |   |
|--|---|
| <span style="color: green;">▲</span> Gopher Tortoise | <span style="color: green;">★</span> Sherman's Fox Squirrel       |
| <span style="color: purple;">■</span> Giant Orchid   | <span style="color: blue;">●</span> Southeastern American Kestrel |

#### REFERENCE

Substations and Right-of-Way: Progress Energy Florida & Golder Associates Inc., 2009; Roads: Florida Department of Transportation, 2010; Railroads: FDEP, 1992; Listed Species Data: FNAI, 2006; Golder Observed Species, 2009; Aerials: FDOT & Progress Energy, 2009

1,000 500 0 1,000  
Feet

NOTE: Please refer to Index page for the portions of the Citrus - Brookridge line that are within Wood Stork Core Foraging Areas.

PROGRESS ENERGY FLORIDA  
LEVY NUCLEAR PLANT

CITRUS - BROOKRIDGE  
LISTED SPECIES MAP



MXD File No. 093-89547006			SCALE AS SHOWN	REV. 0
DESIGN	DLH	24 Sept 2009	FIGURE 6 PAGE 11 OF 20	
GIS	DLH	07 Apr 2010		
CHECK	SAR	07 Apr 2010		
REVIEW	KB	07 Apr 2010		





# LEGEND

- CB Right-of-Way ▲ Florida Natural Areas Inventory Occurrence

## GOLDER OBSERVED SPECIES

- ▲ Gopher Tortoise ★ Sherman's Fox Squirrel  
■ Giant Orchid ● Southeastern American Kestrel

## REFERENCE

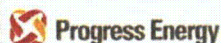
Substations and Right-of-Way: Progress Energy Florida & Golder Associates Inc., 2009; Roads: Florida Department of Transportation, 2010; Railroads: FDEP, 1992; Listed Species Data: FNAI, 2006; Golder Observed Species, 2009; Aerials: FDOT & Progress Energy, 2009

1,000 500 0 1,000 Feet

NOTE: Please refer to Index page for the portions of the Citrus - Brookridge line that are within Wood Stork Core Foraging Areas.

PROGRESS ENERGY FLORIDA  
LEVY NUCLEAR PLANT

CITRUS - BROOKRIDGE  
LISTED SPECIES MAP



MXD File No. 093-89547\006		SCALE AS SHOWN	REV. 0
DESIGN	DLH	24 Sept 2009	FIGURE 6 PAGE 12 OF 20
GIS	DLH	07 Apr 2010	
CHECK	SAR	07 Apr 2010	
REVIEW	KB	07 Apr 2010	





#### LEGEND

CB Right-of-Way ▲ Florida Natural Areas Inventory Occurrence

#### GOLDER OBSERVED SPECIES

- |  |   |
|--|---|
| <span style="color: green;">▲</span> Gopher Tortoise | <span style="color: green;">★</span> Sherman's Fox Squirrel       |
| <span style="color: purple;">■</span> Giant Orchid   | <span style="color: blue;">●</span> Southeastern American Kestrel |

#### REFERENCE

Substations and Right-of-Way: Progress Energy Florida & Golder Associates Inc., 2009; Roads: Florida Department of Transportation, 2010; Railroads: FDEP, 1992; Listed Species Data: FNAI, 2006; Golder Observed Species, 2009; Aerials: FDOT & Progress Energy, 2009

1,000 500 0 1,000  
Feet

NOTE: Please refer to Index page for the portions of the Citrus - Brookridge line that are within Wood Stork Core Foraging Areas.

PROGRESS ENERGY FLORIDA  
LEVY NUCLEAR PLANT

CITRUS - BROOKRIDGE  
LISTED SPECIES MAP



MXD File No. 093-89547006			SCALE AS SHOWN	REV. 0
DESIGN	DLH	24 Sept 2009	FIGURE 6 PAGE 13 OF 20	
GIS	DLH	07 Apr 2010		
CHECK	SAR	07 Apr 2010		
REVIEW	KB	07 Apr 2010		





# LEGEND

CB Right-of-Way
 ▲ Florida Natural Areas Inventory Occurrence

## GOLDER OBSERVED SPECIES

- |   |  |
|---|--|
| <span style="color: green; font-weight: bold;">▲</span> Gopher Tortoise | <span style="color: green; font-weight: bold;">★</span> Sherman's Fox Squirrel       |
| <span style="color: purple; font-weight: bold;">■</span> Giant Orchid   | <span style="color: blue; font-weight: bold;">●</span> Southeastern American Kestrel |

# REFERENCE

Substations and Right-of-Way: Progress Energy Florida & Golder Associates Inc., 2009; Roads: Florida Department of Transportation, 2010; Railroads: FDEP, 1992; Listed Species Data: FNAI, 2006; Golder Observed Species, 2009; Aerials: FDOT & Progress Energy, 2009

1,000 500 0 1,000  
 Feet

NOTE: Please refer to Index page for the portions of the Citrus - Brookridge line that are within Wood Stork Core Foraging Areas.

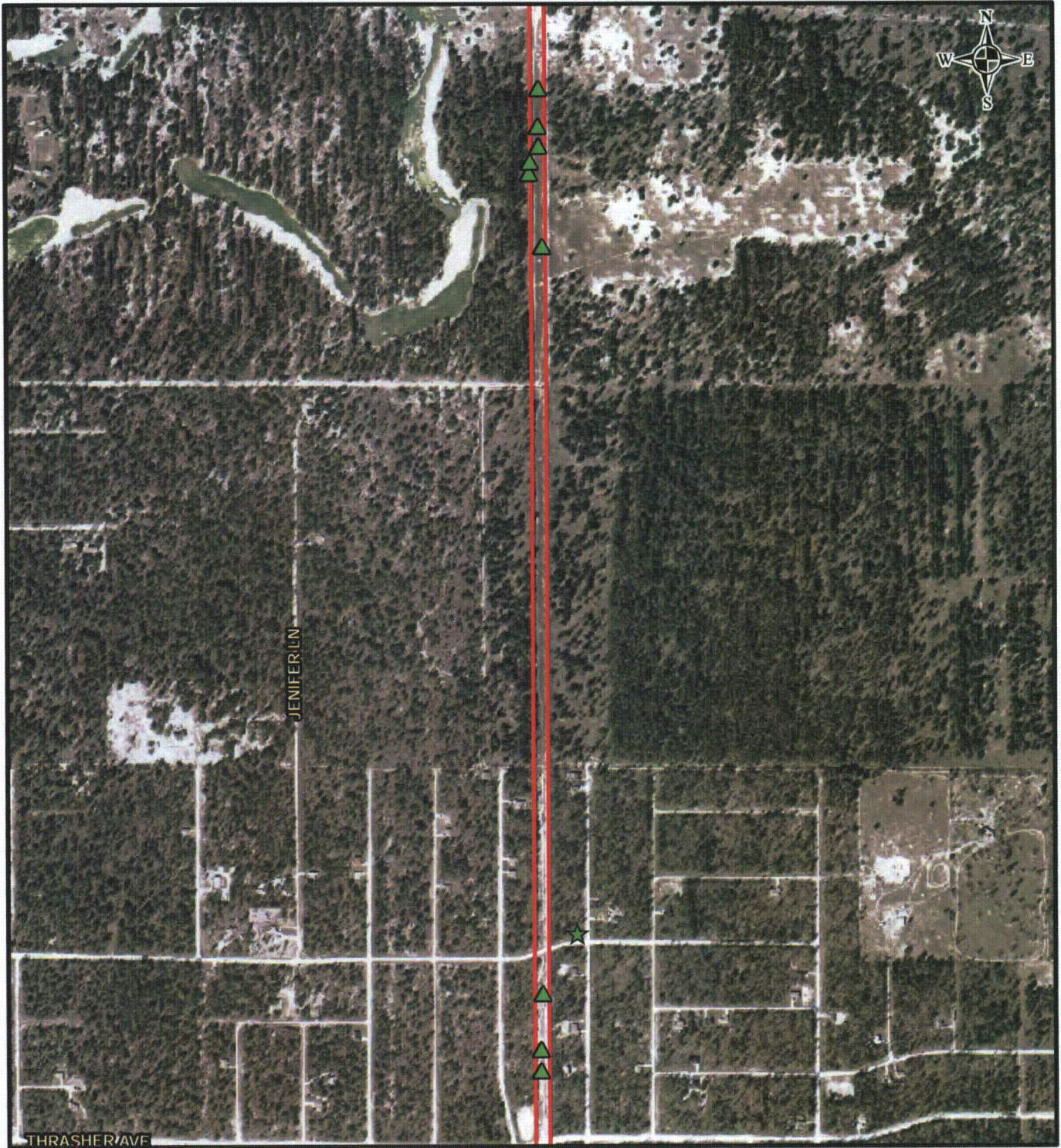
PROGRESS ENERGY FLORIDA  
 LEVY NUCLEAR PLANT

CITRUS - BROOKRIDGE  
 LISTED SPECIES MAP



MXD File No. 093-89547006		SCALE AS SHOWN	REV. 0
DESIGN	DLH	24 Sept 2009	FIGURE 6 PAGE 14 OF 20
GIS	DLH	07 Apr 2010	
CHECK	SAR	07 Apr 2010	
REVIEW	KB	07 Apr 2010	





#### LEGEND

CB Right-of-Way ▲ Florida Natural Areas Inventory Occurrence

#### GOLDER OBSERVED SPECIES

- |  |   |
|--|---|
| <span style="color: green;">▲</span> Gopher Tortoise | <span style="color: green;">★</span> Sherman's Fox Squirrel       |
| <span style="color: purple;">■</span> Giant Orchid   | <span style="color: blue;">●</span> Southeastern American Kestrel |

#### REFERENCE

Substations and Right-of-Way: Progress Energy Florida & Golder Associates Inc., 2009; Roads: Florida Department of Transportation, 2010; Railroads: FDEP, 1992; Listed Species Data: FNAI, 2006; Golder Observed Species, 2009; Aerials: FDOT & Progress Energy, 2009

NOTE: Please refer to Index page for the portions of the Citrus - Brookridge line that are within Wood Stork Core Foraging Areas.

PROGRESS ENERGY FLORIDA  
LEVY NUCLEAR PLANT

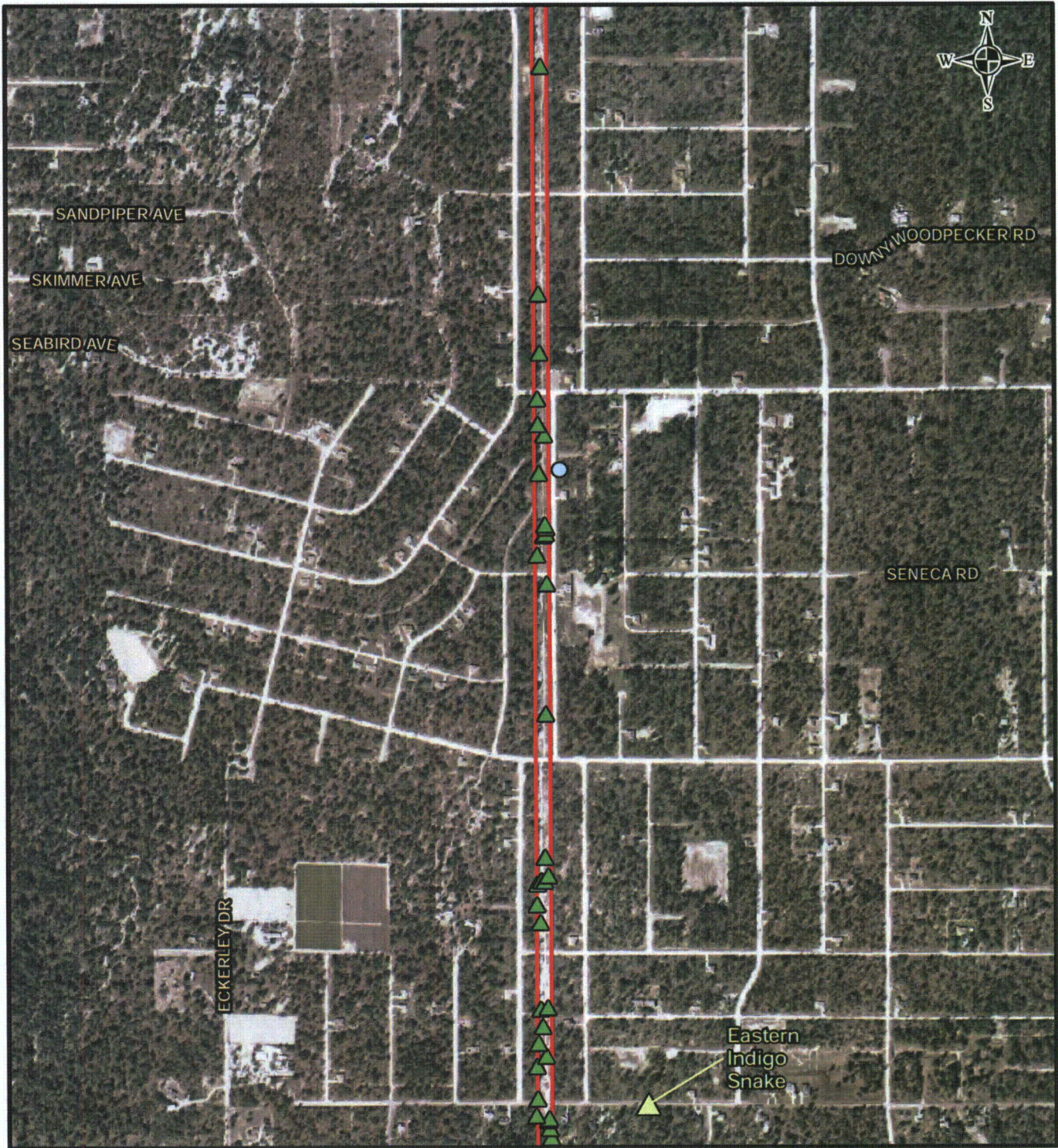
CITRUS - BROOKRIDGE  
LISTED SPECIES MAP



MXD File No. 093-89547006	SCALE AS SHOWN	REV. 0
DESIGN DLH 24 Sept 2009	<b>FIGURE 6</b>	
GIS DLH 07 Apr 2010		
CHECK SAR 07 Apr 2010		
REVIEW KB 07 Apr 2010		

PAGE 15 OF 20





#### LEGEND

CB Right-of-Way ▲ Florida Natural Areas Inventory Occurrence

#### GOLDER OBSERVED SPECIES

- |  |   |
|--|---|
| <span style="color: green;">▲</span> Gopher Tortoise | <span style="color: green;">★</span> Sherman's Fox Squirrel       |
| <span style="color: purple;">■</span> Giant Orchid   | <span style="color: blue;">●</span> Southeastern American Kestrel |

#### REFERENCE

Substations and Right-of-Way: Progress Energy Florida & Golder Associates Inc., 2009; Roads: Florida Department of Transportation, 2010; Railroads: FDEP, 1992; Listed Species Data: FNAI, 2006; Golder Observed Species, 2009; Aerials: FDOT & Progress Energy, 2009

1,000 500 0 1,000  
Feet

NOTE: Please refer to Index page for the portions of the Citrus - Brookridge line that are within Wood Stork Core Foraging Areas.

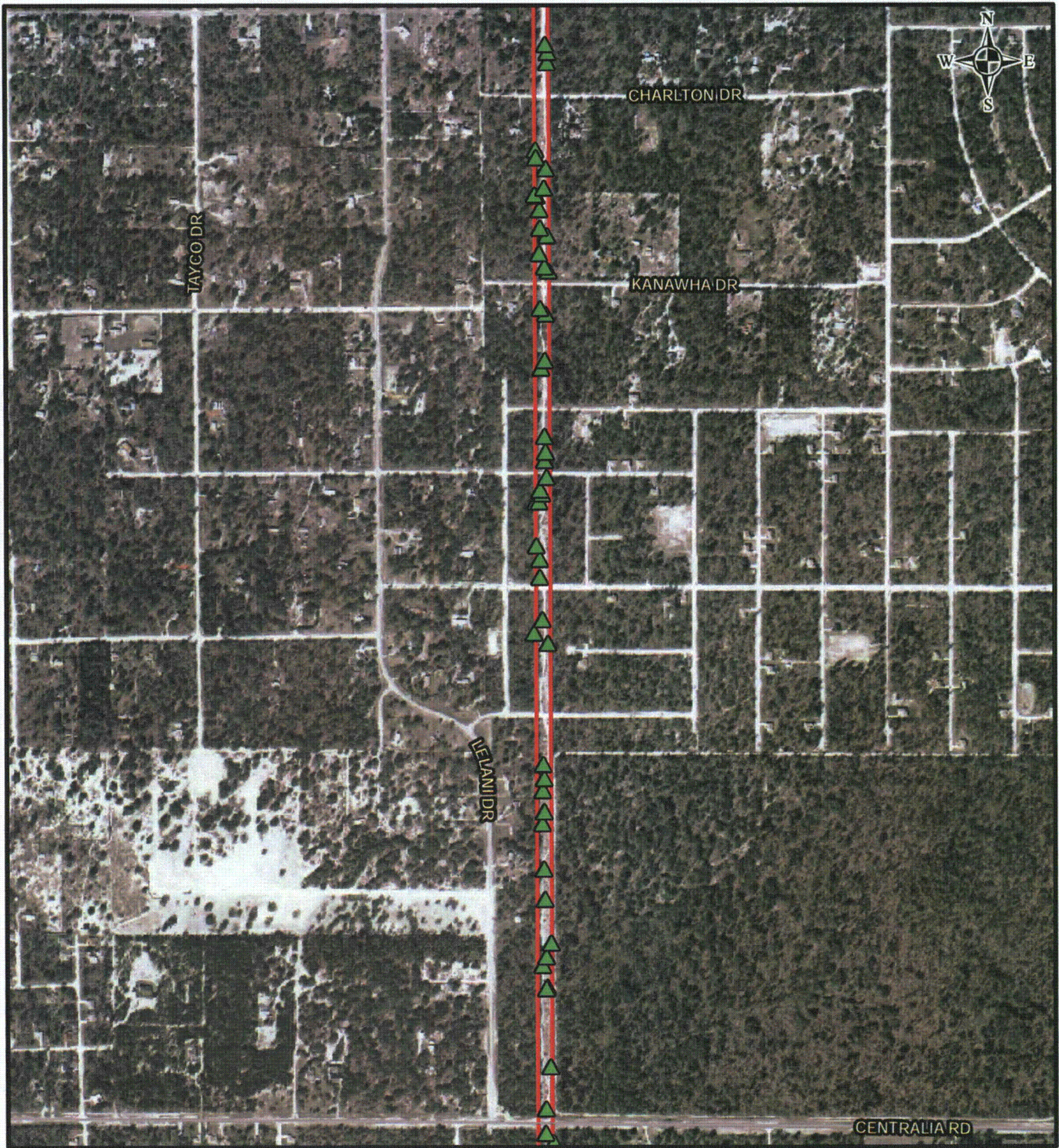
PROGRESS ENERGY FLORIDA  
LEVY NUCLEAR PLANT

CITRUS - BROOKRIDGE  
LISTED SPECIES MAP



MXD File No. 093-89547006			SCALE AS SHOWN	REV. 0
DESIGN	DLH	24 Sept 2009	<b>FIGURE 6</b> <b>PAGE 16 OF 20</b>	
GIS	DLH	07 Apr 2010		
CHECK	SAR	07 Apr 2010		
REVIEW	KB	07 Apr 2010		





#### LEGEND

CB Right-of-Way ▲ Florida Natural Areas Inventory Occurrence

#### GOLDER OBSERVED SPECIES

- |  |   |
|--|---|
| <span style="color: green;">▲</span> Gopher Tortoise | <span style="color: green;">★</span> Sherman's Fox Squirrel       |
| <span style="color: purple;">■</span> Giant Orchid   | <span style="color: blue;">●</span> Southeastern American Kestrel |

#### REFERENCE

Substations and Right-of-Way: Progress Energy Florida & Golder Associates Inc., 2009; Roads: Florida Department of Transportation, 2010; Railroads: FDEP, 1992; Listed Species Data: FNAI, 2006; Golder Observed Species, 2009; Aerials: FDOT & Progress Energy, 2009

1,000 500 0 1,000  
Feet

NOTE: Please refer to Index page for the portions of the Citrus - Brookridge line that are within Wood Stork Core Foraging Areas.

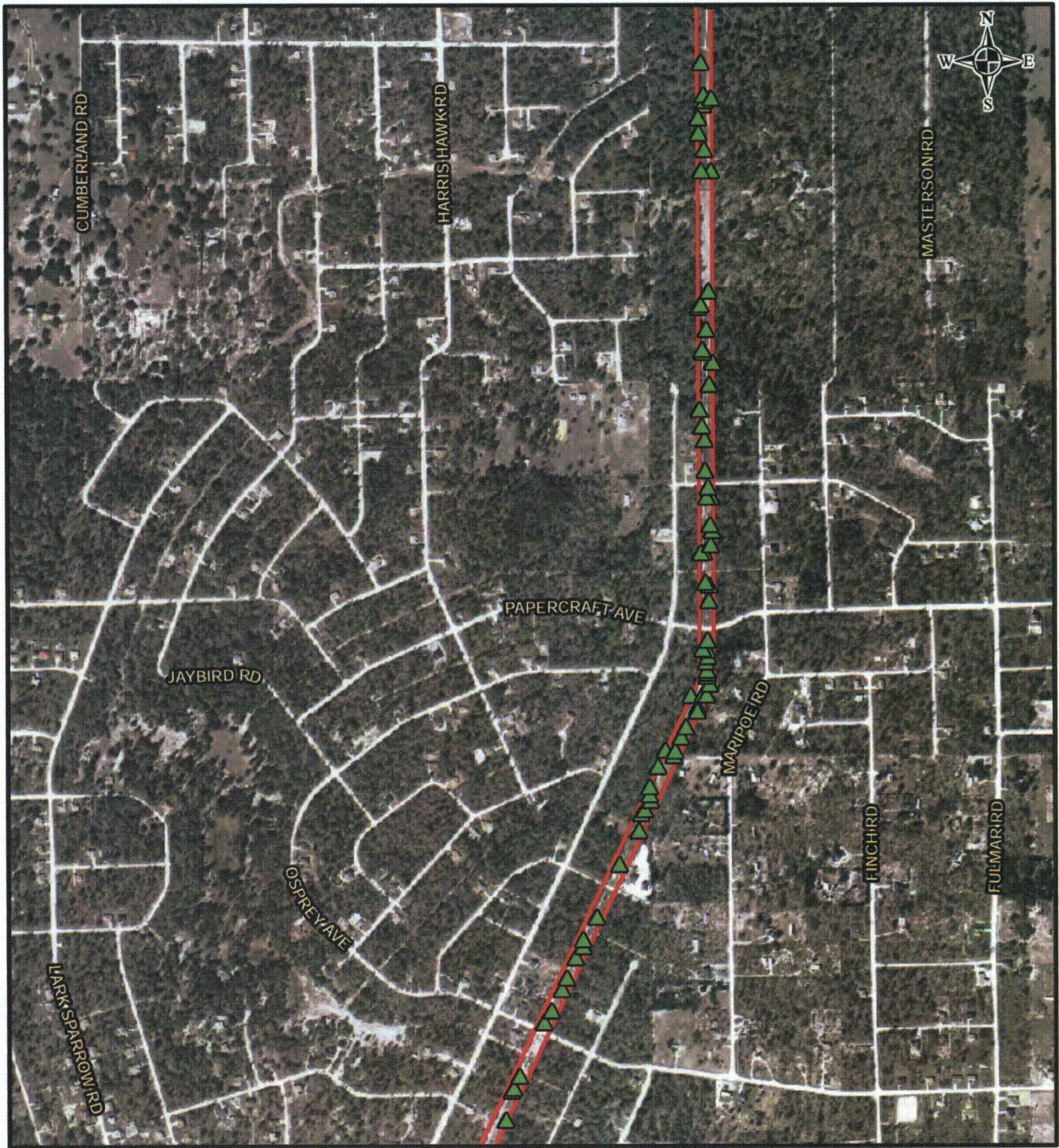
PROGRESS ENERGY FLORIDA  
LEVY NUCLEAR PLANT

CITRUS - BROOKRIDGE  
LISTED SPECIES MAP



MXD File No. 093-895478006	SCALE AS SHOWN	REV. 0
DESIGN DLH 24 Sept 2009	<b>FIGURE 6</b> <b>PAGE 17 OF 20</b>	
GIS DLH 07 Apr 2010		
CHECK SAR 07 Apr 2010		
REVIEW KB 07 Apr 2010		





#### LEGEND

- CB Right-of-Way    ▲ Florida Natural Areas Inventory Occurrence

#### GOLDER OBSERVED SPECIES

- ▲ Gopher Tortoise    ★ Sherman's Fox Squirrel  
■ Giant Orchid    ● Southeastern American Kestrel

#### REFERENCE

Substations and Right-of-Way: Progress Energy Florida & Golder Associates Inc., 2009; Roads: Florida Department of Transportation, 2010; Railroads: FDEP, 1992; Listed Species Data: FNAI, 2006; Golder Observed Species, 2009; Aerials: FDOT & Progress Energy, 2009

1,000 500 0 1,000  
Feet

NOTE: Please refer to Index page for the portions of the Citrus - Brookridge line that are within Wood Stork Core Foraging Areas.

PROGRESS ENERGY FLORIDA  
LEVY NUCLEAR PLANT

#### CITRUS - BROOKRIDGE LISTED SPECIES MAP



MXD File No. 093-895471006			SCALE AS SHOWN	REV. 0
DESIGN	DLH	24 Sept 2009	<b>FIGURE 6</b> <b>PAGE 18 OF 20</b>	
GIS	DLH	07 Apr 2010		
CHECK	SAR	07 Apr 2010		
REVIEW	KB	07 Apr 2010		





#### LEGEND

CB Right-of-Way ▲ Florida Natural Areas Inventory Occurrence

#### GOLDER OBSERVED SPECIES

- |  |   |
|--|---|
| <span style="color: green;">▲</span> Gopher Tortoise | <span style="color: green;">★</span> Sherman's Fox Squirrel       |
| <span style="color: purple;">■</span> Giant Orchid   | <span style="color: blue;">●</span> Southeastern American Kestrel |

#### REFERENCE

Substations and Right-of-Way: Progress Energy Florida & Golder Associates Inc., 2009; Roads: Florida Department of Transportation, 2010; Railroads: FDEP, 1992; Listed Species Data: FNAI, 2006; Golder Observed Species, 2009; Aerials: FDOT & Progress Energy, 2009

1,000 500 0 1,000  
Feet

NOTE: Please refer to Index page for the portions of the Citrus - Brookridge line that are within Wood Stork Core Foraging Areas.

PROGRESS ENERGY FLORIDA  
LEVY NUCLEAR PLANT

CITRUS - BROOKRIDGE  
LISTED SPECIES MAP

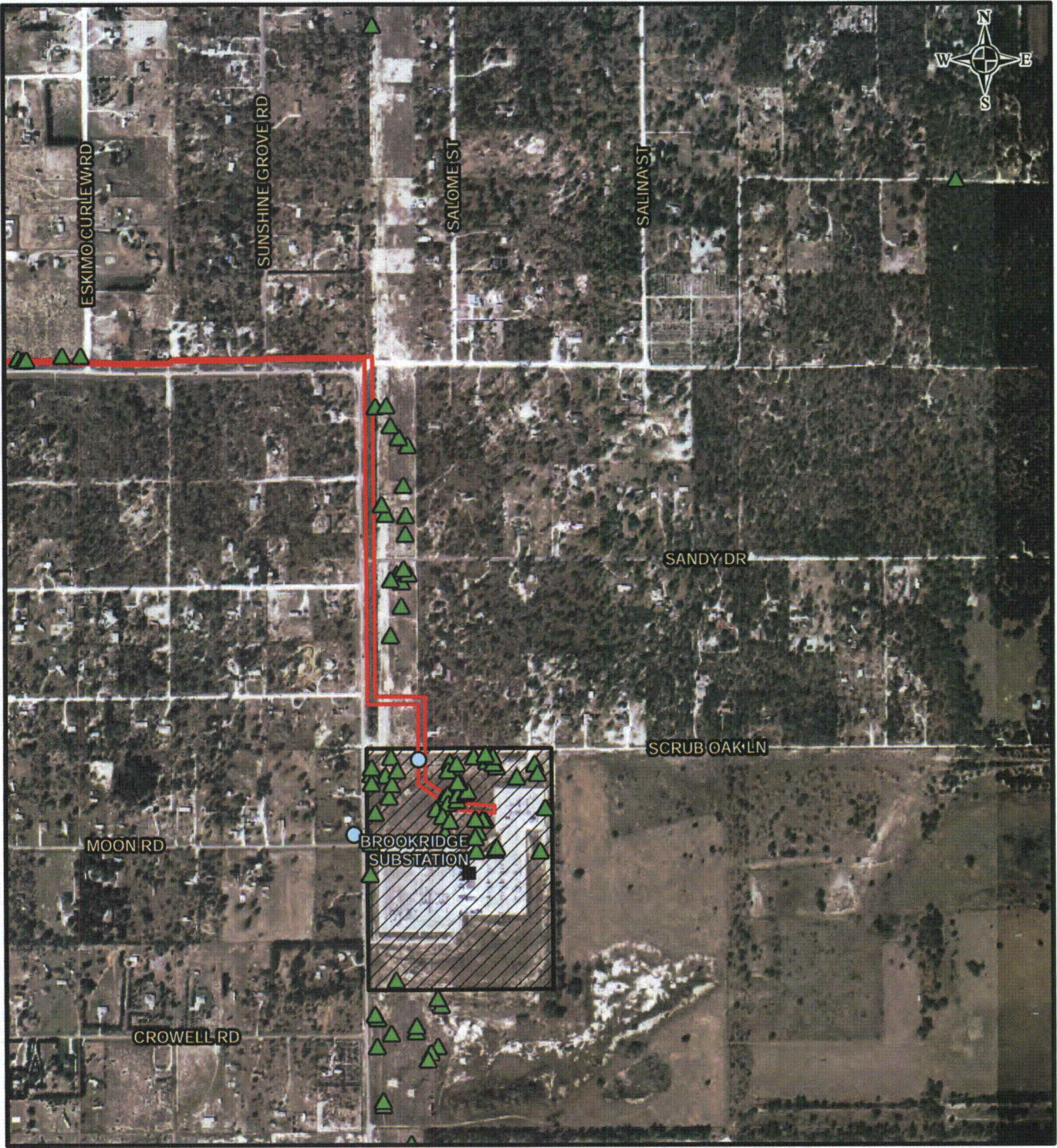


MXD File No. 093-895471006		SCALE AS SHOWN	REV. 0
DESIGN	DLH	24 Sept 2009	
GIS	DLH	07 Apr 2010	
CHECK	SAR	07 Apr 2010	
REVIEW	KB	07 Apr 2010	

**FIGURE 6**  
**PAGE 19 OF 20**



F:\PROJECTS\2009\093-89547\PECF Wetland Delineation T&E Surveys\1 - ERP CB Route\GIS\MXD\093-89547\006 FNAI.mxd

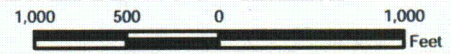


**LEGEND**

CB Right-of-Way    Florida Natural Areas Inventory Occurrence

**GOLDER OBSERVED SPECIES**

Gopher Tortoise    Sherman's Fox Squirrel  
 Giant Orchid    Southeastern American Kestrel



NOTE: Please refer to Index page for the portions of the Citrus - Brookridge line that are within Wood Stork Core Foraging Areas.

**REFERENCE**

Substations and Right-of-Way: Progress Energy Florida & Golder Associates Inc., 2009; Roads: Florida Department of Transportation, 2010; Railroads: FDEP, 1992; Listed Species Data: FNAI, 2006; Golder Observed Species, 2009; Aerials: FDOT & Progress Energy, 2009

**PROGRESS ENERGY FLORIDA  
LEVY NUCLEAR PLANT**

**CITRUS - BROOKRIDGE  
LISTED SPECIES MAP**

MXD File No. 093-89547/006			SCALE AS SHOWN	REV. 0
DESIGN	DLH	24 Sept 2009	<b>FIGURE 6</b> <b>PAGE 20 OF 20</b>	
GIS	DLH	07 Apr 2010		
CHECK	SAR	07 Apr 2010		
REVIEW	KB	07 Apr 2010		

**Progress Energy**