



LEGEND

PHP Right-of-Way

FLOOD ZONE DESCRIPTIONS

- A 100-yr Floodplain
(No Base Flood Elevations
have been determined)
- AE 100-yr Floodplain
(Base Flood Elevations
have been determined)
- VE 100-yr Floodplain with velocity (wave action)

REFERENCE

Substations and Right-of-Way: Progress Energy Florida & Golder Associates Inc., 2009; Roads: Florida Department of Transportation, 2010; Railroads: FDEP, 1992; Flood Zones: FEMA, Polk County - 1996; Pinellas & Hillsborough County - 2009; Aerials: ESRI, 2008

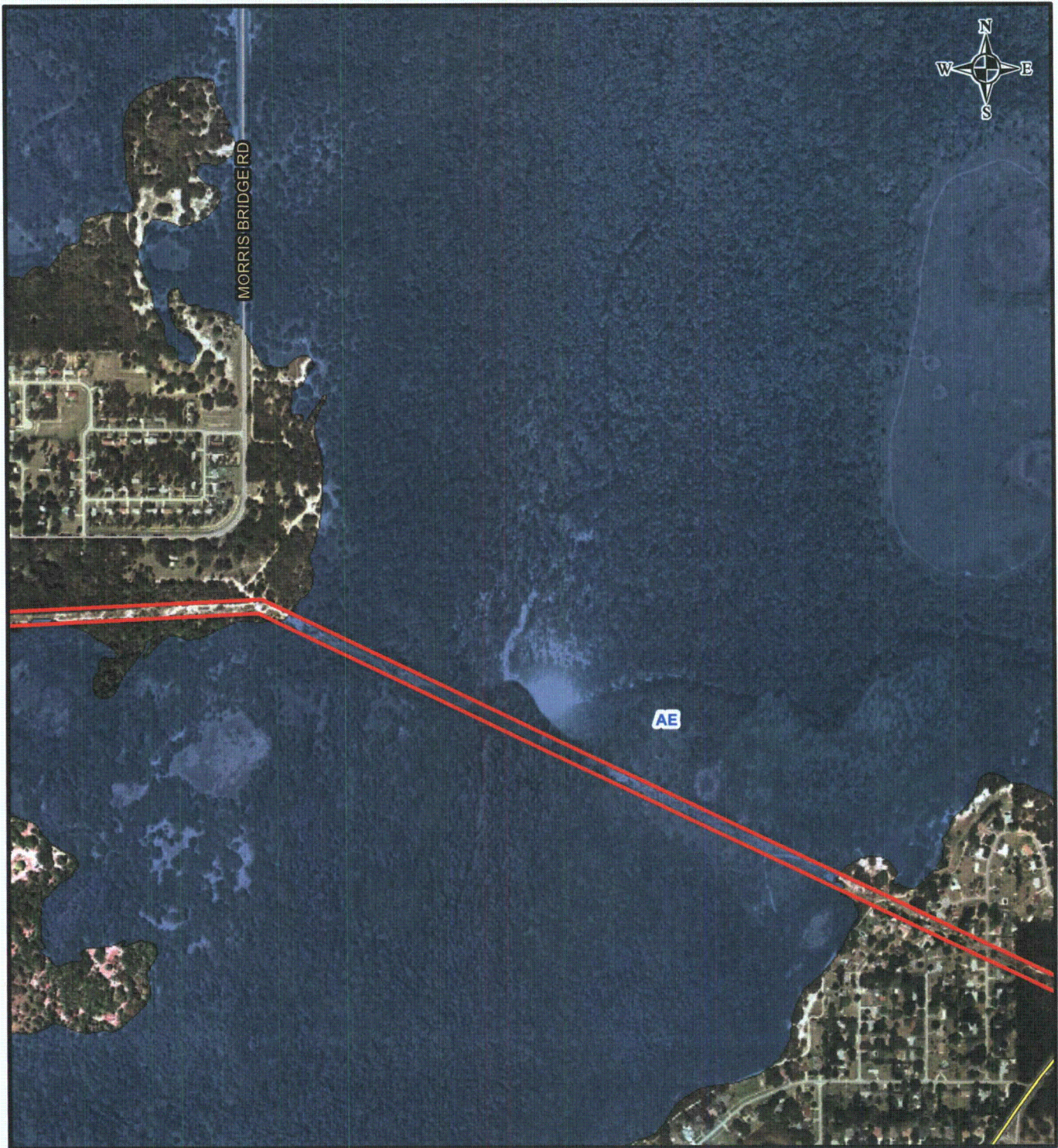
1,000 500 0 1,000
Feet

PROGRESS ENERGY FLORIDA
LEVY NUCLEAR PLANT

POLK - HILLSBOROUGH - PINELLAS FEMA 100 YEAR FLOODPLAIN MAP



MXD File No. 093-89547K007			SCALE AS SHOWN	REV. 0
DESIGN	DLH	16 Nov 2009	FIGURE 7 PAGE 18 OF 34	
GIS	DLH	16 Feb 2010		
CHECK	SAR	16 Feb 2010		
REVIEW	KB	16 Feb 2010		



LEGEND



PHP Right-of-Way

FLOOD ZONE DESCRIPTIONS



A 100-yr Floodplain
(No Base Flood Elevations
have been determined)



AE 100-yr Floodplain
(Base Flood Elevations
have been determined)



VE 100-yr Floodplain with velocity (wave action)

REFERENCE

Substations and Right-of-Way: Progress Energy Florida & Golder Associates Inc., 2009; Roads: Florida Department of Transportation, 2010; Railroads: FDEP, 1992; Flood Zones: FEMA, Polk County - 1996; Pinellas & Hillsborough County - 2009; Aerials: ESRI, 2008

PROGRESS ENERGY FLORIDA
LEVY NUCLEAR PLANT

POLK - HILLSBOROUGH - PINELLAS FEMA 100 YEAR FLOODPLAIN MAP

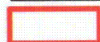


Progress Energy

MXD File No. 093-89547K007			SCALE AS SHOWN	REV. 0
DESIGN	DLH	16 Nov 2009	FIGURE 7 PAGE 19 OF 34	
GIS	DLH	16 Feb 2010		
CHECK	SAR	16 Feb 2010		
REVIEW	KB	16 Feb 2010		



LEGEND



PHP Right-of-Way

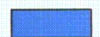
FLOOD ZONE DESCRIPTIONS



A 100-yr Floodplain
(No Base Flood Elevations
have been determined)



AE 100-yr Floodplain
(Base Flood Elevations
have been determined)



VE 100-yr Floodplain with velocity (wave action)

REFERENCE

Substations and Right-of-Way: Progress Energy Florida & Golder Associates Inc., 2009; Roads: Florida Department of Transportation, 2010; Railroads: FDEP, 1992; Flood Zones: FEMA, Polk County - 1996; Pinellas & Hillsborough County - 2009; Aerials: ESRI, 2008

1,000 500 0 1,000
Feet

PROGRESS ENERGY FLORIDA
LEVY NUCLEAR PLANT

POLK - HILLSBOROUGH - PINELLAS FEMA 100 YEAR FLOODPLAIN MAP



MXD File No: 093-89547K007			SCALE AS SHOWN	REV. 0
DESIGN	DLH	16 Nov 2009	FIGURE 7 PAGE 20 OF 34	
GIS	DLH	16 Feb 2010		
CHECK	SAR	16 Feb 2010		
REVIEW	KB	16 Feb 2010		



LEGEND

PHP Right-of-Way

FLOOD ZONE DESCRIPTIONS

- A 100-yr Floodplain
(No Base Flood Elevations
have been determined)
- AE 100-yr Floodplain
(Base Flood Elevations
have been determined)
- VE 100-yr Floodplain with velocity (wave action)

REFERENCE

Substations and Right-of-Way: Progress Energy Florida & Golder Associates Inc., 2009; Roads: Florida Department of Transportation, 2010; Railroads: FDEP, 1992; Flood Zones: FEMA, Polk County - 1996; Pinellas & Hillsborough County - 2009; Aerials: ESRI, 2008

PROGRESS ENERGY FLORIDA
LEVY NUCLEAR PLANT

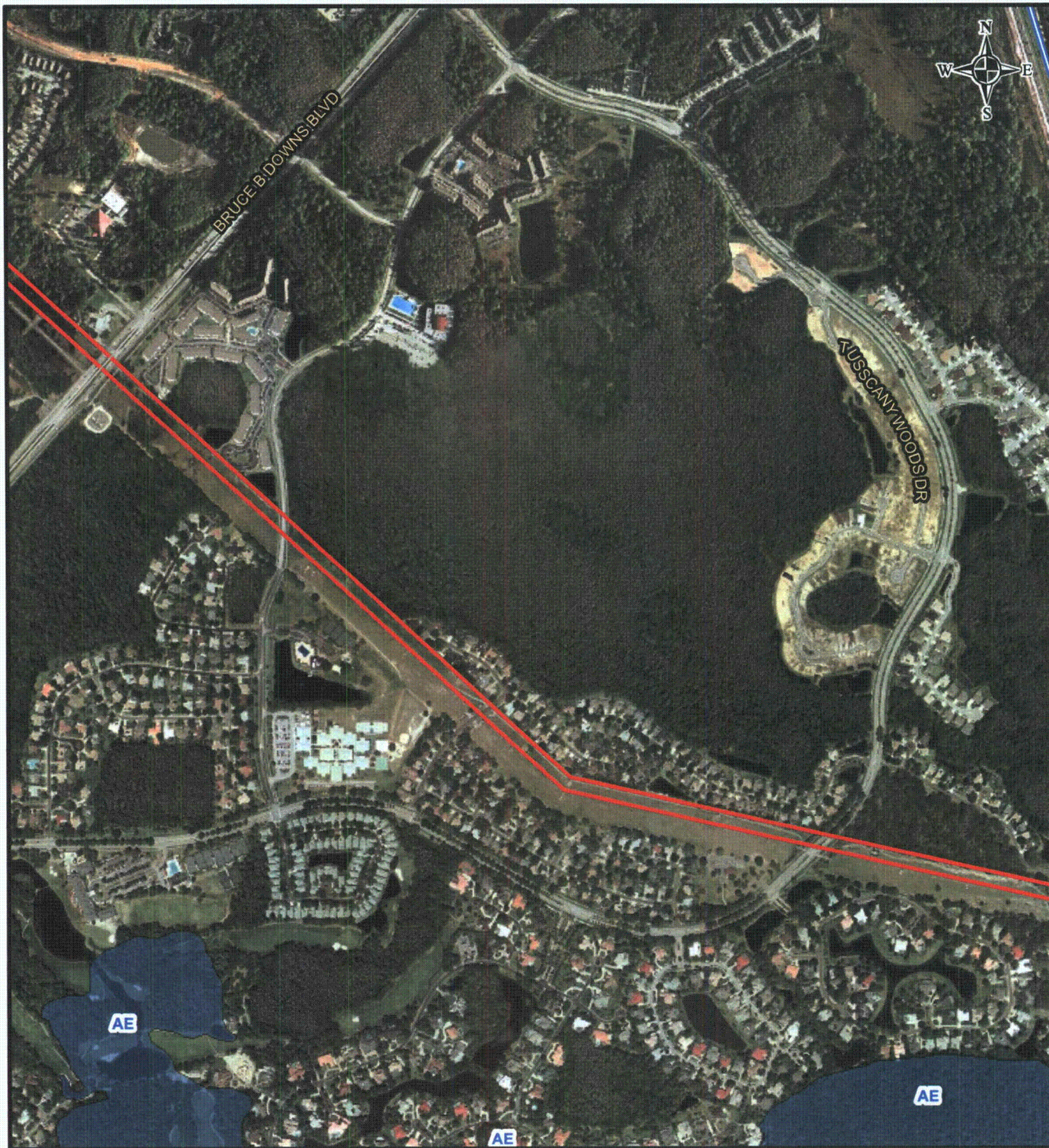
**POLK - HILLSBOROUGH - PINELLAS
FEMA 100 YEAR FLOODPLAIN MAP**



Progress Energy

MXD File No. 093-89547K007				SCALE AS SHOWN	REV. 0
DESIGN	DLH	16 Nov 2009			
GIS	DLH	16 Feb 2010			
CHECK	SAR	16 Feb 2010			
REVIEW	KB	16 Feb 2010			

FIGURE 7
PAGE 21 OF 34



LEGEND

PHP Right-of-Way

FLOOD ZONE DESCRIPTIONS

- A 100-yr Floodplain
(No Base Flood Elevations
have been determined)
- AE 100-yr Floodplain
(Base Flood Elevations
have been determined)
- VE 100-yr Floodplain with velocity (wave action)

REFERENCE

Substations and Right-of-Way: Progress Energy Florida & Golder Associates Inc., 2009; Roads: Florida Department of Transportation, 2010; Railroads: FDEP, 1992; Flood Zones: FEMA, Polk County - 1996; Pinellas & Hillsborough County - 2009; Aerials: ESRI, 2008

PROGRESS ENERGY FLORIDA
LEVY NUCLEAR PLANT

POLK - HILLSBOROUGH - PINELLAS FEMA 100 YEAR FLOODPLAIN MAP



MXD File No: 093-89547K007			SCALE AS SHOWN	REV. 0
DESIGN	DLH	16 Nov 2009	FIGURE 7 PAGE 22 OF 34	
GIS	DLH	16 Feb 2010		
CHECK	SAR	16 Feb 2010		
REVIEW	KB	16 Feb 2010		



LEGEND

PHP Right-of-Way

FLOOD ZONE DESCRIPTIONS

- A 100-yr Floodplain
(No Base Flood Elevations
have been determined)
- AE 100-yr Floodplain
(Base Flood Elevations
have been determined)
- VE 100-yr Floodplain with velocity (wave action)

REFERENCE

Substations and Right-of-Way: Progress Energy Florida & Golder Associates Inc., 2009; Roads: Florida Department of Transportation, 2010; Railroads: FDEP, 1992; Flood Zones: FEMA, Polk County - 1996; Pinellas & Hillsborough County - 2009; Aerials: ESRI, 2008

PROGRESS ENERGY FLORIDA
LEVY NUCLEAR PLANT

POLK - HILLSBOROUGH - PINELLAS FEMA 100 YEAR FLOODPLAIN MAP



Progress Energy

MXD File No. 093-89547K007			SCALE AS SHOWN	REV. 0
DESIGN	DLH	16 Nov 2009	FIGURE 7 PAGE 23 OF 34	
GIS	DLH	16 Feb 2010		
CHECK	SAR	16 Feb 2010		
REVIEW	KB	16 Feb 2010		

FIGURE 7
PAGE 23 OF 34



LEGEND

 PHP Right-of-Way

FLOOD ZONE DESCRIPTIONS

- A 100-yr Floodplain
(No Base Flood Elevations
have been determined)
- AE 100-yr Floodplain
(Base Flood Elevations
have been determined)
- VE 100-yr Floodplain with velocity (wave action)

REFERENCE

Substations and Right-of-Way: Progress Energy Florida & Golder Associates Inc., 2009; Roads: Florida Department of Transportation, 2010; Railroads: FDEP, 1992; Flood Zones: FEMA, Polk County - 1996; Pinellas & Hillsborough County - 2009; Aerials: ESRI, 2008

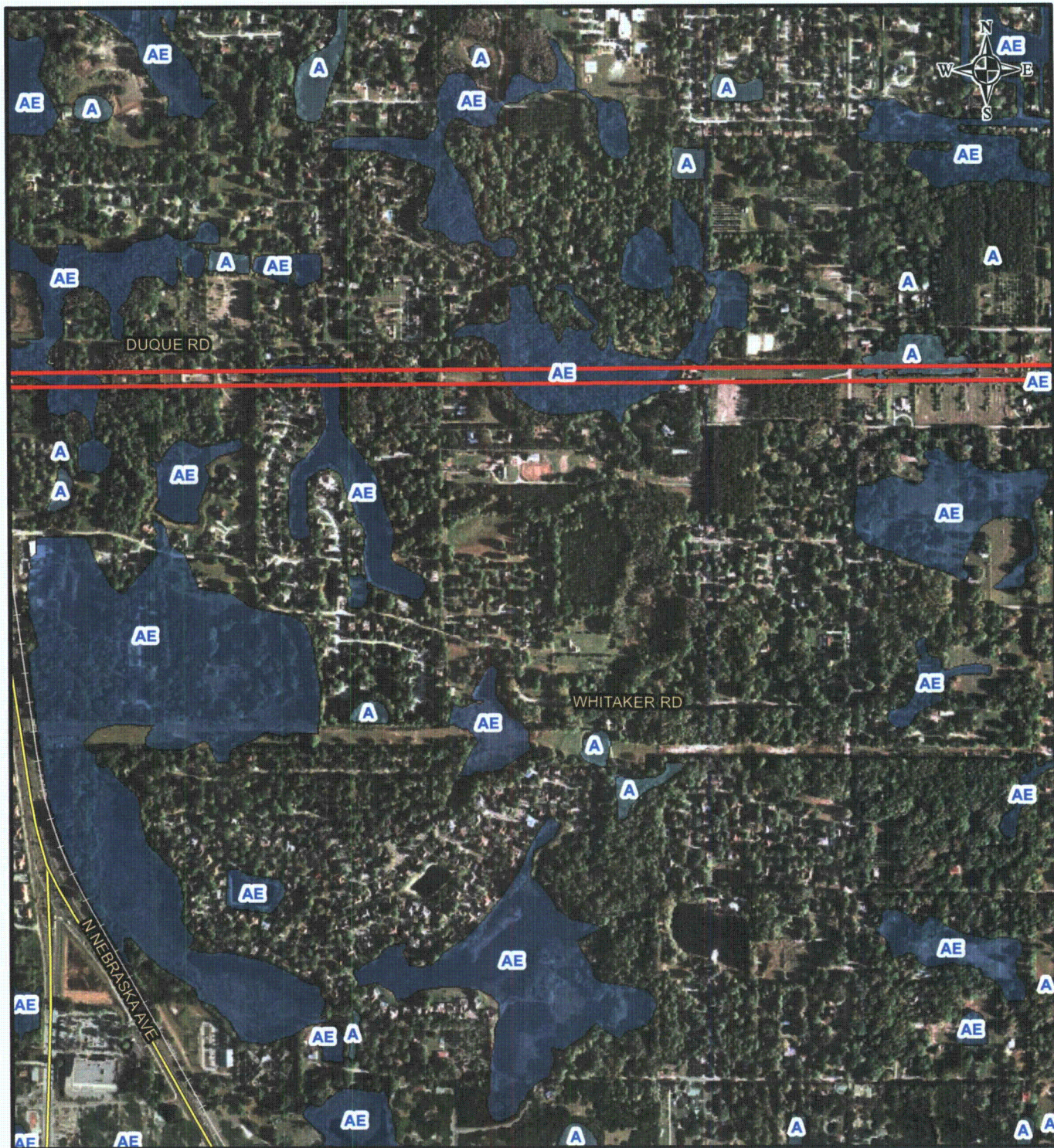
1,000 500 0 1,000
Feet

PROGRESS ENERGY FLORIDA
LEVY NUCLEAR PLANT

POLK - HILLSBOROUGH - PINELLAS FEMA 100 YEAR FLOODPLAIN MAP



MKD File No. 093-89547K007			SCALE AS SHOWN	REV. 0
DESIGN	DLH	16 Nov 2009	FIGURE 7 PAGE 24 OF 34	
GIS	DLH	16 Feb 2010		
CHECK	SAR	16 Feb 2010		
REVIEW	KB	16 Feb 2010		



LEGEND

 PHP Right-of-Way
FLOOD ZONE DESCRIPTIONS

- A 100-yr Floodplain
(No Base Flood Elevations
have been determined)
- AE 100-yr Floodplain
(Base Flood Elevations
have been determined)
- VE 100-yr Floodplain with velocity (wave action)

REFERENCE

Substations and Right-of-Way: Progress Energy Florida & Golder Associates Inc., 2009; Roads: Florida Department of Transportation, 2010; Railroads: FDEP, 1992; Flood Zones: FEMA, Polk County - 1996; Pinellas & Hillsborough County - 2009; Aerials: ESRI, 2008

1,000 500 0 1,000
 Feet

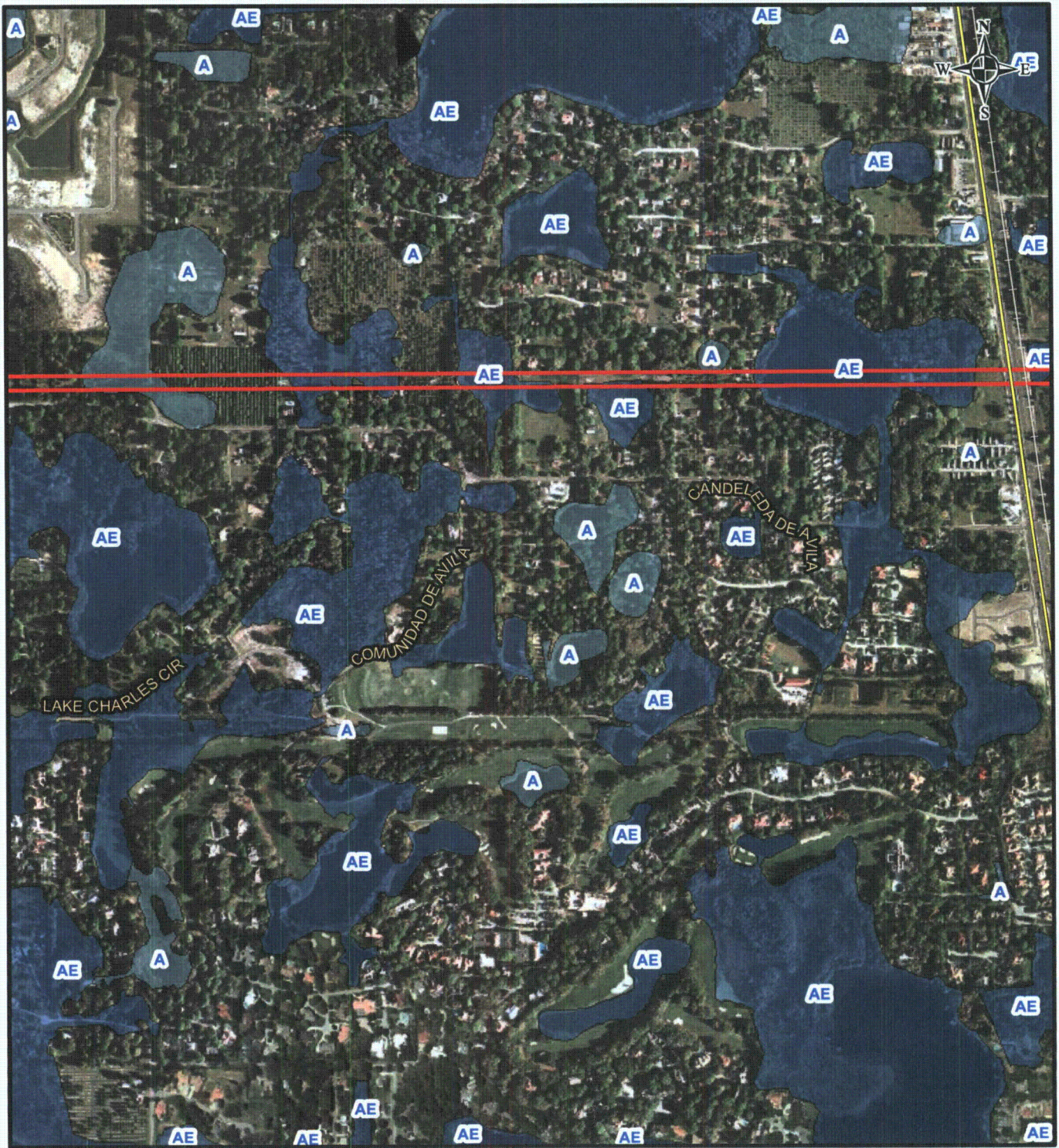
PROGRESS ENERGY FLORIDA
 LEVY NUCLEAR PLANT

POLK - HILLSBOROUGH - PINELLAS FEMA 100 YEAR FLOODPLAIN MAP



Progress Energy

MXD File No. 093-89547K007			SCALE AS SHOWN	REV. 0
DESIGN	DLH	16 Nov 2009	FIGURE 7	PAGE 25 OF 34
GIS	DLH	16 Feb 2010		
CHECK	SAR	16 Feb 2010		
REVIEW	KB	16 Feb 2010		



LEGEND



PHP Right-of-Way

FLOOD ZONE DESCRIPTIONS



A 100-yr Floodplain
(No Base Flood Elevations
have been determined)



AE 100-yr Floodplain
(Base Flood Elevations
have been determined)



VE 100-yr Floodplain with velocity (wave action)

REFERENCE

Substations and Right-of-Way: Progress Energy Florida & Golder Associates Inc., 2009; Roads: Florida Department of Transportation, 2010; Railroads: FDEP, 1992; Flood Zones: FEMA, Polk County - 1996; Pinellas & Hillsborough County - 2009; Aerials: ESRI, 2008

1,000 500 0 1,000
Feet

PROGRESS ENERGY FLORIDA
LEVY NUCLEAR PLANT

POLK - HILLSBOROUGH - PINELLAS FEMA 100 YEAR FLOODPLAIN MAP

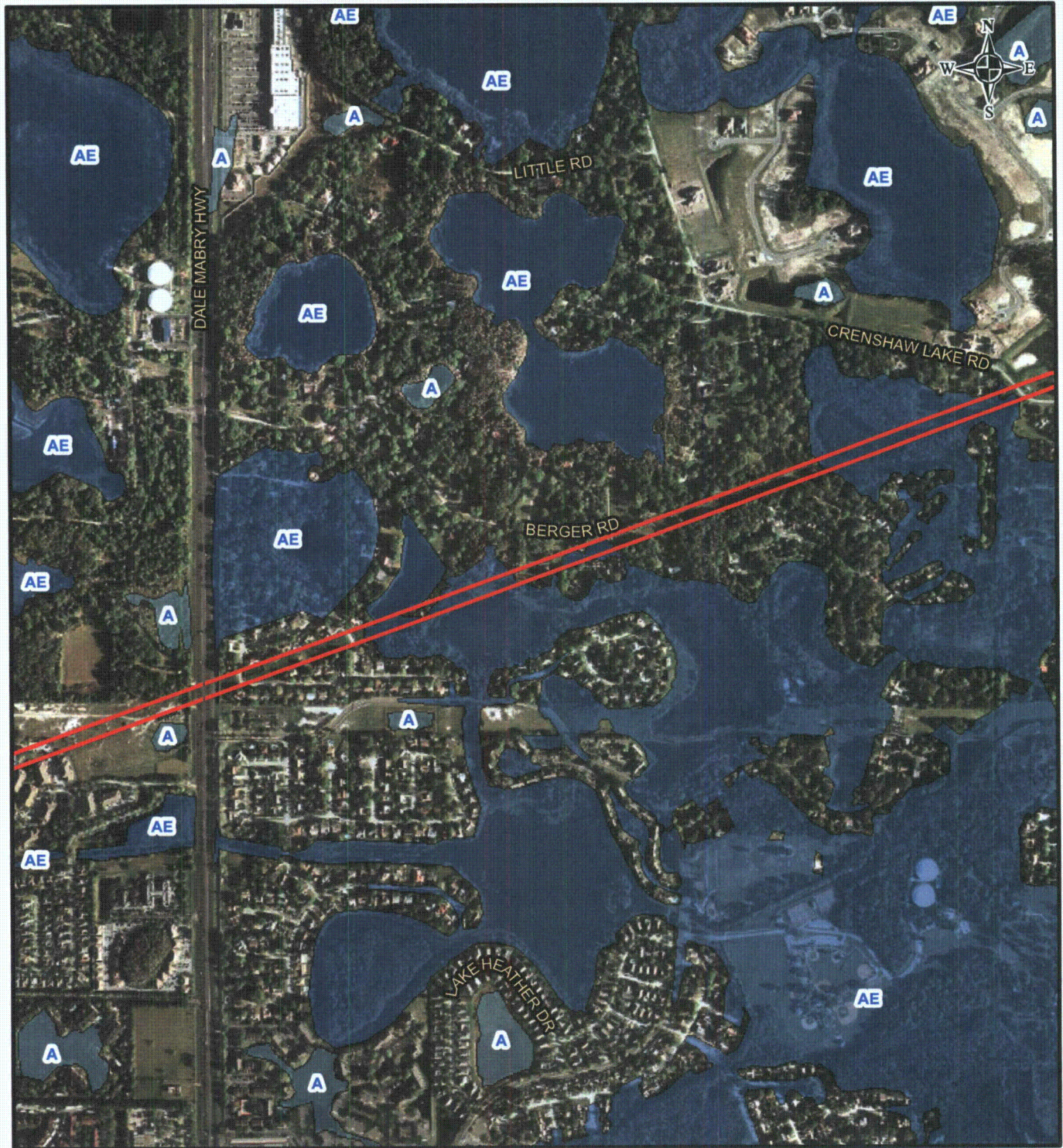


Progress Energy

MxD File No: 063-89547K007				SCALE AS SHOWN	REV. 0
DESIGN	DLH	16 Nov 2009			
GIS	DLH	16 Feb 2010			
CHECK	SAR	16 Feb 2010			
REVIEW	KB	16 Feb 2010			

FIGURE 7

PAGE 26 OF 34



LEGEND

PHP Right-of-Way

FLOOD ZONE DESCRIPTIONS

- A 100-yr Floodplain
(No Base Flood Elevations
have been determined)
- AE 100-yr Floodplain
(Base Flood Elevations
have been determined)
- VE 100-yr Floodplain with velocity (wave action)

REFERENCE

Substations and Right-of-Way: Progress Energy Florida & Golder Associates Inc., 2009; Roads: Florida Department of Transportation, 2010; Railroads: FDEP, 1992; Flood Zones: FEMA, Polk County - 1996; Pinellas & Hillsborough County - 2009; Aerials: ESRI, 2008

1,000 500 0 1,000
Feet

PROGRESS ENERGY FLORIDA
LEVY NUCLEAR PLANT

POLK - HILLSBOROUGH - PINELLAS FEMA 100 YEAR FLOODPLAIN MAP



MXD File No: 093-89547K007			SCALE AS SHOWN	REV. 0
DESIGN	DLH	16 Nov 2009	FIGURE 7 PAGE 27 OF 34	
GIS	DLH	16 Feb 2010		
CHECK	SAR	16 Feb 2010		
REVIEW	KB	16 Feb 2010		



LEGEND



PHP Right-of-Way

FLOOD ZONE DESCRIPTIONS



A 100-yr Floodplain
(No Base Flood Elevations
have been determined)



AE 100-yr Floodplain
(Base Flood Elevations
have been determined)



VE 100-yr Floodplain with velocity (wave action)

REFERENCE

Substations and Right-of-Way: Progress Energy Florida & Golder Associates Inc., 2009; Roads: Florida Department of Transportation, 2010; Railroads: FDEP, 1992; Flood Zones: FEMA, Polk County - 1996; Pinellas & Hillsborough County - 2009; Aerials: ESRI, 2008

1,000 500 0 1,000
Feet

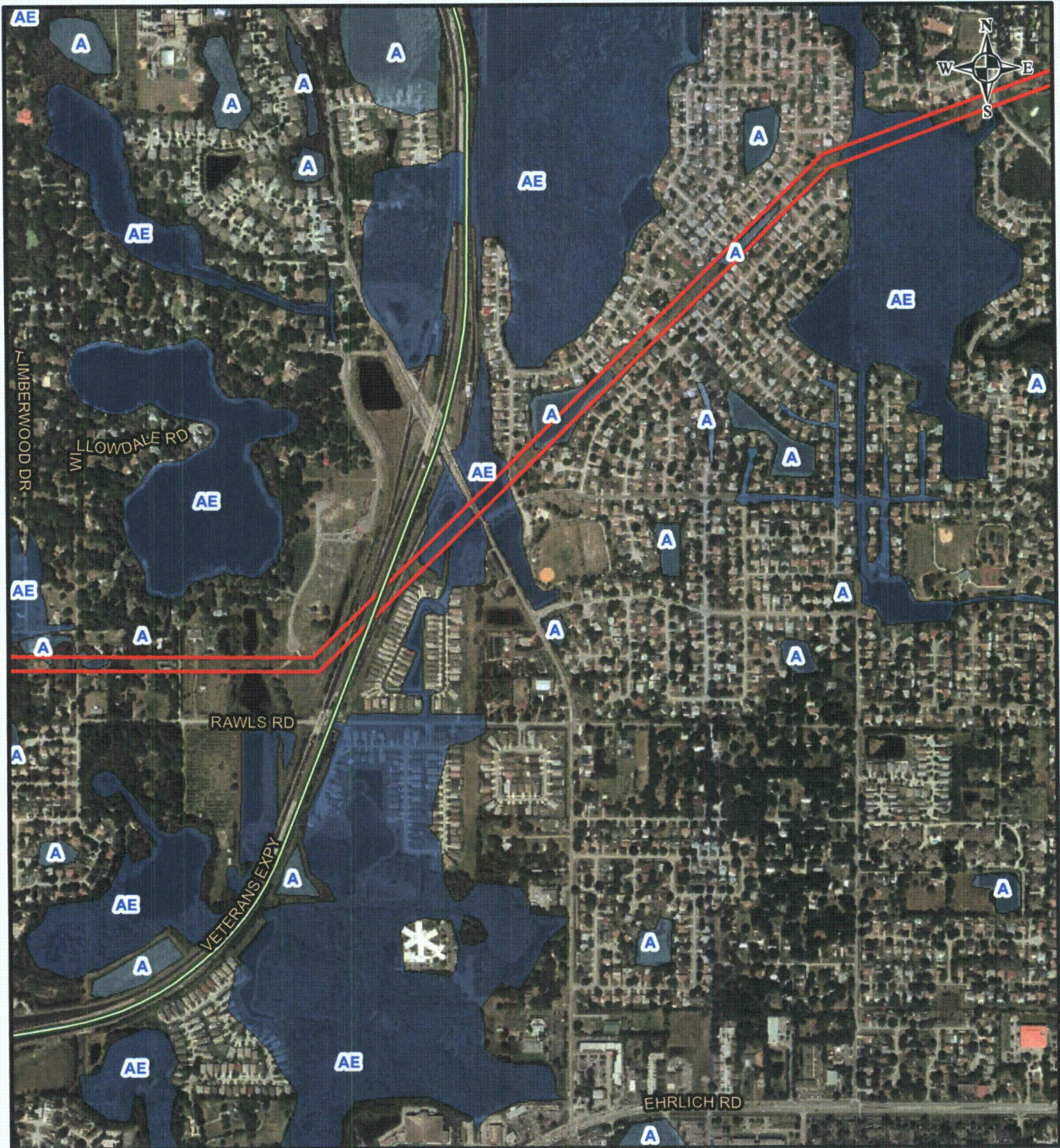
PROGRESS ENERGY FLORIDA
LEVY NUCLEAR PLANT

POLK - HILLSBOROUGH - PINELLAS FEMA 100 YEAR FLOODPLAIN MAP



Progress Energy

MXD File No: 093-89547K007			SCALE AS SHOWN	REV. 0
DESIGN	DLH	16 Nov 2009	FIGURE 7 PAGE 28 OF 34	
GIS	DLH	16 Feb 2010		
CHECK	SAR	16 Feb 2010		
REVIEW	KB	16 Feb 2010		



LEGEND

 PHP Right-of-Way

FLOOD ZONE DESCRIPTIONS

- A 100-yr Floodplain
(No Base Flood Elevations
have been determined)
- AE 100-yr Floodplain
(Base Flood Elevations
have been determined)
- VE 100-yr Floodplain with velocity (wave action)

REFERENCE

Substations and Right-of-Way: Progress Energy Florida & Golder Associates Inc., 2009; Roads: Florida Department of Transportation, 2010; Railroads: FDEP, 1992; Flood Zones: FEMA, Polk County - 1996; Pinellas & Hillsborough County - 2009; Aerials: ESRI, 2008.

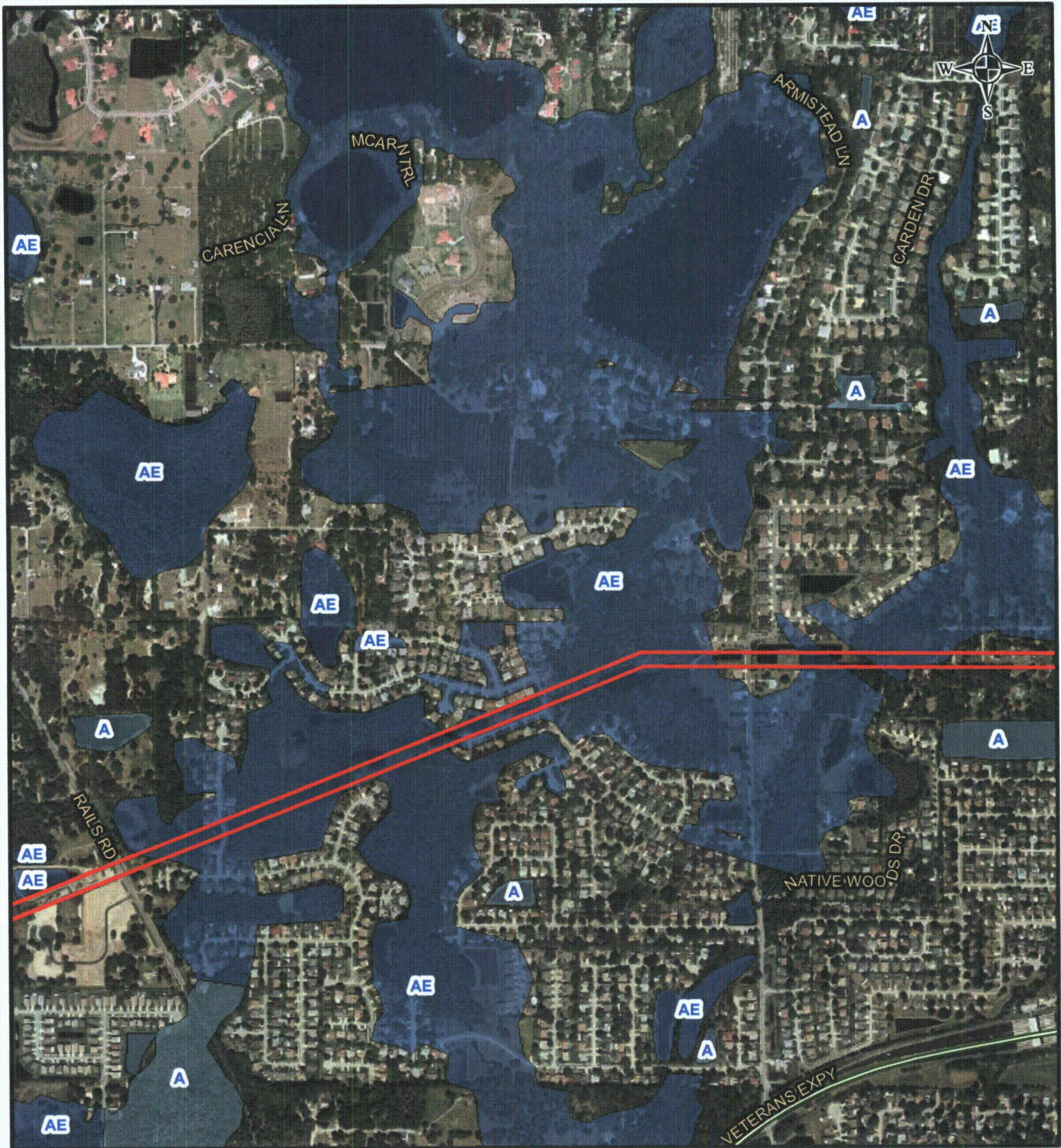
PROGRESS ENERGY FLORIDA
LEVY NUCLEAR PLANT

POLK - HILLSBOROUGH - PINELLAS FEMA 100 YEAR FLOODPLAIN MAP



Progress Energy

MXD File No. 093-89547K007			SCALE AS SHOWN	REV 0
DESIGN	DLH	16 Nov 2009	FIGURE 7 PAGE 29 OF 34	
GIS	DLH	16 Feb 2010		
CHECK	SAR	16 Feb 2010		
REVIEW	KB	16 Feb 2010		



LEGEND

 PHP Right-of-Way

FLOOD ZONE DESCRIPTIONS

- A 100-yr Floodplain
(No Base Flood Elevations
have been determined)
- AE 100-yr Floodplain
(Base Flood Elevations
have been determined)
- VE 100-yr Floodplain with velocity (wave action)

REFERENCE

Substations and Right-of-Way: Progress Energy Florida & Golder Associates Inc., 2009; Roads: Florida Department of Transportation, 2010; Railroads: FDEP, 1992; Flood Zones: FEMA, Polk County - 1996; Pinellas & Hillsborough County - 2009; Aerials: ESRI, 2008

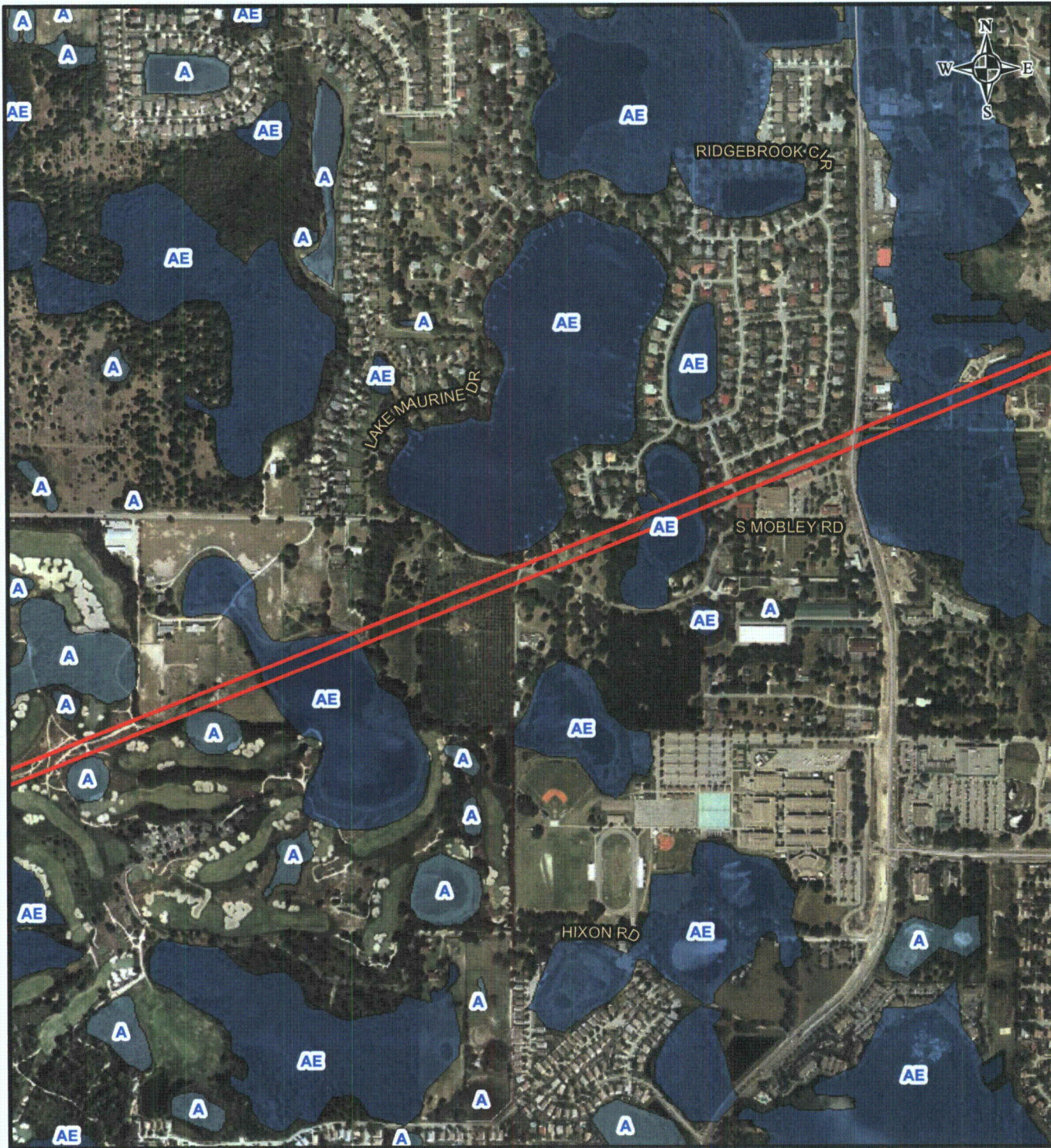
1,000 500 0 1,000
Feet

PROGRESS ENERGY FLORIDA
LEVY NUCLEAR PLANT

POLK - HILLSBOROUGH - PINELLAS FEMA 100 YEAR FLOODPLAIN MAP



MXD File No. 093-89547K007			SCALE AS SHOWN	REV 0
DESIGN	DLH	16 Nov 2009	FIGURE 7 PAGE 30 OF 34	
GIS	DLH	16 Feb 2010		
CHECK	SAR	16 Feb 2010		
REVIEW	KB	16 Feb 2010		



LEGEND



PHP Right-of-Way

FLOOD ZONE DESCRIPTIONS



A 100-yr Floodplain
(No Base Flood Elevations
have been determined)



AE 100-yr Floodplain
(Base Flood Elevations
have been determined)



VE 100-yr Floodplain with velocity (wave action)

REFERENCE

Substations and Right-of-Way: Progress Energy Florida & Golder Associates Inc., 2009; Roads: Florida Department of Transportation, 2010; Railroads: FDEP, 1992; Flood Zones: FEMA, Polk County - 1996; Pinellas & Hillsborough County - 2009; Aerials: ESRI, 2008

1,000 500 0 1,000
Feet

PROGRESS ENERGY FLORIDA
LEVY NUCLEAR PLANT

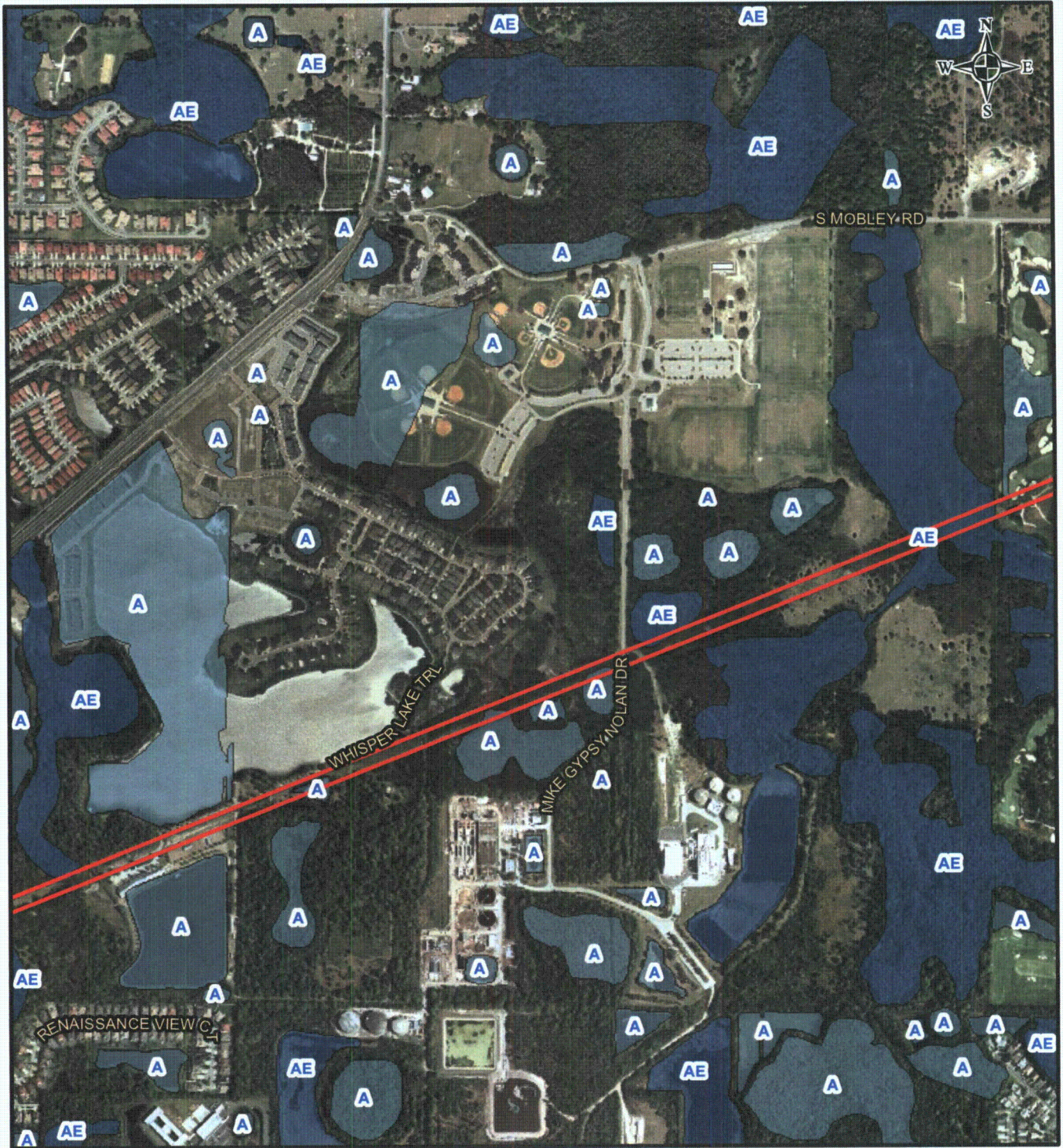
POLK - HILLSBOROUGH - PINELLAS FEMA 100 YEAR FLOODPLAIN MAP



MxD File No. 093-89547K007		SCALE AS SHOWN	REV. 0
DESIGN	DLH	16 Nov 2009	
GIS	DLH	16 Feb 2010	
CHECK	SAR	16 Feb 2010	
REVIEW	KB	16 Feb 2010	

FIGURE 7

PAGE 31 OF 34



LEGEND

PHP Right-of-Way

FLOOD ZONE DESCRIPTIONS

- A 100-yr Floodplain
(No Base Flood Elevations
have been determined)
- AE 100-yr Floodplain
(Base Flood Elevations
have been determined)
- VE 100-yr Floodplain with velocity (wave action)

REFERENCE

Substations and Right-of-Way: Progress Energy Florida & Golder Associates Inc., 2009; Roads: Florida Department of Transportation, 2010; Railroads: FDEP, 1992; Flood Zones: FEMA, Polk County - 1996; Pinellas & Hillsborough County - 2009; Aerials: ESRI, 2008

1,000 500 0 1,000
Feet

PROGRESS ENERGY FLORIDA
LEVY NUCLEAR PLANT

POLK - HILLSBOROUGH - PINELLAS FEMA 100 YEAR FLOODPLAIN MAP



MXD File No: 093-89547K007		SCALE AS SHOWN	REV. 0
DESIGN	DLH	16 Nov 2009	FIGURE 7 PAGE 32 OF 34
GIS	DLH	16 Feb 2010	
CHECK	SAR	16 Feb 2010	
REVIEW	KB	16 Feb 2010	

F:\PROJECTS\2009\PROJ093-89547\FEED\Flood Delineation T&E Surveys\K - ERP PHP Route\GIS\MXD\093-89547\K007 FEMA.mxd



LEGEND

PHP Right-of-Way

FLOOD ZONE DESCRIPTIONS

- A 100-yr Floodplain
(No Base Flood Elevations
have been determined)
- AE 100-yr Floodplain
(Base Flood Elevations
have been determined)
- VE 100-yr Floodplain with velocity (wave action)

REFERENCE

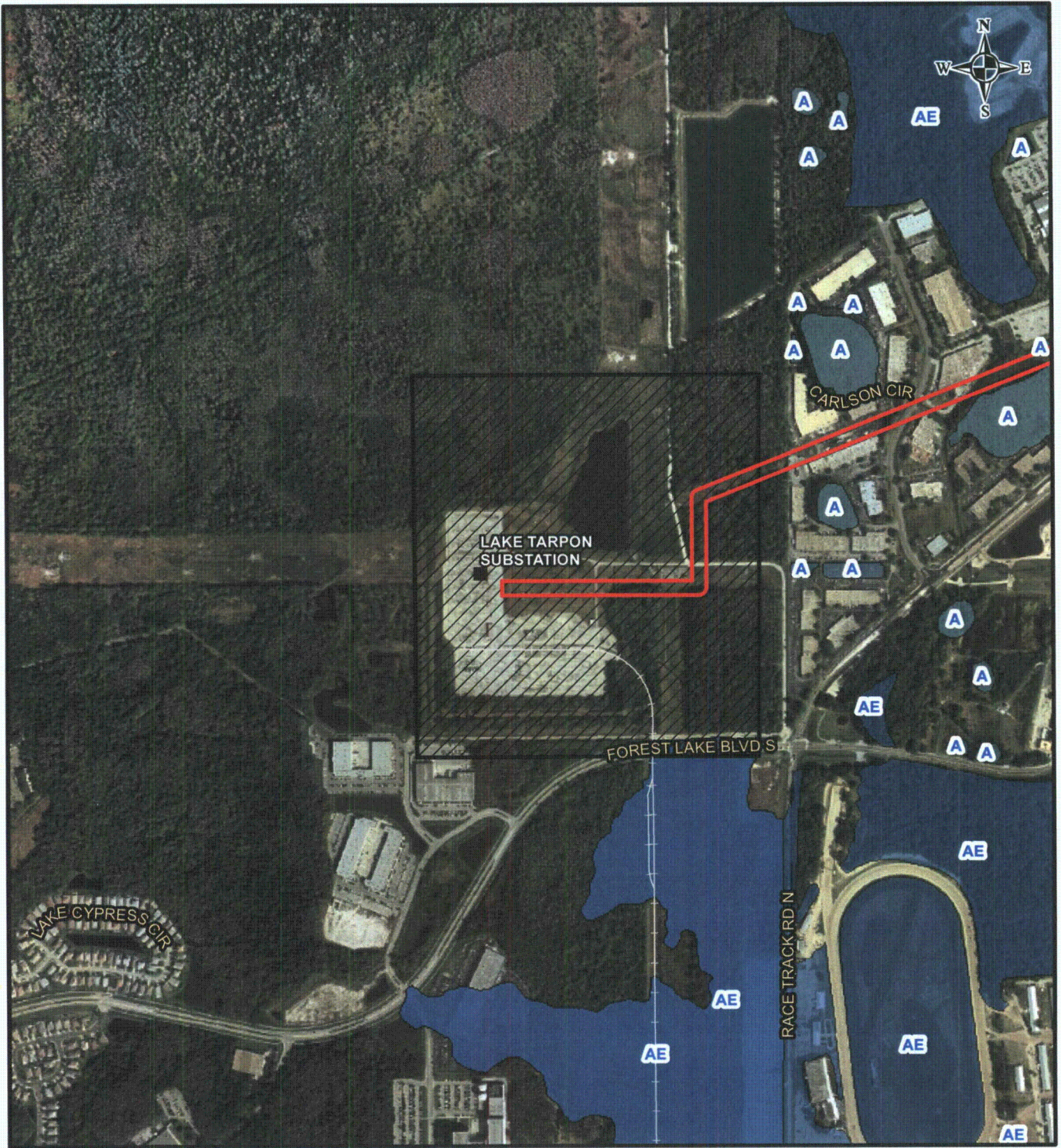
Substations and Right-of-Way: Progress Energy Florida & Golder Associates Inc., 2009; Roads: Florida Department of Transportation, 2010; Railroads: FDEP, 1992; Flood Zones: FEMA, Polk County - 1996; Pinellas & Hillsborough County - 2009; Aerials: ESRI, 2008

PROGRESS ENERGY FLORIDA
LEVY NUCLEAR PLANT

POLK - HILLSBOROUGH - PINELLAS FEMA 100 YEAR FLOODPLAIN MAP



MXD File No. 093-89547K007			SCALE AS SHOWN	REV 0
DESIGN	DLH	16 Nov 2009	FIGURE 7 PAGE 33 OF 34	
GIS	DLH	16 Feb 2010		
CHECK	SAR	16 Feb 2010		
REVIEW	KB	16 Feb 2010		



LEGEND

 PHP Right-of-Way

FLOOD ZONE DESCRIPTIONS

- A 100-yr Floodplain
(No Base Flood Elevations
have been determined)
- AE 100-yr Floodplain
(Base Flood Elevations
have been determined)
- VE 100-yr Floodplain with velocity (wave action)

REFERENCE

Substations and Right-of-Way: Progress Energy Florida & Golder Associates Inc., 2009; Roads: Florida Department of Transportation, 2010; Railroads: FDEP, 1992; Flood Zones: FEMA, Polk County - 1996; Pinellas & Hillsborough County - 2009; Aerials: ESRI, 2008

1,000 500 0 1,000
Feet

PROGRESS ENERGY FLORIDA
LEVY NUCLEAR PLANT

POLK - HILLSBOROUGH - PINELLAS FEMA 100 YEAR FLOODPLAIN MAP



MXD File No. 093-89547K007			SCALE AS SHOWN	REV 0
DESIGN	DLH	16 Nov 2009	FIGURE 7 PAGE 34 OF 34	
GIS	DLH	16 Feb 2010		
CHECK	SAR	16 Feb 2010		
REVIEW	KB	16 Feb 2010		