



LEGEND

LAND USE/LAND COVER CODES

| | |
|-------------------------------|-------------------------|
| 160, EXTRACTIVE | 540, BAYS AND ESTUARIES |
| 212, UNIMPROVED PASTURES | 631, WETLAND SCRUB |
| 434, HARDWOOD - CONIFER MIXED | 641, FRESHWATER MARSHES |
| 441, CONIFEROUS PLANTATIONS | 740, DISTURBED LANDS |
| 511, DITCHES | 812, RAILROADS |
| 520, LAKES | 814, ROADS AND HIGHWAYS |
| 530, RESERVOIRS | |

LCR Right-of-Way

REFERENCE

Substations and Right-of-Way: Progress Energy Florida & Golder Associates Inc., 2009; Roads: Florida Department of Transportation, 2010; Railroads: FDEP, 1992; FLUCCS Data: SWFWMD, 2007, Golder edited 2009; Aerials: Progress Energy, 2009

400 200 0 400 Feet

PROGRESS ENERGY FLORIDA
LEVY NUCLEAR PLANT

LEVY - CRYSTAL RIVER ENERGY COMPLEX HABITAT CLASSIFICATION MAP



| | | |
|--------|-----|--------------|
| DESIGN | DLH | 24 Sept 2009 |
| GIS | DLH | 04 Mar 2010 |
| CHECK | SAR | 04 Mar 2010 |
| REVIEW | KEI | 04 Mar 2010 |

SCALE AS SHOWN REV 0

FIGURE 5

PAGE 4 OF 10



LEGEND

LAND USE/LAND COVER CODES

| | |
|--|-----------------------------|
| 212, UNIMPROVED PASTURES | 630, WETLAND FORESTED MIXED |
| 434, HARDWOOD - CONIFER MIXED | 631, WETLAND SCRUB |
| 441, CONIFEROUS PLANTATIONS | 641, FRESHWATER MARSHES |
| 511, DITCHES | 643, WET PRAIRIES |
| 615, STREAM AND LAKE SWAMPS (BOTTOMLAND) | 812, RAILROADS |
| 617, MIXED WETLAND HARDWOODS | 814, ROADS AND HIGHWAYS |

LCR Right-of-Way

400 200 0 400
Feet

REFERENCE

Substations and Right-of-Way: Progress Energy Florida & Golder Associates Inc., 2009; Roads: Florida Department of Transportation, 2010; Railroads: FDEP, 1992; FLUCCS Data: SWFWMD, 2007, Golder edited 2009; Aerials: Progress Energy, 2009

PROGRESS ENERGY FLORIDA
LEVY NUCLEAR PLANT

LEVY - CRYSTAL RIVER ENERGY COMPLEX HABITAT CLASSIFICATION MAP



| | | |
|----------------------------|----------------|--------------|
| MXD File No: 063-99547G005 | SCALE AS SHOWN | REV 0 |
| DESIGN | DLH | 24 Sept 2009 |
| GIS | DLH | 04 Mar 2010 |
| CHECK | SAR | 04 Mar 2010 |
| REVIEW | KB | 04 Mar 2010 |

FIGURE 5
PAGE 5 OF 10



LEGEND

LAND USE/LAND COVER CODES

- 150, INDUSTRIAL
- 212, UNIMPROVED PASTURES
- 434, HARDWOOD - CONIFER MIXED
- 441, CONIFEROUS PLANTATIONS
- 511, DITCHES
- 615, STREAM AND LAKE SWAMPS (BOTTOMLAND)
- 617, MIXED WETLAND HARDWOODS

LCR Right-of-Way

- 621, CYPRESS
- 630, WETLAND FORESTED MIXED
- 631, WETLAND SCRUB
- 641, FRESHWATER MARSHES
- 643, WET PRAIRIES
- 812, RAILROADS
- 814, ROADS AND HIGHWAYS

REFERENCE

Substations and Right-of-Way: Progress Energy Florida & Golder Associates Inc., 2009; Roads: Florida Department of Transportation, 2010; Railroads: FDEP, 1992; FLUCCS Data: SWFWMD, 2007, Golder edited 2009; Aerials: Progress Energy, 2009

400 200 0 400
Feet

PROGRESS ENERGY FLORIDA
LEVY NUCLEAR PLANT

LEVY - CRYSTAL RIVER ENERGY COMPLEX HABITAT CLASSIFICATION MAP



| | | | | | |
|----------------------------|-----|--------------|--|----------------|-------|
| MXD File No. 003-89547G005 | | | | SCALE AS SHOWN | REV 0 |
| DESIGN | DLH | 24 Sept 2009 | | | |
| GIS | DLH | 04 Mar 2010 | | | |
| CHECK | SAR | 04 Mar 2010 | | | |
| REVIEW | KB | 04 Mar 2010 | | | |

FIGURE 5
PAGE 6 OF 10

F:\PROJECTS\2009\0925-89547 PEF\CF Wetland Delineation T&E Surveys\G - ERP LCR Route GIS\MXD\0925-89547\G005 FLUCCS.mxd



LEGEND

LAND USE/LAND COVER CODES

- | | | | |
|--|--|--|-------------------------------|
| | 150, INDUSTRIAL | | 621, CYPRESS |
| | 211, IMPROVED PASTURES | | 630, WETLAND FORESTED MIXED |
| | 212, UNIMPROVED PASTURES | | 631, WETLAND SCRUB |
| | 411, PINE FLATWOODS | | 641, FRESHWATER MARSHES |
| | 434, HARDWOOD - CONIFER MIXED | | 643, WET PRAIRIES |
| | 441, CONIFEROUS PLANTATIONS | | 812, RAILROADS |
| | 511, DITCHES | | 814, ROADS AND HIGHWAYS |
| | 534, RESERVOIRS <10 ACRES | | 822, COMMUNICATION FACILITIES |
| | 615, STREAM AND LAKE SWAMPS (BOTTOMLAND) | | |

LCR Right-of-Way

REFERENCE

Substations and Right-of-Way: Progress Energy Florida & Golder Associates Inc., 2009; Roads: Florida Department of Transportation, 2010; Railroads: FDEP, 1992; FLUCCS Data: SWFWMD, 2007, Golder edited 2009; Aerials: Progress Energy, 2009

PROGRESS ENERGY FLORIDA
LEVY NUCLEAR PLANT

LEVY - CRYSTAL RIVER ENERGY COMPLEX HABITAT CLASSIFICATION MAP



Progress Energy

| | | | | |
|-----------------------------|-----|--------------|-----------------|-------|
| MXD File No: 0925-89547G005 | | | SCALE AS SHOWN | REV 0 |
| DESIGN | DLH | 24 Sept 2009 | FIGURE 5 | |
| GIS | DLH | 04 Mar 2010 | | |
| CHECK | SAR | 04 Mar 2010 | | |
| REVIEW | KB | 04 Mar 2010 | | |

PAGE 7 OF 10



LEGEND

LAND USE/LAND COVER CODES

| | |
|-------------------------------|--|
| 211, IMPROVED PASTURES | 511, DITCHES |
| 212, UNIMPROVED PASTURES | 615, STREAM AND LAKE SWAMPS (BOTTOMLAND) |
| 254, AQUICULTURE | 621, CYPRESS |
| 320, SHRUB AND BRUSHLAND | 630, WETLAND FORESTED MIXED |
| 411, PINE FLATWOODS | 631, WETLAND SCRUB |
| 434, HARDWOOD - CONIFER MIXED | 641, FRESHWATER MARSHES |
| 440, TREE PLANTATIONS | 812, RAILROADS |
| 441, CONIFEROUS PLANTATIONS | 814, ROADS AND HIGHWAYS |

LCR Right-of-Way

REFERENCE

Substations and Right-of-Way: Progress Energy Florida & Golder Associates Inc., 2009; Roads: Florida Department of Transportation, 2010; Railroads: FDEP, 1992; FLUCCS Data: SWFWMD, 2007, Golder edited 2009; Aerials: Progress Energy, 2009

PROGRESS ENERGY FLORIDA
LEVY NUCLEAR PLANT

LEVY - CRYSTAL RIVER ENERGY COMPLEX HABITAT CLASSIFICATION MAP



| | | |
|----------------------------|----------------|--------------|
| MXD File No. 093-89547G005 | SCALE AS SHOWN | REV 0 |
| DESIGN | DLH | 24 Sept 2009 |
| GIS | DLH | 04 Mar 2010 |
| CHECK | SAR | 04 Mar 2010 |
| REVIEW | KB | 04 Mar 2010 |

FIGURE 5

PAGE 8 OF 10



LEGEND

LAND USE/LAND COVER CODES

| | |
|--|--------------------------------|
| 211, IMPROVED PASTURES | 630, WETLAND FORESTED MIXED |
| 212, UNIMPROVED PASTURES | 631, WETLAND SCRUB |
| 254, AQUICULTURE | 641, FRESHWATER MARSHES |
| 434, HARDWOOD - CONIFER MIXED | 812, RAILROADS |
| 511, DITCHES | 814, ROADS AND HIGHWAYS |
| 534, RESERVOIRS <10 ACRES | 831, ELECTRIC POWER FACILITIES |
| 615, STREAM AND LAKE SWAMPS (BOTTOMLAND) | |

LCR Right-of-Way

400 200 0 400 Feet

REFERENCE

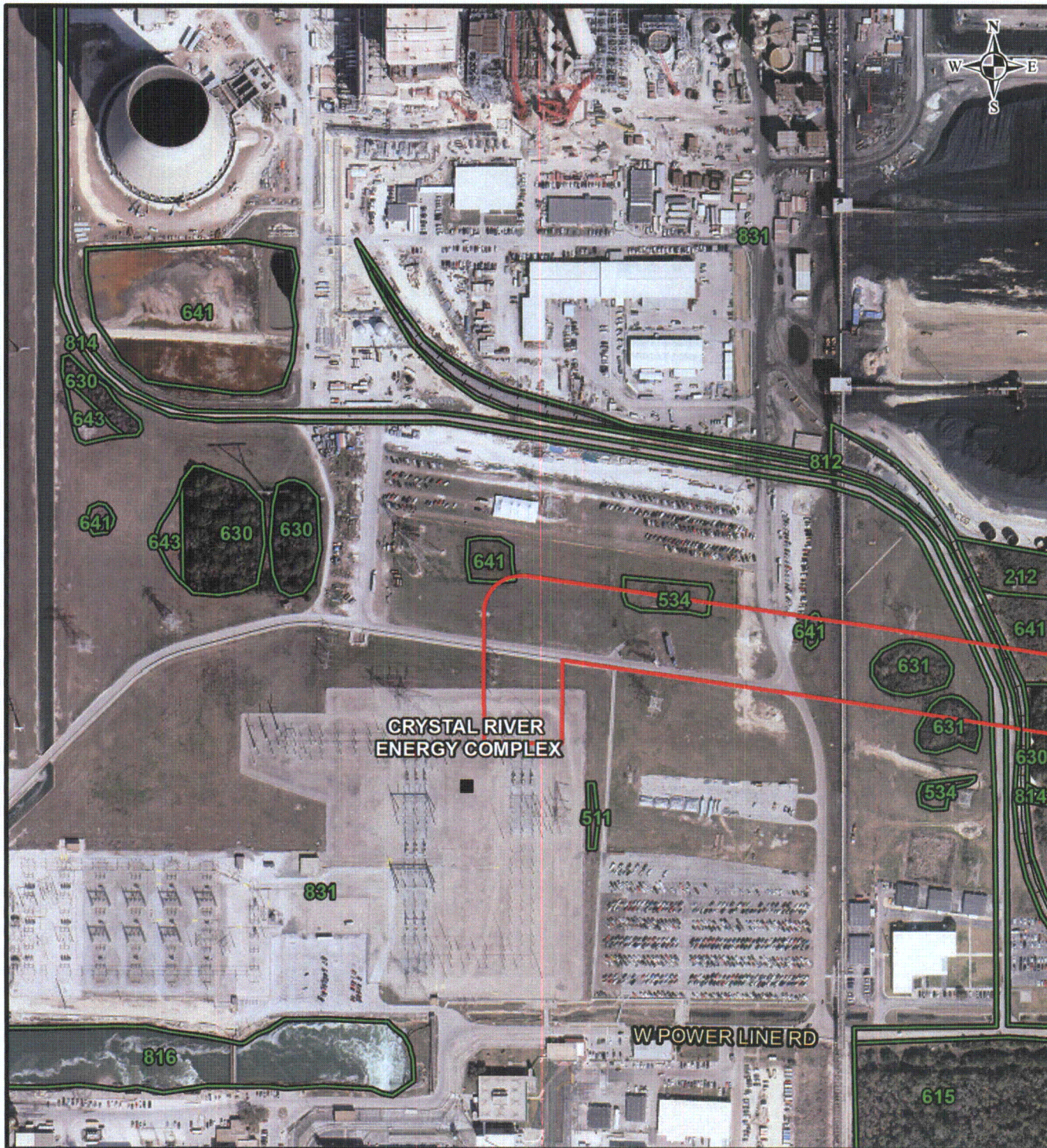
Substations and Right-of-Way: Progress Energy Florida & Golder Associates Inc., 2009; Roads: Florida Department of Transportation, 2010; Railroads: FDEP, 1992; FLUCCS Data: SWFWMD, 2007, Golder edited 2009; Aerials: Progress Energy, 2009

PROGRESS ENERGY FLORIDA
LEVY NUCLEAR PLANT

LEVY - CRYSTAL RIVER ENERGY COMPLEX HABITAT CLASSIFICATION MAP



| | | |
|----------------------------|--------------------------|--------|
| MXD File No. 093-89547G005 | SCALE AS SHOWN | REV. 0 |
| DESIGN DLH 24 Sept 2009 | FIGURE 5 PAGE 9 OF 10 | |
| GIS DLH 04 Mar 2010 | | |
| CHECK SAR 04 Mar 2010 | | |
| REVIEW KB 04 Mar 2010 | | |



LEGEND

LAND USE/LAND COVER CODES

| | |
|--|--------------------------------|
| 212, UNIMPROVED PASTURES | 641, FRESHWATER MARSHES |
| 511, DITCHES | 643, WET PRAIRIES |
| 534, RESERVOIRS <10 ACRES | 812, RAILROADS |
| 615, STREAM AND LAKE SWAMPS (BOTTOMLAND) | 814, ROADS AND HIGHWAYS |
| 630, WETLAND FORESTED MIXED | 816, CANALS AND LOCKS |
| 631, WETLAND SCRUB | 831, ELECTRIC POWER FACILITIES |

LCR Right-of-Way

400 200 0 400 Feet

REFERENCE

Substations and Right-of-Way: Progress Energy Florida & Golder Associates Inc., 2009; Roads: Florida Department of Transportation, 2010; Railroads: FDEP, 1992; FLUCCS Data: SWFWMD, 2007, Golder edited 2009; Aerials: Progress Energy, 2009

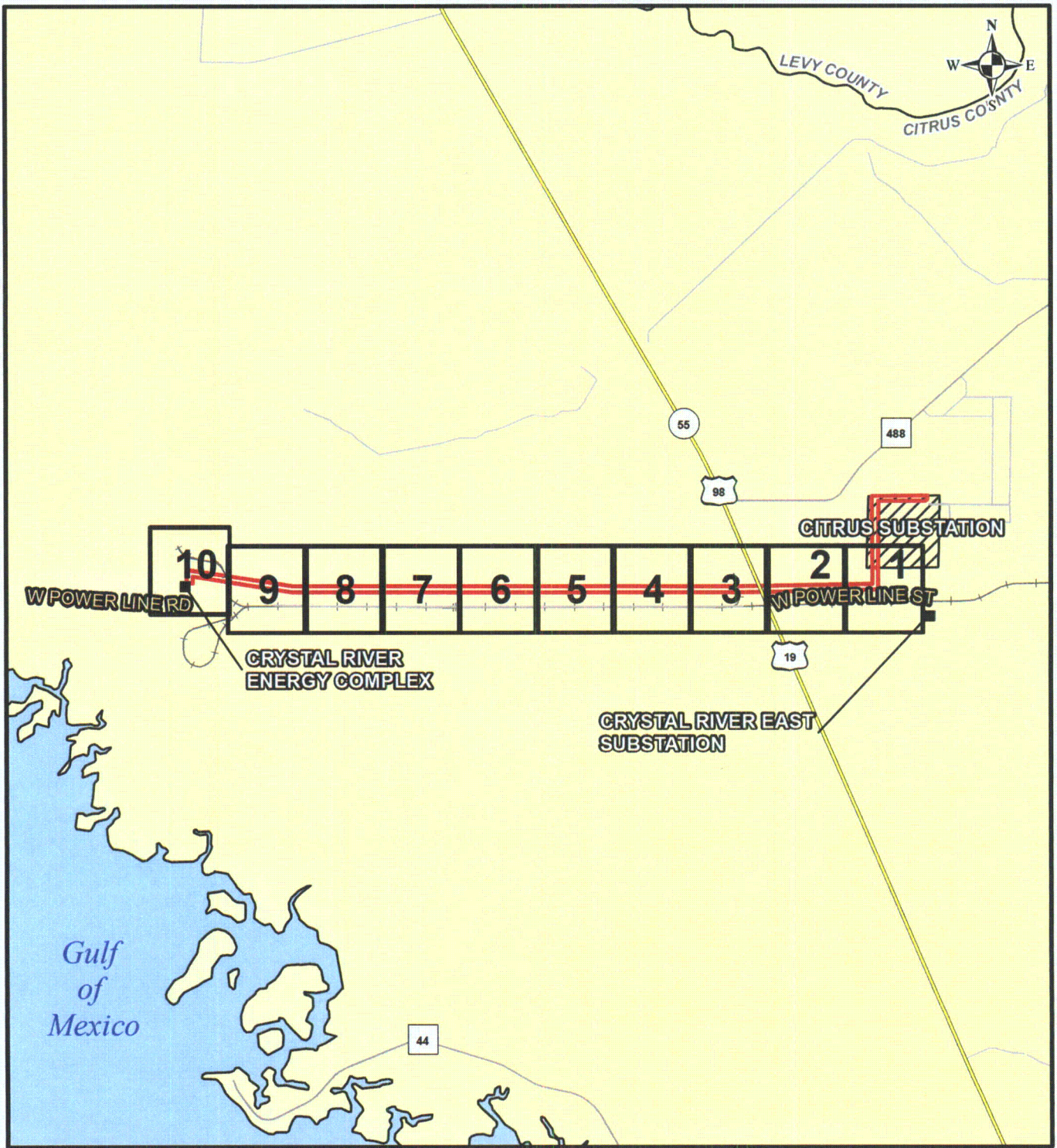
PROGRESS ENERGY FLORIDA
LEVY NUCLEAR PLANT

LEVY - CRYSTAL RIVER ENERGY COMPLEX HABITAT CLASSIFICATION MAP



| | | |
|----------------------------|-----------------|--------|
| MXD File No. 063-80547G005 | SCALE AS SHOWN | REV. 0 |
| DESIGN DLH 24 Sept 2009 | FIGURE 5 | |
| GIS DLH 04 Mar 2010 | | |
| CHECK SAR 04 Mar 2010 | | |
| REVIEW KB 04 Mar 2010 | | |

PAGE 10 OF 10

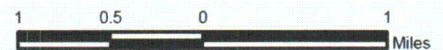


LEGEND

- US Road
- State Road
- County Road
- Local Road
- Railroad
- LCR Right-of-Way
- County Boundaries

REFERENCE

Substations and Right-of-Way: Progress Energy Florida & Golder Associates Inc., 2009; Roads: Florida Department of Transportation, 2010; Railroads: FDEP, 1992; County Boundary: U.S. Census Bureau, 2000



PROGRESS ENERGY FLORIDA
LEVY NUCLEAR PLANT

LEVY - CRYSTAL RIVER ENERGY COMPLEX LISTED SPECIES MAP



| | | | |
|----------------------------|-----|----------------|---------------------------|
| MXD File No: 063-89547G006 | | SCALE AS SHOWN | REV. 0 |
| DESIGN | DLH | 24 Sept 2009 | FIGURE 6 INDEX |
| GIS | DLH | 04 Mar 2010 | |
| CHECK | SAR | 04 Mar 2010 | |
| REVIEW | KB | 04 Mar 2010 | |



LEGEND

LCR Right-of-Way

GOLDER OBSERVED SPECIES

- ▲ American Alligator
- ▲ Gopher Tortoise
- ▲ Potential Eastern Indigo Snake
- Wood Stork

REFERENCE

Substations and Right-of-Way: Progress Energy Florida & Golder Associates Inc., 2009; Roads: Florida Department of Transportation, 2010; Railroads: FDEP, 1992; Listed Species Data: Golder Observed, 2009; Wood Stork Colony Data: U.S. Fish & Wildlife Service, 2009; Aerials: Progress Energy, 2009

400 200 0 400 Feet

NOTE: No portion of the Citrus - Crystal River Energy Complex line lies within Wood Stork Core Foraging Areas.

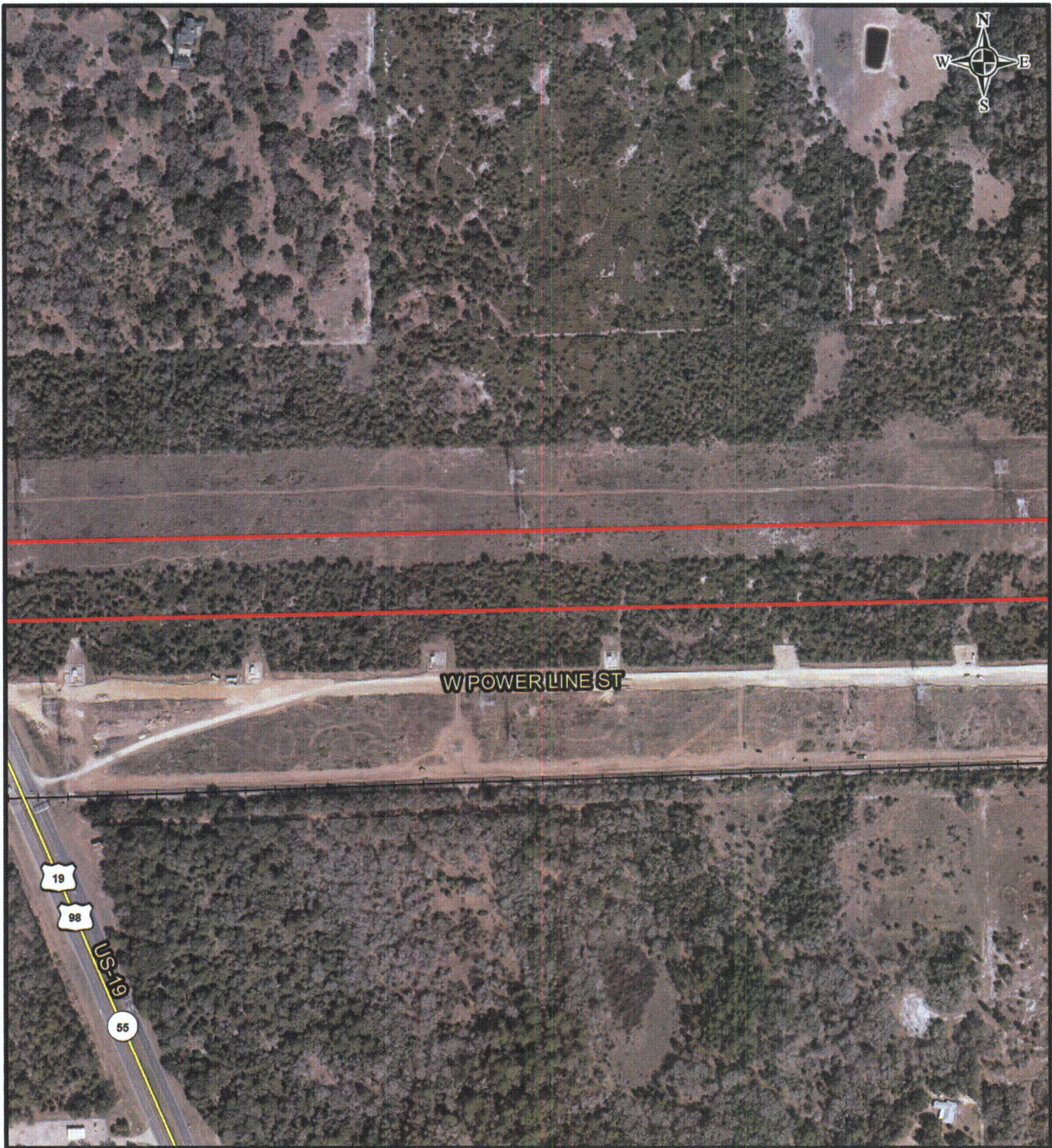
PROGRESS ENERGY FLORIDA
LEVY NUCLEAR PLANT

LEVY - CRYSTAL RIVER ENERGY COMPLEX LISTED SPECIES MAP



| | | | |
|----------------------------|-----|----------------|--------|
| MXD File No. 003-89547G006 | | SCALE AS SHOWN | REV. 0 |
| DESIGN | DLH | 24 Sept 2009 | |
| GIS | DLH | 04 Mar 2010 | |
| CHECK | SAR | 04 Mar 2010 | |
| REVIEW | KB | 04 Mar 2010 | |

FIGURE 6
PAGE 1 OF 10



LEGEND

LCR Right-of-Way

GOLDER OBSERVED SPECIES

- ▲ American Alligator
- ▲ Gopher Tortoise
- ▲ Potential Eastern Indigo Snake
- Wood Stork

REFERENCE

Substations and Right-of-Way: Progress Energy Florida & Golder Associates Inc., 2009; Roads: Florida Department of Transportation, 2010; Railroads: FDEP, 1992; Listed Species Data: Golder Observed, 2009; Wood Stork Colony Data: U.S. Fish & Wildlife Service, 2009; Aerials: Progress Energy, 2009

400 200 0 400
Feet

NOTE: No portion of the Citrus - Crystal River Energy Complex line lies within Wood Stork Core Foraging Areas.

PROGRESS ENERGY FLORIDA
LEVY NUCLEAR PLANT

LEVY - CRYSTAL RIVER ENERGY COMPLEX LISTED SPECIES MAP



| | | | | | |
|----------------------------|-----|--------------|--|----------------|--------|
| MXD File No: 093-89547G006 | | | | SCALE AS SHOWN | REV. 0 |
| DESIGN | DLH | 24 Sept 2009 | FIGURE 6 PAGE 2 OF 10 | | |
| GIS | DLH | 04 Mar 2010 | | | |
| CHECK | SAR | 04 Mar 2010 | | | |
| REVIEW | KB | 04 Mar 2010 | | | |



LEGEND

LCR Right-of-Way

GOLDER OBSERVED SPECIES

- ▲ American Alligator
- ▲ Gopher Tortoise
- ▲ Potential Eastern Indigo Snake
- Wood Stork

REFERENCE

Substations and Right-of-Way: Progress Energy Florida & Golder Associates Inc., 2009; Roads: Florida Department of Transportation, 2010; Railroads: FDEP, 1992; Listed Species Data: Golder Observed, 2009; Wood Stork Colony Data: U.S. Fish & Wildlife Service, 2009; Aerials: Progress Energy, 2009

NOTE: No portion of the Citrus - Crystal River Energy Complex line lies within Wood Stork Core Foraging Areas.

PROGRESS ENERGY FLORIDA
LEVY NUCLEAR PLANT

LEVY - CRYSTAL RIVER ENERGY COMPLEX LISTED SPECIES MAP



| | | | | | |
|----------------------------|-----|--------------|--|--|--------|
| MXD File No. 003-89547G006 | | | | SCALE AS SHOWN | REV. 0 |
| DESIGN | DLH | 24 Sept 2009 | | FIGURE 6 PAGE 3 OF 10 | |
| GIS | DLH | 04 Mar 2010 | | | |
| CHECK | SAR | 04 Mar 2010 | | | |
| REVIEW | KB | 04 Mar 2010 | | | |



LEGEND

LCR Right-of-Way

GOLDER OBSERVED SPECIES

- ▲ American Alligator
- ▲ Gopher Tortoise
- ▲ Potential Eastern Indigo Snake
- Wood Stork

REFERENCE

Substations and Right-of-Way: Progress Energy Florida & Golder Associates Inc., 2009; Roads: Florida Department of Transportation, 2010; Railroads: FDEP, 1992; Listed Species Data: Golder Observed, 2009; Wood Stork Colony Data: U.S. Fish & Wildlife Service, 2009; Aerials: Progress Energy, 2009

400 200 0 400
Feet

NOTE: No portion of the Citrus - Crystal River Energy Complex line lies within Wood Stork Core Foraging Areas.

PROGRESS ENERGY FLORIDA
LEVY NUCLEAR PLANT

LEVY - CRYSTAL RIVER ENERGY COMPLEX LISTED SPECIES MAP



| | | | | |
|----------------------------|-----|--------------|--|--------|
| MXD File No. 093-89547G006 | | | SCALE AS SHOWN | REV. 0 |
| DESIGN | DLH | 24 Sept 2009 | FIGURE 6 PAGE 4 OF 10 | |
| GIS | DLH | 04 Mar 2010 | | |
| CHECK | SAR | 04 Mar 2010 | | |
| REVIEW | KB | 04 Mar 2010 | | |



LEGEND

LCR Right-of-Way

GOLDER OBSERVED SPECIES

- ▲ American Alligator
- ▲ Gopher Tortoise
- ▲ Potential Eastern Indigo Snake
- Wood Stork

REFERENCE

Substations and Right-of-Way: Progress Energy Florida & Golder Associates Inc., 2009; Roads: Florida Department of Transportation, 2010; Railroads: FDEP, 1992; Listed Species Data: Golder Observed, 2009; Wood Stork Colony Data: U.S. Fish & Wildlife Service, 2009; Aerials: Progress Energy, 2009

400 200 0 400
Feet

NOTE: No portion of the Citrus - Crystal River Energy Complex line lies within Wood Stork Core Foraging Areas.

PROGRESS ENERGY FLORIDA
LEVY NUCLEAR PLANT

LEVY - CRYSTAL RIVER ENERGY COMPLEX LISTED SPECIES MAP



| | | | | |
|----------------------------|-----|--------------|--|-------|
| MXD File No. 093-89547G006 | | | SCALE AS SHOWN | REV 0 |
| DESIGN | DLH | 24 Sept 2009 | FIGURE 6 PAGE 5 OF 10 | |
| GIS | DLH | 04 Mar 2010 | | |
| CHECK | SAR | 04 Mar 2010 | | |
| REVIEW | KB | 04 Mar 2010 | | |



LEGEND

LCR Right-of-Way

GOLDER OBSERVED SPECIES

- ▲ American Alligator
- ▲ Gopher Tortoise
- ▲ Potential Eastern Indigo Snake
- Wood Stork

REFERENCE

Substations and Right-of-Way: Progress Energy Florida & Golder Associates Inc., 2009; Roads: Florida Department of Transportation, 2010; Railroads: FDEP, 1992; Listed Species Data: Golder Observed, 2009; Wood Stork Colony Data: U.S. Fish & Wildlife Service, 2009; Aerials: Progress Energy, 2009

400 200 0 400
Feet

NOTE: No portion of the Citrus - Crystal River Energy Complex line lies within Wood Stork Core Foraging Areas.

PROGRESS ENERGY FLORIDA
LEVY NUCLEAR PLANT

LEVY - CRYSTAL RIVER ENERGY COMPLEX LISTED SPECIES MAP



| | | |
|----------------------------|--|--------|
| MXD File No. 093-89547G006 | SCALE AS SHOWN | REV. 0 |
| DESIGN DLH 24 Sept 2009 | FIGURE 6 PAGE 6 OF 10 | |
| GIS DLH 04 Mar 2010 | | |
| CHECK SAR 04 Mar 2010 | | |
| REVIEW KB 04 Mar 2010 | | |



LEGEND

LCR Right-of-Way

GOLDER OBSERVED SPECIES

- ▲ American Alligator
- ▲ Gopher Tortoise
- ▲ Potential Eastern Indigo Snake
- Wood Stork

REFERENCE

Substations and Right-of-Way: Progress Energy Florida & Golder Associates Inc., 2009; Roads: Florida Department of Transportation, 2010; Railroads: FDEP, 1992; Listed Species Data: Golder Observed, 2009; Wood Stork Colony Data: U.S. Fish & Wildlife Service, 2009; Aerials: Progress Energy, 2009

400 200 0 400
Feet

NOTE: No portion of the Citrus - Crystal River Energy Complex line lies within Wood Stork Core Foraging Areas.

PROGRESS ENERGY FLORIDA
LEVY NUCLEAR PLANT

LEVY - CRYSTAL RIVER ENERGY COMPLEX LISTED SPECIES MAP



| | | | |
|--------------|------------------|--|-------|
| MXD File No. | 093-89547G006 | SCALE AS SHOWN | REV 0 |
| DESIGN | DLH 24 Sept 2009 | FIGURE 6 PAGE 7 OF 10 | |
| GIS | DLH 04 Mar 2010 | | |
| CHECK | SAR 04 Mar 2010 | | |
| REVIEW | KB 04 Mar 2010 | | |



LEGEND

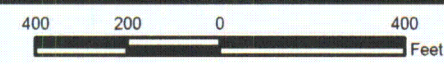
LCR Right-of-Way

GOLDER OBSERVED SPECIES

- American Alligator
- Gopher Tortoise
- Potential Eastern Indigo Snake
- Wood Stork

REFERENCE

Substations and Right-of-Way: Progress Energy Florida & Golder Associates Inc., 2009; Roads: Florida Department of Transportation, 2010; Railroads: FDEP, 1992; Listed Species Data: Golder Observed, 2009; Wood Stork Colony Data: U.S. Fish & Wildlife Service, 2009; Aerials: Progress Energy, 2009



NOTE: No portion of the Citrus - Crystal River Energy Complex line lies within Wood Stork Core Foraging Areas.

PROGRESS ENERGY FLORIDA
LEVY NUCLEAR PLANT

**LEVY - CRYSTAL RIVER ENERGY COMPLEX
LISTED SPECIES MAP**



| | | | |
|----------------------------|-----|----------------|-------|
| MXD File No: 093-89547G006 | | SCALE AS SHOWN | REV 0 |
| DESIGN | DLH | 24 Sept 2009 | |
| GIS | DLH | 04 Mar 2010 | |
| CHECK | SAR | 04 Mar 2010 | |
| REVIEW | KB | 04 Mar 2010 | |

FIGURE 6
PAGE 8 OF 10



W POWER LINE RD

LEGEND

LCR Right-of-Way

GOLDER OBSERVED SPECIES

- ▲ American Alligator
- ▲ Gopher Tortoise
- ▲ Potential Eastern Indigo Snake
- Wood Stork

REFERENCE

Substations and Right-of-Way: Progress Energy Florida & Golder Associates Inc., 2009; Roads: Florida Department of Transportation, 2010; Railroads: FDEP, 1992; Listed Species Data: Golder Observed, 2009; Wood Stork Colony Data: U.S. Fish & Wildlife Service, 2009; Aerials: Progress Energy, 2009

400 200 0 400
Feet

NOTE: No portion of the Citrus - Crystal River Energy Complex line lies within Wood Stork Core Foraging Areas.

PROGRESS ENERGY FLORIDA
LEVY NUCLEAR PLANT

LEVY - CRYSTAL RIVER ENERGY COMPLEX LISTED SPECIES MAP



| | | | | |
|----------------------------|-----|--------------|--|--------|
| MXD File No. 093-89547G006 | | | SCALE AS SHOWN | REV. 0 |
| DESIGN | DLH | 24 Sept 2009 | FIGURE 6 PAGE 9 OF 10 | |
| GIS | DLH | 04 Mar 2010 | | |
| CHECK | SAR | 04 Mar 2010 | | |
| REVIEW | KB | 04 Mar 2010 | | |



LEGEND

LCR Right-of-Way

GOLDER OBSERVED SPECIES

- ▲ American Alligator
- ▲ Gopher Tortoise
- ▲ Potential Eastern Indigo Snake
- Wood Stork

REFERENCE

Substations and Right-of-Way: Progress Energy Florida & Golder Associates Inc., 2009; Roads: Florida Department of Transportation, 2010; Railroads: FDEP, 1992; Listed Species Data: Golder Observed, 2009; Wood Stork Colony Data: U.S. Fish & Wildlife Service, 2009; Aerials: Progress Energy, 2009

400 200 0 400
Feet

NOTE: No portion of the Citrus - Crystal River Energy Complex line lies within Wood Stork Core Foraging Areas.

PROGRESS ENERGY FLORIDA
LEVY NUCLEAR PLANT

LEVY - CRYSTAL RIVER ENERGY COMPLEX LISTED SPECIES MAP



| | | | |
|----------------------------|-----|----------------|---|
| MXD File No: 093-89547G006 | | SCALE AS SHOWN | REV 0 |
| DESIGN | DLH | 24 Sept 2009 | FIGURE 6 PAGE 10 OF 10 |
| GIS | DLH | 04 Mar 2010 | |
| CHECK | SAR | 04 Mar 2010 | |
| REVIEW | KB | 04 Mar 2010 | |



LEGEND

LCR Right-of-Way

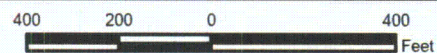
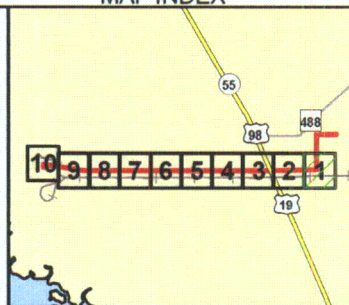
FEMA FLOOD ZONES

- A 100-yr Floodplain
(No Base Flood Elevations
have been determined)
- AE 100-yr Floodplain
(Base Flood Elevations
have been determined)
- VE 100-yr Floodplain with
wave velocity

REFERENCE

Substations and Right-of-Way: Progress Energy Florida & Golder Associates Inc., 2009; Roads: Florida Department of Transportation, 2010; Railroads: FDEP, 1992; Flood Zones: FEMA, 1996; Aerials: Progress Energy, 2009

MAP INDEX



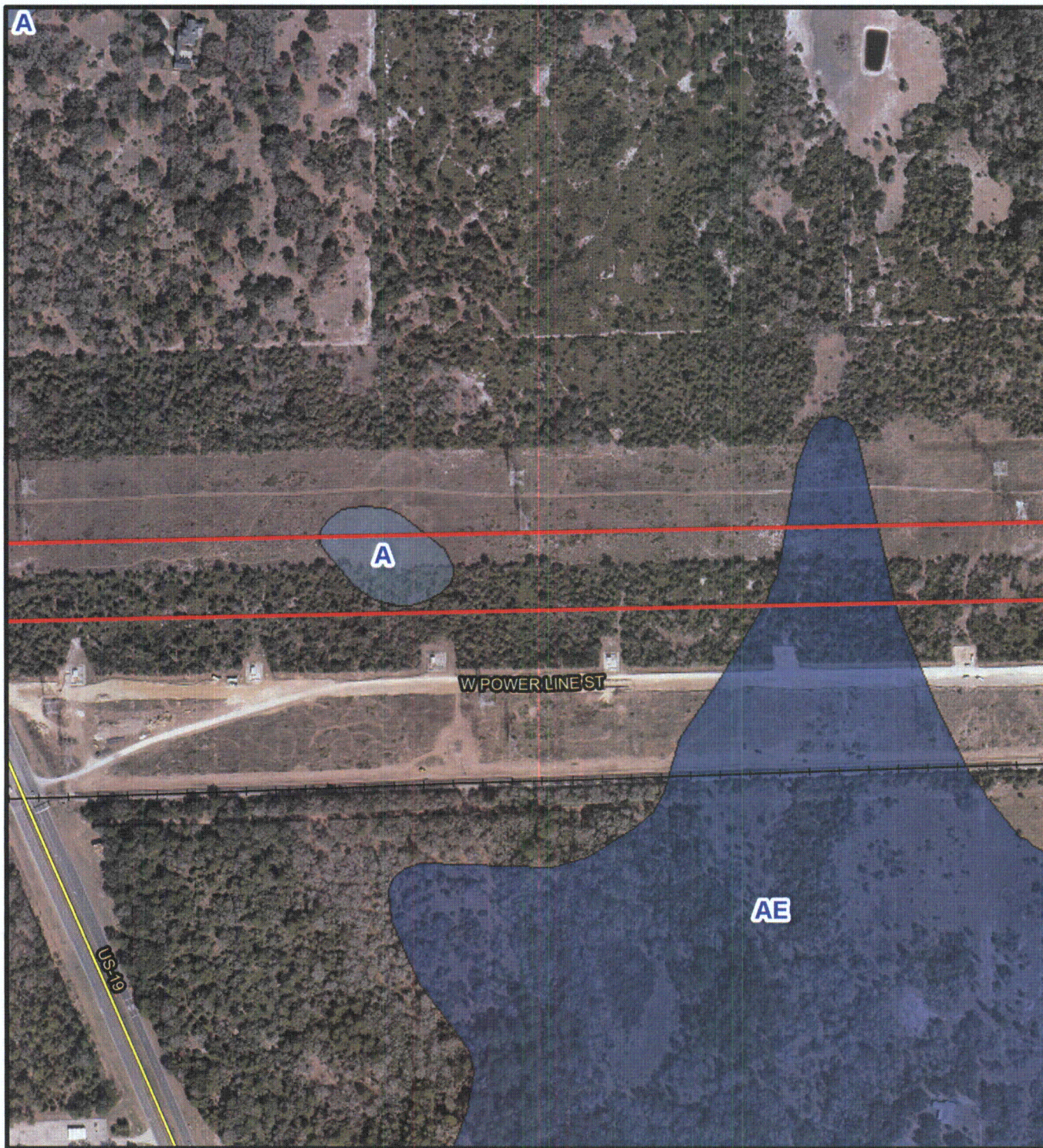
PROGRESS ENERGY FLORIDA
LEVY NUCLEAR PLANT

LEVY - CRYSTAL RIVER ENERGY COMPLEX FEMA 100 YEAR FLOODPLAIN MAP



| | | | |
|----------------------------|-----|----------------|--|
| MXD File No: 063-89547G007 | | SCALE AS SHOWN | REV. 0 |
| DESIGN | JDG | 11 Dec 2009 | FIGURE 7 PAGE 1 OF 10 |
| GIS | DLH | 04 Mar 2010 | |
| CHECK | SAR | 04 Mar 2010 | |
| REVIEW | KB | 04 Mar 2010 | |

F:\PROJECTS\2009\PEFCF Wetland Delineation T&E Surveys\G - ERP LCR Route\GIS\MXD\093-89547\G007 FEMA.mxd



LEGEND

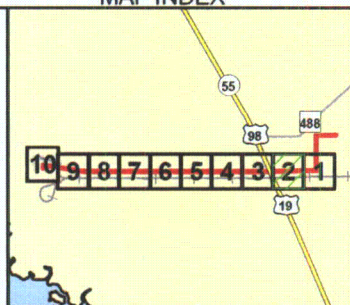
LCR Right-of-Way
FEMA FLOOD ZONES

- A 100-yr Floodplain
(No Base Flood Elevations
have been determined)
- AE 100-yr Floodplain
(Base Flood Elevations
have been determined)
- VE 100-yr Floodplain with
wave velocity

REFERENCE

Substations and Right-of-Way: Progress Energy Florida & Golder Associates Inc., 2009; Roads: Florida Department of Transportation, 2010; Railroads: FDEP, 1992; Flood Zones: FEMA, 1996; Aerials: Progress Energy, 2009

MAP INDEX



400 200 0 400
 Feet

PROGRESS ENERGY FLORIDA
 LEVY NUCLEAR PLANT

LEVY - CRYSTAL RIVER ENERGY COMPLEX FEMA 100 YEAR FLOODPLAIN MAP



| MXD File No: 093-89547G007 | | | SCALE AS SHOWN | REV 0 |
|----------------------------|-----|-------------|-----------------|---------------------|
| DESIGN | JDG | 11 Dec 2009 | FIGURE 7 | PAGE 2 OF 10 |
| GIS | DLH | 04 Mar 2010 | | |
| CHECK | SAR | 04 Mar 2010 | | |
| REVIEW | KB | 04 Mar 2010 | | |

F:\PROJECTS\2009\PEF\Wetland Delineation\T&E Surveys\GIS\MXD\093-86547\0007 FEMA.mxd



LEGEND

LCR Right-of-Way

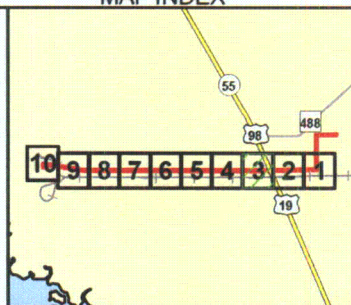
FEMA FLOOD ZONES

- A 100-yr Floodplain (No Base Flood Elevations have been determined)
- AE 100-yr Floodplain (Base Flood Elevations have been determined)
- VE 100-yr Floodplain with wave velocity

REFERENCE

Substations and Right-of-Way: Progress Energy Florida & Golder Associates Inc., 2009; Roads: Florida Department of Transportation, 2010; Railroads: FDEP, 1992; Flood Zones: FEMA, 1996; Aerials: Progress Energy, 2009

MAP INDEX



400 200 0 400 Feet

PROGRESS ENERGY FLORIDA
LEVY NUCLEAR PLANT

LEVY - CRYSTAL RIVER ENERGY COMPLEX FEMA 100 YEAR FLOODPLAIN MAP



| MXD File No. 093-86547G007 | | SCALE AS SHOWN | REV 0 |
|----------------------------|-----|----------------|-------|
| DESIGN | JDG | 11 Dec 2009 | |
| GIS | DLH | 04 Mar 2010 | |
| CHECK | SAR | 04 Mar 2010 | |
| REVIEW | KB | 04 Mar 2010 | |

FIGURE 7

PAGE 3 OF 10



LEGEND

LCR Right-of-Way

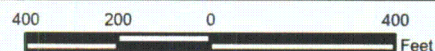
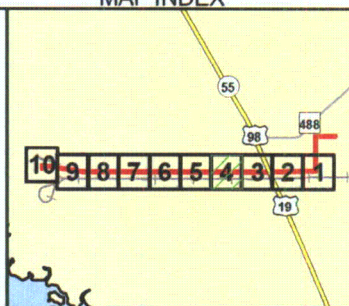
FEMA FLOOD ZONES

- A 100-yr Floodplain (No Base Flood Elevations have been determined)
- AE 100-yr Floodplain (Base Flood Elevations have been determined)
- VE 100-yr Floodplain with wave velocity

REFERENCE

Substations and Right-of-Way: Progress Energy Florida & Golder Associates Inc., 2009; Roads: Florida Department of Transportation, 2010; Railroads: FDEP, 1992; Flood Zones: FEMA, 1996; Aerials: Progress Energy, 2009

MAP INDEX



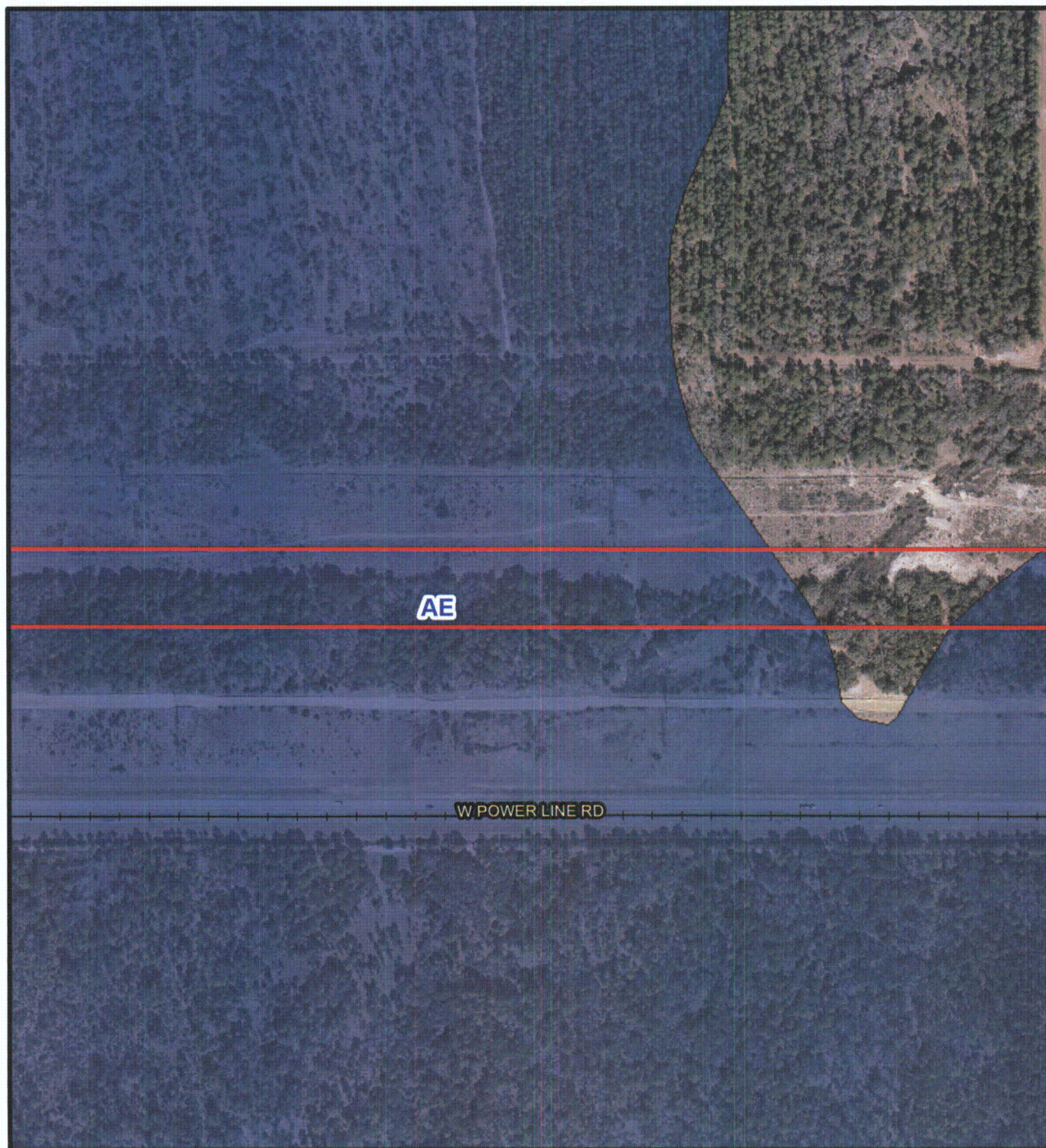
PROGRESS ENERGY FLORIDA
LEVY NUCLEAR PLANT

LEVY - CRYSTAL RIVER ENERGY COMPLEX FEMA 100 YEAR FLOODPLAIN MAP



| | | | |
|----------------------------|-----|----------------|--|
| MXD File No: 063-89547G007 | | SCALE AS SHOWN | REV 0 |
| DESIGN | JDG | 11 Dec 2009 | FIGURE 7 PAGE 4 OF 10 |
| GIS | DJH | 04 Mar 2010 | |
| CHECK | SAR | 04 Mar 2010 | |
| REVIEW | KB | 04 Mar 2010 | |

F:\PROJECTS\2009\PEFCF Wetland Delineation\T&E Surveys\G - ERP LCR Route\GIS\WMD\955-8954\7G007 FEMA.mxd



LEGEND

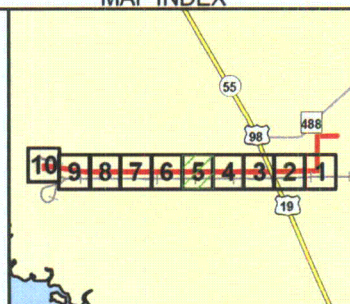
 LCR Right-of-Way
FEMA FLOOD ZONES

- A 100-yr Floodplain
(No Base Flood Elevations
have been determined)
- AE 100-yr Floodplain
(Base Flood Elevations
have been determined)
- VE 100-yr Floodplain with
wave velocity

REFERENCE

Substations and Right-of-Way: Progress Energy Florida & Golder Associates Inc., 2009; Roads: Florida Department of Transportation, 2010; Railroads: FDEP, 1992; Flood Zones: FEMA, 1996; Aerials: Progress Energy, 2009

MAP INDEX



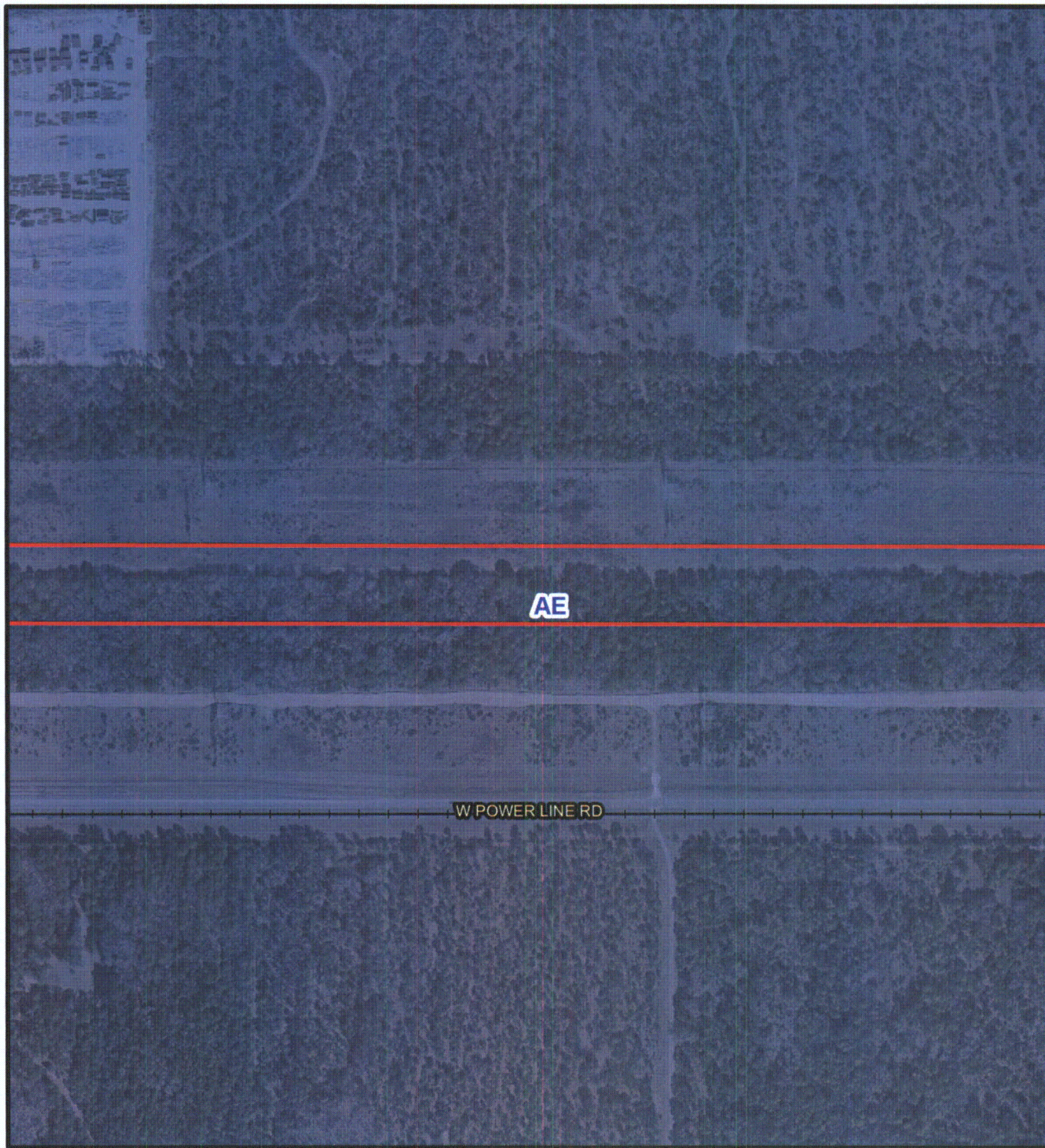
400 200 0 400
 Feet

PROGRESS ENERGY FLORIDA
 LEVY NUCLEAR PLANT

LEVY - CRYSTAL RIVER ENERGY COMPLEX FEMA 100 YEAR FLOODPLAIN MAP



| | | | | |
|----------------------------|-----|-------------|--|-------|
| MXD File No: 093-89547G007 | | | SCALE AS SHOWN | REV 0 |
| DESIGN | JDG | 11 Dec 2009 | FIGURE 7 PAGE 5 OF 10 | |
| GIS | DLH | 04 Mar 2010 | | |
| CHECK | SAR | 04 Mar 2010 | | |
| REVIEW | KB | 04 Mar 2010 | | |



LEGEND

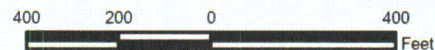
LCR Right-of-Way
FEMA FLOOD ZONES

- A 100-yr Floodplain
(No Base Flood Elevations
have been determined)
- AE 100-yr Floodplain
(Base Flood Elevations
have been determined)
- VE 100-yr Floodplain with
wave velocity

REFERENCE

Substations and Right-of-Way: Progress Energy Florida & Golder Associates Inc., 2009; Roads: Florida Department of Transportation, 2010; Railroads: FDEP, 1992; Flood Zones: FEMA, 1996; Aerials: Progress Energy, 2009

MAP INDEX



PROGRESS ENERGY FLORIDA
 LEVY NUCLEAR PLANT

**LEVY - CRYSTAL RIVER ENERGY COMPLEX
 FEMA 100 YEAR FLOODPLAIN MAP**



| | | | | |
|----------------------------|-----|-------------|--|-------|
| MXD File No: 093-89547G007 | | | SCALE AS SHOWN | REV 0 |
| DESIGN | JDG | 11 Dec 2009 | FIGURE 7 PAGE 6 OF 10 | |
| GIS | DLH | 04 Mar 2010 | | |
| CHECK | SAR | 04 Mar 2010 | | |
| REVIEW | KB | 04 Mar 2010 | | |

F:\PROJECTS\2009\PEFCF Wetland Delineation\T&E Surveys\G - ERP LCR Route\GIS\MXD\093-89547\007 FEMA.mxd



LEGEND

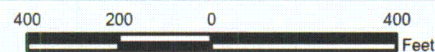
 LCR Right-of-Way
FEMA FLOOD ZONES

- A 100-yr Floodplain
(No Base Flood Elevations
have been determined)
- AE 100-yr Floodplain
(Base Flood Elevations
have been determined)
- VE 100-yr Floodplain with
wave velocity

REFERENCE

Substations and Right-of-Way: Progress Energy Florida & Golder Associates Inc., 2009; Roads: Florida Department of Transportation, 2010; Railroads: FDEP, 1992; Flood Zones: FEMA, 1996; Aerials: Progress Energy, 2009

MAP INDEX



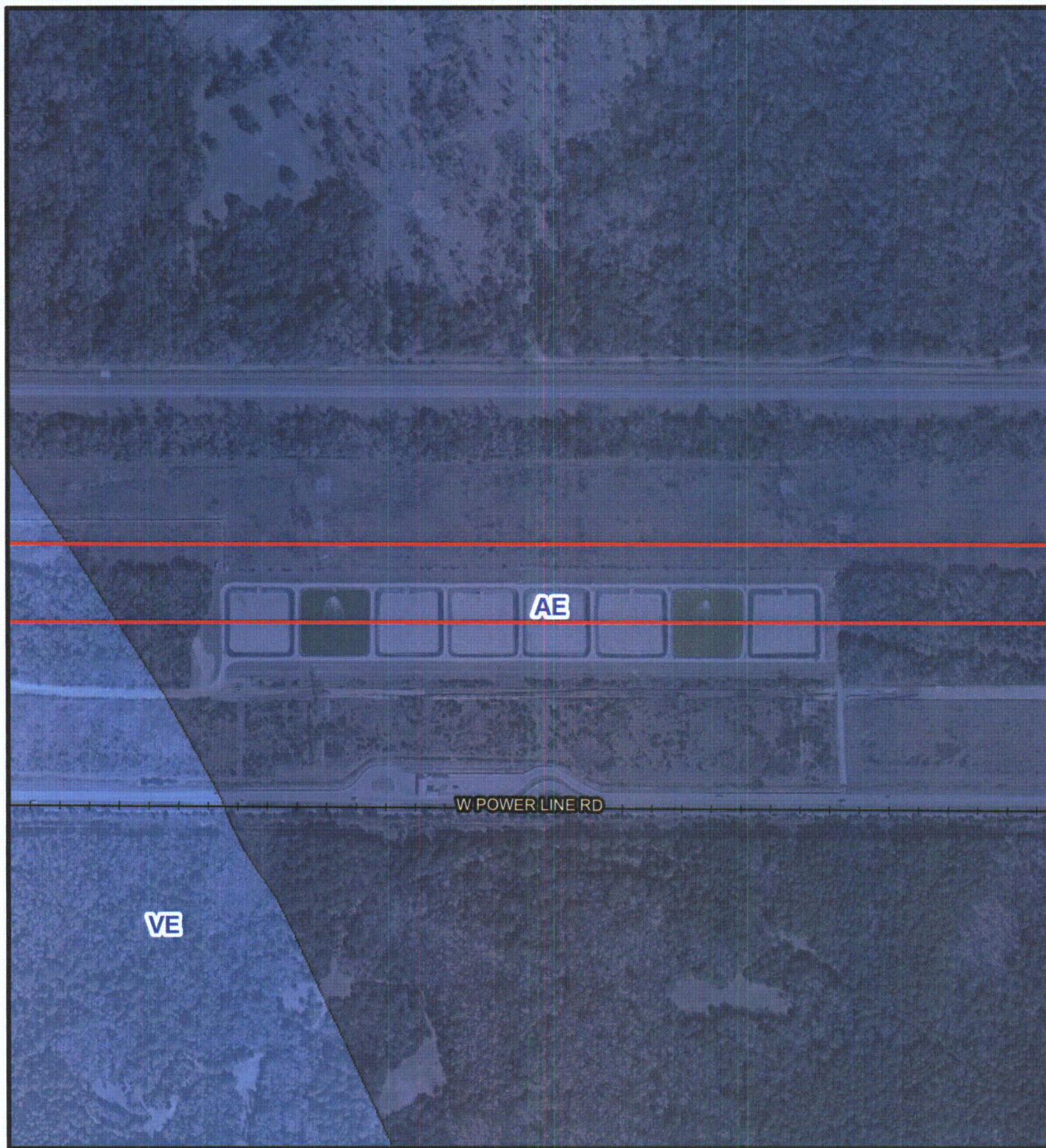
PROGRESS ENERGY FLORIDA
 LEVY NUCLEAR PLANT

LEVY - CRYSTAL RIVER ENERGY COMPLEX FEMA 100 YEAR FLOODPLAIN MAP



| | | | |
|----------------------------|-----|----------------|--|
| MXD File No: 093-895470007 | | SCALE AS SHOWN | REV 0 |
| DESIGN | JDG | 11 Dec 2009 | FIGURE 7 PAGE 7 OF 10 |
| GIS | DLH | 04 Mar 2010 | |
| CHECK | SAR | 04 Mar 2010 | |
| REVIEW | KB | 04 Mar 2010 | |

F:\PROJECTS\2009\03-09-07-PEECF Welland Delineation T&E Surveys\GIS - ERP LCR Route\GIS\MXD\093-89547\G007 FEMA.mxd



LEGEND

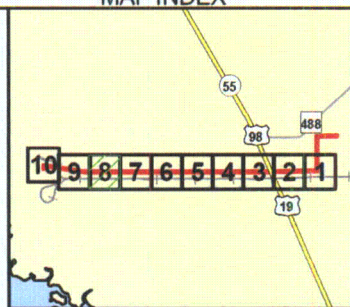
 LCR Right-of-Way
FEMA FLOOD ZONES

- A 100-yr Floodplain
(No Base Flood Elevations
have been determined)
- AE 100-yr Floodplain
(Base Flood Elevations
have been determined)
- VE 100-yr Floodplain with
wave velocity

REFERENCE

Substations and Right-of-Way: Progress Energy Florida & Golder Associates Inc., 2009; Roads: Florida Department of Transportation, 2010; Railroads: FDEP, 1992; Flood Zones: FEMA, 1996; Aerials: Progress Energy, 2009

MAP INDEX



400 200 0 400
 Feet

PROGRESS ENERGY FLORIDA
 LEVY NUCLEAR PLANT

LEVY - CRYSTAL RIVER ENERGY COMPLEX FEMA 100 YEAR FLOODPLAIN MAP



| | | | | |
|----------------------------|-----|-------------|--|-------|
| MXD File No: 093-89547G007 | | | SCALE AS SHOWN | REV 0 |
| DESIGN | JDG | 11 Dec 2009 | FIGURE 7 PAGE 8 OF 10 | |
| GIS | DLH | 04 Mar 2010 | | |
| CHECK | SAR | 04 Mar 2010 | | |
| REVIEW | KB | 04 Mar 2010 | | |

F:\PROJECTS\2009\PEFCF Wetland Delineation\T&E Surveys\G - ERP LCR Route\GIS\WY093-89547\G007 FEMA.mxd



LEGEND

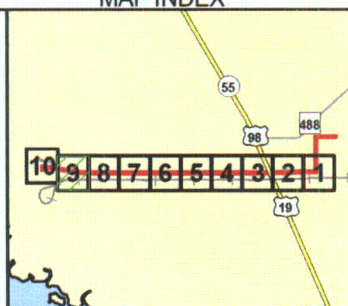
LCR Right-of-Way
FEMA FLOOD ZONES

- A 100-yr Floodplain
(No Base Flood Elevations
have been determined)
- AE 100-yr Floodplain
(Base Flood Elevations
have been determined)
- VE 100-yr Floodplain with
wave velocity

REFERENCE

Substations and Right-of-Way: Progress Energy Florida & Golder Associates Inc., 2009; Roads: Florida Department of Transportation, 2010; Railroads: FDEP, 1992; Flood Zones: FEMA, 1996; Aerials: Progress Energy, 2009

MAP INDEX



400 200 0 400
 Feet

PROGRESS ENERGY FLORIDA
 LEVY NUCLEAR PLANT

LEVY - CRYSTAL RIVER ENERGY COMPLEX FEMA 100 YEAR FLOODPLAIN MAP



| | | | |
|----------------------------|-----|----------------|--|
| MXD File No: 093-89547G007 | | SCALE AS SHOWN | REV. 0 |
| DESIGN | JDG | 11 Dec 2009 | FIGURE 7 PAGE 9 OF 10 |
| GIS | DLH | 04 Mar 2010 | |
| CHECK | SAR | 04 Mar 2010 | |
| REVIEW | KB | 04 Mar 2010 | |



LEGEND

 LCR Right-of-Way

FEMA FLOOD ZONES

- A 100-yr Floodplain
(No Base Flood Elevations
have been determined)
- AE 100-yr Floodplain
(Base Flood Elevations
have been determined)
- VE 100-yr Floodplain with
wave velocity

REFERENCE

Substations and Right-of-Way: Progress Energy Florida & Golder Associates Inc., 2009; Roads: Florida Department of Transportation, 2010; Railroads: FDEP, 1992; Flood Zones: FEMA, 1996; Aerials: Progress Energy, 2009

MAP INDEX



400 200 0 400
Feet

PROGRESS ENERGY FLORIDA
LEVY NUCLEAR PLANT

**LEVY - CRYSTAL RIVER ENERGY COMPLEX
FEMA 100 YEAR FLOODPLAIN MAP**



| | | |
|----------------------------|-----------------|-------|
| MDX File No: 093-89547G007 | SCALE AS SHOWN | REV 0 |
| DESIGN JDC 11 Dec 2009 | FIGURE 7 | |
| GIS DLH 04 Mar 2010 | | |
| CHECK SAR 04 Mar 2010 | | |
| REVIEW KB 04 Mar 2010 | | |