



# Participation Drill – Plume Only

- March 1, 2011
- Bridgman, MI



Donald C. Cook Nuclear Plant



USNRC Region III  
Incident Response Program

## **Safety and Human Performance Guiding Principles**

- 1. All injuries and human errors are preventable.**
- 2. Responsible leadership and employee accountability prevent injuries and human errors.**
- 3. Plan safety and human error reduction into our work.**
- 4. Look out for yourself and each other.**



# Personal Protective Equipment

- EOF, ENC/JIC, SCR, OSC are outside the powerblock and PPE is not required.
- TSC and Damage Control Teams dispatched from the OSC require:  
Hardhat, ANSI footwear with protective toe, safety glasses with installed side shields and hearing protection.





## ■ ***Orientation Goals***

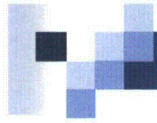
- Plant Overview
- Organizational Match-ups
- Facility Locations
- NRC Incident Response Team Entrance
- Logistics



# D.C. Cook Nuclear Plant

- ❖ Two ~ 1100 Mw Four Loop Westinghouse PWR
- ❖ 10 Mile EPZ is inside Berrien County
- ❖ EAL Scheme –  
NUMARC/NESP-007
- ❖ NUREG-0654 based  
Emergency Plan



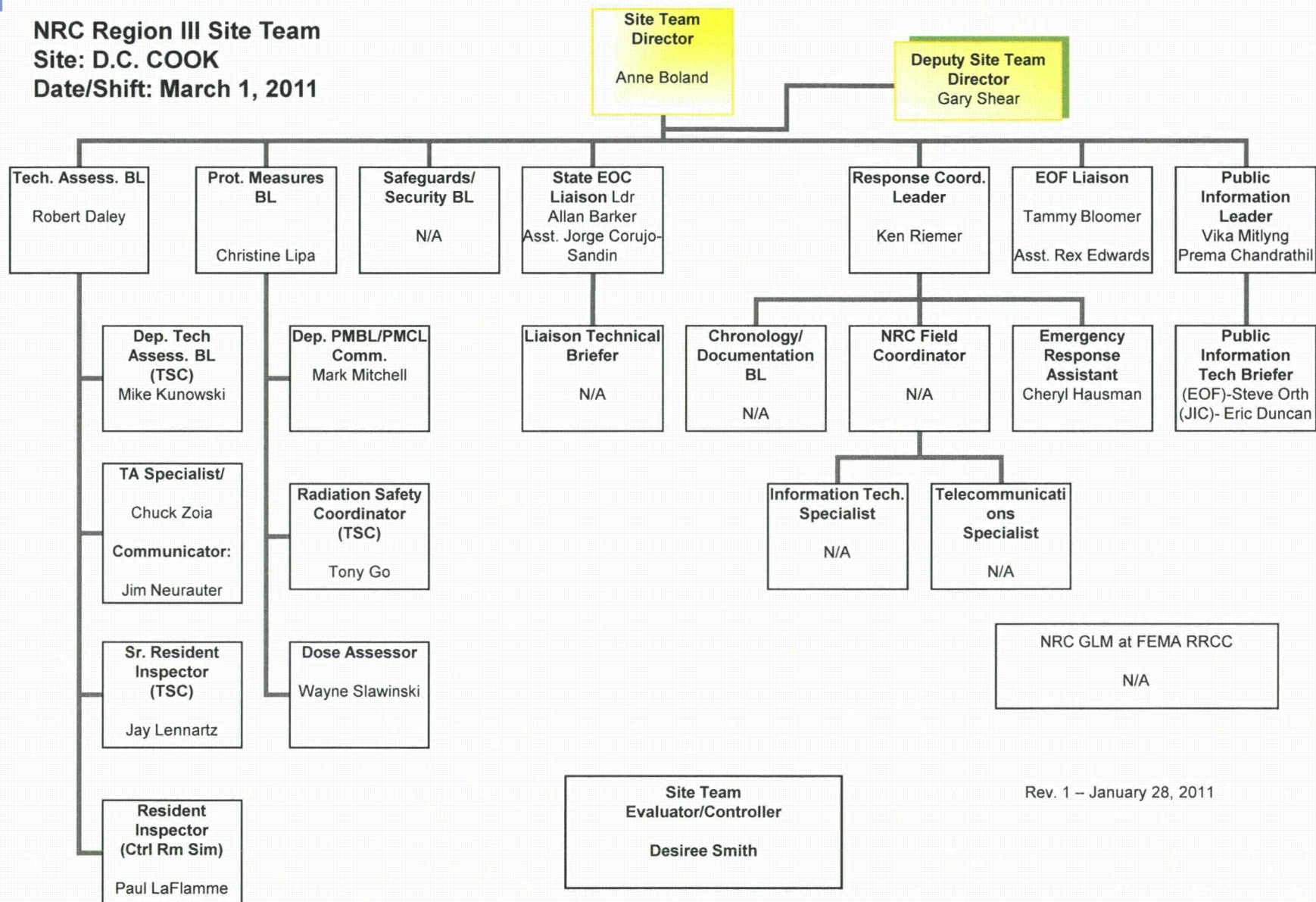


# Organizational Overlay

- NRC IRT and D.C. Cook ERO positions are not perfectly matched
- Aligned positions as closely as possible and arranged seating accordingly
- Extra seating exists. IRT members are encouraged to move to any seat with a **Incident Response Team** sign above the workstation.



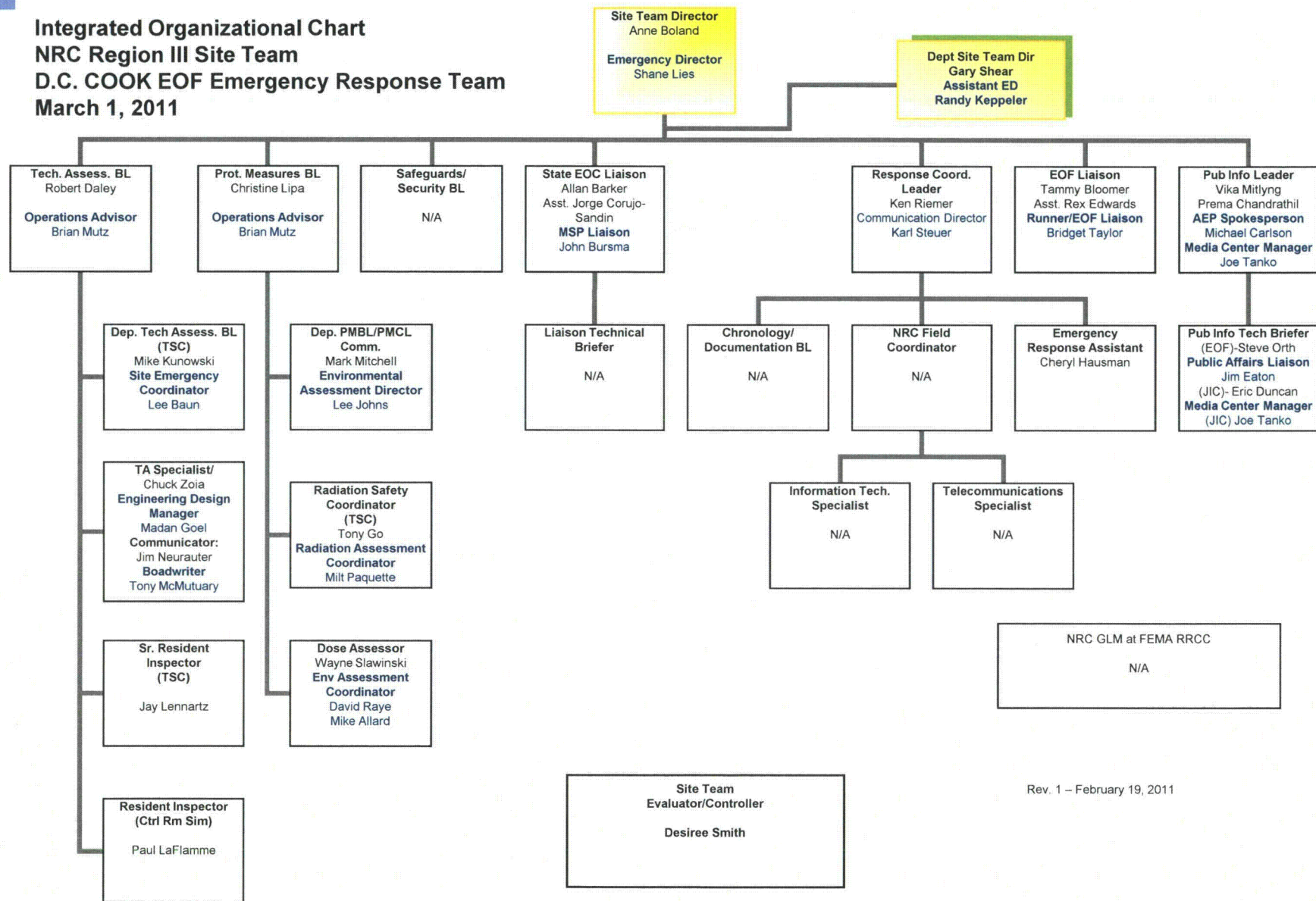
**NRC Region III Site Team**  
**Site: D.C. COOK**  
**Date/Shift: March 1, 2011**



Rev. 1 – January 28, 2011



**Integrated Organizational Chart**  
**NRC Region III Site Team**  
**D.C. COOK EOF Emergency Response Team**  
**March 1, 2011**



Rev. 1 – February 19, 2011

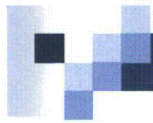


# EOF/JIC

## Sequence of Events

- AEP EOF Liaison will greet NRC in the lobby & escort to 2nd Floor Conference Room
- NRC will await phone call for deployment to briefing area
- When notified, NRC will be escorted to East Entrance and process into briefing area
- Group briefing provided by Assistant Emergency Director
  - Current emergency classification
  - Reason for classification
  - Current plant status
  - Status of radiological release if any
  - Current protective action recommendation, if any
  - Mitigative actions – description and status
  - Challenges
- Questions from the NRC team
- AEP EOF Liaison escorts NRC to the JIC for individual briefings with counterparts
- Asst Emergency Director escorts NRC to the EOF for individual briefings with counterparts





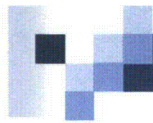
# AEP Nuclear Generation Group

500 Circle Drive

Buchanan, MI 49107





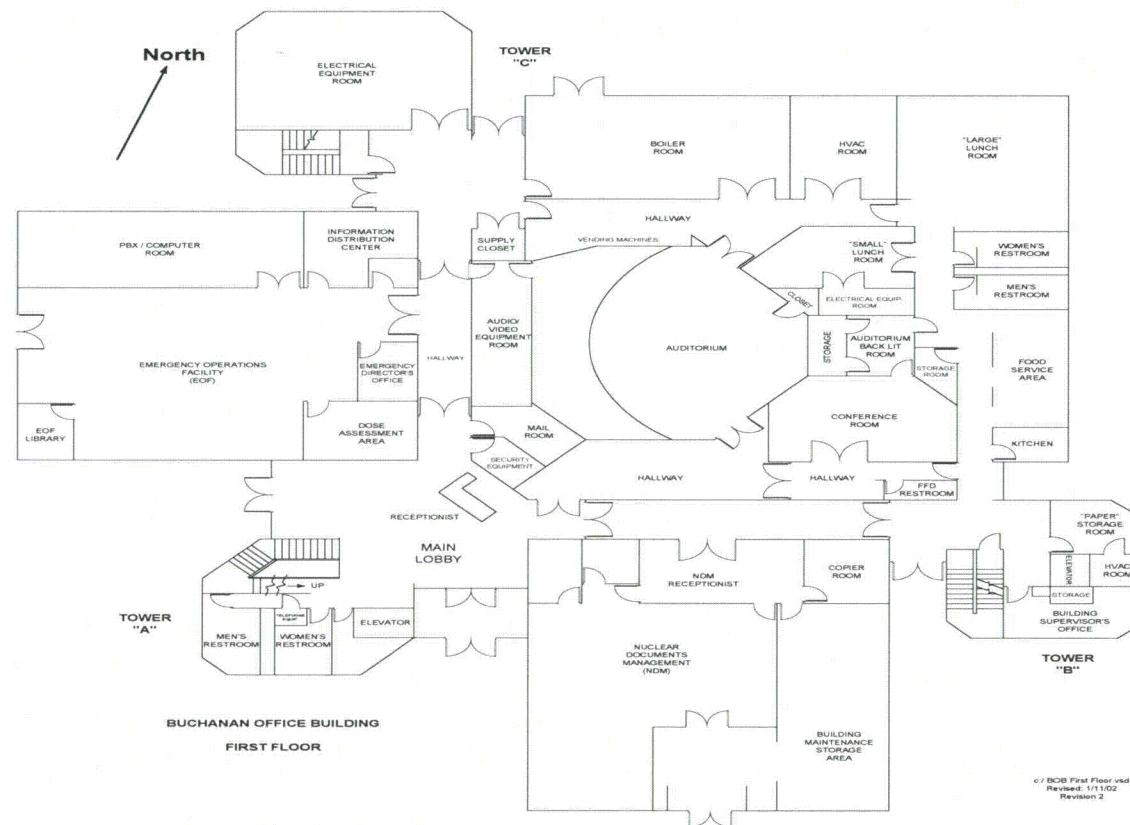


# AEP NGG Building

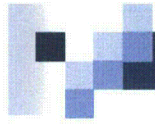
Front of building



# NGG First Floor





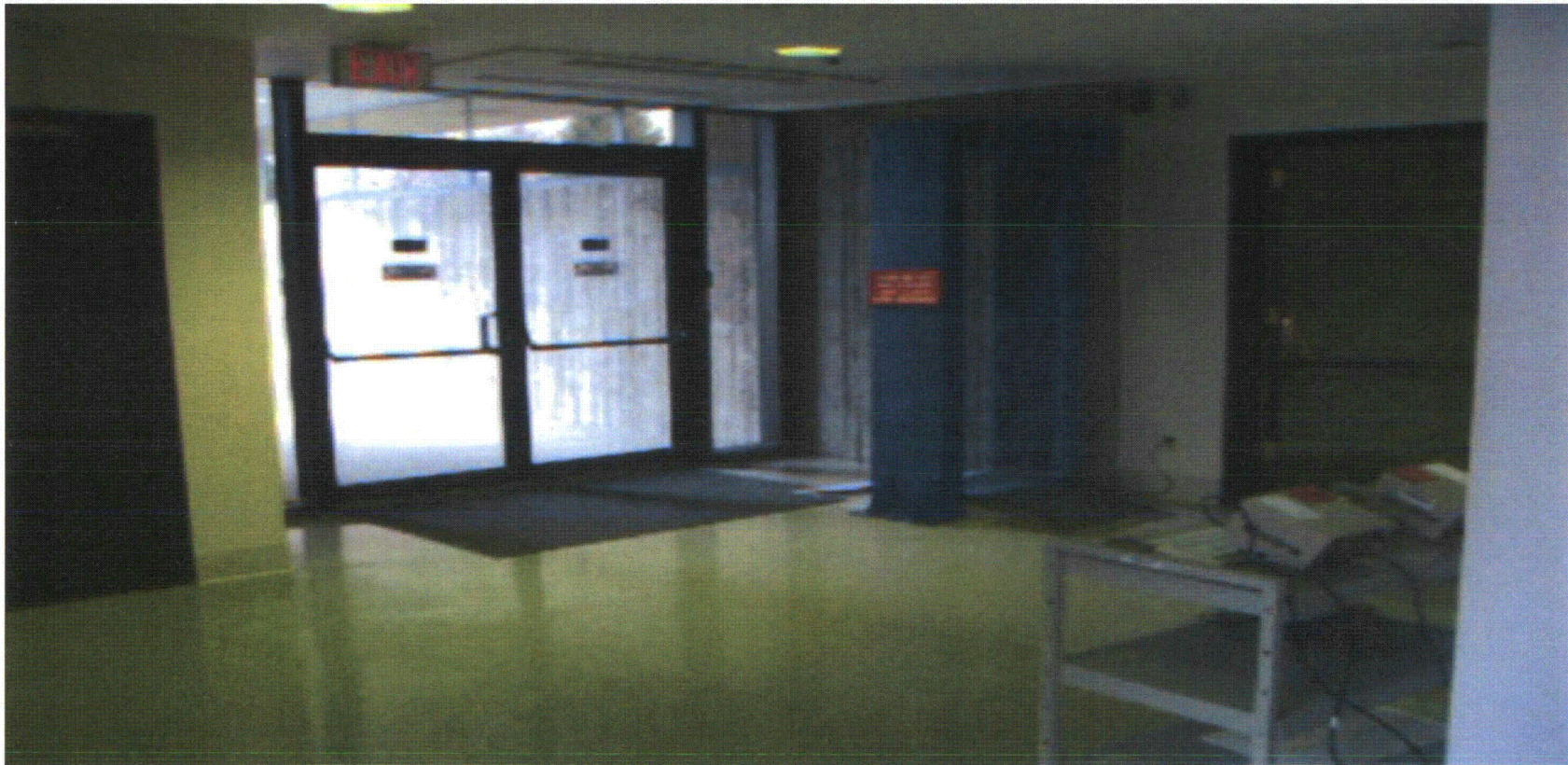


# Front Lobby





# Inside JIC/EOF Entrance



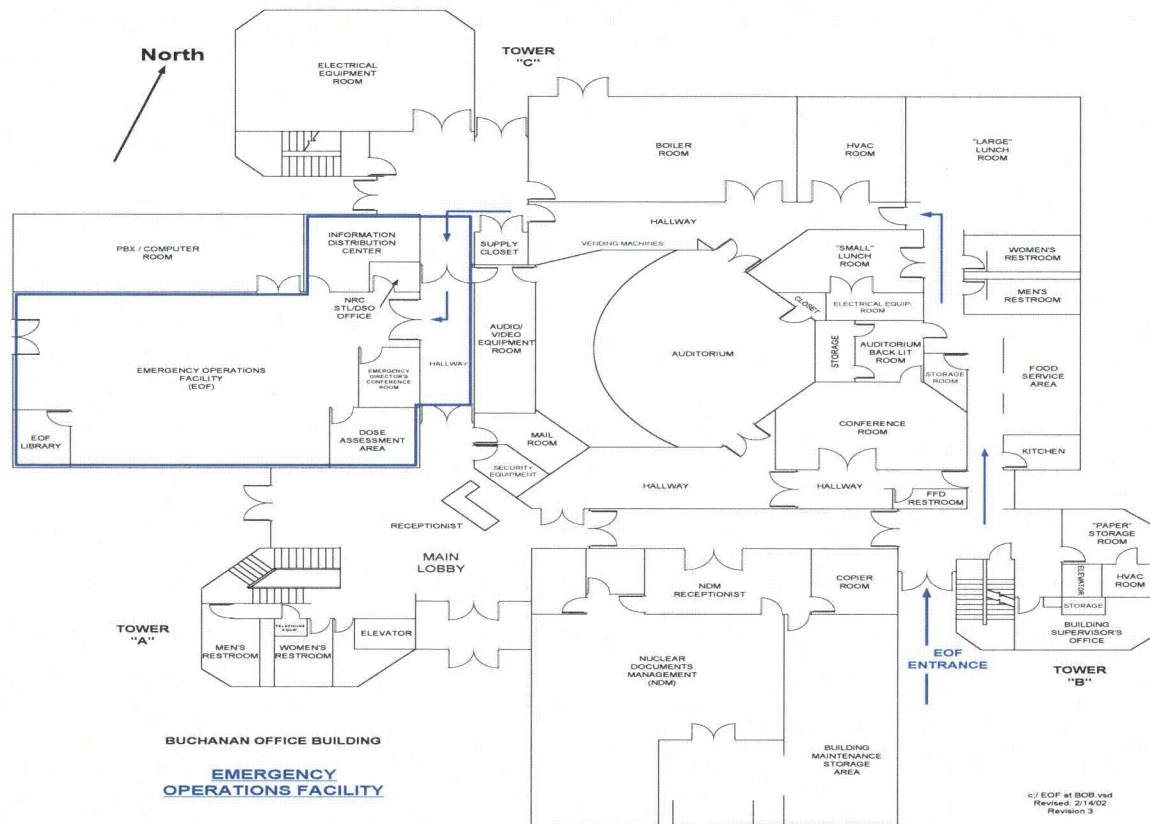


# Briefing Room for the IRT EOF/JIC

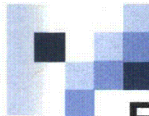




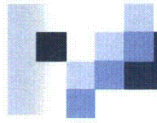
# EOF Layout



c/ EOF at BCB vnd  
Revised 2/14/02  
Revision 3



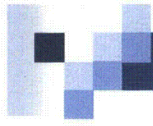




# Emergency Operations Facility





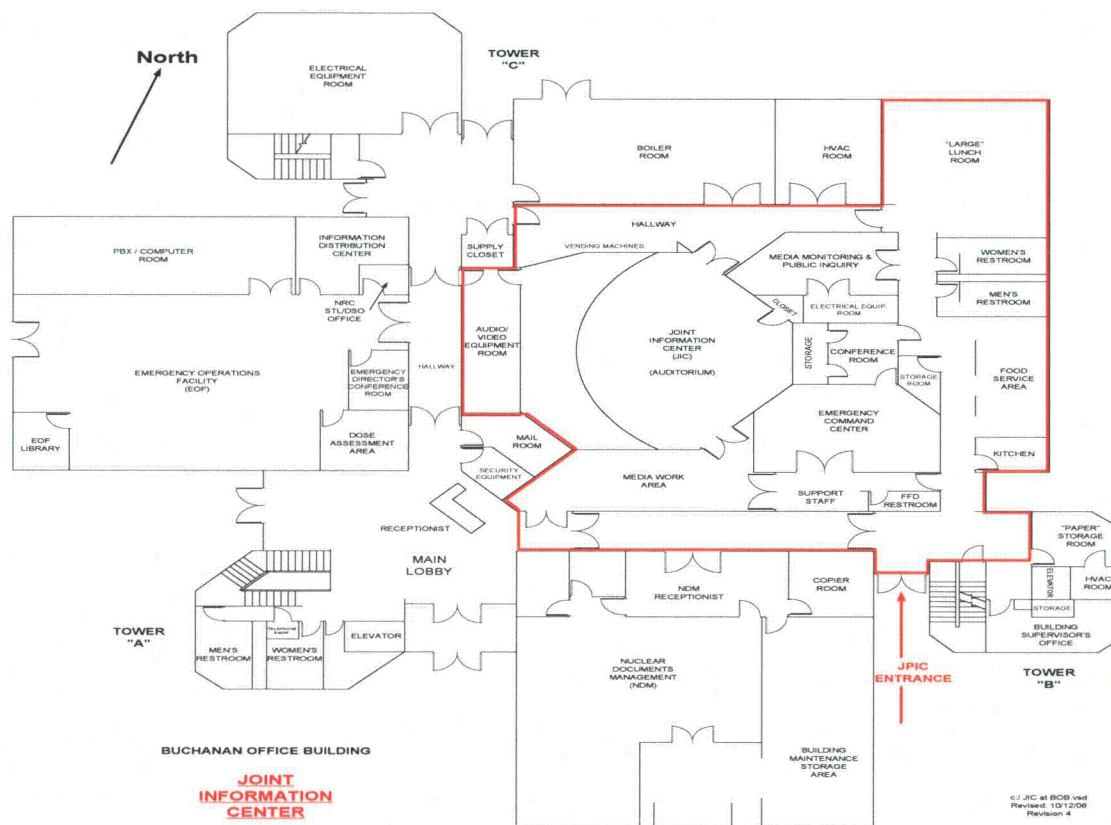


# Dose Assessment Facility



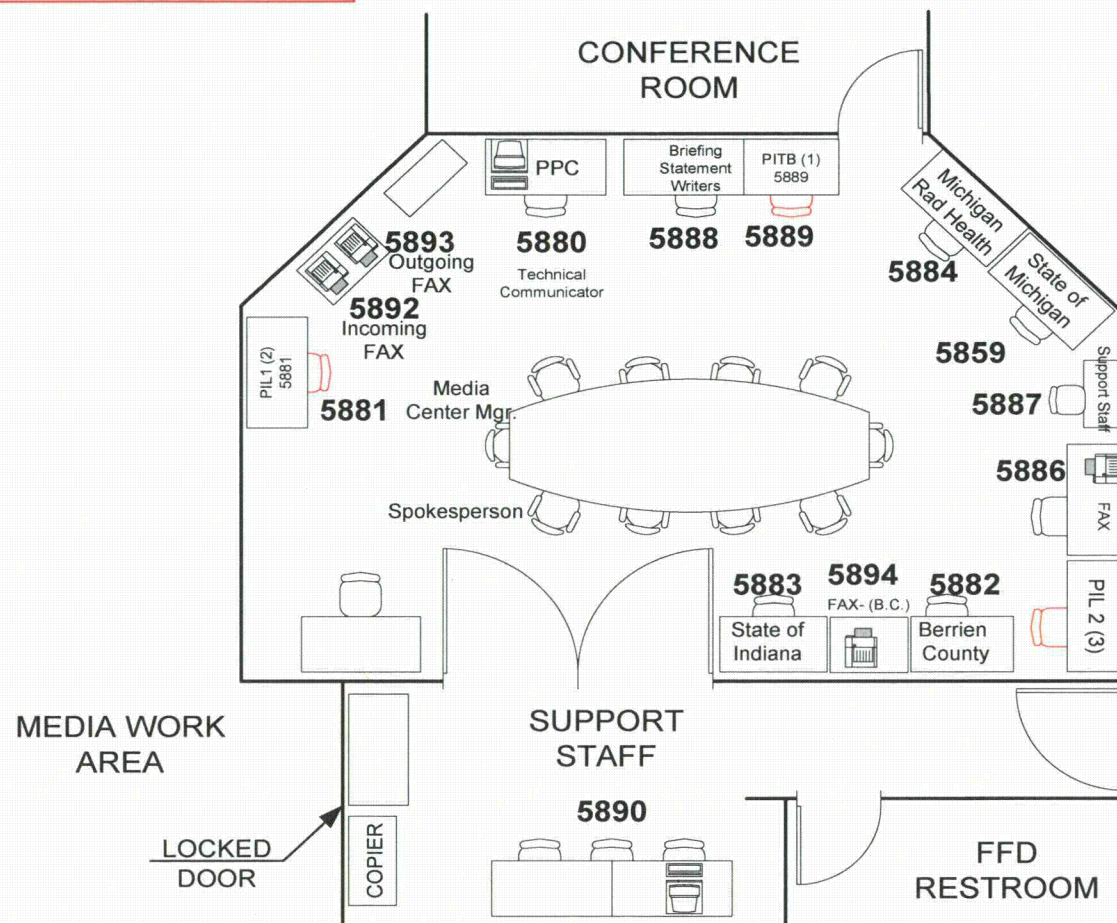


# JIC Layout

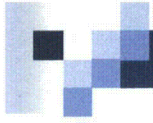


c/ JIC at BOB vnd  
Revised: 10/12/06  
Revision 4

- (1) Public Information Technical Briefer
- (2) Public Information Leader 1
- (3) Public Information Leader 2



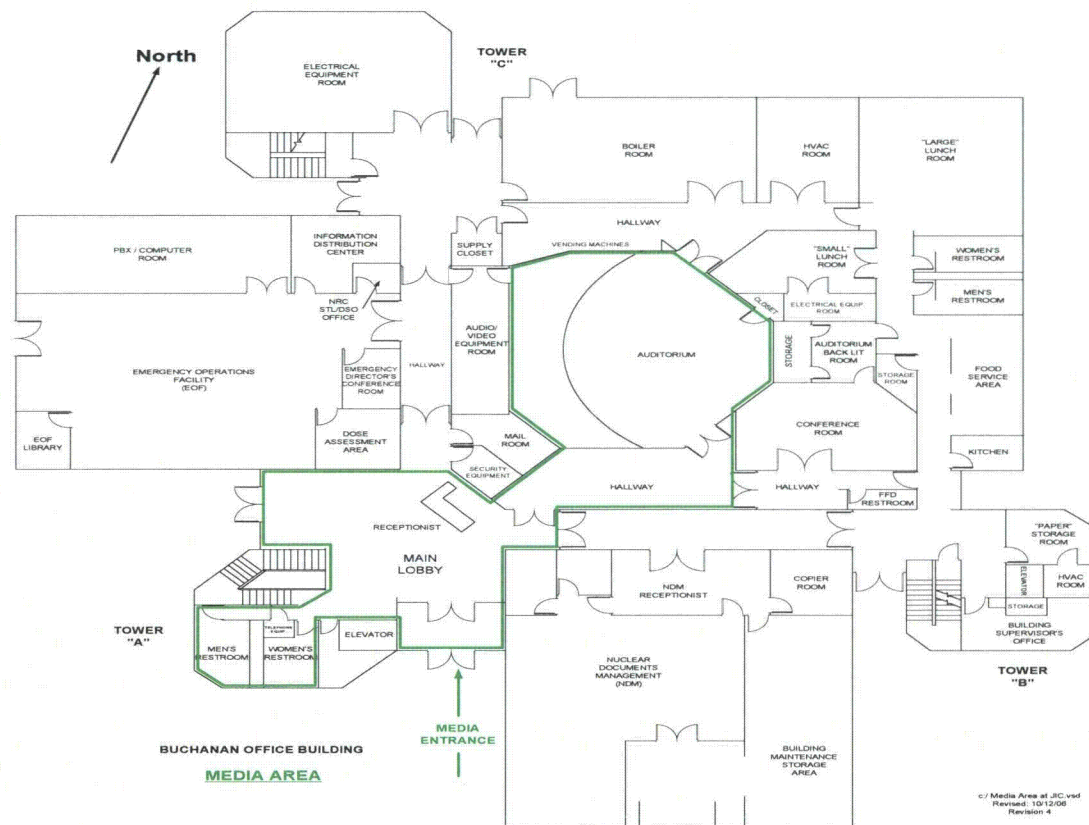




# Joint Information Center



# JIC Media Area





# Media Work Area

Looking back towards BOB Lobby Area





# JIC Auditorium



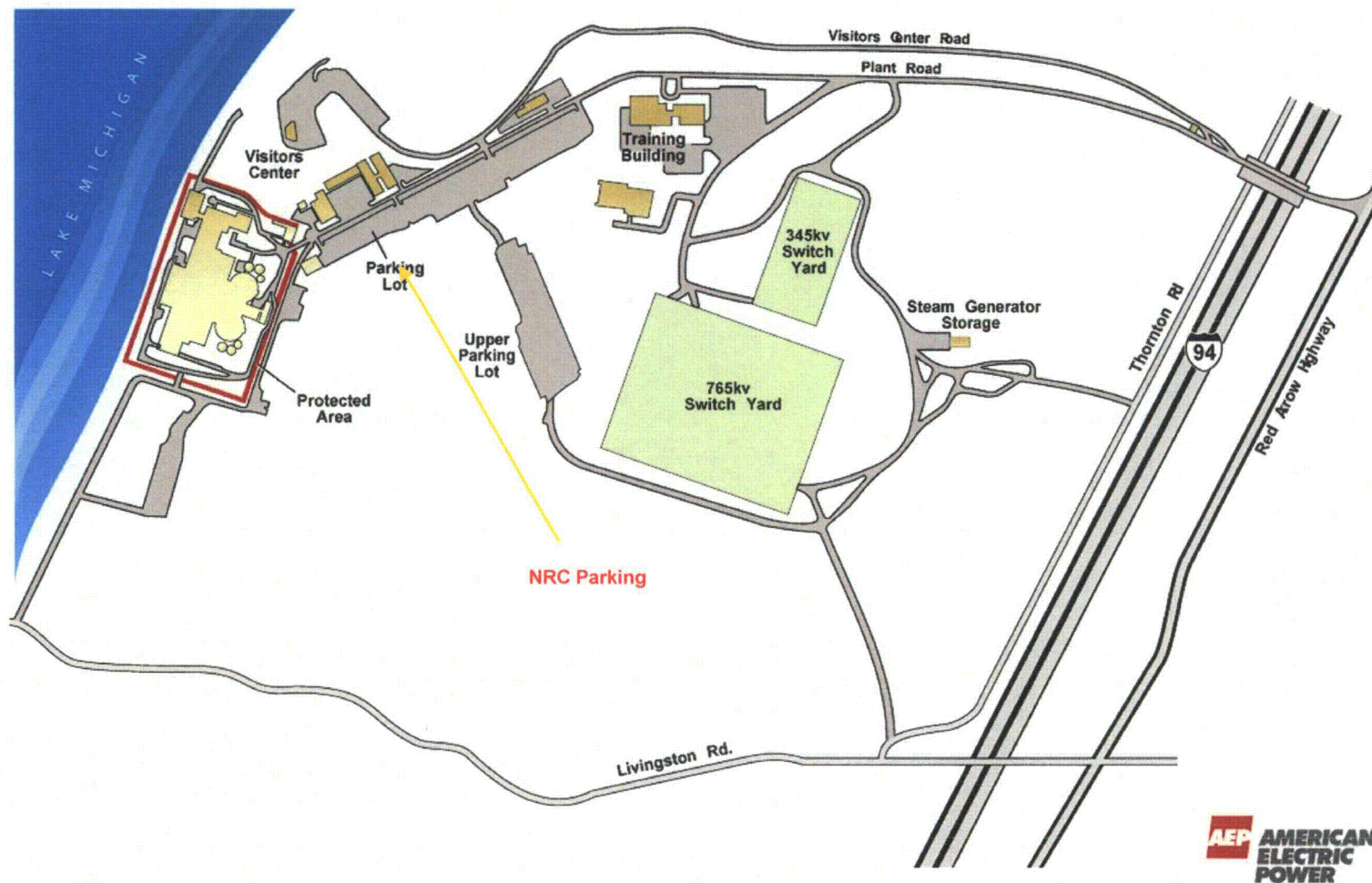




# TSC Sequence of events

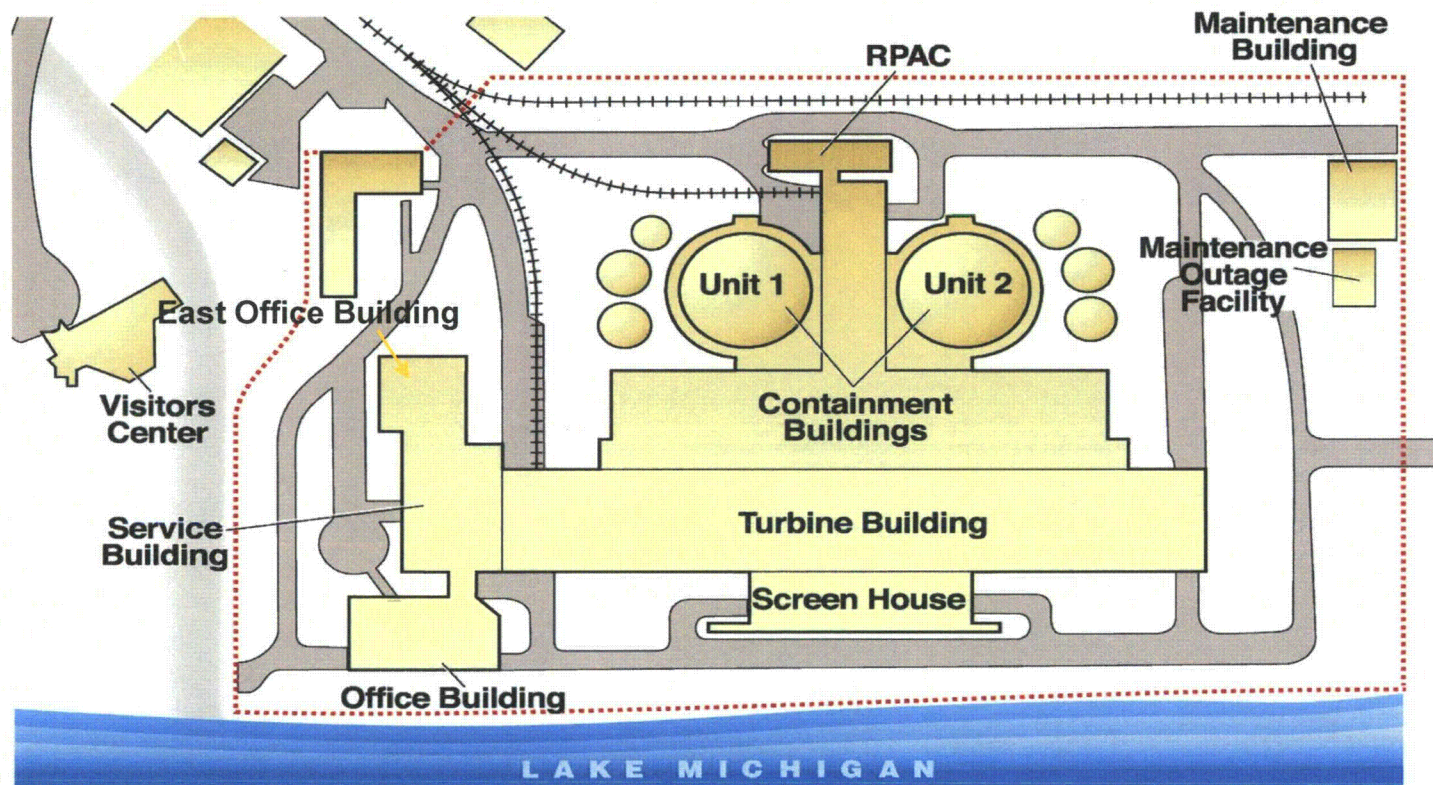
- Deputy Technical Assessment Branch Leader and Radiation Safety Coordinator will meet at the Resident Inspectors Office located in the fourth floor of the East Office Building.
- When deployed, the NRC IRT will be escorted to the TSC by an AEP staff member.
- IRT receives briefing from the Assistant Site Emergency Coordinator
  - Current emergency classification
  - Reason for classification
  - Current plant status
  - Status of radiological release if any
  - Current protective action recommendation, if any
  - Mitigative actions – description and status
  - Challenges
  - Questions from the NRC IRT
  - Assistant Site Emergency Coordinator introduces IRT to TSC ERO

## Cook Nuclear Plant – Site Layout

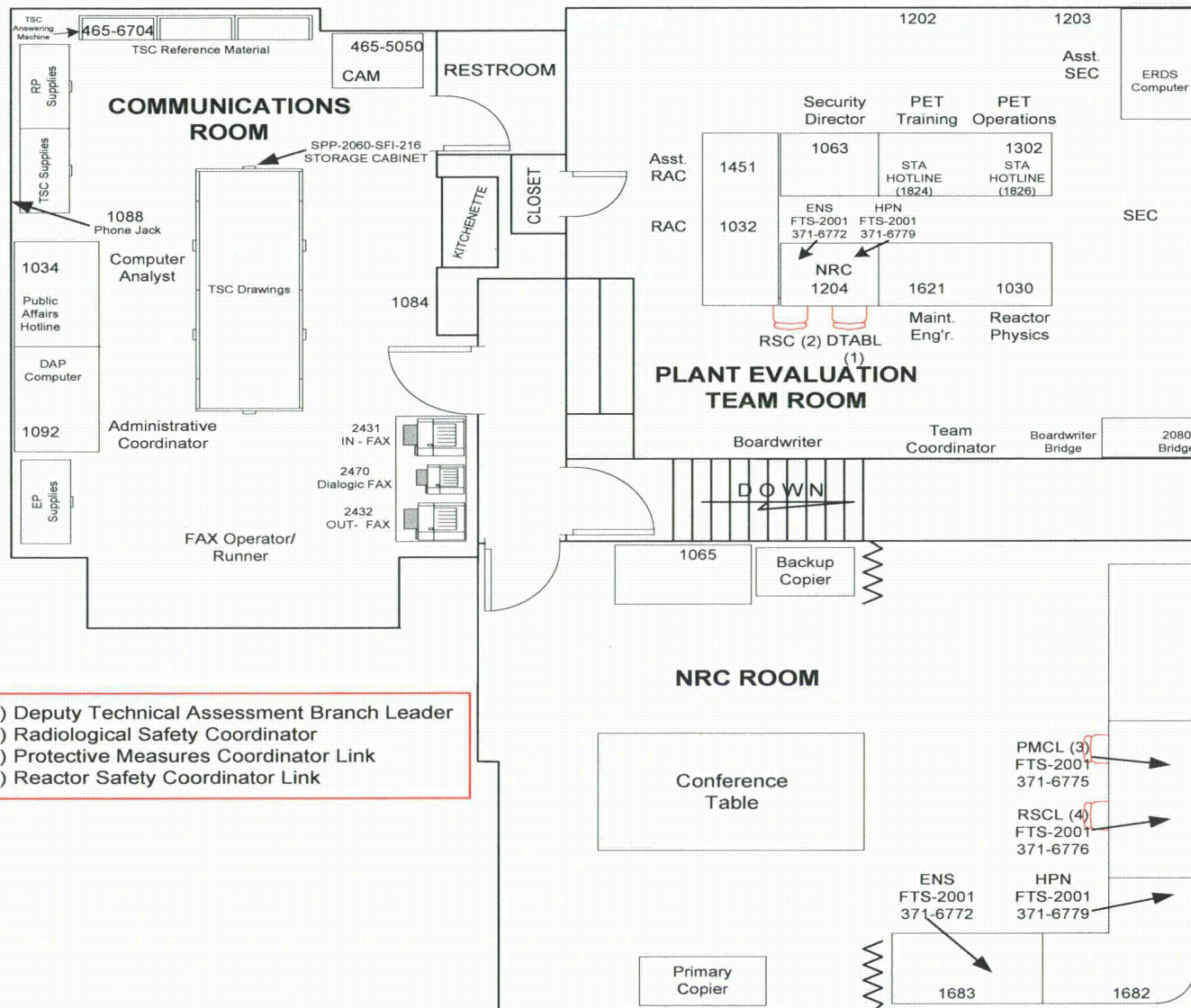




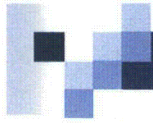
USNRC Residents Office is on the Fourth Floor in the Northeast corner



# TSC







# Logistics – GPS addresses

D. C. Cook Nuclear Plant

One Cook Place

Bridgman, MI 49106

TSC, OSC, SCR

AEP Buchanan Office Building

500 Circle Drive

Buchanan, MI 49107

EOF, ENC/JIC

Contact the CNP Switchboard at (269) 465-5901  
should you need assistance in your travels

# Southwest Michigan

## ■ Driving Distance to Plant

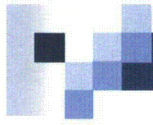
- Lisle, IL 105 miles
- New Buffalo, MI 15 miles
- South Bend, IN 35 miles
- Stevensville, MI 5 miles
- St. Joseph, MI 11 miles

## ■ Driving Distance to the EOF/JIC Buchanan, MI

- Cook Nuclear Plant 19 miles
- Lisle, IL 112 miles
- New Buffalo, MI 27 miles
- South Bend, IN 18 miles
- Stevensville, MI 24 miles
- St. Joseph, MI 22 miles







# Questions?