



LEGEND

- Interstate
- Toll Road
- US Road
- State Road
- + + Railroad
- LCFS Right-of-Way
- County Boundaries

REFERENCE

Substations and Right-of-Way: Progress Energy Florida & Golder Associates Inc., 2009;
 Roads: Florida Department of Transportation, 2010; Railroads: FDEP, 1992; County Boundary:
 U.S. Census Bureau, 2000

PROGRESS ENERGY FLORIDA
 LEVY NUCLEAR PLANT

LEVY - CENTRAL FLORIDA SOUTH HABITAT CLASSIFICATION MAP



MXD File No. 093-89547H005		SCALE AS SHOWN	REV. 0
DESIGN	DLH	16 Nov 2009	
GIS	DLH	24 Feb 2010	
CHECK	SAR	24 Feb 2010	
REVIEW	KB	24 Feb 2010	

**FIGURE 5
 INDEX**



LEGEND

 LCFS Right-of-Way

LAND USE / LAND COVER CODES

- | | |
|---|---|
| 110, RESIDENTIAL, LOW DENSITY | 438, MIXED HARDWOODS |
| 211, IMPROVED PASTURES | 641, FRESHWATER MARSHES |
| 427, LIVE OAK | 814, ROADS AND HIGHWAYS |
| 434, HARDWOOD - CONIFER MIXED | |

REFERENCE

Substations and Right-of-Way: Progress Energy Florida & Golder Associates Inc., 2009; Roads: Florida Department of Transportation, 2010; Railroads: FDEP, 1992; FLUCCS Data: SWFWMD, 2007, Golder edited 2009; Aerials: Progress Energy, 2009

PROGRESS ENERGY FLORIDA
LEVY NUCLEAR PLANT

LEVY - CENTRAL FLORIDA SOUTH HABITAT CLASSIFICATION MAP



MXD File No. 093-89547H005			SCALE AS SHOWN	REV. 0
DESIGN	JDG	16 Dec 2009	FIGURE 5	
GIS	DLH	23 Feb 2010		
CHECK	SAR	23 Feb 2010		
REVIEW	KB	23 Feb 2010		



LEGEND

 LCFS Right-of-Way

LAND USE / LAND COVER CODES

 110, RESIDENTIAL, LOW DENSITY	 438, MIXED HARDWOODS
 211, IMPROVED PASTURES	 641, FRESHWATER MARSHES
 434, HARDWOOD - CONIFER MIXED	 814, ROADS AND HIGHWAYS

REFERENCE

Substations and Right-of-Way: Progress Energy Florida & Golder Associates Inc., 2009; Roads: Florida Department of Transportation, 2010; Railroads: FDEP, 1992; FLUCCS Data: SWFWMD, 2007, Golder edited 2009; Aerials: Progress Energy, 2009

PROGRESS ENERGY FLORIDA
LEVY NUCLEAR PLANT

LEVY - CENTRAL FLORIDA SOUTH HABITAT CLASSIFICATION MAP



MXD File No. 093-89547H005			SCALE AS SHOWN	REV. 0
DESIGN	JOG	16 Dec 2009	FIGURE 5 PAGE 2 OF 178	
GIS	DLH	23 Feb 2010		
CHECK	SAR	23 Feb 2010		
REVIEW	KB	23 Feb 2010		



LEGEND

LCFS Right-of-Way

LAND USE / LAND COVER CODES

 211, IMPROVED PASTURES	 421, XERIC OAK
 320, SHRUB AND BRUSHLAND	 434, HARDWOOD - CONIFER MIXED
 330, MIXED RANGELAND	 618, WILLOW AND ELDERBERRY

REFERENCE

Substations and Right-of-Way: Progress Energy Florida & Golder Associates Inc., 2009; Roads: Florida Department of Transportation, 2010; Railroads: FDEP, 1992; FLUCCS Data: SWFWMD, 2007, Golder edited 2009; Aerials: Progress Energy, 2009

PROGRESS ENERGY FLORIDA
LEVY NUCLEAR PLANT

LEVY - CENTRAL FLORIDA SOUTH HABITAT CLASSIFICATION MAP



MXD File No. 093-89547H005		SCALE AS SHOWN	REV. 0
DESIGN	JOG	16 Dec 2009	FIGURE 5 PAGE 3 OF 178
GIS	DLH	23 Feb 2010	
CHECK	SAR	23 Feb 2010	
REVIEW	KB	23 Feb 2010	



LEGEND

 LCFS Right-of-Way

LAND USE / LAND COVER CODES

 110, RESIDENTIAL, LOW DENSITY	 434, HARDWOOD - CONIFER MIXED
 211, IMPROVED PASTURES	 643, WET PRAIRIES
 212, UNIMPROVED PASTURES	 812, RAILROADS
 421, XERIC OAK	

REFERENCE

Substations and Right-of-Way: Progress Energy Florida & Golder Associates Inc., 2009; Roads: Florida Department of Transportation, 2010; Railroads: FDEP, 1992; FLUCCS Data: SWFWMD, 2007, Golder edited 2009; Aerials: Progress Energy, 2009

200 100 0 200
Feet

PROGRESS ENERGY FLORIDA
LEVY NUCLEAR PLANT

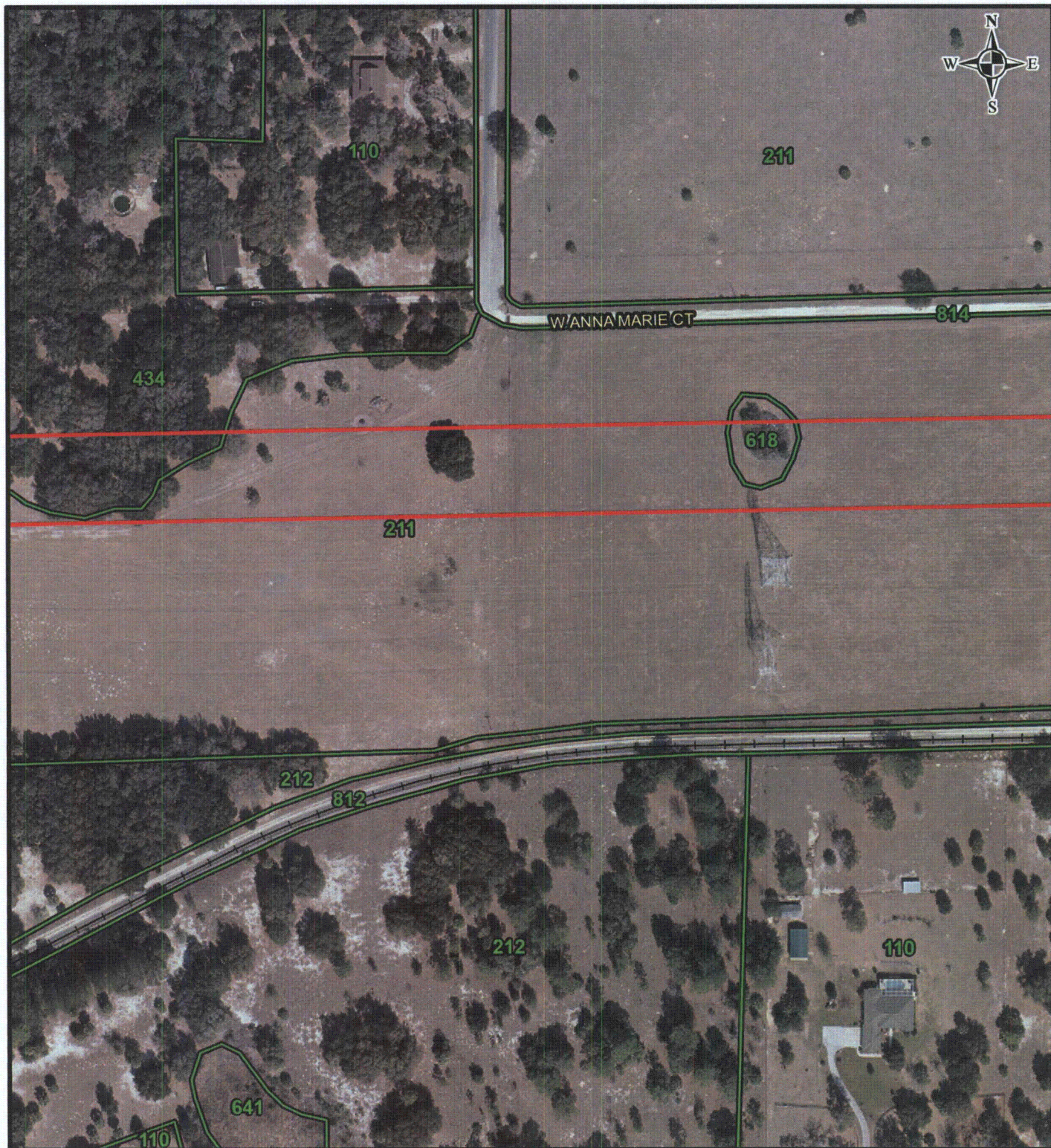
LEVY - CENTRAL FLORIDA SOUTH HABITAT CLASSIFICATION MAP



Progress Energy

MXD File No. 093-89547H005			SCALE AS SHOWN	REV. 0
DESIGN	JDG	16 Dec 2009	FIGURE 5	
GIS	DLH	23 Feb 2010		
CHECK	SAR	23 Feb 2010		
REVIEW	KB	23 Feb 2010		

PAGE 4 OF 178



LEGEND

LCFS Right-of-Way

LAND USE / LAND COVER CODES

 110, RESIDENTIAL, LOW DENSITY	 618, WILLOW AND ELDERBERRY
 211, IMPROVED PASTURES	 641, FRESHWATER MARSHES
 212, UNIMPROVED PASTURES	 812, RAILROADS
 434, HARDWOOD - CONIFER MIXED	 814, ROADS AND HIGHWAYS

REFERENCE

Substations and Right-of-Way: Progress Energy Florida & Golder Associates Inc., 2009; Roads: Florida Department of Transportation, 2010; Railroads: FDEP, 1992; FLUCCS Data: SWFWMD, 2007, Golder edited 2009; Aerials: Progress Energy, 2009

200 100 0 200
Feet

PROGRESS ENERGY FLORIDA
LEVY NUCLEAR PLANT

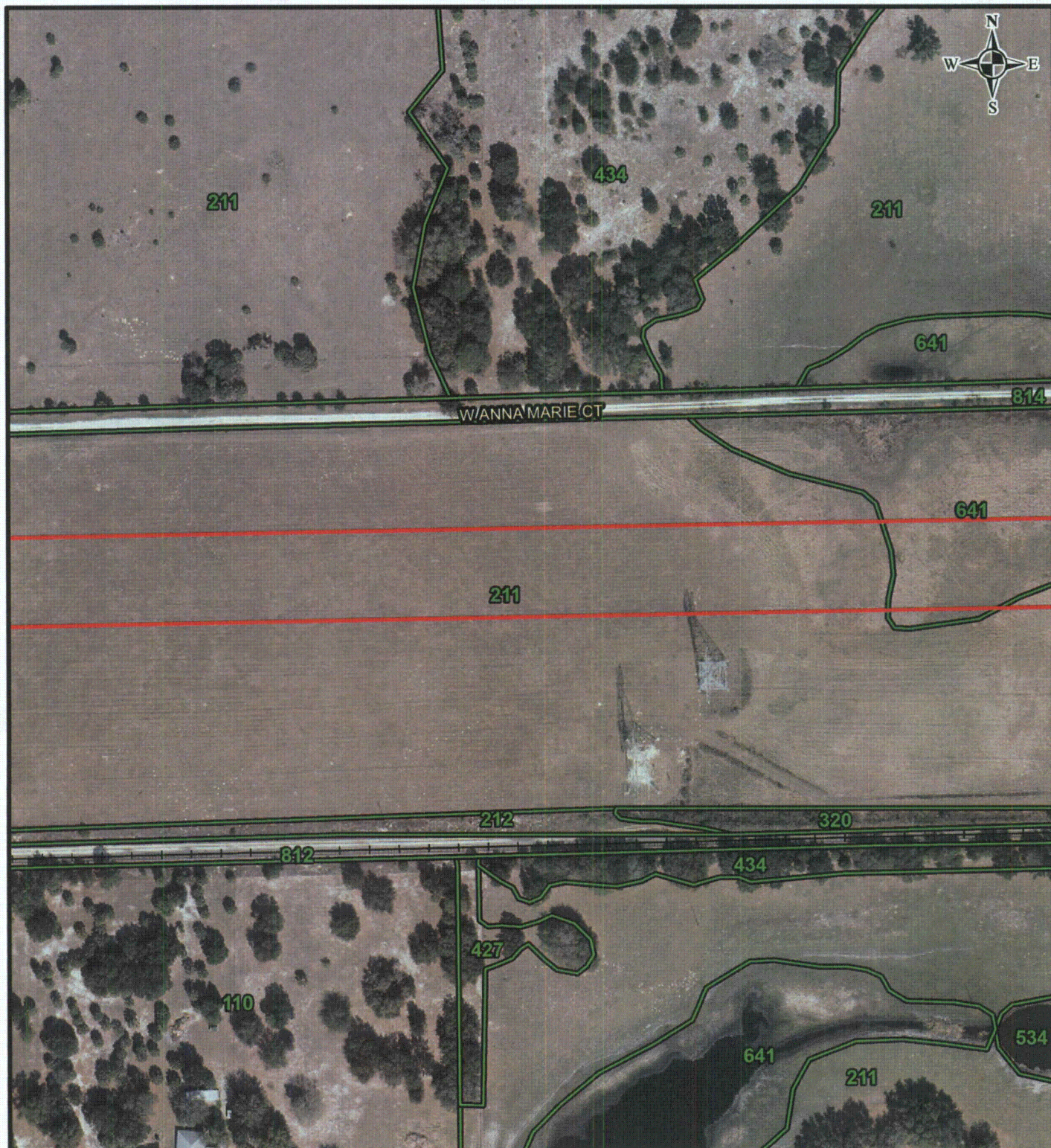
LEVY - CENTRAL FLORIDA SOUTH HABITAT CLASSIFICATION MAP



MXD File No. 093-89547H005		SCALE AS SHOWN	REV. 0
DESIGN	JDG	16 Dec 2009	
GIS	DLH	23 Feb 2010	
CHECK	SAR	23 Feb 2010	
REVIEW	KB	23 Feb 2010	

FIGURE 5

PAGE 5 OF 178



LEGEND

LCFS Right-of-Way

LAND USE / LAND COVER CODES

 110, RESIDENTIAL, LOW DENSITY	 434, HARDWOOD - CONIFER MIXED
 211, IMPROVED PASTURES	 534, RESERVOIRS <10 ACRES
 212, UNIMPROVED PASTURES	 641, FRESHWATER MARSHES
 320, SHRUB AND BRUSHLAND	 812, RAILROADS
 427, LIVE OAK	 814, ROADS AND HIGHWAYS

REFERENCE

Substations and Right-of-Way: Progress Energy Florida & Golder Associates Inc., 2009; Roads: Florida Department of Transportation, 2010; Railroads: FDEP, 1992; FLUCCS Data: SWFWMD, 2007, Golder edited 2009; Aerials: Progress Energy, 2009

200 100 0 200
Feet

PROGRESS ENERGY FLORIDA
LEVY NUCLEAR PLANT

LEVY - CENTRAL FLORIDA SOUTH HABITAT CLASSIFICATION MAP



MXD File No. 003-89547H005			SCALE AS SHOWN	REV. 0
DESIGN	JDG	16 Dec 2009	FIGURE 5	
GIS	DLH	23 Feb 2010		
CHECK	SAR	23 Feb 2010		
REVIEW	KB	23 Feb 2010		

PAGE 6 OF 178



LEGEND

 LCFS Right-of-Way

LAND USE / LAND COVER CODES

 211, IMPROVED PASTURES	 534, RESERVOIRS <10 ACRES
 212, UNIMPROVED PASTURES	 641, FRESHWATER MARSHES
 320, SHRUB AND BRUSHLAND	 643, WET PRAIRIES
 427, LIVE OAK	 812, RAILROADS
 434, HARDWOOD - CONIFER MIXED	 814, ROADS AND HIGHWAYS
 511, DITCHES	

REFERENCE

Substations and Right-of-Way: Progress Energy Florida & Golder Associates Inc., 2009; Roads: Florida Department of Transportation, 2010; Railroads: FDEP, 1992; FLUCCS Data: SWFWMD, 2007, Golder edited 2009; Aerials: Progress Energy, 2009

200 100 0 200
Feet

PROGRESS ENERGY FLORIDA
LEVY NUCLEAR PLANT

LEVY - CENTRAL FLORIDA SOUTH HABITAT CLASSIFICATION MAP



MXD File No. 093-89547H005			SCALE AS SHOWN	REV. 0
DESIGN	JDG	16 Dec 2009	FIGURE 5	
GIS	DLH	23 Feb 2010		
CHECK	SAR	23 Feb 2010		
REVIEW	KB	23 Feb 2010		

FIGURE 5
PAGE 7 OF 178



LEGEND

LCFS Right-of-Way

LAND USE / LAND COVER CODES

 110, RESIDENTIAL, LOW DENSITY	 641, FRESHWATER MARSHES
 211, IMPROVED PASTURES	 643, WET PRAIRIES
 212, UNIMPROVED PASTURES	 644, EMERGENT AQUATIC VEGETATION
 427, LIVE OAK	 812, RAILROADS
 434, HARDWOOD - CONIFER MIXED	 814, ROADS AND HIGHWAYS

REFERENCE

Substations and Right-of-Way: Progress Energy Florida & Golder Associates Inc., 2009; Roads: Florida Department of Transportation, 2010; Railroads: FDEP, 1992; FLUCCS Data: SWFWMD, 2007, Golder edited 2009; Aerials: Progress Energy, 2009

200 100 0 200
Feet

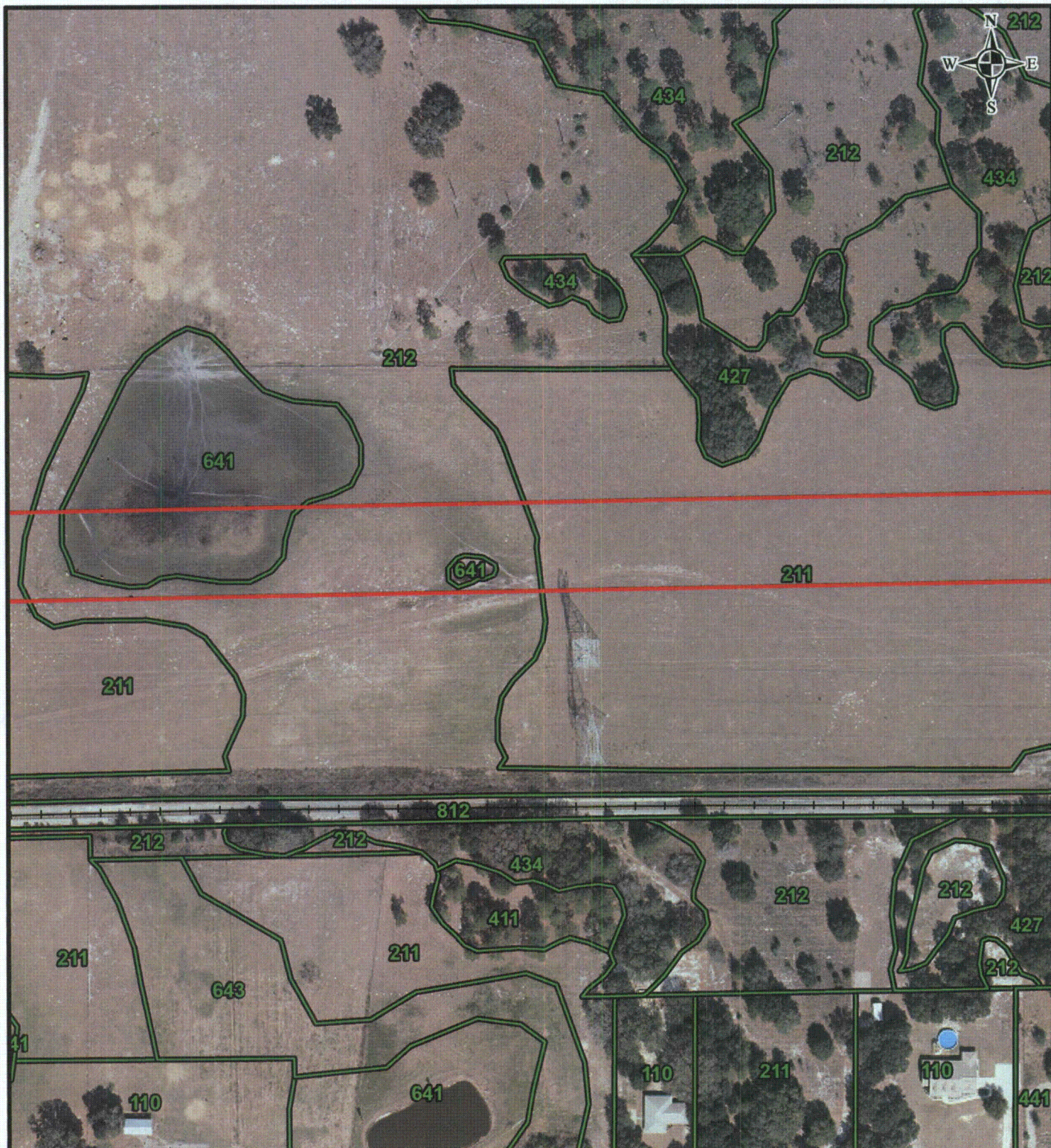
PROGRESS ENERGY FLORIDA
LEVY NUCLEAR PLANT

LEVY - CENTRAL FLORIDA SOUTH HABITAT CLASSIFICATION MAP



MXD File No. 003-89547H005			SCALE AS SHOWN	REV. 0
DESIGN	JDG	16 Dec 2009	FIGURE 5	
GIS	DLH	23 Feb 2010		
CHECK	SAR	23 Feb 2010		
REVIEW	KB	23 Feb 2010		

PAGE 8 OF 178



LEGEND

LCFS Right-of-Way

LAND USE / LAND COVER CODES

 110, RESIDENTIAL, LOW DENSITY	 434, HARDWOOD - CONIFER MIXED
 211, IMPROVED PASTURES	 441, CONIFEROUS PLANTATIONS
 212, UNIMPROVED PASTURES	 641, FRESHWATER MARSHES
 411, PINE FLATWOODS	 643, WET PRAIRIES
 427, LIVE OAK	 812, RAILROADS

REFERENCE

Substations and Right-of-Way: Progress Energy Florida & Golder Associates Inc., 2009; Roads: Florida Department of Transportation, 2010; Railroads: FDEP, 1992; FLUCCS Data: SWFWMD, 2007, Golder edited 2009; Aerials: Progress Energy, 2009

200 100 0 200
Feet

PROGRESS ENERGY FLORIDA
LEVY NUCLEAR PLANT

LEVY - CENTRAL FLORIDA SOUTH HABITAT CLASSIFICATION MAP



MXD File No. 093-89547H005	SCALE AS SHOWN	REV. 0
DESIGN JIG 16 Dec 2009	FIGURE 5	
GIS DLH 23 Feb 2010		
CHECK SAR 23 Feb 2010		
REVIEW KB 23 Feb 2010		



LEGEND

LCFS Right-of-Way

LAND USE / LAND COVER CODES

 110, RESIDENTIAL, LOW DENSITY	 427, LIVE OAK
 211, IMPROVED PASTURES	 434, HARDWOOD - CONIFER MIXED
 212, UNIMPROVED PASTURES	 441, CONIFEROUS PLANTATIONS
 411, PINE FLATWOODS	 812, RAILROADS

REFERENCE

Substations and Right-of-Way: Progress Energy Florida & Golder Associates Inc., 2009; Roads: Florida Department of Transportation, 2010; Railroads: FDEP, 1992; FLUCCS Data: SWFWMD, 2007, Golder edited 2009; Aerials: Progress Energy, 2009

PROGRESS ENERGY FLORIDA
LEVY NUCLEAR PLANT

LEVY - CENTRAL FLORIDA SOUTH HABITAT CLASSIFICATION MAP



MXD File No. 093-89547\005			
DESIGN	JDG	16 Dec 2009	
GIS	DLH	23 Feb 2010	
CHECK	SAR	23 Feb 2010	
REVIEW	KB	23 Feb 2010	

SCALE AS SHOWN REV. 0

FIGURE 5

PAGE 10 OF 178



LEGEND

 LCFS Right-of-Way

LAND USE / LAND COVER CODES

 140, COMMERCIAL AND SERVICES	 411, PINE FLATWOODS
 150, INDUSTRIAL	 434, HARDWOOD - CONIFER MIXED
 170, INSTITUTIONAL	 812, RAILROADS
 211, IMPROVED PASTURES	 814, ROADS AND HIGHWAYS
 212, UNIMPROVED PASTURES	

REFERENCE

Substations and Right-of-Way: Progress Energy Florida & Golder Associates Inc., 2009; Roads: Florida Department of Transportation, 2010; Railroads: FDEP, 1992; FLUCCS Data: SWFWMD, 2007, Golder edited 2009; Aerials: Progress Energy, 2009

200 100 0 200
Feet

PROGRESS ENERGY FLORIDA
LEVY NUCLEAR PLANT

LEVY - CENTRAL FLORIDA SOUTH HABITAT CLASSIFICATION MAP



MXD File No. 093-89547H005	SCALE AS SHOWN	REV. 0
DESIGN JDG 16 Dec 2009	FIGURE 5	
GIS DLH 23 Feb 2010		
CHECK SAR 23 Feb 2010		
REVIEW KB 23 Feb 2010		



LEGEND

LCFS Right-of-Way

LAND USE / LAND COVER CODES

 150, INDUSTRIAL	 411, PINE FLATWOODS
 211, IMPROVED PASTURES	 434, HARDWOOD - CONIFER MIXED
 212, UNIMPROVED PASTURES	 812, RAILROADS
 321, PALMETTO PRAIRIES	 814, ROADS AND HIGHWAYS

REFERENCE

Substations and Right-of-Way: Progress Energy Florida & Golder Associates Inc., 2009; Roads: Florida Department of Transportation, 2010; Railroads: FDEP, 1992; FLUCCS Data: SWFWMD, 2007, Golder edited 2009; Aerials: Progress Energy, 2009

200 100 0 200
Feet

PROGRESS ENERGY FLORIDA
LEVY NUCLEAR PLANT

LEVY - CENTRAL FLORIDA SOUTH HABITAT CLASSIFICATION MAP



MXD File No. 093-89547H005			SCALE AS SHOWN	REV. 0
DESIGN	JDG	16 Dec 2009	FIGURE 5 PAGE 12 OF 178	
GIS	DLH	23 Feb 2010		
CHECK	SAR	23 Feb 2010		
REVIEW	KB	23 Feb 2010		



LEGEND

 LCFS Right-of-Way

LAND USE / LAND COVER CODES

 110, RESIDENTIAL, LOW DENSITY	 421, XERIC OAK
 211, IMPROVED PASTURES	 434, HARDWOOD - CONIFER MIXED
 212, UNIMPROVED PASTURES	 814, ROADS AND HIGHWAYS
 412, LONGLEAF PINE - XERIC OAK	

REFERENCE

Substations and Right-of-Way: Progress Energy Florida & Golder Associates Inc., 2009; Roads: Florida Department of Transportation, 2010; Railroads: FDEP, 1992; FLUCCS Data: SWFWMD, 2007, Golder edited 2009; Aerials: Progress Energy, 2009

200 100 0 200
Feet

PROGRESS ENERGY FLORIDA
LEVY NUCLEAR PLANT

LEVY - CENTRAL FLORIDA SOUTH HABITAT CLASSIFICATION MAP



MXD File No. 093-89547\H005			SCALE AS SHOWN	REV. 0
DESIGN	JDG	16 Dec 2009	FIGURE 5 PAGE 13 OF 178	
GIS	DLH	23 Feb 2010		
CHECK	SAR	23 Feb 2010		
REVIEW	KB	23 Feb 2010		



LEGEND

LCFS Right-of-Way

LAND USE / LAND COVER CODES

 110, RESIDENTIAL, LOW DENSITY	 434, HARDWOOD - CONIFER MIXED
 211, IMPROVED PASTURES	 641, FRESHWATER MARSHES
 212, UNIMPROVED PASTURES	 814, ROADS AND HIGHWAYS
 412, LONGLEAF PINE - XERIC OAK	

REFERENCE

Substations and Right-of-Way: Progress Energy Florida & Golder Associates Inc., 2009; Roads: Florida Department of Transportation, 2010; Railroads: FDEP, 1992; FLUCCS Data: SWFWMD, 2007, Golder edited 2009; Aerials: Progress Energy, 2009

200 100 0 200
Feet

PROGRESS ENERGY FLORIDA
LEVY NUCLEAR PLANT

LEVY - CENTRAL FLORIDA SOUTH HABITAT CLASSIFICATION MAP



MXD File No. 003-89547H005	SCALE AS SHOWN	REV. 0
DESIGN JDS 16 Dec 2009	FIGURE 5	
GIS DLH 23 Feb 2010		
CHECK SAR 23 Feb 2010		
REVIEW KB 23 Feb 2010		

PAGE 14 OF 178



LEGEND

LCFS Right-of-Way

LAND USE / LAND COVER CODES

- | | |
|--|---|
| 110, RESIDENTIAL, LOW DENSITY | 412, LONGLEAF PINE - XERIC OAK |
| 211, IMPROVED PASTURES | 814, ROADS AND HIGHWAYS |
| 212, UNIMPROVED PASTURES | |

REFERENCE

Substations and Right-of-Way: Progress Energy Florida & Golder Associates Inc., 2009; Roads: Florida Department of Transportation, 2010; Railroads: FDEP, 1992; FLUCCS Data: SWFWMD, 2007, Golder edited 2009; Aerials: Progress Energy, 2009

200 100 0 200
Feet

PROGRESS ENERGY FLORIDA
LEVY NUCLEAR PLANT

LEVY - CENTRAL FLORIDA SOUTH HABITAT CLASSIFICATION MAP



MXD File No. 093-89547H005		SCALE AS SHOWN	REV. 0
DESIGN	JDG	16 Dec 2009	
GIS	DLH	23 Feb 2010	
CHECK	SAR	23 Feb 2010	
REVIEW	KB	23 Feb 2010	

FIGURE 5

PAGE 15 OF 178



LEGEND

LCFS Right-of-Way

LAND USE / LAND COVER CODES

110, RESIDENTIAL, LOW DENSITY
 412, LONGLEAF PINE - XERIC OAK
 211, IMPROVED PASTURES
 814, ROADS AND HIGHWAYS

REFERENCE

Substations and Right-of-Way: Progress Energy Florida & Golder Associates Inc., 2009; Roads: Florida Department of Transportation, 2010; Railroads: FDEP, 1992; FLUCCS Data: SWFWMD, 2007, Golder edited 2009; Aerials: Progress Energy, 2009

200 100 0 200
Feet

PROGRESS ENERGY FLORIDA
LEVY NUCLEAR PLANT

LEVY - CENTRAL FLORIDA SOUTH HABITAT CLASSIFICATION MAP



MXD File No. 093-89547H005		SCALE AS SHOWN	REV. 0
DESIGN	JDG	16 Dec 2009	
GIS	DLH	23 Feb 2010	
CHECK	SAR	23 Feb 2010	
REVIEW	KB	23 Feb 2010	

FIGURE 5

PAGE 16 OF 178



LEGEND

 LCFS Right-of-Way

LAND USE / LAND COVER CODES

 110, RESIDENTIAL, LOW DENSITY 412, LONGLEAF PINE - XERIC OAK
 211, IMPROVED PASTURES 814, ROADS AND HIGHWAYS

REFERENCE

Substations and Right-of-Way: Progress Energy Florida & Golder Associates Inc., 2009; Roads: Florida Department of Transportation, 2010; Railroads: FDEP, 1992; FLUCCS Data: SWFWMD, 2007, Golder edited 2009; Aerials: Progress Energy, 2009

200 100 0 200
 Feet

PROGRESS ENERGY FLORIDA
 LEVY NUCLEAR PLANT

LEVY - CENTRAL FLORIDA SOUTH HABITAT CLASSIFICATION MAP



MXD File No. 093-89547H005		SCALE AS SHOWN	REV. 0
DESIGN	JDG	16 Dec 2009	
GIS	DLH	23 Feb 2010	
CHECK	SAR	23 Feb 2010	
REVIEW	KB	23 Feb 2010	

FIGURE 5

PAGE 17 OF 178



LEGEND

LCFS Right-of-Way

LAND USE / LAND COVER CODES

- | | |
|--|---|
| 110, RESIDENTIAL, LOW DENSITY | 412, LONGLEAF PINE - XERIC OAK |
| 211, IMPROVED PASTURES | 814, ROADS AND HIGHWAYS |
| 212, UNIMPROVED PASTURES | |

REFERENCE

Substations and Right-of-Way: Progress Energy Florida & Golder Associates Inc., 2009; Roads: Florida Department of Transportation, 2010; Railroads: FDEP, 1992; FLUCCS Data: SWFWMD, 2007, Golder edited 2009; Aerials: Progress Energy, 2009

200 100 0 200
Feet

PROGRESS ENERGY FLORIDA
LEVY NUCLEAR PLANT

LEVY - CENTRAL FLORIDA SOUTH HABITAT CLASSIFICATION MAP



MXD File No. 093-89547H005		SCALE AS SHOWN	REV. 0
DESIGN	JDG	16 Dec 2009	
GIS	DLH	23 Feb 2010	
CHECK	SAR	23 Feb 2010	
REVIEW	KB	23 Feb 2010	

FIGURE 5

PAGE 18 OF 178



LEGEND

 LCFS Right-of-Way

LAND USE / LAND COVER CODES

 110, RESIDENTIAL, LOW DENSITY	 427, LIVE OAK
 211, IMPROVED PASTURES	 740, DISTURBED LANDS
 412, LONGLEAF PINE - XERIC OAK	 814, ROADS AND HIGHWAYS

REFERENCE

Substations and Right-of-Way: Progress Energy Florida & Golder Associates Inc., 2009; Roads: Florida Department of Transportation, 2010; Railroads: FDEP, 1992; FLUCCS Data: SWFWMD, 2007, Golder edited 2009; Aerials: Progress Energy, 2009

PROGRESS ENERGY FLORIDA
LEVY NUCLEAR PLANT

LEVY - CENTRAL FLORIDA SOUTH HABITAT CLASSIFICATION MAP



MXD File No. 093-89547H005	SCALE AS SHOWN	REV. 0
DESIGN	JDG	16 Dec 2009
GIS	DLH	23 Feb 2010
CHECK	SAR	23 Feb 2010
REVIEW	KB	23 Feb 2010

FIGURE 5

PAGE 19 OF 178



LEGEND

LCFS Right-of-Way

LAND USE / LAND COVER CODES

110, RESIDENTIAL, LOW DENSITY
 412, LONGLEAF PINE - XERIC OAK
 211, IMPROVED PASTURES
 814, ROADS AND HIGHWAYS

REFERENCE

Substations and Right-of-Way: Progress Energy Florida & Golder Associates Inc., 2009; Roads: Florida Department of Transportation, 2010; Railroads: FDEP, 1992; FLUCCS Data: SWFWMD, 2007, Golder edited 2009; Aerials: Progress Energy, 2009

200 100 0 200 Feet

PROGRESS ENERGY FLORIDA
LEVY NUCLEAR PLANT

LEVY - CENTRAL FLORIDA SOUTH HABITAT CLASSIFICATION MAP



MXD File No. 093-89547H005			SCALE AS SHOWN	REV. 0
DESIGN	JDG	16 Dec 2009	FIGURE 5 PAGE 20 OF 178	
GIS	DLH	23 Feb 2010		
CHECK	SAR	23 Feb 2010		
REVIEW	KB	23 Feb 2010		



LEGEND

 LCFS Right-of-Way

LAND USE / LAND COVER CODES

 110, RESIDENTIAL, LOW DENSITY 412, LONGLEAF PINE - XERIC OAK
 211, IMPROVED PASTURES 814, ROADS AND HIGHWAYS

REFERENCE

Substations and Right-of-Way: Progress Energy Florida & Golder Associates Inc., 2009; Roads: Florida Department of Transportation, 2010; Railroads: FDEP, 1992; FLUCCS Data: SWFWMD, 2007, Golder edited 2009; Aerials: Progress Energy, 2009

200 100 0 200
Feet

PROGRESS ENERGY FLORIDA
LEVY NUCLEAR PLANT

LEVY - CENTRAL FLORIDA SOUTH HABITAT CLASSIFICATION MAP



MXD File No. 093-89547H005			SCALE AS SHOWN	REV. 0
DESIGN	JDG	16 Dec 2009	FIGURE 5 PAGE 21 OF 178	
GIS	DLH	23 Feb 2010		
CHECK	SAR	23 Feb 2010		
REVIEW	KB	23 Feb 2010		



LEGEND

LCFS Right-of-Way

LAND USE / LAND COVER CODES

- | | |
|--|---|
| 110, RESIDENTIAL, LOW DENSITY | 412, LONGLEAF PINE - XERIC OAK |
| 211, IMPROVED PASTURES | 814, ROADS AND HIGHWAYS |
| 212, UNIMPROVED PASTURES | |

REFERENCE

Substations and Right-of-Way: Progress Energy Florida & Golder Associates Inc., 2009; Roads: Florida Department of Transportation, 2010; Railroads: FDEP, 1992; FLUCCS Data: SWFWMD, 2007, Golder edited 2009; Aerials: Progress Energy, 2009

200 100 0 200
Feet

PROGRESS ENERGY FLORIDA
LEVY NUCLEAR PLANT

LEVY - CENTRAL FLORIDA SOUTH HABITAT CLASSIFICATION MAP



MXD File No: 093-89547H005		SCALE AS SHOWN	REV. 0
DESIGN	JDG	16 Dec 2009	
GIS	DLH	23 Feb 2010	
CHECK	SAR	23 Feb 2010	
REVIEW	KB	23 Feb 2010	

FIGURE 5

PAGE 22 OF 178



LEGEND

LCFS Right-of-Way

LAND USE / LAND COVER CODES

 110, RESIDENTIAL, LOW DENSITY	 413, SAND PINE
 211, IMPROVED PASTURES	 421, XERIC OAK
 212, UNIMPROVED PASTURES	 441, CONIFEROUS PLANTATIONS
 412, LONGLEAF PINE - XERIC OAK	 814, ROADS AND HIGHWAYS

REFERENCE

Substations and Right-of-Way: Progress Energy Florida & Golder Associates Inc., 2009; Roads: Florida Department of Transportation, 2010; Railroads: FDEP, 1992; FLUCCS Data: SWFWMD, 2007, Golder edited 2009; Aerials: Progress Energy, 2009

200 100 0 200
Feet

PROGRESS ENERGY FLORIDA
LEVY NUCLEAR PLANT

LEVY - CENTRAL FLORIDA SOUTH HABITAT CLASSIFICATION MAP



MXD File No. 093-89547H005		SCALE AS SHOWN	REV. 0
DESIGN	JDG	16 Dec 2009	
GIS	DLH	23 Feb 2010	
CHECK	SAR	23 Feb 2010	
REVIEW	KB	23 Feb 2010	

FIGURE 5

PAGE 23 OF 178



LEGEND

 LCFS Right-of-Way

LAND USE / LAND COVER CODES

 110, RESIDENTIAL, LOW DENSITY	 412, LONGLEAF PINE - XERIC OAK
 211, IMPROVED PASTURES	 413, SAND PINE
 212, UNIMPROVED PASTURES	 441, CONIFEROUS PLANTATIONS
 214, ROW CROPS	 814, ROADS AND HIGHWAYS

REFERENCE

Substations and Right-of-Way: Progress Energy Florida & Golder Associates Inc., 2009; Roads: Florida Department of Transportation, 2010; Railroads: FDEP, 1992; FLUCCS Data: SWFWMD, 2007, Golder edited 2009; Aerials: Progress Energy, 2009

200 100 0 200
Feet

PROGRESS ENERGY FLORIDA
LEVY NUCLEAR PLANT

LEVY - CENTRAL FLORIDA SOUTH HABITAT CLASSIFICATION MAP



MXD File No. 093-89547H005		SCALE AS SHOWN	REV. 0
DESIGN	JDG	16 Dec 2009	
GIS	DLH	23 Feb 2010	
CHECK	SAR	23 Feb 2010	
REVIEW	KB	23 Feb 2010	

FIGURE 5

PAGE 24 OF 178