

#### LEGEND

- Interstate
- Toll Road
- US Road
- State Road
- Railroad
- LCFS Right-of-Way
- Wood Stork Core Foraging Area
- County Boundaries

#### REFERENCE

Substations and Right-of-Way: Progress Energy Florida & Golder Associates Inc., 2009; Roads: Florida Department of Transportation, 2010; Railroads: FDEP, 1992; County Boundary: U.S. Census Bureau, 2000

PROGRESS ENERGY FLORIDA  
LEVY NUCLEAR PLANT

### LEVY - CENTRAL FLORIDA SOUTH LISTED SPECIES MAP



MXD File No.	093-89547H006
DESIGN	DLH 16 Dec 2009
GIS	DLH 24 Feb 2010
CHECK	SAR 24 Feb 2010
REVIEW	KB 24 Feb 2010

SCALE AS SHOWN REV. 0

**FIGURE 6  
INDEX**





#### LEGEND

- LCFS Right-of-Way    ▲ Florida Natural Areas Inventory Occurrence  
● Bald Eagle Nest

#### GOLDER OBSERVED SPECIES

- |   |   |   |
|---|---|---|
| <span style="color: green;">▲</span> Gopher Tortoise        | <span style="color: green;">■</span> Long Spurred Mint            | <span style="color: yellow;">●</span> Bald Eagle            |
| <span style="color: blue;">▲</span> Eastern Indigo Snake    | <span style="color: blue;">●</span> Southeastern American Kestrel | <span style="color: green;">◆</span> Bald Eagle Nest (Pot.) |
| <span style="color: green;">★</span> Sherman's Fox Squirrel | <span style="color: green;">●</span> Florida Sandhill Crane       |   |
|   | <span style="color: orange;">●</span> Florida Scrub Jay           |   |

#### REFERENCE

Substations and Right-of-Way: Progress Energy Florida & Golder Associates Inc., 2009; Roads: Florida Department of Transportation, 2010; Railroads: FDEP, 1992; Listed Species Data: Florida Natural Areas Inventory, 2006 and Golder Observed, 2009; Bald Eagle Nest Data: Florida Fish & Wildlife Conservation Commission, 2004; Wood Stork Colony Data: U.S. Fish & Wildlife Service, 2009; Aerials: FDOT, 2008

NOTE: Please refer to Index page for the portions of the Levy - Central Florida South line that are within Wood Stork Core Foraging Areas.

#### PROGRESS ENERGY FLORIDA LEVY NUCLEAR PLANT

#### LEVY - CENTRAL FLORIDA SOUTH LISTED SPECIES MAP



MXD File No. 093-89547H006				SCALE AS SHOWN	REV. 0
DESIGN	DLH	16 Dec 2009			
GIS	DLH	24 Feb 2010			
CHECK	SAR	24 Feb 2010			
REVIEW	KB	24 Feb 2010			

**FIGURE 6**  
PAGE 1 OF 29



F:\PROJECTS\2009 PROJ\093-89547\PEFCF\W-land Delineation T&E Survey\y101-FRP LCFS Route\GIS\WXD\093-89547\H006.FINAL.mxd



#### LEGEND

- LCFS Right-of-Way ▲ Florida Natural Areas Inventory Occurrence  
● Bald Eagle Nest

#### GOLDER OBSERVED SPECIES

- ▲ Gopher Tortoise ■ Long Spurred Mint ● Bald Eagle  
▲ Eastern Indigo Snake ● Southeastern American Kestrel ◆ Bald Eagle Nest (Pot.)  
★ Sherman's Fox Squirrel ● Florida Sandhill Crane  
● Florida Scrub Jay

#### REFERENCE

Substations and Right-of-Way: Progress Energy Florida & Golder Associates Inc., 2009; Roads: Florida Department of Transportation, 2010; Railroads: FDEP, 1992; Listed Species Data: Florida Natural Areas Inventory, 2006 and Golder Observed, 2009; Bald Eagle Nest Data: Florida Fish & Wildlife Conservation Commission, 2004; Wood Stork Colony Data: U.S. Fish & Wildlife Service, 2009; Aerials: FDOT, 2008

400 200 0 400  
Feet

NOTE: Please refer to Index page for the portions of the Levy - Central Florida South line that are within Wood Stork Core Foraging Areas.

#### PROGRESS ENERGY FLORIDA LEVY NUCLEAR PLANT

#### LEVY - CENTRAL FLORIDA SOUTH LISTED SPECIES MAP



MXD File No. 093-89547H006			SCALE AS SHOWN	REV. 0
DESIGN	DLH	16 Dec 2009	<b>FIGURE 6</b> <b>PAGE 2 OF 29</b>	
GIS	DLH	24 Feb 2010		
CHECK	SAR	24 Feb 2010		
REVIEW	KB	24 Feb 2010		





#### LEGEND

- LCFS Right-of-Way
- ▲ Florida Natural Areas Inventory Occurrence
- Bald Eagle Nest

#### GOLDER OBSERVED SPECIES

- ▲ Gopher Tortoise
- Long Spurred Mint
- Bald Eagle
- ▲ Eastern Indigo Snake
- Southeastern American Kestrel
- ◆ Bald Eagle Nest (Pot.)
- ★ Sherman's Fox Squirrel
- Florida Sandhill Crane
- Florida Scrub Jay

#### REFERENCE

Substations and Right-of-Way: Progress Energy Florida & Golder Associates Inc., 2009; Roads: Florida Department of Transportation, 2010; Railroads: FDEP, 1992; Listed Species Data: Florida Natural Areas Inventory, 2006 and Golder Observed, 2009; Bald Eagle Nest Data: Florida Fish & Wildlife Conservation Commission, 2004; Wood Stork Colony Data: U.S. Fish & Wildlife Service, 2009; Aerials: FDOT, 2008

NOTE: Please refer to Index page for the portions of the Levy - Central Florida South line that are within Wood Stork Core Foraging Areas.

#### PROGRESS ENERGY FLORIDA LEVY NUCLEAR PLANT

#### LEVY - CENTRAL FLORIDA SOUTH LISTED SPECIES MAP



MXD File No. 093-89547H006		SCALE AS SHOWN	REV. 0
DESIGN	DLH	16 Dec 2009	FIGURE 6 PAGE 3 OF 29
GIS	DLH	24 Feb 2010	
CHECK	SAR	24 Feb 2010	
REVIEW	KB	24 Feb 2010	





#### LEGEND

- LCFS Right-of-Way
 ▲ Florida Natural Areas Inventory Occurrence
 ● Bald Eagle Nest

#### GOLDER OBSERVED SPECIES

- |   |  |  |
|---|--|--|
| <span style="color: green;">▲</span> Gopher Tortoise        | <span style="background-color: green; color: black;">■</span> Long Spurred Mint                            | <span style="background-color: yellow; border: 1px solid black;">●</span> Bald Eagle |
| <span style="color: blue;">▲</span> Eastern Indigo Snake    | <span style="background-color: lightblue; border: 1px solid black;">●</span> Southeastern American Kestrel | <span style="color: green;">◆</span> Bald Eagle Nest (Pot.)                          |
| <span style="color: green;">★</span> Sherman's Fox Squirrel | <span style="background-color: green; border: 1px solid black;">●</span> Florida Sandhill Crane            |  |
|   | <span style="background-color: orange; border: 1px solid black;">●</span> Florida Scrub Jay                |  |

#### REFERENCE

Substations and Right-of-Way: Progress Energy Florida & Golder Associates Inc., 2009; Roads: Florida Department of Transportation, 2010; Railroads: FDEP, 1992; Listed Species Data: Florida Natural Areas Inventory, 2006 and Golder Observed, 2009; Bald Eagle Nest Data: Florida Fish & Wildlife Conservation Commission, 2004; Wood Stork Colony Data: U.S. Fish & Wildlife Service, 2009; Aerials: FDOT, 2008

NOTE: Please refer to Index page for the portions of the Levy - Central Florida South line that are within Wood Stork Core Foraging Areas.

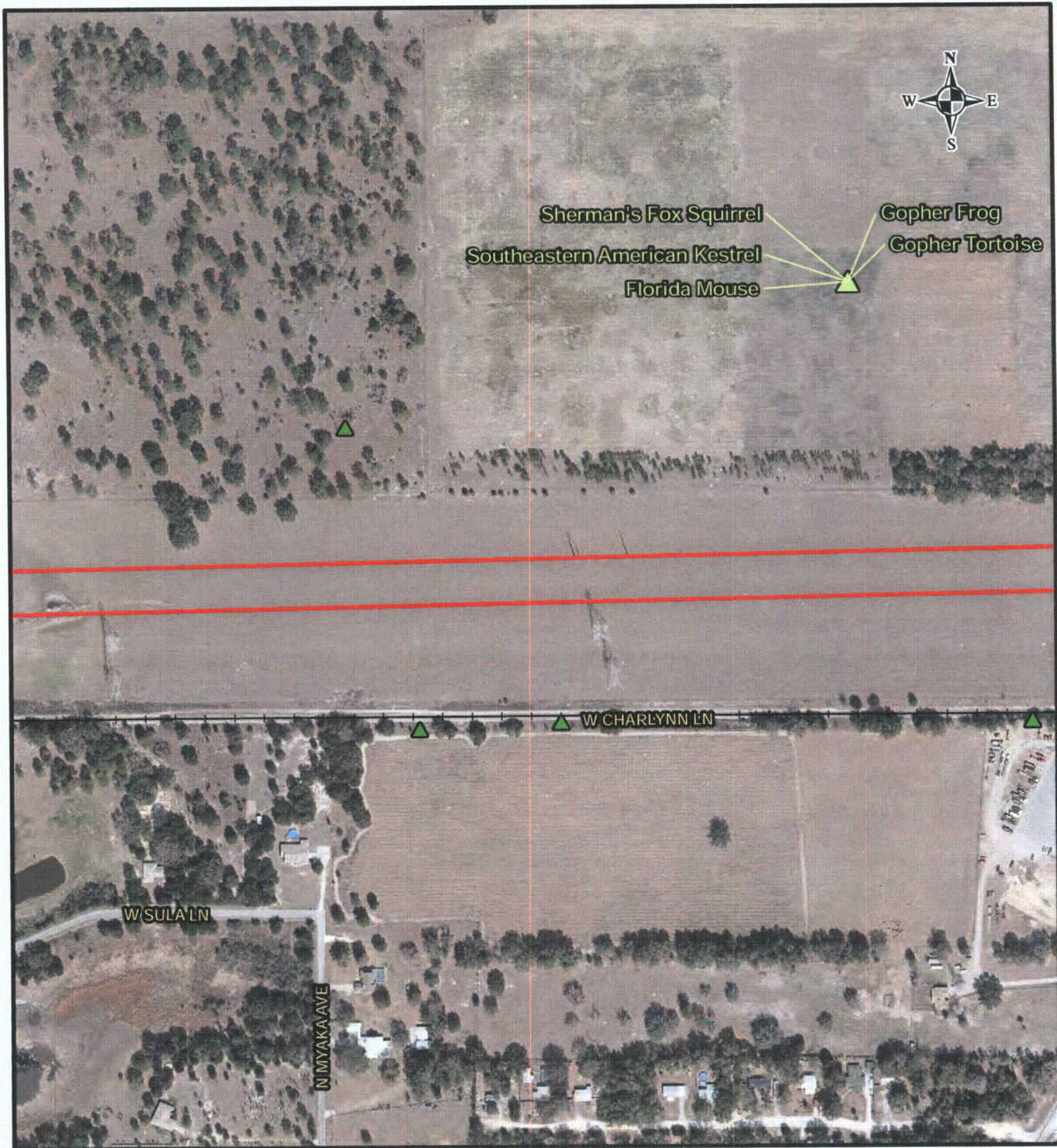
#### PROGRESS ENERGY FLORIDA LEVY NUCLEAR PLANT

#### LEVY - CENTRAL FLORIDA SOUTH LISTED SPECIES MAP



MXD File No. 093-89547H006			SCALE AS SHOWN	REV. 0
DESIGN	DLH	16 Dec 2009	<b>FIGURE 6</b> PAGE 4 OF 29	
GIS	DLH	24 Feb 2010		
CHECK	SAR	24 Feb 2010		
REVIEW	KB	24 Feb 2010		





#### LEGEND

- LCFS Right-of-Way    ▲ Florida Natural Areas Inventory Occurrence  
● Bald Eagle Nest

#### GOLDER OBSERVED SPECIES

- |   |   |   |
|---|---|---|
| <span style="color: green;">▲</span> Gopher Tortoise        | <span style="color: green;">■</span> Long Spurred Mint            | <span style="color: yellow;">●</span> Bald Eagle            |
| <span style="color: blue;">▲</span> Eastern Indigo Snake    | <span style="color: blue;">●</span> Southeastern American Kestrel | <span style="color: green;">◆</span> Bald Eagle Nest (Pot.) |
| <span style="color: green;">★</span> Sherman's Fox Squirrel | <span style="color: green;">●</span> Florida Sandhill Crane       |   |
|   | <span style="color: orange;">●</span> Florida Scrub Jay           |   |

#### REFERENCE

Substations and Right-of-Way: Progress Energy Florida & Golder Associates Inc., 2009; Roads: Florida Department of Transportation, 2010; Railroads: FDEP, 1992; Listed Species Data: Florida Natural Areas Inventory, 2006 and Golder Observed, 2009; Bald Eagle Nest Data: Florida Fish & Wildlife Conservation Commission, 2004; Wood Stork Colony Data: U.S. Fish & Wildlife Service, 2009; Aerials: FDOT, 2008

NOTE: Please refer to Index page for the portions of the Levy - Central Florida South line that are within Wood Stork Core Foraging Areas.

#### PROGRESS ENERGY FLORIDA LEVY NUCLEAR PLANT

#### LEVY - CENTRAL FLORIDA SOUTH LISTED SPECIES MAP



MXD File No. 093-89547H006				SCALE AS SHOWN	REV. 0
DESIGN	DLH	16 Dec 2009			
GIS	DLH	24 Feb 2010			
CHECK	SAR	24 Feb 2010			
REVIEW	KB	24 Feb 2010			

**FIGURE 6**  
PAGE 5 OF 29





#### LEGEND

- LCFS Right-of-Way
- ▲ Florida Natural Areas Inventory Occurrence
- Bald Eagle Nest

#### GOLDER OBSERVED SPECIES

- ▲ Gopher Tortoise
- Long Spurred Mint
- Bald Eagle
- ▲ Eastern Indigo Snake
- Southeastern American Kestrel
- ◆ Bald Eagle Nest (Pot.)
- ★ Sherman's Fox Squirrel
- Florida Sandhill Crane
- Florida Scrub Jay

#### REFERENCE

Substations and Right-of-Way: Progress Energy Florida & Golder Associates Inc., 2009; Roads: Florida Department of Transportation, 2010; Railroads: FDEP, 1992; Listed Species Data: Florida Natural Areas Inventory, 2006 and Golder Observed, 2009; Bald Eagle Nest Data: Florida Fish & Wildlife Conservation Commission, 2004; Wood Stork Colony Data: U.S. Fish & Wildlife Service, 2009; Aerials: FDOT, 2008

NOTE: Please refer to Index page for the portions of the Levy - Central Florida South line that are within Wood Stork Core Foraging Areas.

#### PROGRESS ENERGY FLORIDA LEVY NUCLEAR PLANT

#### LEVY - CENTRAL FLORIDA SOUTH LISTED SPECIES MAP



MXD File No. 093-89547H006			SCALE AS SHOWN	REV. 0
DESIGN	DLH	16 Dec 2009	<b>FIGURE 6</b> <b>PAGE 6 OF 29</b>	
GIS	DLH	24 Feb 2010		
CHECK	SAR	24 Feb 2010		
REVIEW	KB	24 Feb 2010		





#### LEGEND

- LCFS Right-of-Way
- Florida Natural Areas Inventory Occurrence
- ✖ Bald Eagle Nest

#### GOLDER OBSERVED SPECIES

- ▲ Gopher Tortoise
- Long Spurred Mint
- Bald Eagle
- ▲ Eastern Indigo Snake
- Southeastern American Kestrel
- ◆ Bald Eagle Nest (Pot.)
- ★ Sherman's Fox Squirrel
- Florida Sandhill Crane
- Florida Scrub Jay

#### REFERENCE

Substations and Right-of-Way: Progress Energy Florida & Golder Associates Inc., 2009; Roads: Florida Department of Transportation, 2010; Railroads: FDEP, 1992; Listed Species Data: Florida Natural Areas Inventory, 2006 and Golder Observed, 2009; Bald Eagle Nest Data: Florida Fish & Wildlife Conservation Commission, 2004; Wood Stork Colony Data: U.S. Fish & Wildlife Service, 2009; Aerials: FDOT, 2008

400 200 0 400  
Feet

NOTE: Please refer to Index page for the portions of the Levy - Central Florida South line that are within Wood Stork Core Foraging Areas.

PROGRESS ENERGY FLORIDA  
LEVY NUCLEAR PLANT

LEVY - CENTRAL FLORIDA SOUTH  
LISTED SPECIES MAP



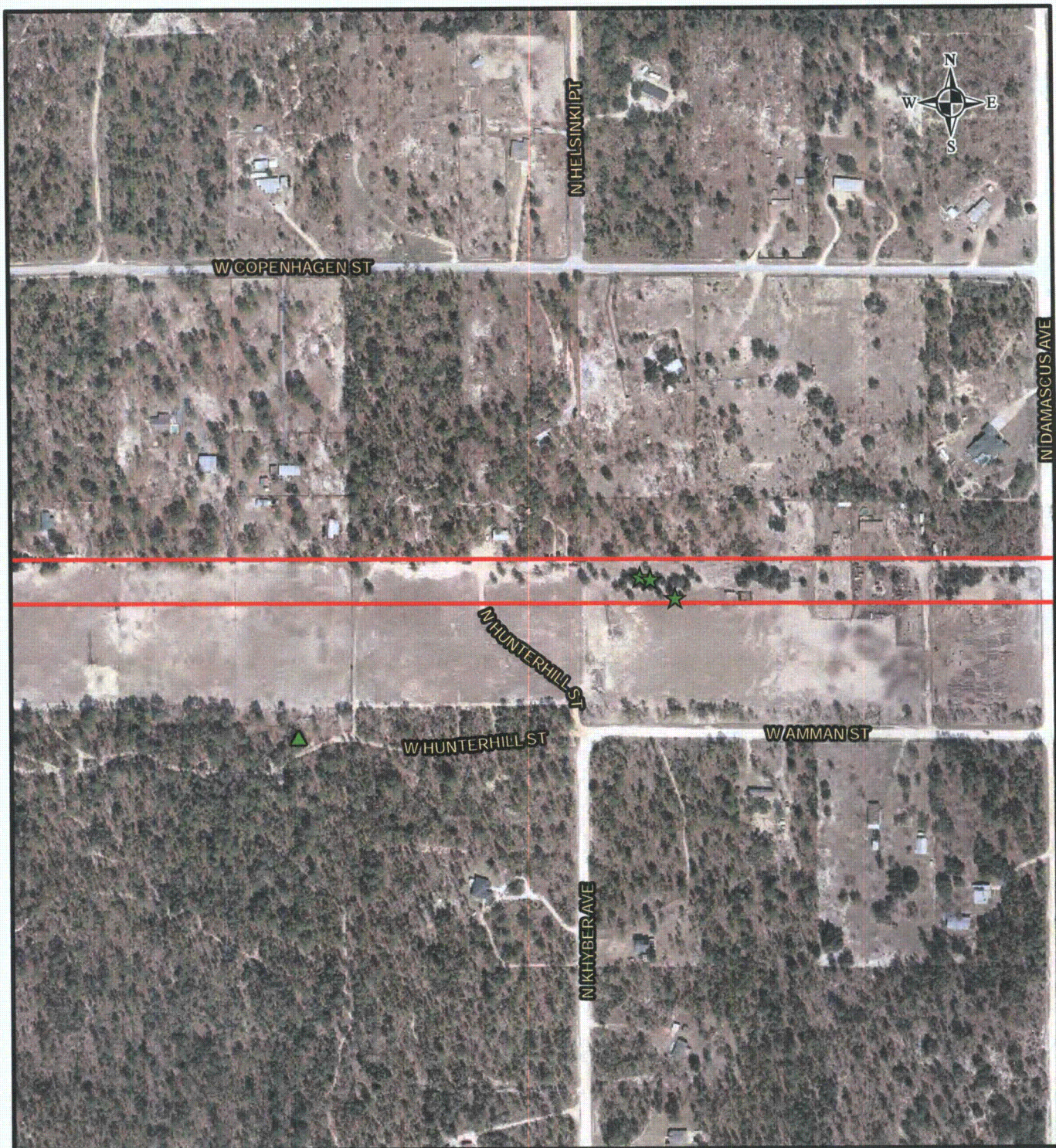
Progress Energy

MXD File No.	093-89547H006
DESIGN	DLH 16 Dec 2009
GIS	DLH 24 Feb 2010
CHECK	SAR 24 Feb 2010
REVIEW	KB 24 Feb 2010

SCALE AS SHOWN REV. 0

FIGURE 6  
PAGE 7 OF 29





#### LEGEND

- LCFS Right-of-Way
- Florida Natural Areas Inventory Occurrence
- ★ Bald Eagle Nest

#### GOLDER OBSERVED SPECIES

- ▲ Gopher Tortoise
- Long Spurred Mint
- Bald Eagle
- ▲ Eastern Indigo Snake
- Southeastern American Kestrel
- ★ Bald Eagle Nest (Pot.)
- ★ Sherman's Fox Squirrel
- Florida Sandhill Crane
- Florida Scrub Jay

#### REFERENCE

Substations and Right-of-Way: Progress Energy Florida & Golder Associates Inc., 2009; Roads: Florida Department of Transportation, 2010; Railroads: FDEP, 1992; Listed Species Data: Florida Natural Areas Inventory, 2006 and Golder Observed, 2009; Bald Eagle Nest Data: Florida Fish & Wildlife Conservation Commission, 2004; Wood Stork Colony Data: U.S. Fish & Wildlife Service, 2009; Aerials: FDOT, 2008

NOTE: Please refer to Index page for the portions of the Levy - Central Florida South line that are within Wood Stork Core Foraging Areas.

PROGRESS ENERGY FLORIDA  
LEVY NUCLEAR PLANT

LEVY - CENTRAL FLORIDA SOUTH  
LISTED SPECIES MAP



MXD File No. 093-89547H006			
DESIGN	DLH	16 Dec 2009	
GIS	DLH	24 Feb 2010	
CHECK	SAR	24 Feb 2010	
REVIEW	KB	24 Feb 2010	

SCALE AS SHOWN REV. 0

FIGURE 6  
PAGE 8 OF 29





#### LEGEND

- LCFS Right-of-Way
- ▲ Florida Natural Areas Inventory Occurrence
- ✕ Bald Eagle Nest

#### GOLDER OBSERVED SPECIES

- ▲ Gopher Tortoise
- Long Spurred Mint
- Bald Eagle
- ▲ Eastern Indigo Snake
- Southeastern American Kestrel
- ◆ Bald Eagle Nest (Pot.)
- ★ Sherman's Fox Squirrel
- Florida Sandhill Crane
- Florida Scrub Jay

#### REFERENCE

Substations and Right-of-Way: Progress Energy Florida & Golder Associates Inc., 2009; Roads: Florida Department of Transportation, 2010; Railroads: FDEP, 1992; Listed Species Data: Florida Natural Areas Inventory, 2006 and Golder Observed, 2009; Bald Eagle Nest Data: Florida Fish & Wildlife Conservation Commission, 2004; Wood Stork Colony Data: U.S. Fish & Wildlife Service, 2009; Aerials: FDOT, 2008

400 200 0 400  
Feet

NOTE: Please refer to Index page for the portions of the Levy - Central Florida South line that are within Wood Stork Core Foraging Areas.

#### PROGRESS ENERGY FLORIDA LEVY NUCLEAR PLANT

#### LEVY - CENTRAL FLORIDA SOUTH LISTED SPECIES MAP



MXD File No. 093-89547H006			SCALE AS SHOWN	REV. 0
DESIGN	DLH	16 Dec 2009	FIGURE 6 PAGE 9 OF 29	
GIS	DLH	24 Feb 2010		
CHECK	SAR	24 Feb 2010		
REVIEW	KB	24 Feb 2010		





#### LEGEND

- LCFS Right-of-Way
- Florida Natural Areas Inventory Occurrence
- Bald Eagle Nest

#### GOLDER OBSERVED SPECIES

- ▲ Gopher Tortoise
- Long Spurred Mint
- Bald Eagle
- ▲ Eastern Indigo Snake
- Southeastern American Kestrel
- ◆ Bald Eagle Nest (Pot.)
- ★ Sherman's Fox Squirrel
- Florida Sandhill Crane
- Florida Scrub Jay

#### REFERENCE

Substations and Right-of-Way: Progress Energy Florida & Golder Associates Inc., 2009; Roads: Florida Department of Transportation, 2010; Railroads: FDEP, 1992; Listed Species Data: Florida Natural Areas Inventory, 2006 and Golder Observed, 2009; Bald Eagle Nest Data: Florida Fish & Wildlife Conservation Commission, 2004; Wood Stork Colony Data: U.S. Fish & Wildlife Service, 2009; Aerials: FDOT, 2008

NOTE: Please refer to Index page for the portions of the Levy - Central Florida South line that are within Wood Stork Core Foraging Areas.

#### PROGRESS ENERGY FLORIDA LEVY NUCLEAR PLANT

#### LEVY - CENTRAL FLORIDA SOUTH LISTED SPECIES MAP



MXD File No. 093-89547H006			SCALE AS SHOWN	REV. 0
DESIGN	DLH	16 Dec 2009	FIGURE 6 PAGE 10 OF 29	
GIS	DLH	24 Feb 2010		
CHECK	SAR	24 Feb 2010		
REVIEW	KB	24 Feb 2010		





#### LEGEND

- LCFS Right-of-Way
 ▲ Florida Natural Areas Inventory Occurrence
 ✕ Bald Eagle Nest

#### GOLDER OBSERVED SPECIES

- |   |   |   |
|---|---|---|
| <span style="color: green; font-size: 1.5em;">▲</span> Gopher Tortoise        | <span style="color: green; font-size: 1.5em;">■</span> Long Spurred Mint            | <span style="color: yellow; font-size: 1.5em;">●</span> Bald Eagle            |
| <span style="color: blue; font-size: 1.5em;">▲</span> Eastern Indigo Snake    | <span style="color: blue; font-size: 1.5em;">●</span> Southeastern American Kestrel | <span style="color: green; font-size: 1.5em;">◆</span> Bald Eagle Nest (Pot.) |
| <span style="color: green; font-size: 1.5em;">★</span> Sherman's Fox Squirrel | <span style="color: green; font-size: 1.5em;">●</span> Florida Sandhill Crane       |   |
|   | <span style="color: orange; font-size: 1.5em;">●</span> Florida Scrub Jay           |   |

#### REFERENCE

Substations and Right-of-Way: Progress Energy Florida & Golder Associates Inc., 2009; Roads: Florida Department of Transportation, 2010; Railroads: FDEP, 1992; Listed Species Data: Florida Natural Areas Inventory, 2006 and Golder Observed, 2009; Bald Eagle Nest Data: Florida Fish & Wildlife Conservation Commission, 2004; Wood Stork Colony Data: U.S. Fish & Wildlife Service, 2009; Aerials: FDOT, 2008

400 200 0 400 Feet

NOTE: Please refer to Index page for the portions of the Levy - Central Florida South line that are within Wood Stork Core Foraging Areas.

#### PROGRESS ENERGY FLORIDA LEVY NUCLEAR PLANT

#### LEVY - CENTRAL FLORIDA SOUTH LISTED SPECIES MAP



MXD File No. 093-89547H006		SCALE AS SHOWN	REV. 0
DESIGN	DLH	16 Dec 2009	FIGURE 6 PAGE 11 OF 29
GIS	DLH	24 Feb 2010	
CHECK	SAR	24 Feb 2010	
REVIEW	KB	24 Feb 2010	





#### LEGEND

- LCFS Right-of-Way
 ▲ Florida Natural Areas Inventory Occurrence
 ● Bald Eagle Nest

#### GOLDER OBSERVED SPECIES

- |   |   |   |
|---|---|---|
| <span style="color: green;">▲</span> Gopher Tortoise        | <span style="color: green;">■</span> Long Spurred Mint            | <span style="color: yellow;">●</span> Bald Eagle            |
| <span style="color: blue;">▲</span> Eastern Indigo Snake    | <span style="color: blue;">●</span> Southeastern American Kestrel | <span style="color: green;">◆</span> Bald Eagle Nest (Pot.) |
| <span style="color: green;">★</span> Sherman's Fox Squirrel | <span style="color: green;">●</span> Florida Sandhill Crane       |   |
|   | <span style="color: orange;">●</span> Florida Scrub Jay           |   |

#### REFERENCE

Substations and Right-of-Way: Progress Energy Florida & Golder Associates Inc., 2009; Roads: Florida Department of Transportation, 2010; Railroads: FDEP, 1992; Listed Species Data: Florida Natural Areas Inventory, 2006 and Golder Observed, 2009; Bald Eagle Nest Data: Florida Fish & Wildlife Conservation Commission, 2004; Wood Stork Colony Data: U.S. Fish & Wildlife Service, 2009; Aerials: FDOT, 2008

NOTE: Please refer to Index page for the portions of the Levy - Central Florida South line that are within Wood Stork Core Foraging Areas.

#### PROGRESS ENERGY FLORIDA LEVY NUCLEAR PLANT

#### LEVY - CENTRAL FLORIDA SOUTH LISTED SPECIES MAP



Progress Energy

MXD File No. 093-89547H006			SCALE AS SHOWN	REV. 0
DESIGN	DHL	16 Dec 2009	FIGURE 6 PAGE 12 OF 29	
GIS	DHL	24 Feb 2010		
CHECK	SAR	24 Feb 2010		
REVIEW	KB	24 Feb 2010		





#### LEGEND

- LCFS Right-of-Way
- ▲ Florida Natural Areas Inventory Occurrence
- Bald Eagle Nest

#### GOLDER OBSERVED SPECIES

- ▲ Gopher Tortoise
- Long Spurred Mint
- Bald Eagle
- ▲ Eastern Indigo Snake
- Southeastern American Kestrel
- ◆ Bald Eagle Nest (Pot.)
- ★ Sherman's Fox Squirrel
- Florida Sandhill Crane
- Florida Scrub Jay

#### REFERENCE

Substations and Right-of-Way: Progress Energy Florida & Golder Associates Inc., 2009; Roads: Florida Department of Transportation, 2010; Railroads: FDEP, 1992; Listed Species Data: Florida Natural Areas Inventory, 2006 and Golder Observed, 2009; Bald Eagle Nest Data: Florida Fish & Wildlife Conservation Commission, 2004; Wood Stork Colony Data: U.S. Fish & Wildlife Service, 2009; Aerials: FDOT, 2008

400 200 0 400  
Feet

NOTE: Please refer to Index page for the portions of the Levy - Central Florida South line that are within Wood Stork Core Foraging Areas.

#### PROGRESS ENERGY FLORIDA LEVY NUCLEAR PLANT

#### LEVY - CENTRAL FLORIDA SOUTH LISTED SPECIES MAP



MXD File No. 093-89547H006		SCALE AS SHOWN	REV. 0
DESIGN	DLH	16 Dec 2009	
GIS	DLH	24 Feb 2010	
CHECK	SAR	24 Feb 2010	
REVIEW	KB	24 Feb 2010	

**FIGURE 6**  
PAGE 13 OF 29





#### LEGEND

- LCFS Right-of-Way
- Florida Natural Areas Inventory Occurrence
- ▲ Bald Eagle Nest

#### GOLDER OBSERVED SPECIES

- ▲ Gopher Tortoise
- Long Spurred Mint
- Bald Eagle
- ▲ Eastern Indigo Snake
- Southeastern American Kestrel
- ◆ Bald Eagle Nest (Pot.)
- ★ Sherman's Fox Squirrel
- Florida Sandhill Crane
- Florida Scrub Jay

#### REFERENCE

Substations and Right-of-Way: Progress Energy Florida & Golder Associates Inc., 2009; Roads: Florida Department of Transportation, 2010; Railroads: FDEP, 1992; Listed Species Data: Florida Natural Areas Inventory, 2006 and Golder Observed, 2009; Bald Eagle Nest Data: Florida Fish & Wildlife Conservation Commission, 2004; Wood Stork Colony Data: U.S. Fish & Wildlife Service, 2009; Aerials: FDOT, 2008

NOTE: Please refer to Index page for the portions of the Levy - Central Florida South line that are within Wood Stork Core Foraging Areas.

#### PROGRESS ENERGY FLORIDA LEVY NUCLEAR PLANT

#### LEVY - CENTRAL FLORIDA SOUTH LISTED SPECIES MAP



MXD File No. 093-89547H006			SCALE AS SHOWN	REV. 0
DESIGN	DLH	16 Dec 2009	<b>FIGURE 6</b> PAGE 14 OF 29	
GIS	DLH	24 Feb 2010		
CHECK	SAR	24 Feb 2010		
REVIEW	KB	24 Feb 2010		





#### LEGEND

- LCFS Right-of-Way
 ▲ Florida Natural Areas Inventory Occurrence
 ● Bald Eagle Nest

#### GOLDER OBSERVED SPECIES

- |   |   |   |
|---|---|---|
| <span style="color: green;">▲</span> Gopher Tortoise        | <span style="color: green;">■</span> Long Spurred Mint            | <span style="color: yellow;">●</span> Bald Eagle            |
| <span style="color: blue;">▲</span> Eastern Indigo Snake    | <span style="color: blue;">●</span> Southeastern American Kestrel | <span style="color: green;">◆</span> Bald Eagle Nest (Pot.) |
| <span style="color: green;">★</span> Sherman's Fox Squirrel | <span style="color: green;">●</span> Florida Sandhill Crane       |   |
|   | <span style="color: orange;">●</span> Florida Scrub Jay           |   |

#### REFERENCE

Substations and Right-of-Way: Progress Energy Florida & Golder Associates Inc., 2009; Roads: Florida Department of Transportation, 2010; Railroads: FDEP, 1992; Listed Species Data: Florida Natural Areas Inventory, 2006 and Golder Observed, 2009; Bald Eagle Nest Data: Florida Fish & Wildlife Conservation Commission, 2004; Wood Stork Colony Data: U.S. Fish & Wildlife Service, 2009; Aerials: FDOT, 2008

NOTE: Please refer to Index page for the portions of the Levy - Central Florida South line that are within Wood Stork Core Foraging Areas.

#### PROGRESS ENERGY FLORIDA LEVY NUCLEAR PLANT

#### LEVY - CENTRAL FLORIDA SOUTH LISTED SPECIES MAP



MXD File No. 093-89547H006				SCALE AS SHOWN		REV. 0
DESIGN	DLH	16 Dec 2009				
GIS	DLH	24 Feb 2010				
CHECK	SAR	24 Feb 2010				
REVIEW	KB	24 Feb 2010				

**FIGURE 6**  
 PAGE 15 OF 29





#### LEGEND

- LCFS Right-of-Way
- ▲ Florida Natural Areas Inventory Occurrence
- Bald Eagle Nest

#### GOLDER OBSERVED SPECIES

- ▲ Gopher Tortoise
- Long Spurred Mint
- Bald Eagle
- ▲ Eastern Indigo Snake
- Southeastern American Kestrel
- ◆ Bald Eagle Nest (Pot.)
- ★ Sherman's Fox Squirrel
- Florida Sandhill Crane
- Florida Scrub Jay

#### REFERENCE

Substations and Right-of-Way: Progress Energy Florida & Golder Associates Inc., 2009; Roads: Florida Department of Transportation, 2010; Railroads: FDEP, 1992; Listed Species Data: Florida Natural Areas Inventory, 2006 and Golder Observed, 2009; Bald Eagle Nest Data: Florida Fish & Wildlife Conservation Commission, 2004; Wood Stork Colony Data: U.S. Fish & Wildlife Service, 2009; Aerials: FDOT, 2008

NOTE: Please refer to Index page for the portions of the Levy - Central Florida South line that are within Wood Stork Core Foraging Areas.

#### PROGRESS ENERGY FLORIDA LEVY NUCLEAR PLANT

#### LEVY - CENTRAL FLORIDA SOUTH LISTED SPECIES MAP



MXD File No. 093-89547H006			SCALE AS SHOWN	REV. 0
DESIGN	DLH	16 Dec 2009	<b>FIGURE 6</b> <b>PAGE 16 OF 29</b>	
GIS	DLH	24 Feb 2010		
CHECK	SAR	24 Feb 2010		
REVIEW	KB	24 Feb 2010		



F:\PROJECTS\2009 PROJ\09-1-4947 PEECF Wetland Delineation T&E Survey\JSH - ERP LCFS Route\GIS\MXD\093-89547H006 FINAL.mxd



#### LEGEND

- LCFS Right-of-Way
- ▲ Florida Natural Areas Inventory Occurrence
- Bald Eagle Nest

#### GOLDER OBSERVED SPECIES

- ▲ Gopher Tortoise
- Long Spurred Mint
- Bald Eagle
- ▲ Eastern Indigo Snake
- Southeastern American Kestrel
- ◆ Bald Eagle Nest (Pot.)
- ★ Sherman's Fox Squirrel
- Florida Sandhill Crane
- Florida Scrub Jay

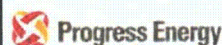
#### REFERENCE

Substations and Right-of-Way: Progress Energy Florida & Golder Associates Inc., 2009; Roads: Florida Department of Transportation, 2010; Railroads: FDEP, 1992; Listed Species Data: Florida Natural Areas Inventory, 2006 and Golder Observed, 2009; Bald Eagle Nest Data: Florida Fish & Wildlife Conservation Commission, 2004; Wood Stork Colony Data: U.S. Fish & Wildlife Service, 2009; Aerials: FDOT, 2008

NOTE: Please refer to Index page for the portions of the Levy - Central Florida South line that are within Wood Stork Core Foraging Areas.

#### PROGRESS ENERGY FLORIDA LEVY NUCLEAR PLANT

#### LEVY - CENTRAL FLORIDA SOUTH LISTED SPECIES MAP



MXD File No. 093-89547H006			SCALE AS SHOWN	REV. 0
DESIGN	DLH	16 Dec 2009	<b>FIGURE 6</b> <b>PAGE 17 OF 29</b>	
GIS	DLH	24 Feb 2010		
CHECK	SAR	24 Feb 2010		
REVIEW	KB	24 Feb 2010		





#### LEGEND

- LCFS Right-of-Way
- ▲ Florida Natural Areas Inventory Occurrence
- Bald Eagle Nest

#### GOLDER OBSERVED SPECIES

- ▲ Gopher Tortoise
- Long Spurred Mint
- Bald Eagle
- ▲ Eastern Indigo Snake
- Southeastern American Kestrel
- ◆ Bald Eagle Nest (Pot.)
- ★ Sherman's Fox Squirrel
- Florida Sandhill Crane
- Florida Scrub Jay

#### REFERENCE

Substations and Right-of-Way: Progress Energy Florida & Golder Associates Inc., 2009; Roads: Florida Department of Transportation, 2010; Railroads: FDEP, 1992; Listed Species Data: Florida Natural Areas Inventory, 2006 and Golder Observed, 2009; Bald Eagle Nest Data: Florida Fish & Wildlife Conservation Commission, 2004; Wood Stork Colony Data: U.S. Fish & Wildlife Service, 2009; Aerials: FDOT, 2008

NOTE: Please refer to Index page for the portions of the Levy - Central Florida South line that are within Wood Stork Core Foraging Areas.

#### PROGRESS ENERGY FLORIDA LEVY NUCLEAR PLANT

#### LEVY - CENTRAL FLORIDA SOUTH LISTED SPECIES MAP



MXD File No. 093-89547H006		SCALE AS SHOWN	REV. 0
DESIGN	DLH	16 Dec 2009	FIGURE 6 PAGE 18 OF 29
GIS	DLH	24 Feb 2010	
CHECK	SAR	24 Feb 2010	
REVIEW	KB	24 Feb 2010	





#### LEGEND

- LCFS Right-of-Way
- ▲ Florida Natural Areas Inventory Occurrence
- Bald Eagle Nest

#### GOLDER OBSERVED SPECIES

- ▲ Gopher Tortoise
- Long Spurred Mint
- Bald Eagle
- ▲ Eastern Indigo Snake
- Southeastern American Kestrel
- ◆ Bald Eagle Nest (Pot.)
- ★ Sherman's Fox Squirrel
- Florida Sandhill Crane
- Florida Scrub Jay

#### REFERENCE

Substations and Right-of-Way: Progress Energy Florida & Golder Associates Inc., 2009; Roads: Florida Department of Transportation, 2010; Railroads: FDEP, 1992; Listed Species Data: Florida Natural Areas Inventory, 2006 and Golder Observed, 2009; Bald Eagle Nest Data: Florida Fish & Wildlife Conservation Commission, 2004; Wood Stork Colony Data: U.S. Fish & Wildlife Service, 2009; Aerials: FDOT, 2008

400 200 0 400 Feet

NOTE: Please refer to Index page for the portions of the Levy - Central Florida South line that are within Wood Stork Core Foraging Areas.

#### PROGRESS ENERGY FLORIDA LEVY NUCLEAR PLANT

#### LEVY - CENTRAL FLORIDA SOUTH LISTED SPECIES MAP



MXD File No. 093-89547H006		SCALE AS SHOWN	REV. 0
DESIGN	DLH	16 Dec 2009	
GIS	DLH	24 Feb 2010	
CHECK	SAR	24 Feb 2010	
REVIEW	KB	24 Feb 2010	

**FIGURE 6**  
**PAGE 19 OF 29**





#### LEGEND

- LCFS Right-of-Way
- ▲ Florida Natural Areas Inventory Occurrence
- ⊗ Bald Eagle Nest

#### GOLDER OBSERVED SPECIES

- ▲ Gopher Tortoise
- Long Spurred Mint
- Bald Eagle
- ▲ Eastern Indigo Snake
- Southeastern American Kestrel
- ◆ Bald Eagle Nest (Pot.)
- ★ Sherman's Fox Squirrel
- Florida Sandhill Crane
- Florida Scrub Jay

#### REFERENCE

Substations and Right-of-Way: Progress Energy Florida & Golder Associates Inc., 2009; Roads: Florida Department of Transportation, 2010; Railroads: FDEP, 1992; Listed Species Data: Florida Natural Areas Inventory, 2006 and Golder Observed, 2009; Bald Eagle Nest Data: Florida Fish & Wildlife Conservation Commission, 2004; Wood Stork Colony Data: U.S. Fish & Wildlife Service, 2009; Aerials: FDOT, 2008

NOTE: Please refer to Index page for the portions of the Levy - Central Florida South line that are within Wood Stork Core Foraging Areas.

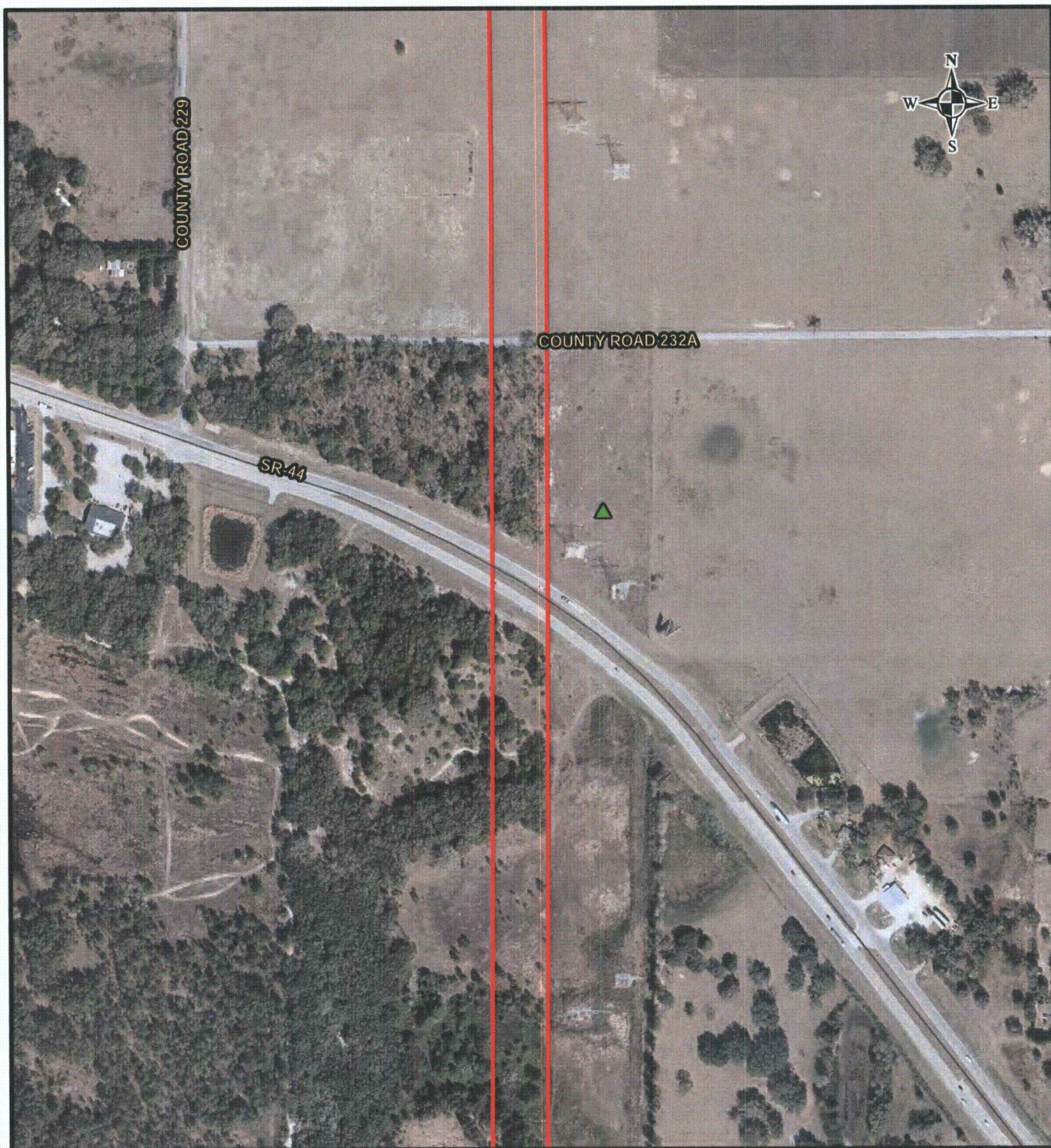
#### PROGRESS ENERGY FLORIDA LEVY NUCLEAR PLANT

#### LEVY - CENTRAL FLORIDA SOUTH LISTED SPECIES MAP



MXD File No. 093-99547H006		SCALE AS SHOWN	REV. 0
DESIGN	DLH	16 Dec 2009	FIGURE 6 PAGE 20 OF 29
GIS	DLH	24 Feb 2010	
CHECK	SAR	24 Feb 2010	
REVIEW	KB	24 Feb 2010	





#### LEGEND

- LCFS Right-of-Way
- ▲ Florida Natural Areas Inventory Occurrence
- Bald Eagle Nest

#### GOLDER OBSERVED SPECIES

- ▲ Gopher Tortoise
- Long Spurred Mint
- Bald Eagle
- ▲ Eastern Indigo Snake
- Southeastern American Kestrel
- Bald Eagle Nest (Pot.)
- ★ Sherman's Fox Squirrel
- Florida Sandhill Crane
- Florida Scrub Jay

#### REFERENCE

Substations and Right-of-Way: Progress Energy Florida & Golder Associates Inc., 2009; Roads: Florida Department of Transportation, 2010; Railroads: FDEP, 1992; Listed Species Data: Florida Natural Areas Inventory, 2006 and Golder Observed, 2009; Bald Eagle Nest Data: Florida Fish & Wildlife Conservation Commission, 2004; Wood Stork Colony Data: U.S. Fish & Wildlife Service, 2009; Aerials: FDOT, 2008

400 200 0 400  
Feet

NOTE: Please refer to Index page for the portions of the Levy - Central Florida South line that are within Wood Stork Core Foraging Areas.

PROGRESS ENERGY FLORIDA  
LEVY NUCLEAR PLANT

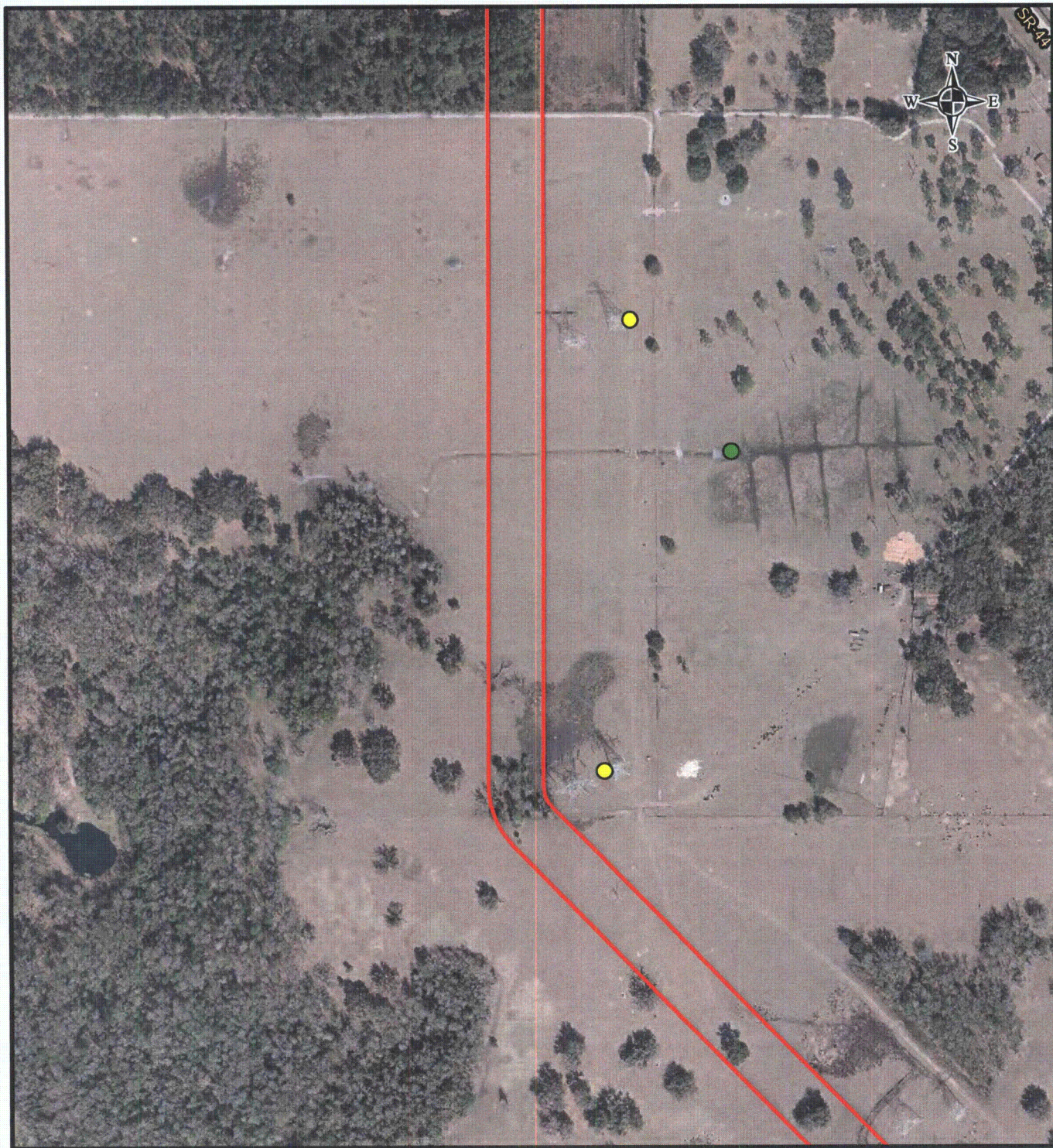
LEVY - CENTRAL FLORIDA SOUTH  
LISTED SPECIES MAP



MXD File No. 093-89547H006			SCALE AS SHOWN	REV. 0
DESIGN	DLH	16 Dec 2009	<b>FIGURE 6</b> <b>PAGE 21 OF 29</b>	
GIS	DLH	24 Feb 2010		
CHECK	SAR	24 Feb 2010		
REVIEW	KB	24 Feb 2010		



F:\PROJECTS\2008 PROJ\093-89547 PEFCE\W\land Delineation T&E Surveys\SH - ERP 1 LCFS Route\GIS\MXD\093-89547\H006 FINAL.mxd



#### LEGEND

- LCFS Right-of-Way
- Florida Natural Areas Inventory Occurrence
- Bald Eagle Nest

#### GOLDER OBSERVED SPECIES

- Gopher Tortoise
- Long Spurred Mint
- Bald Eagle
- Eastern Indigo Snake
- Southeastern American Kestrel
- Bald Eagle Nest (Pot.)
- Sherman's Fox Squirrel
- Florida Sandhill Crane
- Florida Scrub Jay

#### REFERENCE

Substations and Right-of-Way: Progress Energy Florida & Golder Associates Inc., 2009; Roads: Florida Department of Transportation, 2010; Railroads: FDEP, 1992; Listed Species Data: Florida Natural Areas Inventory, 2006 and Golder Observed, 2009; Bald Eagle Nest Data: Florida Fish & Wildlife Conservation Commission, 2004; Wood Stork Colony Data: U.S. Fish & Wildlife Service, 2009; Aerials: FDOT, 2008

NOTE: Please refer to Index page for the portions of the Levy - Central Florida South line that are within Wood Stork Core Foraging Areas.

#### PROGRESS ENERGY FLORIDA LEVY NUCLEAR PLANT

#### LEVY - CENTRAL FLORIDA SOUTH LISTED SPECIES MAP



MXD File No. 093-89547H006			SCALE AS SHOWN	REV. 0
DESIGN	DLH	16 Dec 2009	<b>FIGURE 6</b> <b>PAGE 22 OF 29</b>	
GIS	DLH	24 Feb 2010		
CHECK	SAR	24 Feb 2010		
REVIEW	KB	24 Feb 2010		





#### LEGEND

- LCFS Right-of-Way
- Florida Natural Areas Inventory Occurrence
- ✱ Bald Eagle Nest

#### GOLDER OBSERVED SPECIES

- ▲ Gopher Tortoise
- Long Spurred Mint
- Bald Eagle
- ▲ Eastern Indigo Snake
- Southeastern American Kestrel
- ◆ Bald Eagle Nest (Pot.)
- ★ Sherman's Fox Squirrel
- Florida Sandhill Crane
- Florida Scrub Jay

#### REFERENCE

Substations and Right-of-Way: Progress Energy Florida & Golder Associates Inc., 2009; Roads: Florida Department of Transportation, 2010; Railroads: FDEP, 1992; Listed Species Data: Florida Natural Areas Inventory, 2006 and Golder Observed, 2009; Bald Eagle Nest Data: Florida Fish & Wildlife Conservation Commission, 2004; Wood Stork Colony Data: U.S. Fish & Wildlife Service, 2009; Aerials: FDOT, 2008

NOTE: Please refer to Index page for the portions of the Levy - Central Florida South line that are within Wood Stork Core Foraging Areas.

#### PROGRESS ENERGY FLORIDA LEVY NUCLEAR PLANT

#### LEVY - CENTRAL FLORIDA SOUTH LISTED SPECIES MAP



MXD File No. 093-89547H006		SCALE AS SHOWN	REV. 0
DESIGN	DLH	16 Dec 2009	FIGURE 6 PAGE 23 OF 29
GIS	DLH	24 Feb 2010	
CHECK	SAR	24 Feb 2010	
REVIEW	KB	24 Feb 2010	



F:\PROJECTS\2009 PROJ\093-89547 PEECF Wetland Delineation T&E Surveys\SH - ERP LCFS Route\GIS\MXD\093-89547\H006 FNA\mxd



#### LEGEND

- LCFS Right-of-Way Florida Natural Areas Inventory Occurrence  
 Bald Eagle Nest

#### GOLDER OBSERVED SPECIES

- |                        |                               |                        |
|------------------------|-------------------------------|------------------------|
| Gopher Tortoise        | Long Spurred Mint             | Bald Eagle             |
| Eastern Indigo Snake   | Southeastern American Kestrel | Bald Eagle Nest (Pot.) |
| Sherman's Fox Squirrel | Florida Sandhill Crane        |                        |
|                        | Florida Scrub Jay             |                        |

#### REFERENCE

Substations and Right-of-Way: Progress Energy Florida & Golder Associates Inc., 2009; Roads: Florida Department of Transportation, 2010; Railroads: FDEP, 1992; Listed Species Data: Florida Natural Areas Inventory, 2006 and Golder Observed, 2009; Bald Eagle Nest Data: Florida Fish & Wildlife Conservation Commission, 2004; Wood Stork Colony Data: U.S. Fish & Wildlife Service, 2009; Aerials: FDOT, 2008

400 200 0 400 Feet

NOTE: Please refer to Index page for the portions of the Levy - Central Florida South line that are within Wood Stork Core Foraging Areas.

#### PROGRESS ENERGY FLORIDA LEVY NUCLEAR PLANT

#### LEVY - CENTRAL FLORIDA SOUTH LISTED SPECIES MAP



MXD File No. 093-89547H006			SCALE AS SHOWN	REV. 0
DESIGN	DLH	16 Dec 2009	<b>FIGURE 6</b> <b>PAGE 24 OF 29</b>	
GIS	DLH	24 Feb 2010		
CHECK	SAR	24 Feb 2010		
REVIEW	KB	24 Feb 2010		