

**Pennoni Associates Inc.**  
Consulting Engineers  

---

100 North Wilkes-Barre Blvd  
Suite 409  
Wilkes-Barre, PA 18702  
Phone: (570) 824-2200  
Fax: (570) 824-0800



**BINDER 5 OF 6**

**EROSION AND SEDIMENTATION**  
**CONTROL PLAN NARRATIVE**

**Bell Bend Nuclear Power Plant**  
**Salem Township**  
**Luzerne County, PA**

**Applicant**

---

**PPL Bell Bend, LLC**  
38 Bomboy Lane  
Suite 2  
Berwick, PA 18603

**Application Date**

---

November 12, 2010



**PPLS0902**

**Binder 4 of 6 – Erosion and Sedimentation Control Plan Narrative**

**Table of Contents**

I. EXECUTIVE SUMMARY .....1

II. EXISTING LAND USE AND SITE FEATURES .....1

III. PROPOSED LAND USE AND SITE FEATURES .....2

IV. ANALYSIS OF PROJECT IMPACT ON DOWNSTREAM WATERCOURSES .....2

V. SOILS .....2

VI. SEQUENCE OF EARTHMOVING OPERATIONS .....8

VII. EROSION CONTROL MEASURES .....27

VIII. SEEDING .....28

IX. MAINTENANCE .....29

X. SUMMARY .....30

**Appendices**

Appendix A	Location Map
Appendix B	Soils Map
Appendix C	Slope Protection Calculations
Appendix D	Silt Barrier Fence Calculations
Appendix E	Sediment Basin Calculations
Appendix F	Sediment Trap Calculations
Appendix G	Outlet Protection Calculations
Appendix H	Swale Calculations (see Binder 6 of 6)
Appendix I	Runoff Calculation Summary
Appendix J	Plan Designer Qualifications

**Binder 5 of 6 – Erosion and Sedimentation Control Plan Narrative (Continued)**

Appendix K	Drainage Area Maps
• Map 1	Pre-Development Drainage Areas
• Map 2	Post Development Drainage Areas
• Map 3	Post Development Drainage Areas to Rain Gardens
• SF Map 1-7	Silt Barrier Fence Drainage Areas
• SB&T Map 1-7	Sediment Basin and Trap Drainage Areas
• SWL Map 1-6	Drainage Areas to Swales (Permanent)
• E&S SWL Map 1-7	Drainage Areas to Swales (Temporary)

**Binder 6 of 6 – Erosion and Sedimentation Control Plan Narrative (Continued)**

Appendix H	Swale Calculations
•	Permanent
•	Temporary

**APPENDIX K**  
**Drainage Area Maps**



POINT OF INTEREST DRAINAGE AREA ——— OR ○

**Pennoni Associates Inc.** 100 N. Wilkes-Barre Blvd., Suite 409, Wilkes-Barre, PA 18702 Engineers • Surveyors • Planners • Landscape Architects



DATE	NO.	REVISIONS	BY

ALL DIMENSIONS ARE IN FEET UNLESS OTHERWISE SPECIFIED.  
VERTICAL CURVES ARE SHOWN BY THE METHOD OF GRADE INTERPOLATION.

**BELL BEND NUCLEAR POWER PLANT UNISTAR NUCLEAR PRE-DEVELOPMENT DRAINAGE AREA**  
**MAP 1**  
PPL BELL BEND, LLC  
BELL BEND, PA 18011

**Pennoni Associates Inc.**  
100 N. Wilkes-Barre Blvd., Suite 409, Wilkes-Barre, PA 18702  
TEL: 570-824-2200 FAX: 570-824-0800

SCALE	1" = 50'
DRAWN BY	LE
CHECKED BY	
APPROVED BY	
DATE	

MAP 1





POINT OF INTEREST DRAINAGE AREA ——— OR ○

**NOTE:**  
 ALL DRAINAGE AREAS ARE COLOR CODED.  
 AREAS OF LIKE COLOR ARE ASSOCIATED WITH THE SAME POI.  
 HATCHING DESIGNATES THE PORTION OF THE DRAINAGE AREA WHICH IS BYPASS.  
 CROSS HATCHING DESIGNATES THE PORTION OF THE DRAINAGE AREA WHICH IS CONTROLLED BY THE BASIN.

**Pennoni Associates Inc.** 100 N. Wilkes-Barre Blvd, Suite 409, Wilkes-Barre, PA 18702 Engineers • Surveyors • Planners • Landscape Architects



DATE	NO.	REVISIONS	DATE	BY

ALL DIMENSIONS MUST BE VERIFIED BY THE FIELD PRIOR TO CONSTRUCTION. NOTIFY PENNONI ASSOCIATES INC. IMMEDIATELY UPON DISCOVERY OF ANY DISCREPANCIES.

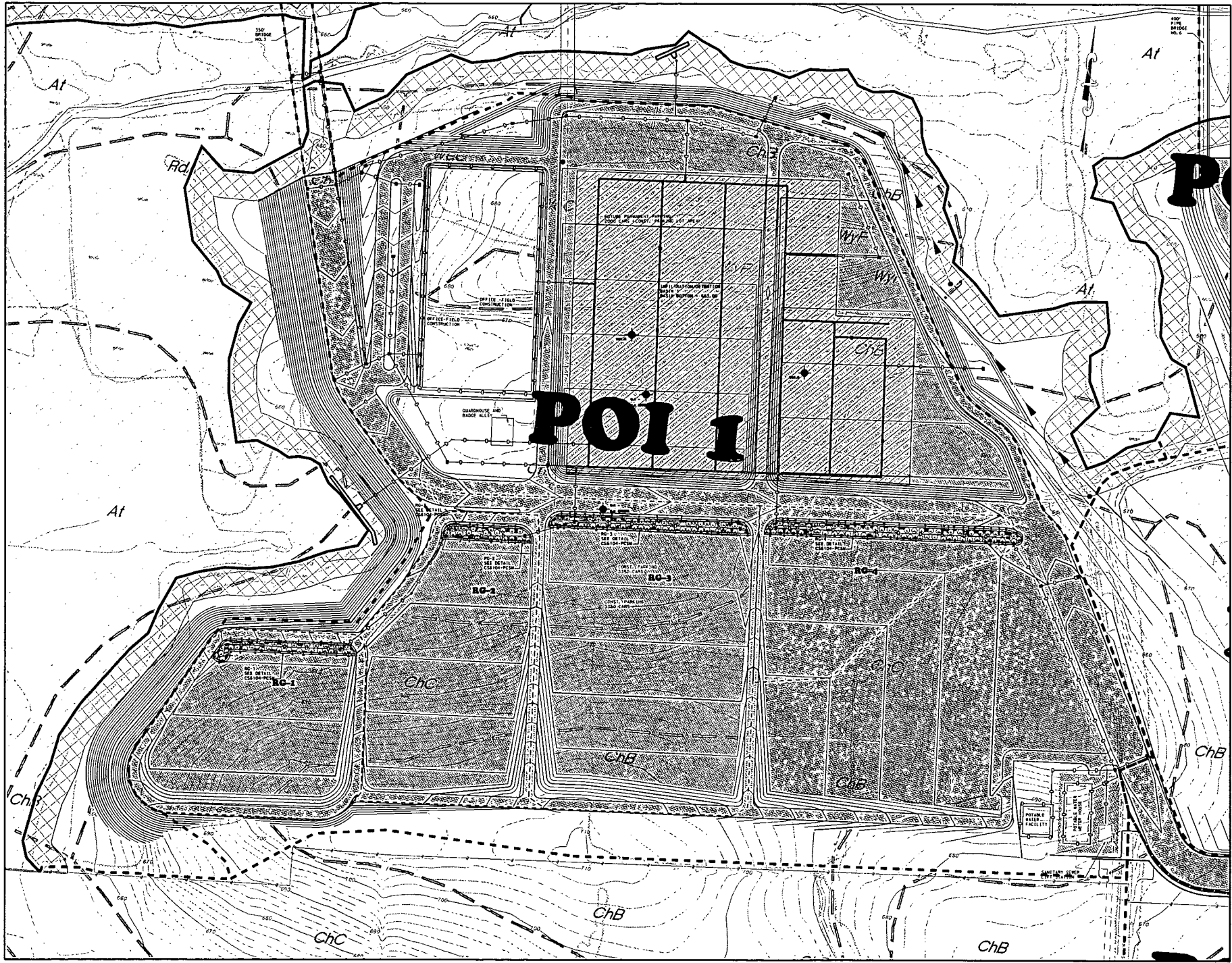
**BELL BEND NUCLEAR POWER PLANT  
 POST-DEVELOPMENT DRAINAGE AREA  
 MAP 2  
 PPL BELL BEND, LLC**

100 N. Wilkes-Barre Blvd, Suite 409, Wilkes-Barre, PA 18702  
 TEL: 570-824-2200 FAX: 570-824-0800

ALL INFORMATION CONTAINED HEREIN IS THE PROPERTY OF PENNONI ASSOCIATES INC. AND IS TO BE USED ONLY FOR THE PROJECT AND SITE SPECIFICALLY IDENTIFIED HEREIN. NO PART OF THIS DOCUMENT IS TO BE REPRODUCED OR TRANSMITTED IN ANY FORM OR BY ANY MEANS, ELECTRONIC OR MECHANICAL, INCLUDING PHOTOCOPYING, RECORDING, OR BY ANY INFORMATION STORAGE AND RETRIEVAL SYSTEM, WITHOUT THE WRITTEN PERMISSION OF PENNONI ASSOCIATES INC.

SCALE	DRAWING NO.
1" = 50'	MAP 2
DESIGNED BY	
DRAWN BY	
CHECKED BY	
APPROVED BY	





**Pennoni Associates Inc.**

100 N. Wilkes-Barre Blvd, Suite 409, Wilkes-Barre, PA 18702  
 TEL: 570-824-2200 FAX: 570-824-0900

Engineers • Surveyors • Planners Landscape Architects

SCALE	1" = 50'	DRAWING NO.	MAP 3
DATE	1/08		
DESIGNED BY			
CHECKED BY			
APPROVED BY			

**BELL BEND NUCLEAR POWER PLANT UNISTAR NUCLEAR  
 POST-DEVELOPMENT RAIN GARDEN DRAINAGE AREA  
 MAP 3  
 PPL BELL BEND, LLC**

**Pennoni**  
 PENNONI ASSOCIATES INC.  
 CONSULTING ENGINEERS

ALL CONSTRUCTION SHALL BE IN ACCORDANCE WITH THE LATEST EDITIONS OF THE PENNONI STANDARD SPECIFICATIONS FOR CONSTRUCTION.

DATE: 1/08  
 DRAWN BY: [Name]  
 CHECKED BY: [Name]  
 APPROVED BY: [Name]



PENNONI ASSOCIATES INC.  
CONSULTING ENGINEERS

DATE	NO.	REVISION	BY

ALL DIMENSIONS UNLESS OTHERWISE SPECIFIED ARE IN FEET AND DECIMALS THEREOF.  
 UNLESS OTHERWISE SPECIFIED, ALL DIMENSIONS ARE TO FACE.

100 N. Wilkes-Barre Blvd, Suite 409, Wilkes-Barre, PA 18702  
 TEL: 570-824-2200 FAX: 570-824-0800

**Pennoni Associates Inc.**

**BELL BEND NUCLEAR POWER PLANT**

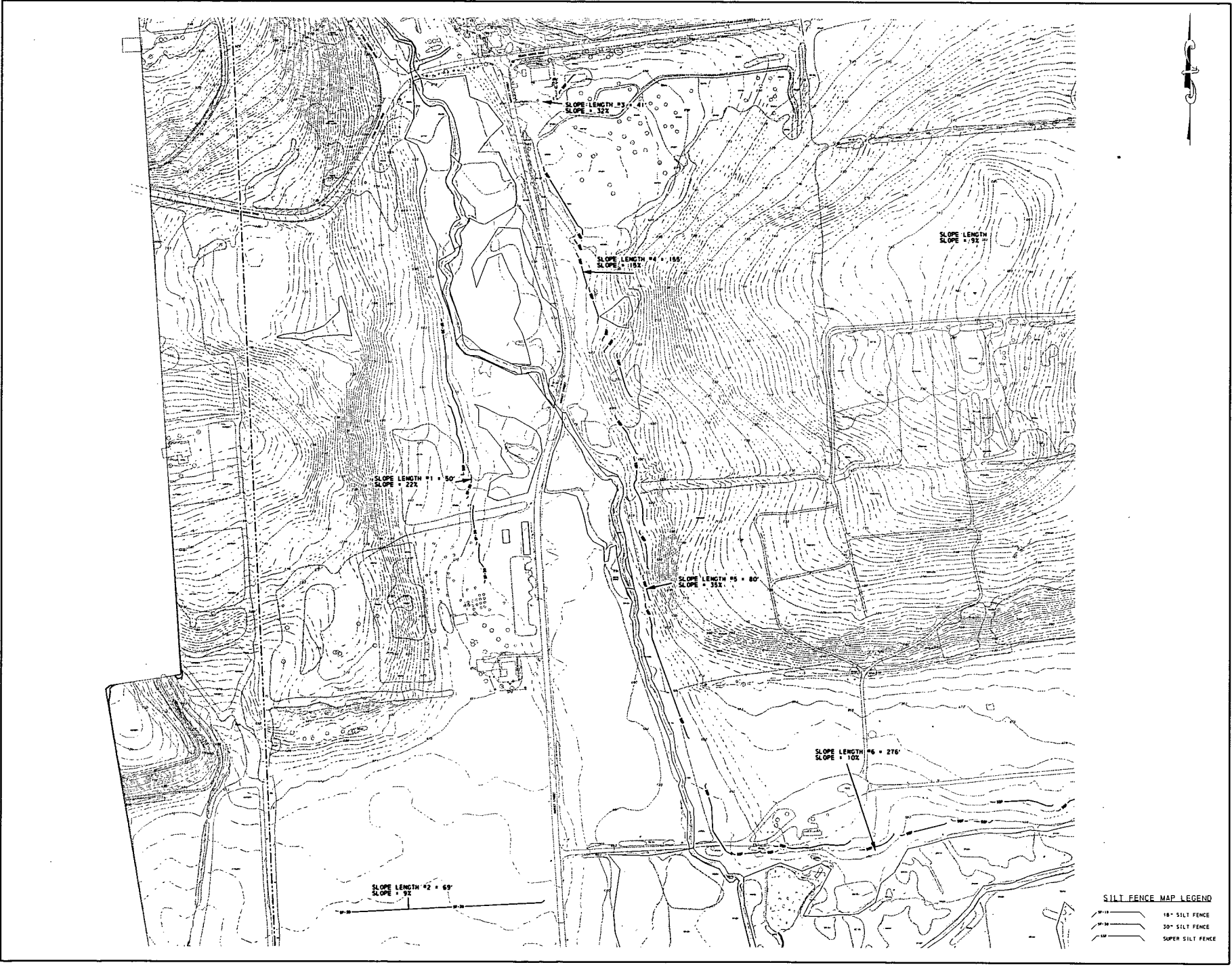
SALLEN TOWNSHIP, PENNSYLVANIA

**SILT FENCE MAP**  
 PPL BELL BEND, LLC  
 8 HANTRY LAKE  
 BELLEVILLE, MO 63713

DATE: 11/11/11  
 DRAWN BY: MCK  
 CHECKED BY: MCK  
 DATE: 11/11/11  
 APPROVED BY: JPN

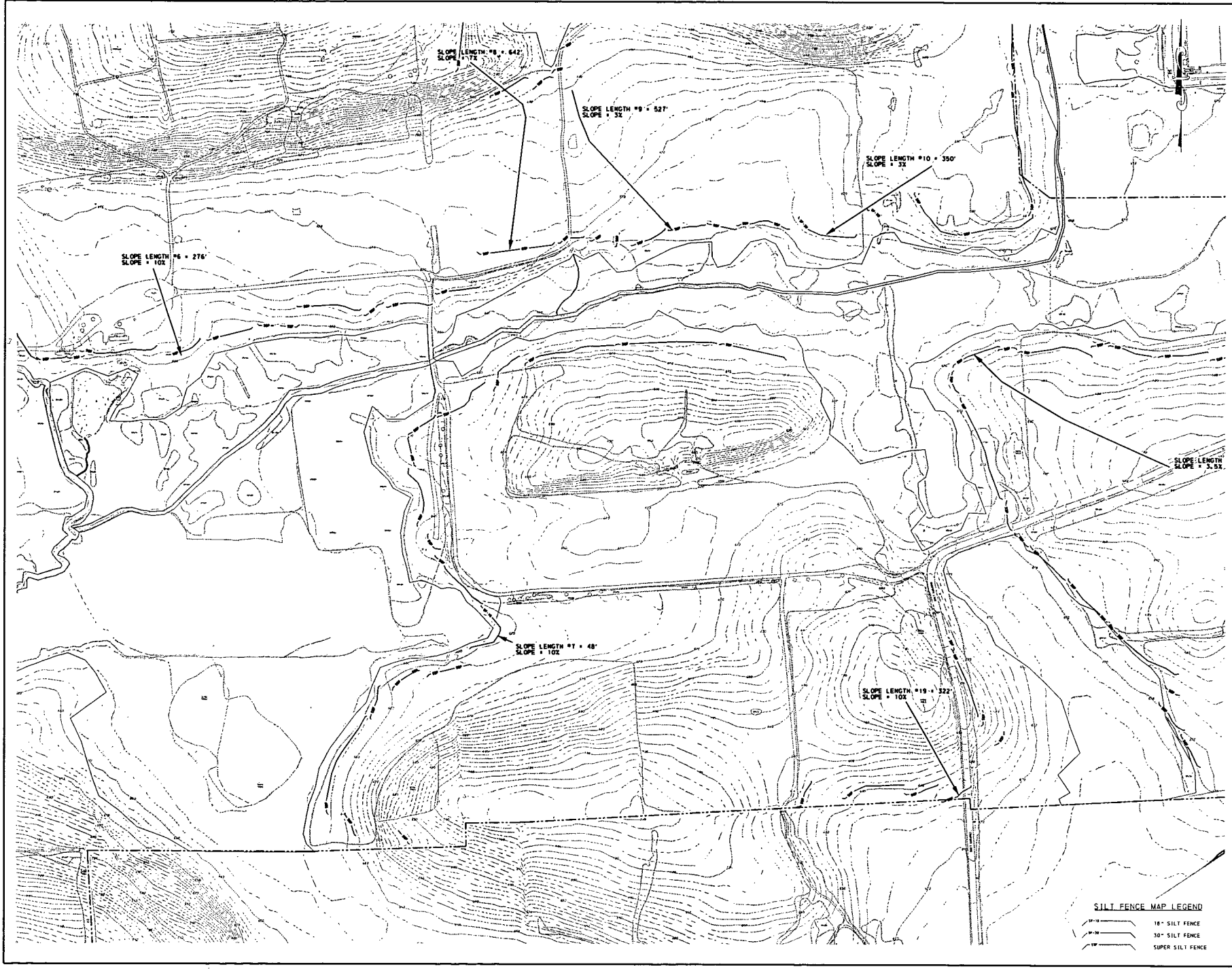
PROJECT NO.	11111
SHEET	1 OF 7

SCALE: 1" = 40'  
 DRAWING NO. SF MAP1



**SILT FENCE MAP LEGEND**

- 18" SILT FENCE
- 30" SILT FENCE
- SUPER SILT FENCE



**SILT FENCE MAP LEGEND**

- 18" SILT FENCE
- 30" SILT FENCE
- SUPER SILT FENCE

**Pennoni Associates Inc.**

100 N. Wilkes-Barre Blvd, Suite 409, Wilkes-Barre, PA 18702  
 TEL: 570-824-2200 FAX: 570-824-0800

Engineers • Surveyors • Planners • Landscape Architects

**BELL BEND NUCLEAR POWER PLANT**  
 SLOTTED TOWNSHIP, PENNSYLVANIA

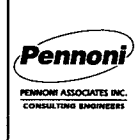
**SILT FENCE MAP**  
 PPL BELL BEND, LLC  
 30 HANCOCK AVE  
 BETHLEHEM, PA 18010

DATE	NO.	DESCRIPTION

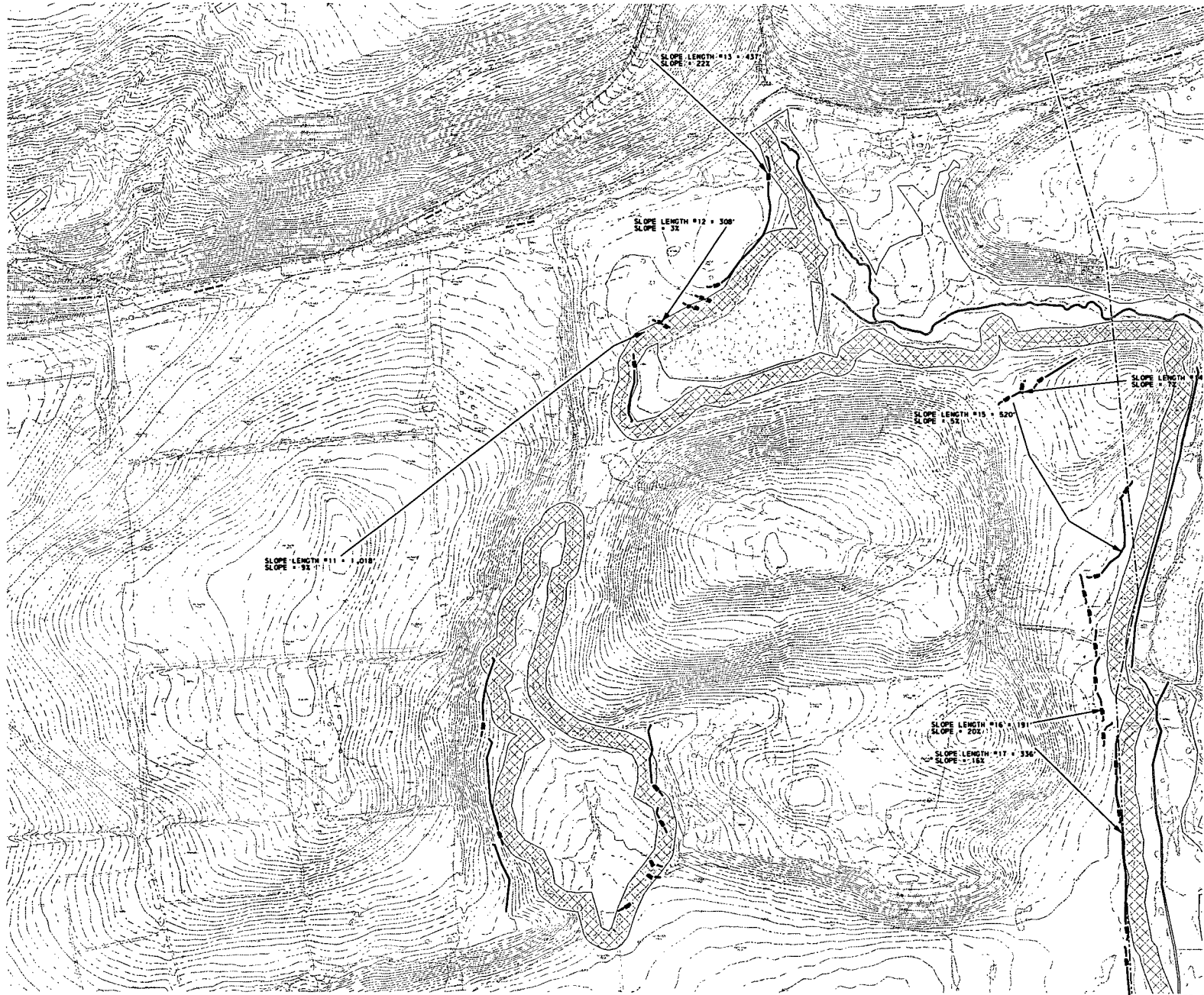
SCALE	1" = 100'
DRAWN BY	WCL
CHECKED BY	WCL
DATE	11/20/08
PROJECT	SF MAP 2

THIS DOCUMENT IS THE PROPERTY OF PENNONI ASSOCIATES INC. IT IS TO BE USED ONLY FOR THE PROJECT AND SITE SPECIFICALLY IDENTIFIED HEREON. IT IS NOT TO BE REPRODUCED, COPIED, EITHER WHOLLY OR IN PART, OR TRANSMITTED IN ANY FORM OR BY ANY MEANS, ELECTRONIC OR MECHANICAL, INCLUDING PHOTOCOPYING, RECORDING, OR BY ANY INFORMATION STORAGE AND RETRIEVAL SYSTEM, WITHOUT THE WRITTEN PERMISSION OF PENNONI ASSOCIATES INC.

NO.	DATE	DESCRIPTION







**SILT FENCE MAP LEGEND**

18"	18" SILT FENCE
30"	30" SILT FENCE
36"	36" SILT FENCE
48"	SUPER SILT FENCE

**Pennoni Associates Inc.**

100 N. Wilkes-Barre Blvd, Suite 409, Wilkes-Barre, PA 18702  
 TEL: 570-824-2800 FAX: 570-824-0800

Engineers • Surveyors • Planners • Landscape Architects

**BELL BEND NUCLEAR POWER PLANT**  
 SLOTTED SAND FILTERS

**SILT FENCE MAP**  
 PPL BELL BEND, LLC  
 18 HUNTER LANE  
 BETHLEHEM, PA 18020

SCALE	1" = 20'
DRAWN BY	WCS
CHECKED BY	WCS
DATE	11/10/08
APPROVED BY	JW
PROJECT NO.	080000000000000000
SHEET	3 OF 7
DATE	11/10/08
BY	JW
PROJECT	BELL BEND NUCLEAR POWER PLANT
PROJECT NO.	080000000000000000
SHEET	3 OF 7
DATE	11/10/08
BY	JW



PROJECT NO.	080000000000000000
SHEET	3 OF 7
DATE	11/10/08
BY	JW

CONSTRUCTION AND/OR MAINTENANCE BY	
PROPOSED PROJECT	
PROPOSED PROJECT NO.	

DATE	11/10/08
BY	JW
PROJECT	BELL BEND NUCLEAR POWER PLANT
PROJECT NO.	080000000000000000
SHEET	3 OF 7
DATE	11/10/08
BY	JW

DATE	11/10/08
BY	JW
PROJECT	BELL BEND NUCLEAR POWER PLANT
PROJECT NO.	080000000000000000
SHEET	3 OF 7
DATE	11/10/08
BY	JW

DATE	11/10/08
BY	JW
PROJECT	BELL BEND NUCLEAR POWER PLANT
PROJECT NO.	080000000000000000
SHEET	3 OF 7
DATE	11/10/08
BY	JW



**SILT FENCE MAP LEGEND**

18" SILT FENCE  
 30" SILT FENCE  
 SUPER SILT FENCE

**Pennoni Associates Inc.**

100 N. Wilkes-Barre Blvd, Suite 409, Wilkes-Barre, PA 18702  
 TEL: 570-824-2800 FAX: 570-824-0800

Engineers • Surveyors • Planners • Landscape Architects

**BELL BEND NUCLEAR POWER PLANT**  
 SALER TOWNSHIP, PENNSYLVANIA

**SILT FENCE MAP**  
 PPL BELL BEND, LLC  
 100 W. MARKET AVE.  
 BETHLEHEM, PA 18020

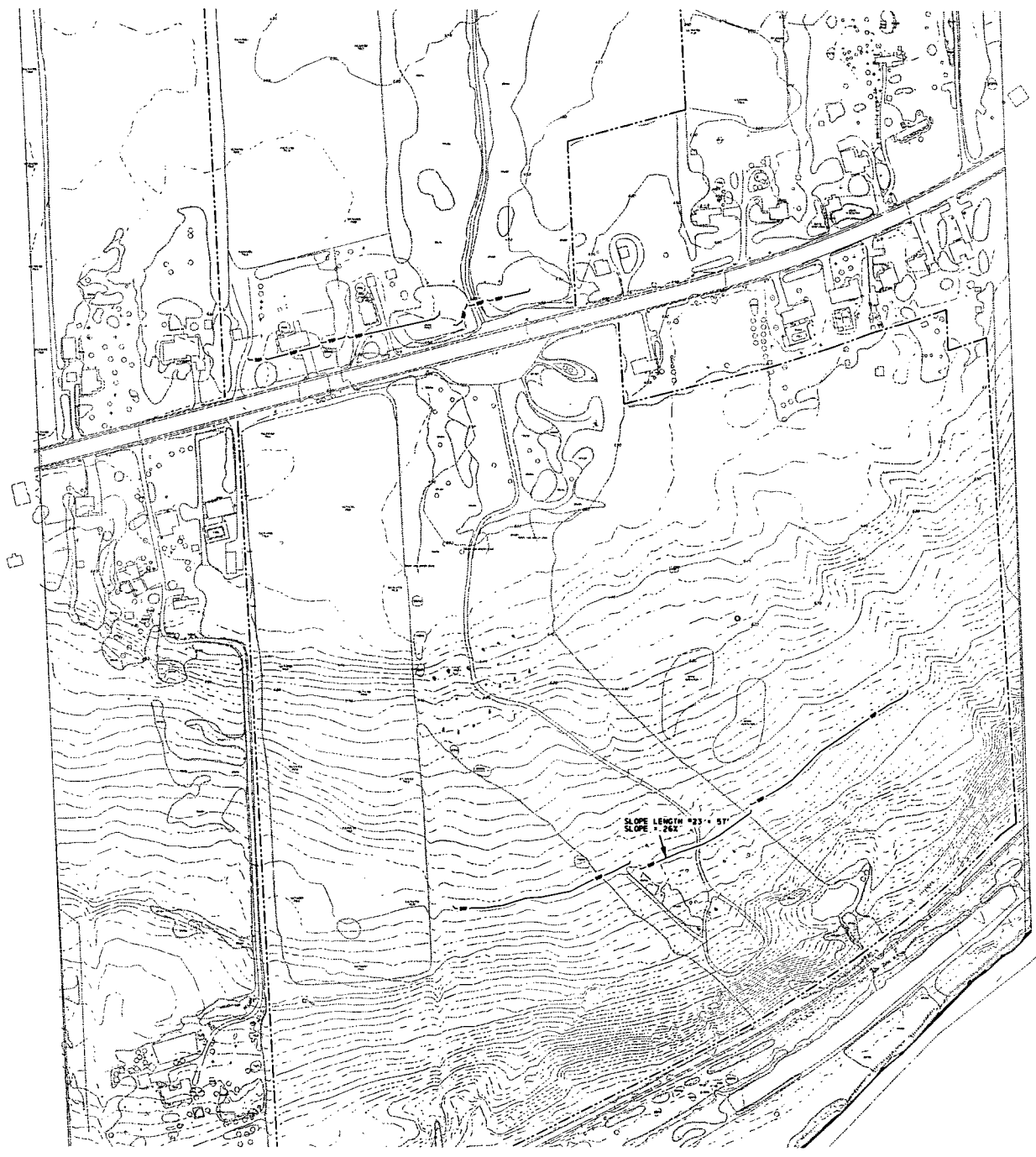
ALL DIMENSIONS ARE IN FEET UNLESS NOTED OTHERWISE.  
 NORTH IS INDICATED BY THE NORTH ARROW.

SCALE	1" = 40'	PROJECT NO.	PPL-0800
DRAWN BY	MD	SHEET	1 OF 7
CHECKED BY	MD		
DATE	11/15/08		
APPROVED	JPL		

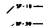
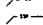

**SF MAP4**



NO. 0	DATE	NO.	BY



**SILT FENCE MAP LEGEND**

 18" SILT FENCE  
 30" SILT FENCE  
 SUPER SILT FENCE



**Pennoni Associates Inc.** 100 N. Wilkes-Barre Blvd, Suite 409, Wilkes-Barre, PA 18702 Engineers • Surveyors • Planners • Landscape Architects



DATE	NO.	DESCRIPTION	BY

THIS DOCUMENT AND THE INFORMATION CONTAINED HEREIN ARE THE PROPERTY OF PENNONI ASSOCIATES INC. AND ARE NOT TO BE REPRODUCED OR TRANSMITTED IN ANY FORM OR BY ANY MEANS, ELECTRONIC OR MECHANICAL, INCLUDING PHOTOCOPYING, RECORDING, OR BY ANY INFORMATION STORAGE AND RETRIEVAL SYSTEM.

**BELL BEND NUCLEAR POWER PLANT**  
SILT FENCE MAP

**SILT FENCE MAP**  
PPL BELL BEND, LLC  
18 HUNTERY LAKE  
BETHLEHEM, PA 18020

ALL INFORMATION CONTAINED ON THIS DRAWING IS THE PROPERTY OF PENNONI ASSOCIATES INC. AND IS NOT TO BE REPRODUCED OR TRANSMITTED IN ANY FORM OR BY ANY MEANS, ELECTRONIC OR MECHANICAL, INCLUDING PHOTOCOPYING, RECORDING, OR BY ANY INFORMATION STORAGE AND RETRIEVAL SYSTEM.

SCALE	DATE	DRAWING NO.
1" = 100'		

DATE	BY	CHECKED	APPROVED

**SF MAPS**

DATE	BY	CHECKED	APPROVED





**SILT FENCE MAP LEGEND**

18" SILT FENCE  
 30" SILT FENCE  
 SUPER SILT FENCE

**Pennoni Associates Inc.**

100 N. Wilkes-Barre Blvd., Suite 408, Wilkes-Barre, PA 18702  
 TEL: 570-854-2500 FAX: 570-824-0600  
 Engineers • Surveyors • Planners • Landscape Architects

**BELL BEND NUCLEAR POWER PLANT**  
 CALLED TOWNSHIP, PENNSYLVANIA

**SILT FENCE MAP**  
 PPL BELL BEND, LLC  
 20 HENRY AVENUE  
 BETHLEHEM, PA 18020

DATE	BY	REVISION

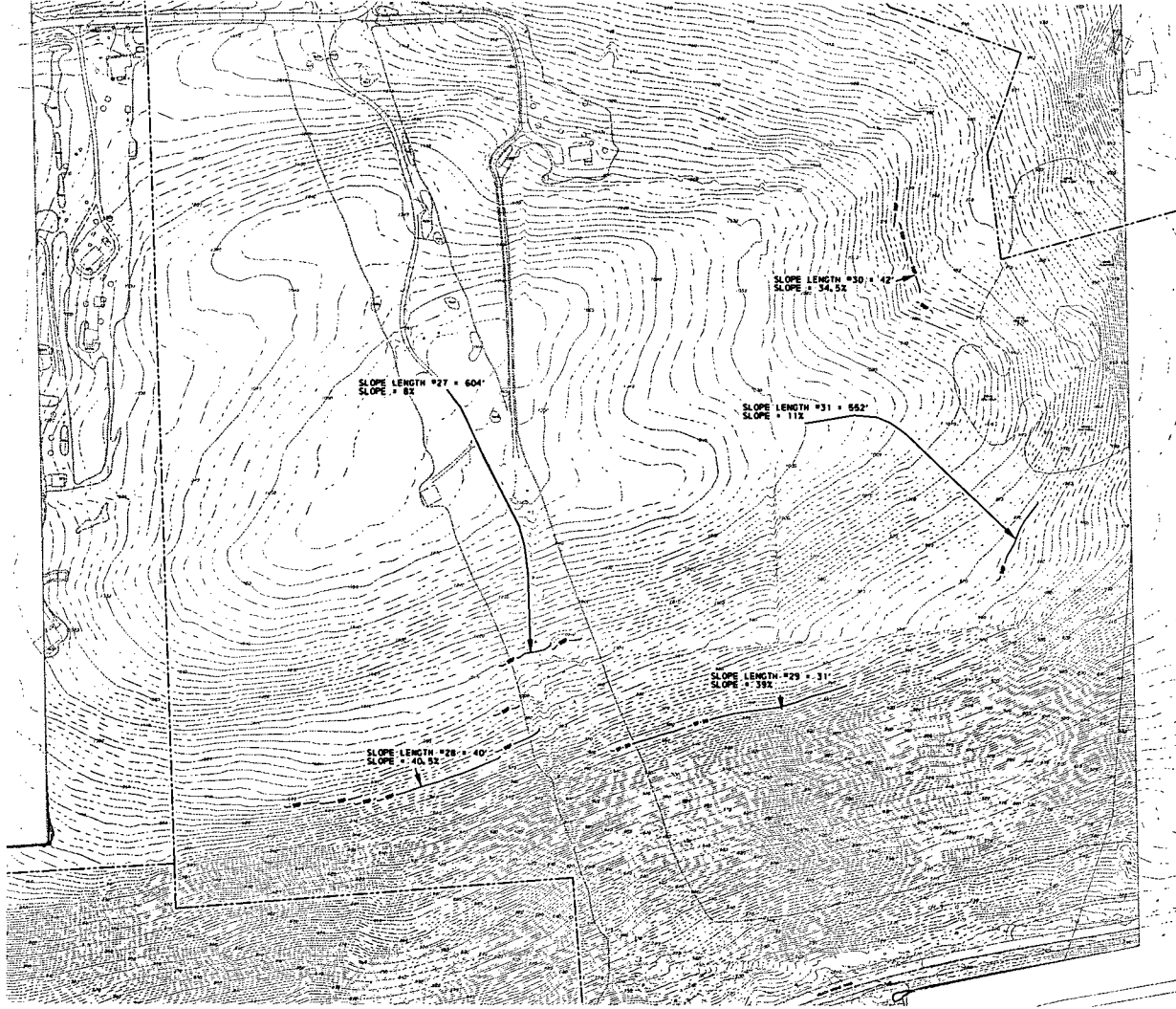
SCALE: 1" = 100'  
 DRAWN BY: [ ]  
 DATE: [ ]  
 CHECKED BY: [ ]  
 APPROVED BY: [ ]

**SF MAP6**

NO.	DATE	DESCRIPTION

ALL DIMENSIONS AND AREAS SHOWN ON THIS MAP ARE APPROXIMATE AND SUBJECT TO FIELD VERIFICATION.





**SILT FENCE MAP LEGEND**

- 18" SILT FENCE
- 30" SILT FENCE
- SUPER SILT FENCE

**Pennoni Associates Inc.**

100 N. Wilkes-Barre Blvd, Suite 406, Wilkes-Barre, PA 18702  
 TEL: 570-824-2200 FAX: 570-824-0800  
 Engineers • Surveyors • Planners • Landscape Architects

**BELL BEND NUCLEAR POWER PLANT**  
 Silt Fence Map

**SILT FENCE MAP**  
 PPL BELL BEND, LLC  
 100 BELL BEND LANE  
 BELL BEND, PA 16823

DATE: 10/11/11  
 DRAWN BY: JMB  
 CHECKED BY: JMB  
 SCALE: 1" = 100'

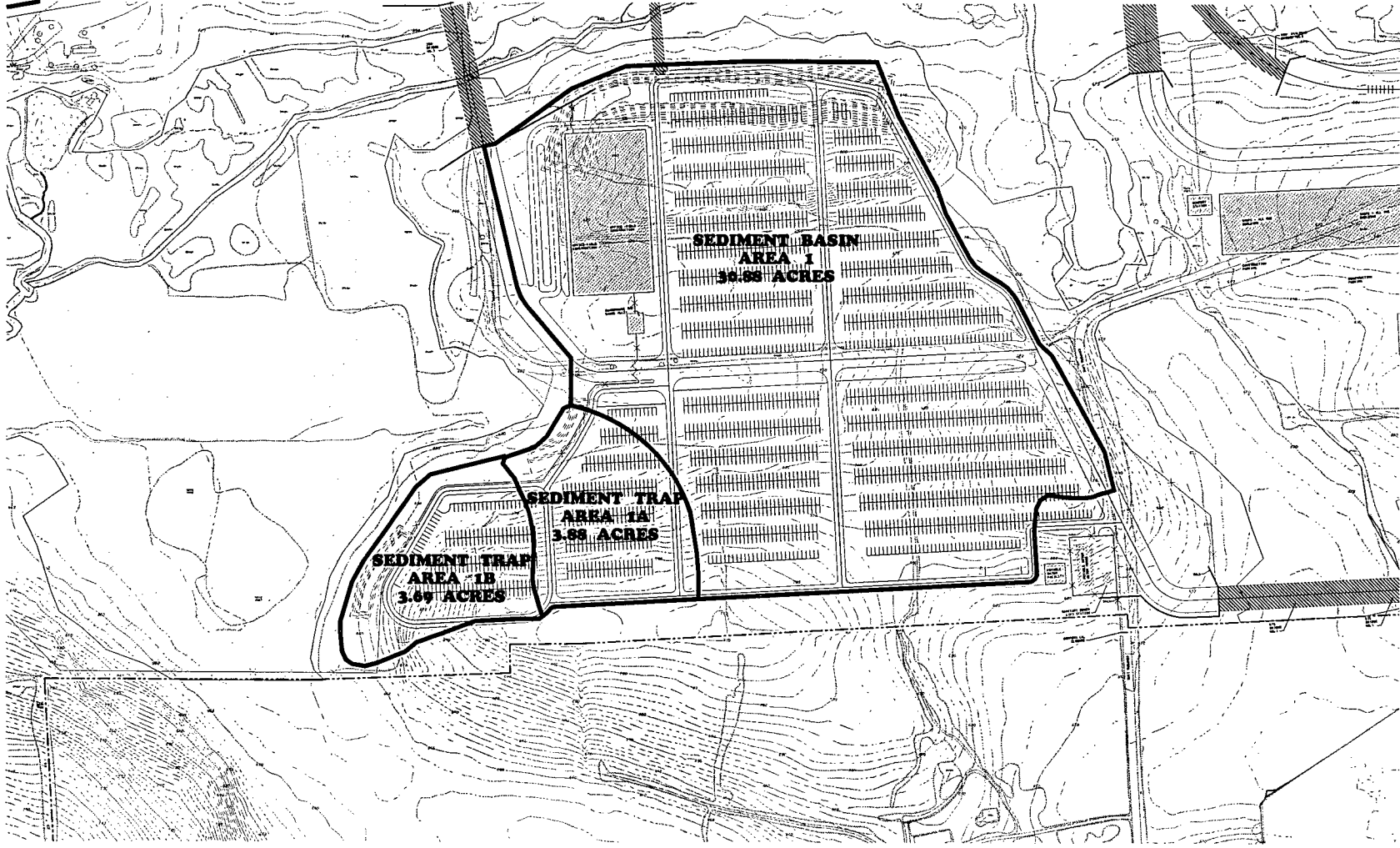
NO. SHEETS	1 OF 1
SHEET NO.	1 OF 1

**SF MAP7**

DATE	NO.	REV.	DESCRIPTION

ALL INFORMATION ON THIS MAP IS THE PROPERTY OF PENNONI ASSOCIATES INC. AND IS TO BE USED ONLY FOR THE PROJECT AND SITE SPECIFICALLY IDENTIFIED HEREON.

**Pennoni**  
 PENNONI ASSOCIATES INC.  
 CONSULTING ENGINEERS



**Pennoni Associates Inc.**

100 N. Wilkes-Barre Blvd, Suite 406, Wilkes-Barre, PA 18702

TEL: 570-624-2000 FAX: 570-821-0800

Engineers • Surveyors • Planners • Landscape Architects

SCALE:	AS SHOWN
DRAWN BY:	PK
CHKD:	PK
DATE:	11/20/08
APPROVED:	PK

SHEET	1 OF 1
-------	--------

SB&T  
MAP1

**BELL BEND NUCLEAR POWER PLANT**

SALEN TOWNSHIP, PENNSYLVANIA

**SEDIMENT BASIN & TRAP MAP**

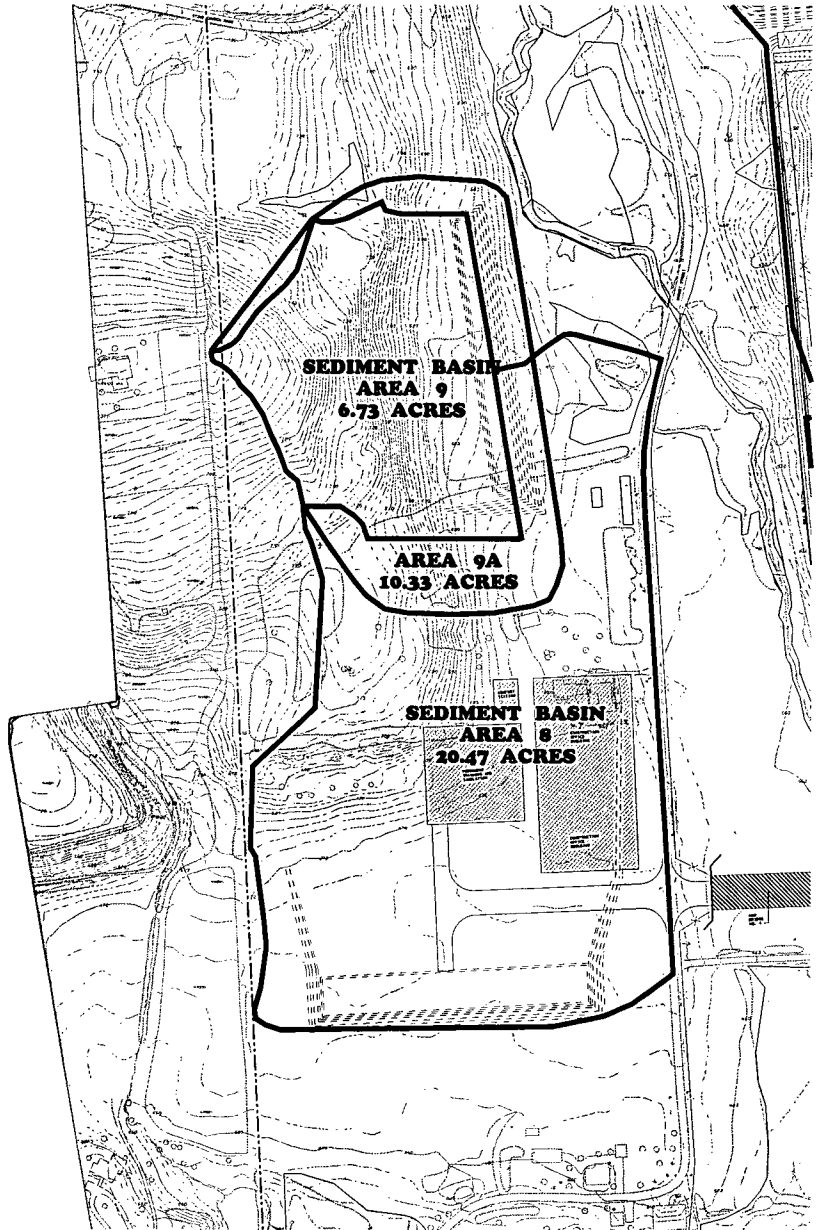
PPL BELL BEND, LLC  
18 BURNETT LANE  
BETHLEHEM, PA 18020

CONSTRUCTION SHALL BE IN ACCORDANCE WITH THE PENNSYLVANIA DEPARTMENT OF ENVIRONMENTAL PROTECTION REGULATIONS

DATE	NOV 20 2008
SCALE	AS SHOWN
SHEET	1 OF 1







**Pennoni Associates Inc.** 100 N. Wilkes-Barre Blvd, Suite 409, Wilkes-Barre, PA 18702 Engineers • Surveyors • Planners • Landscape Architects  
 TEL: 570-824-2000 FAX: 570-824-0600



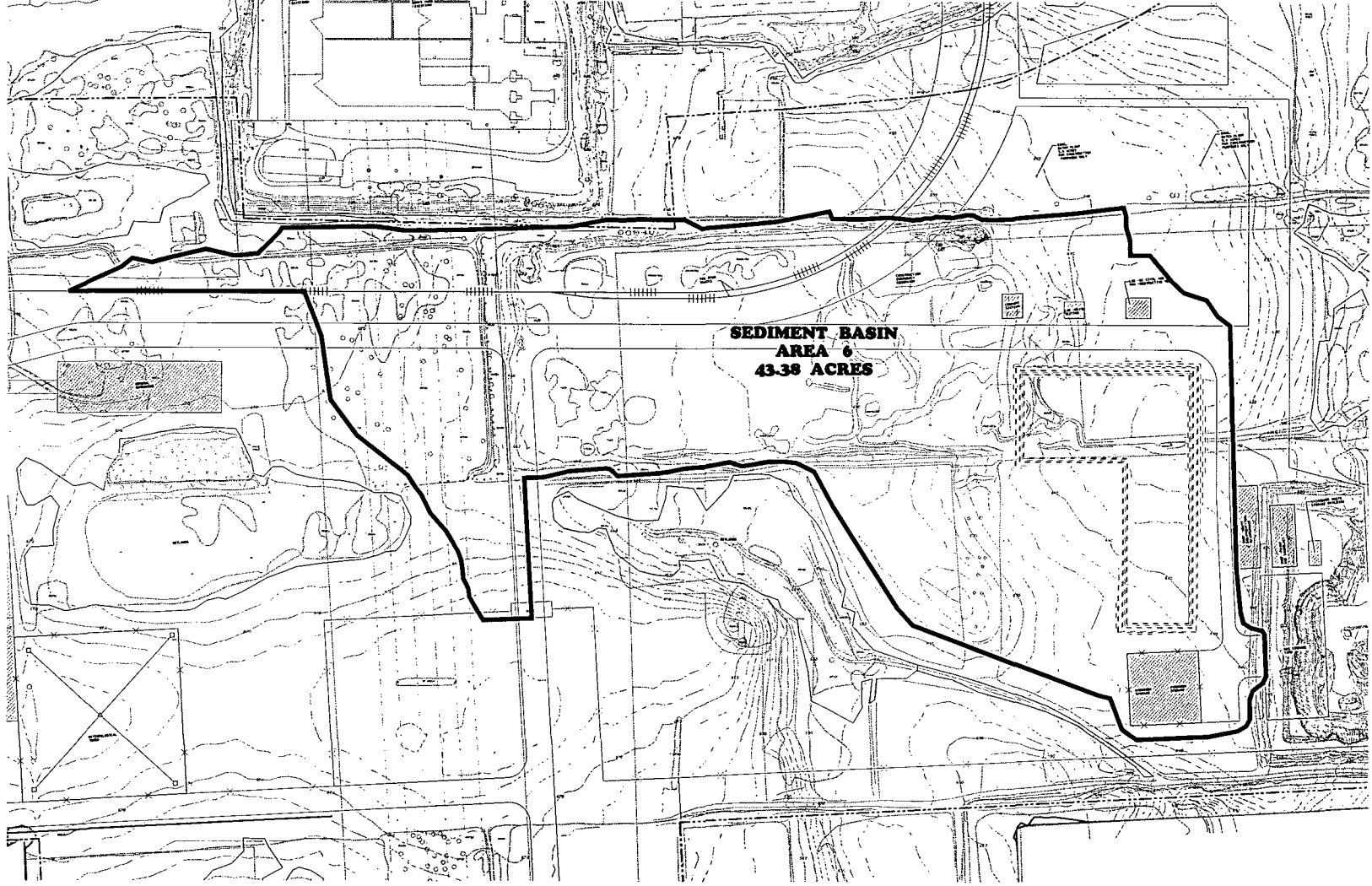
DATE	SCALE	BY	CHK'D

NO.	DATE	BY	CHK'D

**BELL BEND NUCLEAR POWER PLANT**  
 8250 TOWNSEND ROAD, BELL BEND, PA 18011  
**SEDIMENT BASIN & TRAP MAP**  
 PPL BELL BEND, LLC  
 28 BROADWAY, 10TH FLOOR  
 NEW YORK, NY 10006

ALL INFORMATION ON THIS MAP IS THE PROPERTY OF PENNONI ASSOCIATES INC. AND IS NOT TO BE REPRODUCED OR TRANSMITTED IN ANY FORM OR BY ANY MEANS, ELECTRONIC OR MECHANICAL, INCLUDING PHOTOCOPYING, RECORDING, OR BY ANY INFORMATION STORAGE AND RETRIEVAL SYSTEM, WITHOUT THE WRITTEN PERMISSION OF PENNONI ASSOCIATES INC.

SCALE	1" = 100'	DRAWING NO.	SB&T MAP2
DRAWN BY	WCL		
DATE	1/15/02		
PROJECT			



**SEDIMENT BASIN  
AREA 6  
43.38 ACRES**

**Pennoni Associates Inc.**

100 N. Wilkes-Barre Blvd, Suite 409, Wilkes-Barre, PA 18702  
TEL: 570-824-2000 FAX: 570-824-0800

Engineers • Surveyors • Planners • Landscape Architects

SCALE	AS SHOWN
DRAWN BY	MS
CHECKED BY	MS
DATE	11/20/00
APPROVED	MS

**SB&T  
MAP3**

**BELL BEND NUCLEAR POWER PLANT**  
SALIDA TOWNSHIP, PENNSYLVANIA

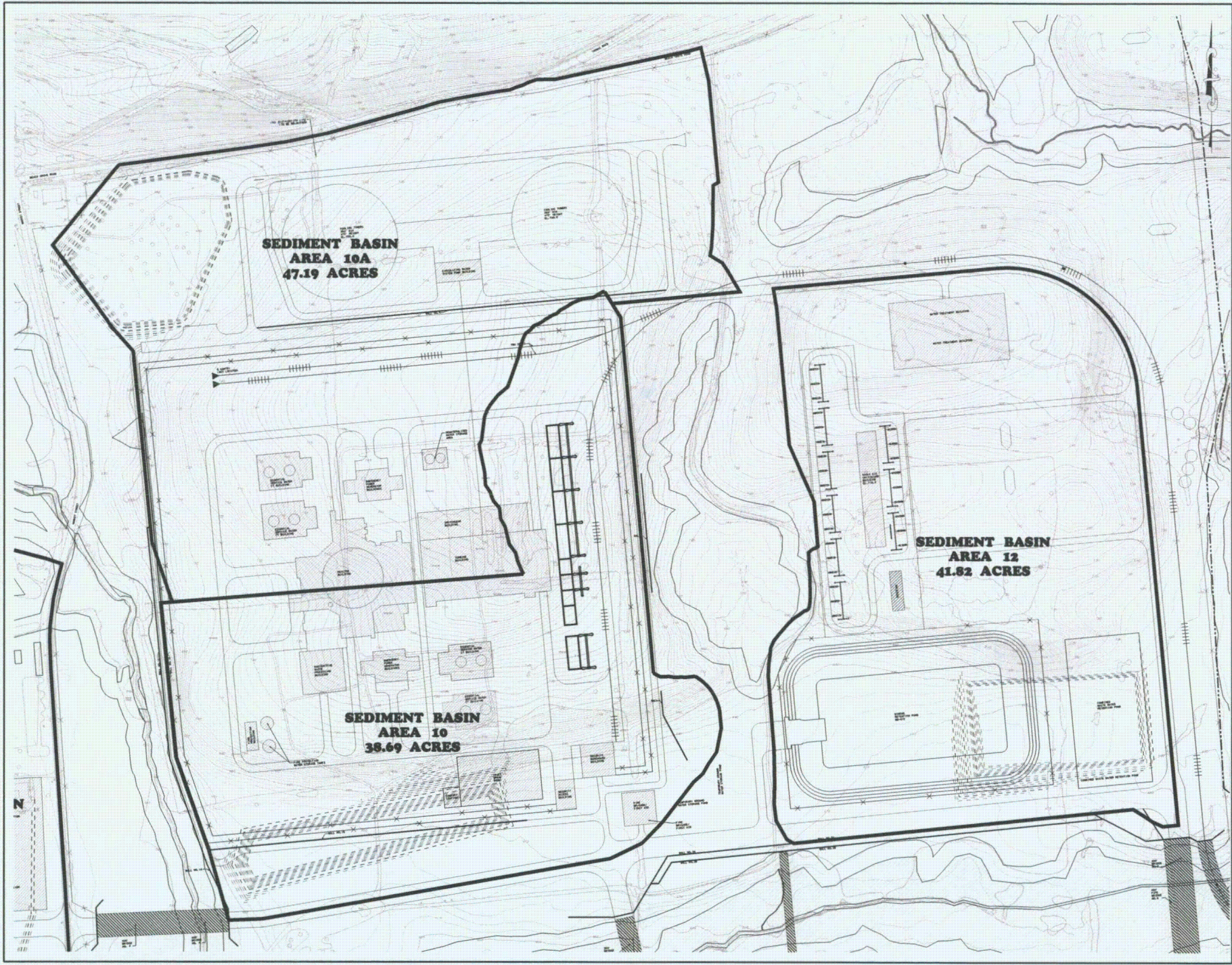
**SEDIMENT BASIN & TRAP MAP**  
PPL BELL BEND, LLC  
300 HANCOCK LANE  
BETHLEHEM, PA 18010

THIS DOCUMENT AND ALL PARTS THEREOF ARE THE PROPERTY OF PENNONI ASSOCIATES INC. NO PART OF THIS DOCUMENT IS TO BE REPRODUCED OR TRANSMITTED IN ANY FORM OR BY ANY MEANS, ELECTRONIC OR MECHANICAL, INCLUDING PHOTOCOPYING, RECORDING, OR BY ANY INFORMATION STORAGE AND RETRIEVAL SYSTEM, WITHOUT THE WRITTEN PERMISSION OF PENNONI ASSOCIATES INC.

DATE	NO.	DESCRIPTION	BY
11/20/00	0	00000000000000000000	MS







**SEDIMENT BASIN  
AREA 10A  
47.19 ACRES**

**SEDIMENT BASIN  
AREA 10  
38.69 ACRES**

**SEDIMENT BASIN  
AREA 12  
41.82 ACRES**

**Pennoni Associates Inc.**

100 N. Wilkes-Barre Blvd, Suite 409, Wilkes-Barre, PA 18702  
 TEL: 570-824-2000 FAX: 570-824-0800  
 Engineers • Surveyors • Planners • Landscape Architects

SCALE	DRAWING NO.
1" = 10'	
PROJECT BY	INCH
DATE	DATE
APPROVED	BY

	PPL/SB&T
	SHEET
	1 OF 1

**BELL BEND NUCLEAR POWER PLANT  
 SALEM TOWNSHIP, PENNSYLVANIA  
 SEDIMENT BASIN & TRAP MAP  
 PPL BELL BEND, LLC  
 SALEM TOWNSHIP, PA 18080**

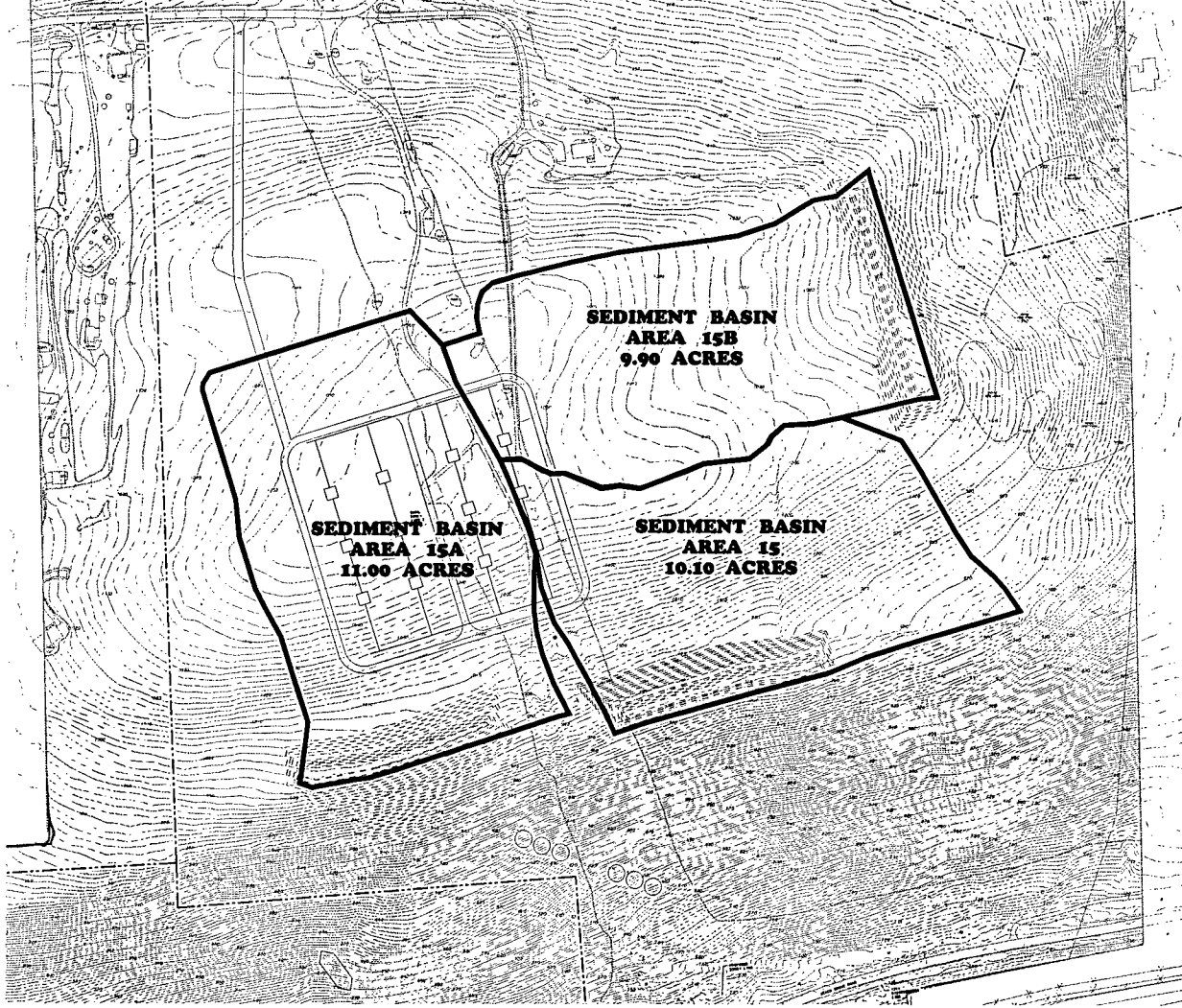
NO.	DATE	NO.	BY
1	10/01/2010	1	JK



ALL DIMENSIONS SHOWN ARE VERIFIED BY  
 FIELD SURVEY AND PHOTOGRAPHIC SURVEY  
 AND SHOWN TO BE ACCURATE WITHIN THE  
 TOLERANCES SPECIFIED IN THE NOTES

**SB&T  
 MAP4**





**Pennoni Associates Inc.**

100 N. Wilkes-Barre Blvd, Suite 409, Wilkes-Barre, PA 18702  
 TEL: 570-824-2000 FAX: 570-824-0800  
 Engineers • Surveyors • Planners • Landscape Architects

SCALE	1" = 100'
DRAWN BY	WCI
DATE	11/20/05
APPROVED	JH

PROJECT	SB&T MAP5
SHEET	2 OF 7

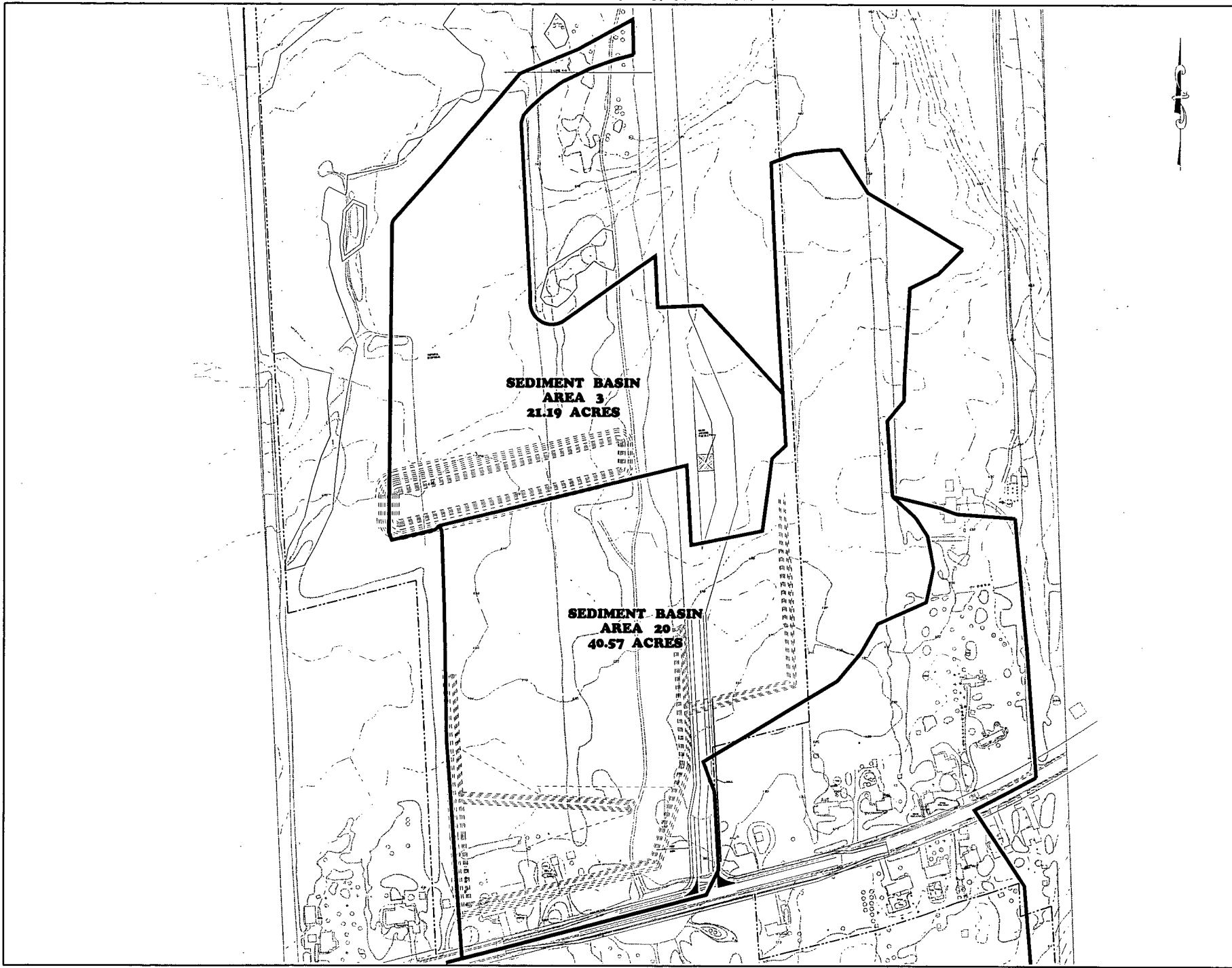
**BELL BEND NUCLEAR POWER PLANT**  
 SALEM TOWNSHIP, PENNSYLVANIA

**SEDIMENT BASIN & TRAP MAP**  
 PPL BELL BEND, LLC  
 28 HEMLOCK LANE  
 HUNTSVILLE, TN 38800

CONSTRUCTION AND MAINTENANCE OF  
 THIS PROJECT SHALL BE THE RESPONSIBILITY OF THE  
 CLIENT AND NOT PENNONI ASSOCIATES INC.

DATE	NO.	REVISIONS
ISSUED	0	00000000000000000000
		11 X 17





**Pennoni Associates Inc.**

100 N. Wilkes-Barre Blvd., Suite 409, Wilkes-Barre, PA 18702  
 TEL: 570-824-2000 FAX: 570-824-0800  
 Engineers • Surveyors • Planners • Landscape Architects

SCALE	AS SHOWN	DATE	11/11/11
DRAWN BY	WCL	CHECKED BY	WCL
DATE	11/11/11	APPROVED BY	WCL
PROJECT	SB&T MAP6		

**BELL BEND NUCLEAR POWER PLANT**  
 B&T CONSULTING, PENNONTOWN  
**SEDIMENT BASIN & TRAP MAP**  
 PPL BELL BEND, LLC  
 28 BERRY LANE  
 BETHLEHEM, PA 18010

NO.	0	DATE	11/11/11	BY	WCL
DESCRIPTION	ISSUED FOR PERMITTING				





**SEDIMENT BASIN  
AREA 20  
40.57 ACRES**

**SEDIMENT BASIN  
AREA 21  
67.33 ACRES**

**Pennoni Associates Inc.**

100 N. Wilkes-Barre Blvd, Suite 409, Wilkes-Barre, PA 18702  
 TEL: 570-824-2000 FAX: 570-824-0800  
 Engineers • Surveyors • Planners • Landscape Architects



DATE	NO.	REVISION	BY

ALL DIMENSIONS ARE TO BE SHOWN BY  
 THE CENTERLINE UNLESS OTHERWISE NOTED  
 MULTIPLE OF FOOT DIMENSIONS ARE TO BE  
 INDICATED BY THE FOLLOWING

**BELL BEND NUCLEAR POWER PLANT**  
 SALES TOWNSHIP, PENNSYLVANIA  
**SEDIMENT BASIN & TRAP MAP**  
 PPL BELL BEND, LLC  
 25 HANCOCK LANE  
 BELL BEND, PA 18801

SCALE	1" = 100'
DRAWN BY	MC
CHECKED BY	
DATE	11/20/09
APPROVED BY	

PROJECT	7 OF 7
PROJECT NO.	
DATE	
BY	

**SB&T  
MAP 7**





**Pennoni Associates Inc.**

100 N. Wilkes-Barre Blvd, Suite 409, Wilkes-Barre, PA 18702  
 TEL: 570-824-2200 FAX: 570-824-0600

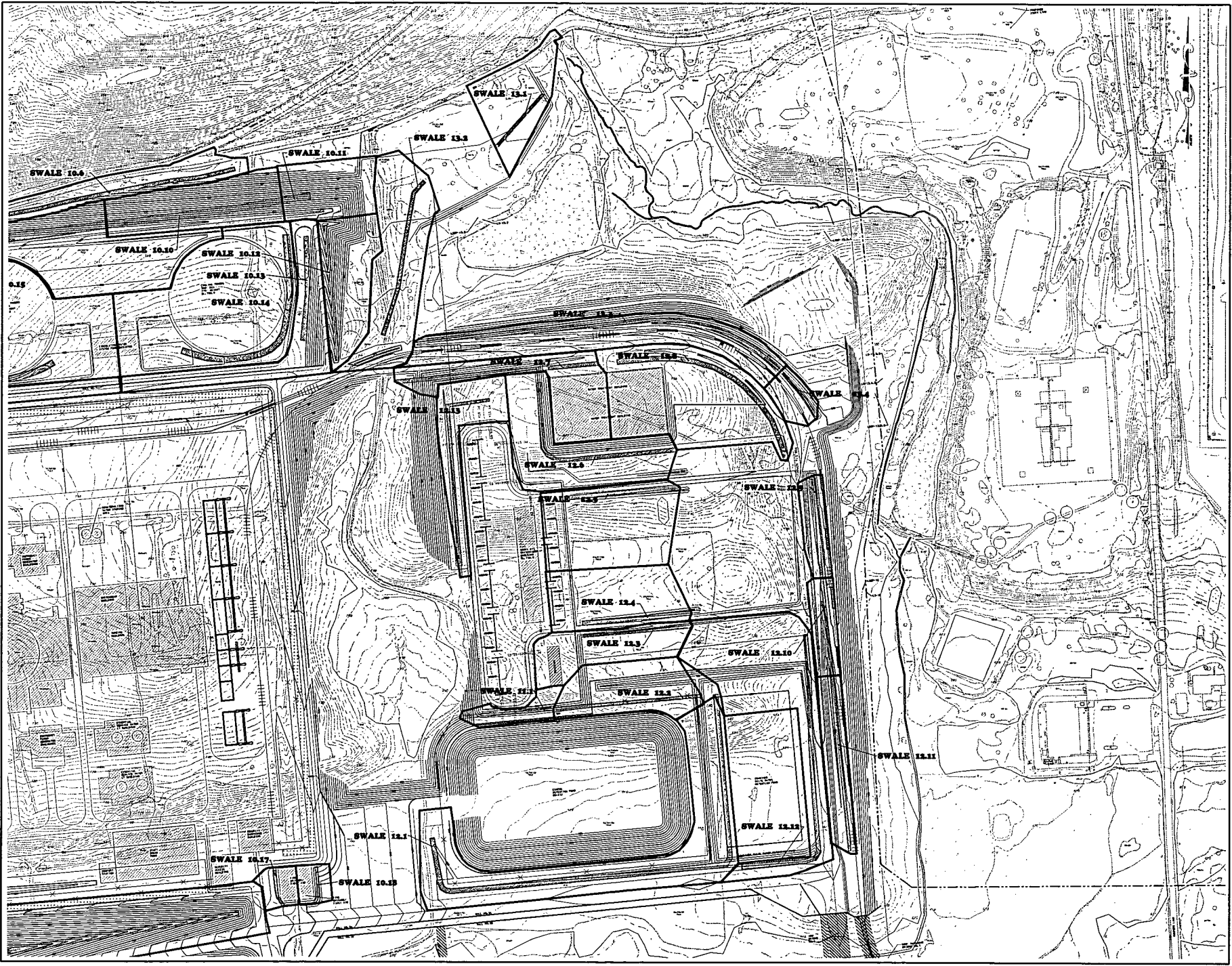
Engineers • Surveyors • Planners • Landscape Architects

SCALE	AS SHOWN	DRAWING NO.	SWL MAP1
DATE	NOV 1988	SHEET	1 OF 2
PROJECT	BELL BEND NUCLEAR POWER PLANT		

**BELL BEND NUCLEAR POWER PLANT**  
 SALES TERRITORY: PENNSYLVANIA  
**SWALE DRAINAGE MAP**  
 PPL BELL BEND, LLC  
 88 HANCOCK LANE  
 BRANDBURG, IN 47620

DATE	NOV 1988	REVISIONS	1/1
NO.	5	DESCRIPTION	





**Pennoni Associates Inc.**

100 N. Wilkes-Barre Blvd, Suite 409, Wilkes-Barre, PA 18702  
 TEL: 570-824-2200 FAX: 570-824-0600

Engineers • Surveyors • Planners • Landscape Architects

**BELL BEND NUCLEAR POWER PLANT**  
 SWALE DRAINAGE MAP

DATE	NO.	DESCRIPTION

SCALE	AS SHOWN
DATE	

PROJECT NO.	
SHEET NO.	

**PPL BELL BEND, LLC**  
 28 HUNTER LANE  
 BELL BEND, PA 18811

**SWL MAP2**

SCALE: 1" = 100'  
 DRAWN BY: [blank]  
 DATE: [blank]  
 CHECKED BY: [blank]  
 APPROVED BY: [blank]

SCALE: 1" = 100'  
 DRAWING NO.: SWL MAP2



ALL INFORMATION IS THE PROPERTY OF PENNONI ASSOCIATES INC. AND IS NOT TO BE REPRODUCED OR TRANSMITTED IN ANY FORM OR BY ANY MEANS, ELECTRONIC OR MECHANICAL, INCLUDING PHOTOCOPYING, RECORDING, OR BY ANY INFORMATION STORAGE AND RETRIEVAL SYSTEM.



**Pennoni Associates Inc.**

100 N. Wilkes-Barre Blvd, Suite 409, Wilkes-Barre, PA 18702  
 TEL: 570-854-2200 FAX: 570-824-0800

Engineers • Surveyors • Planners • Landscape Architects

SCALE	AS SHOWN
DRAWN BY	SWL
CHECKED BY	SWL
DATE	11/15/04
APPROVED BY	SWL

PROJECT	SWL
SHEET	2 OF 2

THIS DRAWING IS THE PROPERTY OF PENNONI ASSOCIATES INC. AND IS NOT TO BE REPRODUCED OR TRANSMITTED IN ANY FORM OR BY ANY MEANS, ELECTRONIC OR MECHANICAL, WITHOUT THE WRITTEN PERMISSION OF PENNONI ASSOCIATES INC.

**BELL BEND NUCLEAR POWER PLANT**

SCALE: 1"=100'-0"

**SWALE DRAINAGE MAP**

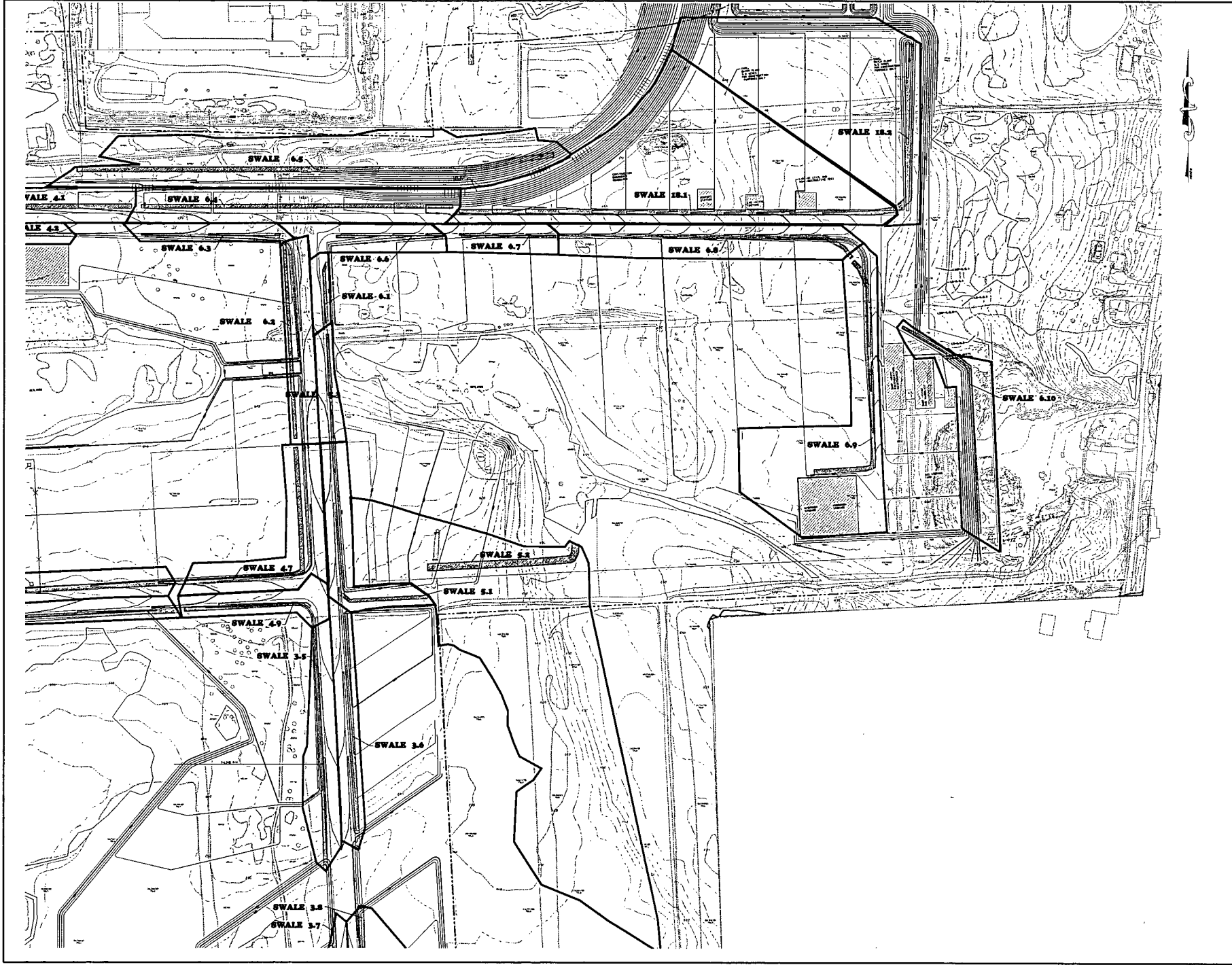
PPL BELL BEND, LLC  
 30 HARBOR LANE  
 BELL BEND, PA 18801

ALL DIMENSIONS ARE IN FEET UNLESS OTHERWISE SPECIFIED.  
 UNLESS OTHERWISE SPECIFIED, ALL DIMENSIONS ARE TO FACE UNLESS OTHERWISE SPECIFIED.

DATE	11/15/04
SCALE	AS SHOWN
PROJECT	SWL
SHEET	2 OF 2



SWL  
MAP3



**Pennoni Associates Inc.**

100 N. Wilkes-Barre Blvd, Suite 400, Wilkes-Barre, PA 18702  
 TEL: 570-424-2200 FAX: 570-624-0800

Engineers • Surveyors • Planners • Landscape Architects

**BELL BEND NUCLEAR POWER PLANT**  
 SALIDA TOWNSHIP, PENNSYLVANIA

**SWALE DRAINAGE MAP**  
 PPL BELL BEND, LLC  
 20 HENRIETY LANE  
 BETHLEHEM, PA 18020

SCALE	1" = 100'	DRAWING NO.	SWL MAP4
DRAWN BY	WCH		
CHECKED BY	WJG		
DATE	11/20/00		
APPROVED			
BY			


ALL DIMENSIONS UNLESS OTHERWISE SPECIFIED ARE IN FEET AND DECIMALS THEREOF.	
DATE	NOV 20 2000
NO.	00000000000000000000
ISSUES	0
BY	WCH
DATE	11/20/00

PENNONI ASSOCIATES INC. CONSULTING ENGINEERS	





**Pennoni Associates Inc.**

100 N. Wilkes-Barre Blvd, Suite 409, Wilkes-Barre, PA 18702

Engineers • Surveyors • Planners • Landscape Architects

TEL: 570-824-2200 FAX: 570-824-0800

ALL DIMENSIONS UNLESS OTHERWISE NOTED  
 TO BE CONSIDERED AS APPROXIMATE

**BELL BEND NUCLEAR POWER PLANT**  
 BUCKLE HARBOR, PENNSYLVANIA

**SWALE DRAINAGE MAP**  
 PPL BELL BEND, LLC  
 88 HANCOCK LANE  
 HANCOCK, PA 16730

DATE	BY	REVISED	BY

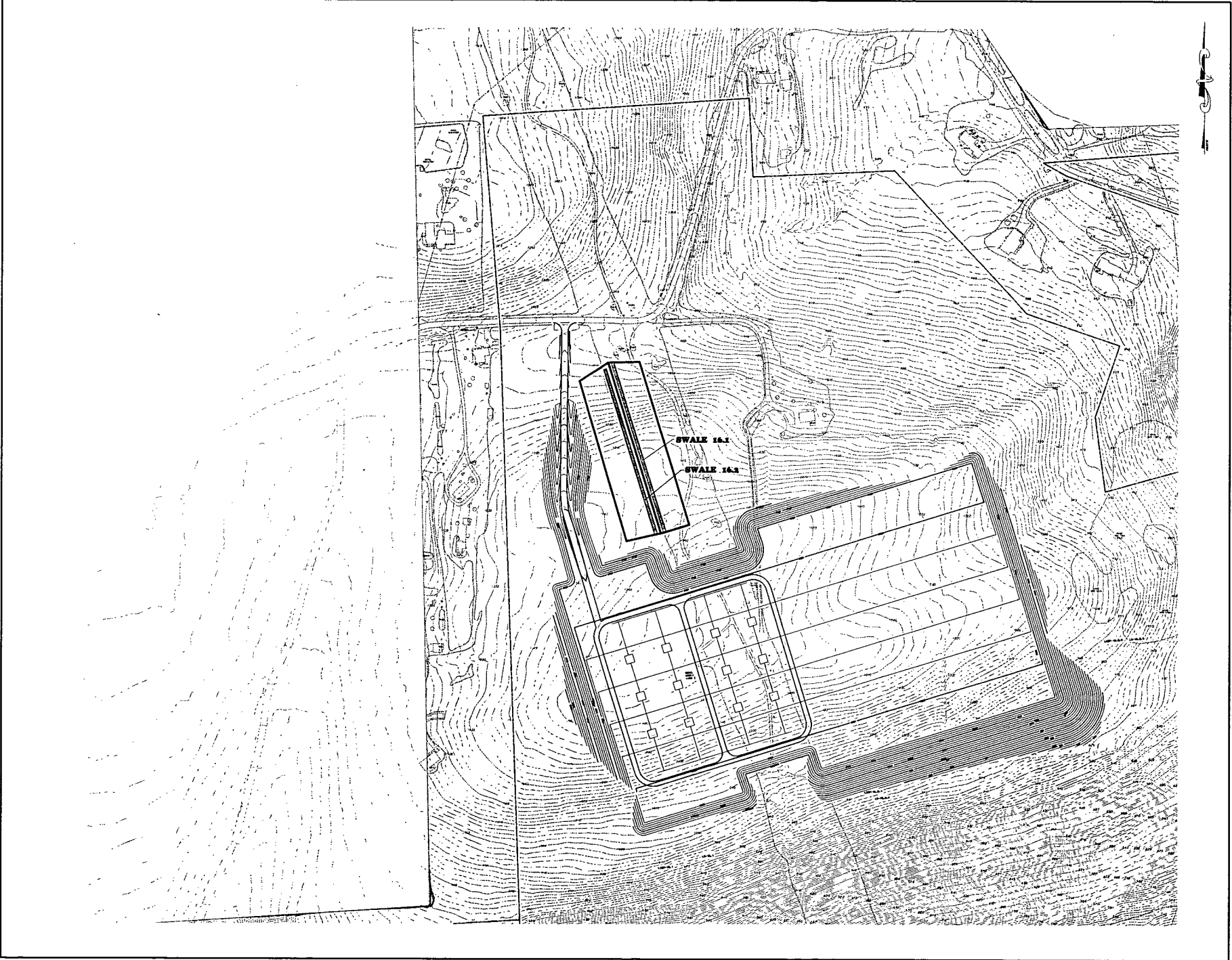
SCALE	PROJECT NO.	DATE	BY

DATE	BY	REVISED	BY

SWL  
MAP5



NO.	DATE	BY



**Pennoni Associates Inc.** 100 N. Wilkes-Barre Blvd, Suite 409, Wilkes-Barre, PA 18702 Engineers • Surveyors • Planners • Landscape Architects



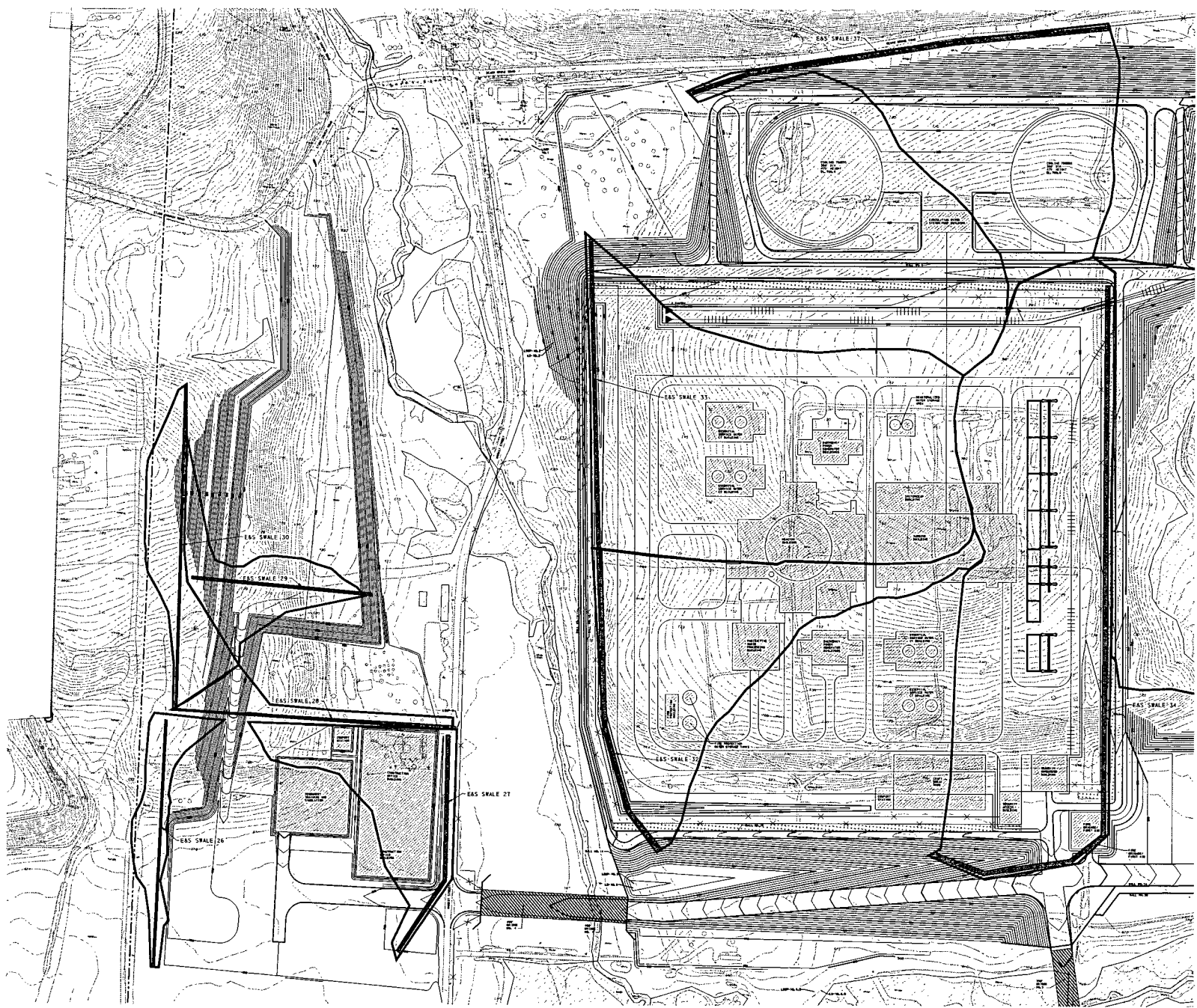
DATE	NO.	REVISION	BY

ALL DIMENSIONS ARE TO BE SHOWN TO THE CENTER OF ANY LINE UNLESS OTHERWISE NOTED.  
PROCEEDINGS OF THE BOARD OF PROFESSIONAL ENGINEERS

**BELL BEND NUCLEAR POWER PLANT**  
SALEM TOWNSHIP, PENNSYLVANIA  
**SWALE DRAINAGE MAP**  
PPL BELL BEND, LLC  
SUITE 100  
BELL BEND, PA 18811


SCALE	PROJECT NO.
1" = 100'	
DRAWN BY	
CHECKED	
APPROVED	

**SWL**  
**MAP6**



**Pennoni Associates Inc.**

100 N. Wilkes-Barre Blvd, Suite 409, Wilkes-Barre, PA 18702  
 TEL: 570-824-2200 FAX: 570-824-0800

Engineers • Surveyors • Planners • Landscape Architects

SCALE  
 P = 1" = 10'  
 DRAWN BY  
 MCK  
 DATE  
 11/20/06  
 APPROVED  
 JPL

NO.	DATE	BY

PROJECT NO.  
 060000000000000000  
 SHEET  
 1 OF 7

**E&S  
 SWL  
 MAP1**

**BELL BEND NUCLEAR POWER PLANT  
 EROSION & SEDIMENTATION SWALE DRAINAGE MAP**

PPL BELL BEND, LLC  
 88 HANCOCK LAKE  
 HANCOCK, PA 16803

DESIGNED BY  
 CHECKED BY  
 DATE  
 11/20/06

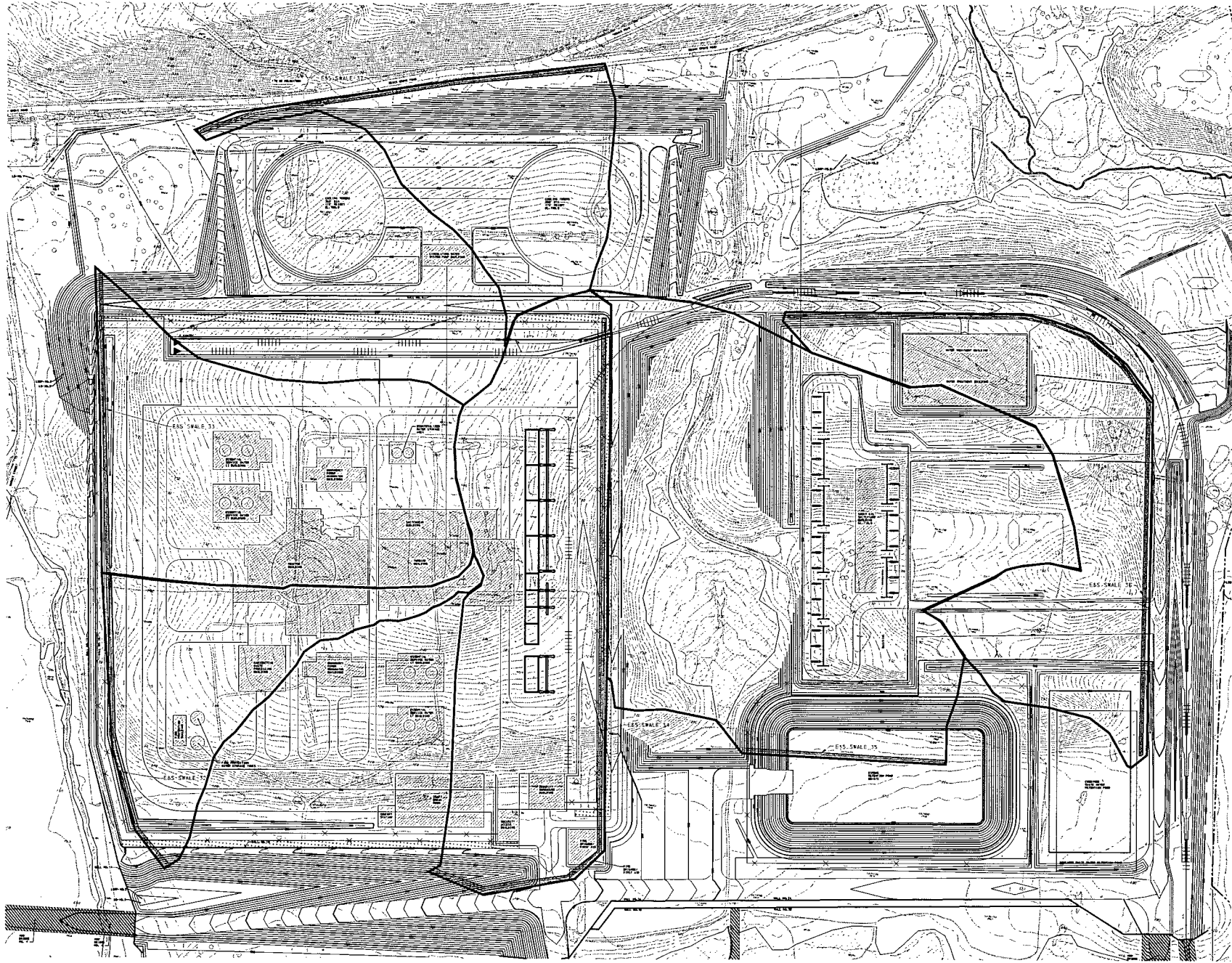
SCALE  
 1" = 10'

PROJECT NO.  
 060000000000000000

SHEET  
 1 OF 7

CONSULTING ENGINEER  
 PENNONI ASSOCIATES INC.  
 CONSULTING ENGINEERS





**Pennoni Associates Inc.**

100 N. Wilkes-Barre Blvd., Suite 409, Wilkes-Barre, PA 18702  
 TEL: 570-824-2200 FAX: 570-824-0600

Engineers • Surveyors • Planners • Landscape Architects

SCALE	1" = 50'	DRAWING NO.	E&S SWL MAP2
DRAWN BY	WES		
DATE	11/13/2008		
APPROVED	JM		

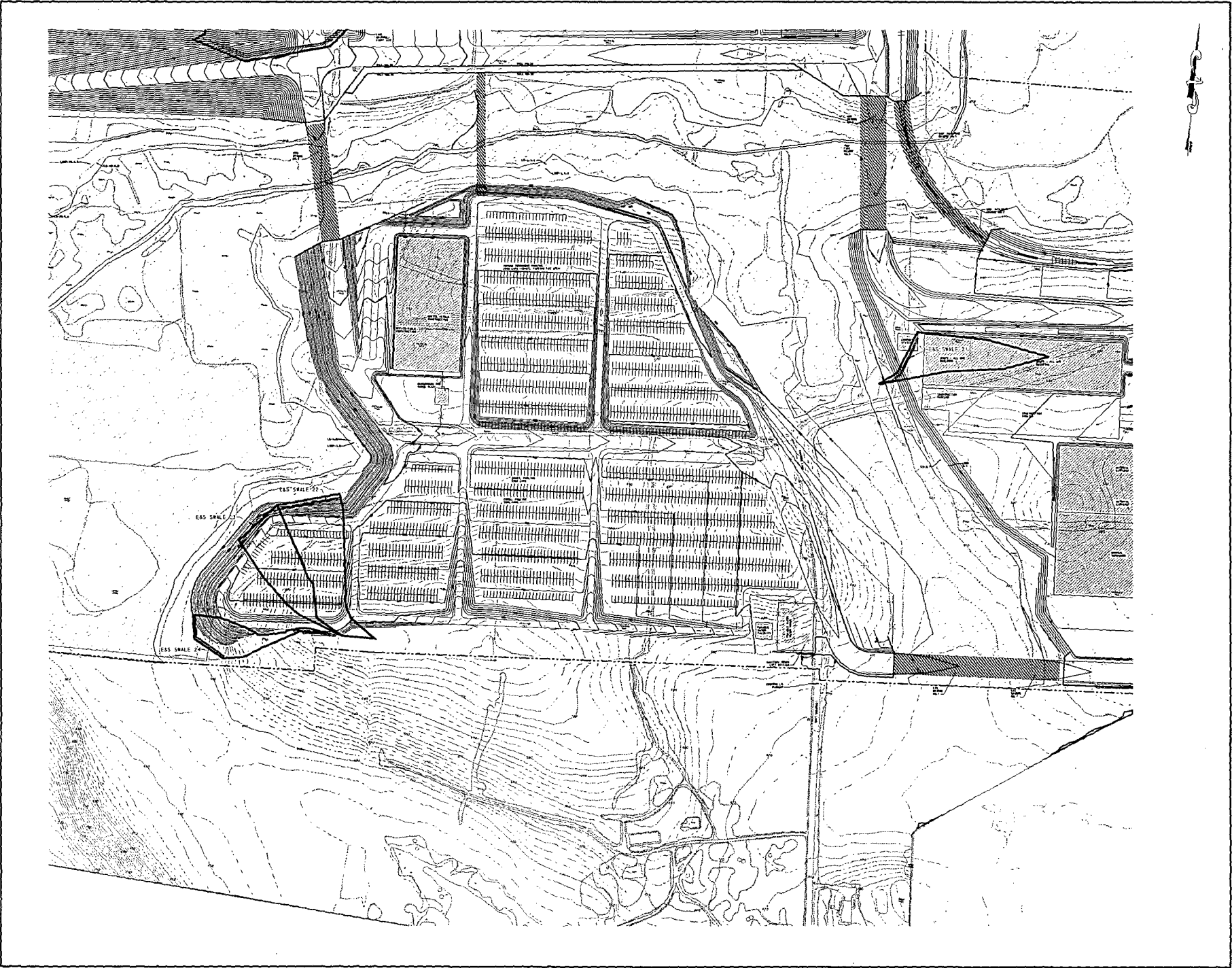

**BELL BEND NUCLEAR POWER PLANT**  
 EROSION & SEDIMENTATION SWALE DRAINAGE MAP  
 PPL BELL BEND, LLC  
 38 HANCOCK AVE  
 BERRYVILLE, PA 16803

CONSTRUCTION SHALL BE PERFORMED BY  
 A LICENSED PROFESSIONAL ENGINEER  
 REGISTERED IN THE STATE OF PENNSYLVANIA

DATE	NO.	DESCRIPTION	BY
	0	ISSUED FOR CONSTRUCTION	JM







**Pennoni Associates Inc.**  
 100 N. Wilkes-Barre Blvd, Suite 408, Wilkes-Barre, PA 18702  
 TEL: 570-824-2800 FAX: 570-824-0800  
 Engineers • Surveyors • Planners • Landscape Architects

**BELL BEND NUCLEAR POWER PLANT**  
 EROSION & SEDIMENTATION SWALE DRAINAGE MAP

**E&S SWL MAP3**

**Pennoni**  
 PENNONI ASSOCIATES INC.  
 CONSULTING ENGINEERS

DATE: 10/20/03  
 DRAWN BY: J. J. [unreadable]  
 CHECKED BY: [unreadable]

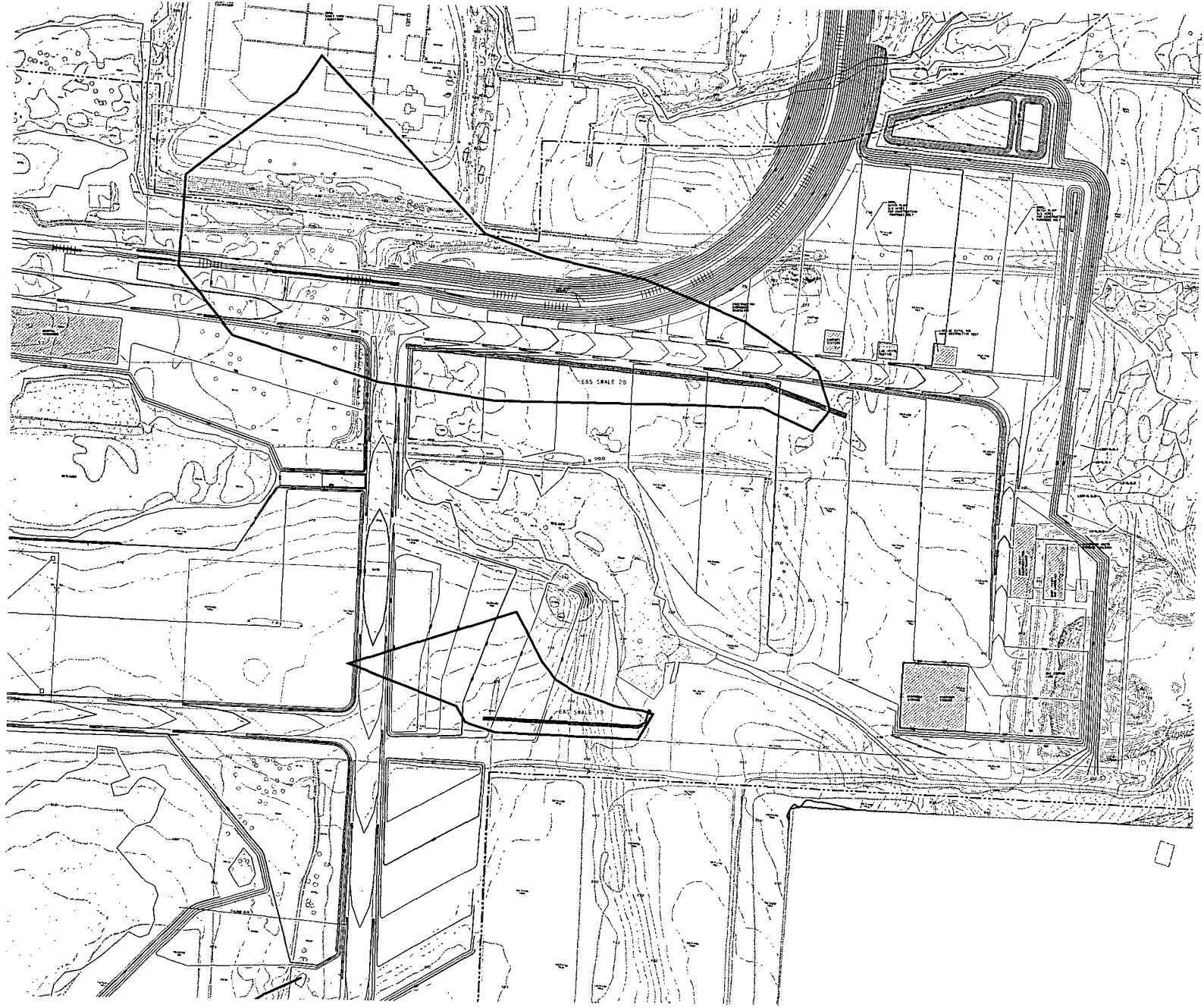
SCALE: 1" = 100'

PROJECT: [unreadable]

DATE: 10/20/03

PROJECT: [unreadable]

DATE: 10/20/03



**Pennoni Associates Inc.**

100 N. Wilkes-Barre Blvd, Suite 409, Wilkes-Barre, PA 18702  
 TEL: 570-824-2200 FAX: 570-824-0600

Engineers • Surveyors • Planners • Landscape Architects



DATE	NO.	REVISED	BY

ALL DIMENSIONS ARE TO BE CONSIDERED AS SHOWN UNLESS OTHERWISE NOTED. THE USER SHALL BE RESPONSIBLE FOR OBTAINING ALL NECESSARY PERMITS AND REGULATORY APPROVALS PRIOR TO CONSTRUCTION OF THE WORK.

**BELL BEND NUCLEAR POWER PLANT**  
 SWALE TOWNSHIP, PENNSYLVANIA  
**EROSION & SEDIMENTATION SWALE DRAINAGE MAP**  
 PPL BELL BEND, LLC  
 1000 BELL BEND LANE  
 BELL BEND, PA 18801

SCALE	1" = 50'
DRAWN BY	WJC
DATE	10/20/09
APPROVED	[Signature]

PROJECT NO.	10000000000000000000
PROJECT NAME	BELL BEND NUCLEAR POWER PLANT
PROJECT LOCATION	SWALE TOWNSHIP, PENNSYLVANIA
PROJECT OWNER	PPL BELL BEND, LLC
PROJECT NO.	10000000000000000000
PROJECT NAME	BELL BEND NUCLEAR POWER PLANT
PROJECT LOCATION	SWALE TOWNSHIP, PENNSYLVANIA
PROJECT OWNER	PPL BELL BEND, LLC

**E&S  
 SWL  
 MAP4**



**Pennoni Associates Inc.**

100 N. Wilkes-Barre Blvd., Suite 408, Wilkes-Barre, PA 18702  
TEL. 570-824-2200 FAX 570-824-0800

Engineers • Surveyors • Planners • Landscape Architects

SCALE	AS SHOWN	GRAPHIC SCALE
DRAWN BY	WJ	PLANNED
CHECKED BY	WJ	PERMIT
DATE	10/20/95	1 OF 7
PROJECT		
NO.		

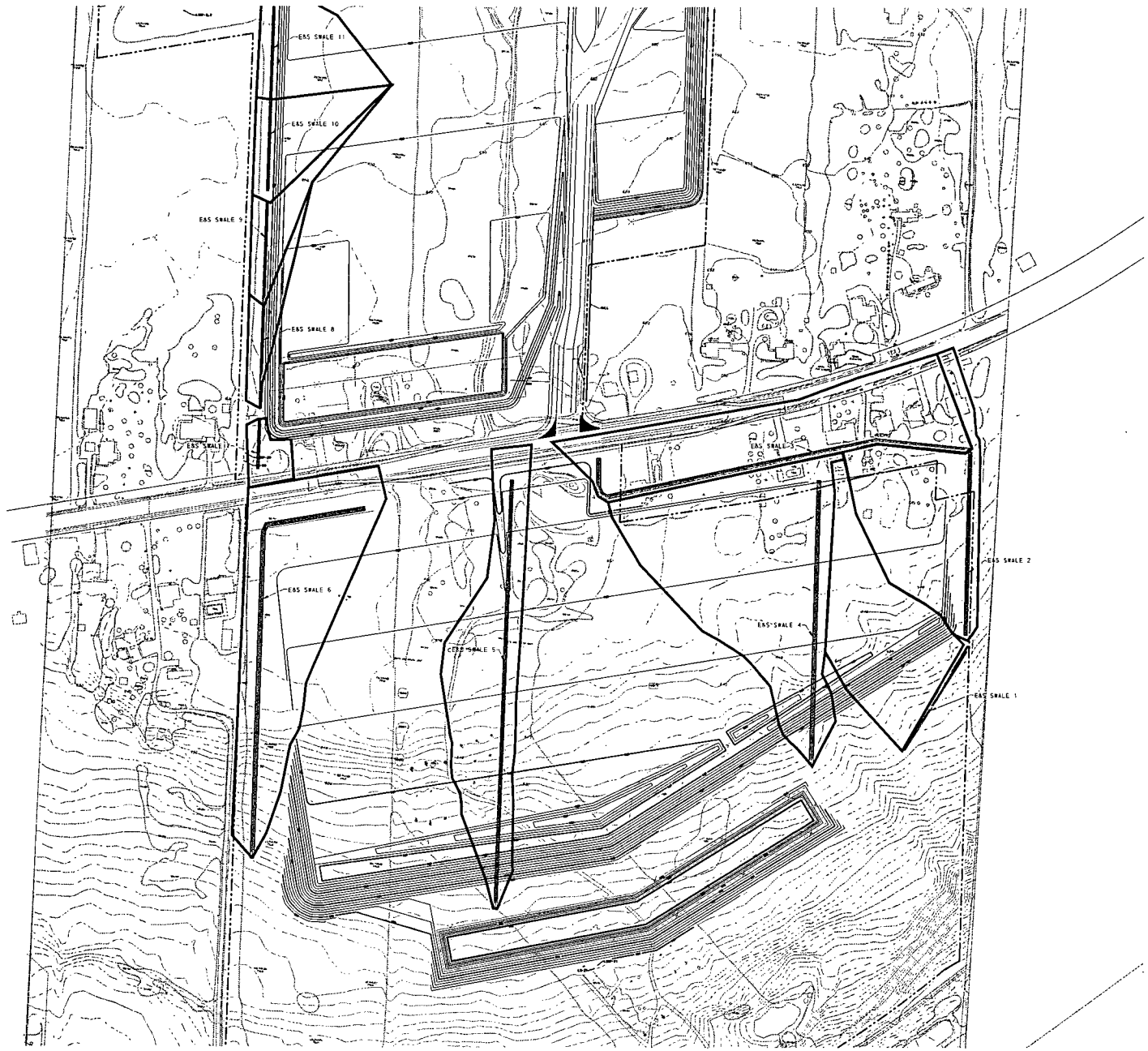
DATE	NO.	NO.	BY
10/20/95	0	000000000000000000	WJ
		REVISED	

**E&S SWL MAP5**

**BELL BEND NUCLEAR POWER PLANT**  
SALEM TOWNSHIP, PENNSYLVANIA  
**EROSION & SEDIMENTATION SWALE DRAINAGE MAP**  
PPL BELL BEND, LLC  
28 SOUTH LANE  
BETHLEHEM, PA 18020

THIS MAP WAS PREPARED BY PENNONI ASSOCIATES INC. FOR THE USE OF THE CLIENT. PENNONI ASSOCIATES INC. ACCEPTS NO LIABILITY FOR ANY ERRORS OR OMISSIONS. THE CLIENT IS RESPONSIBLE FOR THE ACCURACY OF THE DATA PROVIDED AND FOR THE PROTECTION OF THE WORK.





**Pennoni Associates Inc.**

100 N. Wilkes-Barre Blvd, Suite 409, Wilkes-Barre, PA 18702  
 TEL: 570-824-2200 FAX: 570-824-0800  
 Engineers • Surveyors • Planners • Landscape Architects

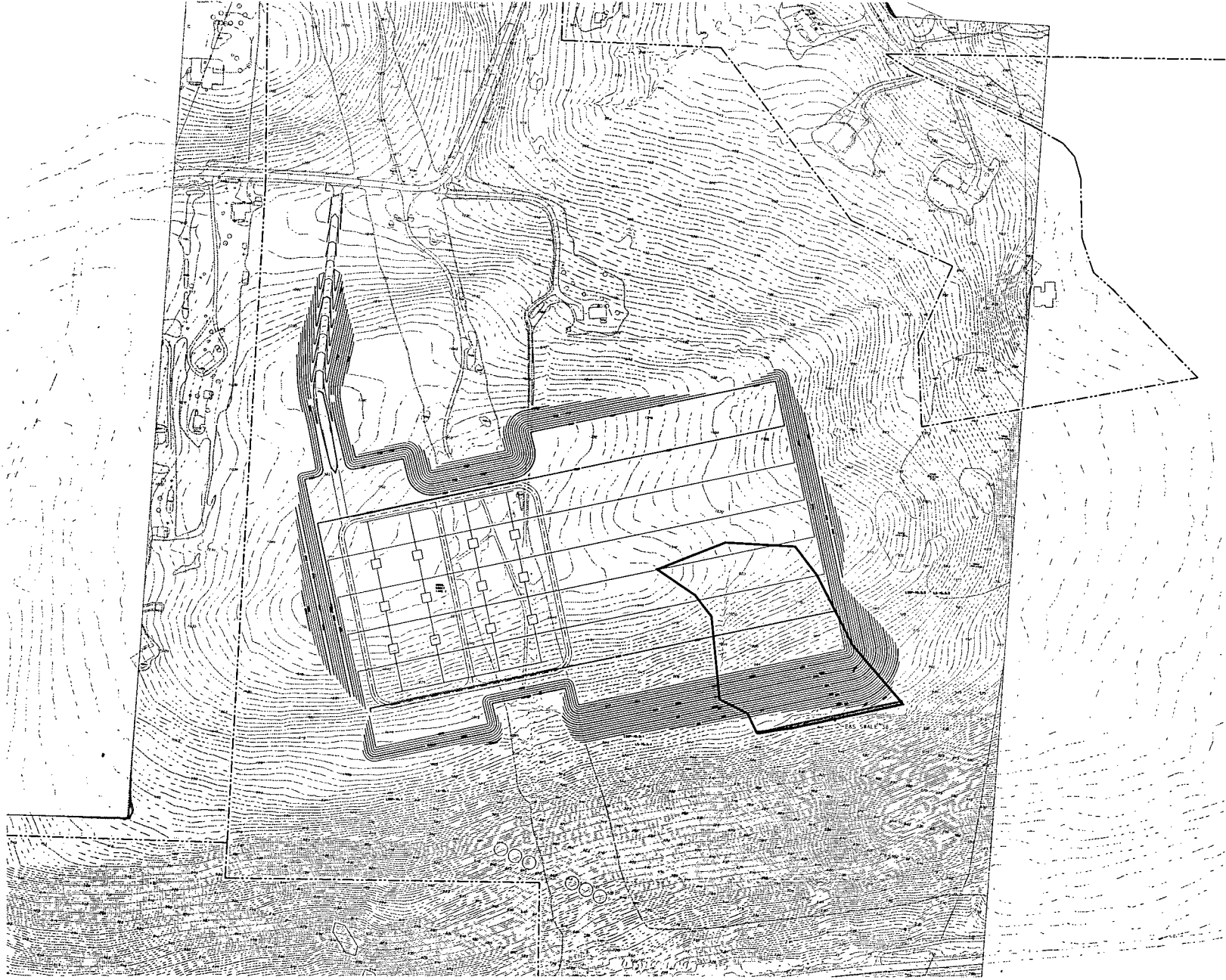
SCALE	1" = 50'	DRAWN BY	WCL	DATE	11/19/08	PROJECT	SWL MAPS
SHEET		E & S		2 OF 7		DRAWING NO.	
PPL		WCL		11/19/08		E&S SWL MAPS	

**BELL BEND NUCLEAR POWER PLANT**  
 EROSION & SEDIMENTATION SWALE DRAINAGE MAP  
 PPL BELL BEND, LLC  
 28 BURNETT LANE  
 BELL BEND, PA 18801

CONSULTATION AND DESIGN BY  
 PENNONI ASSOCIATES INC.  
 100 N. WILKES-BARRE BLVD., SUITE 409  
 WILKES-BARRE, PA 18702

DATE	11/19/08	SCALE	1" = 50'	PROJECT	SWL MAPS
DRAWN BY	WCL	DATE	11/19/08	PROJECT	SWL MAPS





**Pennoni Associates Inc.**

100 N. Wilkes-Barre Blvd., Suite 409, Wilkes-Barre, PA 18702  
 TEL: 570-824-2200 FAX: 570-824-0800  
 Engineers • Surveyors • Planners • Landscape Architects

SCALE  
 1" = 50'  
 DRAWN BY  
 JEM  
 DATE  
 11/20/78  
 APPROVED  
 JEM

PPL 2000  
 8427  
 2 OF 7

**E&S  
 SWL  
 MAP7**

**BELL BEND NUCLEAR POWER PLANT**  
 SALUDA TOWNSHIP, PENNSYLVANIA  
**EROSION & SEDIMENTATION SWALE DRAINAGE MAP**  
 PPL BELL BEND, LLC  
 30 HARMONY LAKE  
 BETHLEHEM, PA 18020

CONSULTATION AND DESIGN SERVICES BY  
 PENNONI ASSOCIATES INC. FOR THE PROJECT  
 NOT TO BE USED WITHOUT THE CLIENT

NO. 0	DATE	NO.	BY
00000000000000000000			

