

## SECTION 2

### ASSIGNMENT OF RESPONSIBILITY

#### 1.0 PSEG Nuclear LLC

#### 1.1 Internal Responsibility

PSEG Nuclear LLC, operator of Salem and Hope Creek Generating Stations, has the primary responsibility for planning and implementing emergency measures within the site boundary. In addition to accident mitigation, this responsibility includes accident assessment and the evaluation of any real or potential risk to the public health and safety. Based upon this evaluation, appropriate offsite agencies are promptly notified of the Protective Action Recommendations (PAR) for the affected population areas.

The Manager - Emergency Preparedness (Manager EP) is the individual who is responsible for maintaining emergency preparedness for PSEG Nuclear LLC. The Manager EP reports to the Director - Regulatory Affairs, who reports to the President and Chief Nuclear Officer. Organization charts showing reporting relationships for emergency preparedness within both the corporate structure and PSEG Nuclear LLC are presented in Figures 2-1 and 2-2.

Throughout the duration of an emergency, accident mitigation is the responsibility of the Shift Manager (SM). The Technical Support Center (TSC) staff under the direction of the Emergency Duty Officer (EDO) supplies support. Protective Action Recommendations are made from the TSC following its activation. Additional support is available from the Emergency Operations Facility (EOF), which is staffed and may be activated for Alerts and always activate at a Site Area Emergency. Protective Action Recommendations are made from the EOF following its activation.

The Emergency Response Organization at each level of response is described in Section 3. Each emergency manager/supervisor is responsible for maintaining and ensuring the continuity of personnel and resources.

#### 1.2 External Agreements

PSEG Nuclear has entered into agreements with the appropriate emergency response organizations which would provide onsite and offsite support in the event of an emergency at Hope Creek or Salem Generating Stations. These agreements are provided in the Emergency Plan Attachment Book, Attachment 3. Figures 2-3 and 2-4 show how these organizations interface with PSEG Nuclear. Figure 2-5 show how these organizations interface for protective action decision making.

## 2.0 Principal Government Jurisdictions in the EPZs

### 2.1 The State of Delaware

The Delaware Emergency Management Agency (DEMA), Department of Public Safety, has developed the Delaware Radiological Emergency Preparedness (REP) Plan and serves as the lead agency for coordinating state emergency actions as authorized in the Delaware Code Annotated Title 20, Chapter 31.

The Delaware Department of Natural Resources and Environmental Control (DNREC), as authorized by the Delaware Code Annotated Title 7, Chapter 60 is responsible for protecting the environment to include participation in accident assessment, mitigation and recovery efforts in the event of a radiological incident.

The Delaware Department of Health and Social Services (DHSS), as authorized by the Delaware Code Annotated, Title 16, Chapter 1, has the overall responsibility for protecting health and safety of the general public to include accident assessment, social services mitigation and recovery efforts in the event of radiological incident.

The Delaware Department of Agriculture (DDA), as authorized by the Delaware Code Annotated Title 29, Chapter 81, is responsible for protection of agriculture in the interest of health and safety of the public.

The Technical Assessment Center (TAC) develops Delaware's accident assessment and protective action response. The TAC comprises members of the DNREC, DHSS with the Deputy Director of the Division of Public Health (DPH) and Division of Water Resources (DWR) Senior Science Advisor serving as the Co-Chairperson of the TAC. Protective Action Recommendations are developed and provided to the DEMA Director, by the TAC Chairperson.

The resources and response organization of the State of Delaware are described in the Delaware Radiological Emergency Plan. The response organization for the State of Delaware is provided as Figure 2-6. The development of protective actions is performed as outlined in Figure 2 - 5 and discussed in detail in Sections 10 and 11 of this plan.

### 2.2 The State of New Jersey

The Office of Emergency Management (OEM) of New Jersey State Police (NJSP) is granted the authority to assist in supervising and coordinating the emergency response activities of the state government and of all of the political subdivisions as outlined in the New Jersey Civil Defense Act of 1942, Chapter 251, as amended.

The New Jersey Department of Environmental Protection (DEP) is empowered by NJ Radiation Accident Response Act (N.J.S.A. 26:2D-37 et.seq.), to take/recommend radiological protective actions as necessary to protect the public health or welfare.

The Superintendent of NJSP is the agency head that acts as New Jersey's emergency coordinator responsible for directing and/or coordinating all emergency response by New Jersey state agencies. The response organization for the State of New Jersey is provided as Figure 2-7.

The New Jersey Department of Environmental Protection is the lead agency for New Jersey's assessment of radiological emergencies. The Commissioner of the DEP is the agency head responsible for the response of that organization. The actions taken by DEP are coordinated through and parallel with the actions of the NJSP.

The resources and response organizations of the State of New Jersey are described in the New Jersey Radiological Emergency Response Plan. The development of protective actions is performed as outlined in Figure 2-5 and is discussed in detail in Sections 10 and 11.

### 2.2.1 Local Governments

The County Emergency Management Coordinators for Salem and Cumberland Counties in New Jersey and the County Emergency Preparedness Coordinators for New Castle and Kent Counties in Delaware are the local government representatives who act as the county emergency coordinators. The response organizations for the counties are provided in Figures 2-8 through 2-11.

### 3.0 Contiguous (Ingestion Pathway) States

The States of Pennsylvania and Maryland are contiguous (Ingestion pathway) states. The ingestion exposure pathway planning area is shown in Emergency Plan Section 1, Figure 1-1. The State of New Jersey has taken the primary responsibility for notification and communications with the contiguous (ingestion pathway) States of Pennsylvania and Maryland.

The Memoranda of Understanding between the State of New Jersey and the States of Pennsylvania and Maryland are available for review and located in the Emergency Plan attachment volume. Should the accident cause conditions offsite that justify monitoring of the ingestion pathway, the utility's emergency coordinator function verifies with the States of New Jersey and Delaware that the ingestion pathway is being monitored. Additionally, the individual acting in the emergency coordinator function verifies with the State of New Jersey that the States of Pennsylvania and Maryland have been notified. The State of Delaware also has agreements in force with the States of Maryland and Pennsylvania regarding emergency notifications. The criteria for recommending ingestion pathway monitoring is that radionuclide concentrations in excess of 10CFR20 Appendix B limits could potentially exist or are verified to exist offsite.

FIGURE 2-1  
PSEG CORPORATE ORGANIZATION

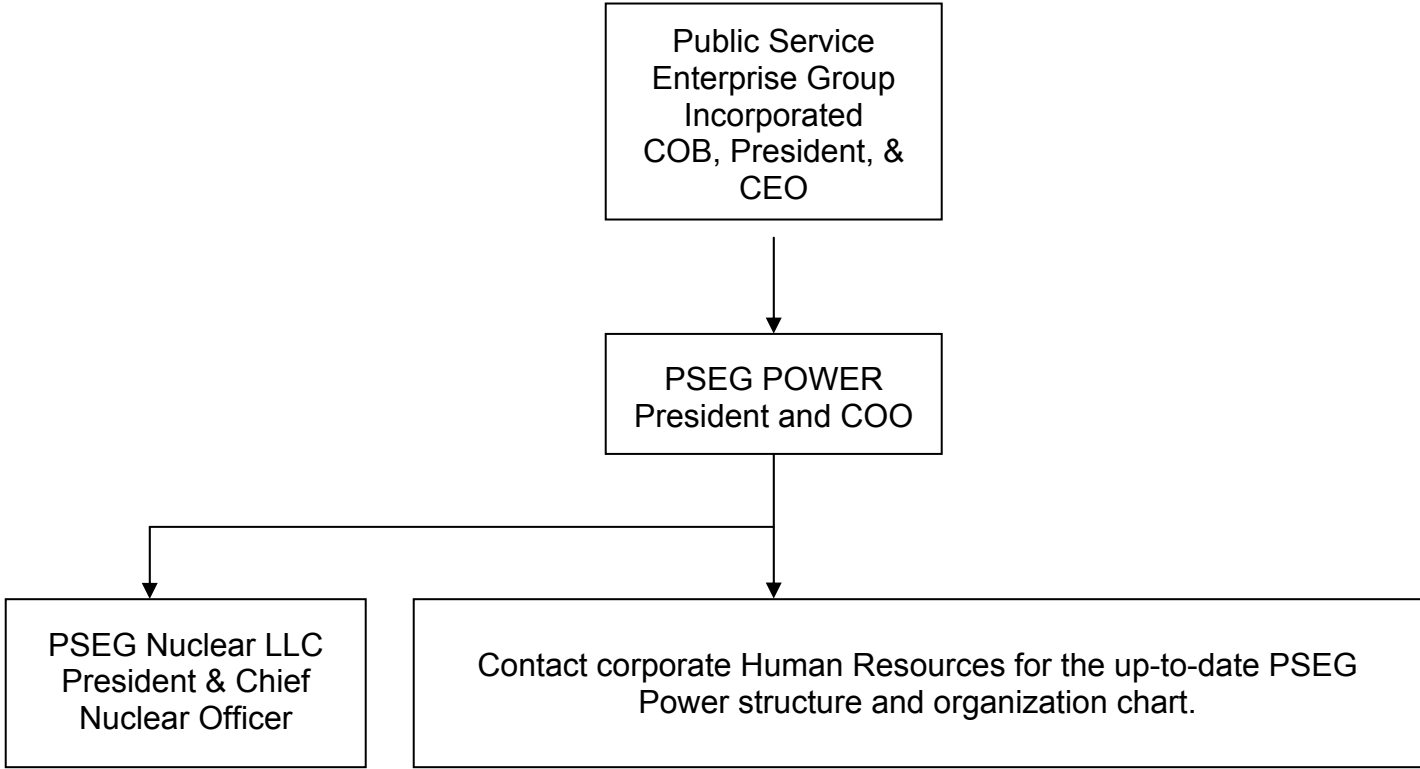


FIGURE 2-2  
PSEG NUCLEAR ORGANIZATION

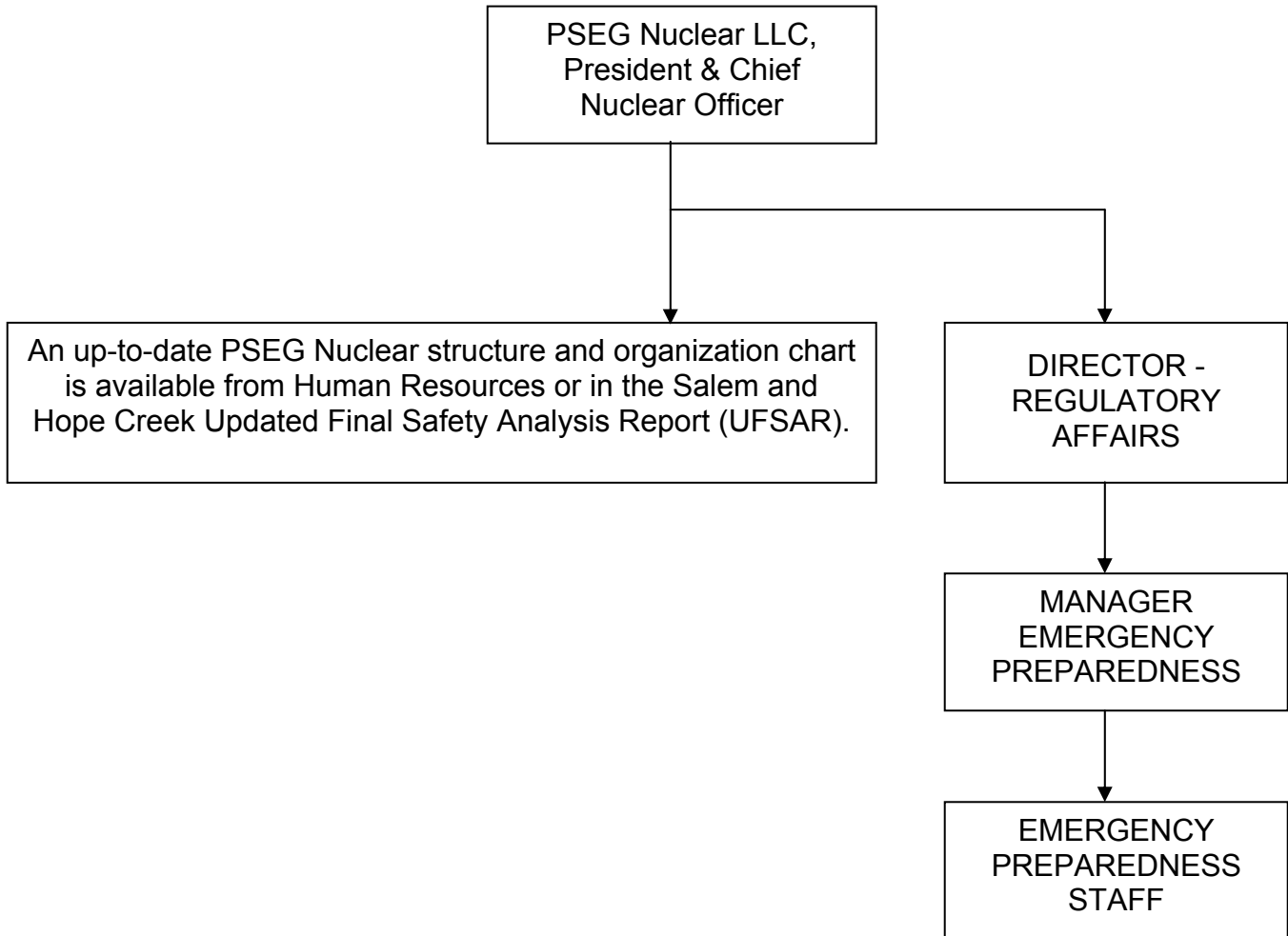
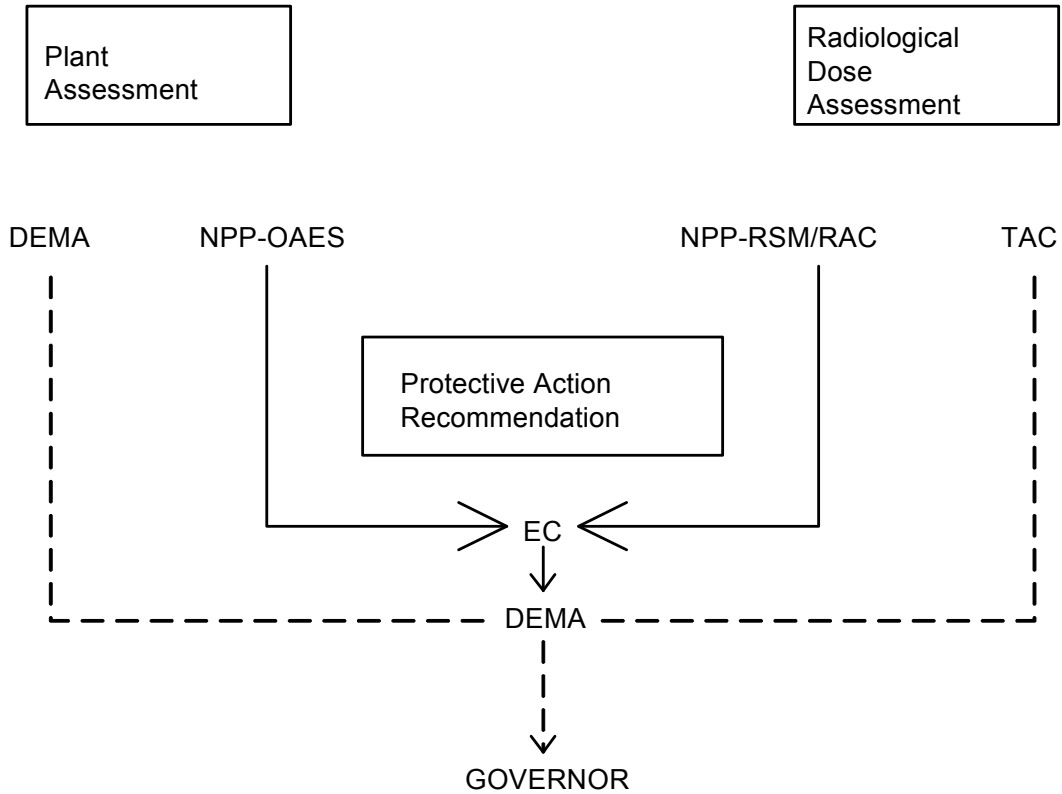


FIGURE 2-3  
DELAWARE STATE INTERFACE

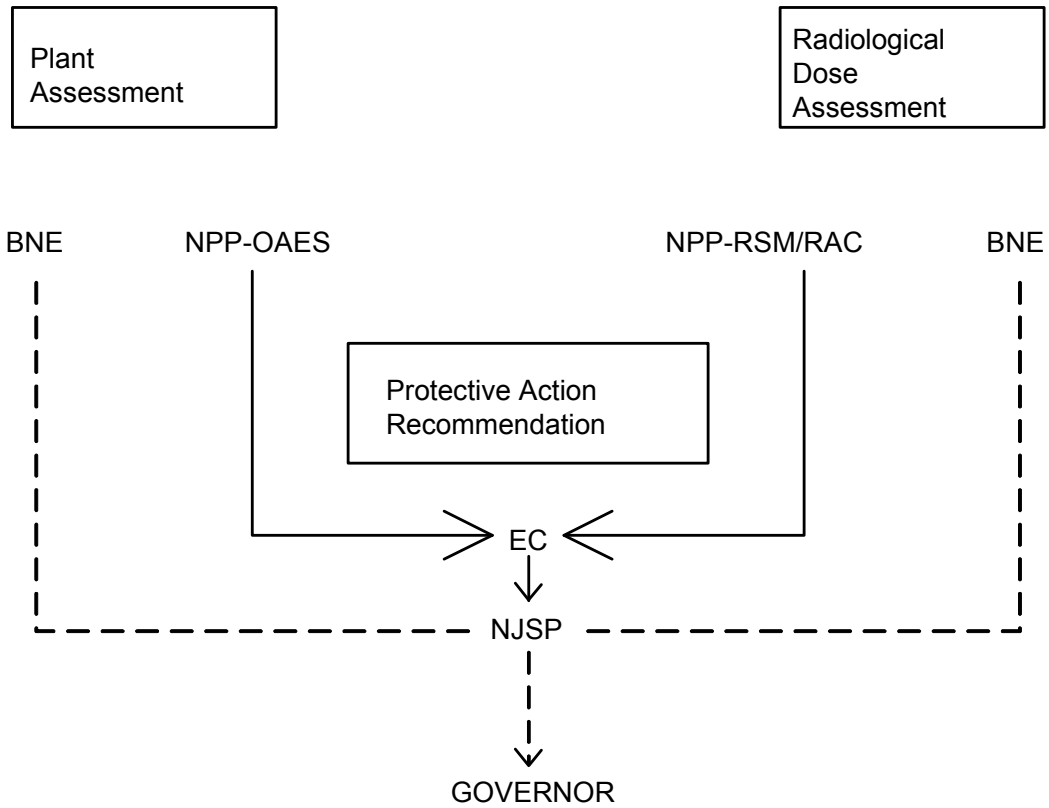


Key to Abbreviations/Symbols

----- state communication  
 \_\_\_\_\_ utility communication

- EC Emergency Coordinator (Sift Manager, Emergency Duty Officer, Emergency Response Manager)
- NPP Nuclear Power Plant (Fixed Nuclear Facility)
- RAC Radiological Assessment Coordinator
- RSM Radiological Support Manager
- OAES Operations Assessment and Engineering Staff
- TAC TECHNICAL ASSESSMENT CENTER, State of Delaware
- DEMA Delaware Emergency Management Agency, State of Delaware

FIGURE 2-4  
NEW JERSEY STATE INTERFACE

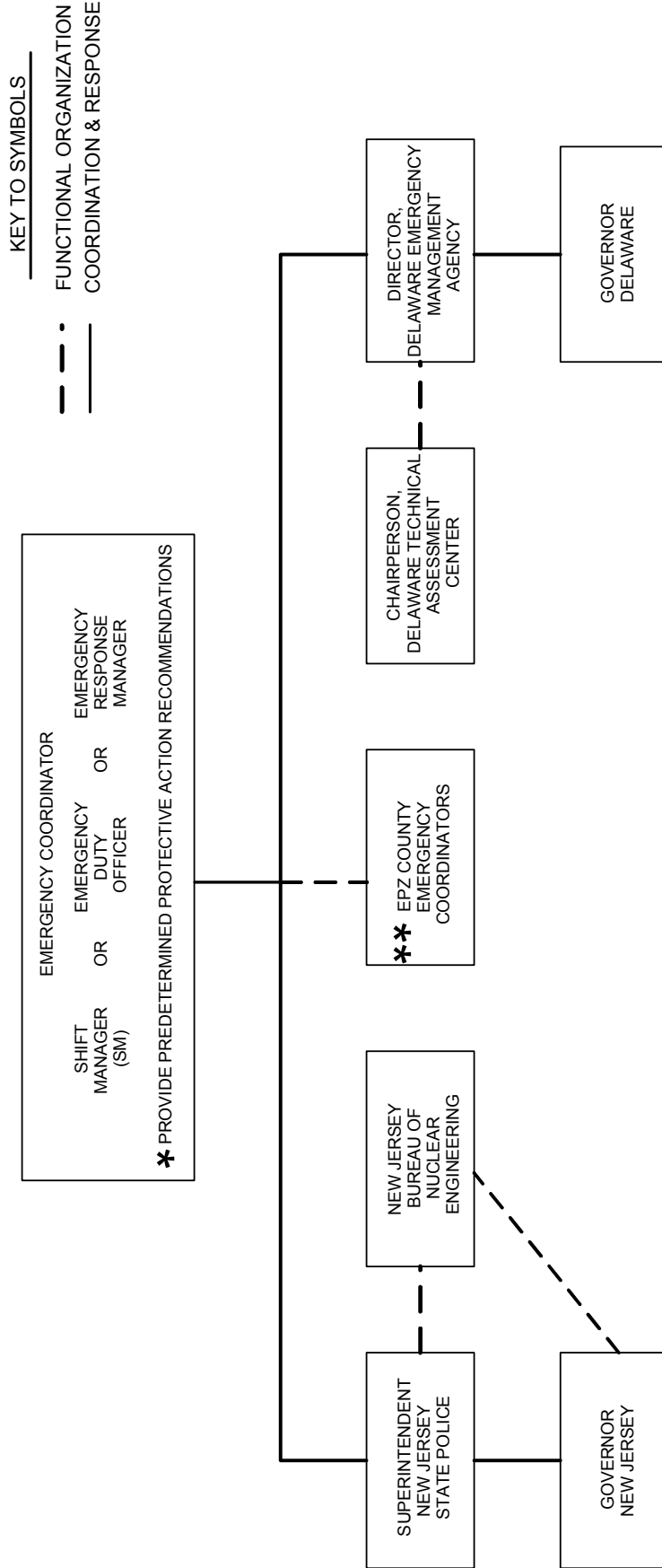


Key to Abbreviations/Symbols

----- state communication  
 \_\_\_\_\_ utility communication

- EC Emergency Coordinator (Shift Manager, Emergency Duty Officer, Emergency Response Manager)
- NPP Nuclear Power Plant (Fixed Nuclear Facility)
- RAC Radiological Assessment Coordinator
- RSM Radiological Support Manager
- OAES Operations Assessment and Engineering Staff
- BNE New Jersey Bureau of Nuclear Engineering, Department of Environmental Protection
- NJSP New Jersey State Police

FIGURE 2-5  
 DECISION CHAIN  
 PROTECTIVE ACTIONS  
 FOR  
 EVENTS CLASSIFIED AS GENERAL EMERGENCY



\* PREDETERMINED PROTECTIVE ACTION RECOMMENDATIONS ARE DEVELOPED IN ACCORDANCE WITH IE INFORMATION NOTICE 83-28 AND NUREG - 0654, REV. 1. RELEASE ASSESSMENT WILL THEN BE PERFORMED TO ENSURE APPROPRIATE PROTECTIVE ACTIONS HAVE BEEN DEVELOPED.

\*\* COUNTY EMERGENCY COORDINATORS ARE SHOWN HERE BECAUSE THEY ARE NOTIFIED DIRECTLY IF THE STATE(S) CANNOT BE CONTACTED AT A GENERAL EMERGENCY.



FIGURE 2-6  
 STATE OF DELAWARE  
 RADIOLOGICAL EMERGENCY RESPONSE  
 STATE ORGANIZATION

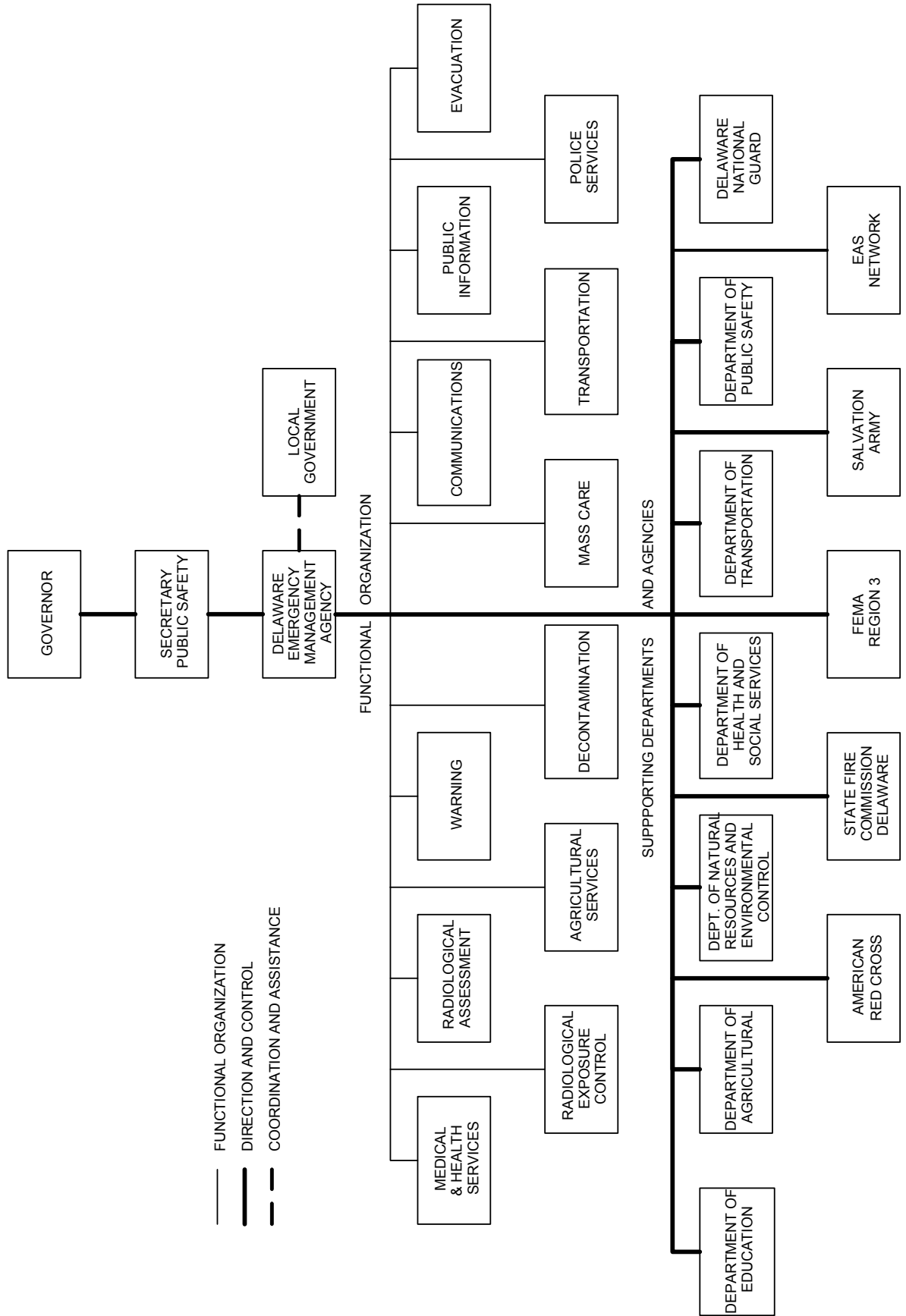


FIGURE 2-7  
 STATE OF NEW JERSEY  
 RADIOLOGICAL EMERGENCY RESPONSE  
 STATE ORGANIZATION

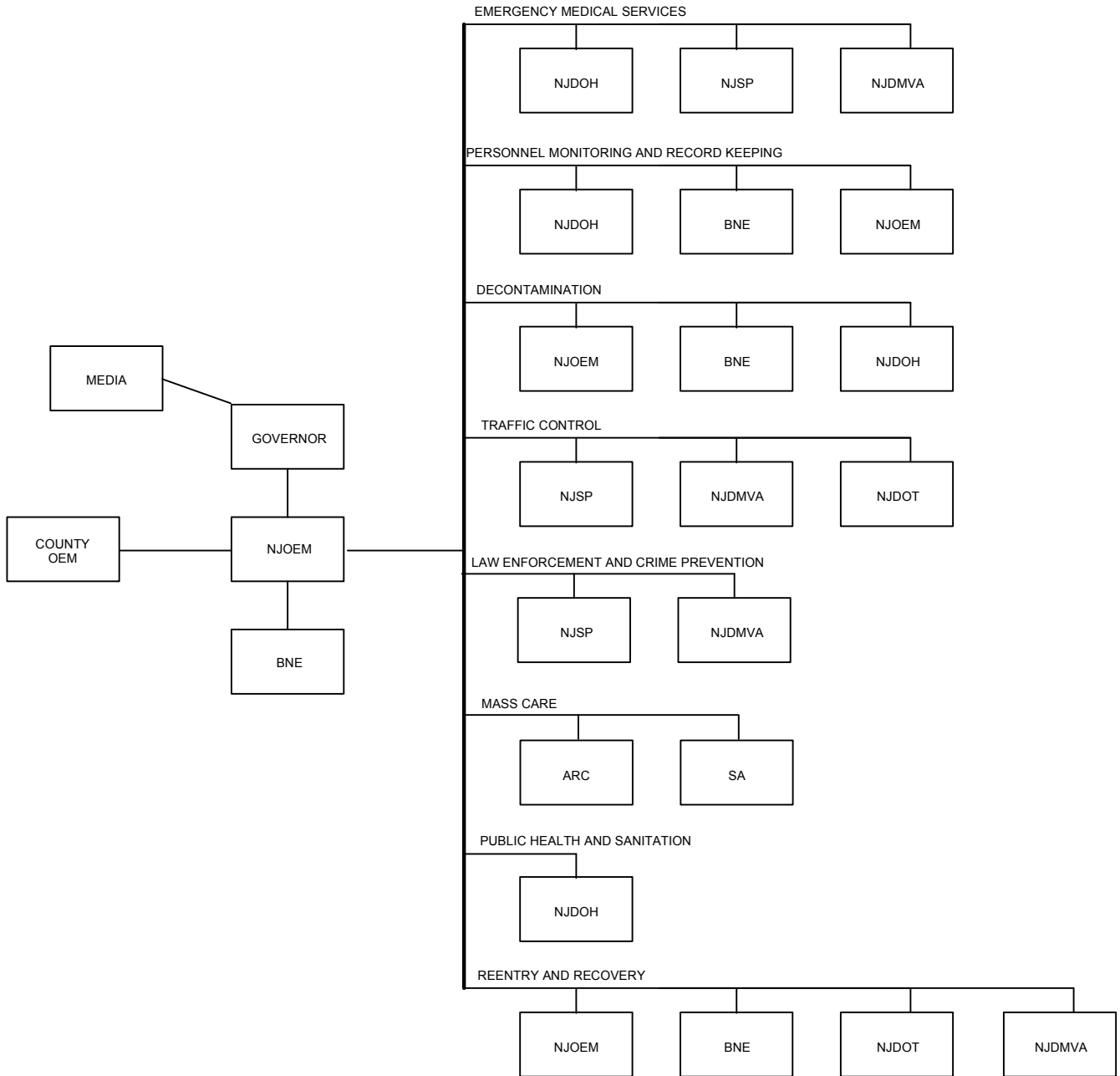


FIGURE 2-8  
SALEM COUNTY  
COUNTY EMERGENCY ORGANIZATION

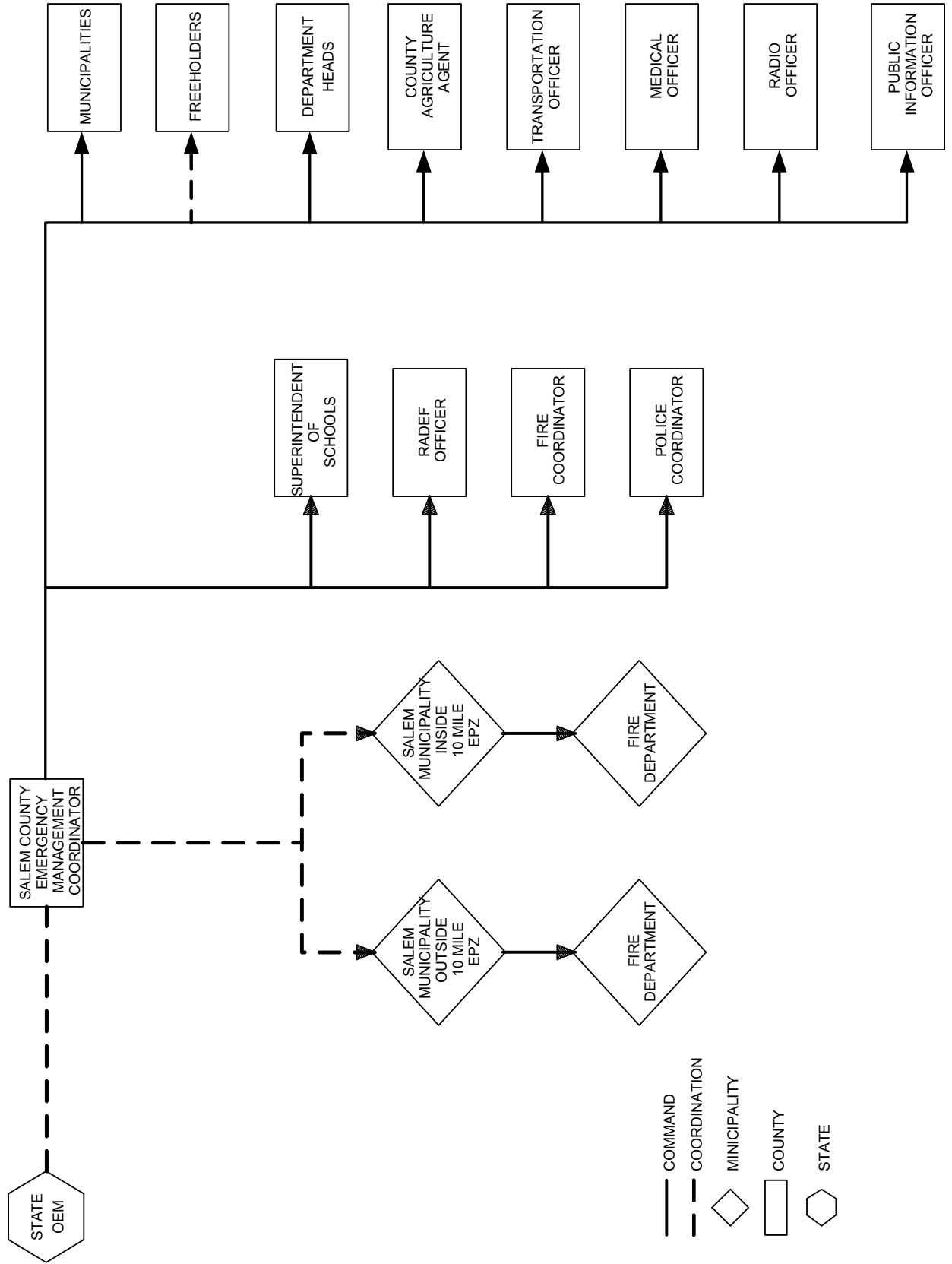


FIGURE 2-9  
CUMBERLAND COUNTY  
COUNTY EMERGENCY ORGANIZATION

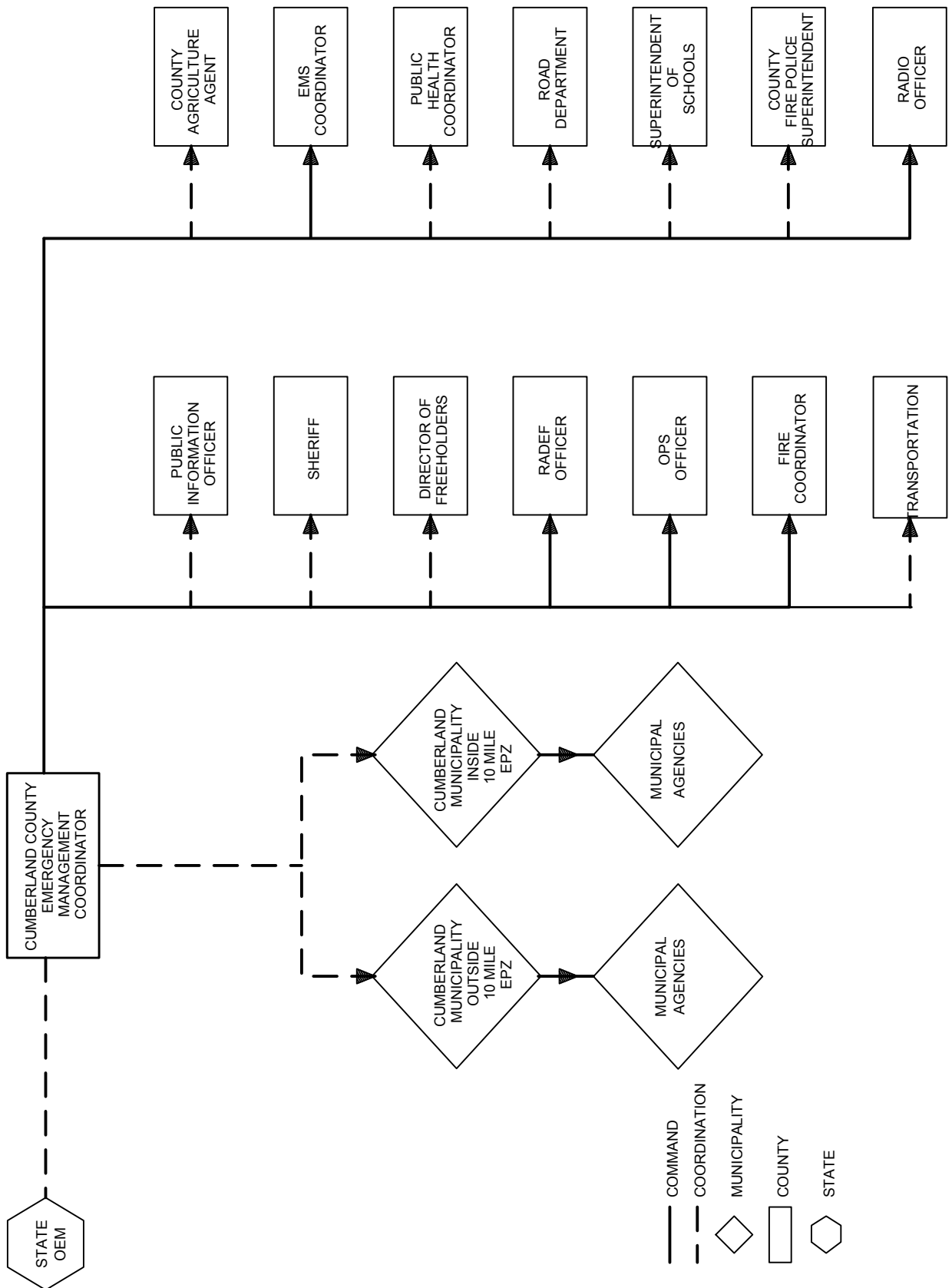
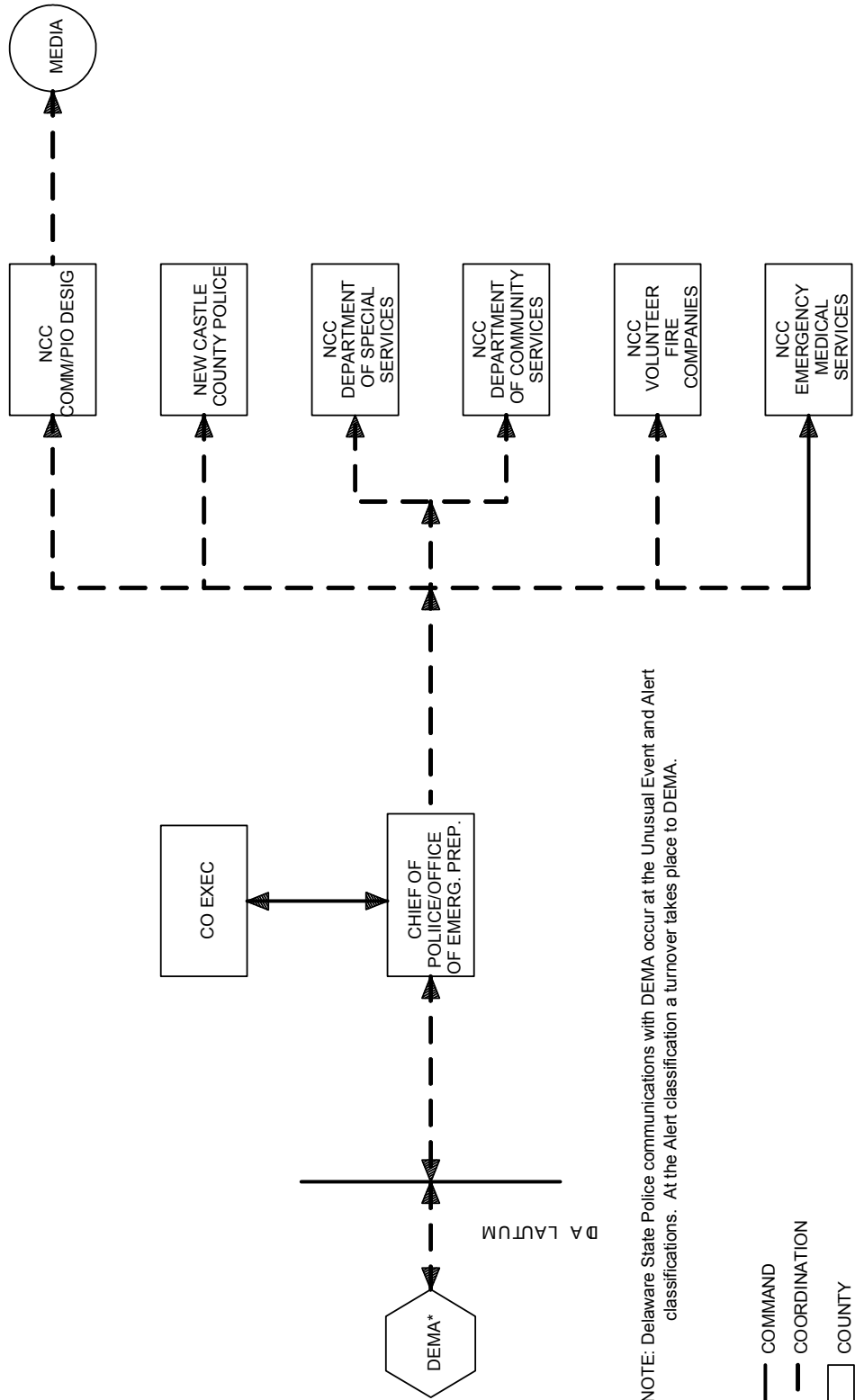


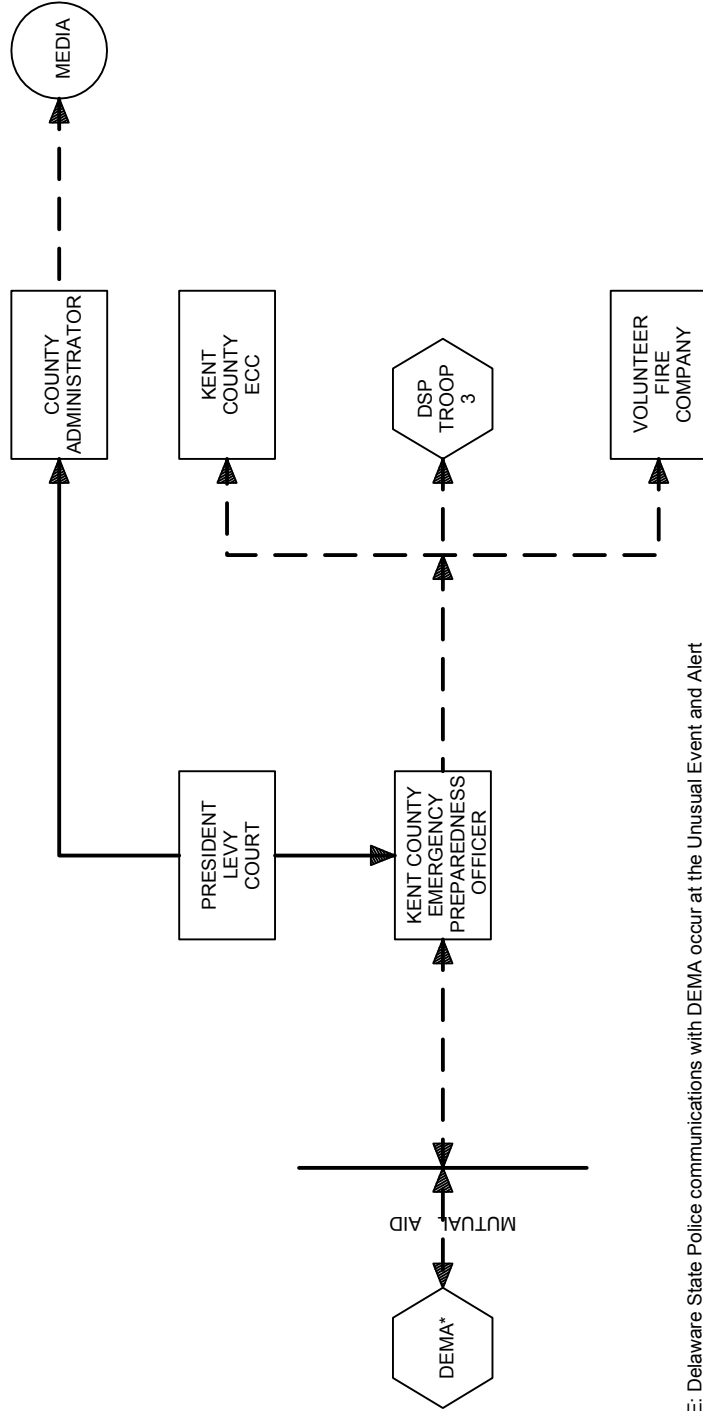
FIGURE 2-10  
NEW CASTLE COUNTY (NCC)  
COUNTY EMERGENCY ORGANIZATION



\*NOTE: Delaware State Police communications with DEMA occur at the Unusual Event and Alert classifications. At the Alert classification a turnover takes place to DEMA.

- COMMAND
- - - COORDINATION
- ▭ COUNTY
- ⬡ STATE
- PRIVATE

FIGURE 2-11  
KENT COUNTY  
COUNTY EMERGENCY ORGANIZATION



\*NOTE: Delaware State Police communications with DEMA occur at the Unusual Event and Alert classifications. At the Alert classification a turnover takes place to DEMA.

- COMMAND
- - - COORDINATION
- COUNTY
- ⬡ STATE
- PRIVATE