

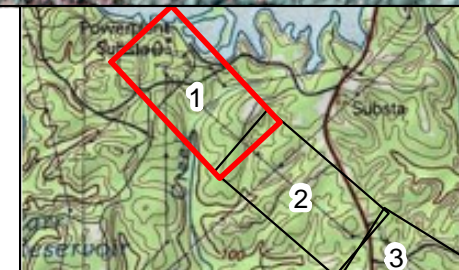
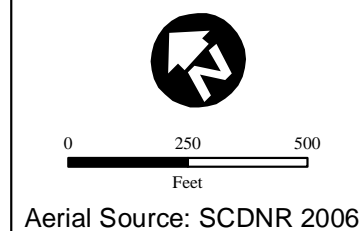




#### LEGEND

- Point of Intercept
- Data Point
- ~ Stream
- Flat Creek Line
-  Open Water
-  Wetland
- New ROW Area
- Existing ROW

NOTE: This map represents an approximation of wetland boundaries on the site by Mactec Engineering and Consulting Inc. This map is based on limited on-site field observations and available maps, and is subject to change following a full delineation and verification by the U.S. Army Corps of Engineers (USACE). This map should be used for preliminary planning purposes only.



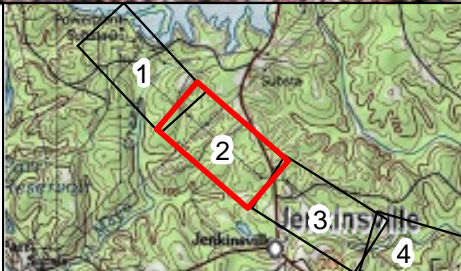
**MACTEC**

Created by: CGS  
Checked By: KMR  
Approved by: AWC  
October 3, 2010

**Figure 2:**  
**Jurisdictional Waters of the**  
**US Within the Proposed**  
**VCSNS-Flat Creek**  
**Transmission Corridor**  
**Sheet 1**






<p><b>LEGEND</b></p> <ul style="list-style-type: none"> <li>● Point of Intercept</li> <li>○ Data Point</li> <li>~ Stream</li> <li>— Flat Creek Line</li> <li>⊗ Open Water</li> <li>⊗ Wetland</li> <li>□ New ROW Area</li> <li>□ Existing ROW</li> </ul>	<p>NOTE: This map represents an approximation of wetland boundaries on the site by Mactec Engineering and Consulting Inc. This map is based on limited on-site field observations and available maps, and is subject to change following a full delineation and verification by the U.S. Army Corps of Engineers (USACE). This map should be used for preliminary planning purposes only.</p>	<p>0 250 500 Feet</p> <p>Aerial Source: SCDNR 2006</p>		<p><b>MACTEC</b></p> <p>Created by: CGS Checked By: KMR Approved by: AWC October 3, 2010</p>	<p><b>Figure 2:</b> <b>Jurisdictional Waters of the</b> <b>US Within the Proposed</b> <b>VCSNS-Flat Creek</b> <b>Transmission Corridor</b></p> <p><b>Sheet 2</b></p>
---	---	--	---	--	--

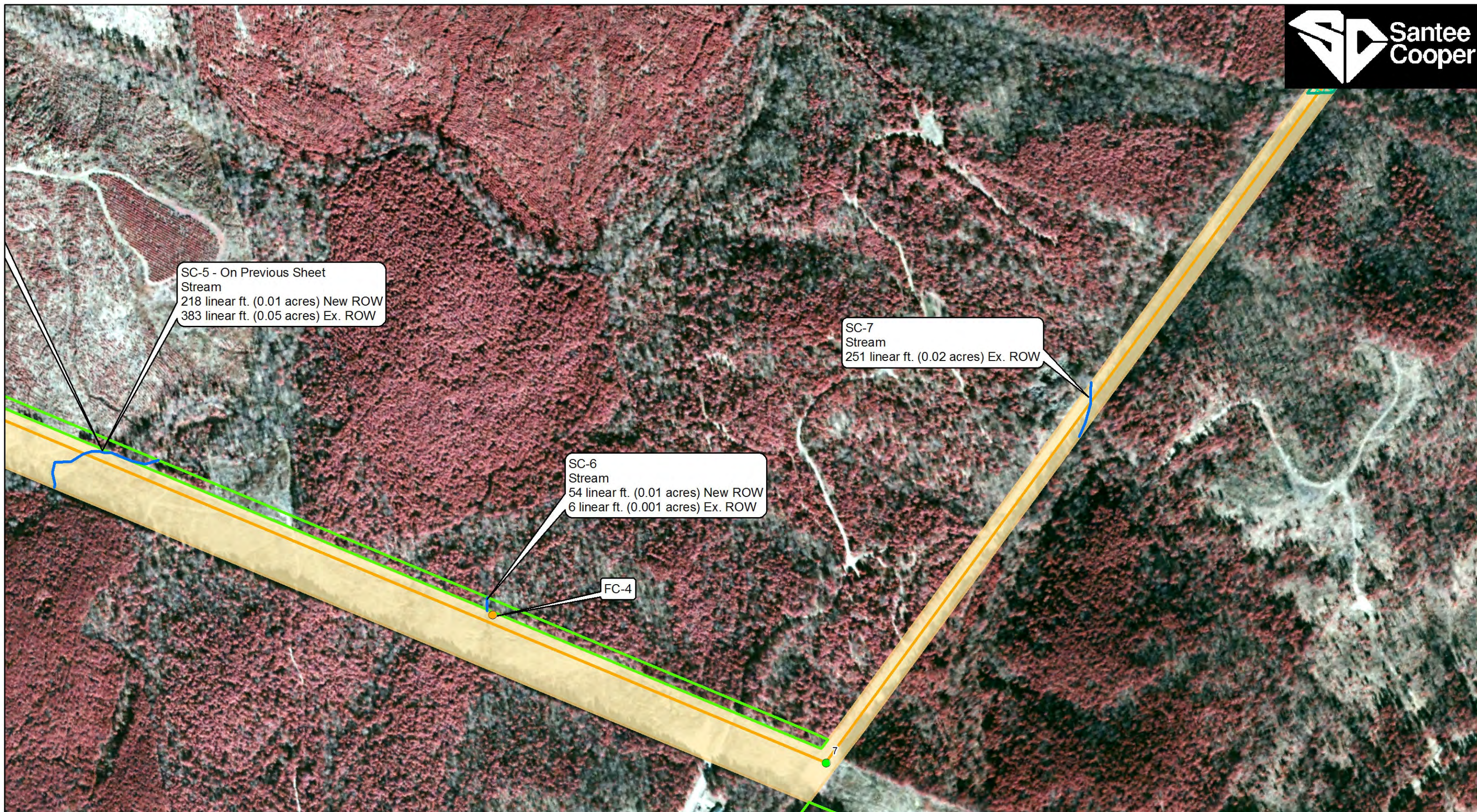





SC-5  
Stream  
218 linear ft. (0.03 acres) New ROW  
383 linear ft. (0.05 acres) Ex. ROW

<p><b>LEGEND</b></p> <ul style="list-style-type: none"> <li>● Point of Intercept</li> <li>● Data Point</li> <li>~ Stream</li> <li>— Flat Creek Line</li> <li>⊗ Open Water</li> <li>⊗ Wetland</li> <li>□ New ROW Area</li> <li>□ Existing ROW</li> </ul>	<p>NOTE: This map represents an approximation of wetland boundaries on the site by Mactec Engineering and Consulting Inc. This map is based on limited on-site field observations and available maps, and is subject to change following a full delineation and verification by the U.S. Army Corps of Engineers (USACE). This map should be used for preliminary planning purposes only.</p>	<p>0 250 500 Feet</p> <p>Aerial Source: SCDNR 2006</p>		<p><b>MACTEC</b></p> <p>Created by: CGS Checked By: KMR Approved by: AWC October 3, 2010</p>	<p><b>Figure 2:</b> <b>Jurisdictional Waters of the</b> <b>US Within the Proposed</b> <b>VCSNS-Flat Creek</b> <b>Transmission Corridor</b></p> <p><b>Sheet 3</b></p>
---	---	--	---	--	--

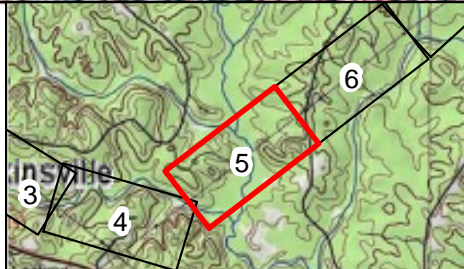




<p><b>LEGEND</b></p> <ul style="list-style-type: none"> <li>● Point of Intercept</li> <li>● Data Point</li> <li>~ Stream</li> <li>— Flat Creek Line</li> <li>☐ Open Water</li> <li>☐ Wetland</li> <li>☐ New ROW Area</li> <li>☐ Existing ROW</li> </ul>	<p>NOTE: This map represents an approximation of wetland boundaries on the site by Mactec Engineering and Consulting Inc. This map is based on limited on-site field observations and available maps, and is subject to change following a full delineation and verification by the U.S. Army Corps of Engineers (USACE). This map should be used for preliminary planning purposes only.</p>	<p>0 250 500 Feet</p> <p>Aerial Source: SCDNR 2006</p>		<p><b>MACTEC</b></p> <p>Created by: CGS Checked By: KMR Approved by: AWC November 2, 2010</p>	<p><b>Figure 2:</b> Jurisdictional Waters of the US Within the Proposed VCSNS-Flat Creek Transmission Corridor Sheet 4</p>
---	---	--	---	---	--







<p><b>LEGEND</b></p> <ul style="list-style-type: none"> <li>● Point of Intercept</li> <li>● Data Point</li> <li>~ Stream</li> <li>— Flat Creek Line</li> <li>⊗ Open Water</li> <li>⊗ Wetland</li> <li>□ New ROW Area</li> <li>□ Existing ROW</li> </ul>	<p>NOTE: This map represents an approximation of wetland boundaries on the site by Mactec Engineering and Consulting Inc. This map is based on limited on-site field observations and available maps, and is subject to change following a full delineation and verification by the U.S. Army Corps of Engineers (USACE). This map should be used for preliminary planning purposes only.</p>	<p>0 250 500 Feet</p> <p>Aerial Source: SCDNR 2006</p>		<p><b>MACTEC</b></p> <p>Created by: CGS Checked By: KMR Approved by: AWC November 2, 2010</p>	<p><b>Figure 2: Jurisdictional Waters of the US Within the Proposed VCSNS-Flat Creek Transmission Corridor</b></p> <p><b>Sheet 5</b></p>
---	---	--	---	---	--

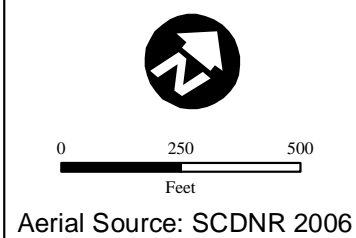




**LEGEND**

- Point of Intercept
- Data Point
- ~ Stream
- Flat Creek Line
-  Open Water
-  Wetland
- New ROW Area
- Existing ROW

NOTE: This map represents an approximation of wetland boundaries on the site by Mactec Engineering and Consulting Inc. This map is based on limited on-site field observations and available maps, and is subject to change following a full delineation and verification by the U.S. Army Corps of Engineers (USACE). This map should be used for preliminary planning purposes only.

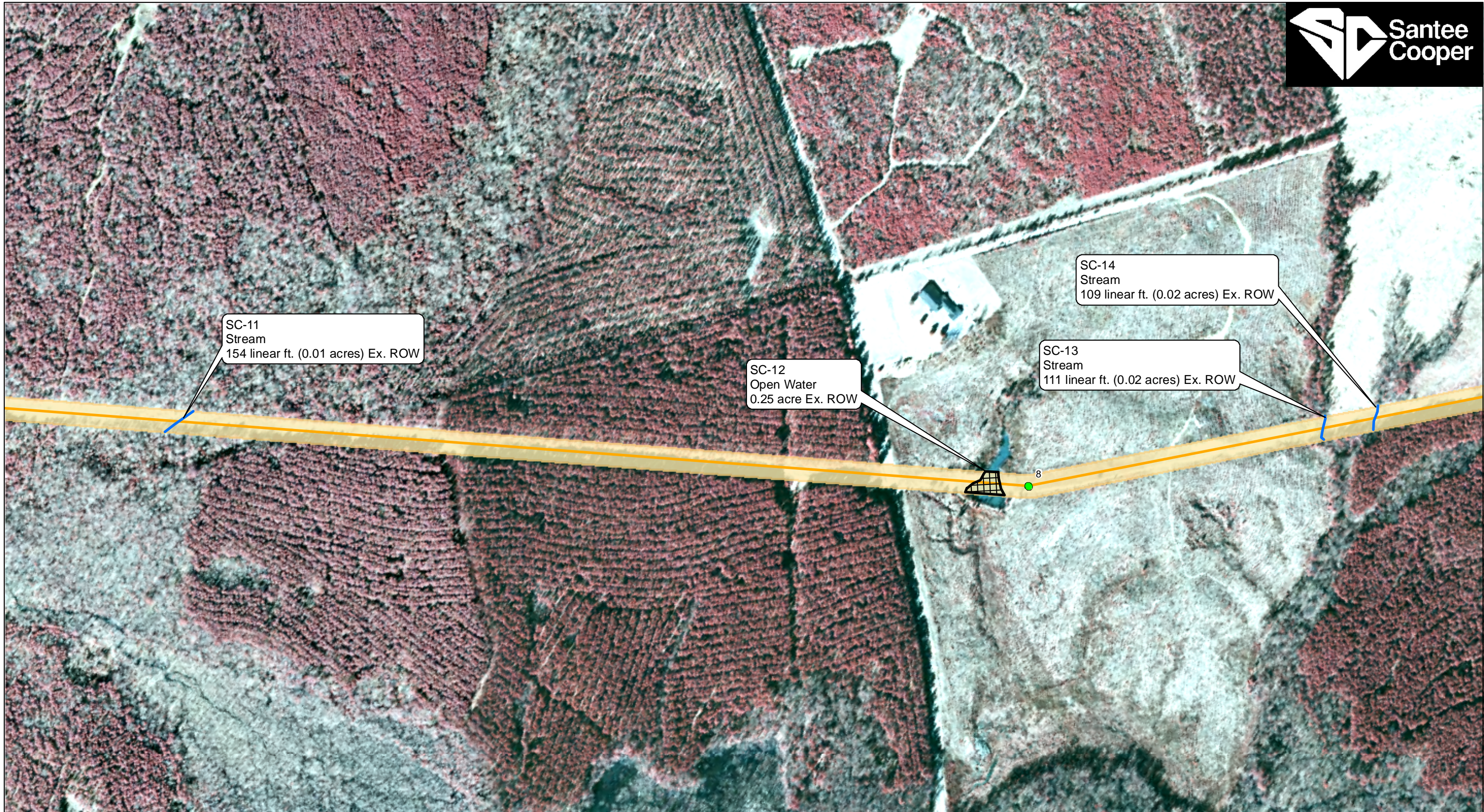


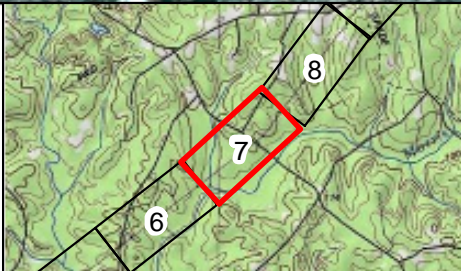
**MACTEC**

Created by: CGS  
 Checked By: KMR  
 Approved by: AWC  
 October 3, 2010

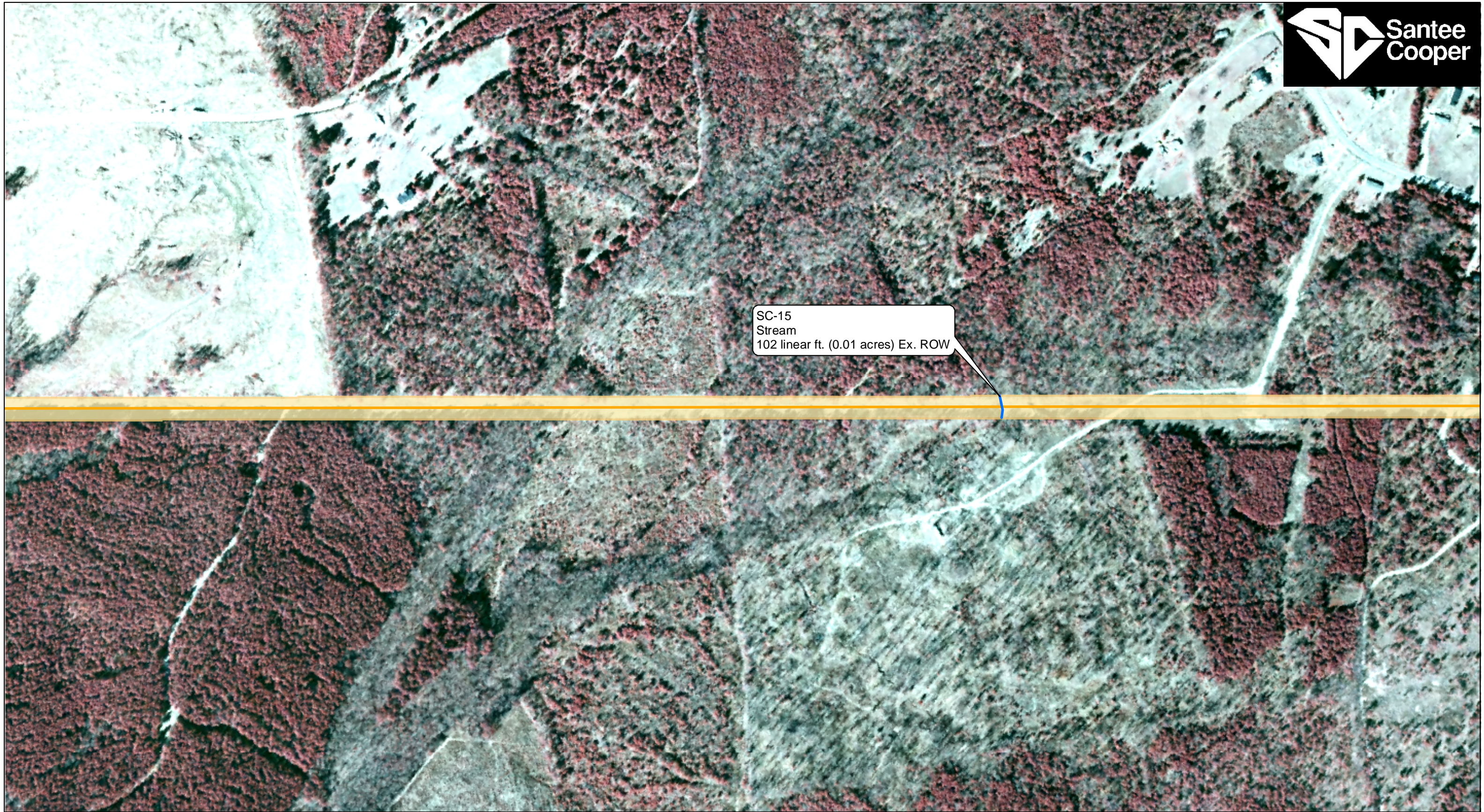
**Figure 2:**  
**Jurisdictional Waters of the**  
**US Within the Proposed**  
**VCSNS-Flat Creek**  
**Transmission Corridor**  
**Sheet 6**

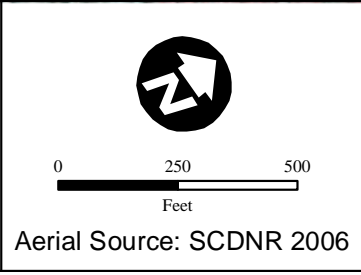
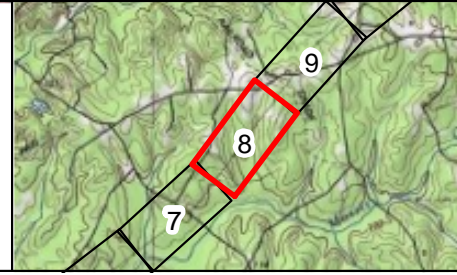




<p><b>LEGEND</b></p> <ul style="list-style-type: none"> <li>● Point of Intercept</li> <li>● Data Point</li> <li>~ Stream</li> <li>— Flat Creek Line</li> <li>⊗ Open Water</li> <li>⊗ Wetland</li> <li>□ New ROW Area</li> <li>□ Existing ROW</li> </ul>	<p>NOTE: This map represents an approximation of wetland boundaries on the site by Mactec Engineering and Consulting Inc. This map is based on limited on-site field observations and available maps, and is subject to change following a full delineation and verification by the U.S. Army Corps of Engineers (USACE). This map should be used for preliminary planning purposes only.</p>	<p>0 250 500 Feet</p> <p>Aerial Source: SCDNR 2006</p>		<p><b>MACTEC</b></p> <p>Created by: CGS Checked By: KMR Approved by: AWC October 3, 2010</p>	<p><b>Figure 2:</b> <b>Jurisdictional Waters of the</b> <b>US Within the Proposed</b> <b>VCSNS-Flat Creek</b> <b>Transmission Corridor</b></p> <p><b>Sheet 7</b></p>
---	---	--	---	--	--





<p><b>LEGEND</b></p> <ul style="list-style-type: none"> <li>● Point of Intercept</li> <li>● Data Point</li> <li>~ Stream</li> <li>— Flat Creek Line</li> <li>⊗ Open Water</li> <li>⊗ Wetland</li> <li>□ New ROW Area</li> <li>□ Existing ROW</li> </ul>	<p>NOTE: This map represents an approximation of wetland boundaries on the site by Mactec Engineering and Consulting Inc. This map is based on limited on-site field observations and available maps, and is subject to change following a full delineation and verification by the U.S. Army Corps of Engineers (USACE). This map should be used for preliminary planning purposes only.</p>	 <p>Aerial Source: SCDNR 2006</p>		<p><b>MACTEC</b></p> <p>Created by: CGS Checked By: KMR Approved by: AWC October 3, 2010</p>	<p><b>Figure 2:</b> <b>Jurisdictional Waters of the US Within the Proposed VCSNS-Flat Creek Transmission Corridor</b> <b>Sheet 8</b></p>
---	---	--	---	--	--





LEGEND

- Point of Intercept

Data Point

Stream

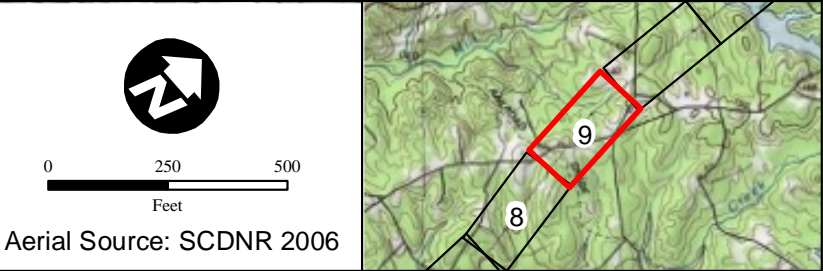
Flat Creek Line
- Open Water

Wetland

New ROW Area

Existing ROW

NOTE: This map represents an approximation of wetland boundaries on the site by Mactec Engineering and Consulting Inc. This map is based on limited on-site field observations and available maps, and is subject to change following a full delineation and verification by the U.S. Army Corps of Engineers (USACE). This map should be used for preliminary planning purposes only.





Created by: CGS

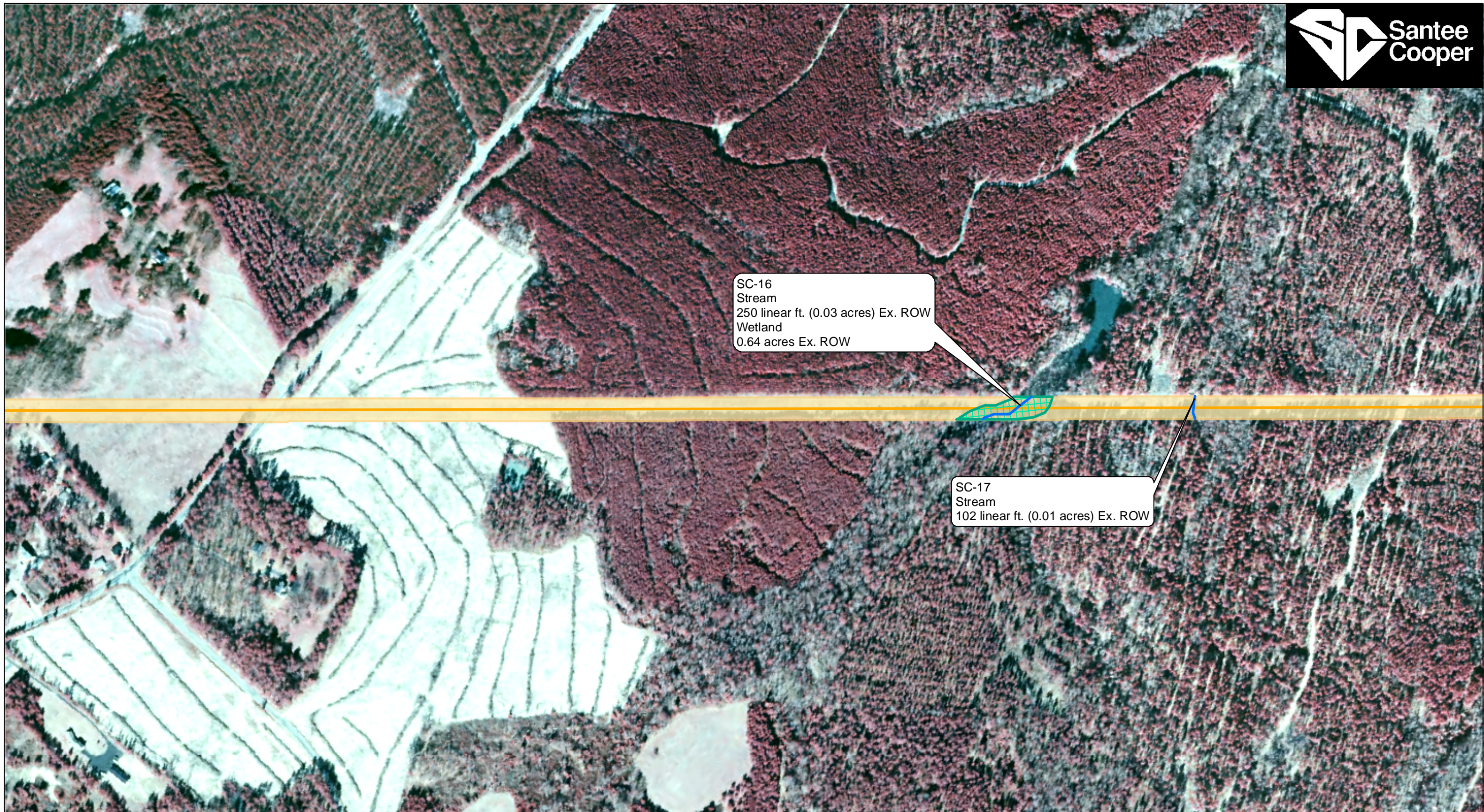
Checked By: KMR

Approved by: AWC



October 3, 2010

Figure 2:  
Jurisdictional Waters of the  
US Within the Proposed  
VCSNS-Flat Creek  
Transmission Corridor  
Sheet 9

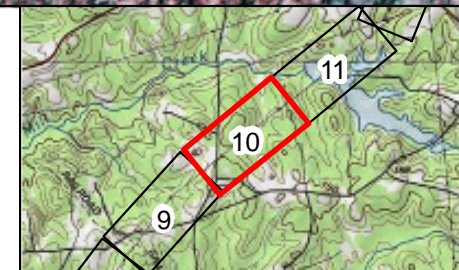
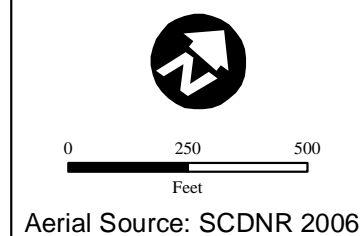




**LEGEND**

- Point of Intercept
- Data Point
- ~ Stream
- Flat Creek Line
-  Open Water
-  Wetland
- New ROW Area
- Existing ROW

NOTE: This map represents an approximation of wetland boundaries on the site by Mactec Engineering and Consulting Inc. This map is based on limited on-site field observations and available maps, and is subject to change following a full delineation and verification by the U.S. Army Corps of Engineers (USACE). This map should be used for preliminary planning purposes only.



**MACTEC**



Created by: CGS  
Checked By: KMR  
Approved by: AWC  
October 3, 2010

**Figure 2:**  
**Jurisdictional Waters of the**  
**US Within the Proposed**  
**VCSNS-Flat Creek**  
**Transmission Corridor**  
**Sheet 10**

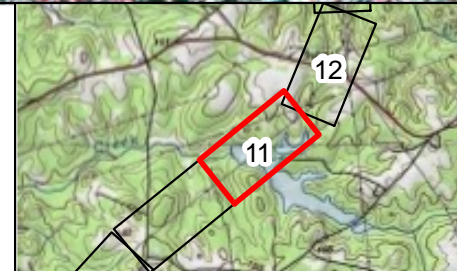
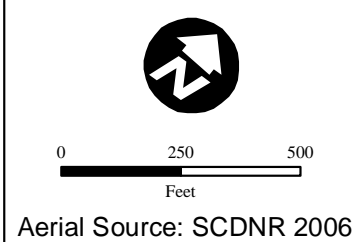




#### LEGEND

- Point of Intercept
- Data Point
- ~ Stream
- Flat Creek Line
-  Open Water
-  Wetland
- New ROW Area
- Existing ROW

NOTE: This map represents an approximation of wetland boundaries on the site by Mactec Engineering and Consulting Inc. This map is based on limited on-site field observations and available maps, and is subject to change following a full delineation and verification by the U.S. Army Corps of Engineers (USACE). This map should be used for preliminary planning purposes only.



**MACTEC**

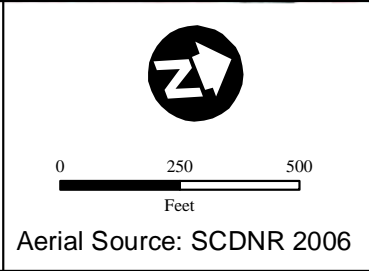
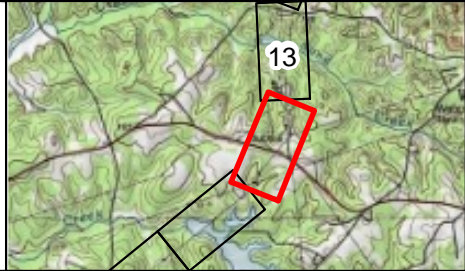

Created by: CGS  
Checked By: KMR  
Approved by: AWC  
October 3, 2010

**Figure 2:  
Jurisdictional Waters of the  
US Within the Proposed  
VCSNS-Flat Creek  
Transmission Corridor**

**Sheet 11**







<p><b>LEGEND</b></p> <ul style="list-style-type: none"> <li>● Point of Intercept</li> <li>● Data Point</li> <li>~ Stream</li> <li>— Flat Creek Line</li> <li>⊗ Open Water</li> <li>⊗ Wetland</li> <li>□ New ROW Area</li> <li>□ Existing ROW</li> </ul>	<p>NOTE: This map represents an approximation of wetland boundaries on the site by Mactec Engineering and Consulting Inc. This map is based on limited on-site field observations and available maps, and is subject to change following a full delineation and verification by the U.S. Army Corps of Engineers (USACE). This map should be used for preliminary planning purposes only.</p>	 <p>Aerial Source: SCDNR 2006</p>		 <p>Created by: CGS Checked By: KMR Approved by: AWC October 3, 2010</p>	<p><b>Figure 2:</b> <b>Jurisdictional Waters of the US Within the Proposed VCSNS-Flat Creek Transmission Corridor</b> <b>Sheet 12</b></p>
---	---	--	---	---	---

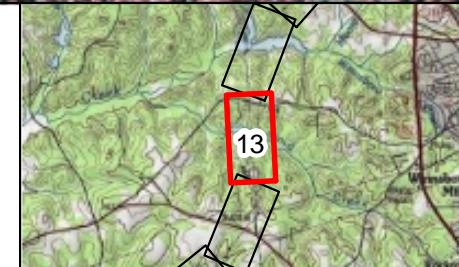
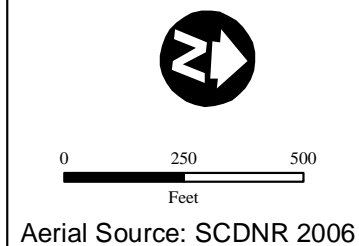




#### LEGEND

- Point of Intercept
- Data Point
- ~ Stream
- Flat Creek Line
-  Open Water
-  Wetland
- New ROW Area
- Existing ROW

NOTE: This map represents an approximation of wetland boundaries on the site by Mactec Engineering and Consulting Inc. This map is based on limited on-site field observations and available maps, and is subject to change following a full delineation and verification by the U.S. Army Corps of Engineers (USACE). This map should be used for preliminary planning purposes only.



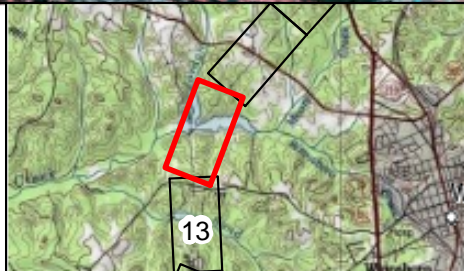
**MACTEC**

Created by: CGS  
Checked By: KMR  
Approved by: AWC  
October 3, 2010

**Figure 2:**  
**Jurisdictional Waters of the**  
**US Within the Proposed**  
**VCSNS-Flat Creek**  
**Transmission Corridor**  
**Sheet 13**






<p><b>LEGEND</b></p> <ul style="list-style-type: none"> <li>● Point of Intercept</li> <li>● Data Point</li> <li>~ Stream</li> <li>— Flat Creek Line</li> <li>⊗ Open Water</li> <li>⊗ Wetland</li> <li>□ New ROW Area</li> <li>□ Existing ROW</li> </ul>	<p>NOTE: This map represents an approximation of wetland boundaries on the site by Mactec Engineering and Consulting Inc. This map is based on limited on-site field observations and available maps, and is subject to change following a full delineation and verification by the U.S. Army Corps of Engineers (USACE). This map should be used for preliminary planning purposes only.</p>	<p>0 250 500 Feet</p> <p>Aerial Source: SCDNR 2006</p>		<p><b>MACTEC</b></p> <p>Created by: CGS Checked By: KMR Approved by: AWC October 3, 2010</p>	<p><b>Figure 2:</b> <b>Jurisdictional Waters of the US Within the Proposed VCSNS-Flat Creek Transmission Corridor</b></p> <p><b>Sheet 14</b></p>
---	---	--	---	--	--





<p><b>LEGEND</b></p> <ul style="list-style-type: none"> <li>● Point of Intercept</li> <li>● Data Point</li> <li>~ Stream</li> <li>— Flat Creek Line</li> <li>⊗ Open Water</li> <li>⊗ Wetland</li> <li>□ New ROW Area</li> <li>□ Existing ROW</li> </ul>	<p>NOTE: This map represents an approximation of wetland boundaries on the site by Mactec Engineering and Consulting Inc. This map is based on limited on-site field observations and available maps, and is subject to change following a full delineation and verification by the U.S. Army Corps of Engineers (USACE). This map should be used for preliminary planning purposes only.</p>	<p>0 250 500 Feet</p> <p>Aerial Source: SCDNR 2006</p>		<p><b>MACTEC</b></p> <p>Created by: CGS Checked By: KMR Approved by: AWC October 3, 2010</p>	<p><b>Figure 2: Jurisdictional Waters of the US Within the Proposed VCSNS-Flat Creek Transmission Corridor</b></p> <p><b>Sheet 15</b></p>
---	---	--	---	--	---