

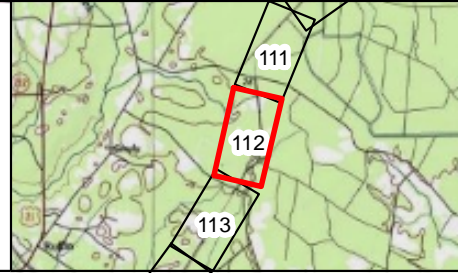
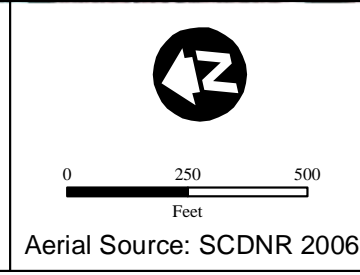
SC-370
 Waters of the US
 101 linear ft. (0.01 acres) Ex. ROW
 Wetland
 11.17 acres Ex. ROW



LEGEND

Point of Intercept	Open Water
Data Point	Wetland
Stream	New ROW Area
Waters of the US	Existing ROW
Varnville Line	

NOTE: This map represents an approximation of wetland boundaries on the site by Mactec Engineering and Consulting Inc. This map is based on limited on-site field observations and available maps, and is subject to change following a full delineation and verification by the U.S. Army Corps of Engineers (USACE). This map should be used for preliminary planning purposes only.



MACTEC

Created by: CGS
 Checked By: KMR
 Approved by: AWC
 October 3, 2010

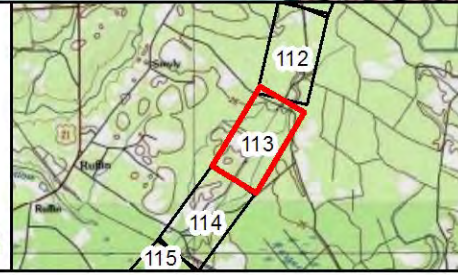
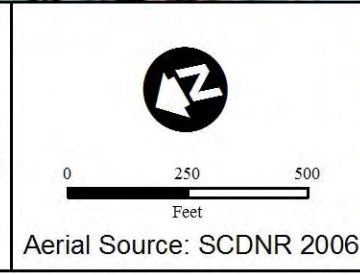
Figure 2:
Jurisdictional Waters of the US Within the Proposed VCSNS-Varnville Transmission Corridor
Sheet 112



LEGEND

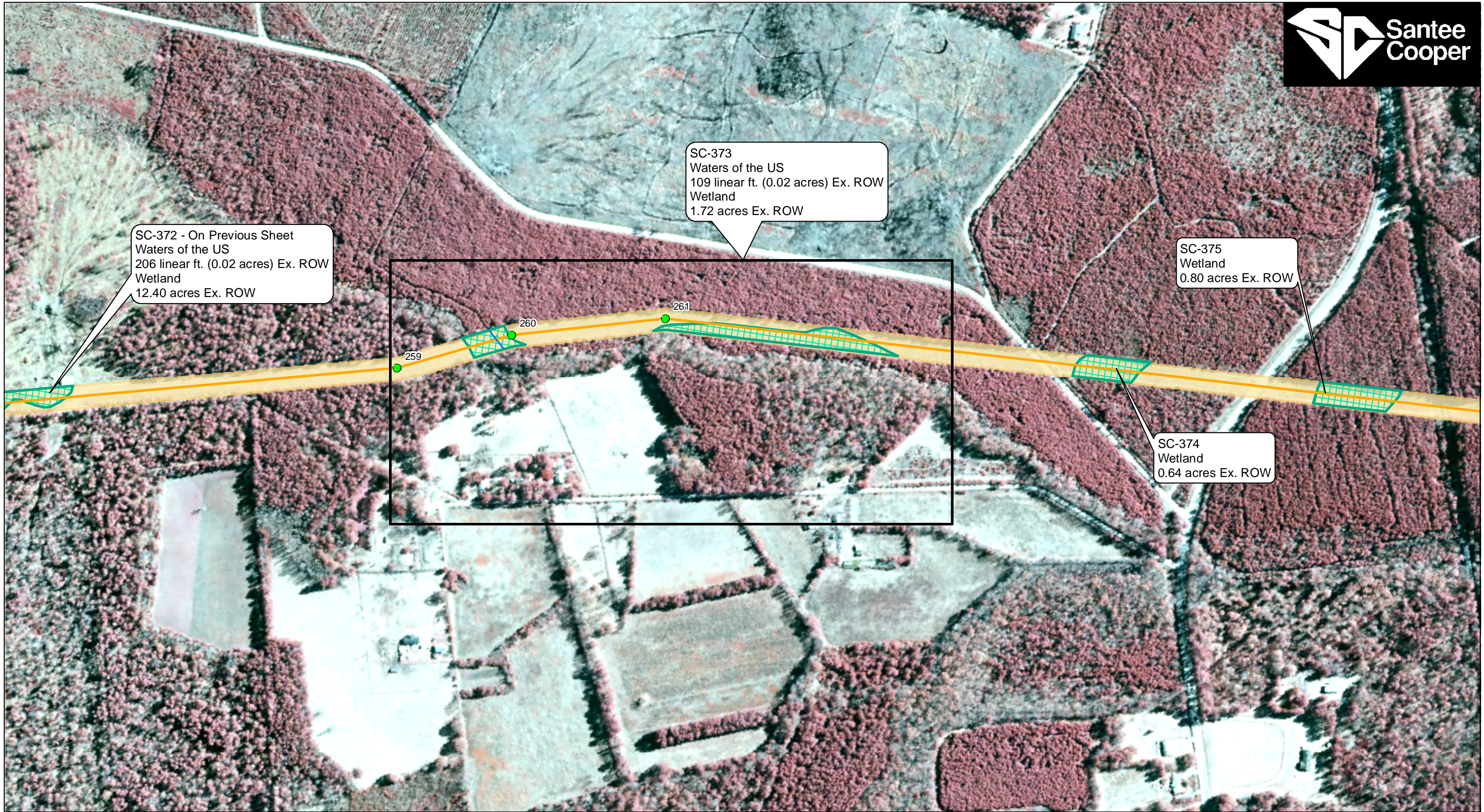
Point of Intercept	Open Water
Data Point	Wetland
Stream	New ROW Area
Waters of the US	Existing ROW
Varnville Line	

NOTE: This map represents an approximation of wetland boundaries on the site by Mactec Engineering and Consulting Inc. This map is based on limited on-site field observations and available maps, and is subject to change following a full delineation and verification by the U.S. Army Corps of Engineers (USACE). This map should be used for preliminary planning purposes only.



Created by: CGS
Checked By: KMR
Approved by: AWC
October 3, 2010

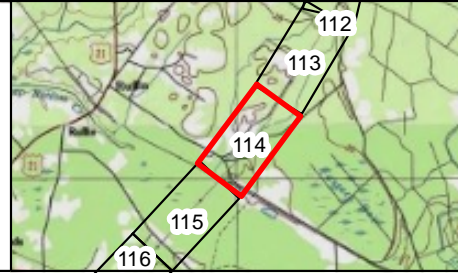
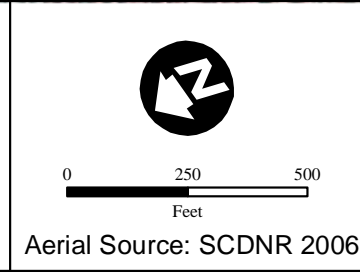
Figure 2:
Jurisdictional Waters of the US Within the Proposed VCSNS-Varnville Transmission Corridor
Sheet 113



LEGEND

Point of Intercept	Open Water
Data Point	Wetland
Stream	New ROW Area
Waters of the US	Existing ROW
Varnville Line	

NOTE: This map represents an approximation of wetland boundaries on the site by Mactec Engineering and Consulting Inc. This map is based on limited on-site field observations and available maps, and is subject to change following a full delineation and verification by the U.S. Army Corps of Engineers (USACE). This map should be used for preliminary planning purposes only.



MACTEC

Created by: CGS
 Checked By: KMR
 Approved by: AWC
 October 3, 2010

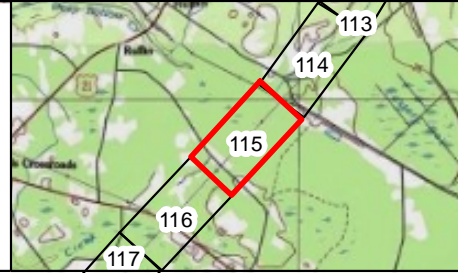
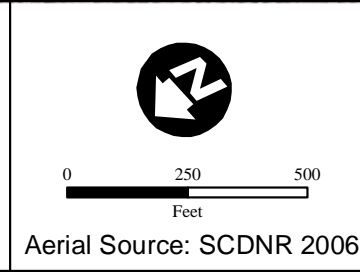
Figure 2:
Jurisdictional Waters of the US Within the Proposed VCSNS-Varnville Transmission Corridor
Sheet 114



LEGEND

Point of Intercept	Open Water
Data Point	Wetland
Stream	New ROW Area
Waters of the US	Existing ROW
Varnville Line	

NOTE: This map represents an approximation of wetland boundaries on the site by Mactec Engineering and Consulting Inc. This map is based on limited on-site field observations and available maps, and is subject to change following a full delineation and verification by the U.S. Army Corps of Engineers (USACE). This map should be used for preliminary planning purposes only.



MACTEC

Created by: CGS
 Checked By: KMR
 Approved by: AWC
 October 3, 2010

Figure 2:
Jurisdictional Waters of the US Within the Proposed VCSNS-Varnville Transmission Corridor
Sheet 115



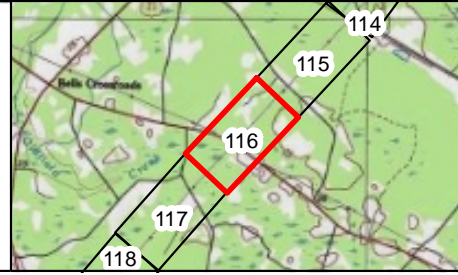
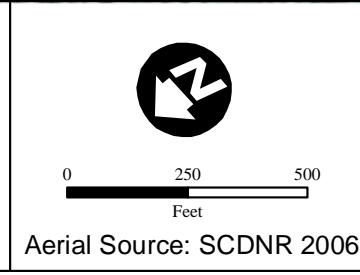
SC-378
Wetland
6.84 acres Ex. ROW

SC-379
Stream
143 linear ft. (0.02 acres) Ex. ROW
Wetland
8.18 acres Ex. ROW

LEGEND

Point of Intercept	Open Water
Data Point	Wetland
Stream	New ROW Area
Waters of the US	Existing ROW
Varnville Line	

NOTE: This map represents an approximation of wetland boundaries on the site by Mactec Engineering and Consulting Inc. This map is based on limited on-site field observations and available maps, and is subject to change following a full delineation and verification by the U.S. Army Corps of Engineers (USACE). This map should be used for preliminary planning purposes only.



MACTEC

Created by: CGS
Checked By: KMR
Approved by: AWC
October 3, 2010

**Figure 2:
Jurisdictional Waters of the
US Within the Proposed
VCSNS-Varnville
Transmission Corridor
Sheet 116**



SC-379 - On Previous Sheet
Stream
143 linear ft. (0.02 acres) Ex. ROW
Wetland
8.18 acres Ex. ROW

SC-380
Wetland
1.79 acres Ex. ROW

SC-381
Wetland
2.31 acres Ex. ROW

SC-382
Wetland
8.74 acres Ex. ROW

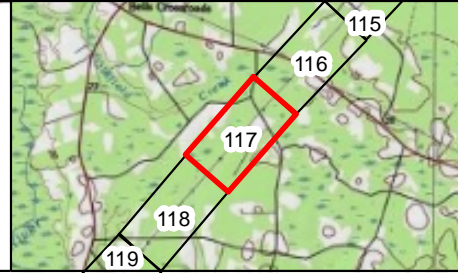
SC-382 - Cont. On Next Sheet
Wetland
8.74 acres Ex. ROW

LEGEND

- Point of Intercept
- Data Point
- Stream
- Waters of the US
- Varnville Line
- Open Water
- Wetland
- New ROW Area
- Existing ROW

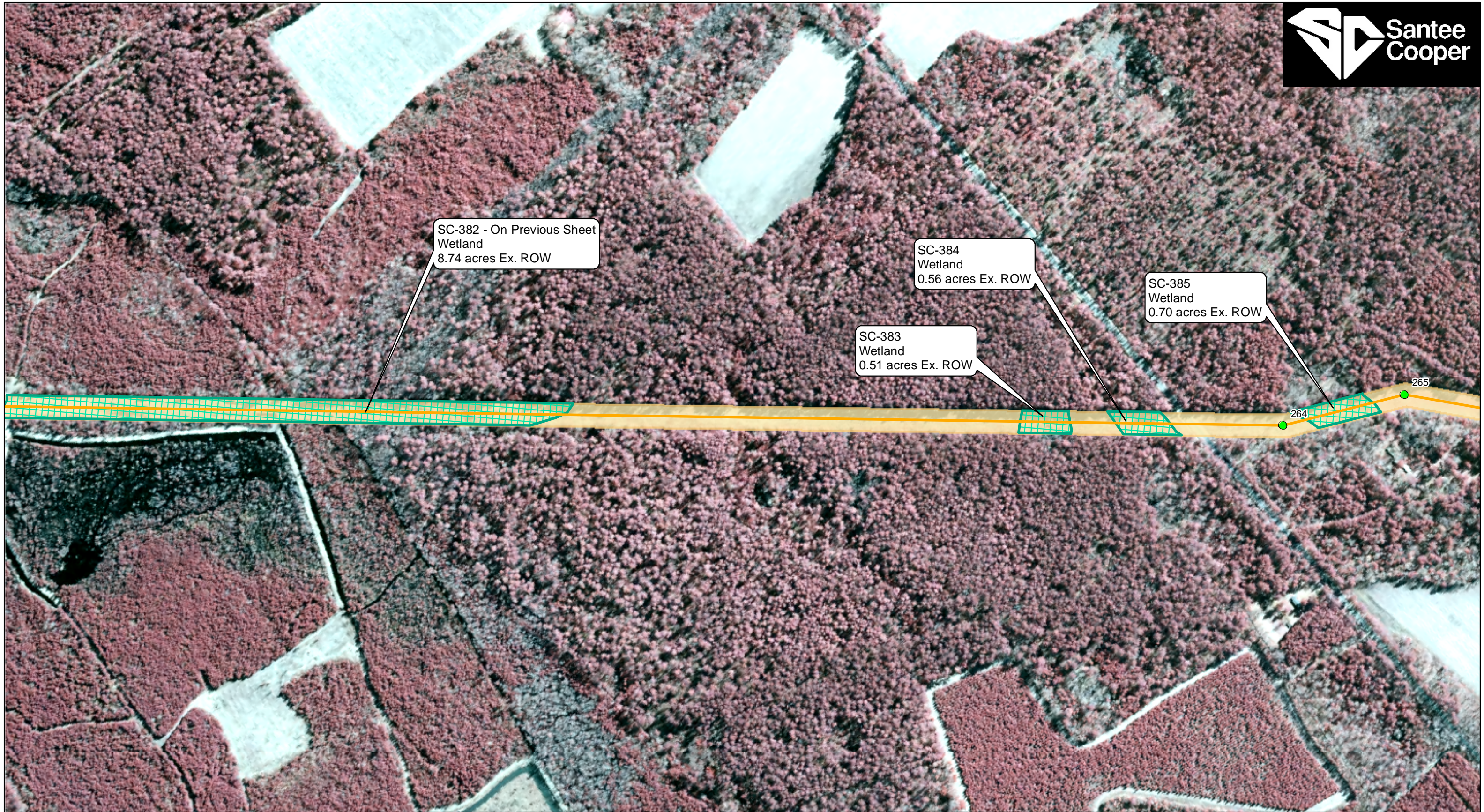
NOTE: This map represents an approximation of wetland boundaries on the site by Mactec Engineering and Consulting Inc. This map is based on limited on-site field observations and available maps, and is subject to change following a full delineation and verification by the U.S. Army Corps of Engineers (USACE). This map should be used for preliminary planning purposes only.

Aerial Source: SCDNR 2006



Created by: CGS
Checked By: KMR
Approved by: AWC
October 3, 2010

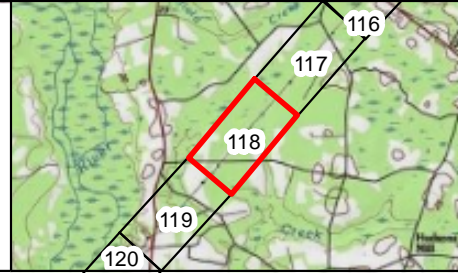
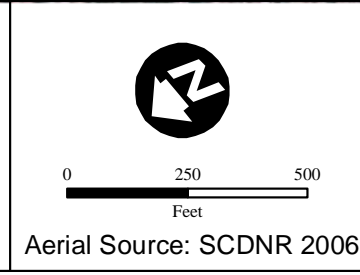
Figure 2:
Jurisdictional Waters of the US Within the Proposed VCSNS-Varnville Transmission Corridor
Sheet 117



LEGEND

Point of Intercept	Open Water
Data Point	Wetland
Stream	New ROW Area
Waters of the US	Existing ROW
Varnville Line	

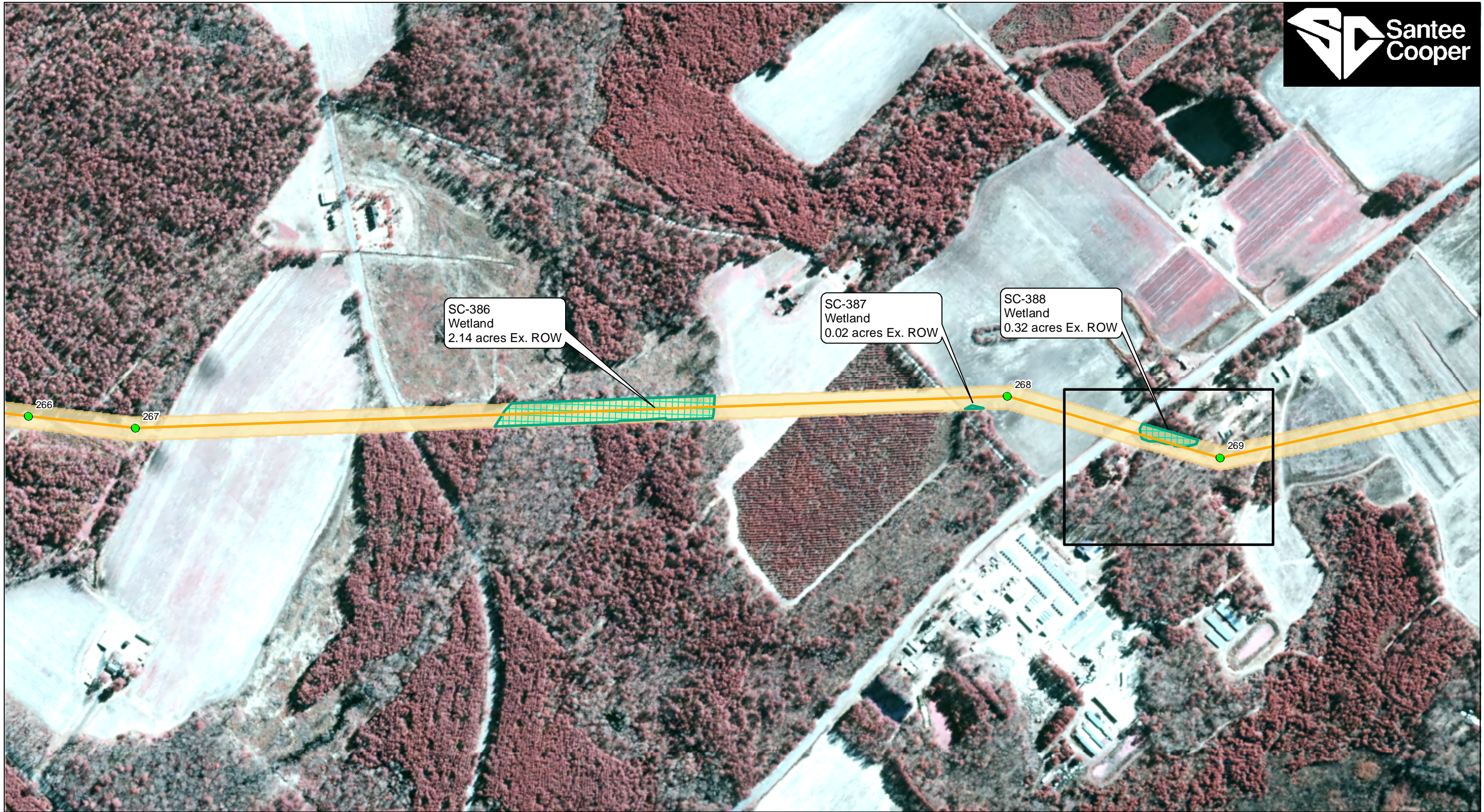
NOTE: This map represents an approximation of wetland boundaries on the site by Mactec Engineering and Consulting Inc. This map is based on limited on-site field observations and available maps, and is subject to change following a full delineation and verification by the U.S. Army Corps of Engineers (USACE). This map should be used for preliminary planning purposes only.



MACTEC

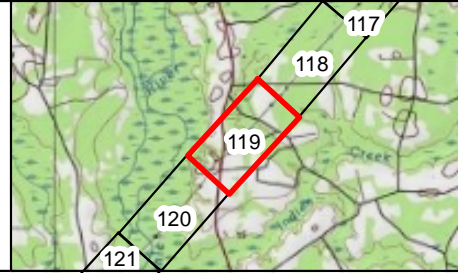
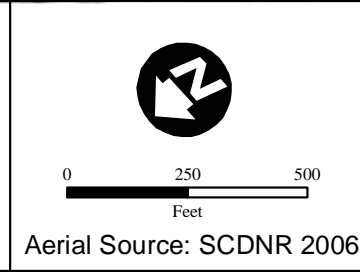
Created by: CGS
Checked By: KMR
Approved by: AWC
October 3, 2010

**Figure 2:
Jurisdictional Waters of the
US Within the Proposed
VCSNS-Varnville
Transmission Corridor
Sheet 118**



LEGEND	
Point of Intercept	Open Water
Data Point	Wetland
Stream	New ROW Area
Waters of the US	Existing ROW
Varnville Line	

NOTE: This map represents an approximation of wetland boundaries on the site by Mactec Engineering and Consulting Inc. This map is based on limited on-site field observations and available maps, and is subject to change following a full delineation and verification by the U.S. Army Corps of Engineers (USACE). This map should be used for preliminary planning purposes only.



MACTEC

Created by: CGS
 Checked By: KMR
 Approved by: AWC
 October 3, 2010

**Figure 2:
 Jurisdictional Waters of the
 US Within the Proposed
 VCSNS-Varnville
 Transmission Corridor
 Sheet 119**



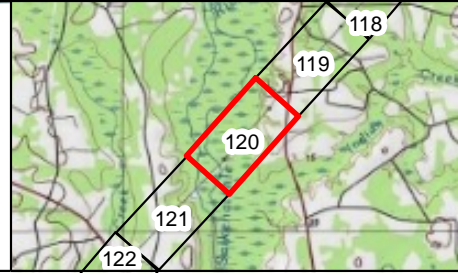
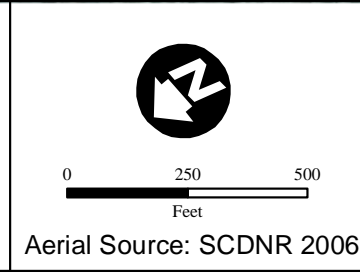
SC-389
Waters of the US
469 linear ft. (0.06 acres) Ex. ROW

SC-390
Stream
596 linear ft. (0.08 acres) Ex. ROW
Wetland
16.60 acres Ex. ROW



LEGEND	
Point of Intercept	Open Water
Data Point	Wetland
Stream	New ROW Area
Waters of the US	Existing ROW
Varnville Line	

NOTE: This map represents an approximation of wetland boundaries on the site by Mactec Engineering and Consulting Inc. This map is based on limited on-site field observations and available maps, and is subject to change following a full delineation and verification by the U.S. Army Corps of Engineers (USACE). This map should be used for preliminary planning purposes only.



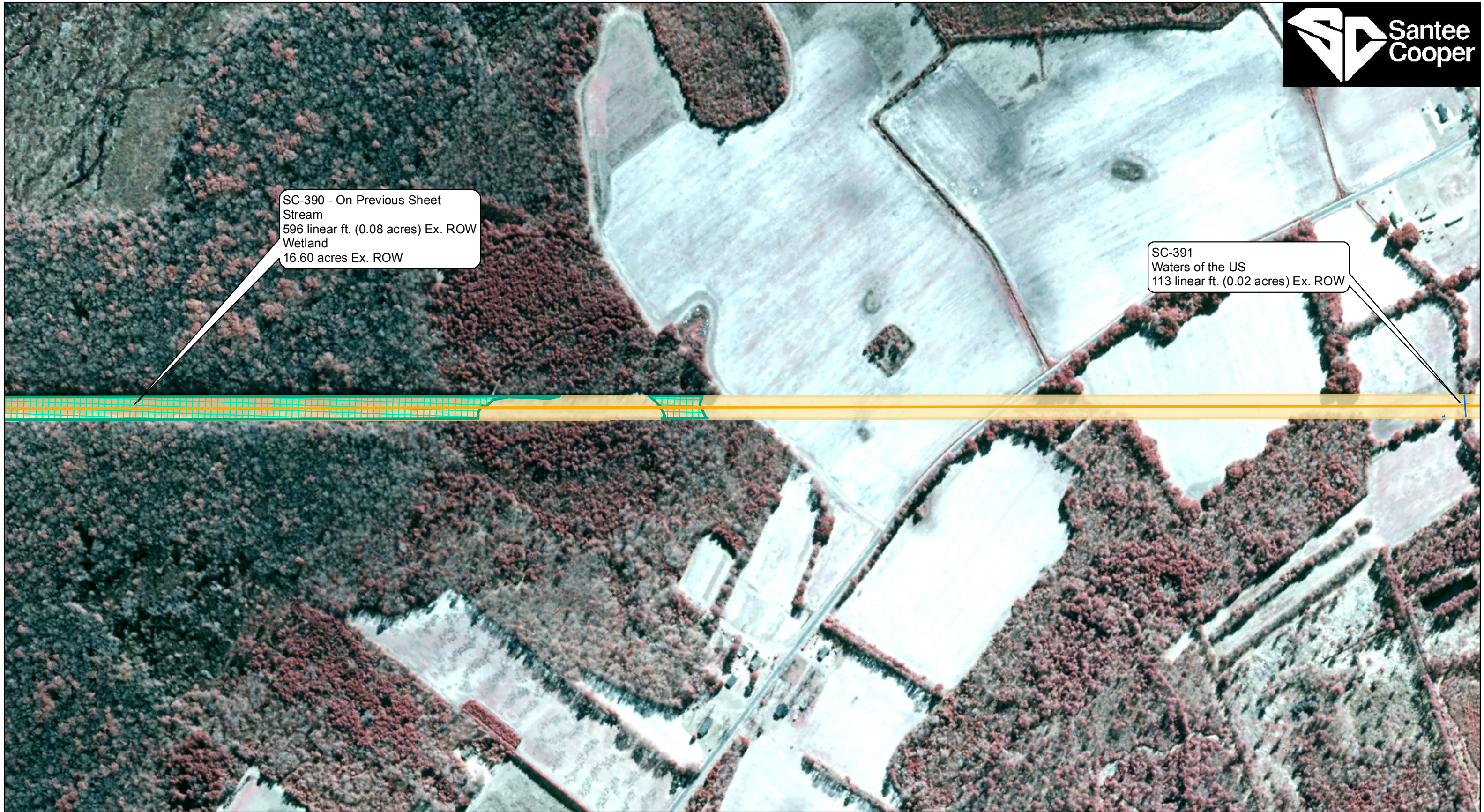
MACTEC

Created by: CGS
Checked By: KMR
Approved by: AWC
October 3, 2010

**Figure 2:
Jurisdictional Waters of the
US Within the Proposed
VCSNS-Varnville
Transmission Corridor
Sheet 120**

SC-390 - On Previous Sheet
Stream
596 linear ft. (0.08 acres) Ex. ROW
Wetland
16.60 acres Ex. ROW

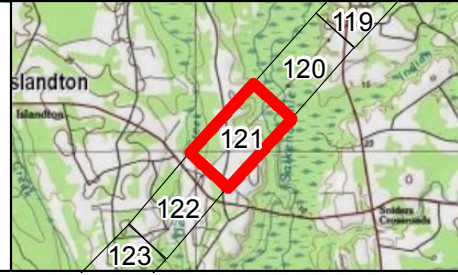
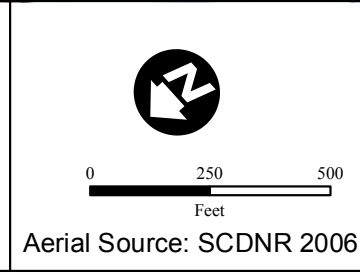
SC-391
Waters of the US
113 linear ft. (0.02 acres) Ex. ROW



LEGEND

Point of Intercept	Open Water
Data Point	Wetland
Stream	New ROW Area
Waters of the US	Existing ROW
Varnville Line	

NOTE: This map represents an approximation of wetland boundaries on the site by Mactec Engineering and Consulting Inc. This map is based on limited on-site field observations and available maps, and is subject to change following a full delineation and verification by the U.S. Army Corps of Engineers (USACE). This map should be used for preliminary planning purposes only.



MACTEC

Created by: CGS
Checked By: KMR
Approved by: AWC
November 5, 2010

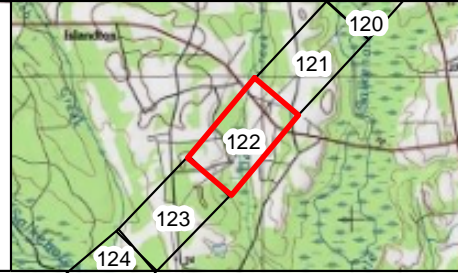
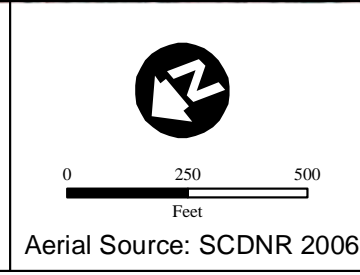
**Figure 2:
Jurisdictional Waters of the
US Within the Proposed
VCSNS-Varnville
Transmission Corridor
Sheet 121**



LEGEND

Point of Intercept	Open Water
Data Point	Wetland
Stream	New ROW Area
Waters of the US	Existing ROW
Varnville Line	

NOTE: This map represents an approximation of wetland boundaries on the site by Mactec Engineering and Consulting Inc. This map is based on limited on-site field observations and available maps, and is subject to change following a full delineation and verification by the U.S. Army Corps of Engineers (USACE). This map should be used for preliminary planning purposes only.



MACTEC

Created by: CGS
Checked By: KMR
Approved by: AWC
October 3, 2010

Figure 2:
Jurisdictional Waters of the US Within the Proposed VCSNS-Varnville Transmission Corridor
Sheet 122



SC-396
Wetland
2.03 acres Ex. ROW

SC-397
Wetland
3.93 acres Ex. ROW

273

274

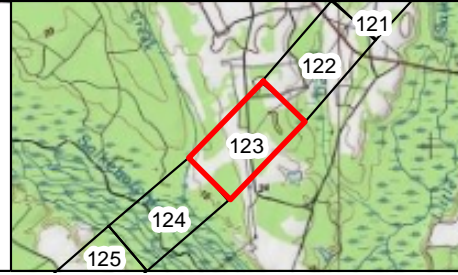
LEGEND

- Point of Intercept
- Data Point
- Stream
- Waters of the US
- Varnville Line
- Open Water
- Wetland
- New ROW Area
- Existing ROW

NOTE: This map represents an approximation of wetland boundaries on the site by Mactec Engineering and Consulting Inc. This map is based on limited on-site field observations and available maps, and is subject to change following a full delineation and verification by the U.S. Army Corps of Engineers (USACE). This map should be used for preliminary planning purposes only.

0 250 500
Feet

Aerial Source: SCDNR 2006












Created by: CGS
Checked By: KMR
Approved by: AWC
October 3, 2010

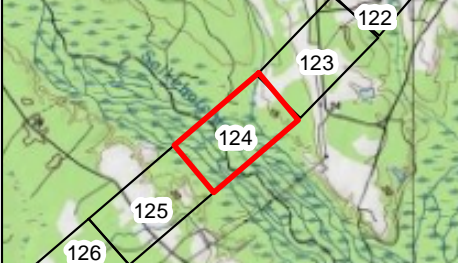
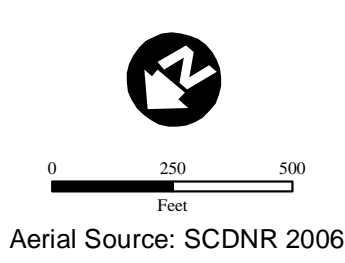
Figure 2:
Jurisdictional Waters of the US Within the Proposed VCSNS-Varnville Transmission Corridor
Sheet 123



SC-398
Wetland
13.52 acres Ex. ROW

LEGEND	
	Point of Intercept
	Data Point
	Stream
	Waters of the US
	Varnville Line
	Open Water
	Wetland
	New ROW Area
	Existing ROW

NOTE: This map represents an approximation of wetland boundaries on the site by Mactec Engineering and Consulting Inc. This map is based on limited on-site field observations and available maps, and is subject to change following a full delineation and verification by the U.S. Army Corps of Engineers (USACE). This map should be used for preliminary planning purposes only.



MACTEC
Created by: CGS
Checked By: KMR
Approved by: AWC
October 3, 2010

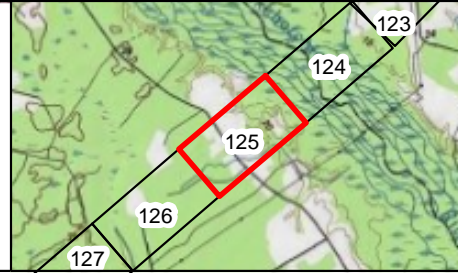
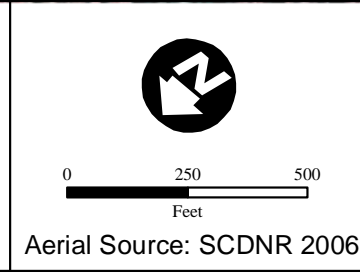
Figure 2:
Jurisdictional Waters of the US Within the Proposed VCSNS-Varnville Transmission Corridor
Sheet 124



LEGEND

Point of Intercept	Open Water
Data Point	Wetland
Stream	New ROW Area
Waters of the US	Existing ROW
Varnville Line	

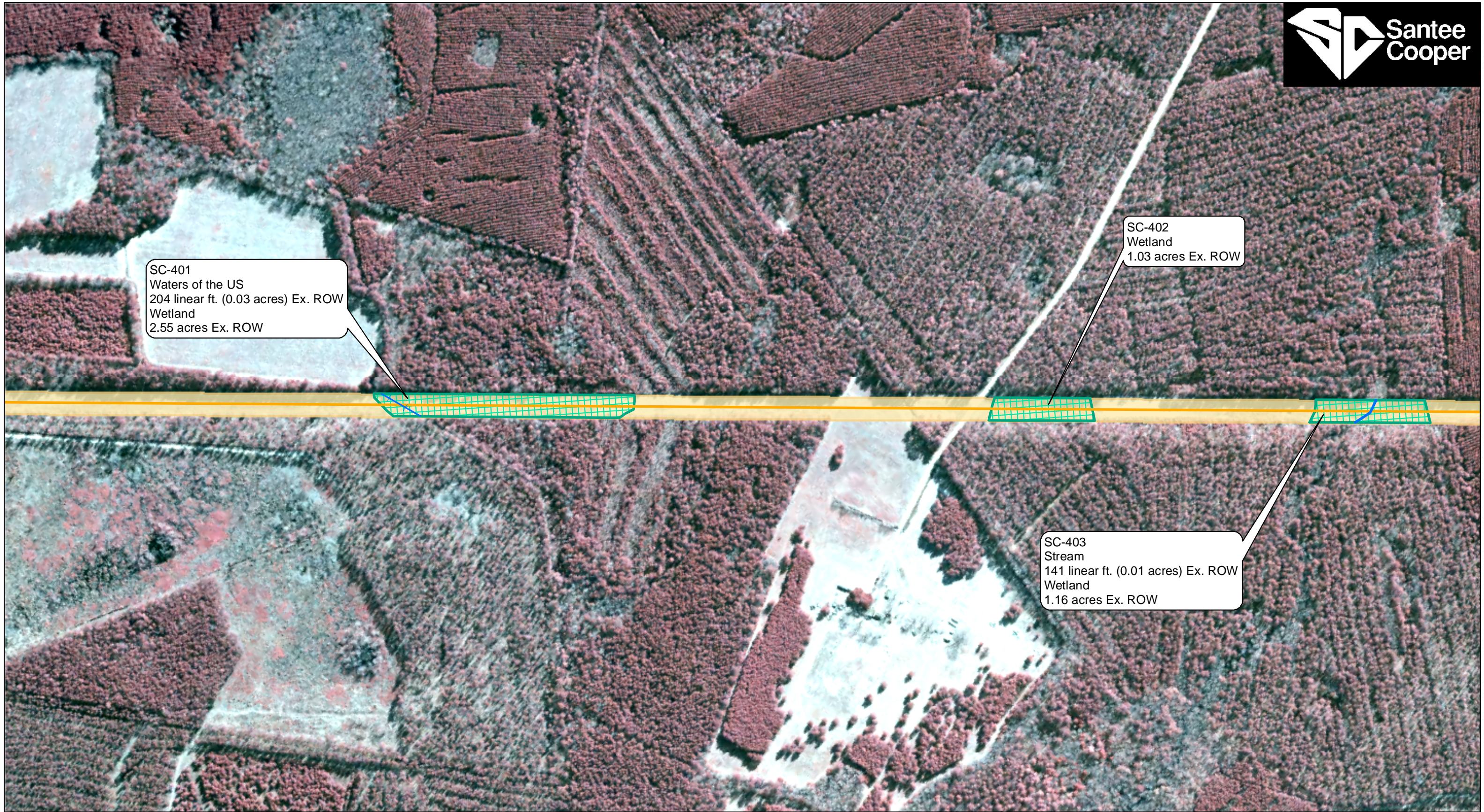
NOTE: This map represents an approximation of wetland boundaries on the site by Mactec Engineering and Consulting Inc. This map is based on limited on-site field observations and available maps, and is subject to change following a full delineation and verification by the U.S. Army Corps of Engineers (USACE). This map should be used for preliminary planning purposes only.



MACTEC

Created by: CGS
Checked By: KMR
Approved by: AWC
October 3, 2010

**Figure 2:
Jurisdictional Waters of the
US Within the Proposed
VCSNS-Varnville
Transmission Corridor
Sheet 125**



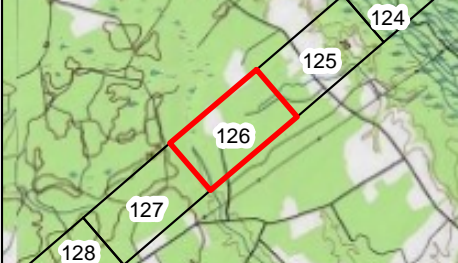
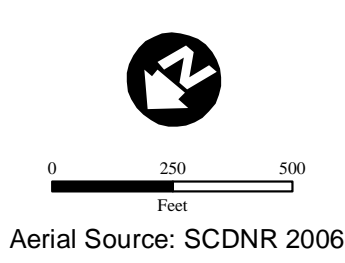
SC-401
Waters of the US
204 linear ft. (0.03 acres) Ex. ROW
Wetland
2.55 acres Ex. ROW

SC-402
Wetland
1.03 acres Ex. ROW

SC-403
Stream
141 linear ft. (0.01 acres) Ex. ROW
Wetland
1.16 acres Ex. ROW

LEGEND	
Point of Intercept	Open Water
Data Point	Wetland
Stream	New ROW Area
Waters of the US	Existing ROW
Varnville Line	

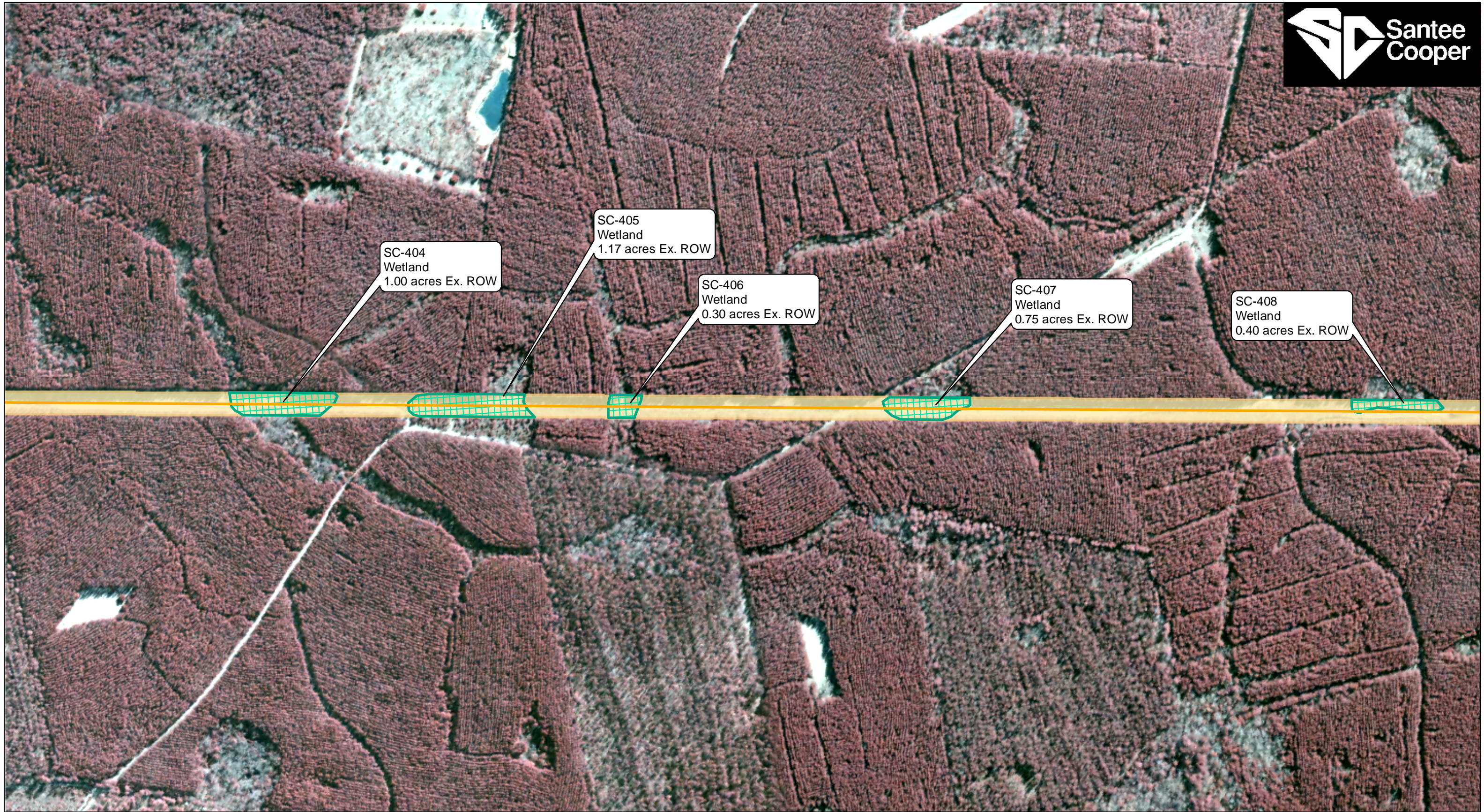
NOTE: This map represents an approximation of wetland boundaries on the site by Mactec Engineering and Consulting Inc. This map is based on limited on-site field observations and available maps, and is subject to change following a full delineation and verification by the U.S. Army Corps of Engineers (USACE). This map should be used for preliminary planning purposes only.



MACTEC

Created by: CGS
Checked By: KMR
Approved by: AWC
October 3, 2010

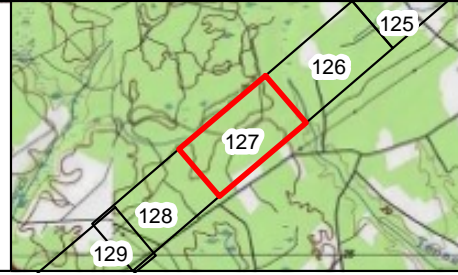
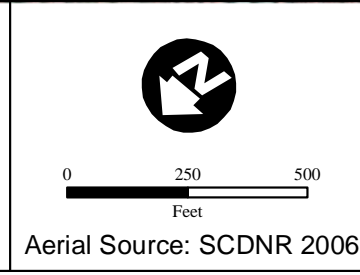
**Figure 2:
Jurisdictional Waters of the
US Within the Proposed
VCSNS-Varnville
Transmission Corridor
Sheet 126**



LEGEND

Point of Intercept	Open Water
Data Point	Wetland
Stream	New ROW Area
Waters of the US	Existing ROW
Varnville Line	

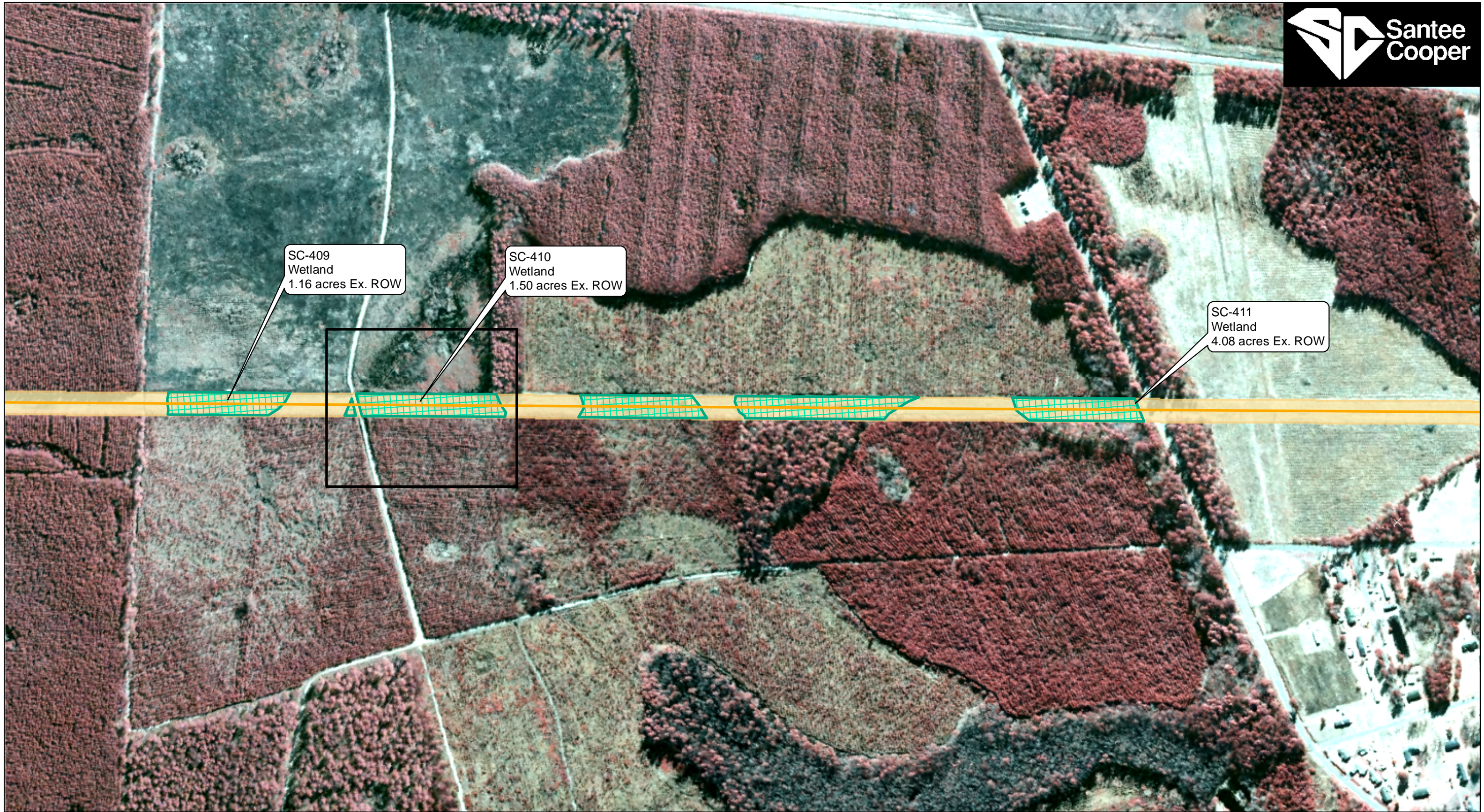
NOTE: This map represents an approximation of wetland boundaries on the site by Mactec Engineering and Consulting Inc. This map is based on limited on-site field observations and available maps, and is subject to change following a full delineation and verification by the U.S. Army Corps of Engineers (USACE). This map should be used for preliminary planning purposes only.



MACTEC

Created by: CGS
Checked By: KMR
Approved by: AWC
October 3, 2010

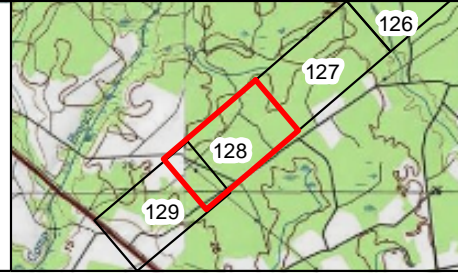
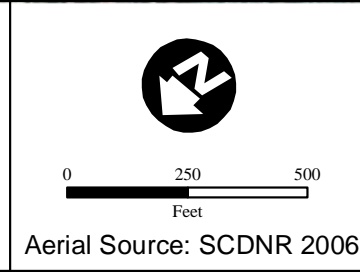
**Figure 2:
Jurisdictional Waters of the
US Within the Proposed
VCSNS-Varnville
Transmission Corridor
Sheet 127**



LEGEND

Point of Intercept	Open Water
Data Point	Wetland
Stream	New ROW Area
Waters of the US	Existing ROW
Varnville Line	

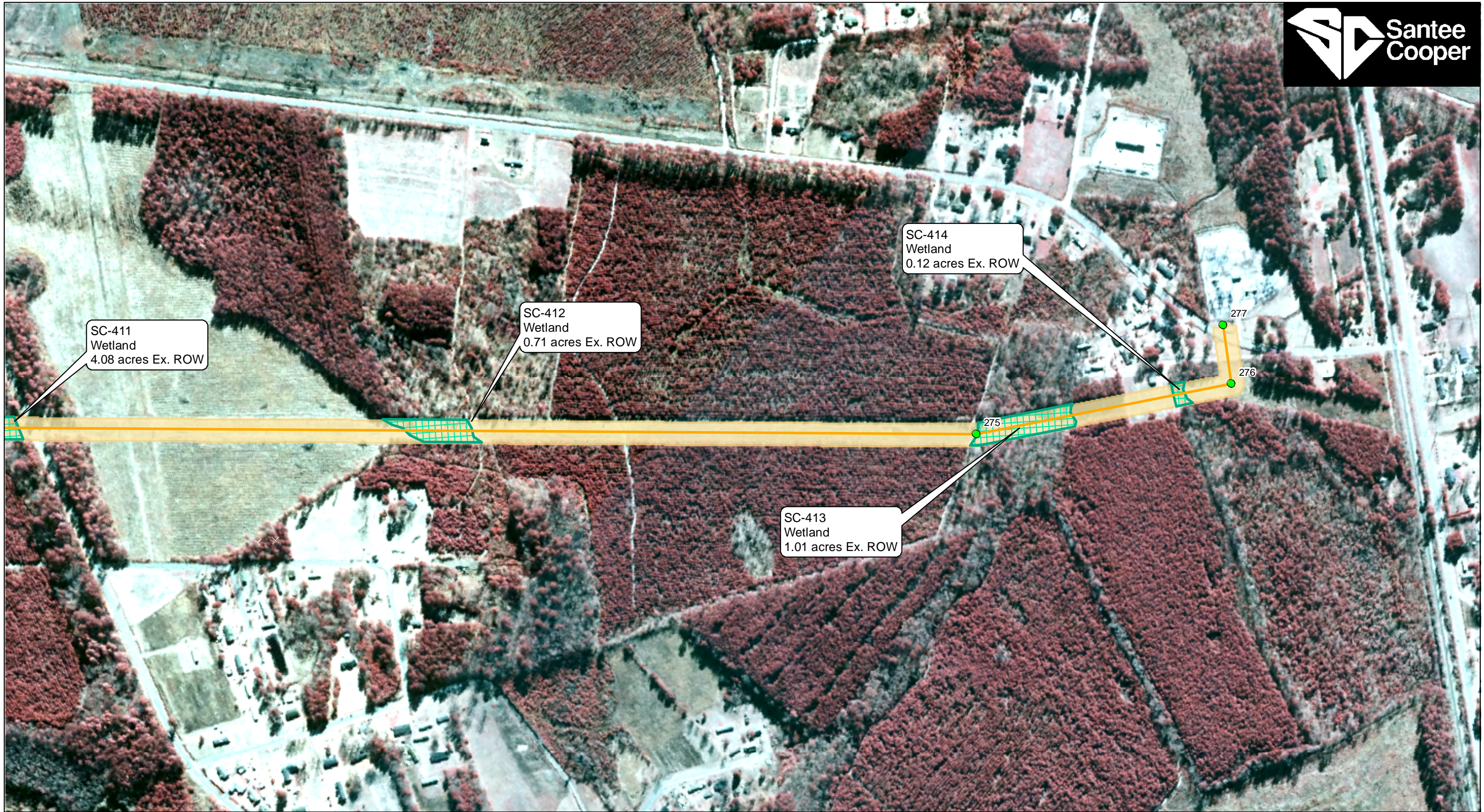
NOTE: This map represents an approximation of wetland boundaries on the site by Mactec Engineering and Consulting Inc. This map is based on limited on-site field observations and available maps, and is subject to change following a full delineation and verification by the U.S. Army Corps of Engineers (USACE). This map should be used for preliminary planning purposes only.



MACTEC

Created by: CGS
 Checked By: KMR
 Approved by: AWC
 October 3, 2010

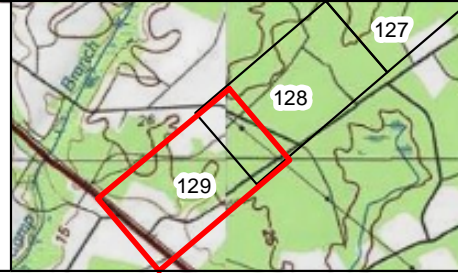
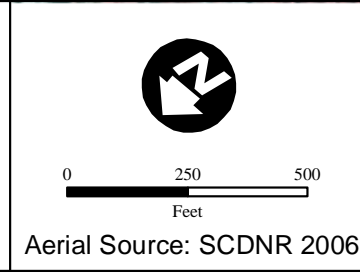
**Figure 2:
 Jurisdictional Waters of the
 US Within the Proposed
 VCSNS-Varnville
 Transmission Corridor
 Sheet 128**



LEGEND

Point of Intercept	Open Water
Data Point	Wetland
Stream	New ROW Area
Waters of the US	Existing ROW
Varnville Line	

NOTE: This map represents an approximation of wetland boundaries on the site by Mactec Engineering and Consulting Inc. This map is based on limited on-site field observations and available maps, and is subject to change following a full delineation and verification by the U.S. Army Corps of Engineers (USACE). This map should be used for preliminary planning purposes only.



MACTEC

Created by: CGS
Checked By: KMR
Approved by: AWC
October 3, 2010

Figure 2:
Jurisdictional Waters of the US Within the Proposed VCSNS-Varnville Transmission Corridor
Sheet 129