



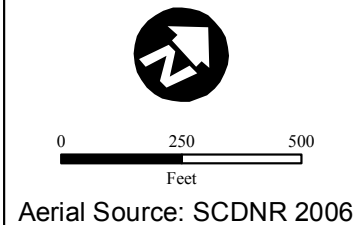




LEGEND

- Point of Intercept
- Data Point
- ~ Stream
- ~ Waters of the US
- Varnville Line
-  Open Water
-  Wetland
-  New ROW Area
-  Existing ROW

NOTE: This map represents an approximation of wetland boundaries on the site by Mactec Engineering and Consulting Inc. This map is based on limited on-site field observations and available maps, and is subject to change following a full delineation and verification by the U.S. Army Corps of Engineers (USACE). This map should be used for preliminary planning purposes only.



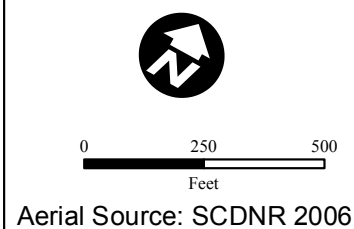
MACTEC

Created by: CGS
Checked By: KMR
Approved by: AWC
October 3, 2010

Figure 2:
Jurisdictional Waters of the
US Within the Proposed
VCSNS-Varnville
Transmission Corridor
Sheet 1



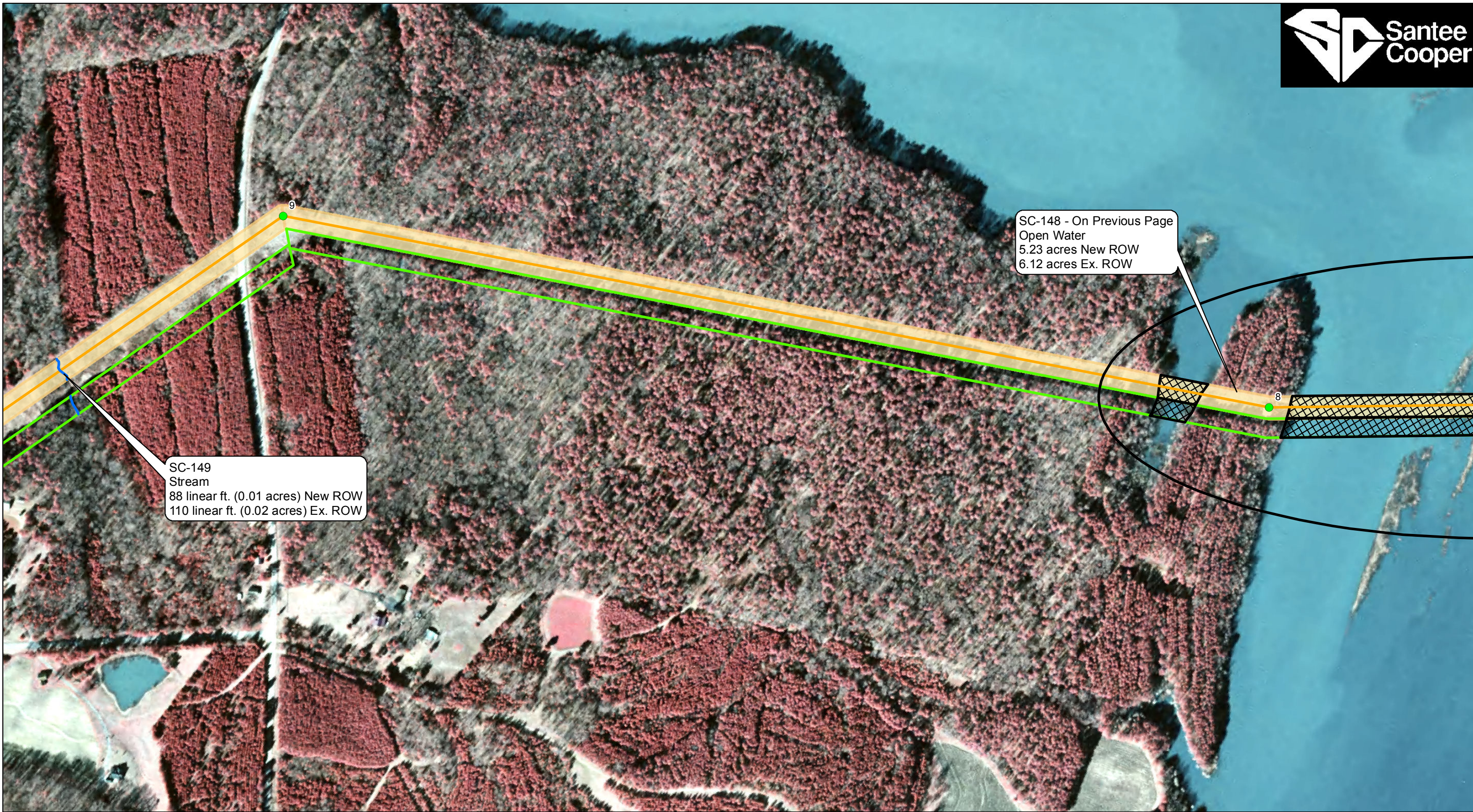
NOTE: This map represents an approximation of wetland boundaries on the site by Mactec Engineering and Consulting Inc. This map is based on limited on-site field observations and available maps, and is subject to change following a full delineation and verification by the U.S. Army Corps of Engineers (USACE). This map should be used for preliminary planning purposes only.




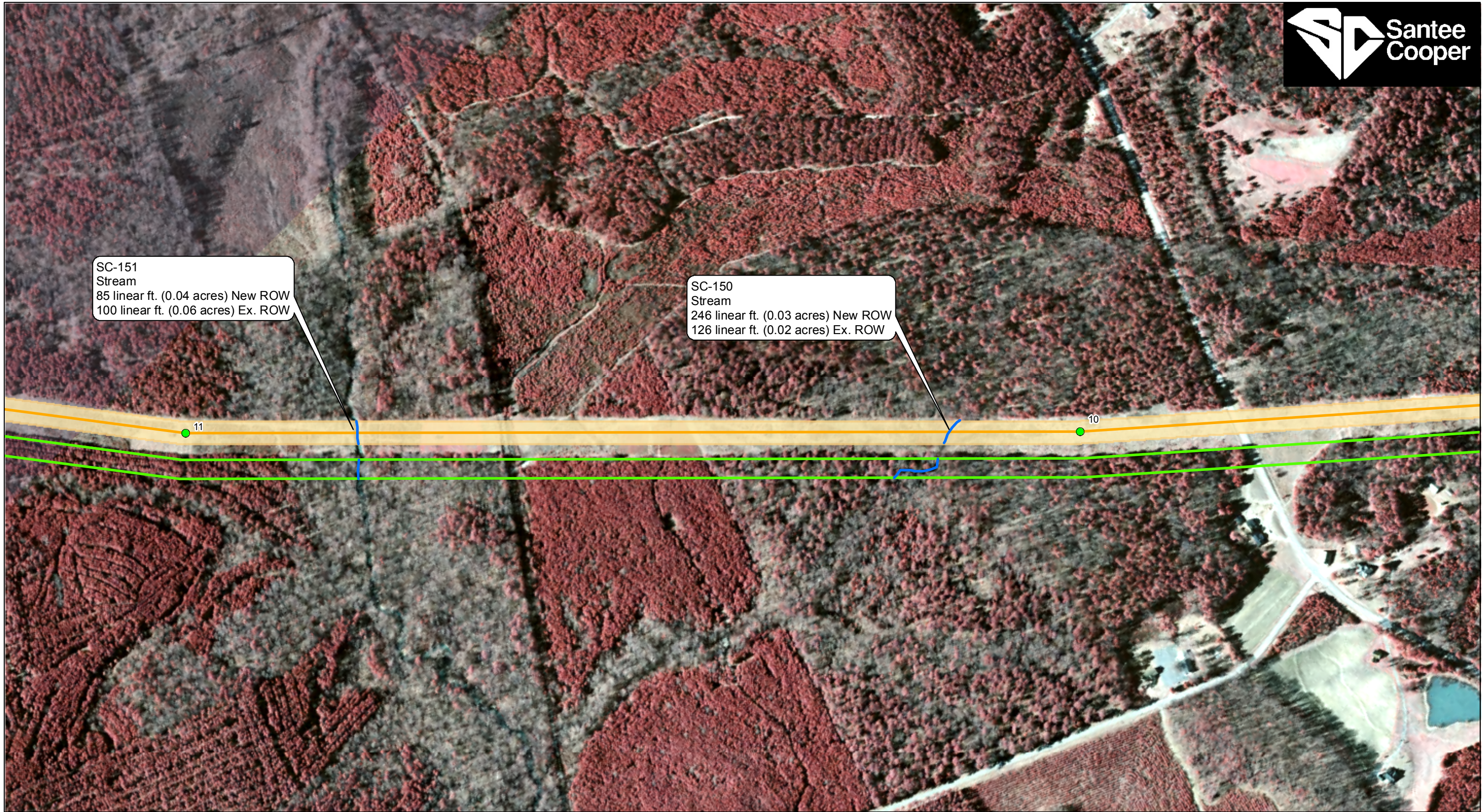
MACTEC

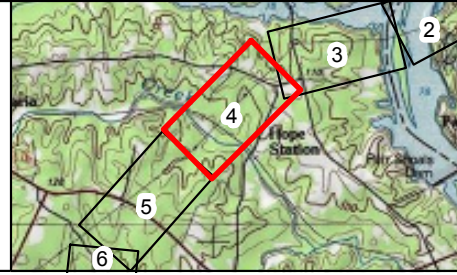
Created by: CGS
Checked By: KMR
Approved by: AWC
November 5, 2010

**Figure 2:
Jurisdictional Waters of the
US Within the Proposed
VCSNS-Varnville
Transmission Corridor
Sheet 2**

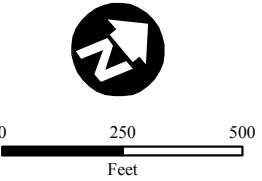




<p>LEGEND</p> <ul style="list-style-type: none"> ● Point of Intercept ● Data Point ~ Stream ~ Waters of the US — Varnville Line ☐ Open Water ☐ Wetland ☐ New ROW Area ☐ Existing ROW 	<p>NOTE: This map represents an approximation of wetland boundaries on the site by Mactec Engineering and Consulting Inc. This map is based on limited on-site field observations and available maps, and is subject to change following a full delineation and verification by the U.S. Army Corps of Engineers (USACE). This map should be used for preliminary planning purposes only.</p>	<p>0 250 500 Feet</p> <p>Aerial Source: SCDNR 2006</p>		<p>MACTEC</p> <p>Created by: CGS Checked By: KMR Approved by: AWC November 5, 2010</p>	<p>Figure 2: Jurisdictional Waters of the US Within the Proposed VCSNS-Varnville Transmission Corridor Sheet 3</p>
--	---	--	---	---	---

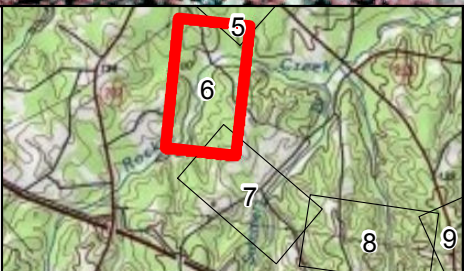


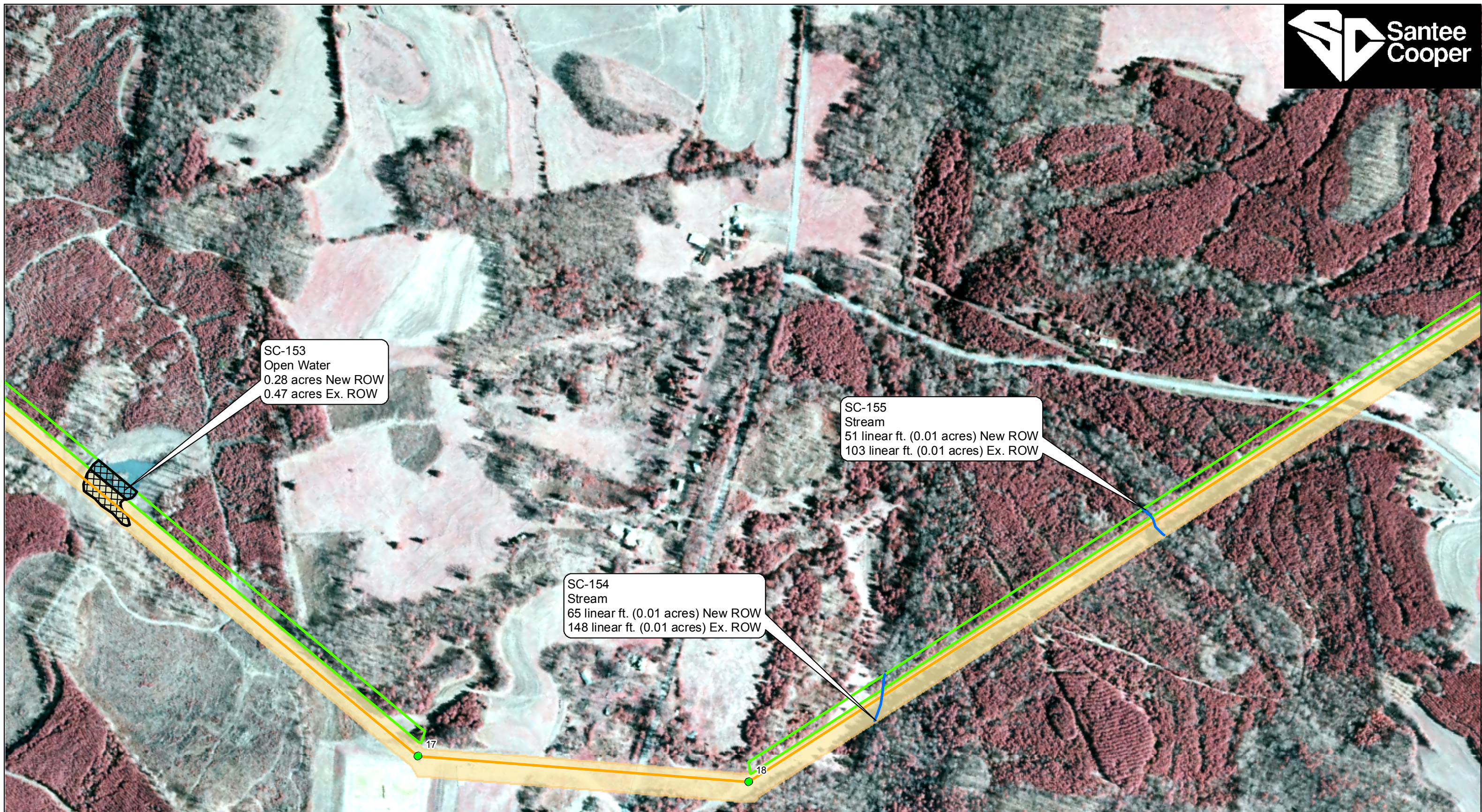
<p>LEGEND</p> <ul style="list-style-type: none"> ● Point of Intercept ● Data Point ~ Stream ~ Waters of the US — Varnville Line Open Water Wetland New ROW Area Existing ROW 	<p>NOTE: This map represents an approximation of wetland boundaries on the site by Mactec Engineering and Consulting Inc. This map is based on limited on-site field observations and available maps, and is subject to change following a full delineation and verification by the U.S. Army Corps of Engineers (USACE). This map should be used for preliminary planning purposes only.</p>	<p>0 250 500 Feet</p> <p>Aerial Source: SCDNR 2006</p>		<p>MACTEC</p> <p>Created by: CGS Checked By: KMR Approved by: AWC October 3, 2010</p>	<p>Figure 2: Jurisdictional Waters of the US Within the Proposed VCSNS-Varnville Transmission Corridor Sheet 4</p>
--	---	--	---	--	---




<p>LEGEND</p> <ul style="list-style-type: none"> ● Point of Intercept ○ Data Point ~ Stream ~ Waters of the US — Varnville Line ☐ Open Water ☐ Wetland ☐ New ROW Area ☐ Existing ROW 	<p>NOTE: This map represents an approximation of wetland boundaries on the site by Mactec Engineering and Consulting Inc. This map is based on limited on-site field observations and available maps, and is subject to change following a full delineation and verification by the U.S. Army Corps of Engineers (USACE). This map should be used for preliminary planning purposes only.</p>	 <p>Aerial Source: SCDNR 2006</p>		 <p>Created by: CGS Checked By: KMR Approved by: AWC October 3, 2010</p>	<p>Figure 2: Jurisdictional Waters of the US Within the Proposed VCSNS-Varnville Transmission Corridor Sheet 5</p>
--	---	--	---	---	---



<p>LEGEND</p> <ul style="list-style-type: none"> ● Point of Intercept ● Data Point ~ Stream ~ Waters of the US — Varnville Line Open Water Wetland New ROW Area Existing ROW 	<p>NOTE: This map represents an approximation of wetland boundaries on the site by Mactec Engineering and Consulting Inc. This map is based on limited on-site field observations and available maps, and is subject to change following a full delineation and verification by the U.S. Army Corps of Engineers (USACE). This map should be used for preliminary planning purposes only.</p>	<p>0 250 500 Feet</p> <p>Aerial Source: SCDNR 2006</p>		<p>MACTEC</p> <p>Created by: CGS Checked By: KMR Approved by: AWC November 5, 2010</p>	<p>Figure 2: Jurisdictional Waters of the US Within the Proposed VCSNS-Varnville Transmission Corridor Sheet 6</p>
--	---	--	---	---	---



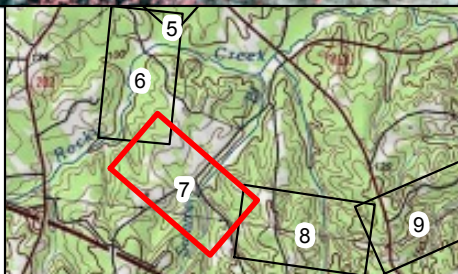
LEGEND

● Point of Intercept	 Open Water
● Data Point	 Wetland
 Stream	 New ROW Area
 Waters of the US	 Existing ROW
 Varnville Line	

NOTE: This map represents an approximation of wetland boundaries on the site by Mactec Engineering and Consulting Inc. This map is based on limited on-site field observations and available maps, and is subject to change following a full delineation and verification by the U.S. Army Corps of Engineers (USACE). This map should be used for preliminary planning purposes only.

0 250 500
Feet

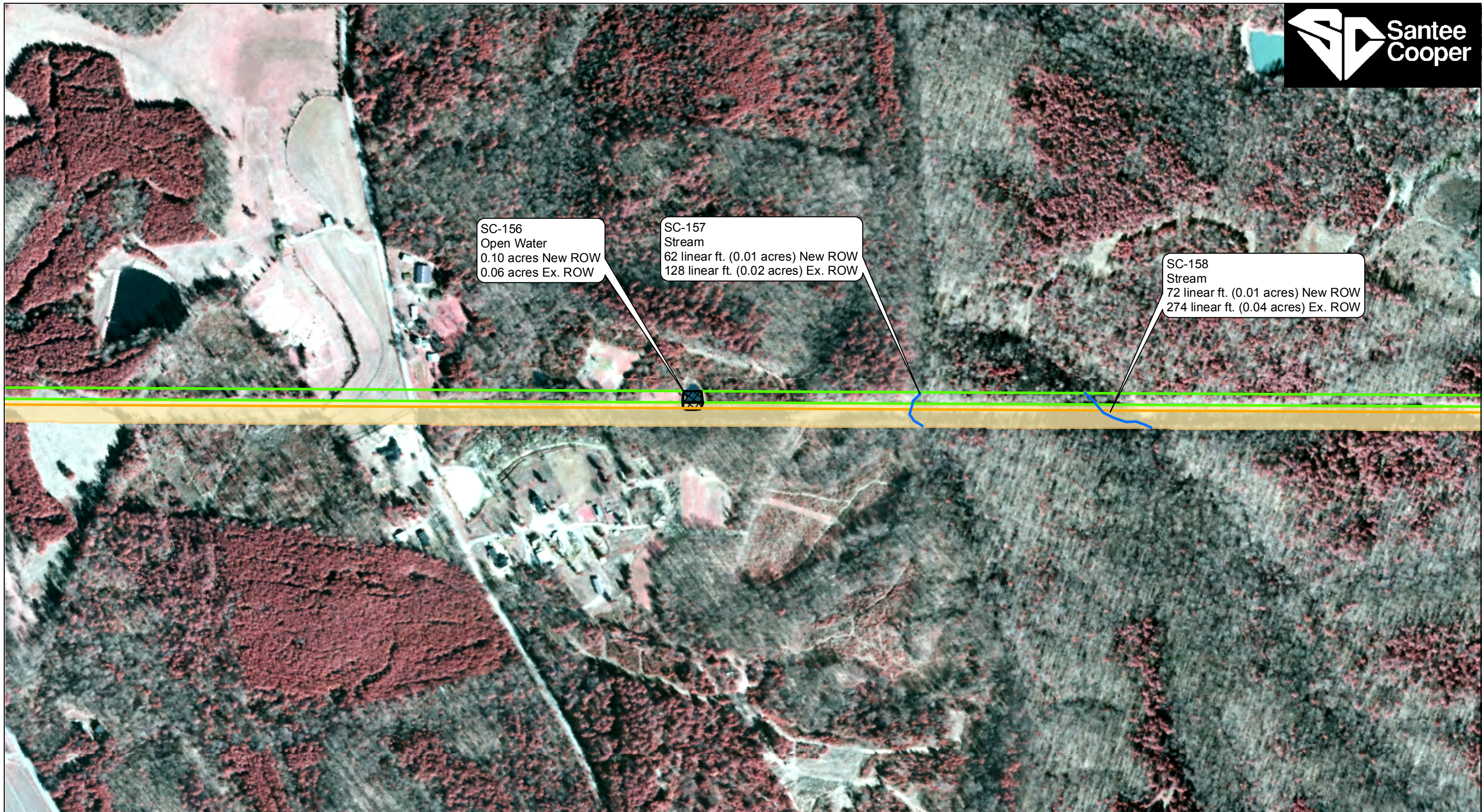
Aerial Source: SCDNR 2006

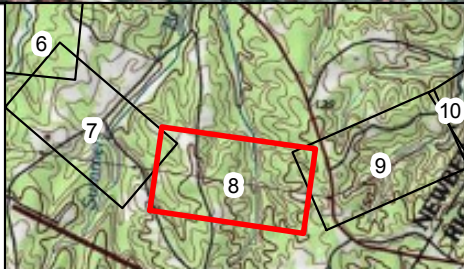


MACTEC

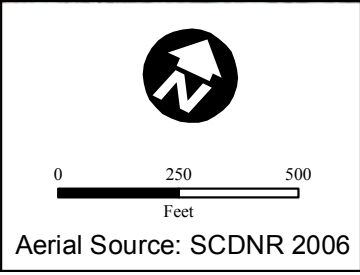
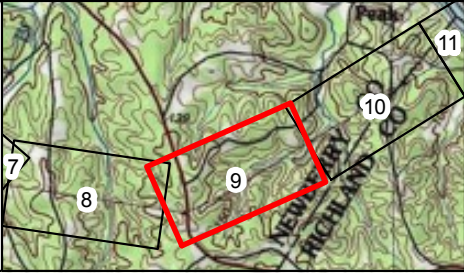
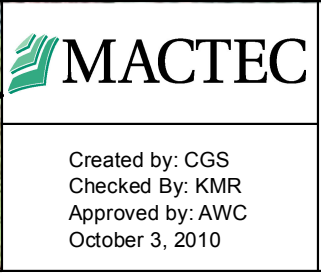
Created by: CGS
Checked By: KMR
Approved by: AWC
October 3, 2010

**Figure 2:
Jurisdictional Waters of the
US Within the Proposed
VCSNS-Varnville
Transmission Corridor
Sheet 7**

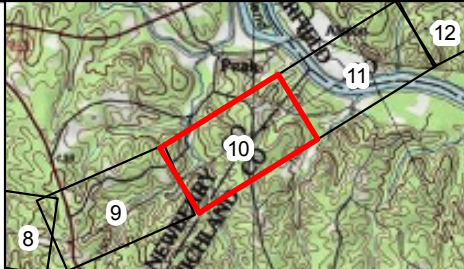


<p>LEGEND</p> <ul style="list-style-type: none"> ● Point of Intercept ○ Data Point ~ Stream ~ Waters of the US — Varnville Line ⊗ Open Water ⊗ Wetland □ New ROW Area □ Existing ROW 	<p>NOTE: This map represents an approximation of wetland boundaries on the site by Mactec Engineering and Consulting Inc. This map is based on limited on-site field observations and available maps, and is subject to change following a full delineation and verification by the U.S. Army Corps of Engineers (USACE). This map should be used for preliminary planning purposes only.</p>	<p>0 250 500 Feet</p> <p>Aerial Source: SCDNR 2006</p>		<p>MACTEC</p> <p>Created by: CGS Checked By: KMR Approved by: AWC October 3, 2010</p>	<p>Figure 2: Jurisdictional Waters of the US Within the Proposed VCSNS-Varnville Transmission Corridor Sheet 8</p>
--	---	--	---	--	---

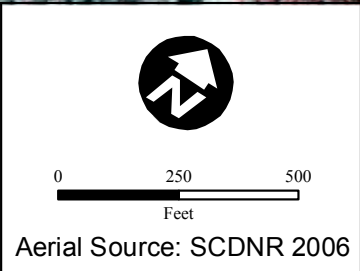
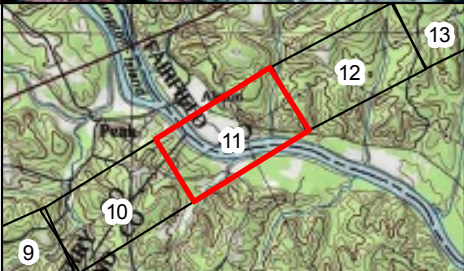



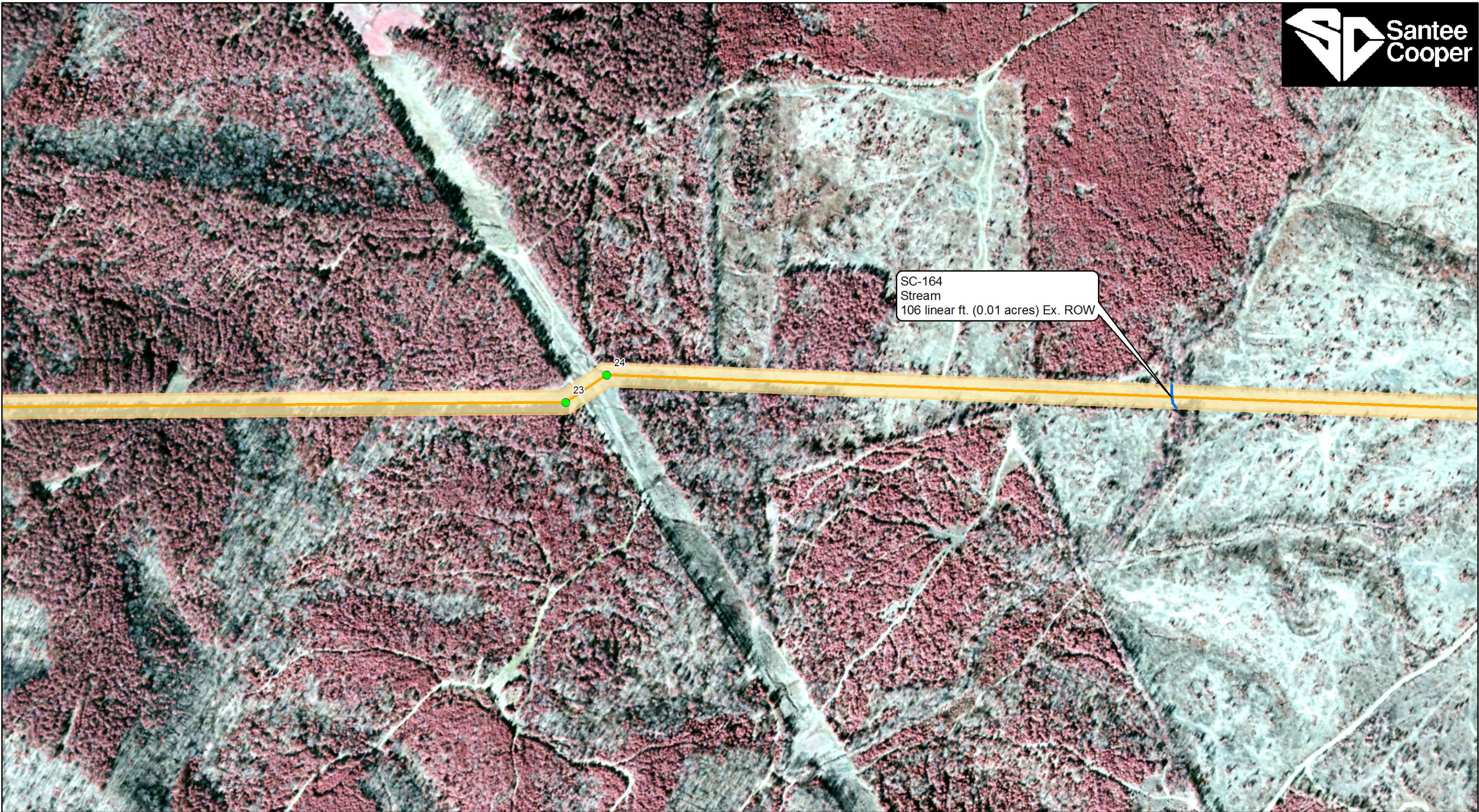
<p>LEGEND</p> <ul style="list-style-type: none"> ● Point of Intercept ● Data Point ~ Stream ~ Waters of the US — Varnville Line Open Water Wetland New ROW Area Existing ROW 	<p>NOTE: This map represents an approximation of wetland boundaries on the site by Mactec Engineering and Consulting Inc. This map is based on limited on-site field observations and available maps, and is subject to change following a full delineation and verification by the U.S. Army Corps of Engineers (USACE). This map should be used for preliminary planning purposes only.</p>	 <p>Aerial Source: SCDNR 2006</p>		 <p>Created by: CGS Checked By: KMR Approved by: AWC October 3, 2010</p>	<p>Figure 2: Jurisdictional Waters of the US Within the Proposed VCSNS-Varnville Transmission Corridor Sheet 9</p>
--	---	--	---	---	--

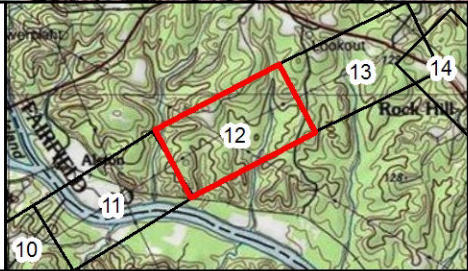


<p>LEGEND</p> <ul style="list-style-type: none"> ● Point of Intercept ● Data Point ~ Stream ~ Waters of the US — Varnville Line Open Water Wetland New ROW Area Existing ROW 	<p>NOTE: This map represents an approximation of wetland boundaries on the site by Mactec Engineering and Consulting Inc. This map is based on limited on-site field observations and available maps, and is subject to change following a full delineation and verification by the U.S. Army Corps of Engineers (USACE). This map should be used for preliminary planning purposes only.</p>	<p>0 250 500 Feet</p> <p>Aerial Source: SCDNR 2006</p>		<p>MACTEC</p> <p>Created by: CGS Checked By: KMR Approved by: AWC October 3, 2010</p>	<p>Figure 2: Jurisdictional Waters of the US Within the Proposed VCSNS-Varnville Transmission Corridor Sheet 10</p>
--	---	--	---	--	--



<p>LEGEND</p> <ul style="list-style-type: none"> ● Point of Intercept ● Data Point ~ Stream ~ Waters of the US — Varnville Line ⊗ Open Water ⊗ Wetland □ New ROW Area □ Existing ROW 	<p>NOTE: This map represents an approximation of wetland boundaries on the site by Mactec Engineering and Consulting Inc. This map is based on limited on-site field observations and available maps, and is subject to change following a full delineation and verification by the U.S. Army Corps of Engineers (USACE). This map should be used for preliminary planning purposes only.</p>	 <p>Aerial Source: SCDNR 2006</p>		 <p>Created by: CGS Checked By: KMR Approved by: AWC October 3, 2010</p>	<p>Figure 2: Jurisdictional Waters of the US Within the Proposed VCSNS-Varnville Transmission Corridor Sheet 11</p>
--	---	--	---	---	--





<p>LEGEND</p> <ul style="list-style-type: none"> ● Point of Intercept ● Data Point ~ Stream ~ Waters of the US — Varnville Line Open Water Wetland New ROW Area Existing ROW 	<p>NOTE: This map represents an approximation of wetland boundaries on the site by Mactec Engineering and Consulting Inc. This map is based on limited on-site field observations and available maps, and is subject to change following a full delineation and verification by the U.S. Army Corps of Engineers (USACE). This map should be used for preliminary planning purposes only.</p>	<p>0 250 500 Feet</p> <p>Aerial Source: SCDNR 2006</p>		<p>MACTEC</p> <p>Created by: CGS Checked By: KMR Approved by: AWC October 3, 2010</p>	<p>Figure 2: Jurisdictional Waters of the US Within the Proposed VCSNS-Varnville Transmission Corridor Sheet 12</p>
--	---	--	---	--	---

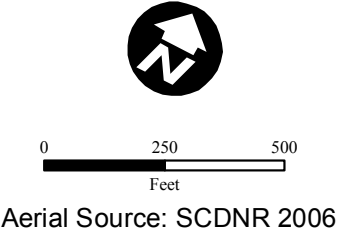
SC-165 - Cont. on Next Sheet
Stream
89 linear ft. (0.01 acres) New ROW
133 linear ft. (0.02 acres) Ex. ROW



LEGEND

- Point of Intercept
- Data Point
- ~ Stream
- ~ Waters of the US
- Varnville Line
-  Open Water
-  Wetland
- New ROW Area
- Existing ROW

NOTE: This map represents an approximation of wetland boundaries on the site by Mactec Engineering and Consulting Inc. This map is based on limited on-site field observations and available maps, and is subject to change following a full delineation and verification by the U.S. Army Corps of Engineers (USACE). This map should be used for preliminary planning purposes only.

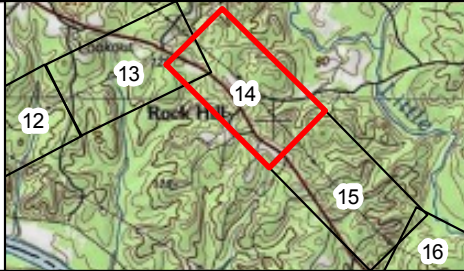


MACTEC

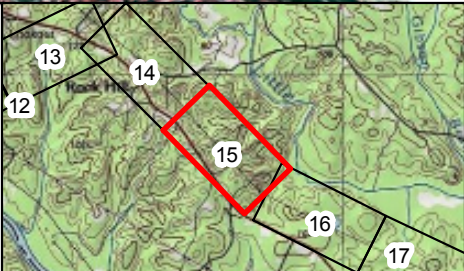
Created by: CGS
Checked By: KMR
Approved by: AWC
October 3, 2010

**Figure 2:
Jurisdictional Waters of the
US Within the Proposed
VCSNS-Varnville
Transmission Corridor
Sheet 13**



<p>LEGEND</p> <ul style="list-style-type: none"> ● Point of Intercept ● Data Point ~ Stream ~ Waters of the US — Varnville Line Open Water Wetland New ROW Area Existing ROW 	<p>NOTE: This map represents an approximation of wetland boundaries on the site by Mactec Engineering and Consulting Inc. This map is based on limited on-site field observations and available maps, and is subject to change following a full delineation and verification by the U.S. Army Corps of Engineers (USACE). This map should be used for preliminary planning purposes only.</p>	<p>0 250 500 Feet Aerial Source: SCDNR 2006</p>		<p>MACTEC</p> <p>Created by: CGS Checked By: KMR Approved by: AWC October 3, 2010</p>	<p>Figure 2: Jurisdictional Waters of the US Within the Proposed VCSNS-Varnville Transmission Corridor Sheet 14</p>
--	---	---	---	--	--



<p>LEGEND</p> <ul style="list-style-type: none"> ● Point of Intercept ● Data Point ~ Stream ~ Waters of the US — Varnville Line Open Water Wetland New ROW Area Existing ROW 	<p>NOTE: This map represents an approximation of wetland boundaries on the site by Mactec Engineering and Consulting Inc. This map is based on limited on-site field observations and available maps, and is subject to change following a full delineation and verification by the U.S. Army Corps of Engineers (USACE). This map should be used for preliminary planning purposes only.</p>	<p>0 250 500 Feet</p> <p>Aerial Source: SCDNR 2006</p>		<p>MACTEC</p> <p>Created by: CGS Checked By: KMR Approved by: AWC October 3, 2010</p>	<p>Figure 2: Jurisdictional Waters of the US Within the Proposed VCSNS-Varnville Transmission Corridor</p> <p>Sheet 15</p>
--	---	--	---	--	---