



VC Summer Plant Site Not Included

<p>Legend</p> <ul style="list-style-type: none">DP (Data Point)StreamRight-of-WayVCS Site BoundaryOpen WaterWetland	<p>Note:</p> <p>1. Existing jurisdictional wetland, stream, and open water boundaries have been delineated by Palmetto Environmental Consulting, Inc and mapped by Pike Electric, Inc; however, until a jurisdictional determination has been completed by the US Army Corps of Engineers, these boundaries should be used for preliminary planning purposes only.</p> <p>2. All acreages and distances pertain to that contained within the Right-of-Way.</p>	<p>0 200 400 800 Feet</p> <p>Not to Scale</p>	<p>VC Summer Nuclear Station</p>	<p>SCE&G A SCANA COMPANY</p>	<p>Jurisdictional Waters of the US within the Proposed VCS - St. George #1 and VCS - Lake Murray #2 Transmission Corridor</p> <p>Sheet 01</p>
---	--	---	----------------------------------	---	--

VC Summer Plant Site Not Included

SCE-114
Stream
121 linear ft.(0.02acres)


SCE-114.1
Stream
375 linear ft.(0.05acres)


SCE-114.1
Wetland
1.16 acres


SCE-115
Wetland
1.01 acres


SCE-116
Stream
143 linear ft.(0.02acres)


Legend


 DP (Data Point)

 Open Water


 Stream


 Wetland

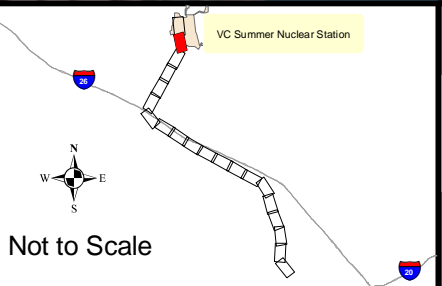
 Right-of-Way

 VCS Site Boundary

Note:
1. Existing jurisdictional wetland, stream, and open water boundaries have been delineated by Palmetto Environmental Consulting, Inc and mapped by Pike Electric, Inc; however, until a jurisdictional determination has been completed by the US Army Corps of Engineers, these boundaries should be used for preliminary planning purposes only.
2. All acreages and distances pertain to that contained within the Right-of-Way.







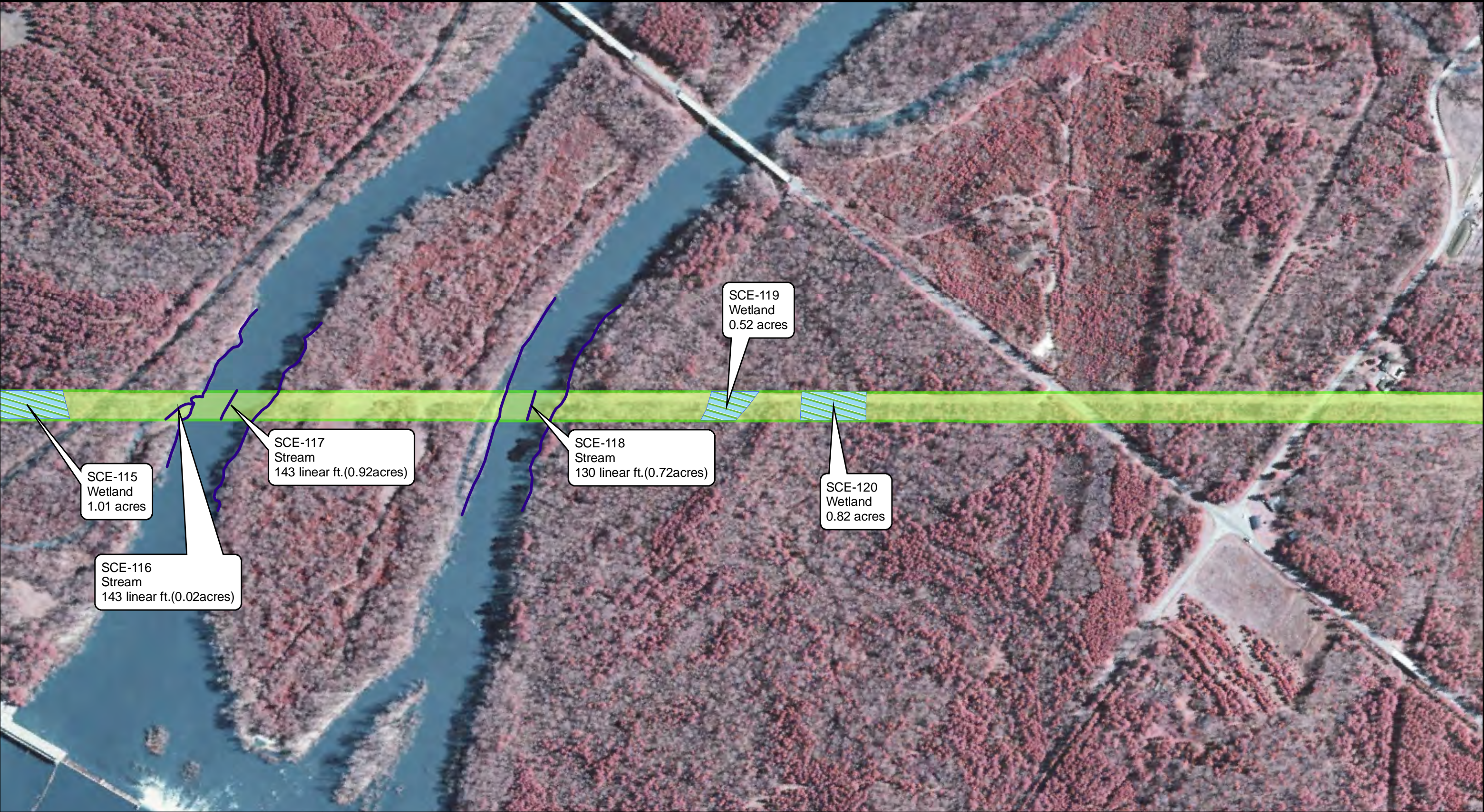
VC Summer Nuclear Station

Not to Scale

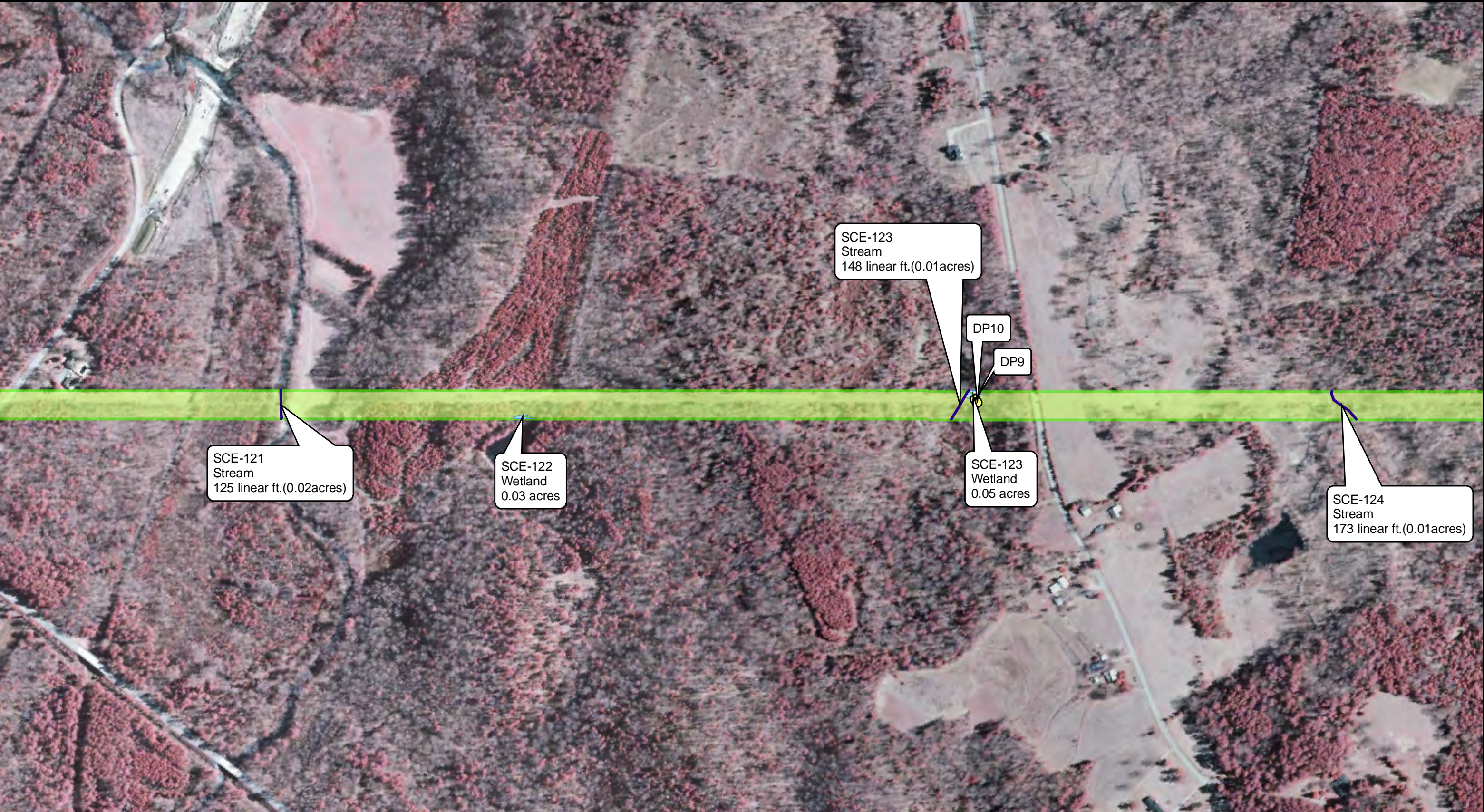


Jurisdictional Waters of the US within the Proposed VCS - St. George #1 and VCS - Lake Murray #2 Transmission Corridor

Sheet 02



<p>Legend</p> <ul style="list-style-type: none">DP (Data Point)StreamRight-of-WayVCS Site BoundaryOpen WaterWetland	<p>Note:</p> <p>1. Existing jurisdictional wetland, stream, and open water boundaries have been delineated by Palmetto Environmental Consulting, Inc and mapped by Pike Electric, Inc; however, until a jurisdictional determination has been completed by the US Army Corps of Engineers, these boundaries should be used for preliminary planning purposes only.</p> <p>2. All acreages and distances pertain to that contained within the Right-of-Way.</p>	<p>0 200 400 800 Feet</p> <p>Not to Scale</p>	<p>VC Summer Nuclear Station</p>	<p>SCE&G A SCANA COMPANY</p>	<p>Jurisdictional Waters of the US within the Proposed VCS - St. George #1 and VCS - Lake Murray #2 Transmission Corridor</p> <p>Sheet 03</p>
---	--	---	----------------------------------	---	--



Legend

DP (Data Point)

Stream

Right-of-Way

VCS Site Boundary

Open Water

Wetland

Note:

1. Existing jurisdictional wetland, stream, and open water boundaries have been delineated by Palmetto Environmental Consulting, Inc and mapped by Pike Electric, Inc; however, until a jurisdictional determination has been completed by the US Army Corps of Engineers, these boundaries should be used for preliminary planning purposes only.

2. All acreages and distances pertain to that contained within the Right-of-Way.

0

200

400

800

Feet

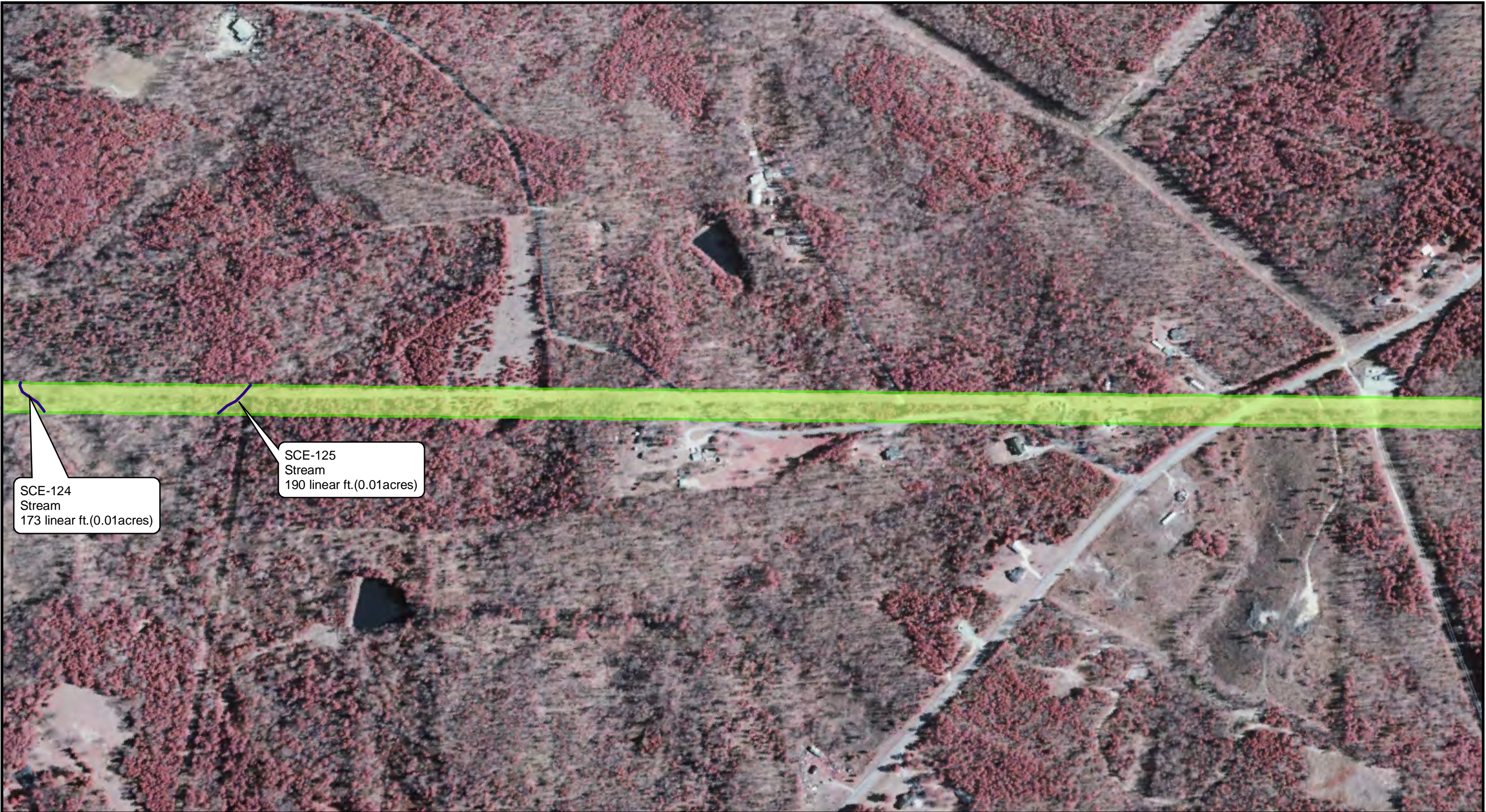
VC Summer Nuclear Station

Not to Scale

Jurisdictional Waters of the US within the Proposed VCS - St. George #1 and VCS - Lake Murray #2 Transmission Corridor

Sheet 04

R:\FPS\PROJECTS\SCE&G\VC Summer_T-lines_Following_Existing_ROW\2010\Siting\ArcMaps\JDI\SG1 LM2 Strip Maps 092210.mxd



<p>Legend</p> <ul style="list-style-type: none">DP (Data Point)StreamRight-of-WayVCS Site BoundaryOpen WaterWetland	<p>Note:</p> <p>1. Existing jurisdictional wetland, stream, and open water boundaries have been delineated by Palmetto Environmental Consulting, Inc and mapped by Pike Electric, Inc; however, until a jurisdictional determination has been completed by the US Army Corps of Engineers, these boundaries should be used for preliminary planning purposes only.</p> <p>2. All acreages and distances pertain to that contained within the Right-of-Way.</p>	<p>0 200 400 800 Feet</p>	<p>VC Summer Nuclear Station</p>		<p>Jurisdictional Waters of the US within the Proposed VCS - St. George #1 and VCS - Lake Murray #2 Transmission Corridor</p> <p>Sheet 05</p>
---	--	---------------------------	----------------------------------	--	--



<p>Legend</p> <ul style="list-style-type: none">DP (Data Point)StreamRight-of-WayVCS Site BoundaryOpen WaterWetland	<p>Note:</p> <p>1. Existing jurisdictional wetland, stream, and open water boundaries have been delineated by Palmetto Environmental Consulting, Inc and mapped by Pike Electric, Inc; however, until a jurisdictional determination has been completed by the US Army Corps of Engineers, these boundaries should be used for preliminary planning purposes only.</p> <p>2. All acreages and distances pertain to that contained within the Right-of-Way.</p>	<p>0 200 400 800 Feet</p>	<p>VC Summer Nuclear Station</p> <p>Not to Scale</p>		<p>Jurisdictional Waters of the US within the Proposed VCS - St. George #1 and VCS - Lake Murray #2 Transmission Corridor</p> <p>Sheet 06</p>
---	--	---------------------------	--	--	--



Legend

DP (Data Point)

Stream

Right-of-Way

VCS Site Boundary

Open Water

Wetland

Note:

1. Existing jurisdictional wetland, stream, and open water boundaries have been delineated by Palmetto Environmental Consulting, Inc and mapped by Pike Electric, Inc; however, until a jurisdictional determination has been completed by the US Army Corps of Engineers, these boundaries should be used for preliminary planning purposes only.

2. All acreages and distances pertain to that contained within the Right-of-Way.

0

200

400

800

Feet

VC Summer Nuclear Station

Not to Scale

SCE&G
A SCANA COMPANY

Jurisdictional Waters of the US within the Proposed VCS - St. George #1 and VCS - Lake Murray #2 Transmission Corridor

Sheet 07








<p>Legend</p> <ul style="list-style-type: none">DP (Data Point)StreamRight-of-WayVCS Site BoundaryOpen WaterWetland	<p>Note:</p> <p>1. Existing jurisdictional wetland, stream, and open water boundaries have been delineated by Palmetto Environmental Consulting, Inc and mapped by Pike Electric, Inc; however, until a jurisdictional determination has been completed by the US Army Corps of Engineers, these boundaries should be used for preliminary planning purposes only.</p> <p>2. All acreages and distances pertain to that contained within the Right-of-Way.</p>	<p>0 200 400 800 Feet</p> <p>Not to Scale</p>	<p>VC Summer Nuclear Station</p>	<p>SCE&G A SCANA COMPANY</p>	<p>Jurisdictional Waters of the US within the Proposed VCS - St. George #1 and VCS - Lake Murray #2 Transmission Corridor</p> <p>Sheet 08</p>
---	--	---	----------------------------------	---	--

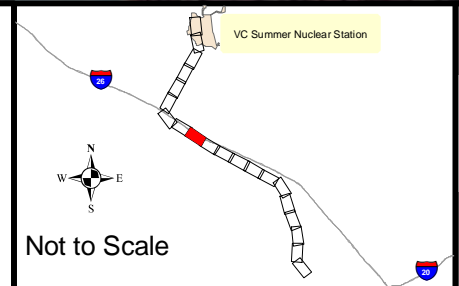
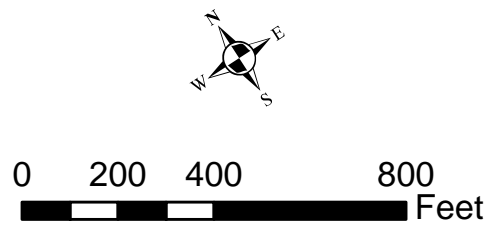


SCE-133
Stream
96 linear ft.(0.01acres)

Legend

- | | |
|---|--|
|  DP (Data Point) |  Open Water |
|  Stream |  Wetland |
|  Right-of-Way | |
|  VCS Site Boundary | |

Note:
1. Existing jurisdictional wetland, stream, and open water boundaries have been delineated by Palmetto Environmental Consulting, Inc and mapped by Pike Electric, Inc; however, until a jurisdictional determination has been completed by the US Army Corps of Engineers, these boundaries should be used for preliminary planning purposes only.
2. All acreages and distances pertain to that contained within the Right-of-Way.



Jurisdictional Waters of the US within the Proposed VCS - St. George #1 and VCS - Lake Murray #2 Transmission Corridor
Sheet 09



<p>Legend</p> <ul style="list-style-type: none"> DP (Data Point) Stream Right-of-Way VCS Site Boundary Open Water Wetland 	<p>Note:</p> <p>1. Existing jurisdictional wetland, stream, and open water boundaries have been delineated by Palmetto Environmental Consulting, Inc and mapped by Pike Electric, Inc; however, until a jurisdictional determination has been completed by the US Army Corps of Engineers, these boundaries should be used for preliminary planning purposes only.</p> <p>2. All acreages and distances pertain to that contained within the Right-of-Way.</p>		<p>Not to Scale</p>		<p>Jurisdictional Waters of the US within the Proposed VCS - St. George #1 and VCS - Lake Murray #2 Transmission Corridor</p> <p>Sheet 10</p>
--	---	--	---------------------	--	--



<p>Legend</p> <ul style="list-style-type: none">DP (Data Point)StreamRight-of-WayVCS Site BoundaryOpen WaterWetland	<p>Note:</p> <p>1. Existing jurisdictional wetland, stream, and open water boundaries have been delineated by Palmetto Environmental Consulting, Inc and mapped by Pike Electric, Inc; however, until a jurisdictional determination has been completed by the US Army Corps of Engineers, these boundaries should be used for preliminary planning purposes only.</p> <p>2. All acreages and distances pertain to that contained within the Right-of-Way.</p>	<p>0 200 400 800 Feet</p>	<p>VC Summer Nuclear Station</p> <p>Not to Scale</p>		<p>Jurisdictional Waters of the US within the Proposed VCS - St. George #1 and VCS - Lake Murray #2 Transmission Corridor</p> <p>Sheet 11</p>
---	--	---------------------------	--	--	--



<p>Legend</p> <ul style="list-style-type: none">DP (Data Point)StreamRight-of-WayVCS Site BoundaryOpen WaterWetland	<p>Note:</p> <p>1. Existing jurisdictional wetland, stream, and open water boundaries have been delineated by Palmetto Environmental Consulting, Inc and mapped by Pike Electric, Inc; however, until a jurisdictional determination has been completed by the US Army Corps of Engineers, these boundaries should be used for preliminary planning purposes only.</p> <p>2. All acreages and distances pertain to that contained within the Right-of-Way.</p>	<p>0 200 400 800 Feet</p> <p>Not to Scale</p>	<p>VC Summer Nuclear Station</p>	<p>SCE&G A SCANA COMPANY</p>	<p>Jurisdictional Waters of the US within the Proposed VCS - St. George #1 and VCS - Lake Murray #2 Transmission Corridor</p> <p>Sheet 12</p>
---	--	---	----------------------------------	---	--



<p>Legend</p> <ul style="list-style-type: none">DP (Data Point)StreamRight-of-WayVCS Site BoundaryOpen WaterWetland	<p>Note:</p> <p>1. Existing jurisdictional wetland, stream, and open water boundaries have been delineated by Palmetto Environmental Consulting, Inc and mapped by Pike Electric, Inc; however, until a jurisdictional determination has been completed by the US Army Corps of Engineers, these boundaries should be used for preliminary planning purposes only.</p> <p>2. All acreages and distances pertain to that contained within the Right-of-Way.</p>	<p>0 200 400 800 Feet</p> <p>Not to Scale</p>	<p>VC Summer Nuclear Station</p>		<p>Jurisdictional Waters of the US within the Proposed VCS - St. George #1 and VCS - Lake Murray #2 Transmission Corridor</p> <p>Sheet 13</p>
---	--	---	----------------------------------	--	--



Legend

DP (Data Point)

Open Water

Stream

Right-of-Way

VCS Site Boundary

Wetland

Note:

1. Existing jurisdictional wetland, stream, and open water boundaries have been delineated by Palmetto Environmental Consulting, Inc and mapped by Pike Electric, Inc; however, until a jurisdictional determination has been completed by the US Army Corps of Engineers, these boundaries should be used for preliminary planning purposes only.

2. All acreages and distances pertain to that contained within the Right-of-Way.

0200400800

Feet

Not to Scale

Jurisdictional Waters of the US within the Proposed VCS - St. George #1 and VCS - Lake Murray #2 Transmission Corridor

Sheet 14

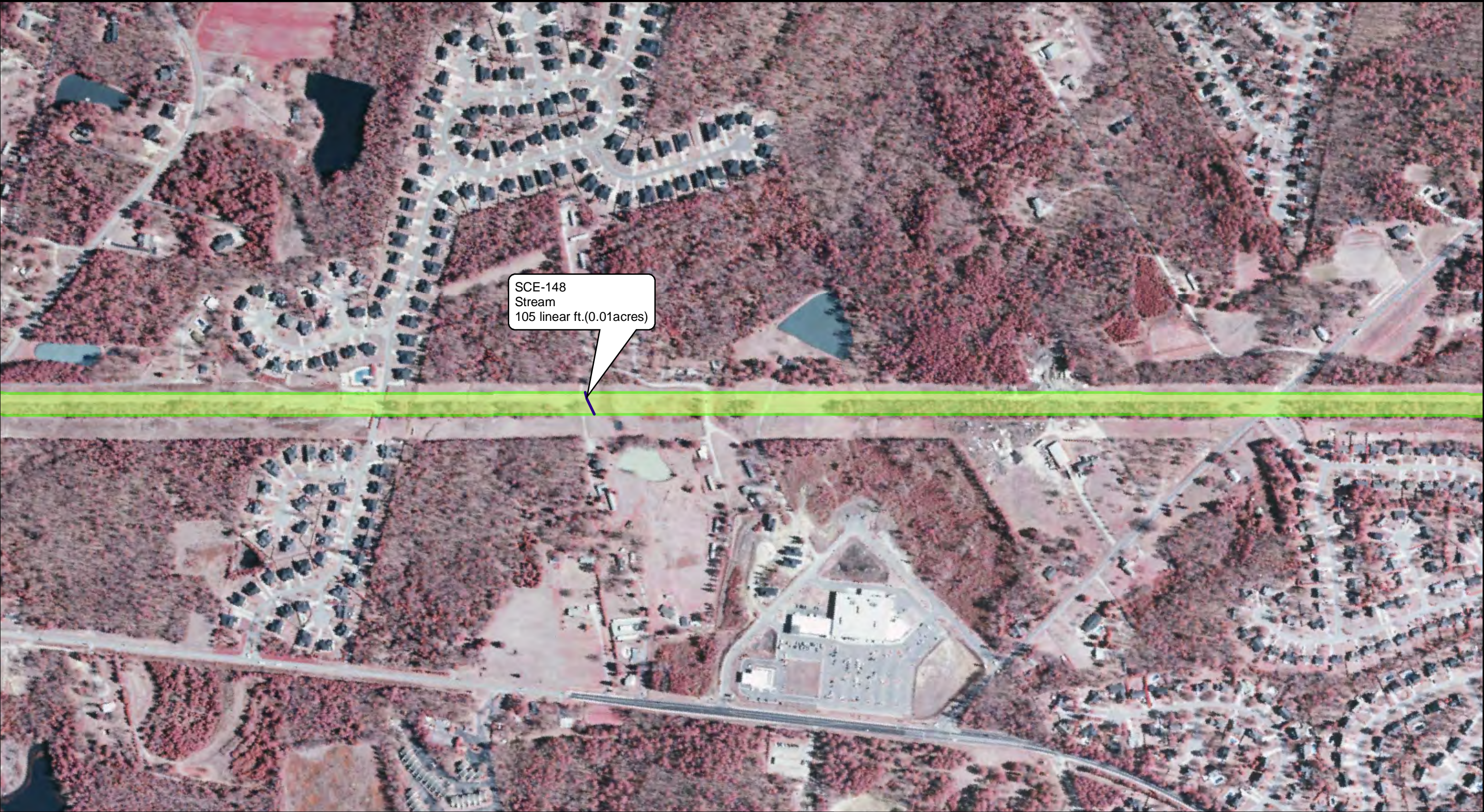
R:\FPS\PROJECTS\SCE&G\VC Summer_T-lines_Following_Existing_ROWs_2010\Siting\ArcMaps\JDI\SG1 LM2 Strip Maps 092210.mxd



<p>Legend</p> <ul style="list-style-type: none">DP (Data Point)StreamRight-of-WayVCS Site BoundaryOpen WaterWetland	<p>Note:</p> <p>1. Existing jurisdictional wetland, stream, and open water boundaries have been delineated by Palmetto Environmental Consulting, Inc and mapped by Pike Electric, Inc; however, until a jurisdictional determination has been completed by the US Army Corps of Engineers, these boundaries should be used for preliminary planning purposes only.</p> <p>2. All acreages and distances pertain to that contained within the Right-of-Way.</p>	<p>0 200 400 800 Feet</p> <p>Not to Scale</p>	<p>VC Summer Nuclear Station</p>	<p>SCE&G A SCANA COMPANY</p>	<p>Jurisdictional Waters of the US within the Proposed VCS - St. George #1 and VCS - Lake Murray #2 Transmission Corridor</p> <p>Sheet 15</p>
---	--	---	----------------------------------	---	--



<p>Legend</p> <ul style="list-style-type: none">DP (Data Point)StreamRight-of-WayVCS Site BoundaryOpen WaterWetland	<p>Note:</p> <p>1. Existing jurisdictional wetland, stream, and open water boundaries have been delineated by Palmetto Environmental Consulting, Inc and mapped by Pike Electric, Inc; however, until a jurisdictional determination has been completed by the US Army Corps of Engineers, these boundaries should be used for preliminary planning purposes only.</p> <p>2. All acreages and distances pertain to that contained within the Right-of-Way.</p>	<p>0 200 400 800 Feet</p> <p>Not to Scale</p>	<p>VC Summer Nuclear Station</p>		<p>Jurisdictional Waters of the US within the Proposed VCS - St. George #1 and VCS - Lake Murray #2 Transmission Corridor</p> <p>Sheet 16</p>
---	--	---	----------------------------------	--	--



Legend

DP (Data Point)

Stream

Right-of-Way

VCS Site Boundary

Open Water

Wetland

Note:

1. Existing jurisdictional wetland, stream, and open water boundaries have been delineated by Palmetto Environmental Consulting, Inc and mapped by Pike Electric, Inc; however, until a jurisdictional determination has been completed by the US Army Corps of Engineers, these boundaries should be used for preliminary planning purposes only.

2. All acreages and distances pertain to that contained within the Right-of-Way.

N

E

S

W

0200400800

Feet

N

E

S

W

Not to Scale

VC Summer Nuclear Station

SCE&G

A SCANA COMPANY

Jurisdictional Waters of the US within the Proposed VCS - St. George #1 and VCS - Lake Murray #2 Transmission Corridor

Sheet 17

R:\FPS\PROJECTS\SCE&G\VC Summer_T-lines_Following_Existing_ROW\2010\Siting\ArcMaps\JDI\SG1 LM2 Strip Maps 092210.mxd



<p>Legend</p> <ul style="list-style-type: none">DP (Data Point)StreamRight-of-WayVCS Site BoundaryOpen WaterWetland	<p>Note:</p> <p>1. Existing jurisdictional wetland, stream, and open water boundaries have been delineated by Palmetto Environmental Consulting, Inc and mapped by Pike Electric, Inc; however, until a jurisdictional determination has been completed by the US Army Corps of Engineers, these boundaries should be used for preliminary planning purposes only.</p> <p>2. All acreages and distances pertain to that contained within the Right-of-Way.</p>	<p>0 200 400 800 Feet</p> <p>Not to Scale</p>	<p>VC Summer Nuclear Station</p>	<p>SCE&G A SCANA COMPANY</p>	<p>Jurisdictional Waters of the US within the Proposed VCS - St. George #1 and VCS - Lake Murray #2 Transmission Corridor</p> <p>Sheet 18</p>
---	--	---	----------------------------------	---	--



Legend

DP (Data Point)

Stream

Right-of-Way

VCS Site Boundary

Open Water

Wetland

Note:

1. Existing jurisdictional wetland, stream, and open water boundaries have been delineated by Palmetto Environmental Consulting, Inc and mapped by Pike Electric, Inc; however, until a jurisdictional determination has been completed by the US Army Corps of Engineers, these boundaries should be used for preliminary planning purposes only.

2. All acreages and distances pertain to that contained within the Right-of-Way.

N

E

S

W

0200400800

Feet

N

E

S

W

Not to Scale

VC Summer Nuclear Station

SCE&G

A SCANA COMPANY

Jurisdictional Waters of the US within the Proposed VCS - St. George #1 and VCS - Lake Murray #2 Transmission Corridor

Sheet 19

R:\FPS\PROJECTS\SCE&G\VC Summer_T-lines_Following_Existing_ROW\2010\Siting\ArcMaps\JDI\SG1 LM2 Strip Maps 092210.mxd

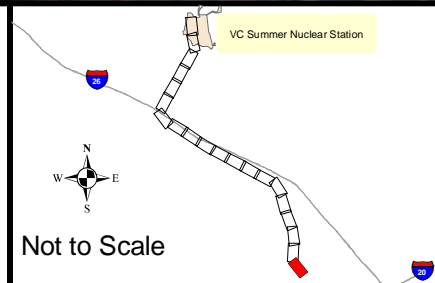
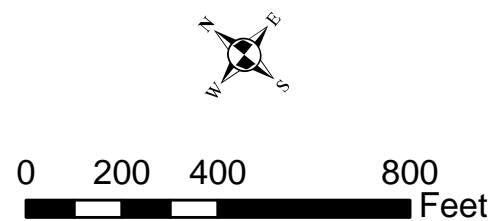


Legend

- DP (Data Point)
- Open Water
- Stream
- Wetland
- Right-of-Way
- VCS Site Boundary

Note:

- Existing jurisdictional wetland, stream, and open water boundaries have been delineated by Palmetto Environmental Consulting, Inc and mapped by Pike Electric, Inc; however, until a jurisdictional determination has been completed by the US Army Corps of Engineers, these boundaries should be used for preliminary planning purposes only.
- All acreages and distances pertain to that contained within the Right-of-Way.



**Jurisdictional Waters of the
US within the Proposed
VCS - St. George #1 and
VCS - Lake Murray #2
Transmission Corridor**

Sheet 20