

V. C. Summer Nuclear Station, Units 2 and 3  
COL Application  
Part 2, FSAR

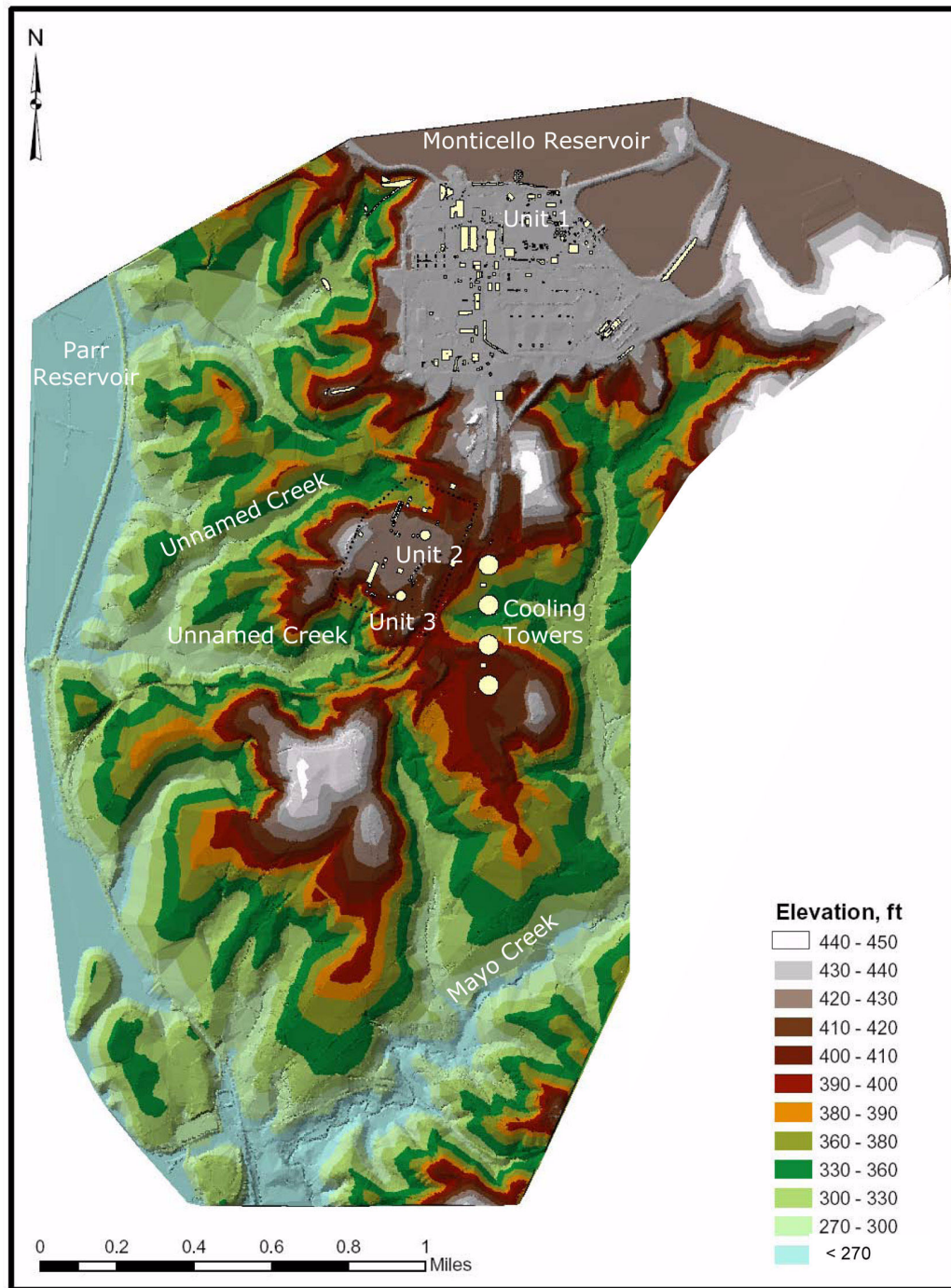
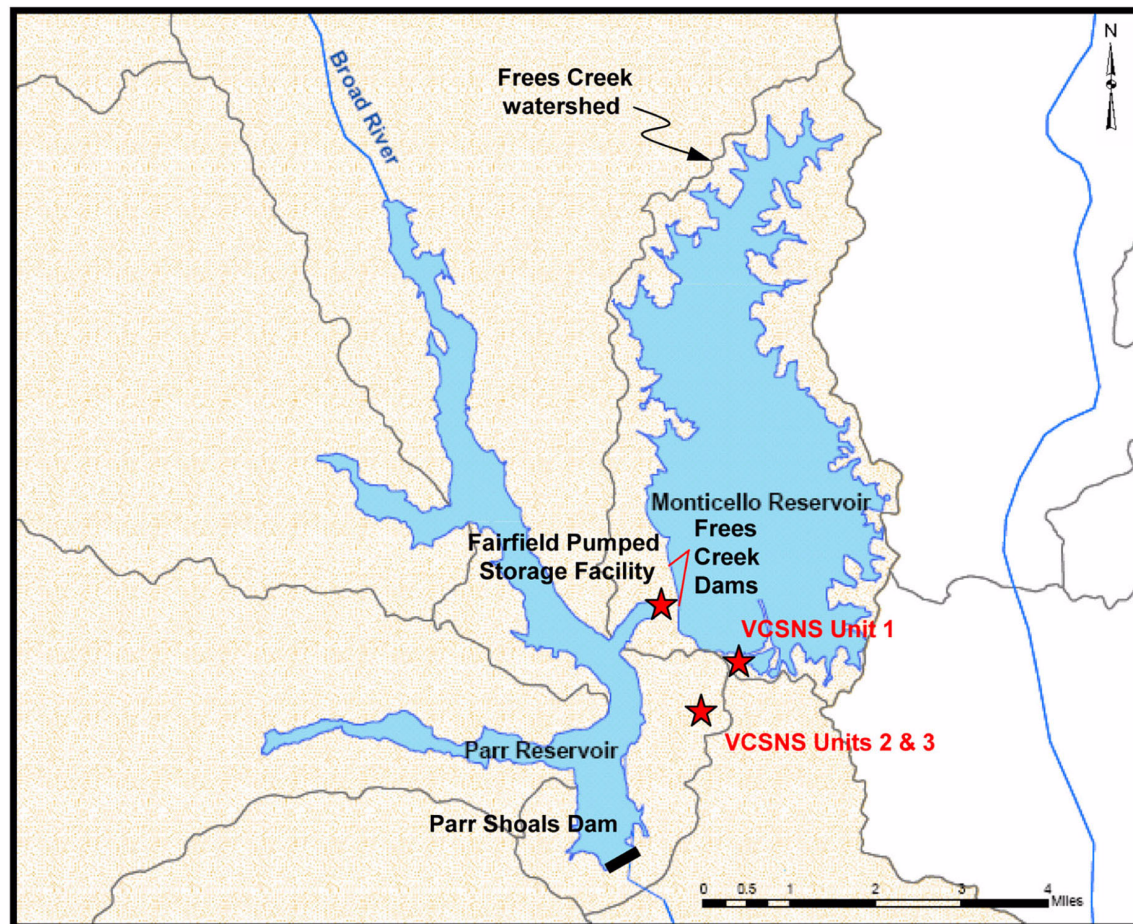


Figure 2.4-201. Topography of the Site of Units 2 and 3 and Vicinity

V. C. Summer Nuclear Station, Units 2 and 3  
COL Application  
Part 2, FSAR



Data sources:

1. USGS DEM files for Jenkinsville and Salem Crossroads
2. Area survey data from Glenn Associates Surveying, Inc
3. Recent satellite image of the Monticello Reservoir area

Figure 2.4-202. Map Showing Major Hydrologic Features at Plant Site

V. C. Summer Nuclear Station, Units 2 and 3  
COL Application  
Part 2, FSAR

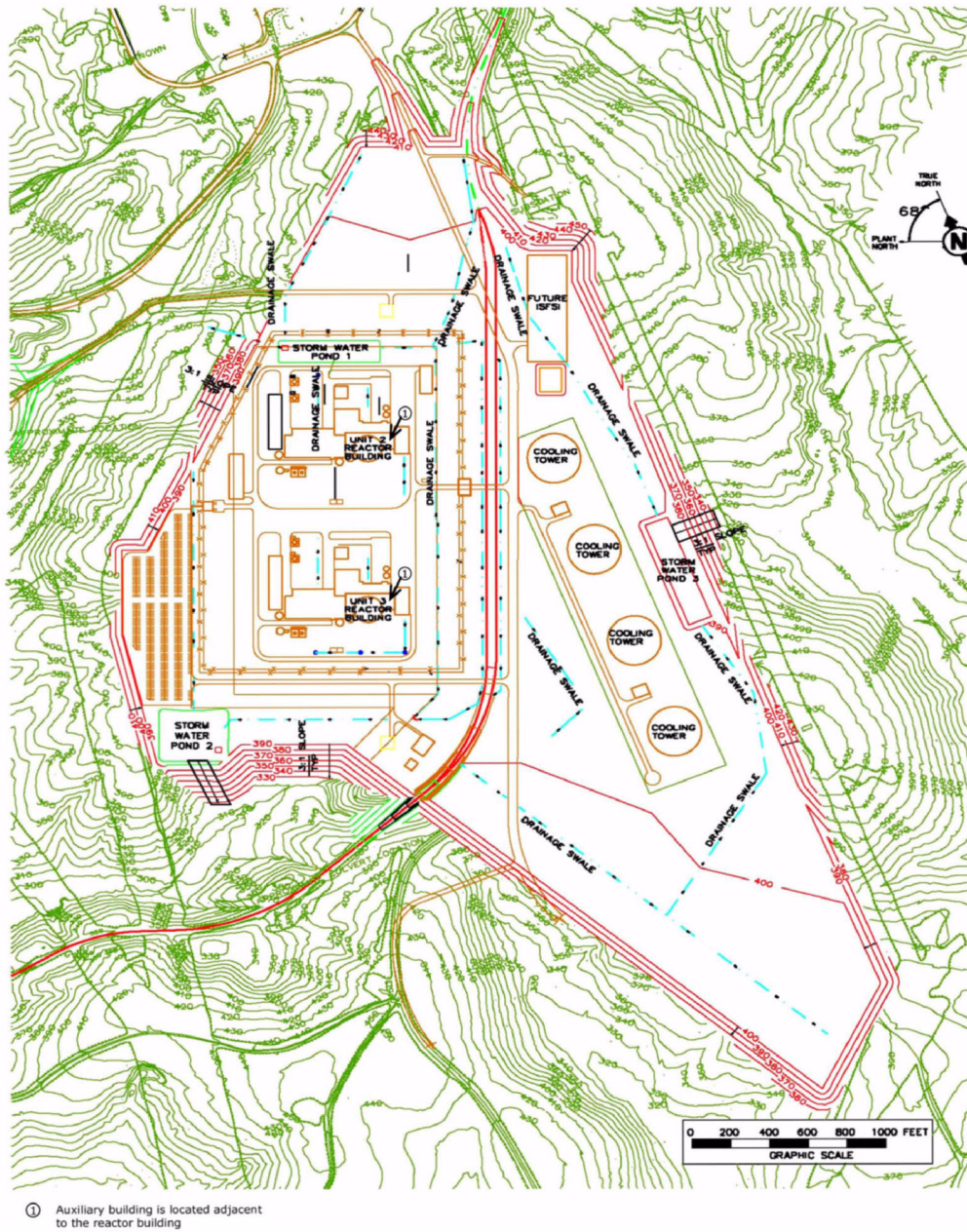


Figure 2.4-203. General Plant Site Layout

V. C. Summer Nuclear Station, Units 2 and 3  
COL Application  
Part 2, FSAR

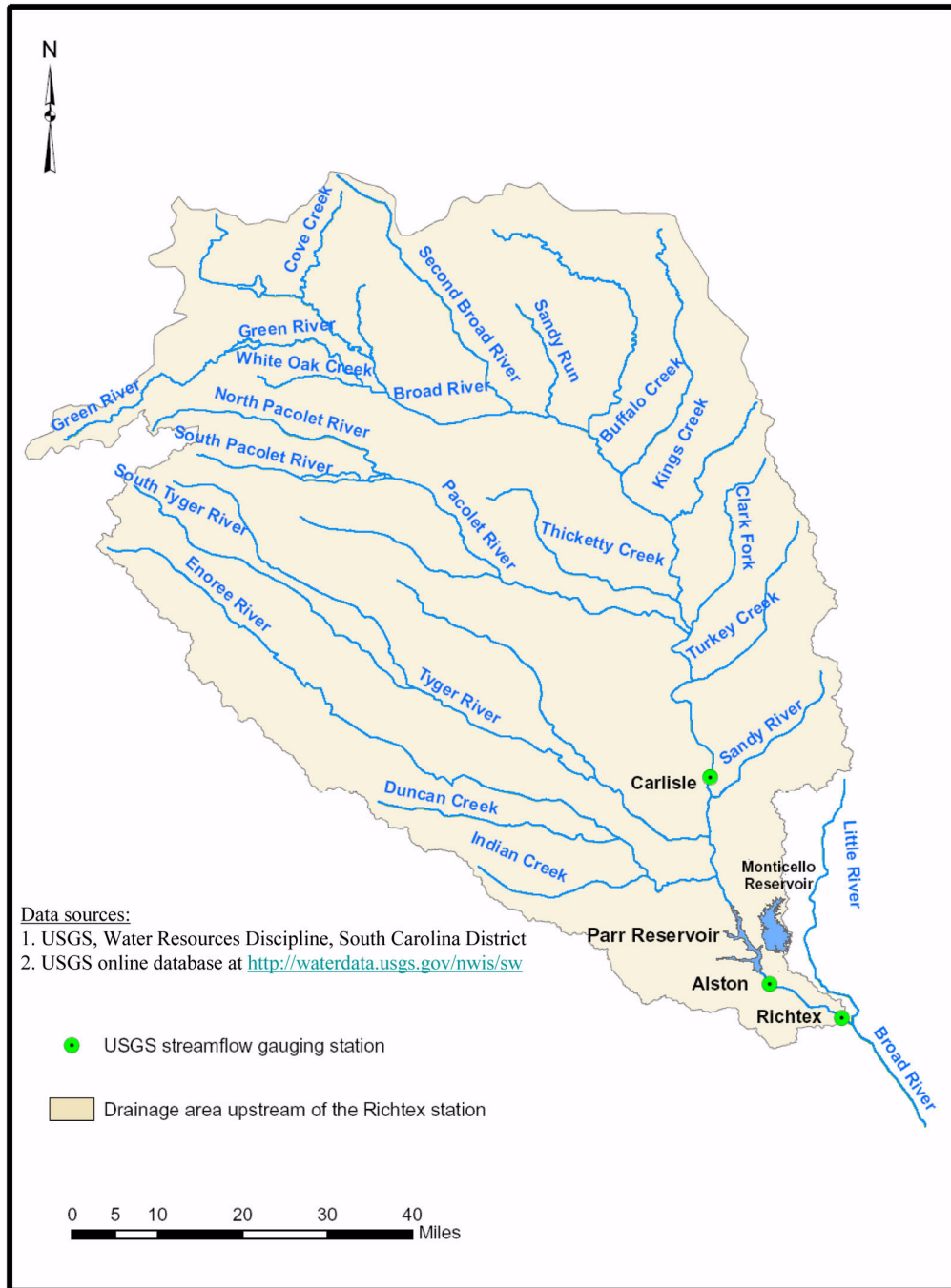


Figure 2.4-204. Broad River Watershed at Richtex

V. C. Summer Nuclear Station, Units 2 and 3  
 COL Application  
 Part 2, FSAR

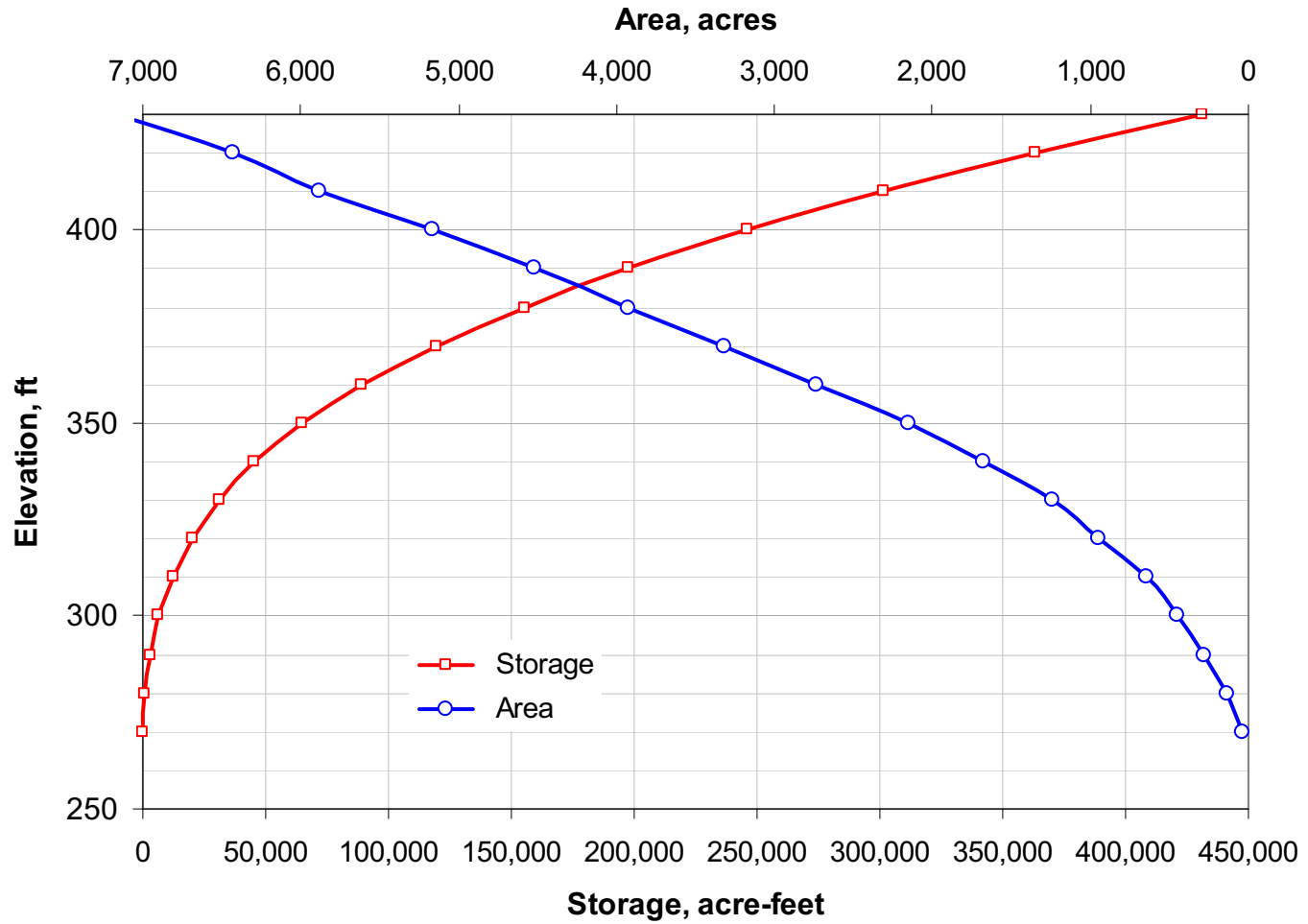


Figure 2.4-205. Monticello Reservoir Area and Storage Capacity Curves (Elevations Relative to NGVD29)

V. C. Summer Nuclear Station, Units 2 and 3  
 COL Application  
 Part 2, FSAR

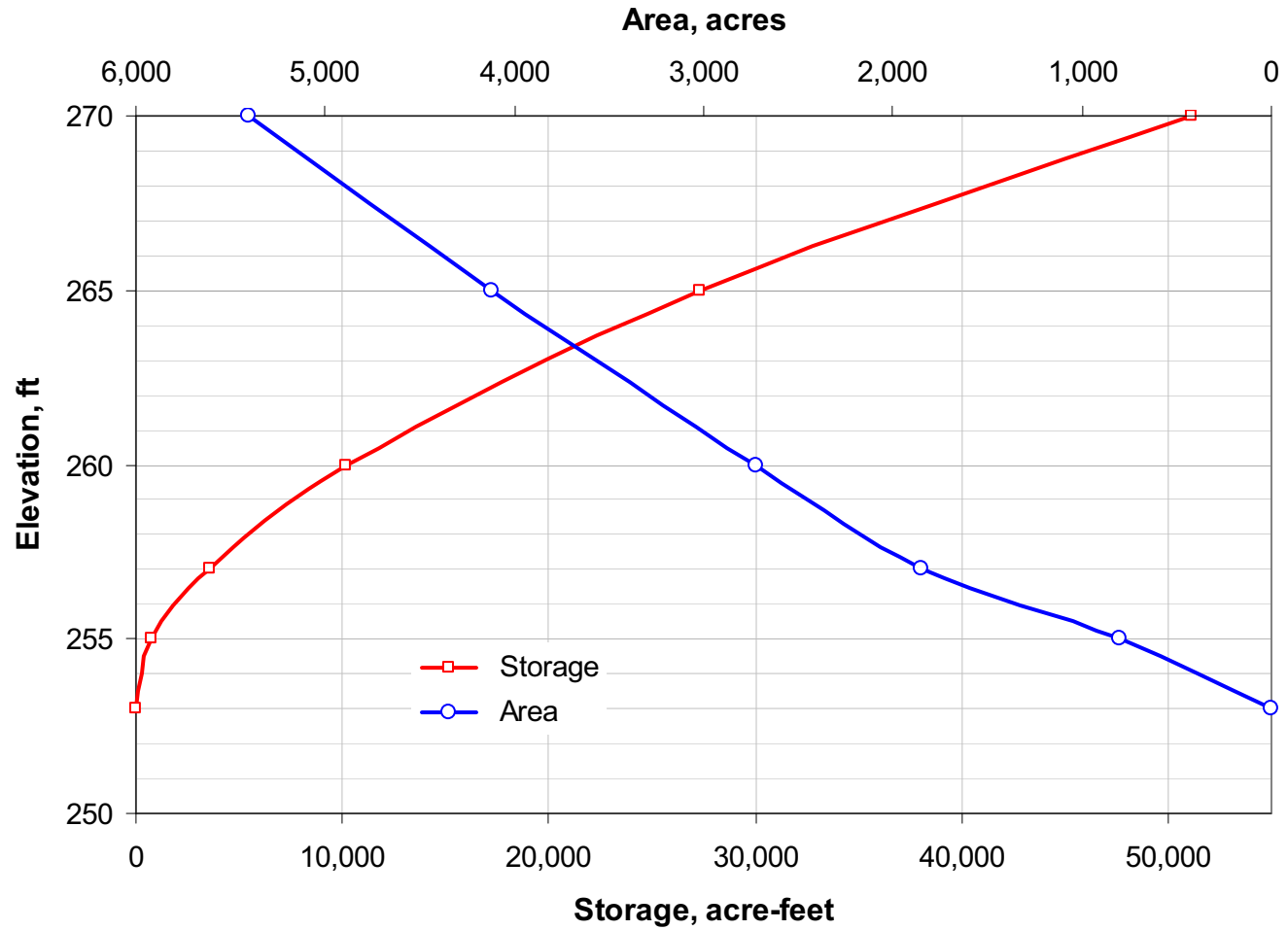


Figure 2.4-206. Parr Reservoir Area and Storage Capacity Curves (Elevations Relative to NGVD29)

V. C. Summer Nuclear Station, Units 2 and 3  
COL Application  
Part 2, FSAR

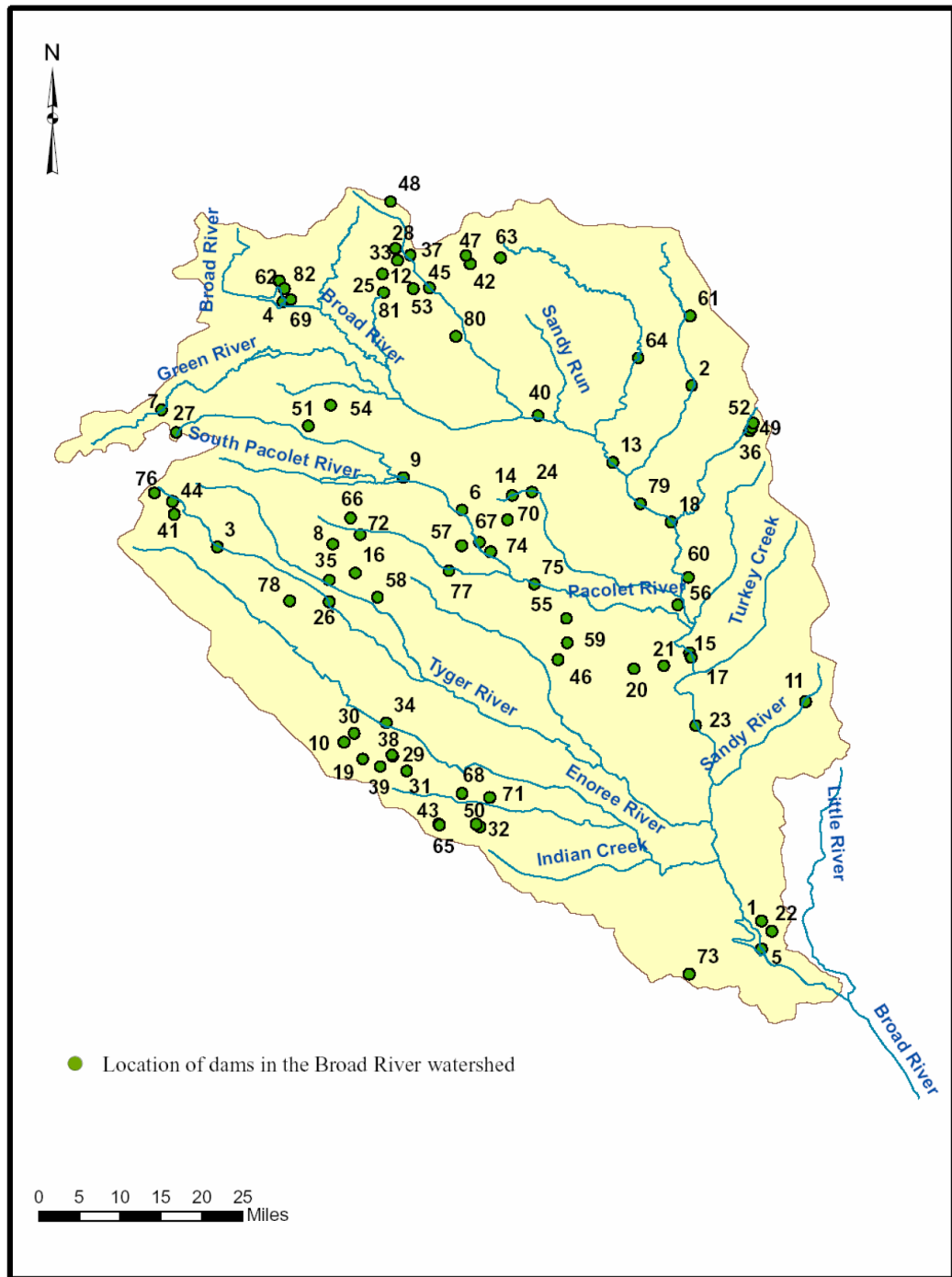


Figure 2.4-207. Location of Dams in the Broad River Watershed Upstream of the Richtex Station see [Table 2.4-204](#) for Dam Data)

V. C. Summer Nuclear Station, Units 2 and 3  
COL Application  
Part 2, FSAR

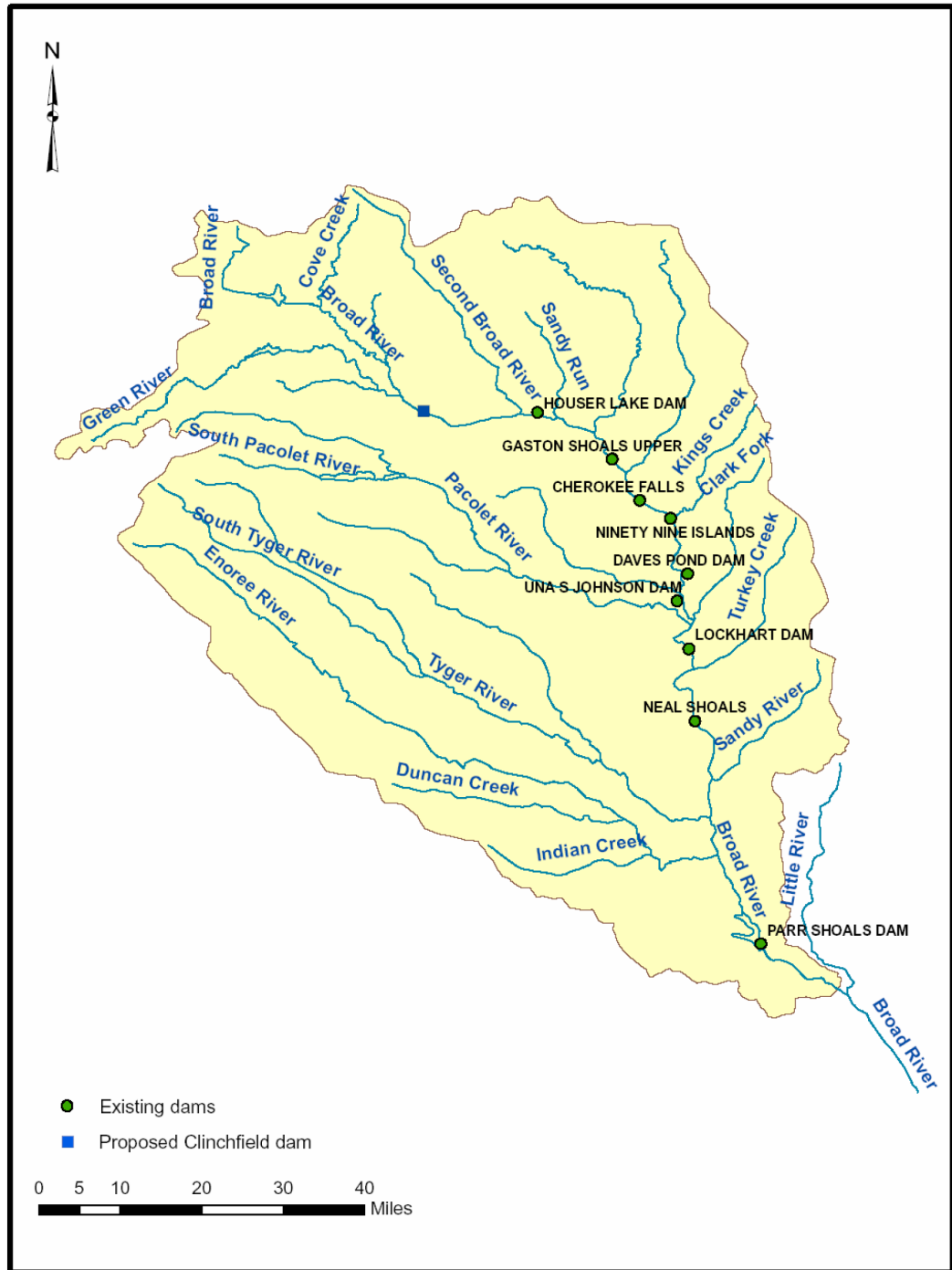
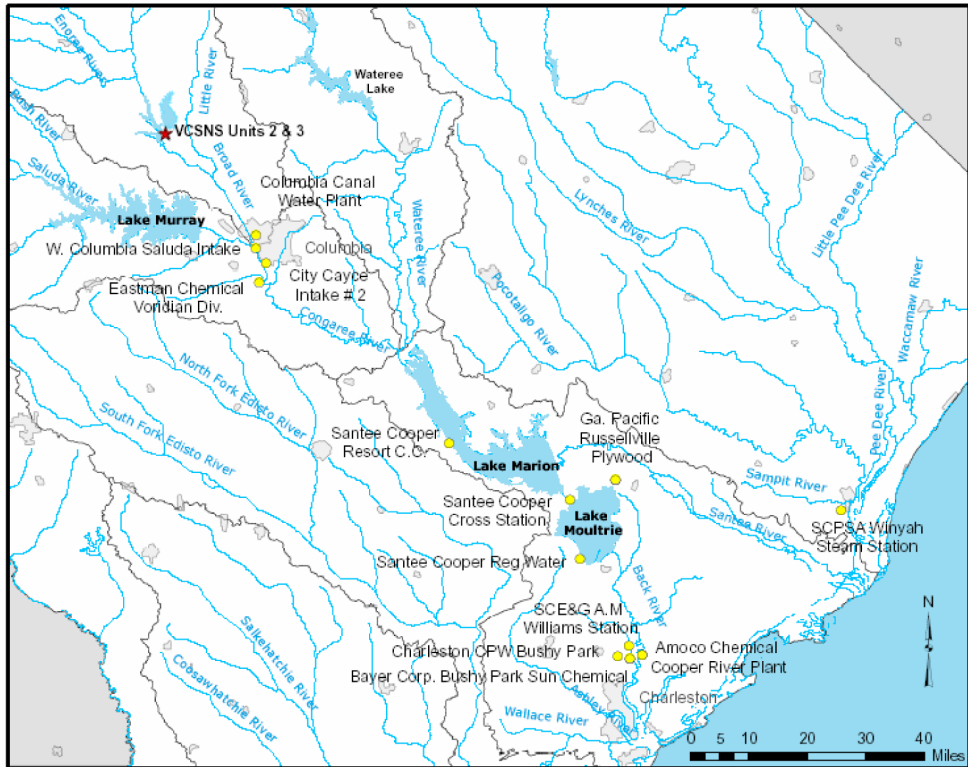


Figure 2.4-208. Locations of Existing and Proposed Reservoirs between Parr Shoals and Clinchfield Dams on Broad River



**V. C. Summer Nuclear Station, Units 2 and 3  
COL Application  
Part 2, FSAR**



● Downstream water user

**Figure 2.4-209. Downstream Water Users**

V. C. Summer Nuclear Station, Units 2 and 3  
 COL Application  
 Part 2, FSAR

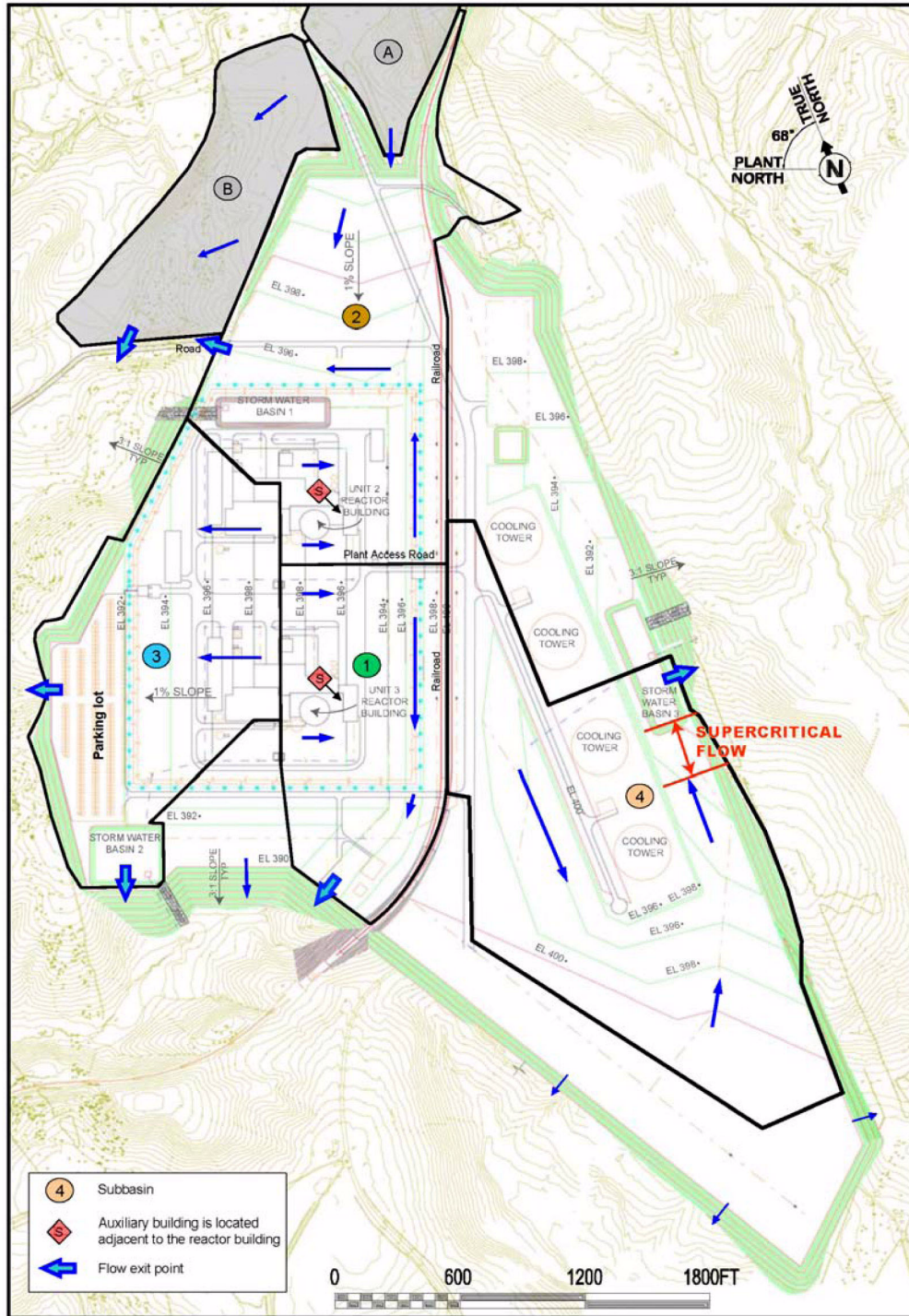
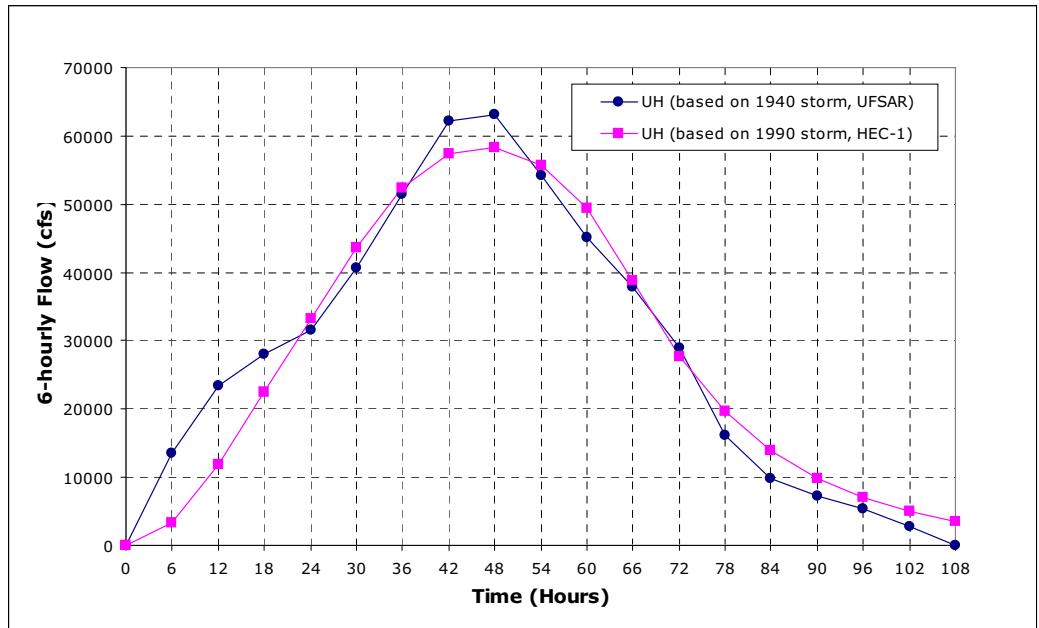
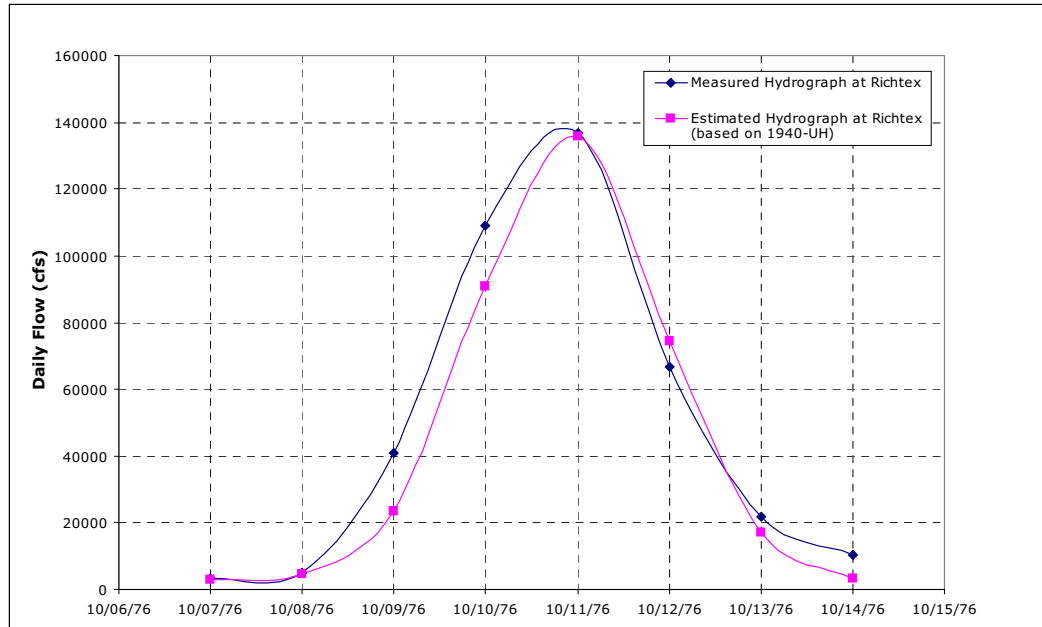


Figure 2.4-210. Plant Site Drainage Basins and Flow Paths

**V. C. Summer Nuclear Station, Units 2 and 3  
COL Application  
Part 2, FSAR**



**Figure 2.4-211. Comparison of 1940 UH and HEC-1 Optimized UH Based on 1990 Storm Event**



**Figure 2.4-212. Comparison of Measured vs. Estimated Flood Hydrograph for 1976 Storm Event**

V. C. Summer Nuclear Station, Units 2 and 3  
COL Application  
Part 2, FSAR

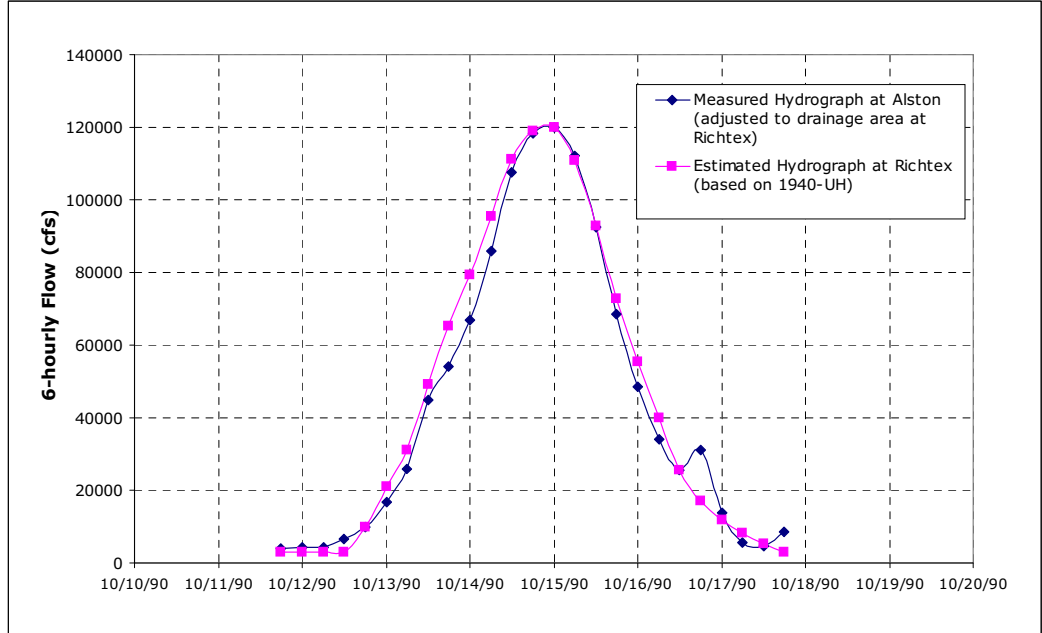


Figure 2.4-213. Comparison of Measured vs. Estimated Flood Hydrograph for 1990 Storm Event

V. C. Summer Nuclear Station, Units 2 and 3  
COL Application  
Part 2, FSAR

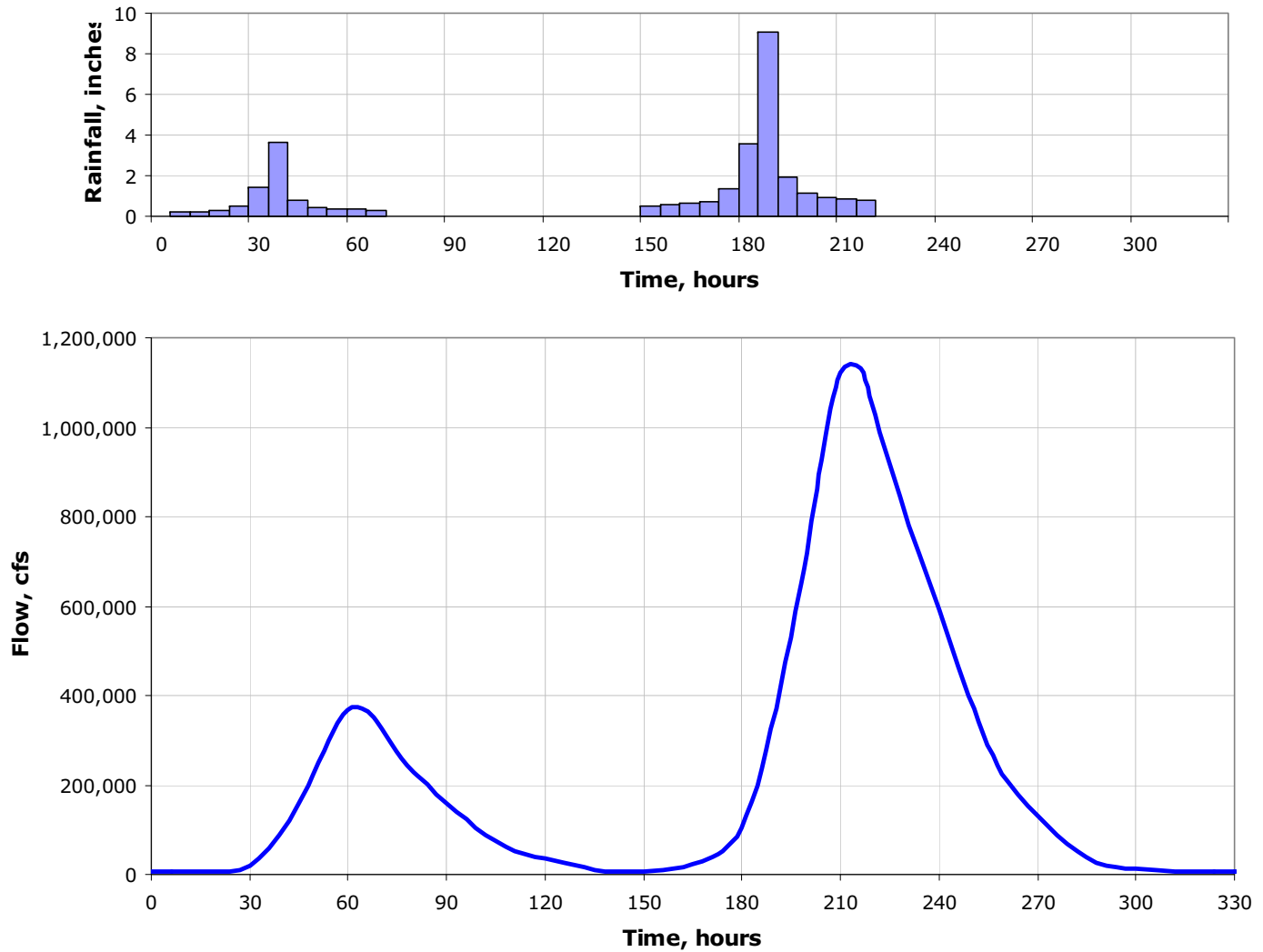


Figure 2.4-214. PMP Rainfall Hyetograph and the PMF Hydrograph for the Broad River Watershed at Richtex

V. C. Summer Nuclear Station, Units 2 and 3  
COL Application  
Part 2, FSAR

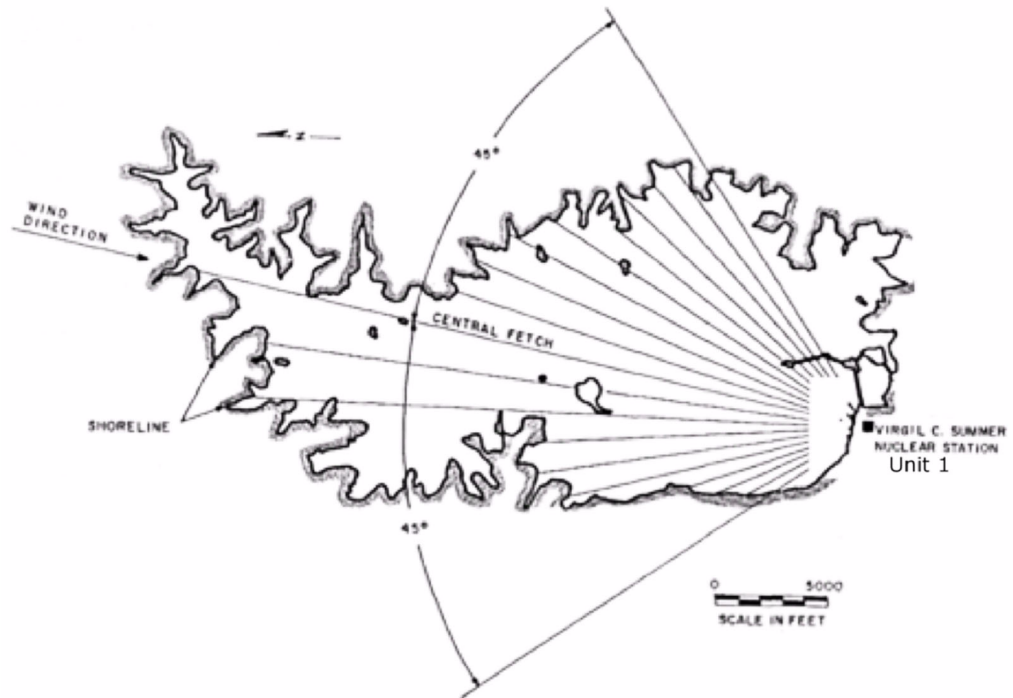
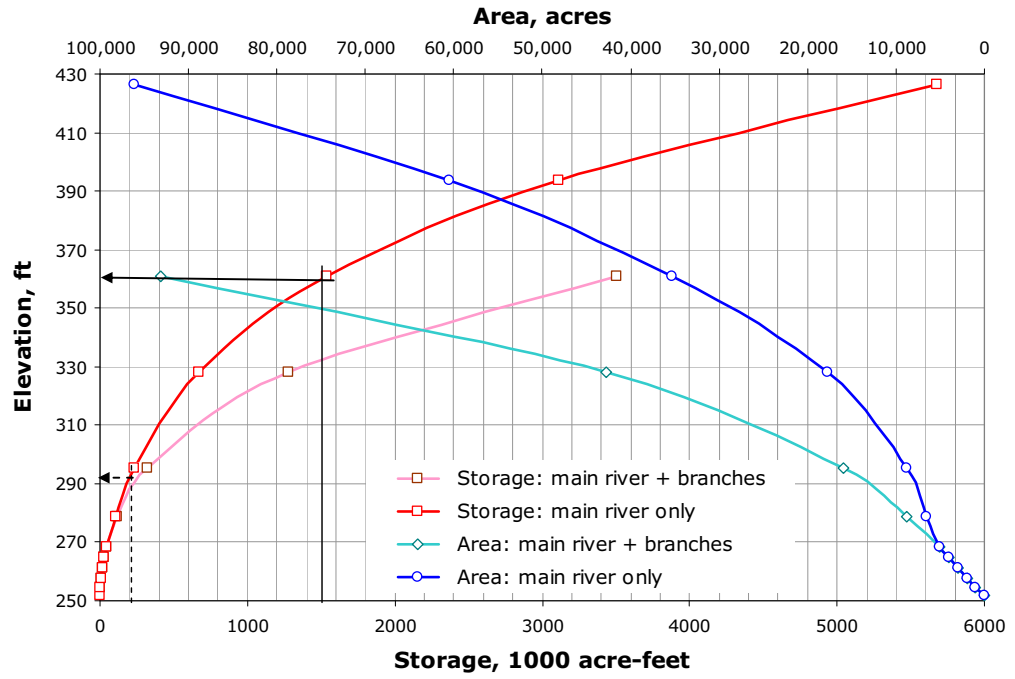


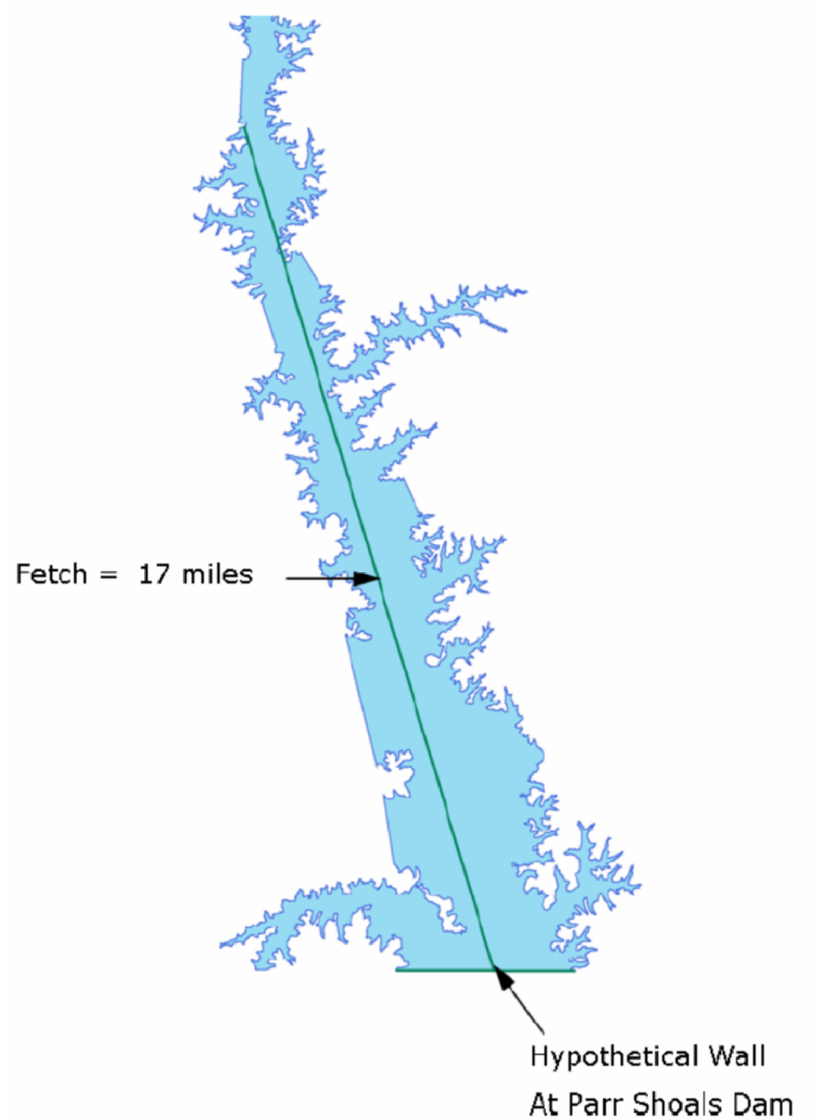
Figure 2.4-215. Wind Fetch Analysis for Monticello Reservoir

**V. C. Summer Nuclear Station, Units 2 and 3  
COL Application  
Part 2, FSAR**



**Figure 2.4-216. Elevation Storage Curves Hypothetical Reservoir at Parr Shoals Dam (Elevations Relative to NGVD29)**

V. C. Summer Nuclear Station, Units 2 and 3  
COL Application  
Part 2, FSAR



**Figure 2.4-217. Fetch Length for Hypothetical Reservoir at Parr Shoals Dam**



V. C. Summer Nuclear Station, Units 2 and 3  
COL Application  
Part 2, FSAR

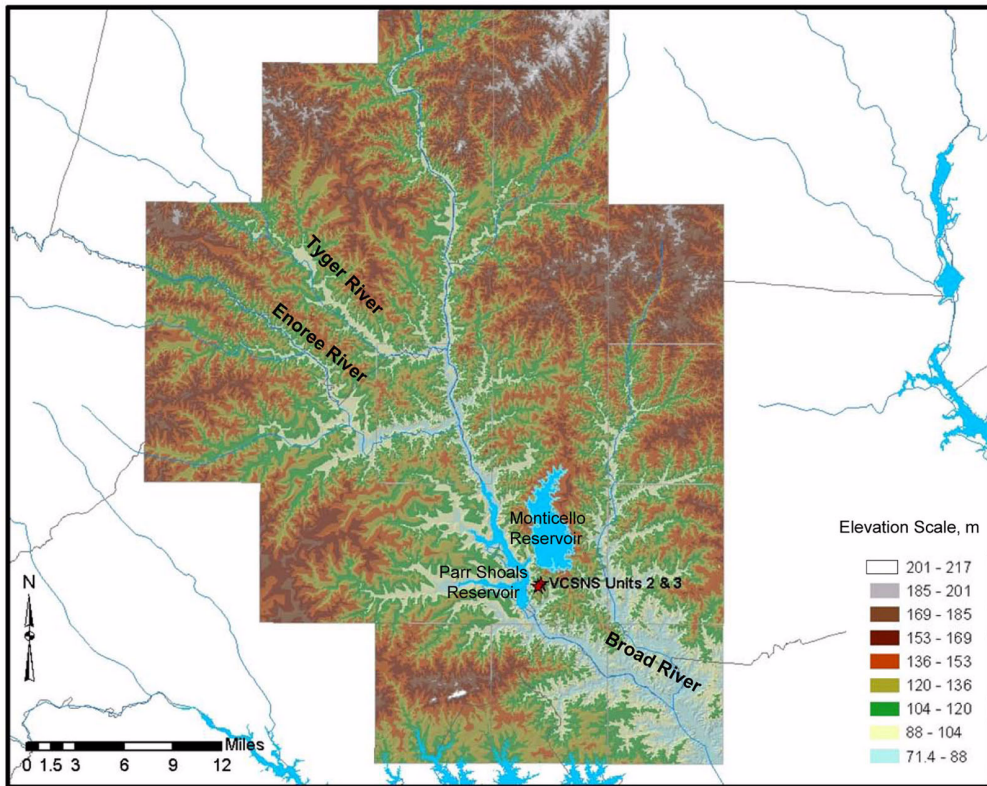


Figure 2.4-218. Topography of Part of the Broad River Watershed Upstream of Parr Shoals Dam (Reference 230)

V. C. Summer Nuclear Station, Units 2 and 3  
COL Application  
Part 2, FSAR

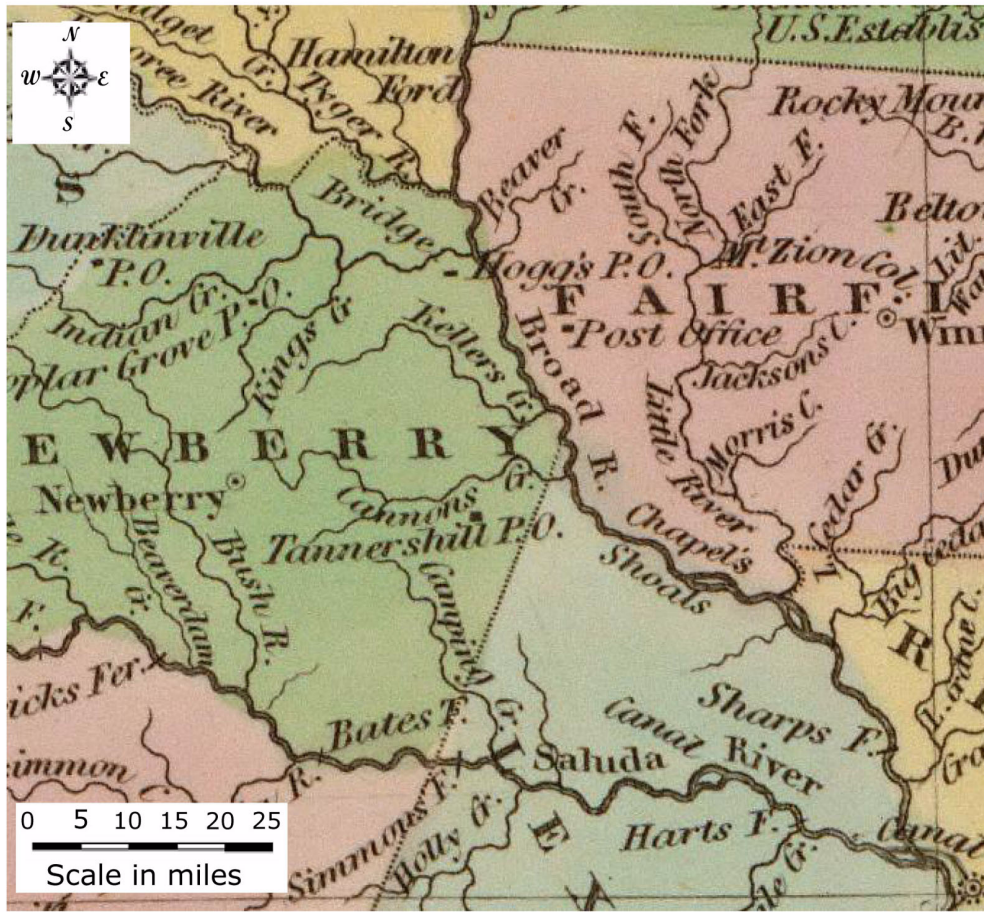


Figure 2.4-219. Map of South Carolina from 1838 (Reference 205)

V. C. Summer Nuclear Station, Units 2 and 3  
COL Application  
Part 2, FSAR

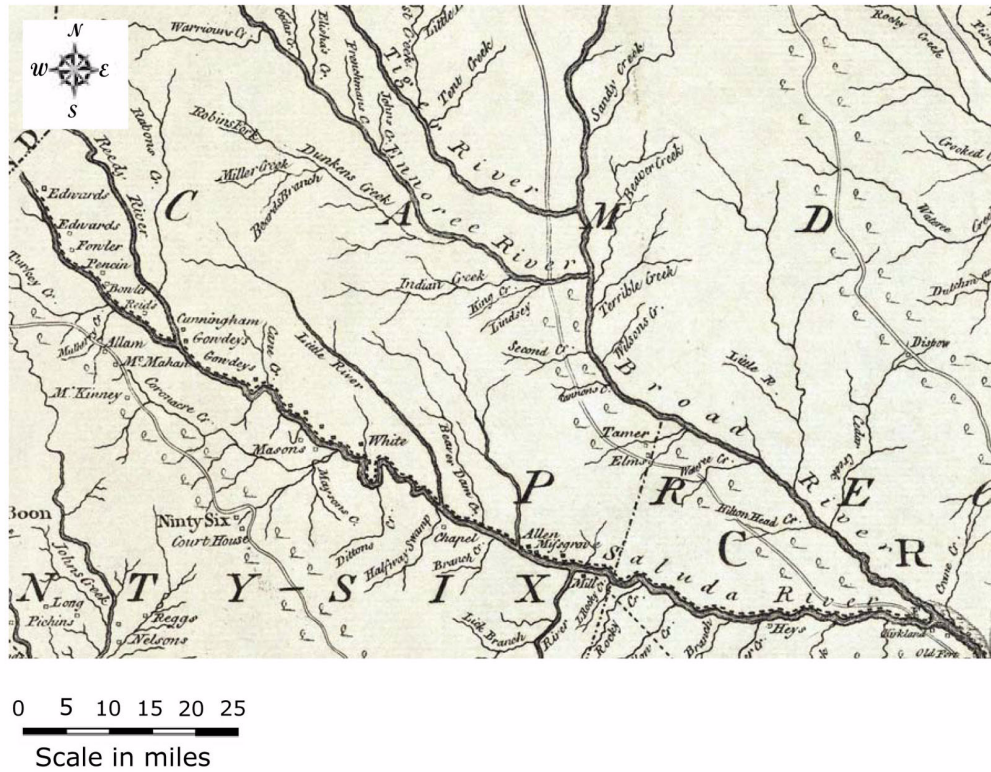


Figure 2.4-220. Map of South Carolina from 1773 (Reference 208)