



QSA Global, Inc.
 40 North Avenue
 Burlington, MA 01803
 Telephone: (781) 272-2000
 Toll Free: (800) 815-1383
 Facsimile: (781) 273-2216

25 October 2007

ATTN: Document Control Desk
 Spent Fuel Project Office
 Office of Nuclear Material Safety and Safeguards
 U.S. Nuclear Regulatory Commission
 11555 Rockville Pike
 One White Flint
 Rockville, MD 20852

RE: USA/6613/B(U)-96 (Current Revision 12)

Dear Director:

QSA Global, Inc. requests one additional correction to the renewal of the certificate submitted to your office on 5 October 2007. This change is necessary to correct a typographical error recently identified on the descriptive assembly drawing.

Enclosed with this letter is a copy of drawing R70290 Rev R. This revision corrects the weld specification for the skid pads on Sheet 3 of 10. Currently the drawing specifies this weld as a ¼ fillet weld all around the skid pad. In actuality, the skid pad is placed flush to one side of the skid prior to welding and is only fillet welded on 3 sides since a fillet weld cannot be produced on the flush side. The corrected weld specification on Sheet 3 of 10 for drawing R70290 Rev R also reflects the construction of the 702 test units which were used in the normal and hypothetical accident condition testing described in Test Plan Report 81.

At this time there are no further changes or modifications necessary to this Type B approval. Should you have any additional questions or wish to discuss this submission after receipt please contact me.

Sincerely,

Lori Podolak
 Senior Regulatory Affairs Specialist
 RA/QA Department
 Ph: (781) 505-8241
 Fax: (781) 359-9191
 Email: Lori.Podolak@qsa-global.com

RA/QA Approval

25 Oct 07
 Date

Engineering Approval

25 Oct 07
 Date

Enclosure: Drawing R70290 Rev R

cc:

Mr. Robert Nelson
 Division of Spent Fuel Storage and Transportation
 Office of Nuclear Material Safety and Safeguards
 U.S. Nuclear Regulatory Commission
 11555 Rockville Pike, Mailstop: EBB-3D-02M
 Rockville, MD 20852

NIMS501

5

4

3

2

1

D

D

C

C

B

B

A

A

Text Withheld Under 10 CFR 2.390



40 NORTH AVE, BURLINGTON, MA 01803

DESCRIPTIVE
DRAWING

TITLE	MODEL <input type="checkbox"/>
ISOTOPE SHIELD SHIPPING CONTAINER	

SIZE B	DWG. NO.	R70290	REV R
	SCALE:	1/4	

5

4

3

2

1

5

4

3

2

1

D

D

C

C

B

B

A

A

Text Withheld Under 10 CFR 2.390



40 NORTH AVE, BURLINGTON, MA 01803

DESCRIPTIVE
DRAWING

TITLE ISOTOPE SHIELD SHIPPING CONTAINER
MODEL

SIZE B	DWG. NO.	R70290	REV R
	SCALE:	1/8	

5

4

3

2

1

Figure Withheld Under 10 CFR 2.390



40 NORTH AVE, BURLINGTON, MA 01803

DESCRIPTIVE
DRAWING

TITLE		MODEL <input type="checkbox"/>	
ISOTOPE SHIELD SHIPPING CONTAINER			
SIZE	DWG. NO.	R70290	REV
B	SCALE: 1/8	SHEET 3 OF 10	R

5

4

3

2

1

D

D

C

C

B

B

A

A

Figure Withheld Under 10 CFR 2.390



40 NORTH AVE, BURLINGTON, MA 01803

DESCRIPTIVE
DRAWING

TITLE ISOTOPE SHIELD SHIPPING CONTAINER MODEL

SIZE B	DWG. NO.	R70290	REV R
	SCALE:	1/8	

5

4

3

2

1

Figure Withheld Under 10 CFR 2.390

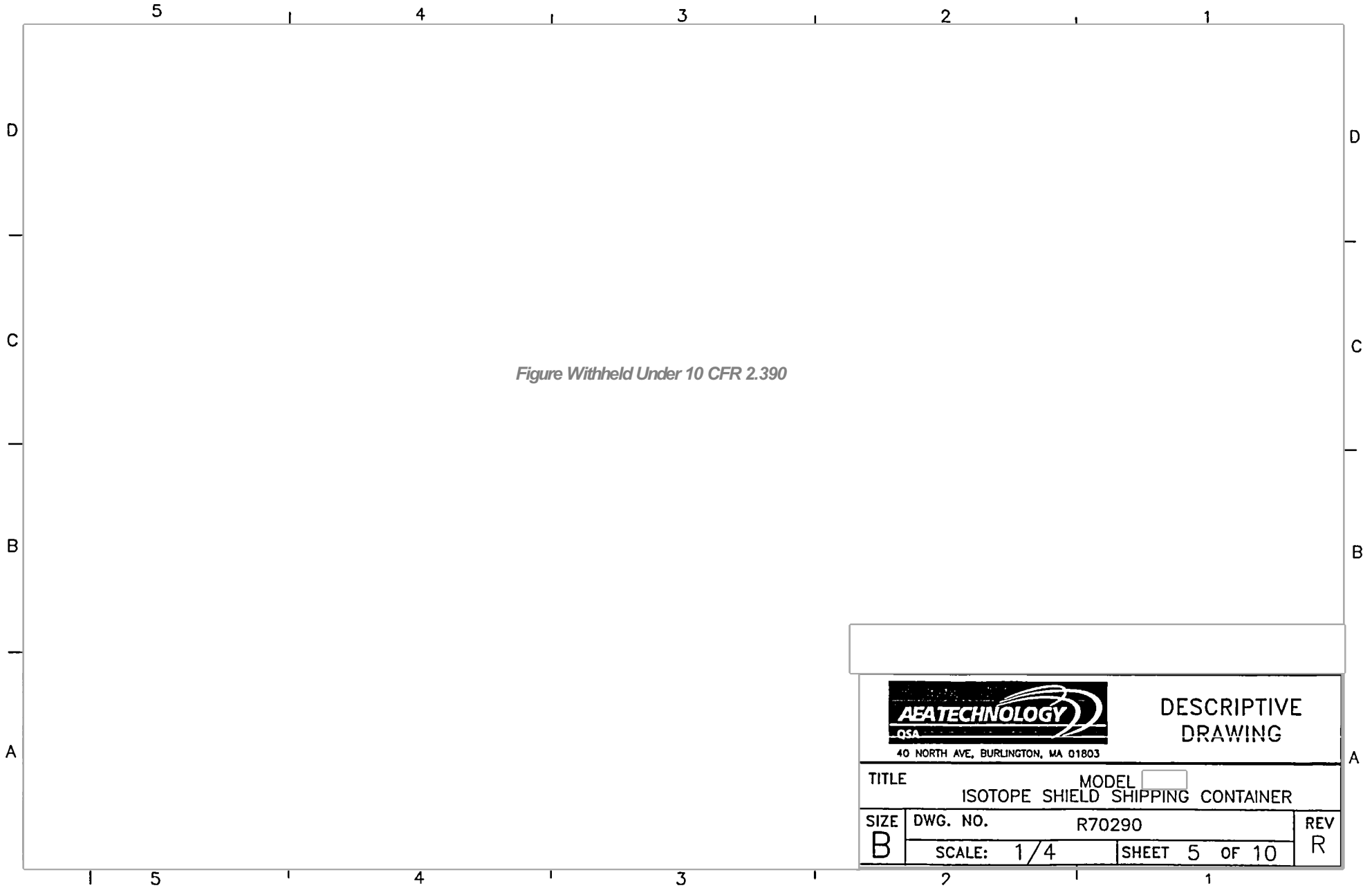


40 NORTH AVE, BURLINGTON, MA 01803

DESCRIPTIVE
DRAWING

TITLE ISOTOPE SHIELD SHIPPING CONTAINER MODEL

SIZE B	DWG. NO.	R70290	REV R
	SCALE:	1/4	



5

4

3

2

1

D

D

C

C

B

B

A

A

Figure Withheld Under 10 CFR 2.390



40 NORTH AVE, BURLINGTON, MA 01803

DESCRIPTIVE
DRAWING

TITLE		MODEL	<input type="checkbox"/>
ISOTOPE SHIELD SHIPPING CONTAINER			
SIZE	DWG. NO.	R70290	
B	SCALE:	1/4	SHEET 6 OF 10
			REV R

5

4

3

2

1

5

4

3

2

1

D

D

C

C

B

B

A

A

Figure Withheld Under 10 CFR 2.390



40 NORTH AVE, BURLINGTON, MA 01803

DESCRIPTIVE
DRAWING

TITLE	MODEL <input type="checkbox"/>
ISOTOPE SHIELD SHIPPING CONTAINER	

SIZE B	DWG. NO.	R70290	REV R
	SCALE:	1/2	

2

1

5

4

3

Figure Withheld Under 10 CFR 2.390



40 NORTH AVE, BURLINGTON, MA 01803

DESCRIPTIVE
DRAWING

TITLE ISOTOPE SHIELD SHIPPING CONTAINER MODEL

SIZE B	DWG. NO. R70290	REV R
SCALE: 1/2	SHEET 8 OF 10	

5

4

3

2

1

D

D

C

C

B

B

A

A

Figure Withheld Under 10 CFR 2.390



40 NORTH AVE, BURLINGTON, MA 01803

DESCRIPTIVE
DRAWING

TITLE ISOTOPE SHIELD SHIPPING CONTAINER MODEL

SIZE B	DWG. NO.	R70290	REV R
	SCALE:	1/2	

5

4

3

2

1

D

C

B

A

Figure Withheld Under 10 CFR 2.390



40 NORTH AVE., BURLINGTON, MA 01803

DESCRIPTIVE
DRAWING

TITLE	MODEL <input type="checkbox"/>
ISOTOPE SHIELD SHIPPING CONTAINER	

SIZE	DWG. NO.	R70290	REV
B	SCALE: 1/1	SHEET 10 OF 10	R

D

C

B

A