

# Attachment 5:

Selected Photographs from  
The March 2009 Preliminary  
National Register of Historic Places Evaluation for  
the Enrico Fermi Atomic Power Plant



Plate 18 View of turbine building looking northwest (Photograph by RCG&A, 2008)

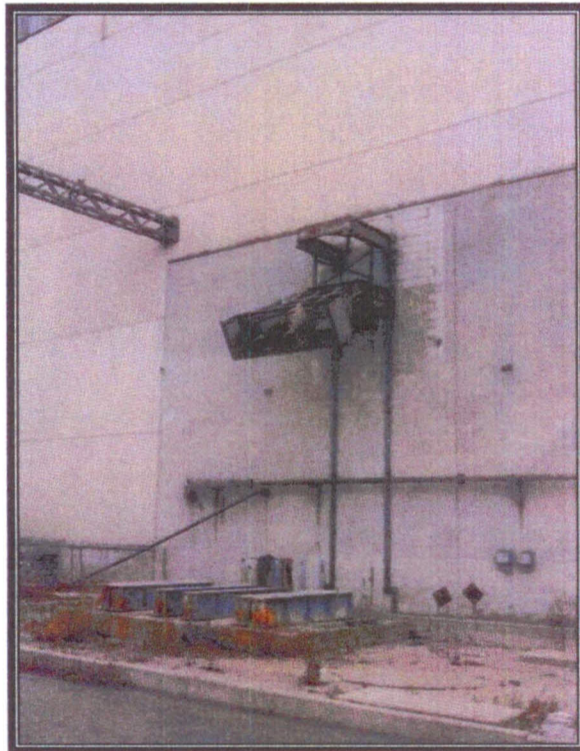


Plate 19 Concrete block wall section at transformer pad (Photograph by RCG&A, 2008)

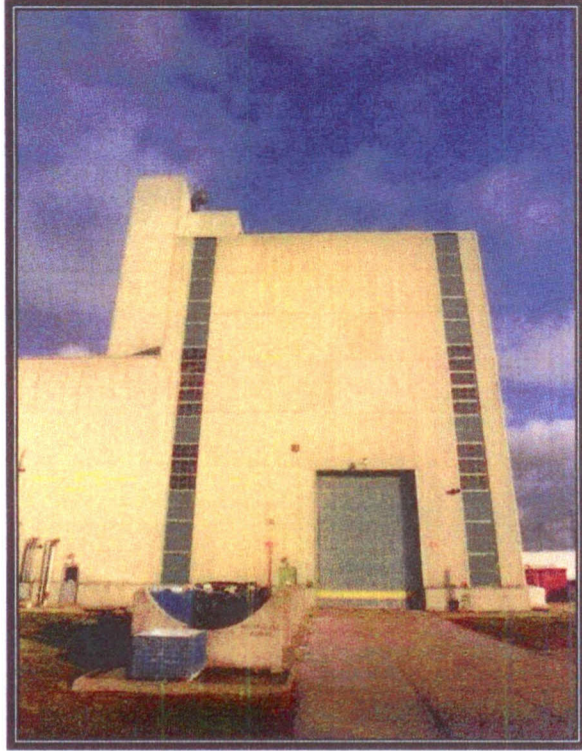


Plate 20 West wall of turbine building (Photograph by RCG&A, 2008)

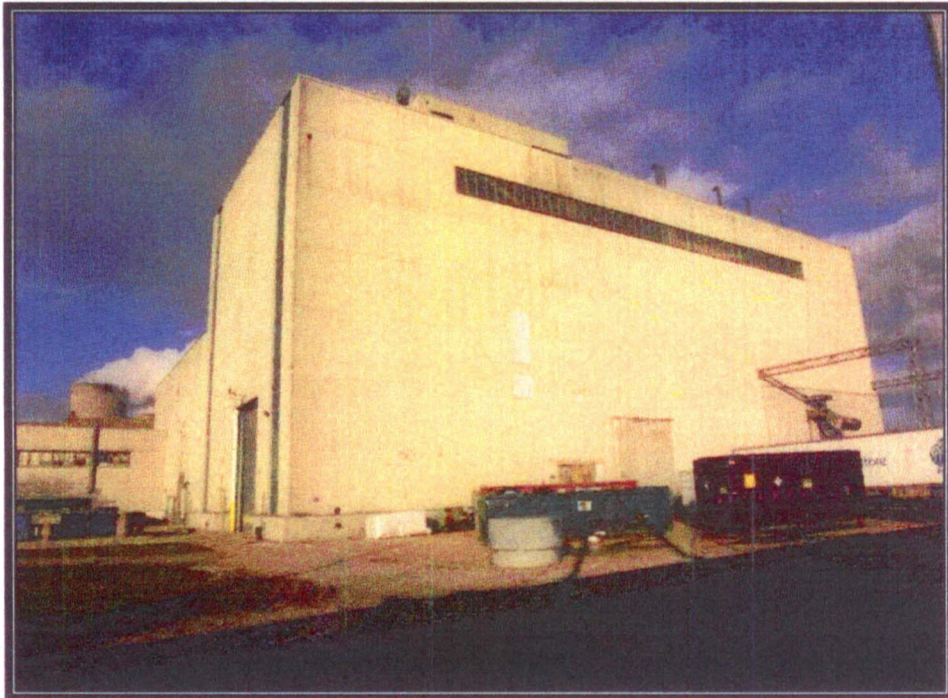


Plate 21 South wall of turbine building (Photograph by RCG&A, 2008)



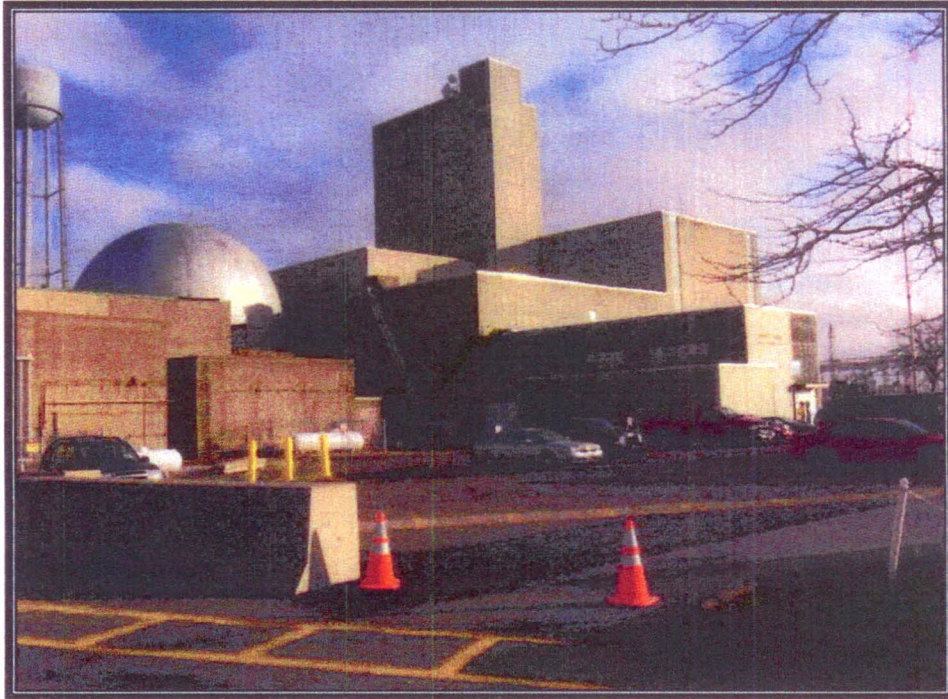


Plate 31 View of plant looking southeast. Control room building is to the left of the office building (Photograph by RCG&A, 2008)

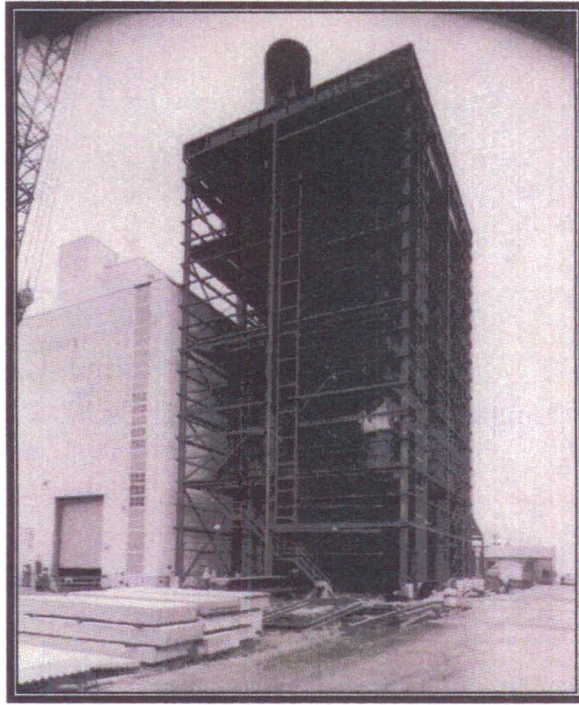


Plate 40 Construction of oil-fired boiler house, ca. 1965 (Courtesy DECo)



Plate 41 Aerial view of plant showing boiler house to the right, ca. 1975 (Courtesy DECo)



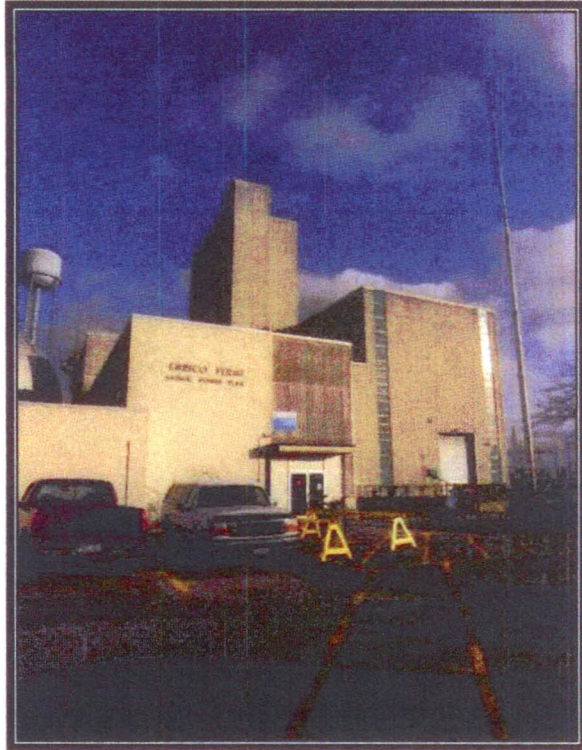


Plate 44 Office building looking southwest (Photograph by RCG&A, 2008)

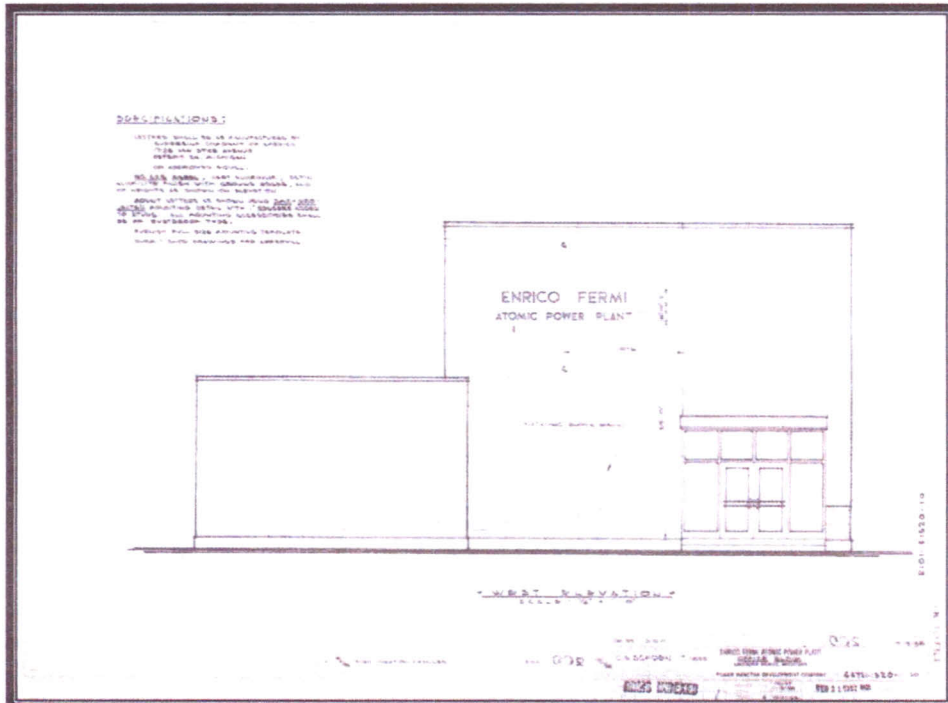


Plate 45 Elevation of west wall of office building (Courtesy DECo)

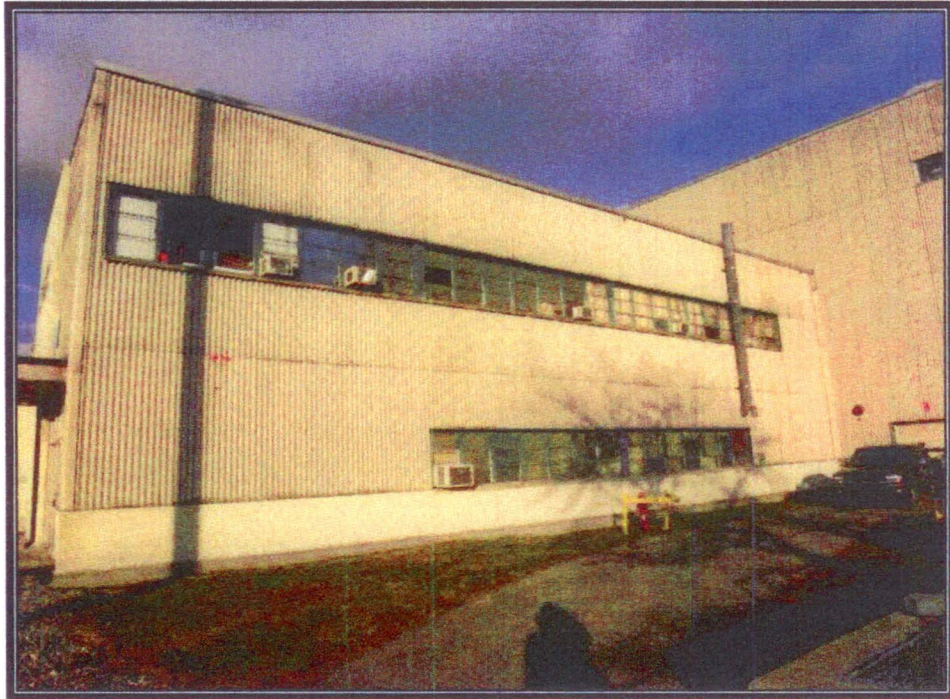


Plate 46 South wall of office building (Photograph by RCG&A, 2008)



Plate 48 Steam generator building looking southwest (Photograph by RCG&A, 2008)





Plate 59 Location of KAPOW! pipes on north wall of steam generator building (Photograph by RCG&A, 2008)

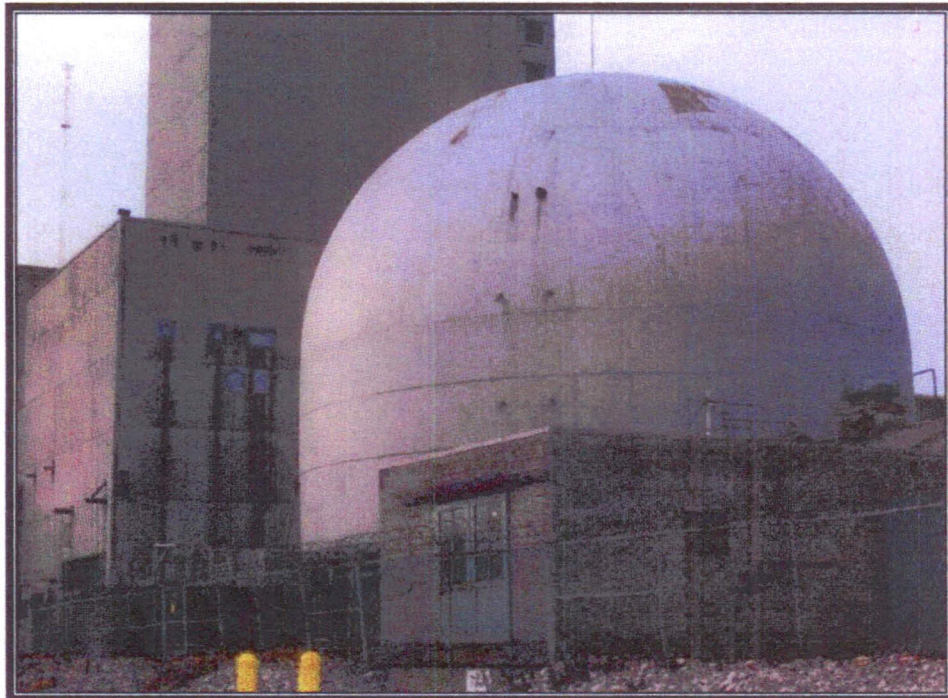


Plate 60 View of reactor containment building looking southwest (Photograph by RCG&A, 2008)



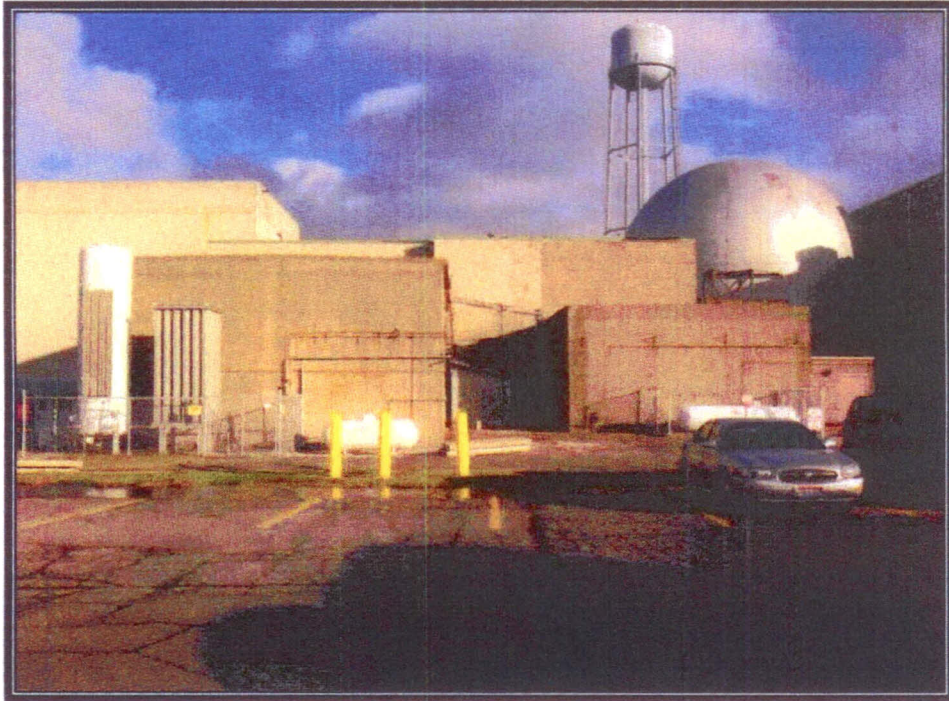


Plate 135 View of sodium service building looking east (Photograph by RCG&A, 2008)



Plate 136 East wall of sodium service building showing upper, concrete block section (Photograph by RCG&A, 2008)



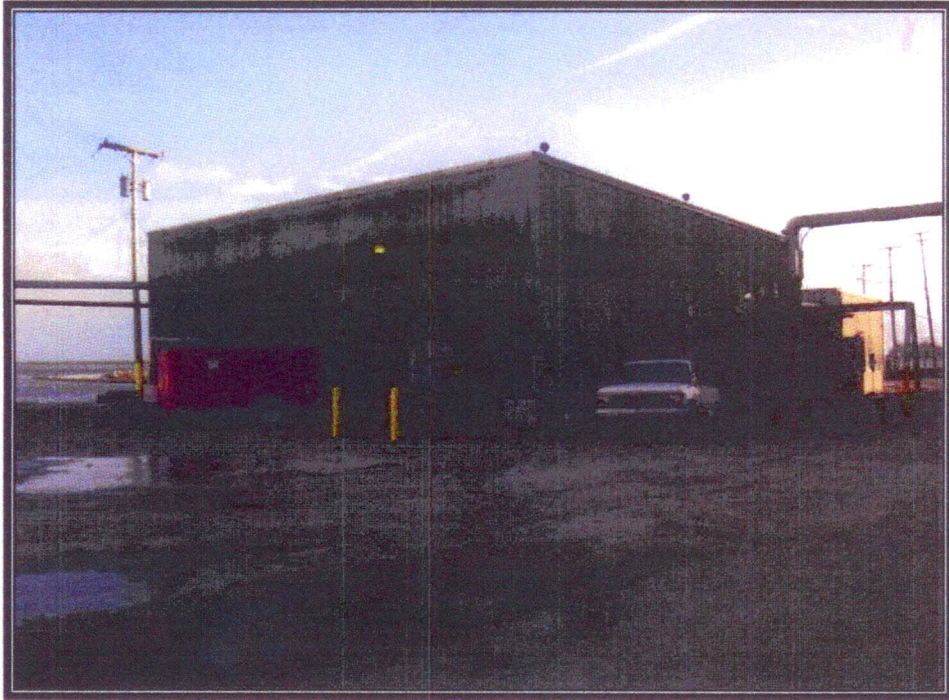


Plate 146 View of plant services building looking southeast (Photograph by RCG&A, 2008)



Plate 147 View of plant looking southeast, note water tower (Photograph by RCG&A, 2008)





Plate 148 View of visitor's center looking west (Photograph by RCG&A, 2008)



Plate 149 View of visitor's center looking east (Photograph by RCG&A, 2008)



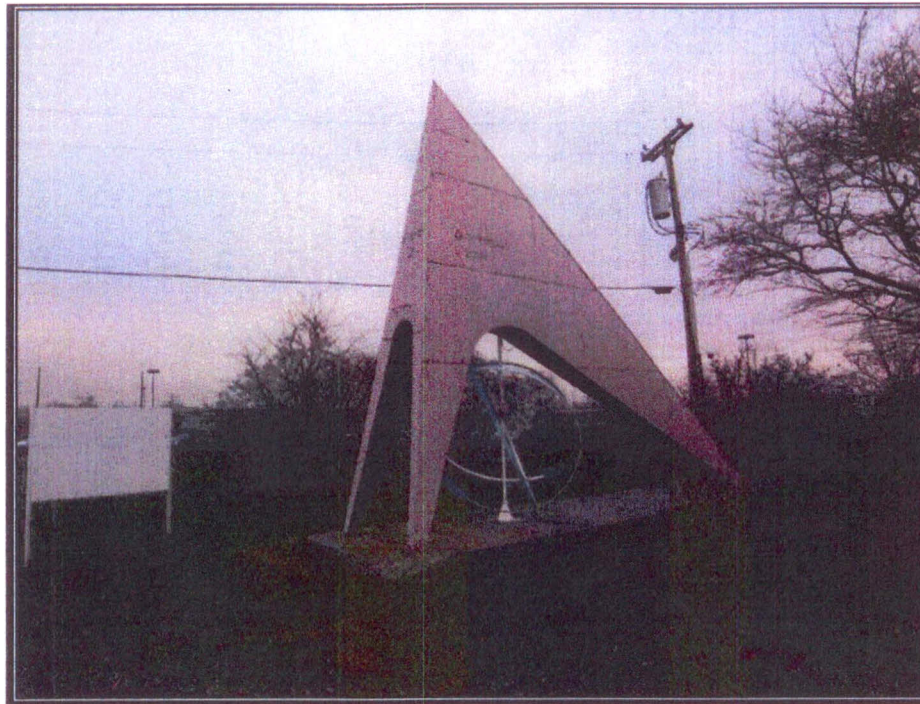


Plate 152 Visitor's center sign looking west (Photograph by RCG&A, 2008)

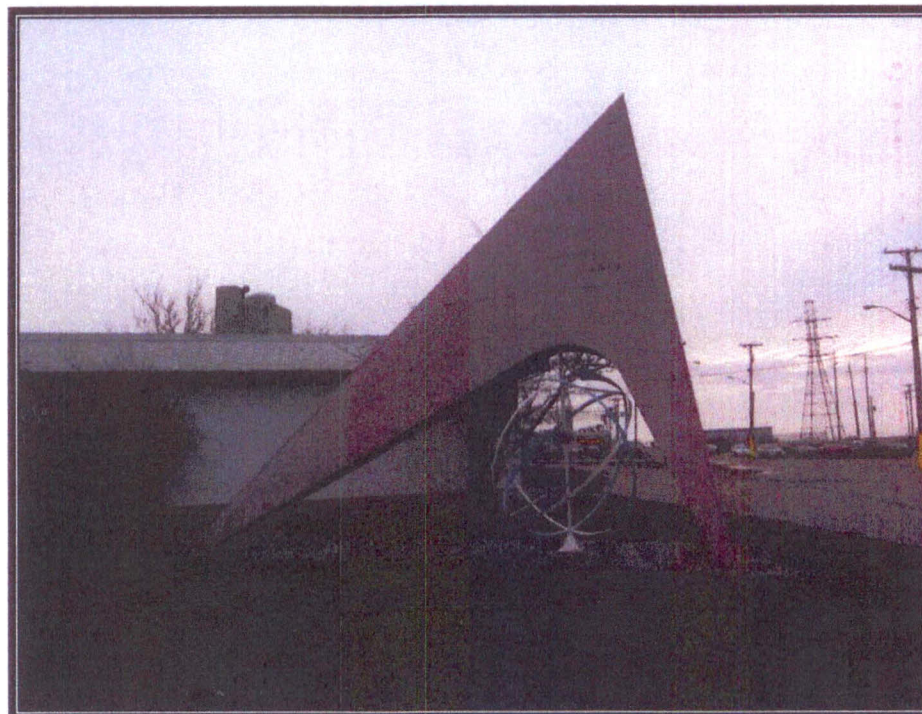


Plate 153 Visitor's center sign looking east (Photograph by RCG&A, 2008)