

NOTES

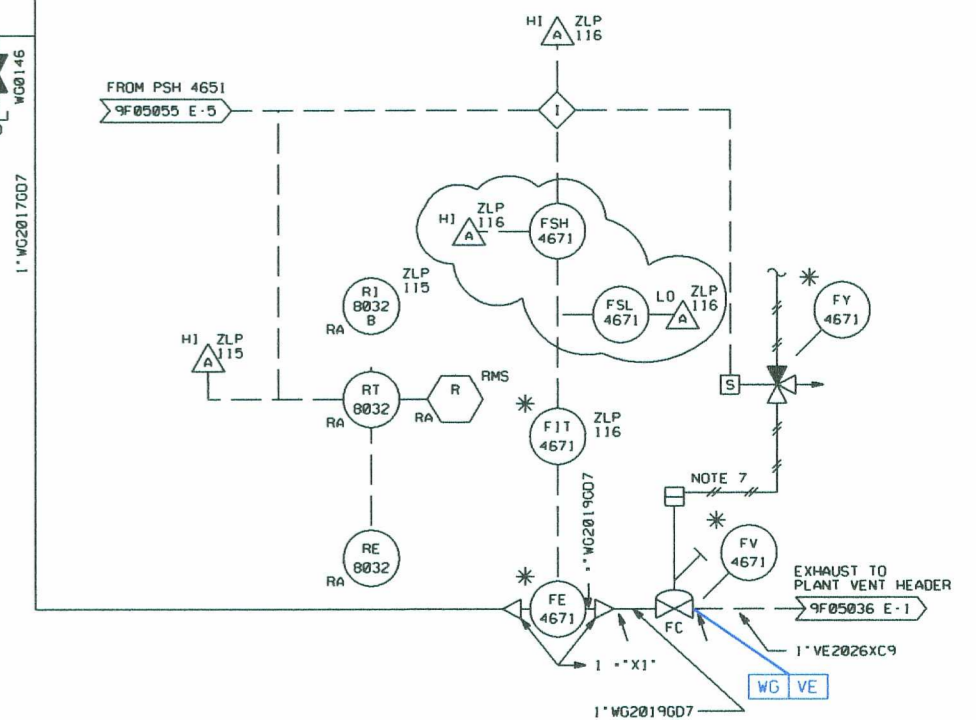
1. FOR P&ID OF REFRIGERATION AND WATER REMOVAL SKIDS SEE DRAWING 7R319F05055-2
2. THE GUARD BED, CHARCOAL BEDS AD1 & AD2, AND VESSEL SUPPORTS ARE SEISMIC CATEGORY 1. ALL OTHER COMPONENTS ARE NON-SEISMIC CATEGORY 1. NON-SEISMIC CATEGORY 1 COMPONENTS INSTALLED INSIDE A SEISMIC CATEGORY 1 BUILDING OR IN THE VICINITY OF A SEISMIC CATEGORY 1 COMPONENT, SHALL BE EVALUATED ACCORDING TO THE CRITERIA IN REFERENCE 4.
3. ALL INSTRUMENT TAG NUMBERS SHOWN ON THIS P&ID ARE PREFIXED BY THE UNIT NUMBER 2 UNLESS NOTED OTHERWISE.
4. ONE INCH SAMPLE LOOP VENTS TO BE LOCATED ON 1&C INSTALLATION DETAILS ONLY.
5. DELETED.
6. DELETED.
7. AIR OPERATOR EQUIPPED WITH MANUAL OVERRIDE.
8. THE SYSTEM DESIGNATOR OF ALL INSTRUMENTS ON THIS P&ID IS WG UNLESS NOTED OTHERWISE.
9. THE SEPARATION GROUP OF ALL INSTRUMENTS ON THIS P&ID IS N.

REFERENCES

1. DRAWINGS 9A310F00001 AND 9A310F00002.
2. GASEOUS WASTE PROCESSING SYSTEM P&ID, DRAWING 7R319F05055-2
3. CTI NUCLEAR DRAWING 7003001, (BECHTEL DRAWING 6464-00001-XX).
4. DESIGN CRITERIA, SYSTEMS INTERACTION, SEISMIC 11/7, TPNS NO. 7A36ND01003.

DRAWING APPLICABILITY NOTES

1. DELETED.
2. DELETED.
3. DELETED.
4. THIS DRAWING IS SHEET 2 OF 2 OF THE GWPS P&ID SET. SEE REFERENCE 2 FOR SHEET 1.
5. RE 8031 AND RE 8032 ARE OUTSIDE THE PIPES AND DO NOT COME IN CONTACT WITH THE GAS IN PROCESS.



0289

LR BOUNDARY DRAWING NO.	REV.
LR-STP-WG-7R319F05043#2	0

NO.	ISSUE DATE	REVISION	ORIG	CKR	RE	DV	SE	NO.	ISSUE DATE	REVISION	ORIG	CKR	RE	DV	SE	PRIORITY	CADD FILE NO.	FSUG. NO.	ST1. NO.	SCALE	DWG. NO.	SHT.	REV.
																				NONE	7R319F05043#2	1	15
15		INCORP. DCN 0301324.																					
14	1-6-99	INCORP. DCN 9804582.	VJM																				
13	12-1-98	INCORP. DCN 9803998.																					
12	9-30-82	ISSUED FOR CONSTRUCTION.																					

SOUTH TEXAS PROJECT
NUCLEAR OPERATING COMPANY

PIPING AND INSTRUMENTATION DIAGRAM
 GASEOUS WASTE PROCESSING SYSTEM