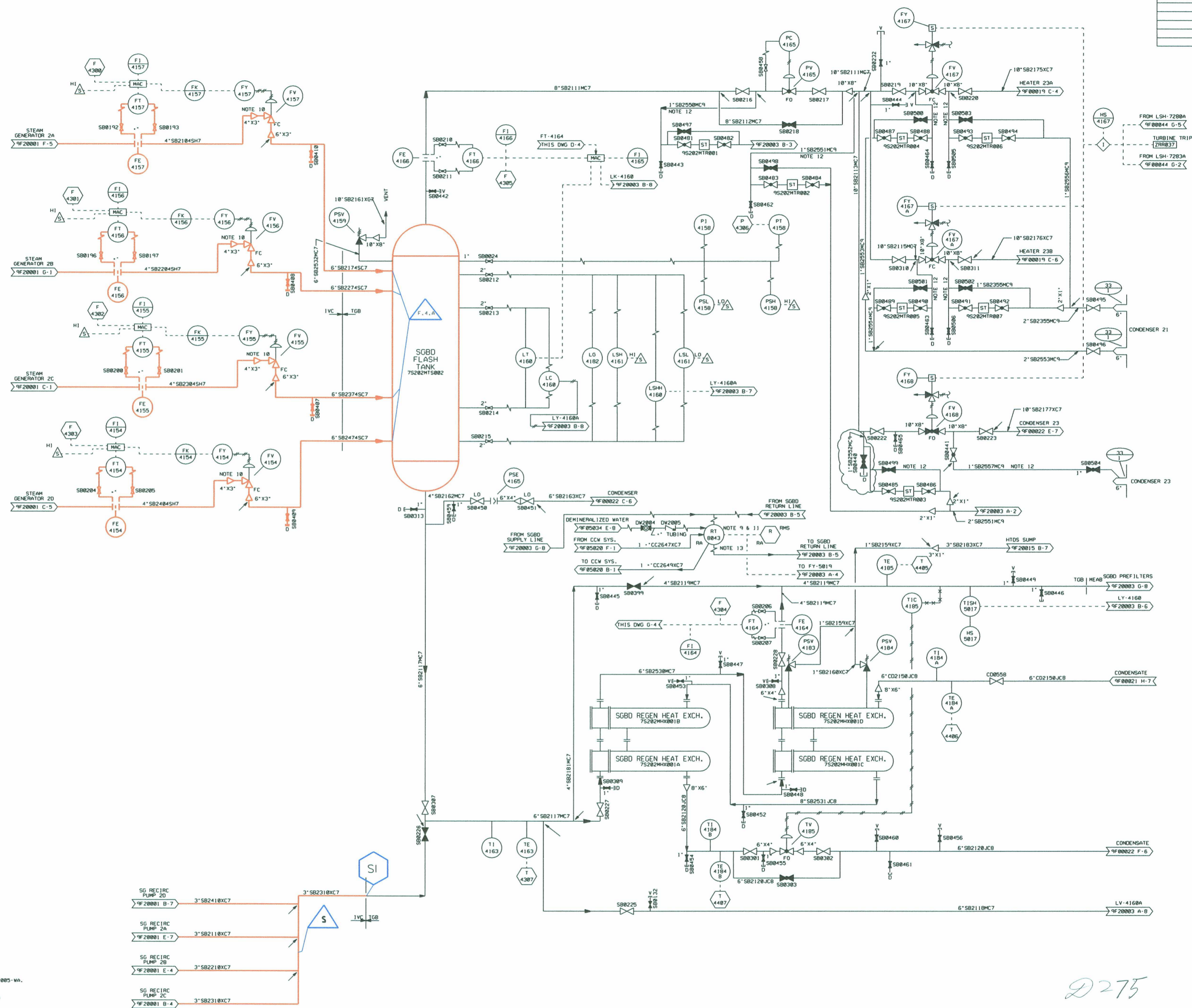


NO.	ISSUE DATE	REVISION



NOTES:

- REFER TO DRAWINGS 9S318F00001 AND 9S318F00002 FOR IDENTIFICATION NUMBER DETAILS.
- SYSTEM DESIGNATOR FOR THIS DRAWING IS SB, UNLESS OTHERWISE NOTED.
- DELETED.
- ALL INSTRUMENTS SHOWN ON THIS DIAGRAM HAVE SEPARATION GROUP N, EXCEPT WHERE NOTED OTHERWISE.
- FOR P&ID STANDARDS AND SYMBOLS, REFER TO 0F00001 & 0F00002.
- DELETED.
- SEQUENCE CONTROL REF. DWG - LATER.
- RCU IS THE REMOTE CONTROL UNIT FOR IE RITS. IT IS LOCATED IN RMS CONTROL ROOM CABINET.
- RT-0043 PROVIDES LOCAL ALARM AND INDICATION.
- VALVE TO BE LOCATED AT LOW POINT.
- RT-0043 INCLUDES HEAT EXCHANGER.
- PIPING TO BE HORIZONTAL & DOWN IN THE DIRECTION OF FLOW. THE PIPING ARRANGEMENT SHALL NOT INCLUDE LOOPS OR POCKETS.
- TAG NUMBERS OF VALVES FURNISHED BY GENERAL ATOMIC IS SHOWN ON REF # 2.

REFERENCES:

- CONDENSER OUTLINE DRAWINGS, LOG NUMBERS 14926-01001-WA THRU 01005-WA, 4001-01001-WA THRU 01005-WA.
- GENERAL ATOMIC DWG NO. 0392-1001 (LTO W/RC), SHY 22, (4301-00279-W, 0301-00271-W).

NO.	ISSUE DATE	REVISION

LR BOUNDARY DRAWING NO.	REV.
LR-STP-SB-5S209F20002#2	0

D275

ESSEED.DGN

15
INCPOR. DCN 9704267.
ISSUED FOR CONSTRUCTION

JSH
SIGNATURES ON FILE
ORIG CKR RE DV SE NO. ISSUE DATE

REVISION

ORIG CKR RE DV SE

REVISION

SCALE	DWG. NO.	REV.
NONE	5S209F20002*2	15