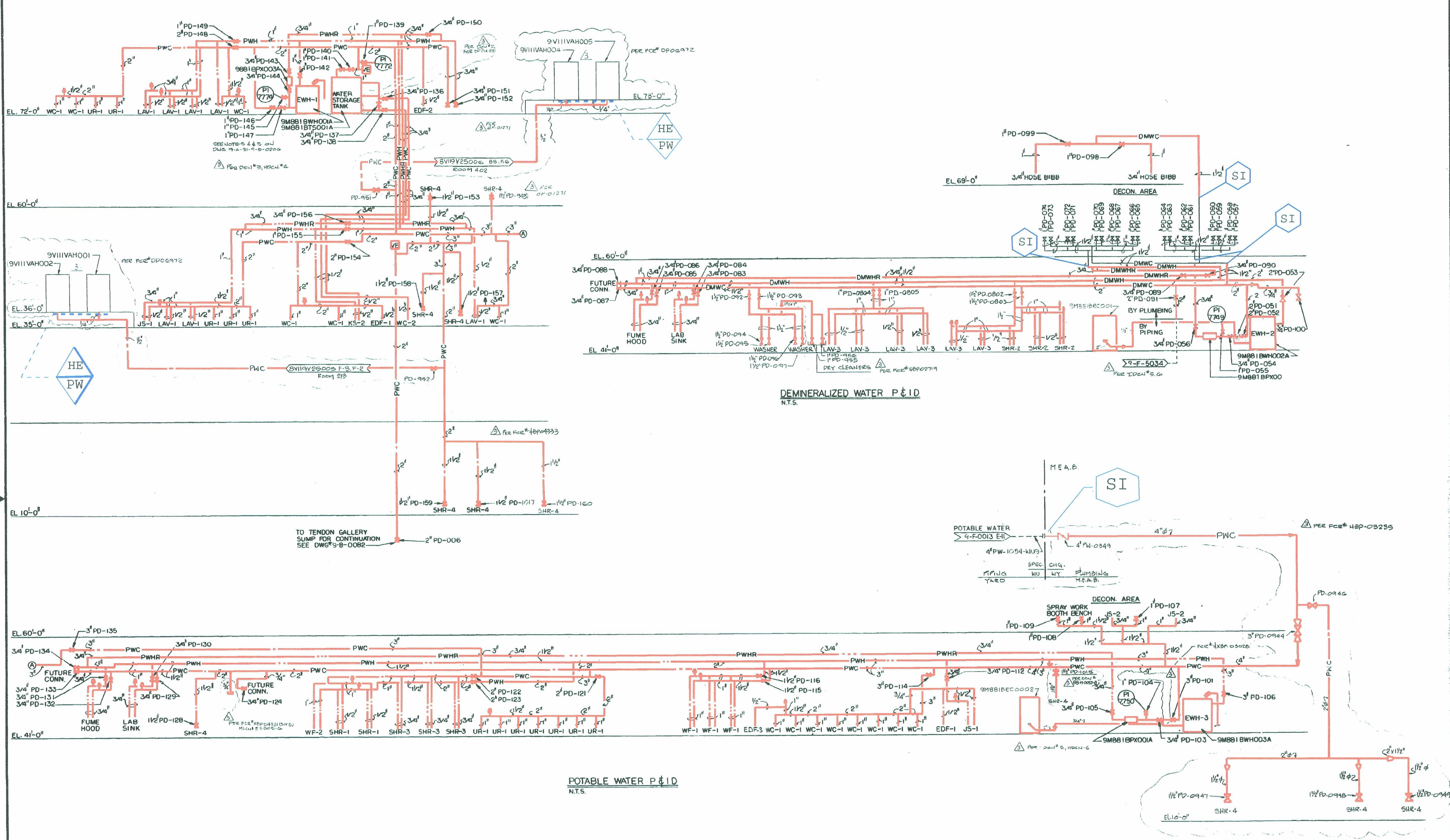


7-10-170

SIZE E

9M-88-9-B-0148-2



LR BOUNDARY DRAWING NO.	REV.
LR-STP-PW-9M889B0148#2	0

NOTES:

- SEE PLUMBING VALVE LIST DWG. 9-B-0205 FOR THE DESCRIPTION OF PLUMBING VALVES.
- SEE DWG. 9-B-0003 FOR SYMBOLS & ABBREVIATIONS.
- SEE POTABLE & DEMINERALIZED WATER DIAGRAM DWG. 9-B-0143 OR 9-B-0162 FOR PDI WATER HAMMER ARRESTOR SIZES & REQUIREMENTS.

ALL UNIT 1 DESIGNATORS SHOWN ON THIS DRAWING SHALL BE INTERPRETED AS BEING UNIT 2 DESIGNATORS WHEN ERECTING UNIT 2 COMPONENTS.

NO.	REVISION	DFT	CKR	GL	EGS	PEM	DATE
3	ISSUED FOR CONSTRUCTION						9-10-85
2	REVISED AS NOTED						4-2-81
1	REVISED AS NOTED						8-16-82

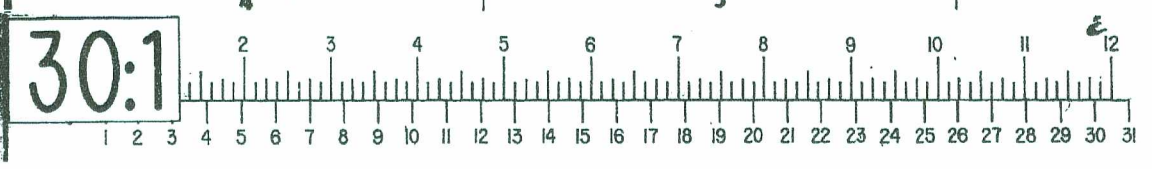
BECHTEL ENERGY CORPORATION
HOUSTON, TEXAS

HOUSTON LIGHTING & POWER CO.
SOUTH TEXAS PROJECT

THIS DWG. SUPERSEDES B&R DWG. 9M-88-1-B-0148-E & 2-B-148-D			
PLUMBING - MEAB POTABLE & DEMINERALIZED WATER P&ID'S			
SCALE	JOB NO.	DRAWING NO.	REV.
NONE	14926	9M-88-9-B-0148	3

I certify that the image contained on this frame was made in the normal and regular course of business on the date stated below and that it is an accurate reproduction of the original submitted by micrographics.

Date: 11/10/85 Operator: [Signature] Supervisor: [Signature]



This drawing and the design it covers are the property of BECHTEL. They are hereby loaned and on the borrower's express agreement that they will not be reproduced, copied, loaned, exhibited, or used except in the limited way and private use permitted by any written consent given by the lender to the borrower.