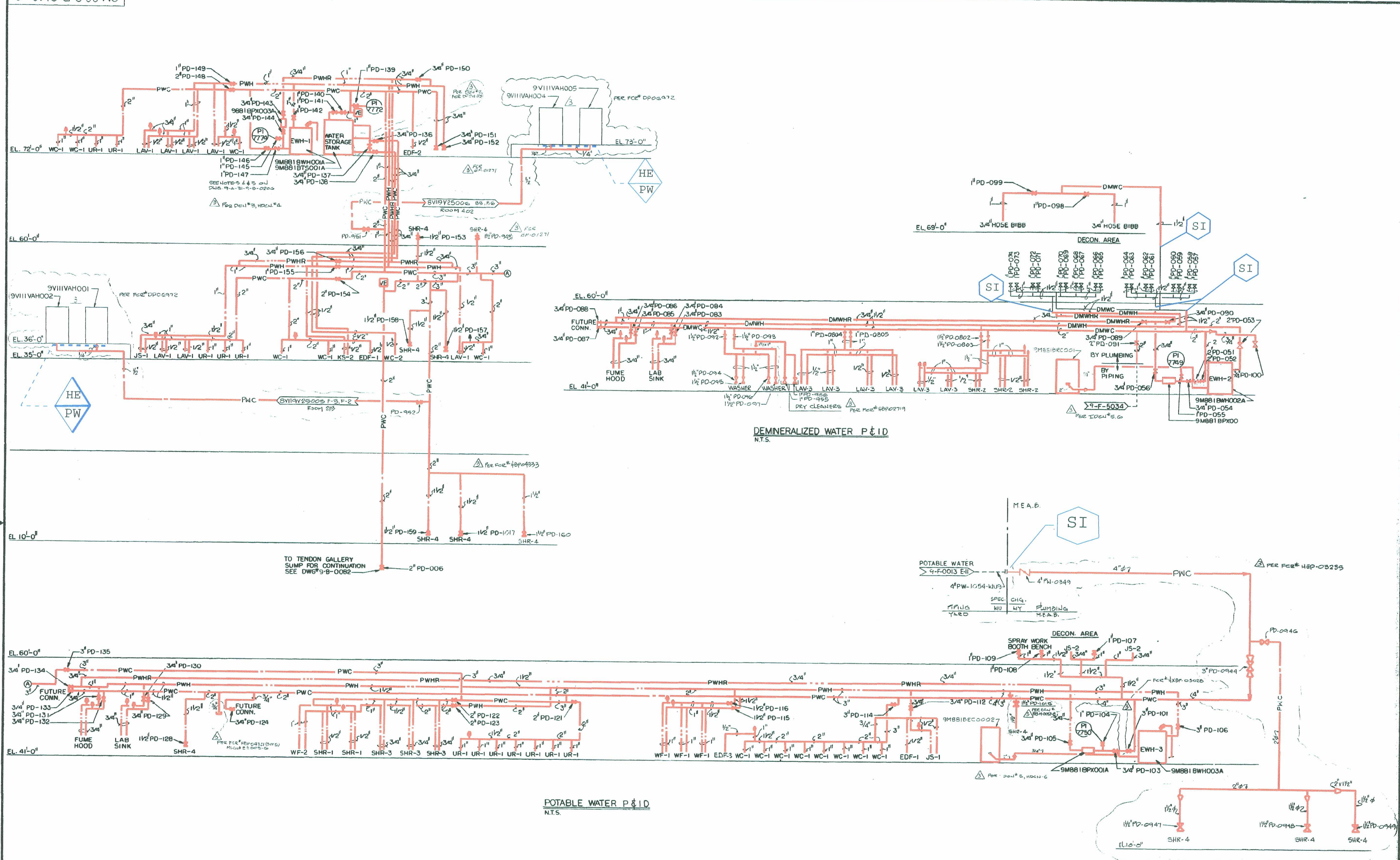


1700170

This drawing and the design it covers are the property of BECHTEL. They are hereby loaned and on the borrower's express agreement that they will not be reproduced, copied, loaned, exhibited or used except in the limited way and private use permitted by any written consent given by the lender to the borrower.



LR BOUNDARY DRAWING NO.	REV.
LR-STP-PW-9M889B0148#1	0

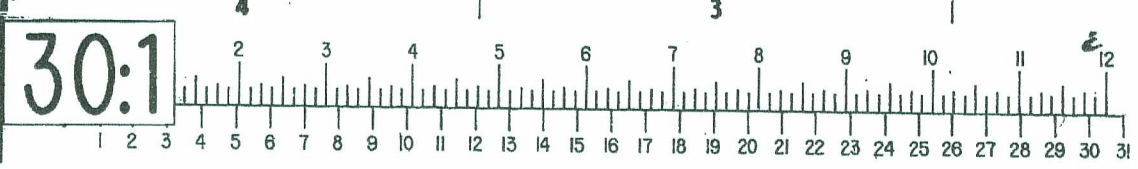
NOTES:
 1. SEE PLUMBING VALVE LIST DWG. 9-B-0205 FOR THE DESCRIPTION OF PLUMBING VALVES.
 2. SEE DWG. 9-B-0003 FOR SYMBOLS & ABBREVIATIONS.
 3. SEE POTABLE & DEMINERALIZED WATER DIAGRAM DWG. 9-B-0143 OR 9-B-0162 FOR PDI WATER HAMMER ARRESTOR SIZES & REQUIREMENTS.

ALL UNIT 1 DESIGNATORS SHOWN ON THIS DRAWING SHALL BE INTERPRETED AS BEING UNIT 2 DESIGNATORS WHEN ERECTING UNIT 2 COMPONENTS

NO.	REVISION	DATE	BY	CHKD	APP'D	DATE
3	ISSUED FOR CONSTRUCTION	8-16-88	WM	GL	EGS	
2	REVISED AS NOTED	4-2-88	WM	GL	EGS	
1	REVISED AS NOTED	9-10-87	WM	GL	EGS	

BECHTEL ENERGY CORPORATION
 HOUSTON, TEXAS
HOUSTON LIGHTING & POWER CO.
 SOUTH TEXAS PROJECT

THIS DWG. SUPERSEDES	B&R DWG. 9M-88-1-B-0148-E & 2-B-148-D		
PLUMBING - MEAB	POTABLE & DEMINERALIZED WATER		
P&ID'S			
SCALE	JOB NO.	DRAWING NO.	REV.
NONE	14926	9M-88-9-B-0148	3



D257