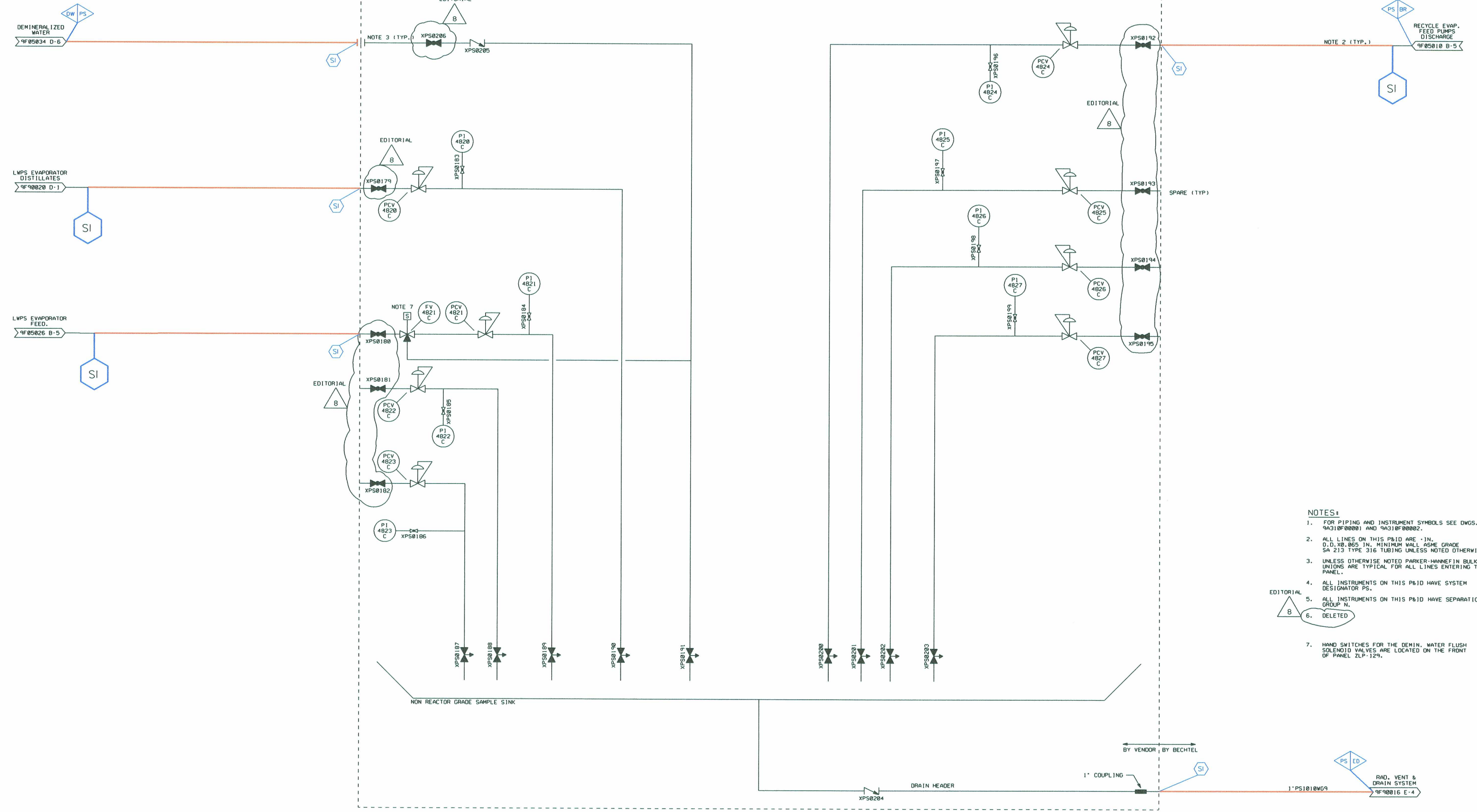


LIQUID WASTE EVAPORATOR PANEL ZLP-129



- NOTES:**
- FOR PIPING AND INSTRUMENT SYMBOLS SEE DWGS. SA210F00001 AND SA210F00002.
 - ALL LINES ON THIS P&ID ARE 1 IN. O.D. X 0.865 IN. MINIMUM WALL ASME GRADE SA 213 TYPE 316 TUBING UNLESS NOTED OTHERWISE.
 - UNLESS OTHERWISE NOTED PARKER-MANNEF IN BULKHEAD UNIONS ARE TYPICAL FOR ALL LINES ENTERING THE PANEL.
 - ALL INSTRUMENTS ON THIS P&ID HAVE SYSTEM DESIGNATOR PS.
 - ALL INSTRUMENTS ON THIS P&ID HAVE SEPARATION GROUP N.
 - DELETED
 - HAND SWITCHES FOR THE DEMIN. WATER FLUSH SOLENOID VALVES ARE LOCATED ON THE FRONT OF PANEL ZLP-129.

EDITORIAL
B

LR BOUNDARY DRAWING NO. LR-STP-PS-9Z329Z00049#2 REV. 0

NO.	ISSUE DATE	REVISION	BY	CKR	RE	DV	NA	SE	PE	NO.	ISSUE DATE	REVISION	BY	CKR	RE	DV	NA	SE	PE	
8																				
7	12-8-88																			
6	6-18-87																			
5	5-15-87																			
4																				



PIPING AND INSTRUMENTATION DIAGRAM
PRIMARY SAMPLING SYSTEM

SCALE NONE DWG. NO. 9Z329Z00049 # 2 REV. 8

PRIORITY 1 DC NO. 0070928 FJA769.081

225