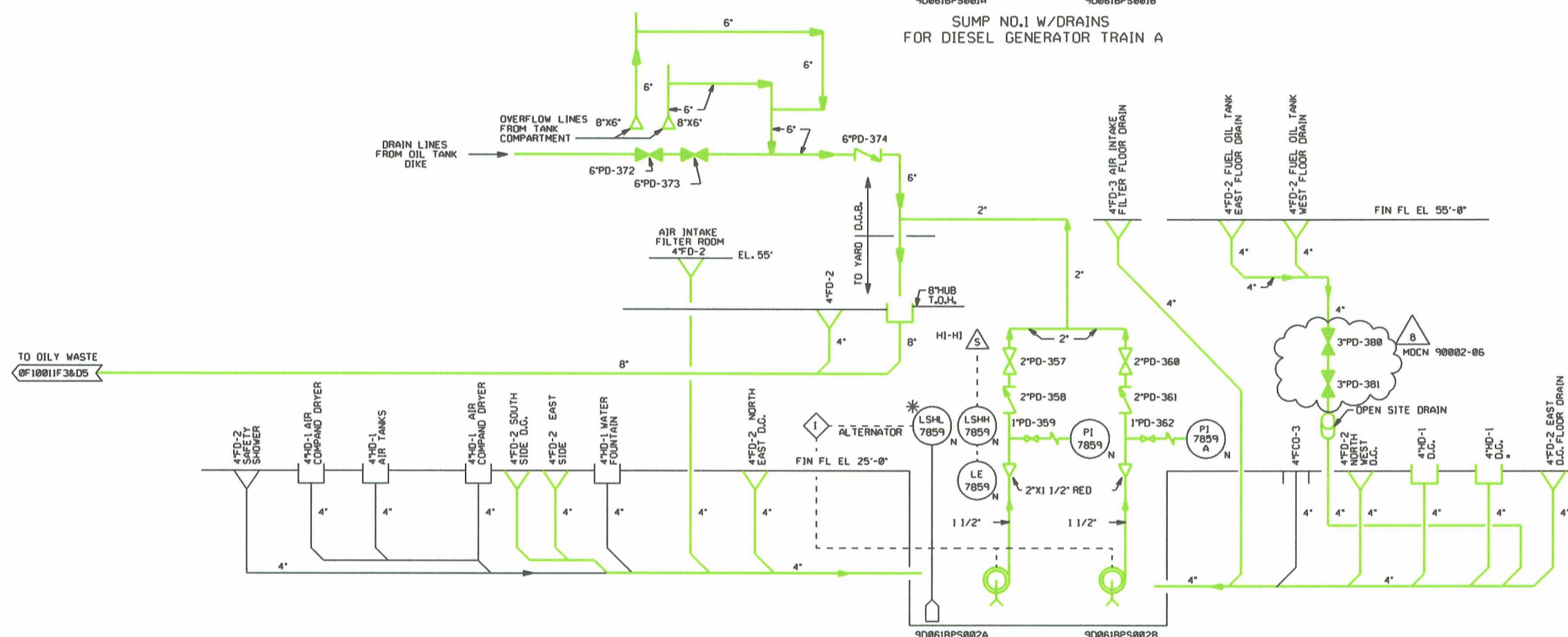
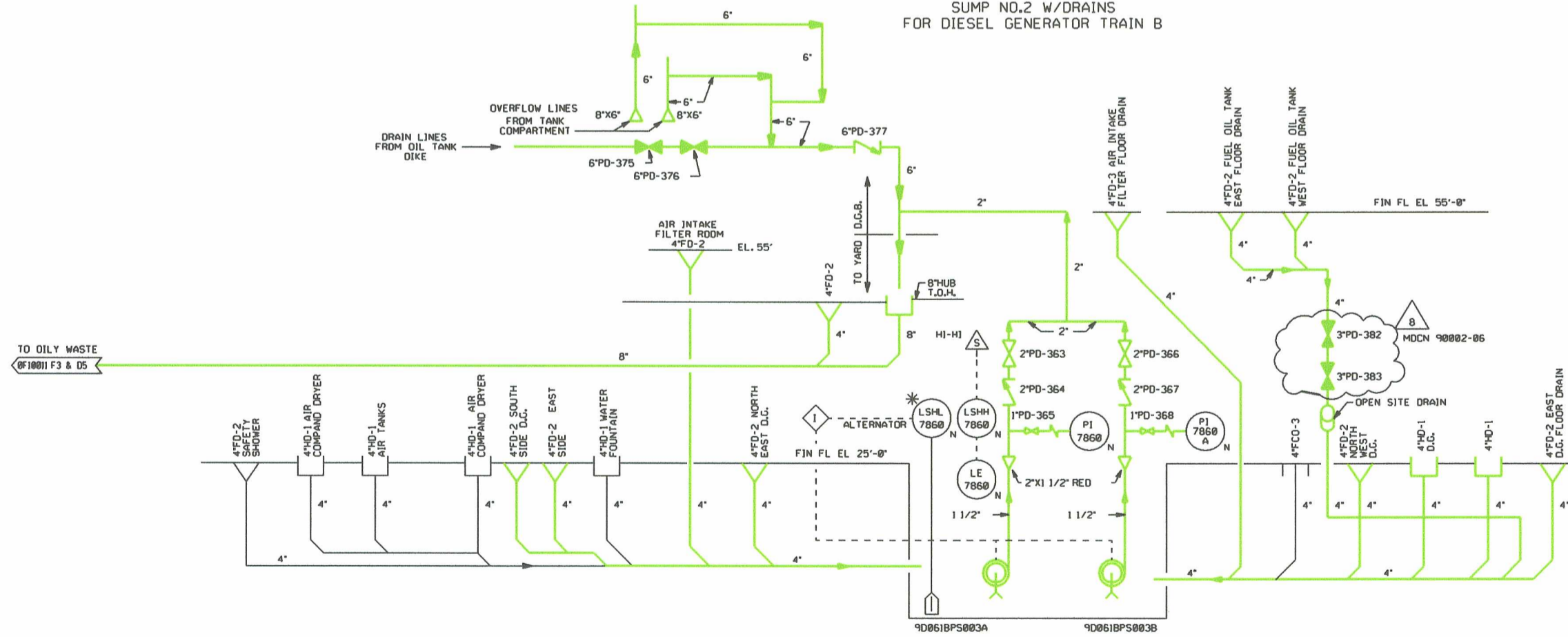


SUMP NO.1 W/DRAINS FOR DIESEL GENERATOR TRAIN A



SUMP NO.2 W/DRAINS FOR DIESEL GENERATOR TRAIN B



SUMP NO.3 W/DRAINS FOR DIESEL GENERATOR TRAIN C

NOTES:
 1. UNLESS OTHERWISE NOTED, UNIT 1 IS SHOWN ON THIS P&ID FOR APPLICATION OF THIS P&ID TO UNIT 2. USE UNIT 2 IDENTIFICATION NUMBERS FOR PIPING, VALVES, INSTRUMENTS, EQUIPMENT, ETC. REFER TO DRAWINGS 9G069F0001 AND 9G069F0002 FOR IDENTIFICATION NUMBER DETAILS.
 2. DELETED.
 3. ALL INSTRUMENTS ON THIS P&ID HAVE DESIGNATORS DR.
 REFERENCES:
 1. FOR PIPING AND INSTRUMENTATION DETAILS SEE LEGEND DRAWINGS 9G069F0001 AND 9G069F0002.

A239

LR NOTE:
 GREEN HIGHLIGHTED COMPONENTS ARE CREDITED FOR FIRE WATER REMOVAL PER 10 CFR 54.4(a)(3), AND ARE NOT SAFETY-RELATED PER 10 CFR 54.4(a)(1).

LR BOUNDARY DRAWING NO.	REV.
LR-STP-OW-9G069F20017#1	0A



PIPING AND INSTRUMENTATION DIAGRAM
 D.G.B SUMPS, PUMPS & DRAINS
 FOR OILY WASTE SYSTEM

NO.	ISSUE DATE	REVISION	SIGNATURES ON FILE					NO.	ISSUE DATE	REVISION	SIGNATURES ON FILE						
			ORIG	CKR	RE	DV	SE				ORIG	CKR	RE	DV	SE		
7B																	
7A	5-19-88	HL&P ASSUMES DESIGN CHANGE CONTROL & INCORP HFCR BH02261															
0-6	12-16-82	ISSUED FOR CONSTRUCTION.															

PRIORITY	CADD FILE NO.	FSUG. NO.	STI. NO.	SCALE	DWG. NO.	SHT.	REV.
1	FJA126.081		2	NONE	9G069F20017#1	1	8

FJA047 7/12/88