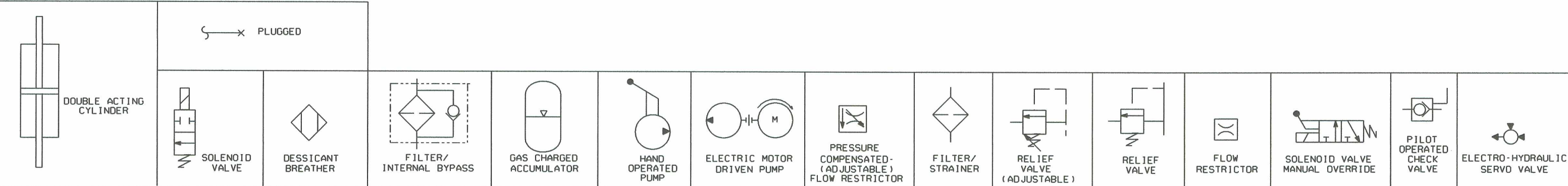


- NOTES:
- FOR COMPONENT IDENTIFICATION, SEE VENDOR DWG. 4344-00047-OE AND BILL OF MATERIALS 4344-00059-OE.
  - ALL INSTRUMENTS ON THIS DIAGRAM HAVE SYSTEM DESIGNATOR "MS" UNLESS OTHERWISE NOTED AND ARE PREFIXED BY UNIT NO. "1".
  - SEE DWGS 9A310F00001 AND 9A310F00002 FOR ALL PIPING AND INSTRUMENT SYMBOLS NOT DEFINED ON THIS DWG.
  - TEST GAUGE PORT WITH PLUG - \*\* TUBE SIZE.
  - TEST GAUGE PORT WITH CAP - \*\* TUBE SIZE/SWAGelok COMPRESSION FITTING END).
  - \*\* NPT PLUG INSTALLED.
  - AS AN ALTERNATE DESIGN, A GLOBE VALVE MAY BE USED.



LR BOUNDARY DRAWING NO.	REV.
LR-STP-MS-5S101Z51002	0

NO.	ISSUE DATE	REVISION	BY	CKR	RE	DV	NA	SE	PE	NO.	ISSUE DATE	REVISION
4	5-21-97	INCORP. DCN 9701924										
3	4-21-97	INCORP. DCN 9606190										
2	10-22-96	INCORP. DCN 96-05676										
1	7-13-95	INCORP. ECN 91-J-017G										
0	1-29-92	ISSUED FOR CONSTRUCTION, SUPERSEDES DWG. 5S101Z50002 *1 AND INC. DCN JD-1211 FROM 5S101Z50002 *1										

BY	CKR	RE	DV	NA	SE	PE	NO.	ISSUE DATE	REVISION
								5	INCORP. DCN'S 9606027, 9606175, AND 9606205.

**HOUSTON LIGHTING & POWER COMPANY**  
SOUTH TEXAS PROJECT ELECTRIC GENERATING STATION

MAIN STEAM POWER OPERATED RELIEF VALVE-HYDRAULIC SYSTEM	
SCALE	DWG. NO.
NONE	5S101Z51002
REV.	
	5