

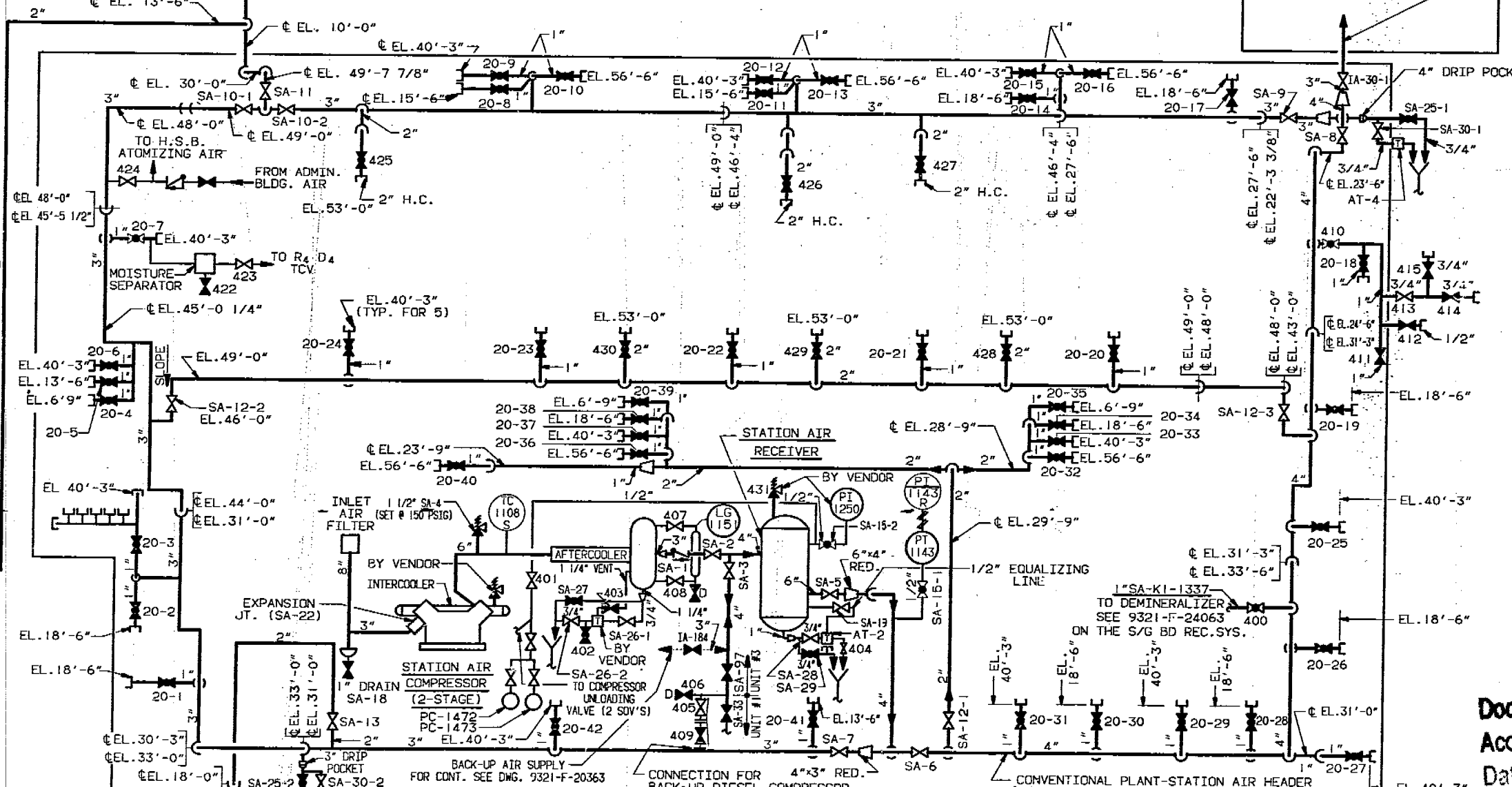
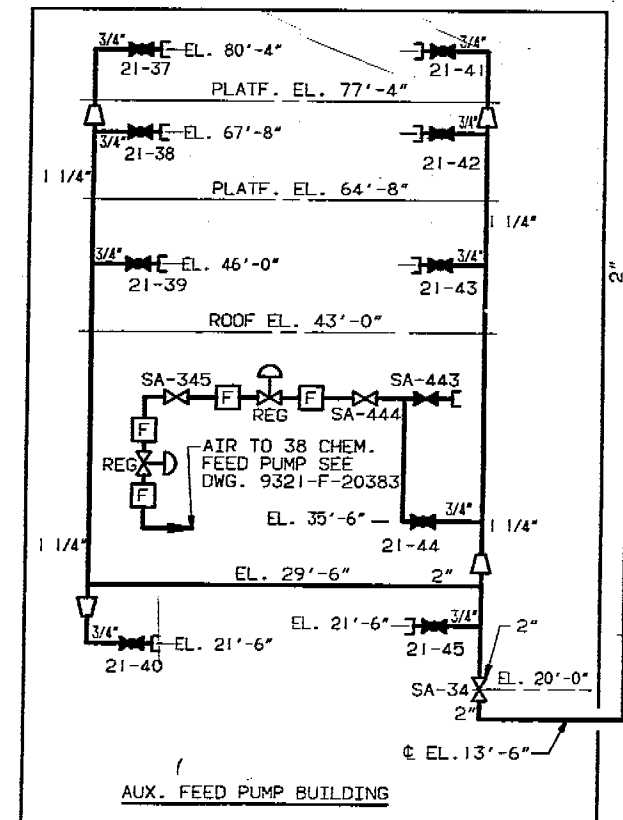
3" EMERGENCY CONN. TO INSTRUMENT AIR COMPRESSOR SYSTEM & EMERGENCY INSTRUMENT AIR SYSTEM SEE 9321-F-20363

**NOTE TO FIELD.**  
ELEVATIONS ARE SHOWN ON THIS DWG. TO AID THE FIELD IN CROSS REFERENCE TO THE PHYSICAL DRAWING NO. 9321-F-21143 FOR INSTALLATION AT THIS TIME FOR CONSTRUCTION PURPOSES.

**REFERENCE DRAWINGS:**

U.E. & C.NO.	CON. ED. NO.	TITLE
9321-F-20163	C-201815	FLOW DIAGRAM SYMBOLS.
9321-F-21133	A-201912	YARD AREA-STA. & INSTR. AIR PIPING - SHT. #1.
9321-F-21143	A-201913	TURB. BLDG. & HTR. BAY-STA. & INSTR. AIR PIPING SHT. #2.
9321-F-21153	A-201914	TURB. BLDG. & HTR. BAY-STA. & INSTR. AIR PIPING SHT. #3.
9321-F-26843	A-202757	PRIMARY AUXILIARY BLDG.-SERVICE AIR & CITY WATER PIPING.
9321-F-26873	A-202199	CONTAINMENT BUILDING-SERVICE AIR & CITY WATER PIPING.
9321-F-26953	A-202207	FUEL STORAGE BUILDING-SERVICE AIR & CITY WATER PIPING.
9321-F-26553	A-201810	HOLD-UP TANK PIT COMPOSITE PIPING SHT. #1.

**NOTE:**  
1. ALL VALVE NO.'S. ARE PRECEDED BY AN "SA" SYSTEM DESIGNATION UNLESS OTHERWISE NOTED.



Docket # 50-286  
Accession # 9311170210  
Date 11/9/93 of Ltr  
Regulatory Docket File

- NOTES:**
1. ALL 1" GLOBE VALVES AT HOSE CONN'S HAVE VALVE NO. SA-20.
  2. ALL 3/4" GLOBE VALVES AT HOSE CONN'S HAVE VALVE NO. SA-21.
  3. (X) = PENETRATION NUMBER (REF. F.S.A.R.)
  4. THIS DWG. SHALL BE USED ONLY FOR DETERMINING THE EXTENT OF THE INSERVICE INSPECTION BOUNDARIES.
  5. BOUNDARIES SHOWN TO INCLUDE BOUNDARY VALVES WHERE APPROPRIATE THE ACTUAL PRESSURE RETAINING I.S.I. BOUNDARIES FOR LEAKAGE AND HYDROSTATIC TESTING EXTEND ONLY TO VALVE INTERNALS THAT COMPRISE THE EFFECTIVE OBTURATOR ASSEMBLY.

**ISI LEGEND**

---	---	---	---	---	---
---	---	---	---	---	---
---	---	---	---	---	---
---	---	---	---	---	---

C.I.V. - CONTAINMENT ISOLATION VALVE

CLASS I PIPING  
DOUBLE ISOLATION VALVE THROUGH CONTAINMENT INCLUDING ISOLATION VALVE SEAL WATER SUPPLY

SI APERTURE CARD INFORMATION ONLY

REV NO.	DATE	DESCRIPTION	BY	CHKD	APP'D
4	11/93	REVISED ISI LEGEND & RELATED NOTE.	MM	MM	JMI
3	7/90	UPDATED TO 9321-F-20383, REV. 21.	MM	MM	JMI

INDIAN POINT NO. 3 NUCLEAR POWER PLANT

FLOW DIAGRAM STATION AIR

DATE

SCALE: NONE

DWG NO: ISI-20353

SHEET: 4

**New York Power Authority**