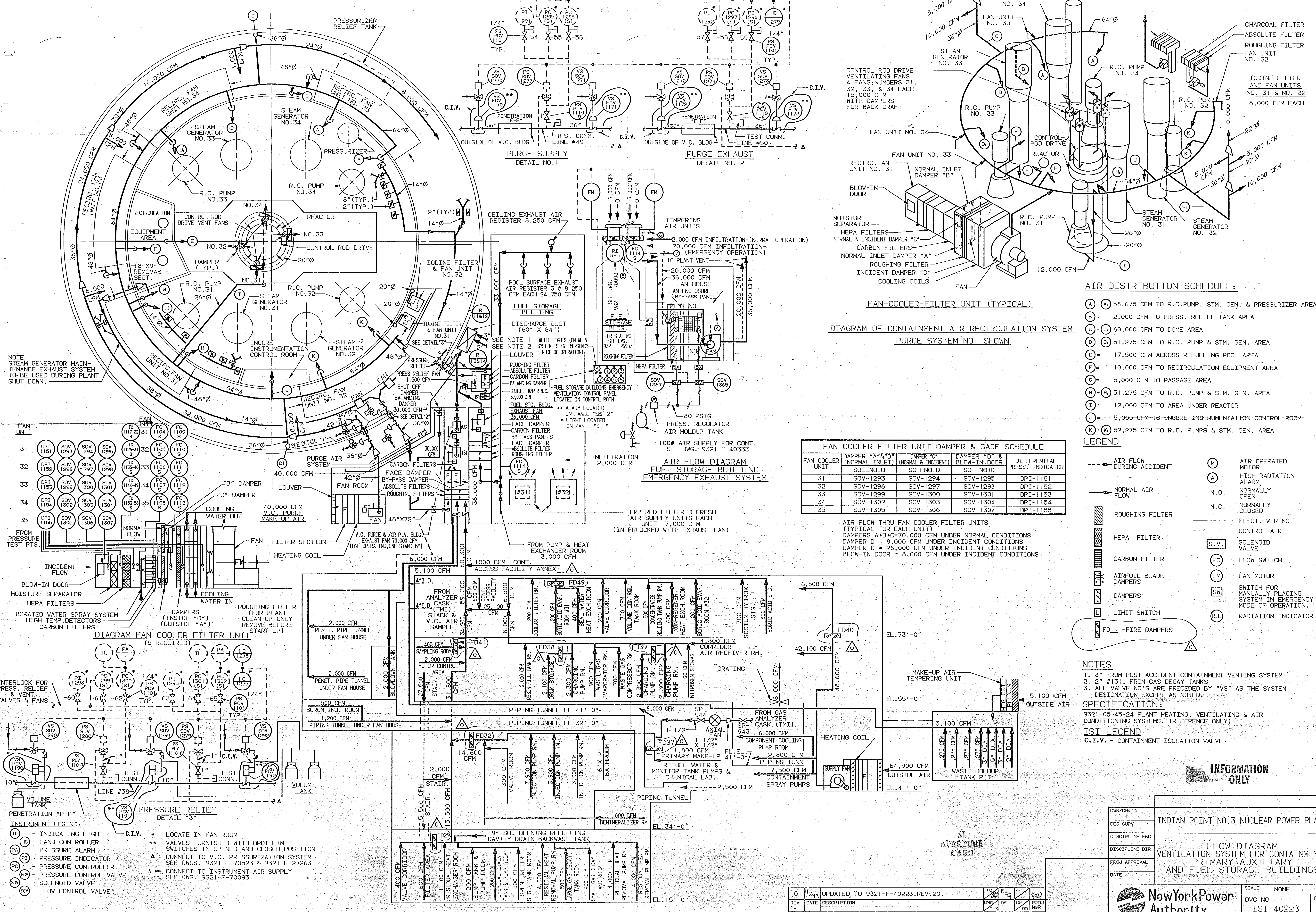
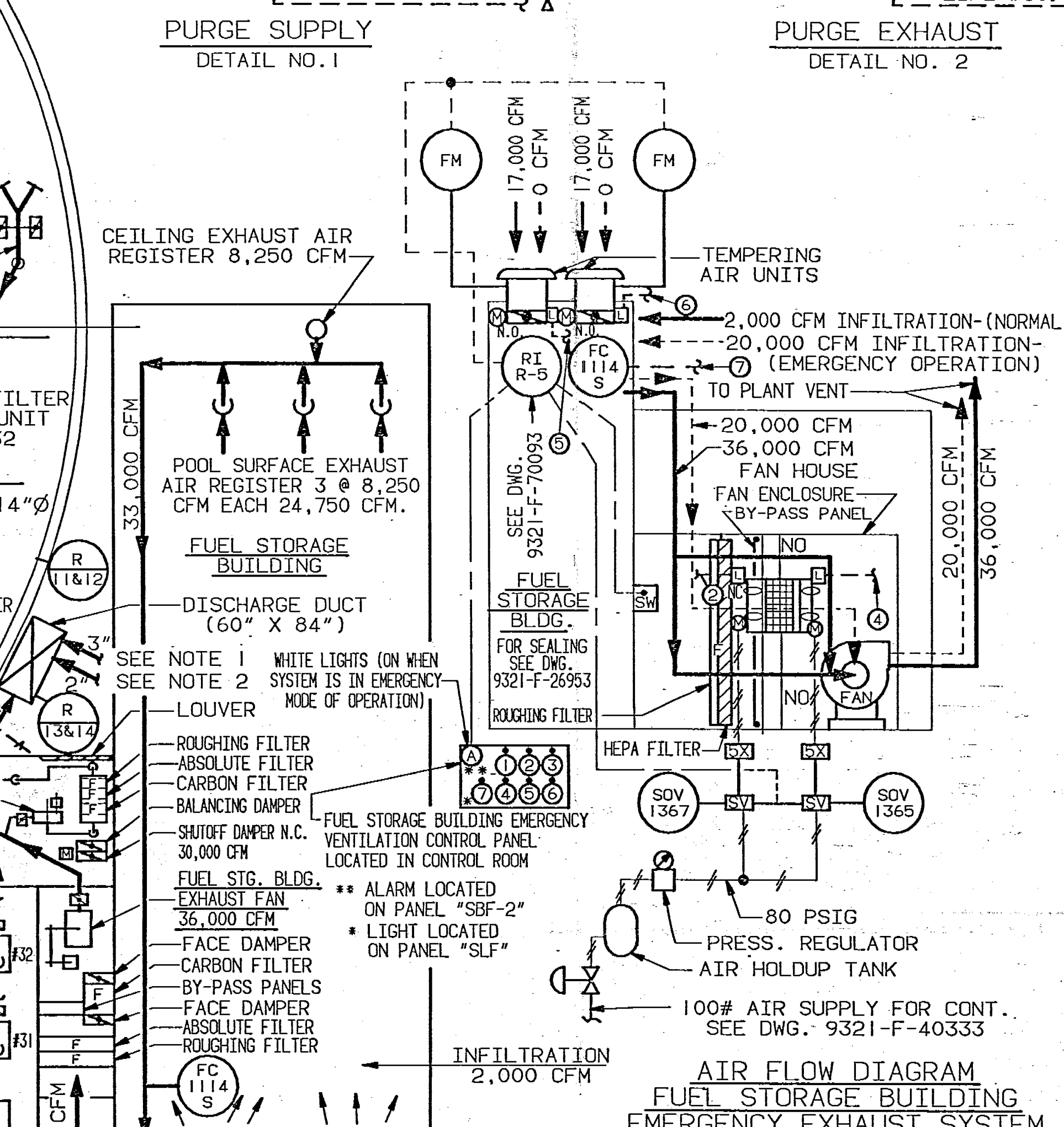
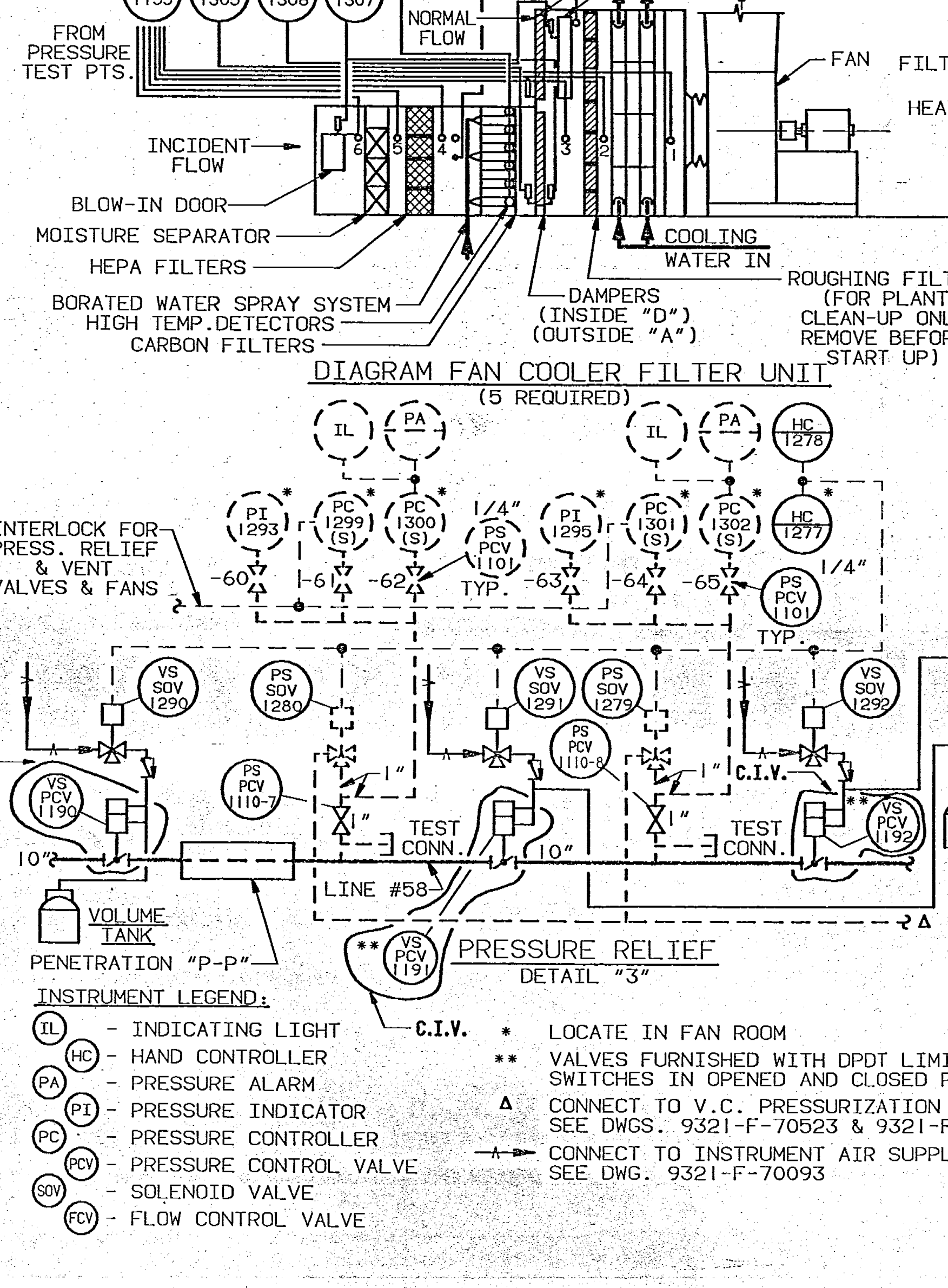
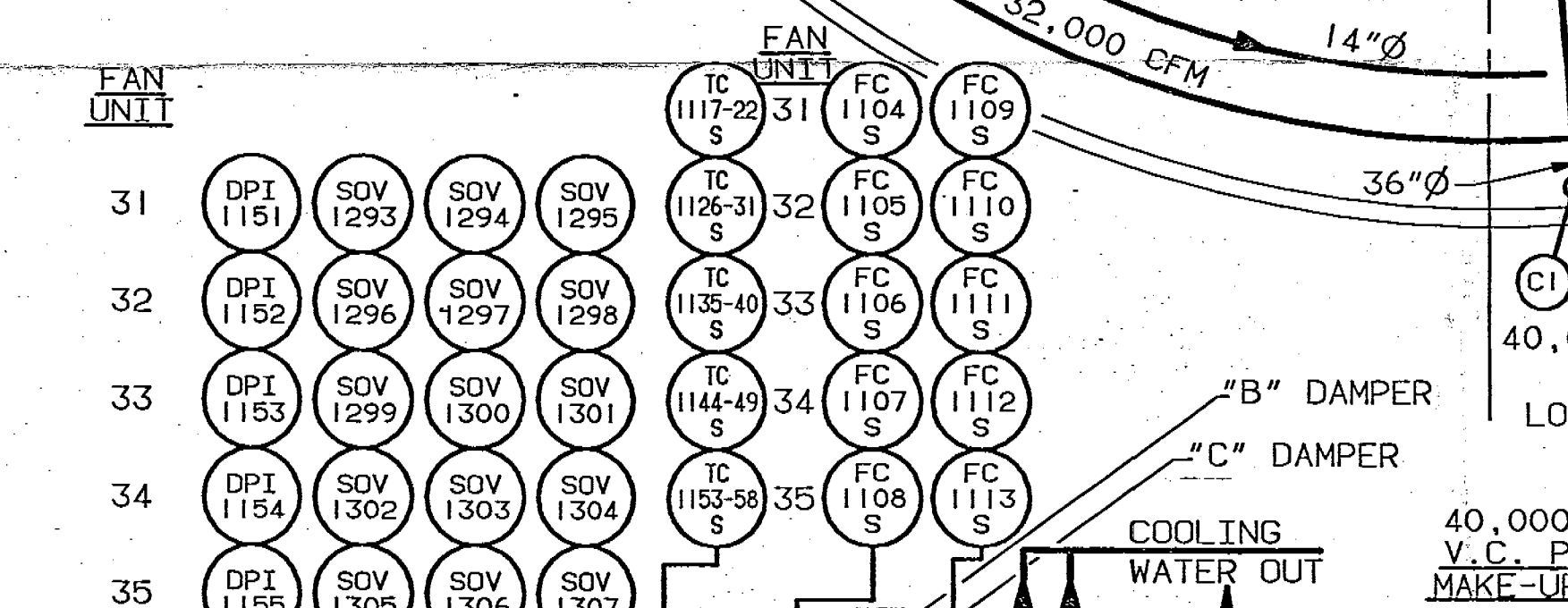


LOCATE IN FAN ROOM
 VALVES FURNISHED WITH DPDT LIMIT SWITCHES IN OPENED AND CLOSED POSITIONS
 CONNECT TO V.C. PRESSURIZATION SYSTEM. SEE DWG. 9321-F-70523.
 INTERLOCK FOR PURGE VENT VALVES & FANS
 CONNECT TO INSTRUMENT AIR SUPPLY. SEE DWG. 9321-F-70093.



NOTE
 STEAM GENERATOR MAINTENANCE EXHAUST SYSTEM TO BE USED DURING PLANT SHUT DOWN.



FAN COOLER UNIT	DAMPER "A" & "B" (NORMAL INLET)	DAMPER "C" (NORMAL & INCIDENT)	DAMPER "D" & BLOW-IN DOOR	DIFFERENTIAL PRESS. INDICATOR
31	SOV-1293	SOV-1294	SOV-1295	DPI-1151
32	SOV-1296	SOV-1297	SOV-1298	DPI-1152
33	SOV-1299	SOV-1300	SOV-1301	DPI-1153
34	SOV-1302	SOV-1303	SOV-1304	DPI-1154
35	SOV-1305	SOV-1306	SOV-1307	DPI-1155

AIR FLOW THRU FAN COOLER FILTER UNITS (TYPICAL FOR EACH UNIT)
 DAMPERS A+B+C=70,000 CFM UNDER NORMAL CONDITIONS
 DAMPER D = 8,000 CFM UNDER INCIDENT CONDITIONS
 DAMPER C = 26,000 CFM UNDER INCIDENT CONDITIONS
 BLOW-IN DOOR = 8,000 CFM UNDER INCIDENT CONDITIONS

- AIR DISTRIBUTION SCHEDULE:**
- (A) + (A) 58,675 CFM TO R.C. PUMP, STM. GEN. & PRESSURIZER AREA
 - (B) = 2,000 CFM TO PRESS. RELIEF TANK AREA
 - (C) + (C) 60,000 CFM TO DOME AREA
 - (D) + (D) 51,275 CFM TO R.C. PUMP & STM. GEN. AREA
 - (E) = 17,500 CFM ACROSS REFUELING POOL AREA
 - (F) = 10,000 CFM TO RECIRCULATION EQUIPMENT AREA
 - (G) = 5,000 CFM TO PASSAGE AREA
 - (H) + (H) 51,275 CFM TO R.C. PUMP & STM. GEN. AREA
 - (I) = 12,000 CFM TO AREA UNDER REACTOR
 - (J) = 5,000 CFM TO INCORE INSTRUMENTATION CONTROL ROOM
 - (K) + (K) 52,275 CFM TO R.C. PUMPS & STM. GEN. AREA
- LEGEND**
- (M) AIR OPERATED MOTOR
 - (A) HIGH RADIATION ALARM
 - N.O. NORMALLY OPEN
 - N.C. NORMALLY CLOSED
 - ELECT. WIRING
 - CONTROL AIR
 - (S.V.) SOLENOID VALVE
 - (FC) FLOW SWITCH
 - (FM) FAN MOTOR
 - (SW) SWITCH FOR MANUALLY PLACING SYSTEM IN EMERGENCY MODE OF OPERATION.
 - (R.I.) RADIATION INDICATOR

NOTES

1. 3" FROM POST ACCIDENT CONTAINMENT VENTING SYSTEM
2. 2" #131, FROM GAS DECAY TANKS
3. ALL VALVE NO'S ARE PRECEDED BY "VS" AS THE SYSTEM DESIGNATION EXCEPT AS NOTED.

SPECIFICATION:
 9321-05-45-24 PLANT HEATING, VENTILATING & AIR CONDITIONING SYSTEMS. (REFERENCE ONLY)

IST LEGEND
 C.I.V. - CONTAINMENT ISOLATION VALVE

INFORMATION ONLY

DWG/CHK'D	INDIAN POINT NO.3 NUCLEAR POWER PLANT		
DES SUPV	DISCIPLINE ENG		
DISCIPLINE DTR	PROJ APPROVAL		
DATE	DATE		

FLOW DIAGRAM FOR CONTAINMENT, PRIMARY-AUXILIARY AND FUEL STORAGE BUILDINGS

SI APERTURE CARD

SCALE: NONE	REV: 0
DWG NO: ISI-40223	SHEET: 0

REV	DATE	DESCRIPTION	BY	CHK	APP	PROJ MGR
0	11/23	UPDATED TO 9321-F-40223, REV. 20.				