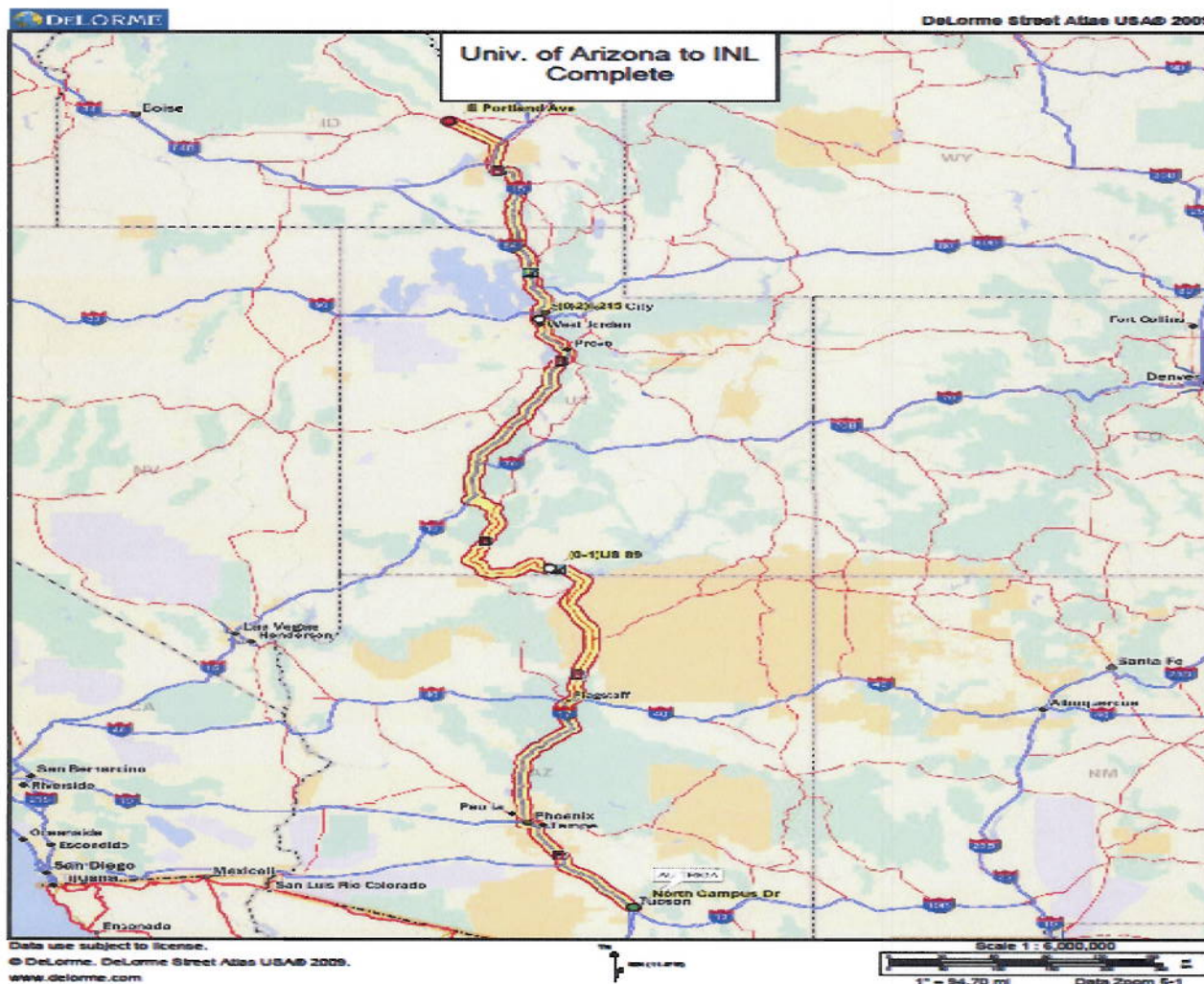




OFFICE OF NUCLEAR SECURITY AND INCIDENT RESPONSE
DIVISION OF SECURITY POLICY
NOVEMBER 2010
IRRADIATED REACTOR FUEL SUMMARY (239)
UNIVERSITY OF ARIZONA (UA), TUSCON, AZ
TO IDAHO NATIONAL LABORATORY (INL), SCOVILLE, ID



WARNING: Violation of Section 147 of the Atomic Energy Act, "Safeguards Information" is subject to Civil and Criminal Penalties.

When separated from Enclosure 2, this document is DECONTROLLED.



OFFICE OF NUCLEAR SECURITY AND INCIDENT RESPONSE
 DIVISION OF SECURITY POLICY
 NOVEMBER 2010
 IRRADIATED REACTOR FUEL SUMMARY (239)
 UNIVERSITY OF ARIZONA (UA), TUSCON, AZ
 TO IDAHO NATIONAL LABORATORY (INL), SCOVILLE, ID

	WAYPOINT/INSTRUCTIONS	ROAD	DIR	TOWARDS	MILES TO NEXT WAYPOINT	CUMULATIVE ROUTE MILES
AZ	Depart campus WEST on Speedway Blvd	Speedway Blvd	W	Tucson	1.4	
AZ	Go NORTH on I-10	I-10	N	Phoenix	108.1	1.4
AZ	Go NORTH on I-17	I-17	N	Flagstaff	145.5	109.5
AZ	Go EAST on I-40	I-40	E	Flagstaff	5.7	255.0
AZ	Go WEST on US-80	US-80	W	Flagstaff	0.5	260.7
AZ	Go NORTH on US-89	US-89	N	Utah line	138.1	261.2
AZ	STATE MILEAGE SUBTOTAL				399.3	
UT	Continue NORTH on US-89	US-89	N	Panguitch	141.5	399.3
UT	Go WEST SR-20	SR-20	W	Beaver	20.5	540.8
UT	Go NORTH on I-15	I-15	N	Salt Lake City	204.2	561.3
UT	Go NORTH on I-215	I-215	N	Salt Lake City	17.3	765.5
UT	Go NORTH on I-15	I-15	N	Idaho line	87.3	782.8
UT	STATE MILEAGE SUBTOTAL				470.8	
ID	Continue NORTH on I-15	I-15	N	Blackfoot	92.5	870.1
ID	Go NORTHWEST on US-26	US-26	NW	Facility	34.1	962.6
ID	STATE MILEAGE SUBTOTAL				126.6	
ROUTE MILEAGE TOTAL						996.7

WARNING: Violation of Section 147 of the Atomic Energy Act, "Safeguards Information" is subject to Civil and Criminal Penalties.

When separated from Enclosure 2, this document is DECONTROLLED.