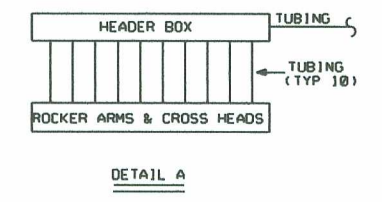


- NOTES:
- FOR PIPING VALVES, INSTRUMENTS, EQUIPMENT, ETC., REFER TO DRAWING 94310F00001 AND 94310F00002 FOR IDENTIFICATION NUMBER DETAIL.
 - ALL INSTRUMENTS SHOWN ON THIS P&ID HAVE SYSTEM DESIGNATOR "LU" UNLESS OTHERWISE NOTED.
 - ALL INSTRUMENTS SHOWN ON THIS P&ID HAVE SEPARATION GROUP "N" UNLESS OTHERWISE NOTED.
 - DUAL RTD.
 - DO NOT USE GALVANIZED PIPE FOR LUBE OIL SYSTEM.
 - EQUIPMENT CONSTRUCTED TO ASME SEC. III, CLASS 3 INCLUDES: CIRCULATING PUMP, LUBE OIL COOLER, FILTERS, STRAINERS, CHECK VALVES, THERMOSTATIC VALVE.
 - DESCRIPTION FOR THE NON ASME SECTION III CLASS 3 COMPONENTS SUPPLIED WITH THE ESP DO SETS.
 - EQUIPMENT IS LIMITED TO SKID MOUNTED EQUIPMENT.
 - POWER WIRING DIRECTLY TO COMPONENTS IS BY BECHTEL. CONTROL & METERING WIRING TO TERMINATE AT SKID MOUNTED JUNCTION BOXES BY CES. REF. CONDUIT AND WIRING SCHEMATIC KSV-87 SERIES.
 - DRESSER COUPLING.
 - "MV" INDICATES MANIFOLD VALVES.
 - DUPLEX FILTER WITH INTEGRAL THREE WAY ISOLATION VALVE.
 - SEE P.D. 4841
 - CHECK VALVE INTERNALS REMOVED.

STANDBY DIESEL
NO. 11

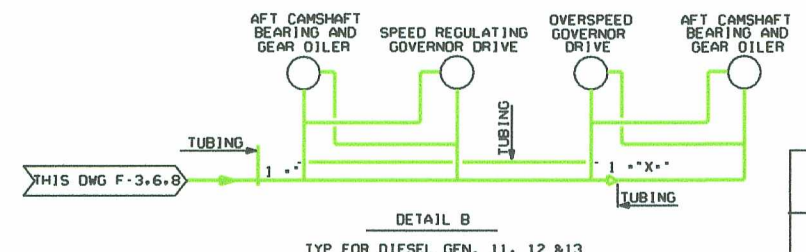


STANDBY DIESEL
NO. 12

LR NOTE 1:
THERE ARE SOME VALVES DOWNSTREAM OF THE NON-SAFETY INTERFACE FLAG (SOLID BLACK TRIANGLE) THAT ARE HIGHLIGHTED GREEN. THESE VALVES ARE SAFETY-RELATED PER THE STP MASTER EQUIPMENT LIST, AND THUS ARE ASSIGNED AN (A11) INTENDED FUNCTION.

- REFERENCES:
- FOR PIPING & INSTRUMENT SYMBOLS SEE DWG. 0F00001 & 0F00002.
 - BECHTEL LOG 4841-01247-CE & 4841-01185-CE.

STANDBY DIESEL
NO. 13



LR BOUNDARY DRAWING NO.	REV
LR-STP-DG-50159F22542*1	0B

19	INCORP. DCN'S 9603547 & 9603548.	VJM
18	ISSUED FOR CONSTRUCTION.	
NO.	ISSUE DATE	REVISION

ORIG	CKR	RE	OV	SE
NO.	ISSUE DATE	REVISION		

ORIG	CKR	RE	OV	SE
NO.	ISSUE DATE	REVISION		

SOUTH TEXAS PROJECT
NUCLEAR OPERATING COMPANY

PRIORITY: 1
CADD FILE NO.: FJA354.191
FSUG. NO.: D070928
STI. NO.: 2

PIPING & INSTRUMENTATION DIAGRAM STANDBY DIESEL LUBE OIL	
SCALE: NONE	DWG. NO.: 50159F22542*1
SHT.: 19	REV.: 0B