



NRC Licensee Performance Review Meeting AREVA Comments



AREVA NP, Inc.
Richland, Wash.

Nov. 17, 2010



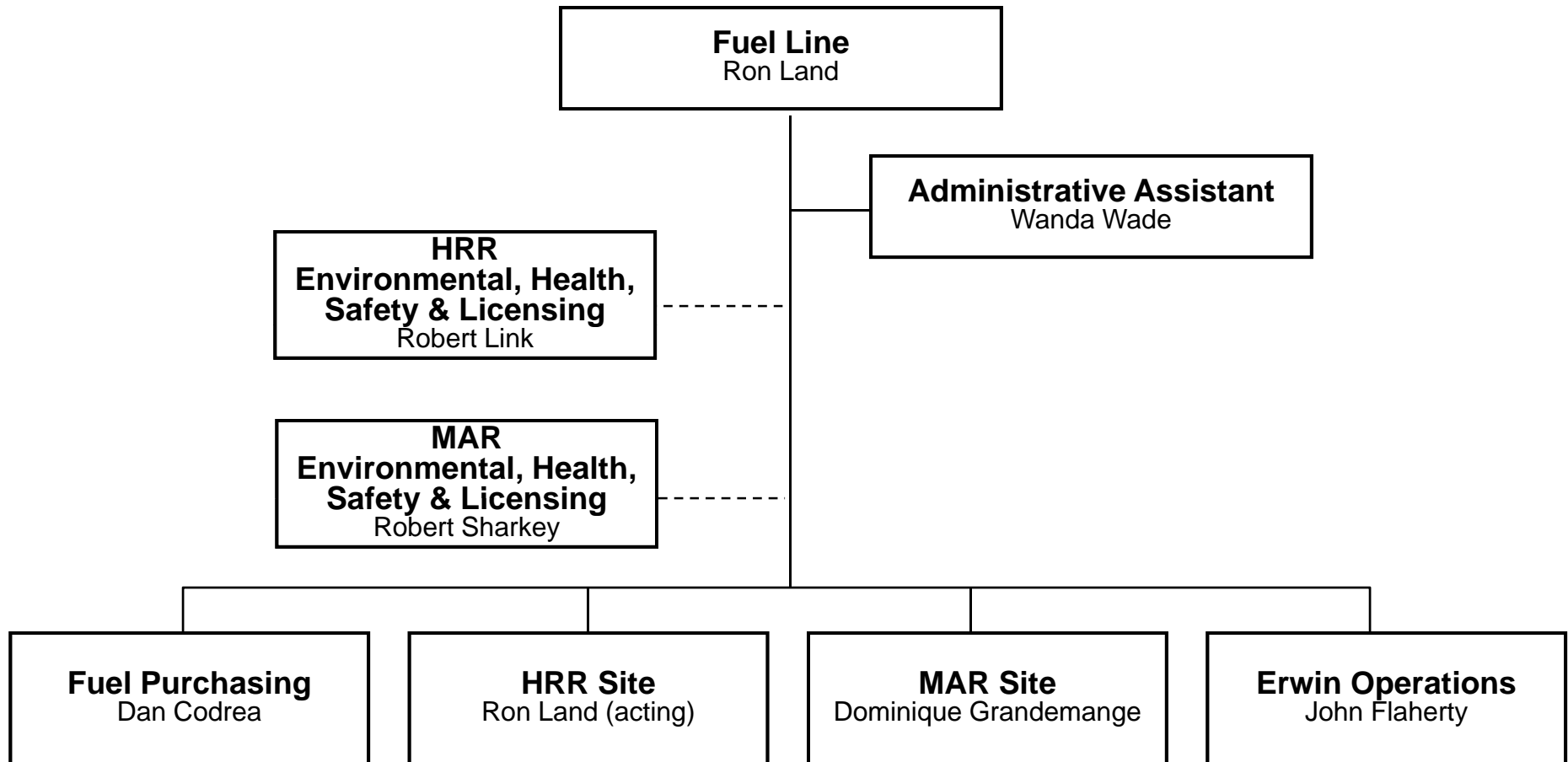
Agenda

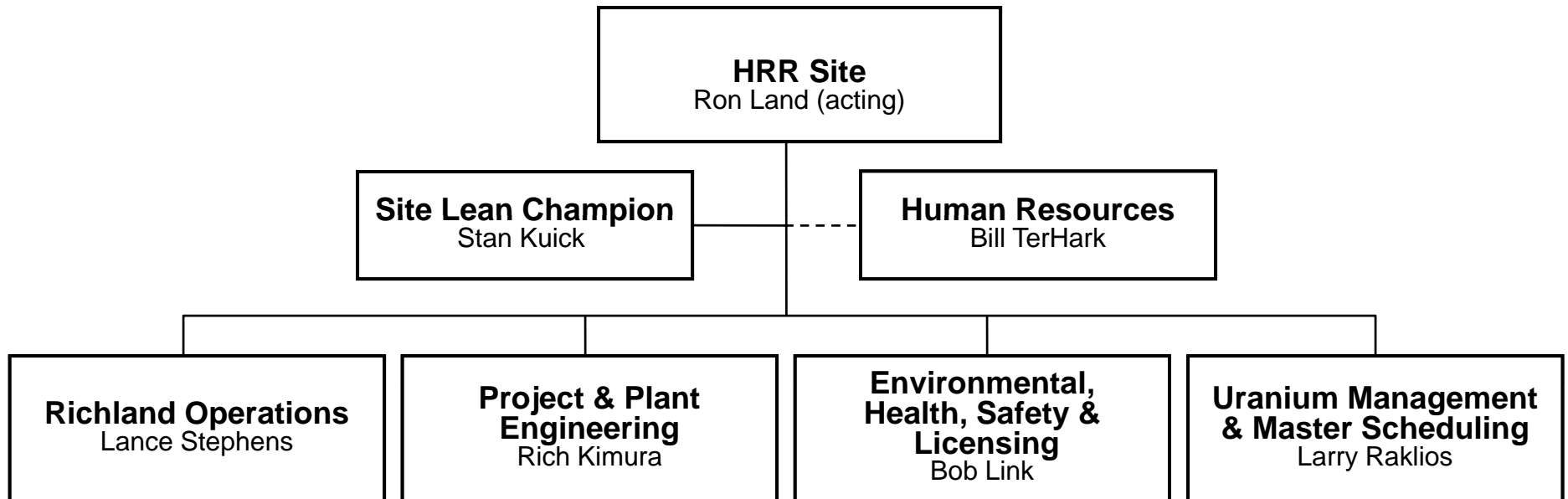


- ▶ **Introduction & Organization**
- ▶ **Richland Site Highlights**
- ▶ **Site Safety – Focused Improvement**
- ▶ **Closing Remarks**



Front End - Fuel
Fuel Line





Richland Site Highlights



▶ Continuous Improvement Trend

- ◆ Decreasing Human Error Rate – Significant emphasis on Human Factors training – Initiated Human Factors Lab
- ◆ Management observation program
 - 2200 observations in 2010 reinforcing expectations; coaching opportunities
- ◆ Housekeeping Expectations
- ◆ Corrective Action Program Utilization
- ◆ Continue to Reduce Minor Infractions

▶ Integrated Safety Analysis Program Enhancements

- ◆ Increased Application of Engineered IROFS
- ◆ Reducing Administrative Controls

▶ Chemical & Industrial Safety Focus

- ◆ Awareness Training
- ◆ Procedure Protocol Improvements
- ◆ Monitoring Practices and Reinforcement

▶ Safety Culture

- ◆ Reinforcement of Safety Conscious Work Environment
- ◆ Rules of Conduct and Behavioral Expectations
- ◆ Continued Reinforcement of Human Performance Improvement Tools



Site Safety: Focused Improvement



- ▶ **Industrial Safety**
 - ◆ Reduced incidents via reinforcement of Safe Start Principles – lowest incident rates in over two decades
 - ◆ Behavioral Safety – Human Performance Tools, Human Performance Laboratory
- ▶ **Chemical and Radiological Safety**
 - ◆ Removal of site's most significant off-site chemical hazard – Anhydrous Ammonium
 - ◆ ALARA Emphasis to Lower Dose
- ▶ **Fire Safety**
 - ◆ Monthly Inspection Program
 - ◆ Rebaselining Fire Protection design basis
- ▶ **Waste Minimization – All time low, on site volume**
- ▶ **New Technology Application**
 - ◆ Reduced Emissions, Liquid & Air, Over-existing Technology
- ▶ **ISO 9001 QA, ISO 14001 Qualified for Environmental and OHSAS 18001 for Safety**
 - ◆ Drives Continuous Improvement



Closing Remarks



- ▶ **AREVA and Richland site management team remain committed to:**
 - ◆ Ensuring the continued health and safety of our employees, the public and the environment.
 - ◆ Complying with our NRC-approved operating license and all applicable regulations.
 - ◆ Continuously improving the operations and systems of control at our facility.

